

CARE BEARS plush



a free sewing pattern by



CARE BEARS PLUSH

The Care Bears have been around for decades, first appearing in 1982 in a series of greeting cards and have since expanded to TV shows, movies, and toys. There are now dozens of characters that expand beyond bears, but they all share the same distinctive bellies with caring messages. This version has a classic teddy bear look with floppy rag doll style arms and legs. They also have chubby cheeks, a cute muzzle, and of course the iconic belly icon. The details combine some aspects from older styles of the bears with the most recent styles.

This pattern will take you through the main 5 bears from the current series: Cheer Bear, Share Bear, Funshine Bear, Grumpy Bear, and Good Luck Bear. But it can easily be adapted to other characters by swapping out their belly icons.

MAKES:

ONE PLUSH:

About 8½" tall when sitting or 11" tall from top of head to bottom of feet. About 6" wide from each side of head, and 5" long from tip of nose to back of head.

DIFFICULTY:



The hardest part of this plush is likely trying to fit all the arms and legs inside the plush before the final body seam. You can leave the arms and legs unstuffed if this gives you trouble.

SKILLS USED:

- Fusible web applique
- Curved sewing
- Ladder stitch
- Sewing small pieces
- Basting
- Darts



sew desu ne?

| WWW.CHOLYKNIGHT.COM |

MATERIALS & TOOLS:

- 1/3 yd. of fabric for main body
 - 1/4 yd. (or 9" x 7") of white fabric for accent belly and muzzle
 - sewing thread to match main fabric and applique fabrics
 - poly-fil stuffing
 - basic sewing tools (sewing machine, scissors, iron, needles, pins, fabric marker, seam ripper)
- **APPLIQUE FOR ALL BEARS:**
 - 4" x 4" of darker accent fabric for paws, cheek lines, mouth, and eyebrows
 - 4" x 4" of white applique fabric for inner ears, eye whites, and eye shines
 - 3" x 3" of black applique fabric for eyes and eyelids
 - 2" x 2" of red applique fabric for bottom heart
 - 6" x 6" of light or heavy duty fusible web

BELLY APPLIQUE:



CHEER BEAR RAINBOW:

- 5" x 2" of pink, orange, yellow, green, and blue applique fabric for rainbow stripes
- 5" x 5" of light or heavy duty fusible web



GOOD LUCK BEAR SHAMROCK:

- 3" x 3" of green applique fabric for shamrock
- 3" x 3" of light or heavy duty fusible web



SHARE BEAR LOLLIPOPS:

- 3" x 3" of blue fabric for lollipops
- 3" x 3" of pink fabric for lollipops
- 5" x 5" of light or heavy duty fusible web

sew desu ne?

| WWW.CHOLYKNIGHT.COM |



☐ FUNSHINE BEAR SUN:

- 3" x 3" of yellow applique fabric for sun
- 2" x 2" of brown applique fabric for smile
- 4" x 4" of light or heavy duty fusible web

☐ GRUMPY BEAR CLOUD:

- 3" x 3" of dark blue applique fabric for cloud and raindrops
- 2" x 2" of red applique fabric for hearts
- 4" x 4" of light or heavy duty fusible web

FUSIBLE WEB:

- Fusible web adhesive is a sheet of adhesive with a paper backing.
Not to be confused with fusible interfacing, which is adhesive attached to a fabric/fiber backing.
- Some common brands are **Pellon & HeatnBond**
- In countries outside the US, it may also be known as **bondaweb**
- It comes in **light** and **heavy duty** varieties. Lightweight strength is meant for applique you intend to sew later. Heavy duty versions are for a no-sew bond. If you try to sew them later your machine might have trouble penetrating the glue.



APPLIQUE FABRICS:

- Good applique fabrics include **flannel, cotton, felt, minky, and fleece**.
- Flannel and cotton are best for detailed applique with a lot of layers because they're thinner. Meanwhile felt, minky, and fleece are better for simpler applique like body markings.
- **Flannel** is used in the example instructions (page 8).



sew desu ne?

| WWW.CHOLYKNIGHT.COM |

fabric comparison:



SUGGESTED BODY FABRICS:

MINKY OR FLEECE

Medium weight, plush fabrics with about 20%-30% stretch along the crosswise grain work best for this project. The varieties shown to the left are some good options and names to look for. Try to avoid heavyweight versions of fleece that are intended for outdoor apparel or they may cause trouble for the detailed areas.

You can also use non-stretch fabrics (such as felt), but be aware that the curves will be more difficult to sew and the result will look different. The plush will become more elongated and the edges will look sharper.

10" of minky stretches to 13" = 30% stretch

MINKY VS. FELT



sew desu ne?

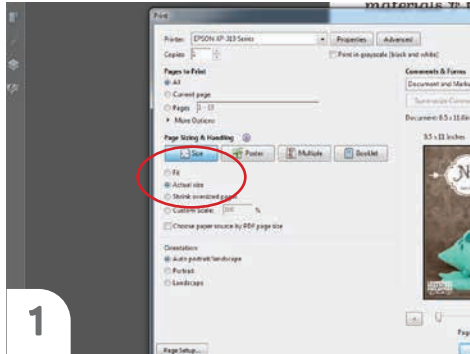
| WWW.CHOLYKNIGHT.COM |

PRINTING THE PATTERN:

Set your computer to print **PAGES 27-33.**

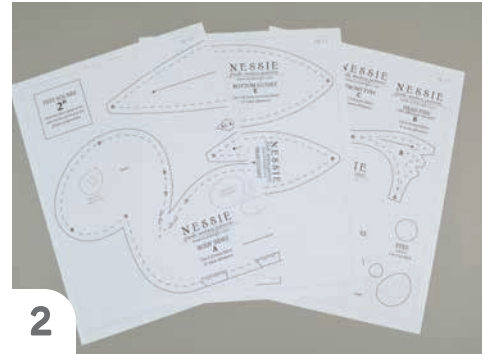
If you're unfamiliar with printing and assembling a .pdf pattern, read the steps to follow.

For the best results, use a .pdf reader like **ADOBE READER.** That's what is shown here and will give you the most control over the settings.



1

At the print dialog box, check the box that says print at "Actual Size" or 100%. Any other selection (such as "Fit to page") will distort the pattern so it's slightly larger or smaller and we don't want that.



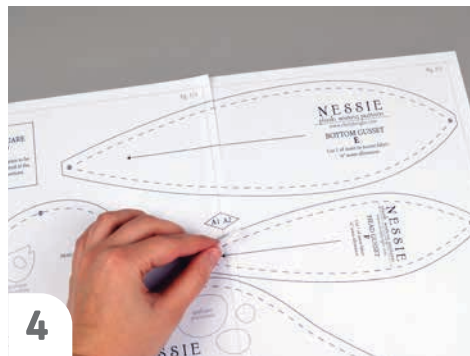
2

Print the pages needed for the file. You might have one or more. Either way, be sure you have the full collection by noting the page numbers in the corner.



3

It's likely your printer will have a margin that ensures your image doesn't print to the very edge. Assembly will be easier if you trim off this blank margin edge. This will give you pages that overlap slightly during assembly. If you trim across the gray outline boxes, this will give you pages that don't overlap but rather butt against each other.



4

To line up the pattern pages, match up the corresponding diamond shapes. Each diamond will have a letter, so it's simply a matter of matching A1 to A2, B3 to B4 and so on. The faint gray lines indicate the border of every page, you should be able to line those up as well. When the diamond goes together, tape it in place.

If you have many pages, it's easier to tape up the pages into rows first. Then tape the rows together into a full block.



5

You can trace the patterns onto a different paper, or you can also just cut them straight from the printer paper -- be sure that each piece is fully taped together along the joins so they don't fall apart when you cut them.

sew desu ne?

| WWW.CHOLYKNIGHT.COM |

CUTTING THE FABRIC:



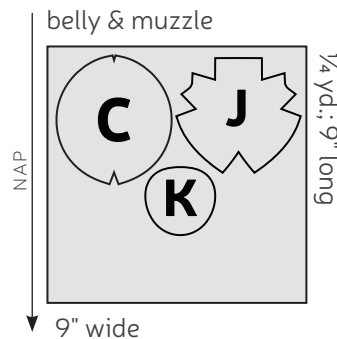
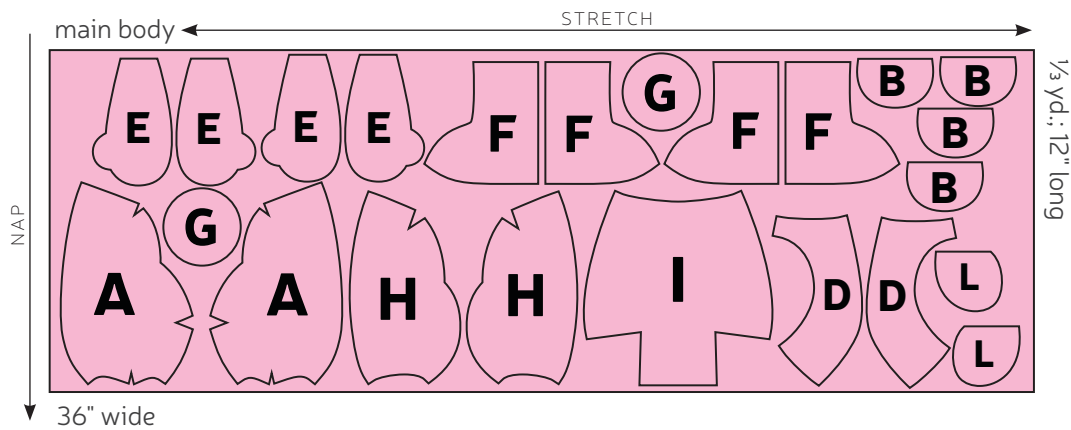
1 Place pattern on the fabric, and make sure the stretch line matches the stretch of the fabric. The nap line should go in the direction of the fur.

2 Pin the pattern in place, use pattern weights, or trace the outline of the pattern with a washable marker.

3 Using the paper as a template, cut out the fabric. Cut the required amount according to the pattern.

4 For all fur fabrics, shake the excess fuzz away.

CUTTING LAYOUT:



sew desu ne?

| WWW.CHOLYKNIGHT.COM |

BEFORE YOU BEGIN:

- Briefly read the project instructions so you know what to expect.
- If desired, mark the cut fabric pieces with the markings and symbols from the pattern. Or wait until the applicable step before transferring.
- Note that a ¼" seam allowance is used for the project unless otherwise mentioned. The seam allowance is included in the pattern templates.

1. FUSE THE EYE APPLIQUE



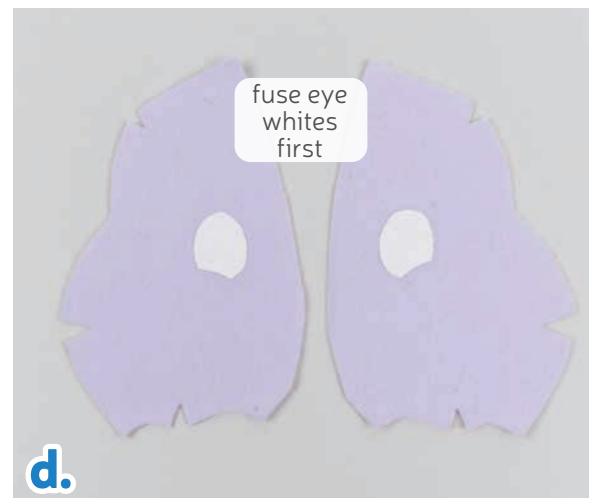
a. Grab your fusible web and applique templates. Trace the pieces for the **eyes**. You have your choice of **HAPPY EYES** or grumpy eyes (for **GRUMPY BEAR**). Here we're building the happy eyes. You should have:

- **eye whites** (2, white)
- **eye shines** (2, white)
- **pupils** (2, black)
- **eyelids** (2, black)
- **cheek lines** (2, dark accent color)
- **eyebrows** (2, dark accent color)

b. Fuse the bumpy (adhesive) side of the fusible web onto the applique fabrics.

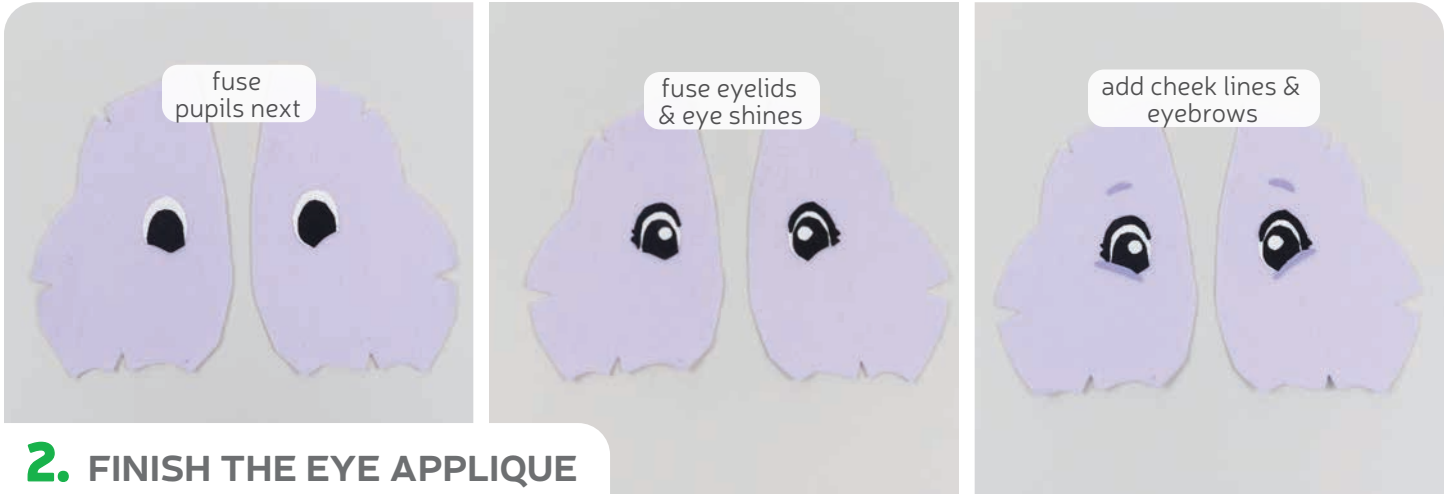
c. Cut out your applique pieces and grab one of your **HEAD FRONT** pieces (A). Grab the **eye white** applique piece. Set your paper pattern on top of the head front piece. Align the applique piece on top where the placement markings are. Next, carefully pull the paper pattern away while holding the applique piece in place.

d. Fuse the applique pieces with your iron. Use a press cloth, such as a scrap piece of cotton. This will help protect any polyester or fuzzy fabrics from melting or scorching.



sew desu ne?

| WWW.CHOLYKNIGHT.COM |

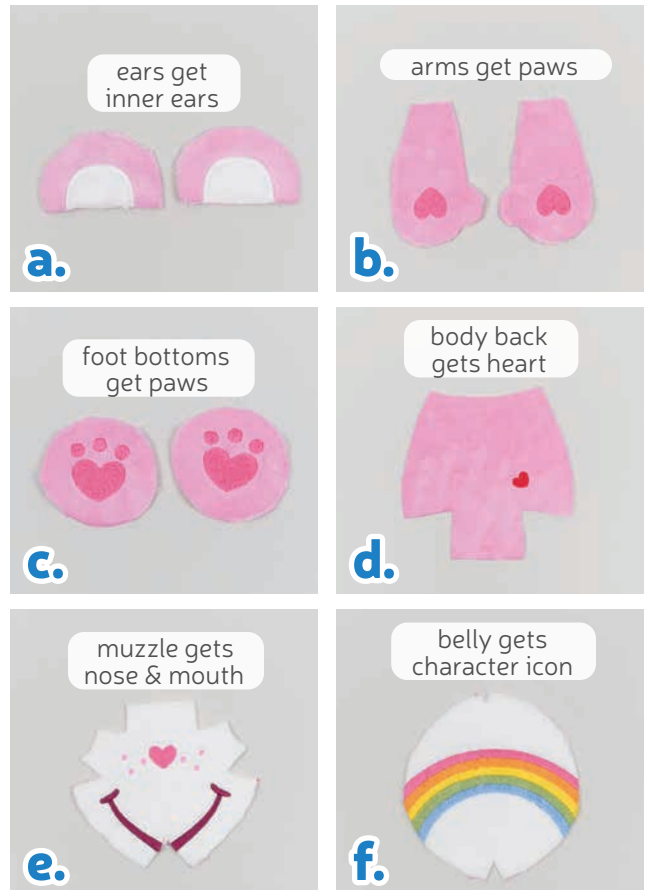


2. FINISH THE EYE APPLIQUE

- Continue with the smaller eye pieces, like the *pupils*. Fuse them the same way using the paper pattern and photos as a guide.
- Next add the smaller pieces, the *eyelid* and the *eye shines*. Layer them on top of the current eye pieces.
- To complete the eyes, add the cheek lines along the bottom. This will create a happy look to the eye and a roundness to the cheek. Add the eyebrows above the eyes.

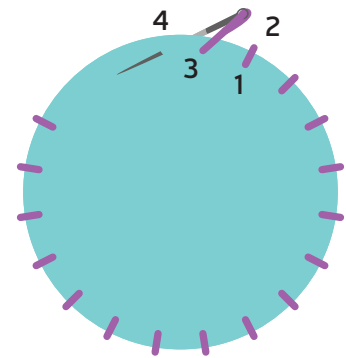
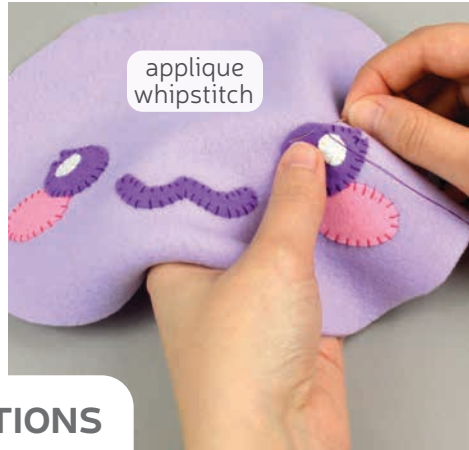
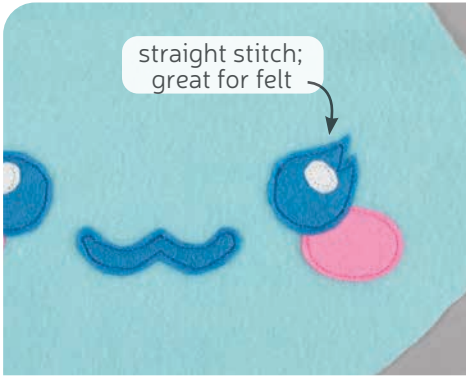
3. FINISH THE BODY APPLIQUE

- Take this time to also add the applique to your other pieces.
- The **EARS** (B) get *inner ears* (2, white).
 - The **ARMS** (E) get *arm paws* (2, dark accent color).
 - The **FOOT BOTTOMS** (G) get *foot paws* (8, dark accent color).
 - The **BODY BACK** (I) gets a *heart* (1, red)
 - The **MUZZLE** (J) gets a *nose* (1, main color), *freckles* (6, main color), and *smile or frown* (2 or 1, black or dark accent color).
 - Lastly the **BELLY** (C) gets the character's *icon*. Refer to the paper pattern for help with which colors to cut.
- This should complete the applique. If you used heavy duty fusible web, you can keep the pieces fused without sewing. If you used lighter fusible web, you'll want to stitch the pieces in place. A zigzag stitch with matching thread works nicely around the edges. For hand sewing options, see the next page.



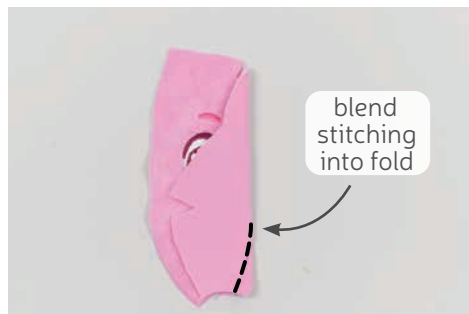
sew desu ne?

| WWW.CHOLYKNIGHT.COM |



4. OTHER APPLIQUE OPTIONS

- Other good options for applique include a straight stitch, which involves sewing around the edge of the applique pieces with a straight stitch using matching thread -- about 1/8" in from the edge.
- You can also applique by hand; I prefer a whipstitch. Thread a hand-sewing needle with some matching thread and knot it. Bring the thread up from the back of the project; about 1/8" in from the edge of the applique shape. Bring it down perpendicular from the curve, just outside of the applique shape. This completes one stitch.
- For the next stitch, bring the needle back up about 1/8" away from the previous stitch and 1/8" in from the edge just as in the first stitch. Once again, bring it down just outside the applique shape. Continue this way until you've sewn around the shape.



5. SEW THE HEAD FRONT DARTS

- Grab your **HEAD FRONT** pieces (A). These pieces have **darts** along the sides and bottom that are marked on the paper pattern. Fold the fabric along the point of the **dart** and match up the slanted lines of the **dart** with the right sides of the fabric facing. Pin the fabrics together.
- Sew from the opening of the **dart** into the fold of the fabric. Try to blend your stitching into the fold for a smooth transition and a rounder finish to the plush.
- Repeat this with the other **darts**. There should be one on the cheek, one along the bottom at the neck, and one above the eyebrow for 3 total. Then repeat this once more with your other head front piece for 6 **darts** total.

DARTS:

A wedge-shaped gap found in a pattern. When sewn in fabric, it creates a tuck in the fabric and develops a 3D shape. The diagonal sides of the wedge are the **LEGS**; these are matched up and sewn to the **POINT** of the dart.

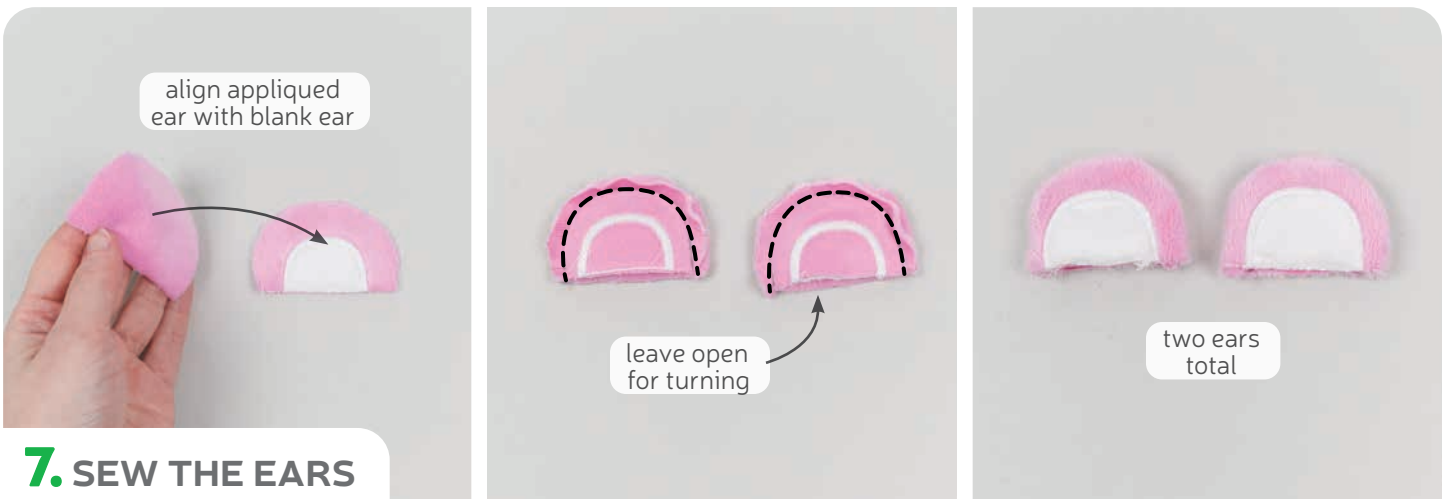
sew desu ne?

| WWW.CHOLYKNIGHT.COM |



6. SEW THE CENTER HEAD FRONT

- Grab your two **HEAD FRONT** pieces (A) and align them with right sides facing and the raw edges matching up. Sew the pieces together along the center front edge. This is the edge marked with **points 1 and 2** on the paper pattern if you need help with alignment. Pin the fabrics together.
- Sew the head front pieces together from **point 1 to 2**.
- Open up the pieces when complete.



7. SEW THE EARS

- Grab your **EAR** pieces (B). Take one with applique and one that's blank. Align them with right sides facing and the raw edges matching up.
- Sew the ears together along the long curved edge. Leave the straight edge free for turning the piece right side out later. Repeat this with your other ear pieces so you have a matching pair.
- Turn the ears right side out through the opening in the bottom.

sew desu ne?

| WWW.CHOLYKNIGHT.COM |



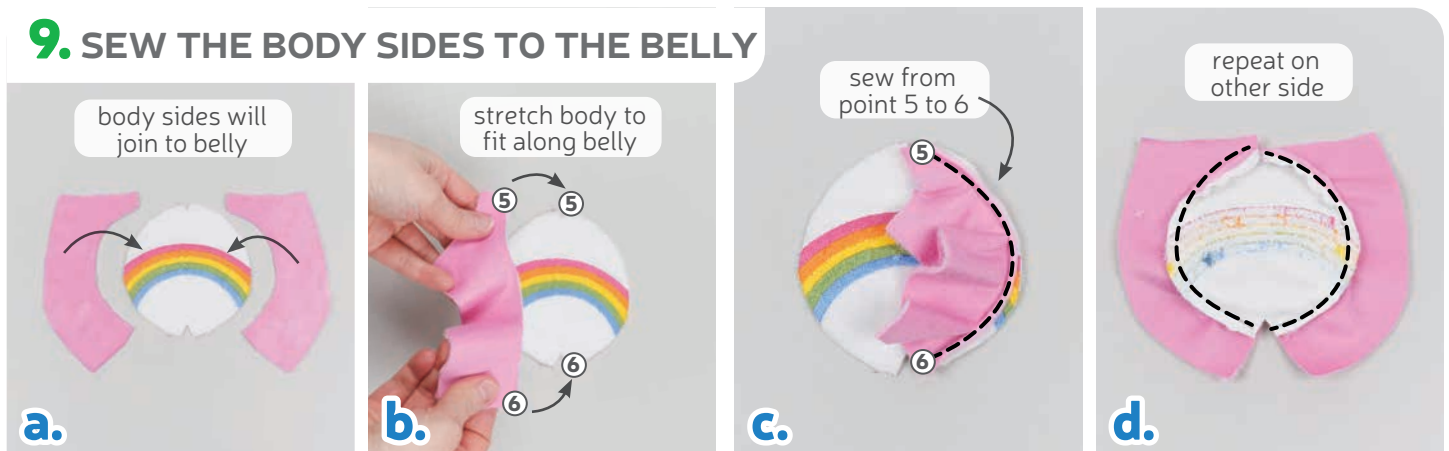
8. BASTE THE EARS

- Grab your **HEAD FRONT** so far (A). If you haven't already, note the **ear placement lines** found on the paper pattern for the head front. Align the ears within these lines so the inner ear applique is facing up.
- Now grab your ear and flip it so the inner ear fabric is facing down against the head. The raw edges of the ear and head front should be flush. Pin the ears in place.
- Baste the ears to the edge of the head front to hold them in place for future steps.

BASTING:

A form of temporary sewing meant to hold pieces in place. A long stitch length is often used for this reason. The finished result is not meant to be seen and sometimes is even removed later (depending on your project).

9. SEW THE BODY SIDES TO THE BELLY



- Grab your **BELLY** (C) and **BODY SIDE** (D) pieces. These pieces will join together along the inner edges as shown, but you can also look for the **numbered points** for help with alignment. Look for **points 5 and 6**.
- Take one of your body side pieces and stretch it so the inner curve fits around the outer curve of the belly. **Points 5 and 6** should match up at the corners. Pin the fabrics together from **point 5 to 6** with right sides facing.
- Sew the body side to the belly from **point 5 to 6**.
- Repeat this on the other side with your other body side piece.

sew desu ne?

| WWW.CHOLYKNIGHT.COM |



10. SEW THE BELLY DARTS

- Now that the **BODY SIDES** (D) are attached, this should create two large **darts** at the top and bottom of the **BELLY** (C). Take your body front so far and fold it in half to match up the slanted edges of the darts. This should match up **point 2 and 5** at the top and **point 6 and 8** at the bottom.
- Sew the top and bottom **darts** similar to previous darts. Start at the opening and work your way into the fold of the fabric. For the top you'll sew through **points 2 and 5**. For the bottom you'll sew through **points 6 and 8**.
- Open up the piece when complete and it should look like the third photo.

11. SEW THE FRONT NECK



- Grab your body front and head front so far. The head front will join to the body along the neck. This should be from **point 4 to 2** and back to **point 4** on the other side.
- Line up the head with the body so right sides are facing and **points 4 and 2** match up. Pin the fabrics together.
- Sew the head to the body from **point 4 to 2 to 4**.
- Open up the pieces when complete.

sew desu ne?

| WWW.CHOLYKNIGHT.COM |



12. SEW THE ARMS

- Grab your **ARM** pieces (E). Take one with the applied paw and one that's blank. Align them with right sides facing and the raw edges matching up. Pin the fabrics together.
- Sew the pieces together along the rounded edge with the thumb. Leave the straight edge open for turning the piece right side out later.
- Trim the excess seam allowance at the tight corners and curves of the hand. Trim around the thumb so it turns more cleanly later. Repeat this step once more with your remaining arm pieces so you have a matching pair.



13. TRIM THE ARMS

- Turn the **ARM** right side out through the opening and define the thumb with a chopstick or similar turning tool.
- Next we're going to adjust the opening of the arm so the hands point downward. You can skip this if you prefer arms that stick straight out. If you haven't already, note the **trimming guide line** found on the paper pattern for the arm. You can see how the finished result is attached in **STEP 15**. Fold the arm so the seams along the top match up. This should make the thumb point toward you. Fold the arm template along the **fold line** and line up the template with the applied side of the arm.
- Use the **trimming guide** to trim the fabric from the applied side of the arm. Repeat this with your other arm. Just be sure to also trim on the applied side so you have a mirrored pair.

sew desu ne?

| WWW.CHOLYKNIGHT.COM |

14. STUFF & CLOSE THE ARMS

- Stuff the arms lightly with stuffing. Stuff the thumb with a small bit of stuffing so it doesn't deflate later over time. If you keep the stuffing light, it will make attaching the arms to the body much easier for future steps.
- Line up the slanted open edges of the arm once again and baste the arms closed. This will keep the stuffing inside and ensures the edges stay flush. Repeat this with both arms so you have a mirrored pair.



15. BASTE THE ARMS

- Grab your body front so far. If you haven't already, note the **arm placement lines** found on the paper pattern for the **BODY SIDE (D)**. Align your arms within these **placement lines** so the hands are pointing downward and the thumbs are pointing toward you.
- Now grab one of your arms and flip it inward so the raw edge is flush with the body and the thumbs are now pointing away from you. Pin the arm to the body along the raw edges.
- Baste the arms to the body along the edge and repeat with the other arm for a mirrored pair.

sew desu ne?

| WWW.CHOLYKNIGHT.COM |

16. SEW THE LEGS

- Grab your **LEG** pieces (F). Take two and align them with right sides facing and the raw edges matching up. Pin the fabrics together.
- Sew the pieces together along the sides only. Leave the short straight edge at the top and the curved edge at the bottom open. This should take you from the top corner down to the **circle marking** on both sides.

Repeat this with your other leg pieces so you have a matching pair.



17. ATTACH THE FOOT BOTTOMS

- Grab your **FOOT BOTTOM** pieces (G). The open bottom edge of the **LEGS** (F) will join to these pieces. You can look for the **circle markings** for help with alignment. The **open circle marking** will match up at the top of the foot at the toe. The **filled circle marking** will match up at the bottom of the foot at the heel.

Make sure right sides are facing and pin the leg to the foot bottom all the way around.

- Sew the leg to the foot bottom all the way around.
- Trim the seam allowance at the curve where the foot meets the leg. This will help the foot turn more cleanly.
- Turn the leg right side out, then repeat this with your other leg and foot pieces for a matching pair.



sew desu ne?

| WWW.CHOLYKNIGHT.COM |

18. TRIM THE TOP OF THE LEGS

- a.** Next we're going to adjust the opening of the leg so the legs point straight downward. You can skip this if legs that stick outward a bit don't bother you.

If you haven't already, note the **trimming guide line** found on the paper pattern for the leg. This will be used to adjust the leg so the legs point downward in the finished plush.

You can see how the finished result is attached in **STEP 20**. Fold the leg so the seams along the top match up. This should make the toe point toward you. Similar to the arm, fold the leg template along the fold line and line up the template with the right side of the leg.

- b.** Use the **trimming guide** to trim the fabric from the right side of the leg. Repeat this with your other leg but trim it along the left side for a mirrored pair.



19. STUFF THE LEGS

- a.** Stuff the legs lightly with stuffing. If you keep the stuffing light, it will make attaching the legs to the body much easier for future steps.
- b.** Line up the slanted open edges of the leg once again and baste the legs closed. This will keep the stuffing inside and ensures the edges stay flush. Repeat this with both legs so you have a mirrored pair.



sew desu ne?

| WWW.CHOLYKNIGHT.COM |

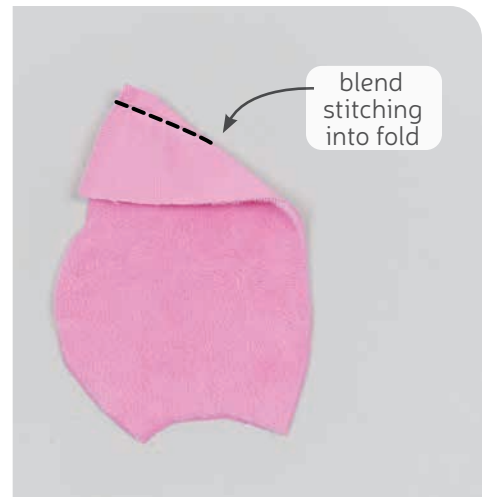


20. BASTE THE LEGS

- Grab your body front so far. If you haven't already, note the **leg placement lines** found on the paper pattern for the **BODY SIDE (D)**. Align your legs within these **placement lines** so the toes are pointing toward you.
- Now grab one of your legs and flip it inward so the raw edge is flush with the body and the toes are now pointing away from you. Pin the leg to the body along the raw edges.
- Baste the legs to the body along the edge and repeat with the other leg for a mirrored pair. Set your body front aside for a moment while we make the body back.

21. SEW THE HEAD BACK DARTS

- Grab your **HEAD BACK** pieces (H). These pieces also have **darts** similar to the head front from before. Sew them the same way, starting by folding the fabric along the point of the **dart**. Make sure right sides are facing and line up the slanted edges. Pin the fabrics together.
- Sew from the opening of the **dart** into the fold of the fabric. Try to blend your stitching into the fold for a smooth transition and a rounder finish to the plush. Repeat this with your other head back piece so both **darts** are sewn.



sew desu ne?

| WWW.CHOLYKNIGHT.COM |



22. SEW THE CENTER HEAD BACK

- Grab both of your **HEAD BACK** pieces (H). Align them with right sides facing and the raw edges matching up. Pin the fabrics together.
- If you haven't already, note the **opening for turning markings** found on the paper pattern for the head back. Transfer these markings onto the edge of the fabrics you've just pinned. Sew the head back pieces together along the center back edge, but leave the **opening for turning** that you marked. This should take you from **point 1 to point 7**.
- Open up the head back pieces when complete.



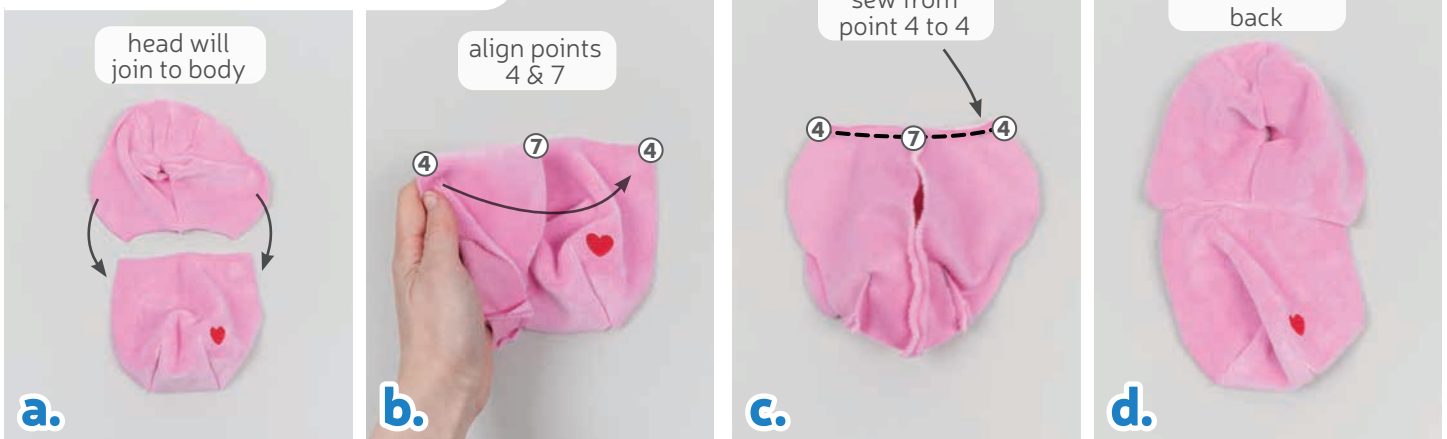
23. SEW THE BODY BACK DARTS

- Grab your **BODY BACK** piece (I). This piece also has **dart** similar to the head back from before. Sew them the same way, starting by folding the fabric along the point of the **dart**. Make sure right sides are facing and line up the slanted edges. Pin the fabrics together.
- Sew from the opening of the **dart** into the fold of the fabric. Try to blend your stitching into the fold for a smooth transition and a rounder finish to the plush.
- Repeat this with the other **dart** on the body back piece so you have two sewn **darts** total.

sew desu ne?

| WWW.CHOLYKNIGHT.COM |

24. SEW THE BACK NECK



- Grab your body back and head back so far. The head back will join to the body along the neck. This should be from **point 4 to 7** and back to **point 4**.
- Line up the head with the body so right sides are facing and **points 4 and 7** match up. Pin the fabrics together.
- Sew the head to the body from **point 4 to 7 to 4**.
- Open up the pieces when complete.

25. SEW THE HEAD FRONT & BACK

- Grab your body front from before as well as your body back so far. We're going to be sewing the body front to the back all the way around the edges. This can be done all in one go for experts, but beginners should take it one section at a time, starting with the head.

Line up the head front to the back with right sides facing and the raw edges matching up. This should line up **point 1** at the center top, **point 3** at the cheeks, and **point 4** at the neck seams. Make sure the ears are tucked inside and pin the head back to the front.



- Sew the head back to the front from **point 4 to 3 to 1**, then back down to **point 3** and ending at **point 4**.

sew desu ne?

| WWW.CHOLYKNIGHT.COM |



26. SEW THE BODY FRONT & BACK

- Next, line up the body front with the back along the bottom half. Make sure the arms and legs are tucked inside. This should line up **point 4** at the neck seams and **point 8** at the center bottom. Make sure right sides are facing and pin the fabrics together.
 - **NOTE:** *if this is too bulky to sew because of the arms and legs, you can try just sewing the sides first (with the arms). Then after the arms, shift things out of the way and sew the bottom (with the legs). If that still isn't working, you can always open up the leg seams to remove some of the stuffing, then add it back by hand later.*
- Sew the bottom half of the plush going from **point 4** around through **point 8** and ending at **point 4** on the other side.
- Turn the body right side out through the opening in the back of the head.

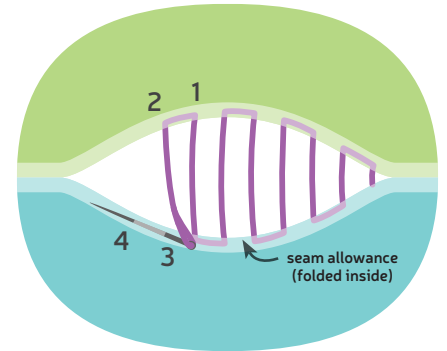
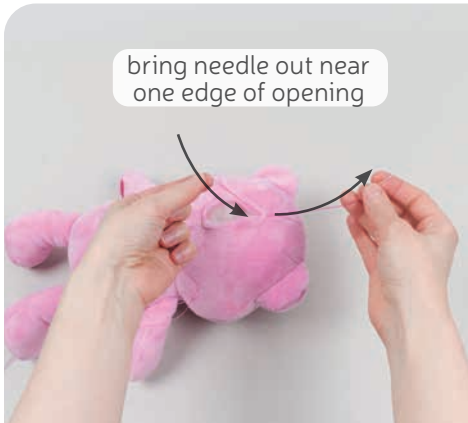


27. STUFF THE BODY

- Begin stuffing the body. Start by stuffing the bottom. Get plenty of stuffing near the darts in the bottom of the plush so it's firm and full. This will help the plush sit better later.
- Continue working your way up the body, neck, and head. When you're stuffing the head, be sure to get plenty in the cheeks so the darts are firm and full and the cheeks look nice and round.
- Finish stuffing the rest of the head firmly until the entire body is full.

sew desu ne?

| WWW.CHOLYKNIGHT.COM |



28. STITCH THE HEAD CLOSED

- Once the body is stuffed, make sure the seam allowances in the opening are tucked inside and prepare to ladder stitch it closed. Thread a hand-sewing needle and knot it at the end. Insert the needle from the inside of the opening and out of the plush near one edge of the opening. This will leave the knot inside the plush.
- Ladder stitch the head closed. Take a $\frac{1}{8}$ " stitch into the fold of one side of the opening, then go across and take another. Keep stitching down the opening until you reach the end.

29. TRIM THE THREADS

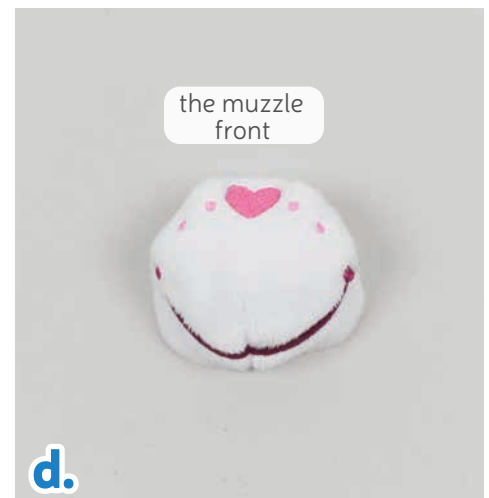
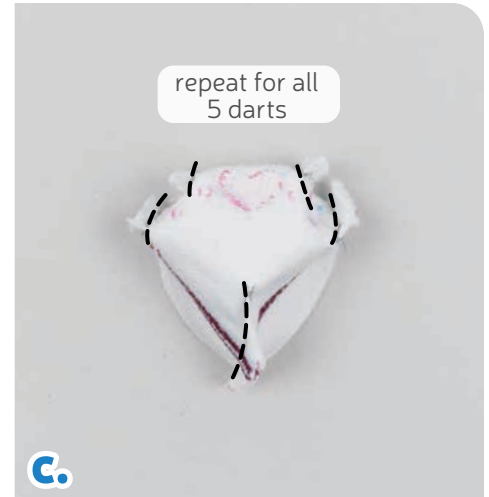
- When you're finished, stitch a knot into the end of the seam. Then insert the needle near the finished knot. Bring the needle out about 1-2" away and pull it through.
- Pull the thread taut while snipping the thread. The excess thread should sink back inside the plush -- all hidden!



sew desu ne?

| WWW.CHOLYKNIGHT.COM |

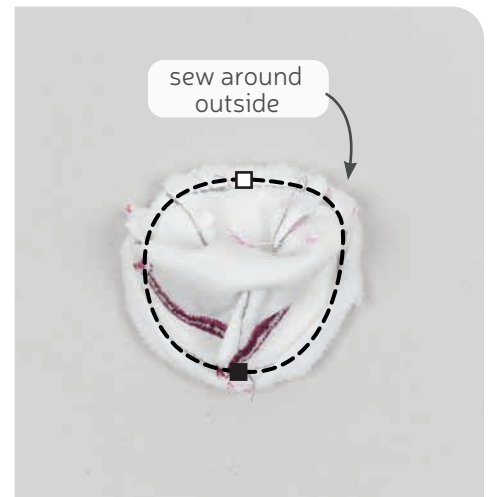
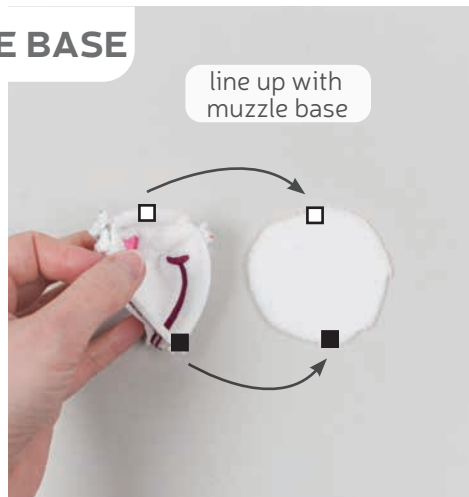
30. SEW THE MUZZLE DARTS



- Grab your **MUZZLE** piece (J). There should be 5 **darts** around the outer edge of the muzzle. These will be sewn similar to previous **darts** like for the head front. Fold the fabric at the corner of the **dart** and match up the slanted lines. Pin the fabrics together.
- Sew from the opening of the **dart** into the fold of the fabric. Try to blend your stitching into the fold for a smooth transition and a rounder finish.
- Repeat this with all of your **darts** for 5 total. There should be 2 small **darts** at each upper corner, and 1 large **dart** at the center bottom.
- If you flip the muzzle right side out it should look something like photo D.

31. ATTACH THE MUZZLE BASE

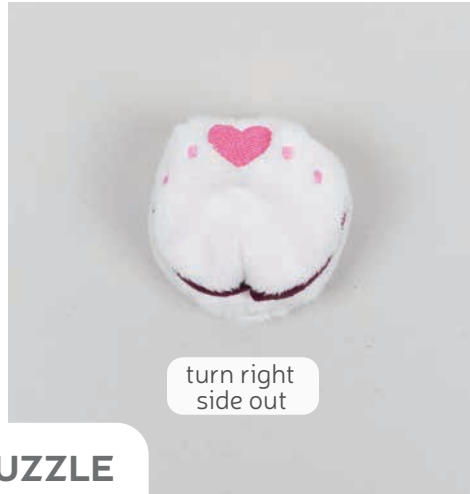
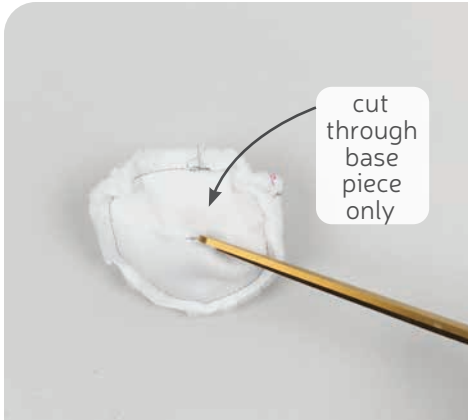
- Grab your **MUZZLE BASE** piece (K). Grab your muzzle so far and align the open edge around the outside of the muzzle base. You can also look for the **pattern markings** for help with alignment. The **open square marking** will line up at the center top, and the **filled square marking** will line up at the center bottom. Pin the muzzle to the base all the way around.



- Sew the muzzle to the base all the way around the shape.

sew desu ne?

| WWW.CHOLYKNIGHT.COM |



32. CLIP & TURN THE MUZZLE

- To turn the **MUZZLE**, cut a short slit through the **MUZZLE BASE** piece only, across the middle. You can also look for the *cutting guide* found on the paper pattern.
- Turn the muzzle right side out through the opening you've cut.
- Stuff the muzzle semi-firmly using the opening in the base.

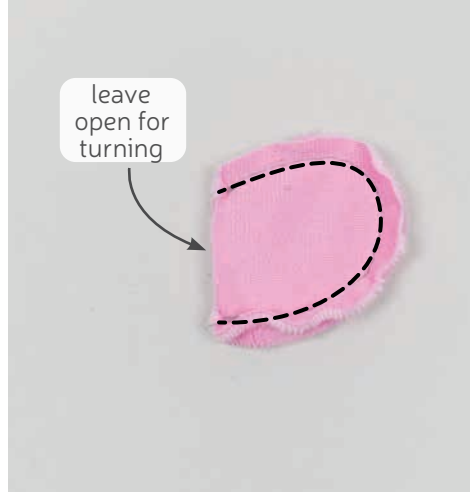
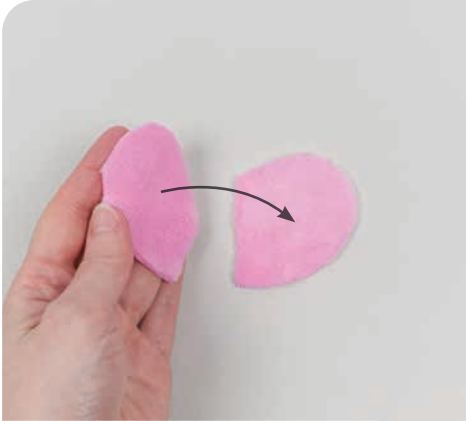
33. ATTACH THE MUZZLE

- Grab your stuffed muzzle and align it onto the front of the head. It should be centered between the eyes just about in line with the bottom of the eyes.
- Ladder stitch the muzzle to the face just inside of the **muzzle seam** (from step 31). Sew all around the muzzle to complete.



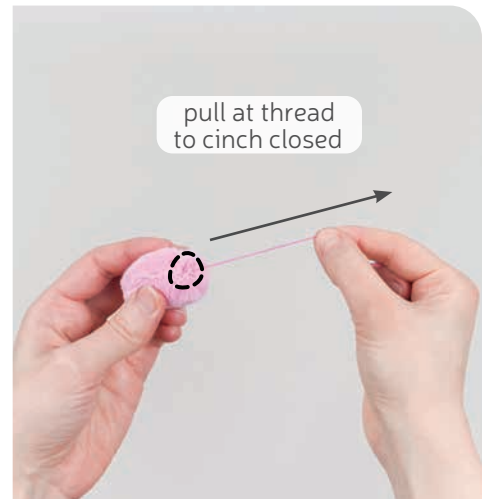
sew desu ne?

| WWW.CHOLYKNIGHT.COM |



34. SEW THE TAIL

- Grab your **TAIL** pieces (L). Align them with right sides facing and the raw edges matching up.
- Sew the pieces together along the curved edge. Leave the short straight edge free for turning the piece right side out later.
- Turn the tail right side out through the opening in the base.



35. CINCH THE TAIL CLOSED

- Stuff the **TAIL** (L) semi-firmly with stuffing.
- Grab a hand sewing needle and thread it. Sew a gathering stitch around the open edge of the tail, about $\frac{1}{4}$ " away from the raw edge.
- Pull at the gathering thread to cinch the tail closed. Sew a few knots into the center to hold it closed.

GATHERING:

The process of shortening the length of a piece of fabric by sewing long stitches through it. When the thread is pulled, it forms small folds that ruffle the fabric.

GATHERING STITCH:

A long version of the running stitch, which is a stitch done by weaving the needle in and out of a length of fabric going along a line. The long stitches (about $\frac{1}{4}$ "- $\frac{1}{2}$ " long) gather the fabric when pulled later.

sew desu ne?

| WWW.CHOLYKNIGHT.COM |



36. ATTACH THE TAIL

- a. Take your stuffed **TAIL** (L) and align it onto the back of your bear's body. Center it on the back about in line with the tips of the body darts. This position will help balance it so it sits up nicely.
- b. Ladder stitch the tail to the body all the way around the base.



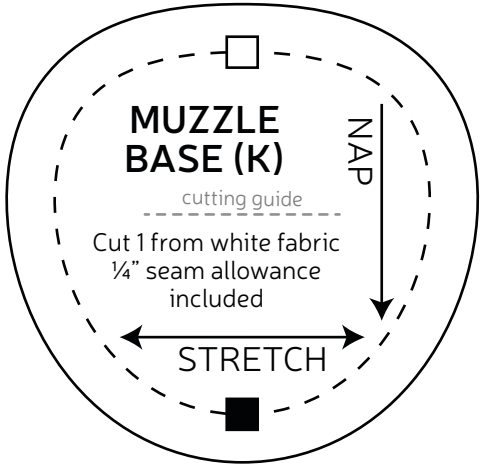
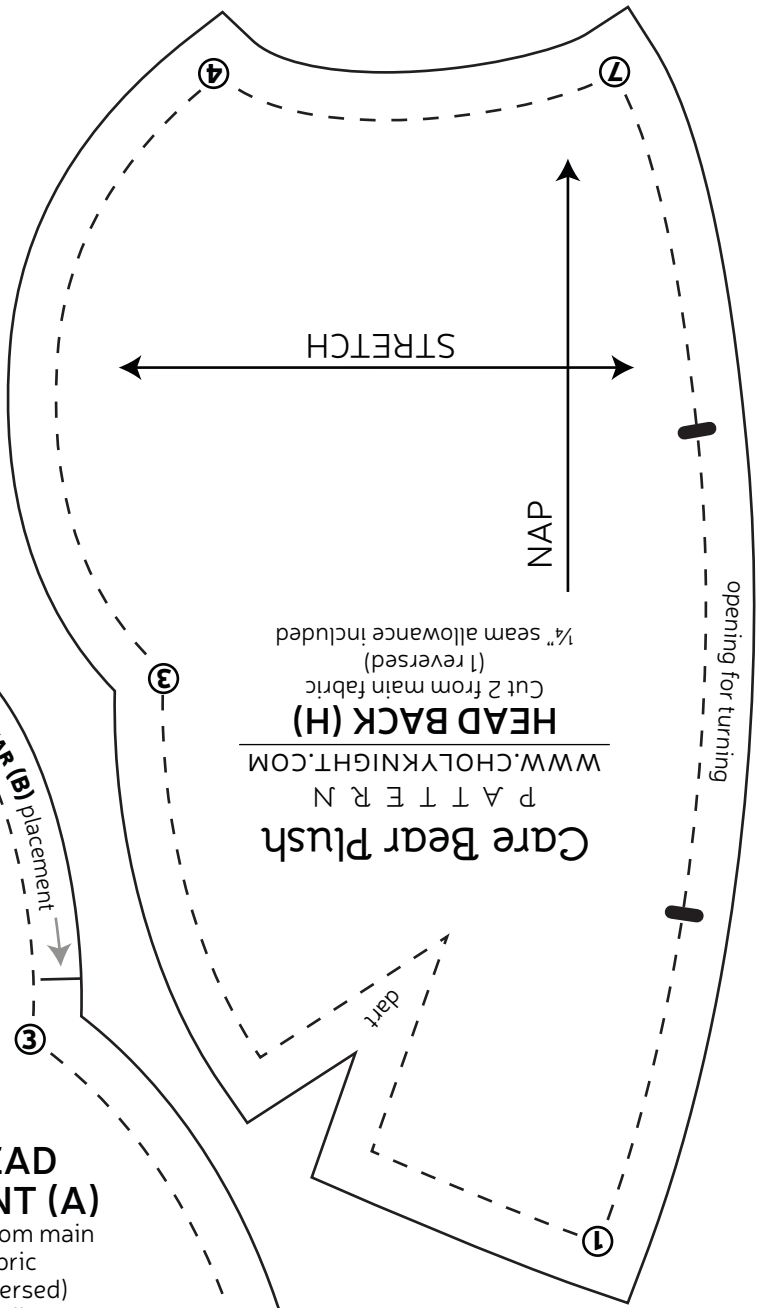
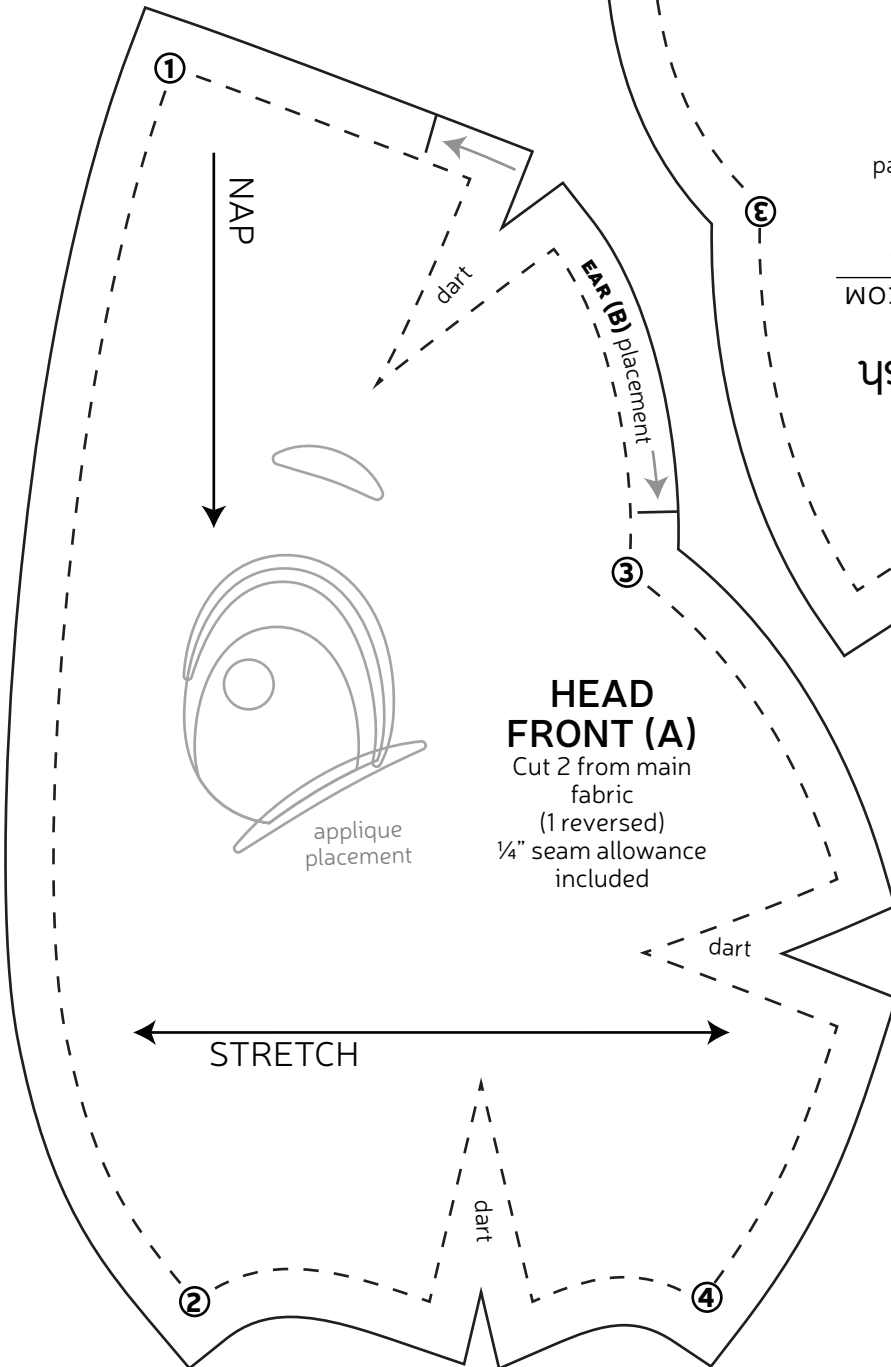
CONGRATS!
This completes your plush! Now give it a big hug!

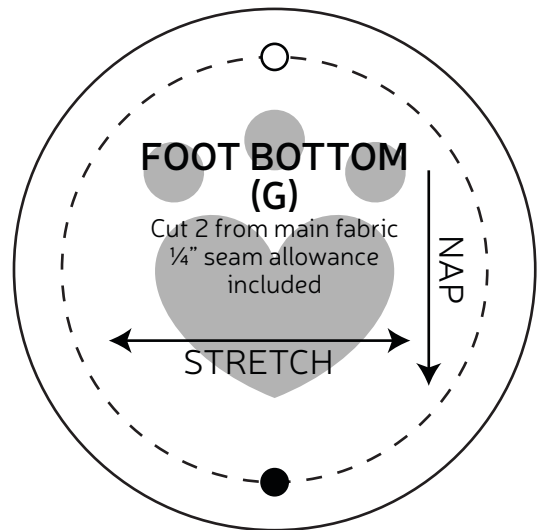
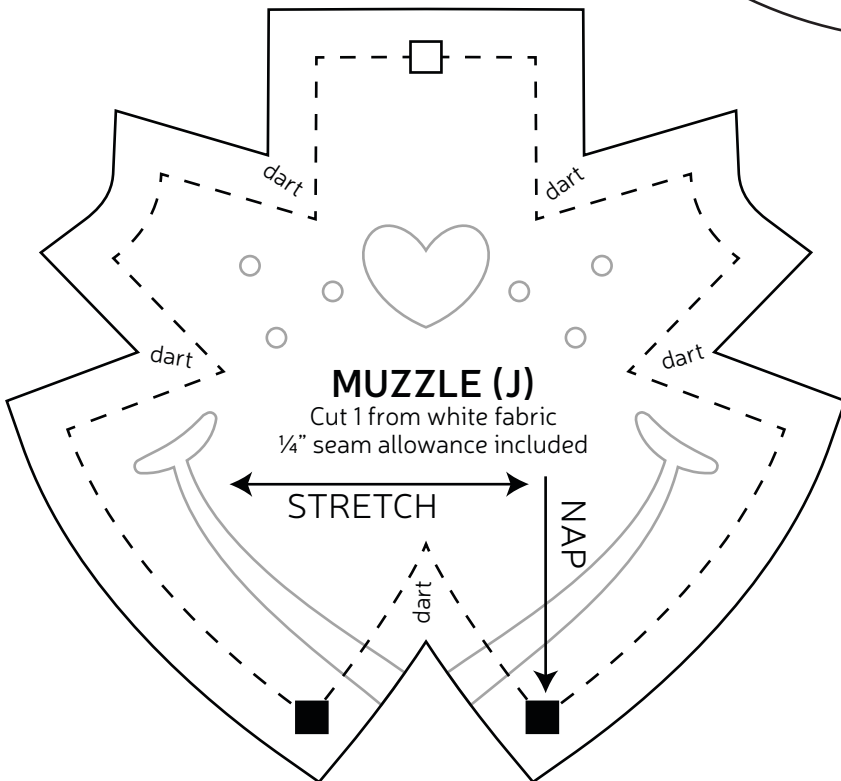
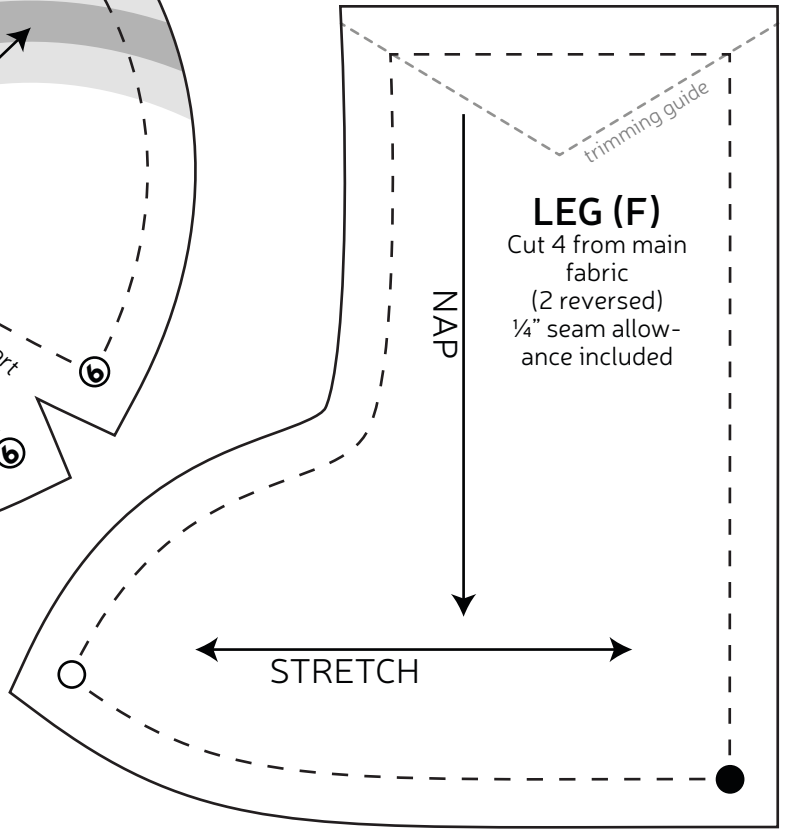
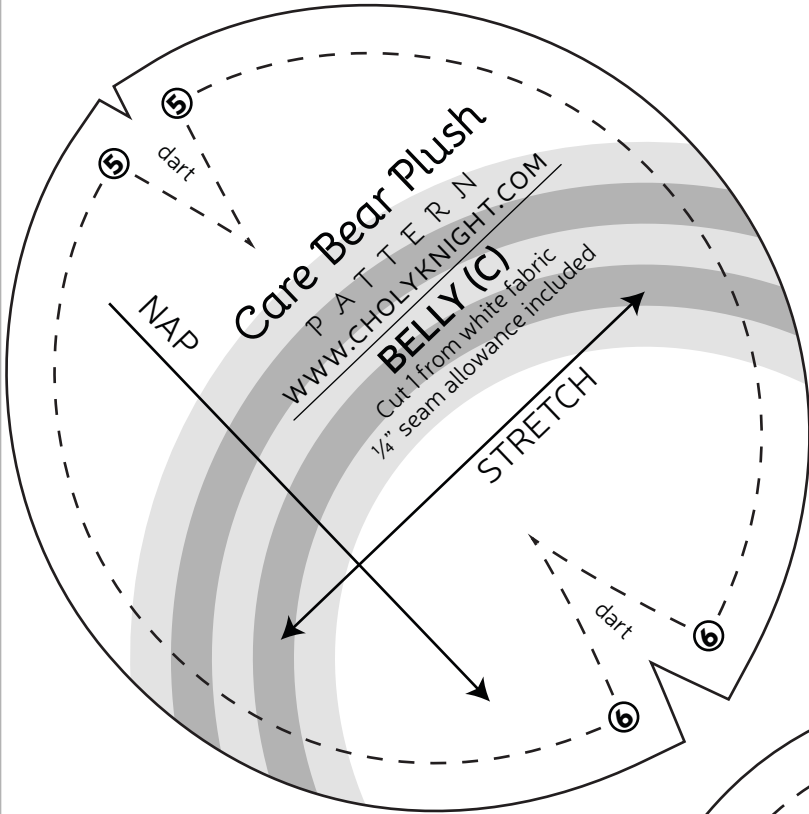
sew desu ne?

| WWW.CHOLYKNIGHT.COM |

TEST SQUARE 2"

measure this square to
be sure you've printed
at the proper
proportions





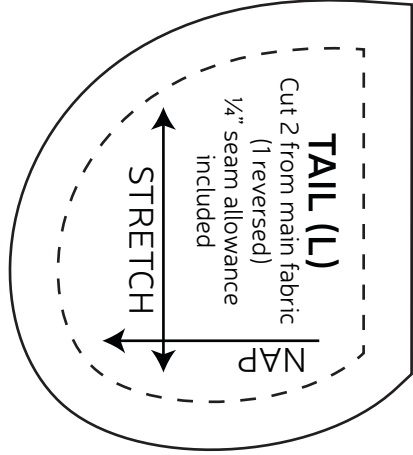
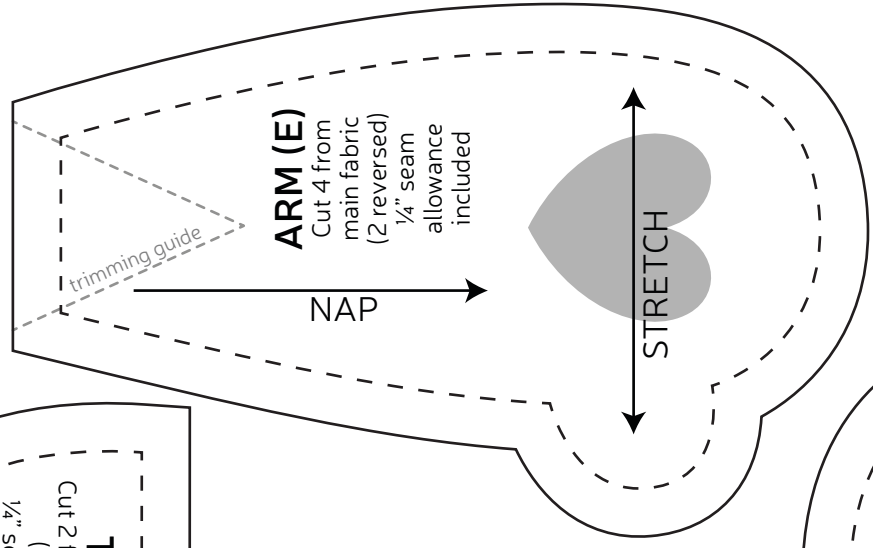
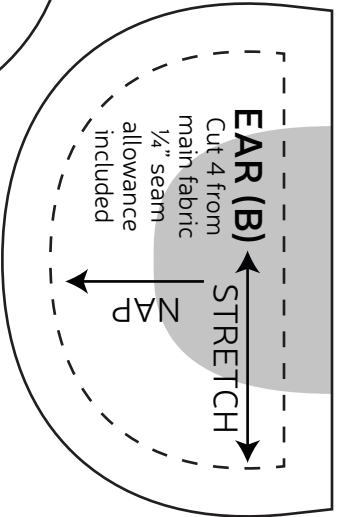
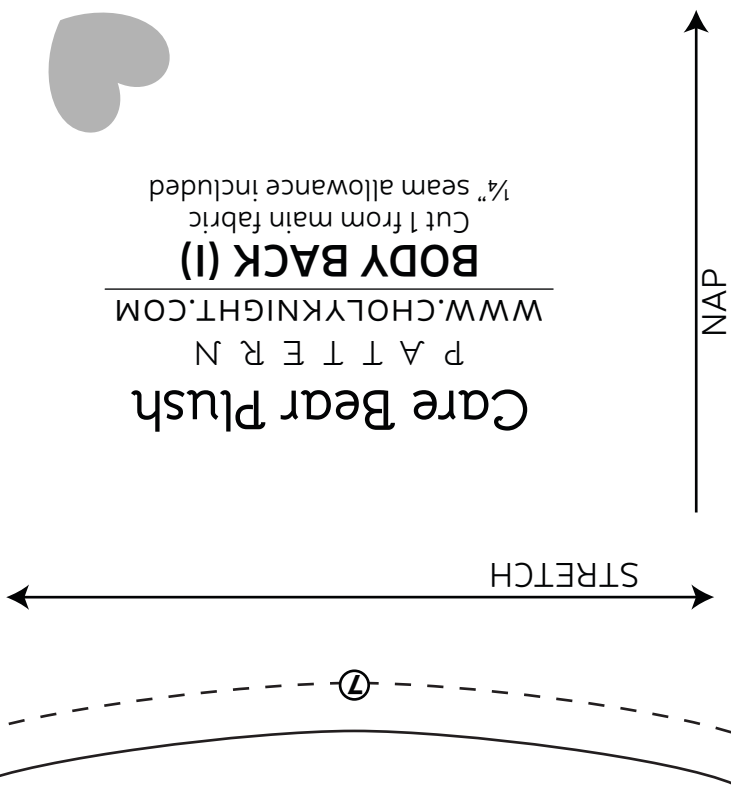
Care Bear Plush

P A T T E R N

WWW.CHOLYKNIGHT.COM

BODY BACK (I)

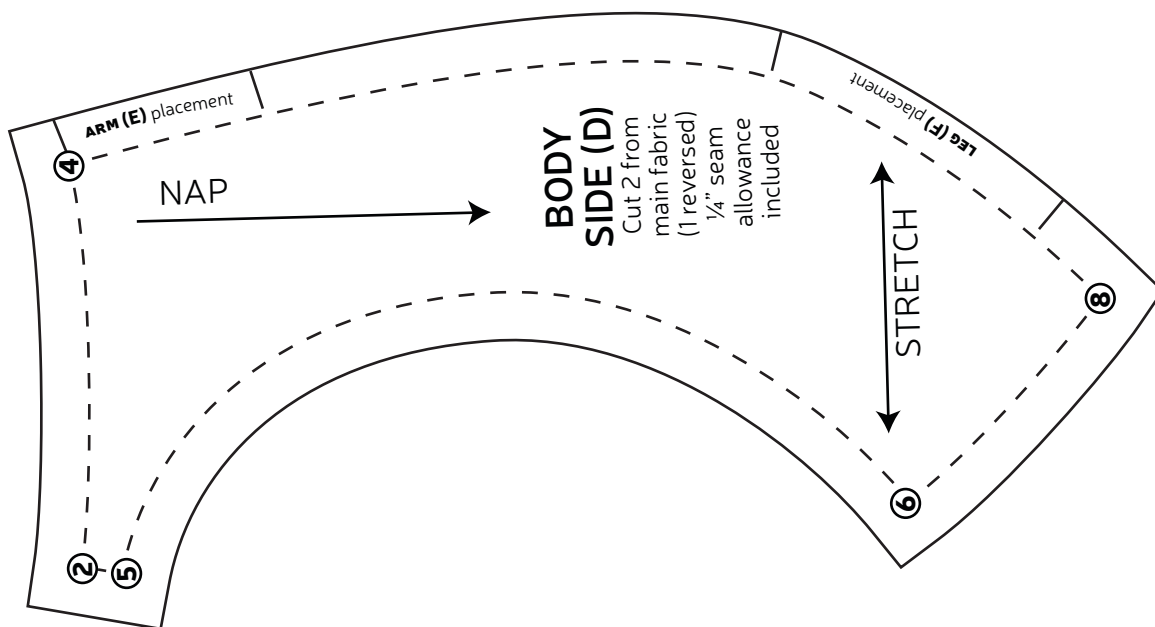
Cut 1 from main fabric
1/4" seam allowance included



EAR (B)
Cut 4 from
main fabric
1/4" seam
allowance
included

ARM (E)
Cut 4 from
main fabric
(2 reversed)
1/4" seam
allowance
included

TAIL (L)
Cut 2 from main fabric
(1 reversed)
1/4" seam allowance
included



APPLIQUE FOR ALL BEARS

CHEEK LINES
applique
 trace & cut 2 from dark color



NOSE
applique
 trace & cut 1 from main color



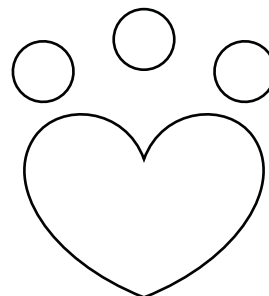
ARM PAW
applique
 trace & cut 2 from dark color



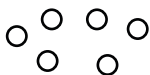
EYE SHINES
applique
 trace & cut 2 from white



FOOT PAW
applique
 trace & cut 2 each from dark color



FRECKLES
applique
 trace & cut 1 each from main color



BOTTOM HEART
applique
 trace & cut 1 from red



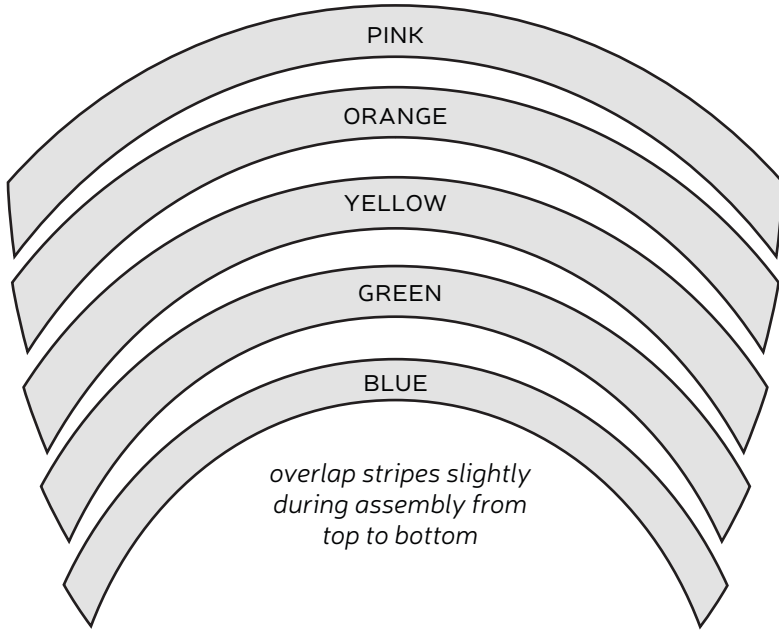
INNER EAR
applique
 trace & cut 2 from white



BELLY MARKINGS

CHEER BEAR RAINBOW

applique
trace & cut 1 each from
rainbow colors

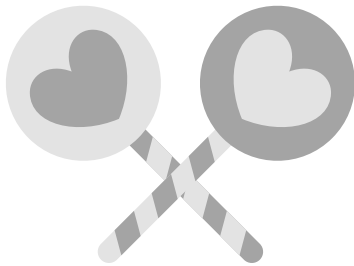


GOOD LUCK BEAR SHAMROCK

applique
trace & cut 1 from
green

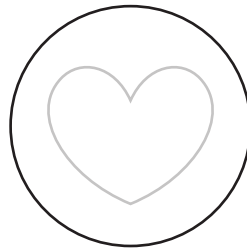


SHARE BEAR LOLLIPOPS



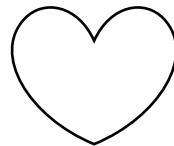
SHARE BEAR LOLLIPOP

applique
trace & cut 1 from
pink, 1 from blue



SHARE BEAR HEART

applique
trace & cut 1 from
pink, 1 from blue



SHARE BEAR LOLLIPOP STICK

applique
trace & cut 1 from
pink, 1 from blue



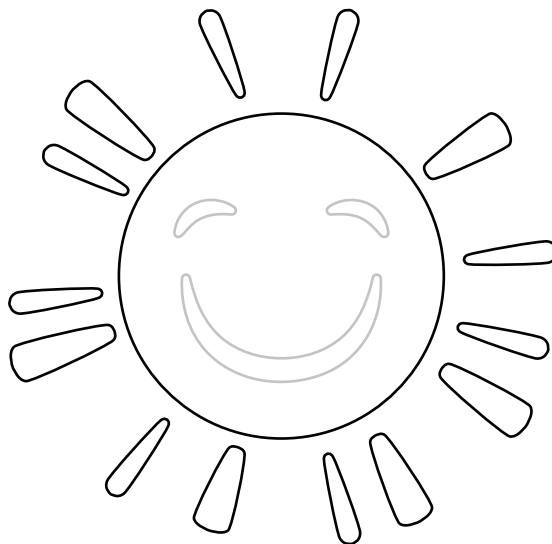
SHARE BEAR STICK STRIPES

applique
trace & cut 3 from
pink, 3 from blue



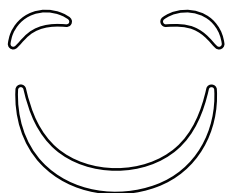
**FUNSHINE BEAR
SUN**

applique
trace & cut 1 each
from yellow



SUN SMILE

applique
trace & cut 1 each
from brown

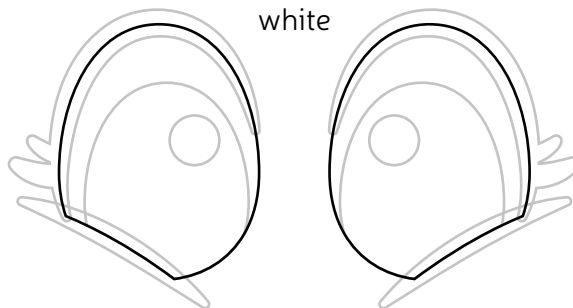


**HAPPY FACE
APPLIQUE**



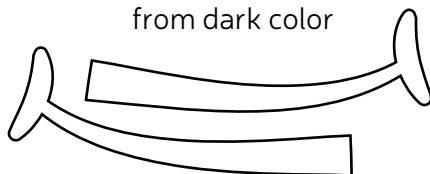
EYE WHITE

applique
trace & cut 1
each from
white



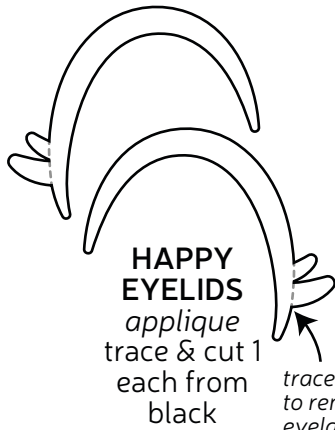
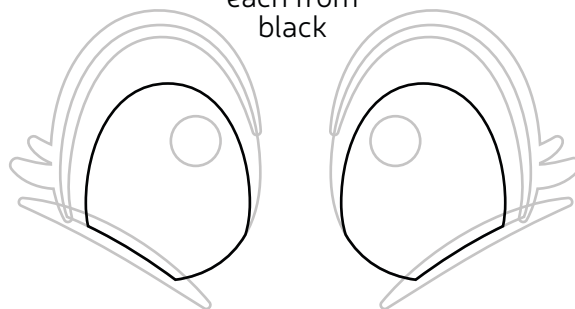
SMILE

applique
trace & cut 1 each
from dark color



PUPIL

applique
trace & cut 1
each from
black



HAPPY EYELIDS
applique
trace & cut 1
each from
black

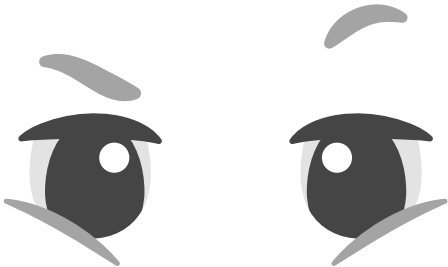
*trace here
to remove
eyelashes*

HAPPY EYEBROWS

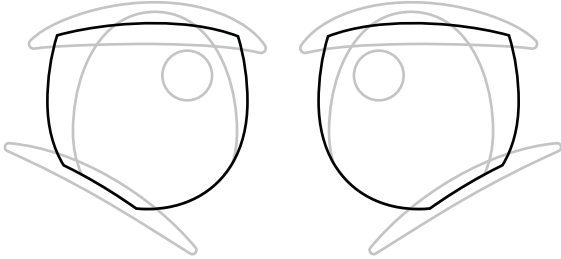
applique
trace & cut 1 each
from
black or dark color



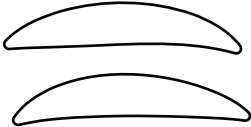
**GRUMPY BEAR
APPLIQUE**



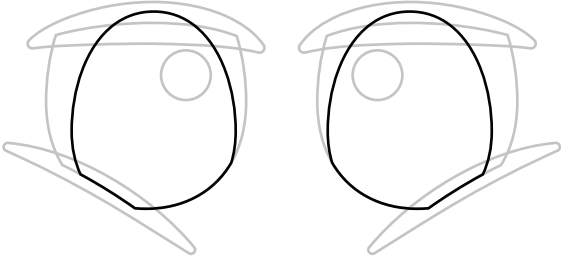
EYE WHITE
applique
trace & cut 1 each
from white



GRUMPY EYELIDS
applique
trace & cut 1 each
from black



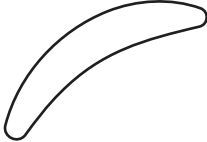
PUPIL
applique
trace & cut 1 each
from black



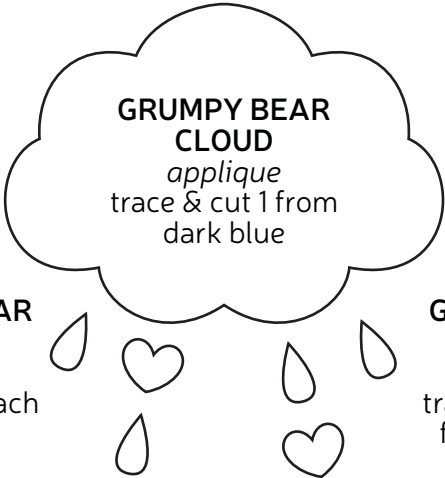
GRUMPY EYEBROWS
applique
trace & cut 1 each from
black or dark color



FROWN
applique
trace & cut 1 from
dark color



**GRUMPY BEAR
CLOUD**
applique
trace & cut 1 from
dark blue



**GRUMPY BEAR
HEART**
applique
trace & cut 1 each
from red

**GRUMPY BEAR
RAINDROP**
applique
trace & cut 1 each
from dark blue

