

TOOTHLESS

WYVERN & DRAGON PLUSH
SEWING PATTERN HACK



a free sewing pattern by

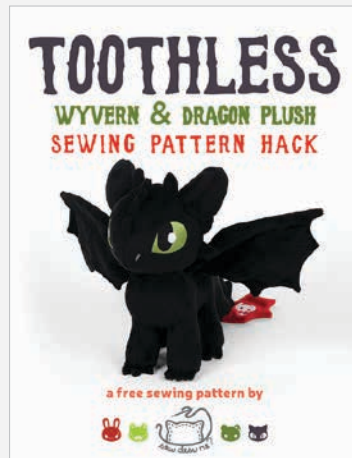


TOOTHLESS PATTERN HACK

This pattern hack is meant to work alongside my **WYVERN & DRAGON PLUSH SEWING PATTERN**. It is a set of extra templates that add additional features to the base head and body of the original **DRAGON** pattern. With those together you can make an epic Night Fury dragon! In these instructions you'll find a guide for sewing the wings, horns, spikes, and tail fins and how they're incorporated into the original design.



+



=



sew desu ne?

| WWW.CHOLYKNIGHT.COM |

DIFFICULTY:

This version of the pattern has about the same difficulty as the original. The hardest parts are likely all the curves in the body and the time needed to add all the hand sewn details.

MAKES:

ONE PLUSH: About 9½" tall from bottom of feet to top of head, 5½" wide from each side of body, and 12" long from nose to tip of tail.

SKILLS USED:

- ladder stitch
- fusible web applique
- sewing curves (straight to curved pieces, inner to outer curves, outer to outer curves, etc.)
- darts
- matching notches & points
- basting
- gathering; gathering stitch
- using wire

FABRICS & NOTIONS:

- ½ yd. of black fabric for main body
- 9" x 5" of red fabric for accent tail tip
- 5" x 8" of scrap fabric for poly pellet pouch
- basic sewing tools (sewing machine, scissors, iron, ironing board, needles, pins, fabric marker, seam ripper, point turner or chopstick)
- matching sewing thread
- poly-fil stuffing
- poly pellets
- spoon or funnel for filling poly pellets
- **APPLIQUE SUPPLIES:**
 - 4" x 4" of green applique fabric for eyes
 - 3" x 3" of black applique fabric for pupils
 - 4" x 4" of white applique fabric for eye shines and skull
 - 2" x 2" of gray applique fabric for nostrils
 - 6" x 6" of light or heavy duty fusible web
- **WIRING SUPPLIES:**
 - 20" piece of 12-18 gauge jewelry wire
 - wire cutter
 - scrap fabric for wrapping wire
 - hot glue for securing scrap fabric

**SEE PAGE 5 FOR MORE
INFORMATION ON WIRE**

fabric comparison:



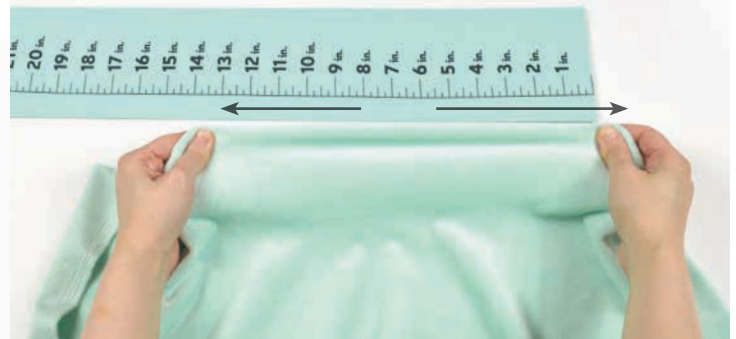
SUGGESTED MAIN FABRICS:

MINKY OR FLEECE

Medium weight, plush fabrics with about 20%-30% stretch along the crosswise grain work best for this project. The varieties shown to the left are some good options and names to look for. Try to avoid heavyweight versions of fleece that are intended for outdoor apparel or they may cause trouble for the detailed areas.

You can also use non-stretch fabrics (such as felt), but be aware that the curves will be more difficult to sew and the result will look different. The plush will become more elongated and the edges will look sharper.

10" of minky stretches to 13" = 30% stretch



MINKY VS. FELT



sew desu ne?

| WWW.CHOLYKNIGHT.COM |

FUSIBLE WEB:

- Fusible web adhesive is a sheet of adhesive with a paper backing.
Not to be confused with fusible interfacing, which is adhesive attached to a fabric/fiber backing.
- Some common brands are **Pellon & HeatnBond**
- In countries outside the US, it may also be known as **bondaweb**
- It comes in **light** and **heavy duty** varieties. Lightweight strength is meant for applique you intend to sew later. Heavy duty versions are for a no-sew bond. If you try to sew them later your machine might have trouble penetrating the glue.



APPLIQUE FABRICS:

- Good applique fabrics include **flannel, cotton, felt, minky, and fleece**.
- Flannel and cotton are best for detailed applique with a lot of layers because they're thinner. Meanwhile felt, minky, and fleece are better for simpler applique like body markings.
- **Flannel** is used in the example instructions (page 8).



JEWELRY WIRE FOR WINGS:

- Wire is optional for the **WINGS**.
- For the best results, use 12 to 18 gauge jewelry wire.
- Jewelry wire is a good medium-strength wire that will give the wings support and make them posable.
- To bend and cut the wire, you'll need a pair of pliers (jewelry pliers from your craft store will work fine). Many of these pliers come with a wire cutter built in, so there's no need to buy a separate wire cutter.
- Don't try to cut the wire with regular craft or fabric scissors or it could seriously damage the blades.
- To make the ends of wire safe, they're bent over and then the whole piece of wire is wrapped in scrap fabric (see page 16).



sew desu ne?

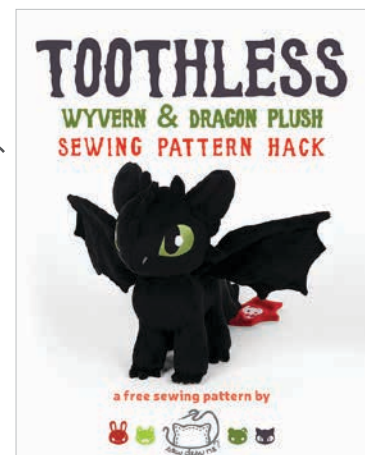
| WWW.CHOLYKNIGHT.COM |

FABRIC CUTTING GUIDE:

Follow the cutting guide below for what colors to cut from the pattern pieces from the **WYVERN & DRAGON PLUSH PATTERN**. Above are the original pieces and below are new pattern hack pieces.

The new pieces have the same letter as the original, but a new prefix: **T FOR TOOTHLESS**. For example the **WINGS (K)** have been changed to **T-K FOR TOOTHLESS**.

LABEL	NAME	COLOR
ORIGINAL PATTERN		
A	HEAD FRONT	BLACK
B1	NOSE SPIKES	BLACK
D	HEAD BACK	BLACK
E2	BODY	BLACK
F	INNER LEG	BLACK
G2	BELLY	BLACK
I	CLAWS	BLACK
J	FOOT BOTTOM	BLACK
M	PELLET POUCH	SCRAP FABRIC
PATTERN HACK		
T-C	HEAD SPIKES	BLACK
T-H	BODY SPIKES	BLACK
T-K	WINGS	BLACK
T-L	HORNS	BLACK
T-N	TAIL FINS	BLACK, RED



sew desu ne?

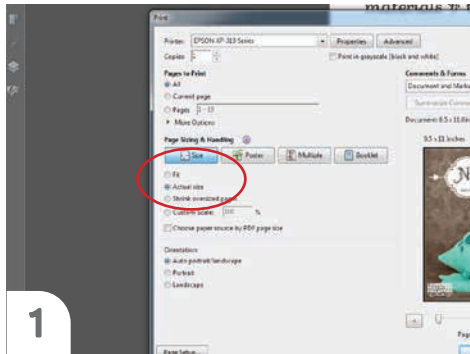
| WWW.CHOLYKNIGHT.COM |

PRINTING THE PATTERN:

Set your computer to print **PAGE 19-21.**

If you're unfamiliar with printing and assembling a .pdf pattern, read the steps to follow.

For the best results, use a .pdf reader like **ADOBE READER.** That's what is shown here and will give you the most control over the settings.



1

At the print dialog box, check the box that says print at "Actual Size" or 100%. Any other selection (such as "Fit to page") will distort the pattern so it's slightly larger or smaller and we don't want that.



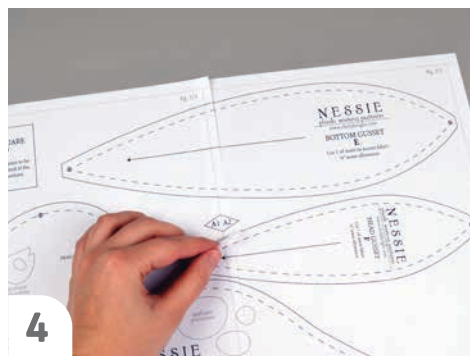
2

Print the pages needed for the file. You might have one or more. Either way, be sure you have the full collection by noting the page numbers in the corner.



3

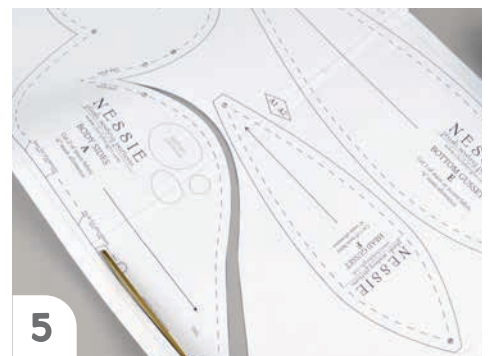
It's likely your printer will have a margin that ensures your image doesn't print to the very edge. Assembly will be easier if you trim off this blank margin edge. This will give you pages that overlap slightly during assembly. If you trim across the gray outline boxes, this will give you pages that don't overlap but rather butt against each other.



4

To line up the pattern pages, match up the corresponding diamond shapes. Each diamond will have a letter, so it's simply a matter of matching A1 to A2, B3 to B4 and so on. The faint gray lines indicate the border of every page, you should be able to line those up as well. When the diamond goes together, tape it in place.

If you have many pages, it's easier to tape up the pages into rows first. Then tape the rows together into a full block.



5

You can trace the patterns onto a different paper, or you can also just cut them straight from the printer paper -- be sure that each piece is fully taped together along the joins so they don't fall apart when you cut them.

sew desu ne?

| WWW.CHOLYKNIGHT.COM |

BEFORE YOU BEGIN:

- Briefly read the project instructions so you know what to expect.
- If desired, mark the cut fabric pieces with the markings and symbols from the pattern. Or wait until the applicable step before transferring.
- Note that a ¼" seam allowance is used throughout the project, which is included in the pattern templates.



Use the new applique templates on the **HEAD FRONT (A)** to replace the eyes from the original **WYVERN & DRAGON PLUSH** sewing pattern.

1. FUSE THE EYE APPLIQUE

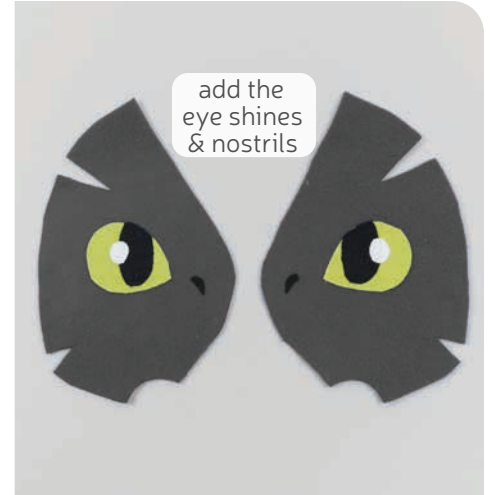
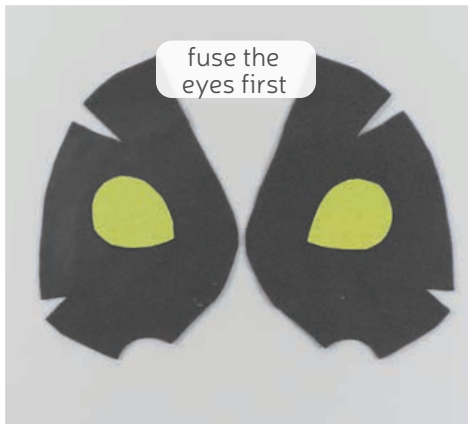


- Grab your fusible web and applique templates. Trace the pieces for the eyes and nostrils. You should have:
 - **eyes** (2, green)
 - **eye shines** (2, white)
 - **nostrils** (2, dark gray)
 - **pupils** (2, black)
- Fuse the bumpy (adhesive) side of the fusible web onto the applique fabrics.
- Cut out your applique pieces and grab your **HEAD FRONT** piece (A). Grab the **eye** applique piece. Set your paper pattern on top of the head front piece. Align the applique piece on top where the placement markings are. Next, carefully pull the paper pattern away while holding the applique piece in place.

sew desu ne?

| WWW.CHOLYKNIGHT.COM |

2. BUILD THE EYE APPLIQUE



- a. Fuse the first applique layer with your iron. Use a press cloth, such as a scrap piece of cotton. This will help protect any polyester or fuzzy fabrics from melting or scorching.
- b. Add the **pupil** pieces next. Use the paper pattern and photos as a placement guide.
- c. Lastly add the **eye shines and nostrils** to complete the face.

If you used heavy duty fusible web, you can keep the pieces fused without sewing, or you can sew them in place a number of ways. I've used a zigzag stitch here.

→ Refer to page 10 for some other applique options.

3. APPLIQUE THE TAIL FIN SKULL

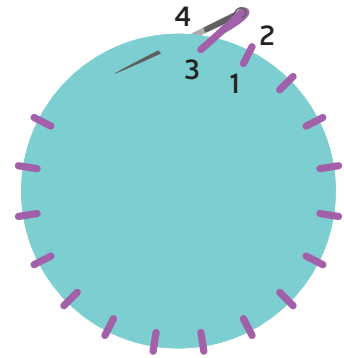
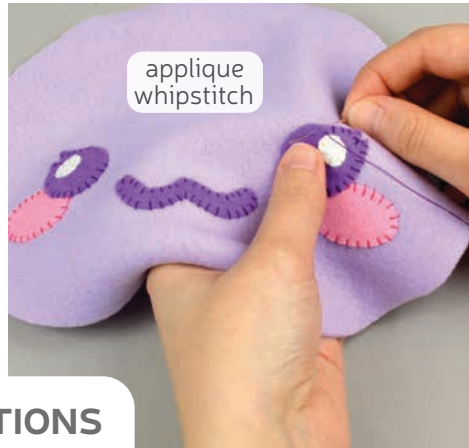
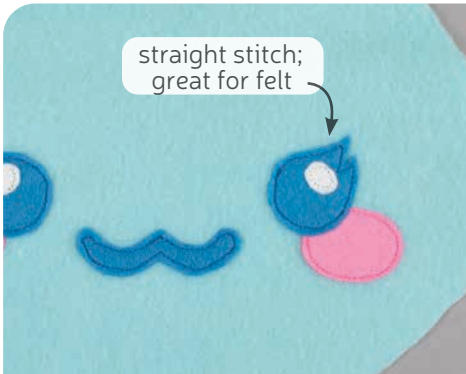
→ Also take this time to applique the tail fin skull.

- a. The red **TAIL FIN** (T-N) pieces also get **skull** applique. Follow the same steps as before, tracing the design and fusing it to your main fabrics.



sew desu ne?

| WWW.CHOLYKNIGHT.COM |



4. OTHER APPLIQUE OPTIONS

- Other options for applique include a straight stitch. That's done by sewing around the edge of the applique pieces with a straight stitch using matching thread -- about 1/8" in from the edge.
- You can also applique by hand using a whipstitch. Thread a hand-sewing needle with some matching thread and knot it. Bring the thread up from the back of the project; about 1/8" in from the edge of the applique shape. Bring it down perpendicular from the curve, just outside of the applique shape. This completes one stitch.
- For the next stitch, bring the needle back up about 1/8" away from the previous stitch and 1/8" in from the edge just as in the first stitch. Once again, bring it down just outside the applique shape. Continue this way until you've sewn around the shape.



Refer to **steps 4-9** from the original **WYVERN & DRAGON PLUSH PATTERN** to sew the **HEAD FRONT** and **NOSE SPIKES**. Stop before you reach the **SIDE SPIKES** (step 10). See below for a brief overview.

5. SEW THE HEAD FRONT

- Steps 4-5:** Sew the **HEAD FRONT** (A) darts.
- Steps 6-8:** Sew and baste the **NOSE SPIKES** (B1).
- Step 9:** Sew the center front seam.
- Up next are the **SIDE SPIKES** (T-C), which use a different piece than the original pattern.



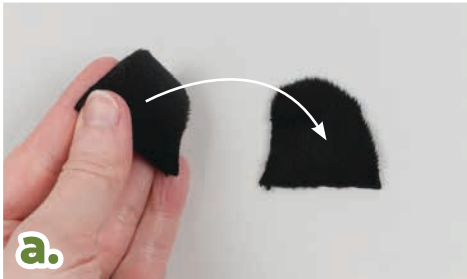
sew desu ne?

| WWW.CHOLYKNIGHT.COM |



The following step 6 will replace **steps 10-12** from the original pattern using the new **SIDE SPIKE** pieces (T-C).

6. BASTE THE SIDE SPIKES



- Grab your **SIDE SPIKE** pieces (T-C). Take two of them and align them with right sides facing and the raw edges matching up. Pin the fabrics together.
- Sew the pieces together along the curved edge. Leave the straight edge free for turning the piece right side out later.
- Turn the spike right side out through the opening, then define the tip with a chopstick or similar turning tool. Repeat this 5 more times so you have 6 spikes total.

- The side spikes are basted to the head just like in the original pattern, but the placement is a little different. Take two of your spikes and align them above the **side dart** on the **HEAD FRONT (A)**. Place one after the other. Then take one more spike and place it right next to the



upper dart seam, on the side near the center seam. Repeat this on the other side so you have two spikes on each side, and two on top.

- Flip the spikes inward and baste them to the edge of the fabric, just like in the original instructions.



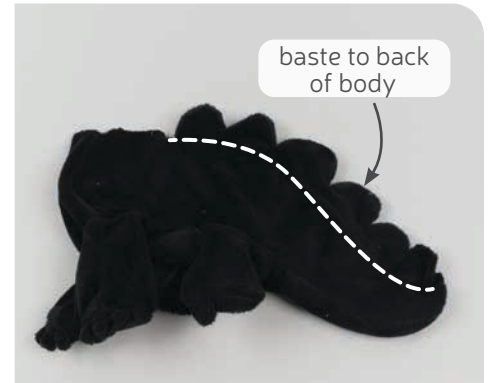
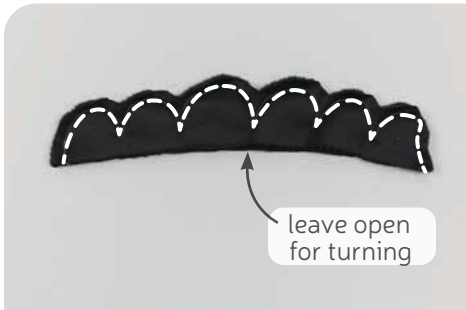
Refer to **steps 13-14** from the original **WYVERN & DRAGON PLUSH PATTERN** to sew and attach the **HEAD BACK**. Stop before you reach the **INNER LEGS** (step 15).

sew desu ne?

| WWW.CHOLYKNIGHT.COM |



The following step 7 is the same as **steps 24-26** from the original pattern but uses the new **BODY SPIKE** piece (T-H).



7. SEW & BASTE THE BODY SPIKES

- Grab your **BODY SPIKE** pieces (T-H). Align them with right sides facing and the raw edges matching up. Pin the fabrics together, then sew the pieces along the rounded edge. Leave the long, slightly curved edge free for turning the piece right side out.
- Trim the excess seam allowance at any tight corners and curves, then turn the spikes right side out.
- Baste the spikes to the back edge of your plush following the *spike placement guides* found on the paper pattern for the **BODY** (E2).



Refer to **steps 15-16**, then **33-49** from the original **WYVERN & DRAGON PLUSH PATTERN** to sew the full **BODY** and attach the **HEAD**. Stop before you reach the **HORNS** (step 50). See below for a brief overview.

8. SEW THE BODY & ATTACH THE HEAD

- Steps 15-16:** Sew the **INNER LEGS** (F) to the **BELLY** (G2).
- Steps 33-39:** Sew the **BELLY** (G2) to the **BODY** (E2), then sew up the back.
- Step 40-43:** Sew and baste the **CLAWS** (I), then attach the **FOOT BOTTOMS** (J).
- Step 44-47:** Flip and stuff the body.
- Step 48-49:** Attach the head.
- Up next are the **HORNS** (T-L), which use a different piece than the original pattern.



sew desu ne?

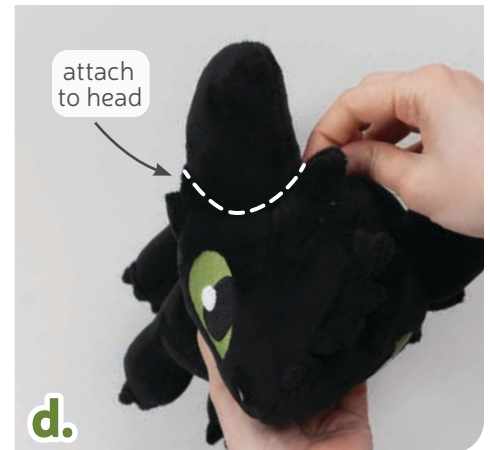
| WWW.CHOLYKNIGHT.COM |



The following step 9 is the same as **steps 50, then 53-55** from the original pattern but uses the new **HORN** pieces (T-L).

9. SEW & ATTACH THE HORNS

- a.** Grab your **HORN** pieces (T-L). Take two of them and align them with right sides facing and the raw edges matching up. Pin the fabrics together.
- b.** Sew the pieces together along the long curved edge. Leave the short straight edge free for turning the piece right side out.
- c.** Turn the horn right side out, then repeat with your other horn pieces for two total. Stuff and cinch the horns closed as in step 54 of the original instructions.
- d.** Take your cinched horn and align it onto the top of your plush right beside the top **HEAD SPIKE** (T-C). It helps to tilt the horn backward a little so it doesn't stick straight up. Ladder stitch the horn in place just like in step 55 of the original pattern.



sew desu ne?

| WWW.CHOLYKNIGHT.COM |



The following **steps 9-17** are new additions to the original **WYVERN & DRAGON PLUSH PATTERN**. So there's no need to refer back to the original pattern to finish Toothless.



leave opening for turning



trim seam allowance at corners

10. SEW THE TAIL FINS

- Grab your **TAIL FIN** pieces (T-N). Take two matching ones and align them with right sides facing and the raw edges matching up. Pin the fabrics together.
- If you haven't already, note the **opening for turning markings** found on the paper pattern for the tail fin. Transfer these markings to the edge of the fabrics you've pinned. Sew the pieces together all the way around, but skip over the opening for turning that you marked.
- Trim the excess seam allowance at the tight corners and curves of the piece. This will help reduce bulk in those areas so it turns more cleanly and the corners stay looking pointy. Repeat this with your other tail fin pieces so you have a matching pair.

11. FLIP & TOP STITCH THE TAIL FINS

- Turn the **TAIL FIN** pieces (T-N) right side out. Define the points with a chopstick or similar turning tool.
- If desired, you can also sew extra detail lines to the black tail fin to create the webbed look. Transfer over the **top stitching lines** from the paper pattern, then sew along the marked lines to complete.



turn right side out



sew top stitching lines

sew desu ne?

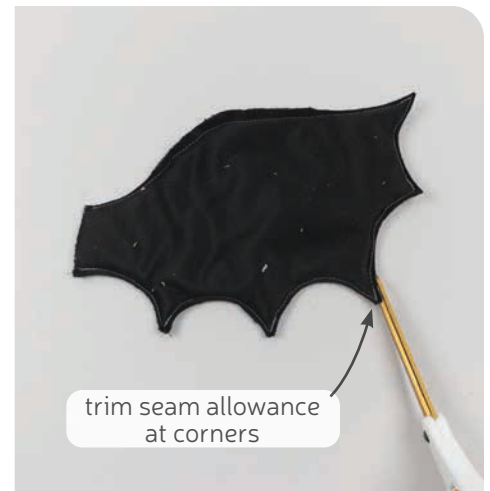
| WWW.CHOLYKNIGHT.COM |

12. ATTACH THE TAIL FINS

a. Take your plush so far and align the **TAIL FIN** (T-N) to the tail tip. Take the side with the **opening for turning** and tuck in the seam allowance. Align the tail tip onto one side of the tail. You can center it right on the belly seam. For character accuracy, you'll want to make sure the red tail tip is on Toothless' **LEFT** side. So it's shown here on the **right** from my perspective.



b. Ladder stitch the tail fin to the side of the tail, going around both sides. Repeat this with both tail fins on each side of the tail.



13. SEW THE WINGS

- Grab your **WING** pieces (T-K). Take two and align them with right sides facing and the raw edges matching up. Pin the fabrics together.
- Sew the pieces together along the long pointed edges. Leave the straight edge free for turning the piece right side out later.
- Trim the excess seam allowance at the tips of the wing. This will reduce bulk so the tips stay looking pointy when it's turned right side out.

sew desu ne?

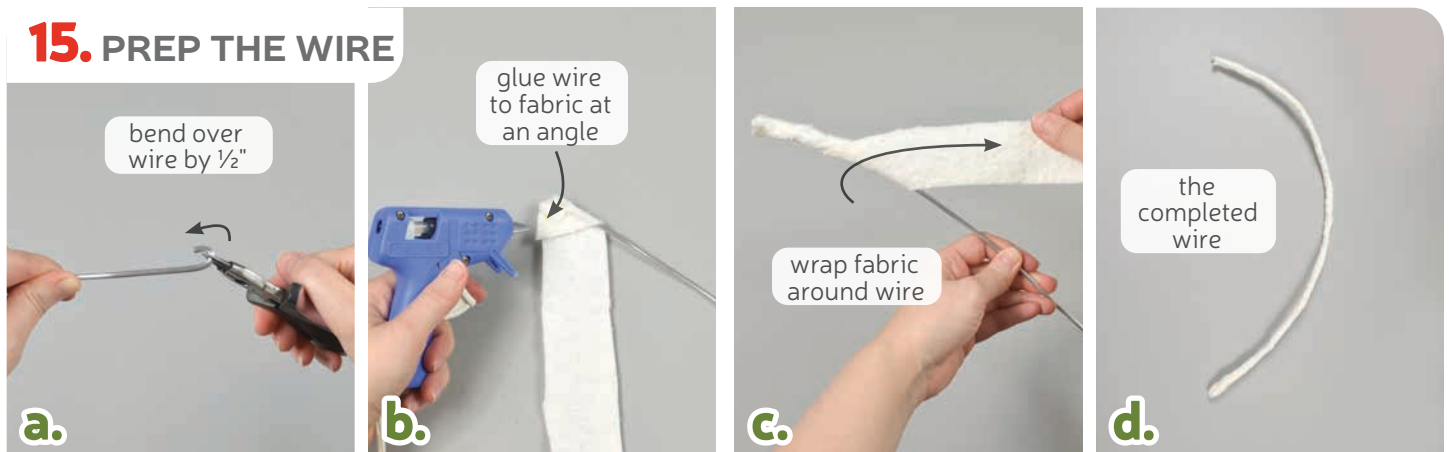
| WWW.CHOLYKNIGHT.COM |



14. TURN & TOPSTITCH THE WINGS

- Turn the **WINGS** (T-K) right side out and define the points with a chopstick or similar turning tool.
- Grab the wing by the opening and tuck in the seam allowance at the opening for turning. Fold under the fabric by about $\frac{1}{4}$ ".
- Now topstitch the wings. This will create the webbed look and also create a channel for holding the wire. Transfer the **top stitching lines** from the paper pattern and sew along the lines. One long line along the top edge creates the wire channel, and the curved lines below it create the webbing. Repeat this for both wings for a mirrored pair.

15. PREP THE WIRE



- Take this time to prep your wire for installing. Grab your wire, your jewelry pliers, your hot glue gun, and the strip of scrap fabric. Begin by bending over the ends of the wire with the pliers to eliminate the sharp ends. Bend the wire onto itself by about $\frac{1}{2}$ " on both ends.
- Next, use the hot glue to wrap the fabric around the wire. Begin with a dollop of glue on the end of the fabric. Then press the wire into the glue so the strip is at an angle as shown. Fold the ends of the fabric over the end of the wire. **WARNING:** the fabric will get hot from the glue.
- From there, cover sections of the fabric in glue, then carefully wrap it around the wire. Keep the fabric strip at an angle so it wraps down the length of the wire.
- Continue wrapping the wire until it's entirely covered. Then fold over the ends of the fabric and secure them with more glue as necessary.

sew desu ne?

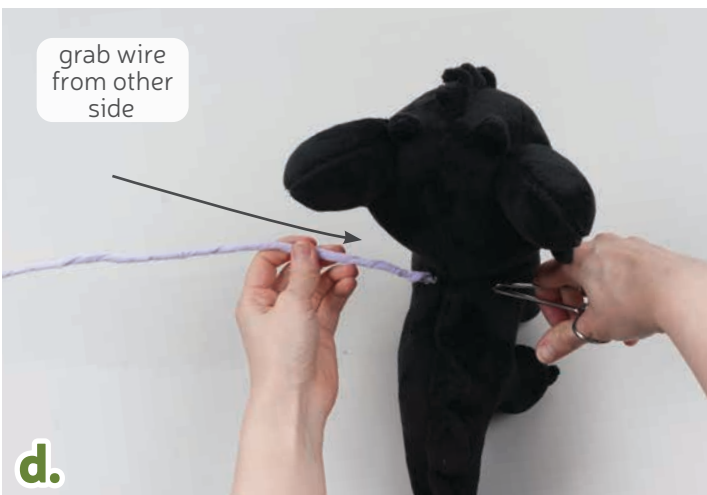
| WWW.CHOLYKNIGHT.COM |

16. INSERT THE WIRE



- a. To insert the wire, you'll need to make a small cut into Toothless' body. Start by marking the **placement guide**. This is about $\frac{3}{8}$ " down from the neck seam and $\frac{3}{8}$ " away from the center back seam. Make a small mark with some chalk or a disappearing fabric marker. Repeat this on both sides.
- b. Using the tip of your sharpest, smallest scissors, poke a small hole into the **wing placement guides** you marked on each side.
- c. Use these holes to insert your wire through the body. If you have hemostats it makes the process much easier. Insert the hemostats through both holes, in one hole and out the other. If the hemostats don't fit, you can cut the hole larger, but only 1-2 millimeters. The fabric will quickly spread out from even the smallest cut.

→ *If you cut a hole that's too big, you can cinch it closed again with a gathering stitch.*



- d. Grab your wrapped wire from the other side of the body. Use your hemostats to pull the wire through both sides.
- e. Pull the wire through so it's even on both sides.

sew desu ne?

| WWW.CHOLYKNIGHT.COM |



17. ATTACH THE WINGS

- Slide the **WINGS** onto the wire using the channels you stitched in step 14.
- Align the wings so they're flush against the side of the body. Align the folded edge of the wing so it's parallel with the center back seam. Ladder stitch the folded edge of the wing to the body of your plush.
- Go around to the other side so you've ladder stitched all the way around. Repeat for both wings.



CONGRATS!
This completes your plush! Now go on an adventure!

sew desu ne?

| WWW.CHOLYKNIGHT.COM |

TEST SQUARE
2"

measure this square to
be sure you've printed
at the proper
proportions

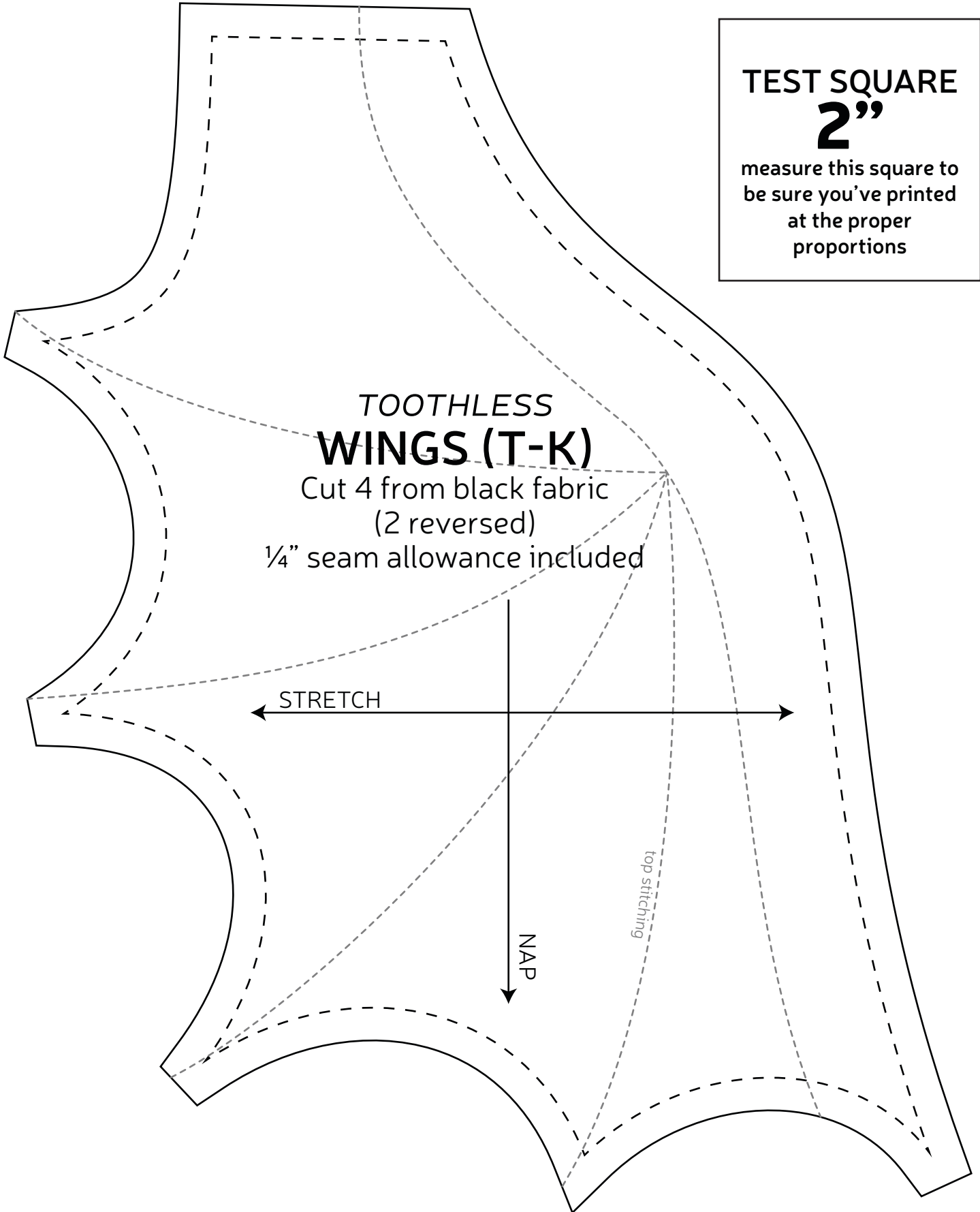
TOOTHLESS
WINGS (T-K)

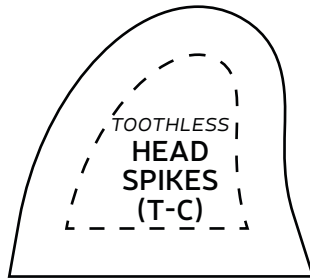
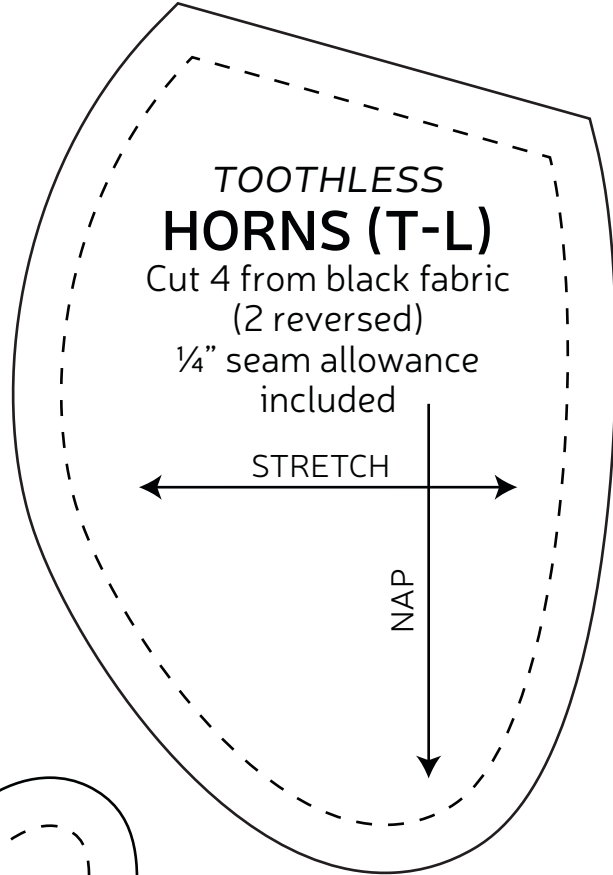
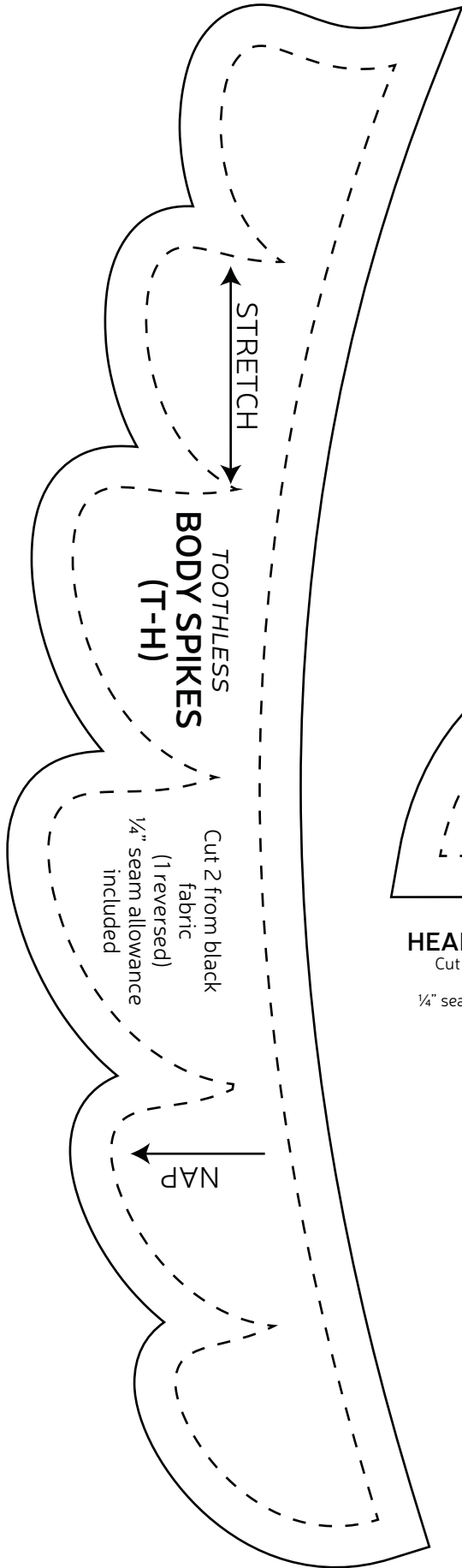
Cut 4 from black fabric
(2 reversed)
1/4" seam allowance included

← STRETCH →

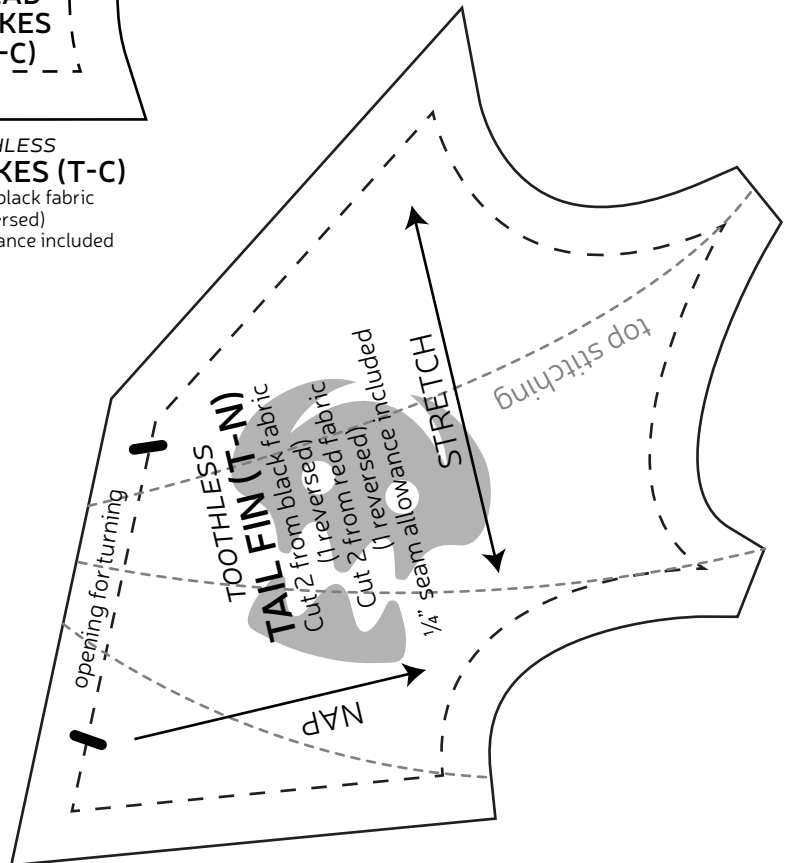
NAP ↓

top stitching

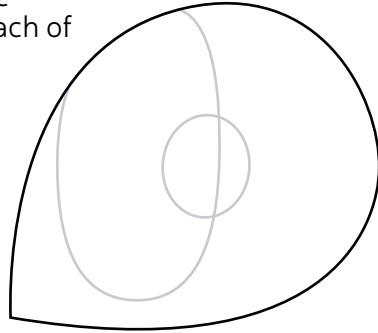
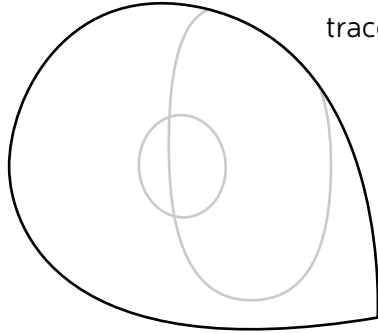




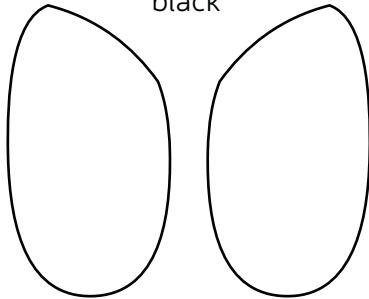
TOOTHLESS HEAD SPIKES (T-C)
Cut 12 from black fabric (6 reversed)
1/4" seam allowance included



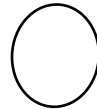
**TOOTHLESS
EYE**
applique
trace/cut 1 each of
green



**TOOTHLESS
PUPIL**
applique
trace/cut 1 each of
black



**TOOTHLESS
EYE SHINE**
applique
trace/cut 2
of white



**TOOTHLESS
NOSTRILS**
applique
trace/cut 1 each
of gray



**TOOTHLESS
TAIL SKULL**
applique
trace/cut 2
each of white

