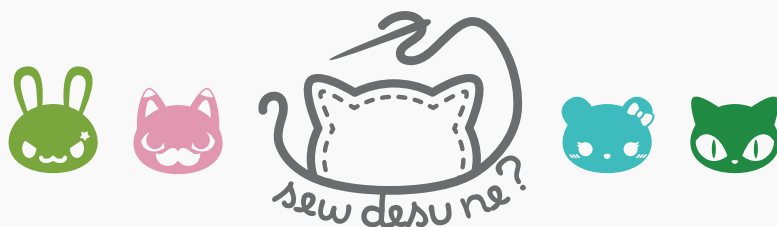


SHAYMIN

plush



a free sewing pattern by



SHAYMIN PLUSH

Fans of Pokémon should hopefully recognize this adorable hedgehog-inspired character! Shaymin is a grass type Pokémon that's distinctive for its adorable shrub-like appearance and covered in beautiful flowers. This pattern will take you through making this chubby version with stumpy arms and feet and a cute smile. You can use faux fur to recreate the fluffy look of the hedgehog spines. Alternatively, you can mimic the shrub look by layering leaf-shaped pieces onto the top using a smoother fabric.

MAKES:

ONE PLUSH:

About 7½" long, 5" wide, and 5½" (without leaf layers) or 6½" tall (with leaf layers).

DIFFICULTY:



The hardest part of this plush is likely all the hand sewing required. If you use smooth fabric with the leaf layers, that can take an especially long time. If you use faux fur it goes a little faster, but you still have to attach the side leaves and flowers.

SKILLS USED:

- Fusible web applique
- Curved sewing
- Ladder stitch
- Sewing small pieces
- Basting
- Darts



sew desu ne?

| WWW.CHOLYKNIGHT.COM |

MATERIALS & TOOLS:

- ¼ yd. (or 22" x 9") of white fabric for main body
- ¼ yd. (or 16" x 9") of pink fabric for flowers
- ⅛ yd (or 19" x 5") of green fabric for side leaves
- **OPTIONAL:** ⅓ yd. (or 24" x 12") of scrap fluffy fabric for leaf and flower structure (see page 18 or 22 for how it's used)
- **CHOOSE 1:**
 - FOR LEAF LAYERS (SMOOTH FABRIC):** ⅓ yd. of leaf green fabric
 - FOR FAUX FUR BODY BACK:** ¼ yd. (or 11" x 9") of leaf green faux fur fabric
- sewing thread to match main fabric and applique fabrics
- poly-fil stuffing
- basic sewing tools (sewing machine, scissors, iron, needles, pins, fabric marker, seam ripper)
- **APPLIQUE SUPPLIES:**
 - 2" x 2" of green fabric for eyes
 - 3" x 3" of black fabric for pupils, mouth, and nose
 - 2" x 2" of white fabric for eye shines
 - 2" x 2" of dark pink fabric for inner flower markings
 - 3" x 3" of yellow fabric for grass spots
 - 5" x 5" of light or heavy duty fusible web

FUSIBLE WEB:

- Fusible web adhesive is a sheet of adhesive with a paper backing.
- **Not to be confused with fusible interfacing**, which is adhesive attached to a fabric/fiber backing.
- Some common brands are **Pellon & HeatnBond**
- In countries outside the US, it may also be known as **bondaweb**
- It comes in **light** and **heavy duty** varieties. Lightweight strength is meant for applique you intend to sew later. Heavy duty versions are for a no-sew bond. If you try to sew them later your machine might have trouble penetrating the glue.



APPLIQUE FABRICS:

- Good applique fabrics include **flannel, cotton, felt, minky, and fleece**.
- Flannel and cotton are best for detailed applique with a lot of layers because they're thinner. Meanwhile felt, minky, and fleece are better for simpler applique like body markings.
- **Flannel** is used in the example instructions (page 8).



sew desu ne?

| WWW.CHOLYKNIGHT.COM |

fabric comparison:



SUGGESTED BODY FABRICS:

MINKY OR FLEECE

Medium weight, plush fabrics with about 20%-30% stretch along the crosswise grain work best for this project. The varieties shown to the left are some good options and names to look for. Try to avoid heavyweight versions of fleece that are intended for outdoor apparel or they may cause trouble for the detailed areas.

You can also use non-stretch fabrics (such as felt), but be aware that the curves will be more difficult to sew and the result will look different. The plush will become more elongated and the edges will look sharper.

10" of minky
stretches to 13"
= 30% stretch

MINKY

VS.

FELT



sew desu ne?

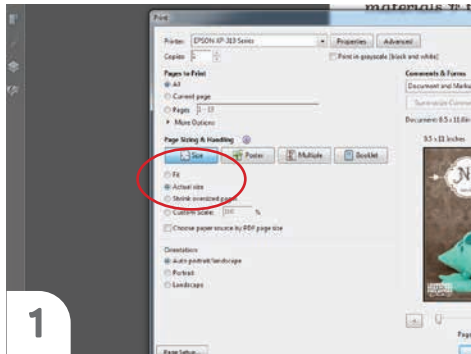
| WWW.CHOLYKNIGHT.COM |

PRINTING THE PATTERN:

Set your computer to print **PAGES 24-28.**

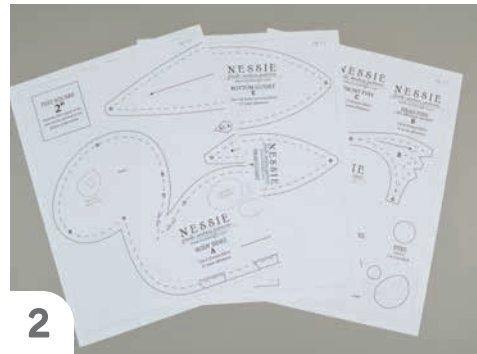
If you're unfamiliar with printing and assembling a .pdf pattern, read the steps to follow.

For the best results, use a .pdf reader like **ADOBE READER**. That's what is shown here and will give you the most control over the settings.



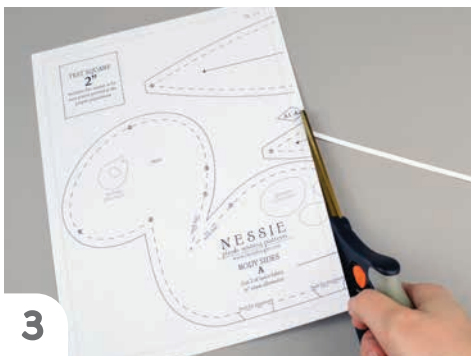
1

At the print dialog box, check the box that says print at "Actual Size" or 100%. Any other selection (such as "Fit to page") will distort the pattern so it's slightly larger or smaller and we don't want that.



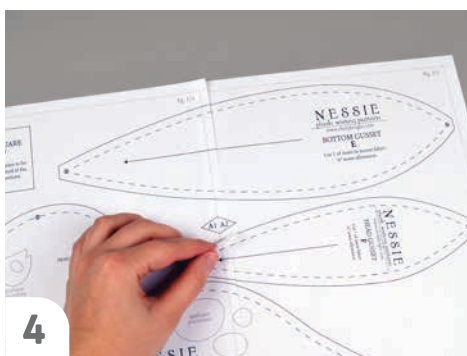
2

Print the pages needed for the file. You might have one or more. Either way, be sure you have the full collection by noting the page numbers in the corner.



3

It's likely your printer will have a margin that ensures your image doesn't print to the very edge. Assembly will be easier if you trim off this blank margin edge. This will give you pages that overlap slightly during assembly. If you trim across the gray outline boxes, this will give you pages that don't overlap but rather butt against each other.



4

To line up the pattern pages, match up the corresponding diamond shapes. Each diamond will have a letter, so it's simply a matter of matching A1 to A2, B3 to B4 and so on. The faint gray lines indicate the border of every page, you should be able to line those up as well. When the diamond goes together, tape it in place.

If you have many pages, it's easier to tape up the pages into rows first. Then tape the rows together into a full block.



5

You can trace the patterns onto a different paper, or you can also just cut them straight from the printer paper -- be sure that each piece is fully taped together along the joins so they don't fall apart when you cut them.

sew desu ne?

| WWW.CHOLYKNIGHT.COM |

CUTTING THE FABRIC:



1 Place pattern on the fabric, and make sure the stretch line matches the stretch of the fabric. The nap line should go in the direction of the fur.

2 Pin the pattern in place, use pattern weights, or trace the outline of the pattern with a washable marker.

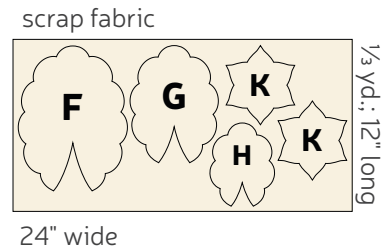
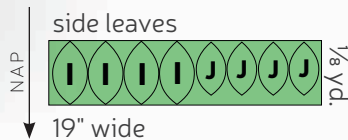
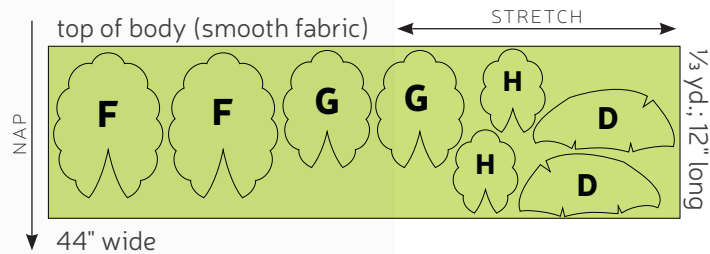
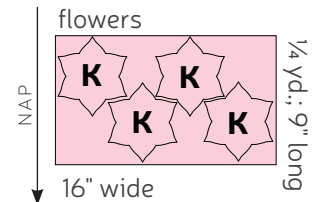
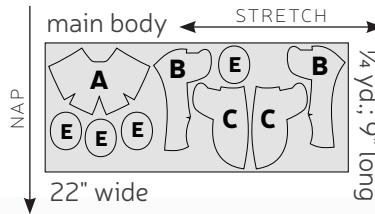
3 Using the paper as a template, cut out the fabric. Cut the required amount according to the pattern.

4 For all fur fabrics, shake the excess fuzz away.

CUTTING LAYOUT: SMOOTH FABRIC BODY TOP

Template checklist:

- A - Head front
- B - Body side
- C - Belly
- D - Body top
- E - Back feet
- F - Bottom leaf layer
- G - Middle leaf layer
- H - Top leaf layer
- I - Large side leaf
- J - Small side leaf
- K - Flower



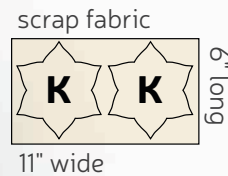
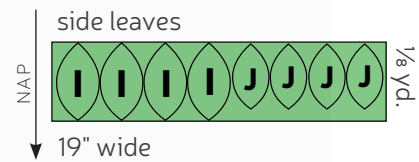
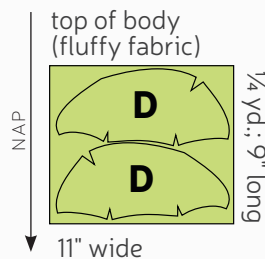
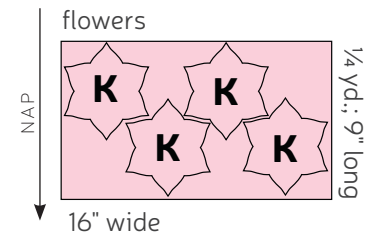
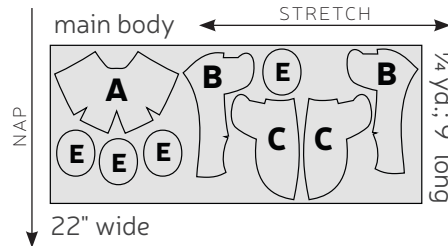
sew desu ne?

| WWW.CHOLYKNIGHT.COM |

CUTTING LAYOUT: FAUX FUR FABRIC BODY TOP

Template checklist:

- A - Head front
- B - Body side
- C - Belly
- D - Body top
- E - Back feet
- I - Large side leaf
- J - Small side leaf
- K - Flower



BEFORE YOU BEGIN:

- Briefly read the project instructions so you know what to expect.
- If desired, mark the cut fabric pieces with the markings and symbols from the pattern. Or wait until the applicable step before transferring.
- Note that a 1/4" seam allowance is used for the project unless otherwise mentioned. The seam allowance is included in the pattern templates.

sew desu ne?

| WWW.CHOLYKNIGHT.COM |

1. FUSE THE EYE APPLIQUE



- a.** Grab your fusible web and applique templates. Trace the pieces for the **eyes, nose, and mouth**. You should have:
- **eyes** (2, green)
 - **eye shines** (2, white)
 - **pupils/eyelids** (2, black)
 - **nose** (1, black)
 - **mouth** (1, black)
- b.** Fuse the bumpy (adhesive) side of the fusible web onto the applique fabrics.
- c.** Cut out your applique pieces and grab your **HEAD FRONT** piece (A). Grab the **eye** applique piece. Set your paper pattern on top of the head front piece. Align the applique piece on top where the placement markings are. Next, carefully pull the paper pattern away while holding the applique piece in place.



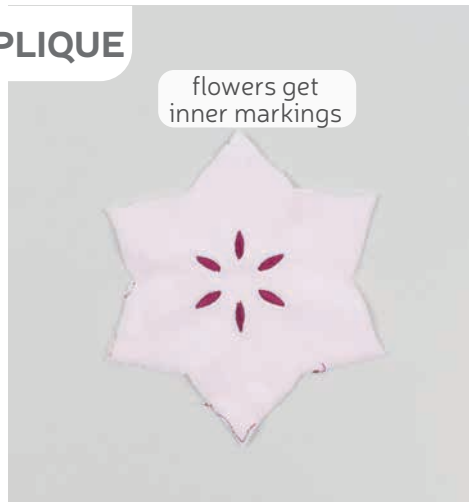
- d.** Fuse the applique pieces with your iron. Use a press cloth, such as a scrap piece of cotton. This will help protect any polyester or fuzzy fabrics from melting or scorching.
- e.** Continue with the smaller eye pieces, like the **eyelid/pupil**. Fuse them the same way using the paper pattern and photos as a guide.
- f.** Lastly add the smallest pieces, the **eye shines**. Layer them on top of the current eye pieces to complete. Then add the **nose** and **mouth** to complete the full face.

sew desu ne?

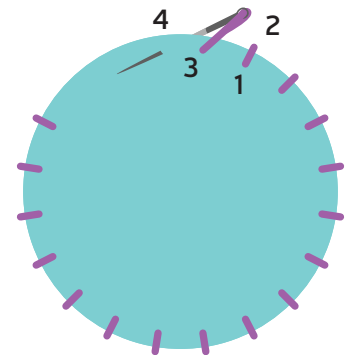
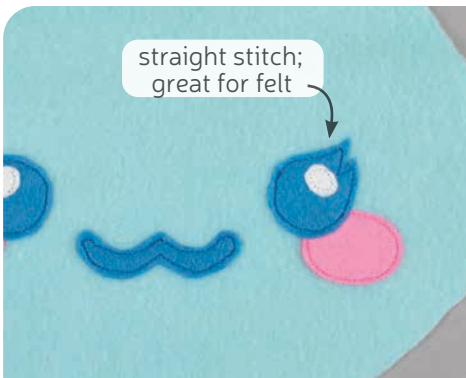
| WWW.CHOLYKNIGHT.COM |

2. FUSE THE OTHER APPLIQUE

- Take this time to also add the applique to your other pieces.
- The **FLOWERS** (K) will also need the little **inner flower markings**. Each flower should get 6 pieces.
- If you're using the **LEAF LAYER PIECES** (F, G, & H), these get the **large** and **small grass spots**. They're placed randomly along the edge of the leaf layers, but you can also check the paper pattern for placement markings that look like the samples.



- This should complete the applique. If you used heavy duty fusible web, you can keep the pieces fused without sewing. If you used lighter fusible web, you'll want to stitch the pieces in place. A zigzag stitch with matching thread works nicely around the edges. For hand sewing options, see below.



3. OTHER APPLIQUE OPTIONS

- Other good options for applique include a straight stitch, which involves sewing around the edge of the applique pieces with a straight stitch using matching thread -- about 1/8" in from the edge.
- You can also applique by hand; I prefer a whipstitch. Thread a hand-sewing needle with some matching thread and knot it. Bring the thread up from the back of the project; about 1/8" in from the edge of the applique shape. Bring it down perpendicular from the curve, just outside of the applique shape. This completes one stitch.
- For the next stitch, bring the needle back up about 1/8" away from the previous stitch and 1/8" in from the edge just as in the first stitch. Once again, bring it down just outside the applique shape. Continue this way until you've sewn around the shape.

sew desu ne?

| WWW.CHOLYKNIGHT.COM |



4. SEW THE SIDE DARTS

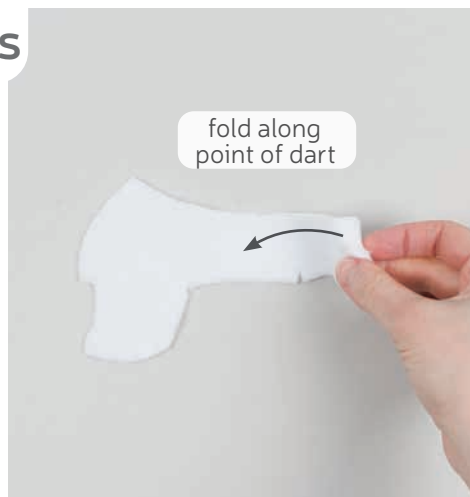
- Grab your **HEAD FRONT** piece (A). This piece has several **darts** all around the outer edges, but we're only going to sew the **side darts**. These are the small wedge shapes marked on the paper pattern. The side darts are marked with **point 3**. To sew the **dart**, start by folding the fabric along the point of the dart and match up the slanted edges so right sides are facing and **point 3** matches up.
- Sew from the opening of the **dart** down into the fold of the fabric. Try to blend your stitching into the fold for a smooth transition and a rounder finish to the plush.
- Repeat this with both of your side **darts**. Leave the top and bottom darts open for a bit later.

DARTS:

A wedge-shaped gap found in a pattern. When sewn in fabric, it creates a tuck in the fabric and develops a 3D shape. The diagonal sides of the wedge are the **LEGS**; these are matched up and sewn to the **POINT** of the dart.

5. SEW THE BODY DARTS

- Grab your **BODY SIDE** pieces (B). These pieces also have a small **dart** along the edge, also marked on the paper pattern.
- Sew this **dart** similar to the previous one. Fold the fabric along the point of the **dart** so the slanted edges match up and right sides are facing. Sew from the opening of the **dart** down into the fold of the fabric. Try to blend your stitching into the fold for a rounder finish.



Repeat this with your other body side piece so you have two sewn **darts** total.

sew desu ne?

| WWW.CHOLYKNIGHT.COM |



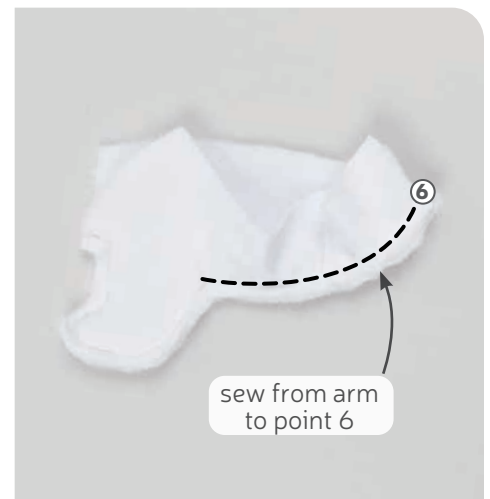
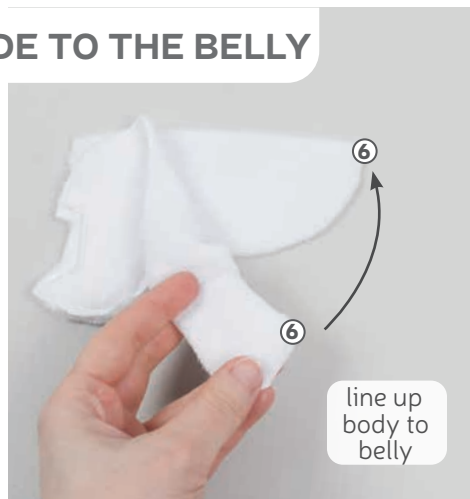
6. SEW THE ARMS



- Grab your **BELLY** piece (C) as well as your **BODY SIDE** piece (B). These pieces will join together along the edge with the **front arm**. That section is marked on the paper pattern, but you can also line up the **numbered points**. Look for **points 3 and 6**.
- We'll start by just sewing the arms. Take your body piece and match it up with the belly so the arm sections align. This should match up **point 3** at the little corner in front of the arm. Make sure right sides are facing and pin the fabrics together.
- Sew the arms by starting at **point 3**, go down to the arm and pivot, then sew around the arm.

7. ATTACH THE BODY SIDE TO THE BELLY

- Next, line up the next section of the **BODY** (B) and **BELLY** (C), going from the arm to **point 6**. Line up the edge of the body around the curve of the belly up to **point 6**. Make sure right sides are facing and pin the fabrics together around the curve.
- Sew the body to the belly from the arm to **point 6**. Repeat steps 6-7 with your remaining body and belly pieces so you have a matching pair.



sew desu ne?

| WWW.CHOLYKNIGHT.COM |

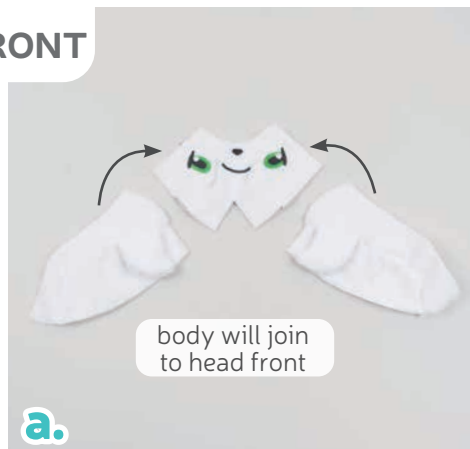
8. TURN THE ARM

- Take your joined **BODY** and **BELLY** pieces (B & C) and clip the seam allowance at the corner on each side of the **arm**. This will help the piece turn more cleanly.
- Turn the arm right side out and now the body and belly will make an even edge that we'll join to the head front next.



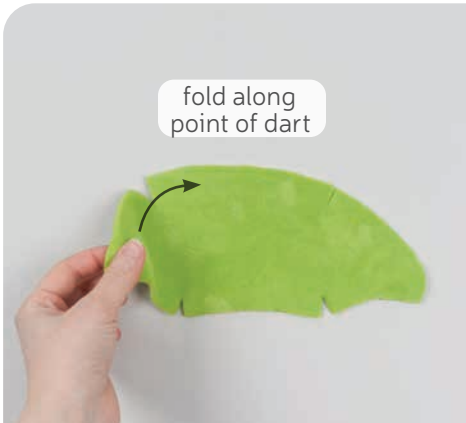
9. ATTACH THE HEAD FRONT

- Grab your **HEAD FRONT** piece from before (A) as well as your sewn **BODY** and **BELLY** pieces (B & C). These pieces will attach along the inner edges as shown, but you can also look for the **numbered points** for help with alignment. Look for **points 2, 3, & 4**.
- Take your body and align it with the head so right sides are facing and **points 2, 3, and 4** match up. Pin the fabrics together.
- Sew the body to the head from **point 2**, through **3**, and ending at **point 4**.
- Repeat this with your other body piece on the other side of the head so both pieces are joined.



sew desu ne?

| WWW.CHOLYKNIGHT.COM |



10. SEW THE BODY TOP DARTS

- Grab your **BODY TOP** pieces (D). These pieces also have several **darts**, just like the head front and body side. We'll sew them the same way, starting by folding the fabric along the point of the **dart** so right sides are facing and the slanted edges match up.
- Sew from the opening of the **dart** into the fold of the fabric. Try to blend your stitching into the fold for a smooth transition and a rounder finish to the plush. Repeat this with all of the **darts** all around the body top piece. There should be 4 **darts** total: 2 along the top, and 2 along the bottom. Then repeat this all over again with your second body top piece for 8 **darts** total.

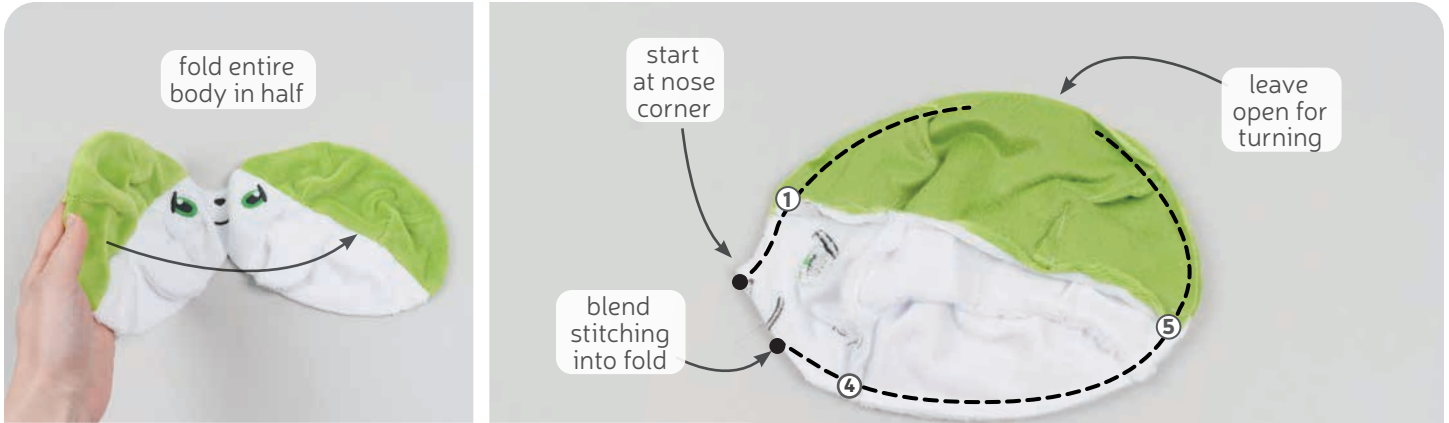


11. ATTACH THE BODY TOP

- Grab your body so far as well as your **BODY TOP** pieces (D). These pieces will join together along the inner edges as shown, but you can also look for the **numbered points** for help with alignment. Look for **points 1, 2, and 5**.
- Flip over your body top so now it's right sides facing with the body. Match up **point 1** at the front corner and **point 5** at the back. Line up the raw edges and pin the fabrics together from **point 1**, through **2**, and ending at **point 5**.
- Sew the body top to the body from **point 1 to 5**. Repeat this with your other body top piece so you have both sides.

sew desu ne?

| WWW.CHOLYKNIGHT.COM |



12. SEW AROUND THE TOP AND BELLY

- Grab your body so far and fold it entirely in half along the middle of the face. This is marked with **filled circle markings** on the paper pattern if you need help. This should match up each half of the body. The **BODY TOP** pieces should face each other, and the **BODY** pieces should face each other with right sides together. The **numbered points** should also line up, **point 1** at the forehead and **point 5** at the back seam. Pin the fabrics together all the way around.
- If you haven't already, note the **opening for turning markings** found on the paper pattern for the body top. Transfer these markings onto the edge of the fabrics you've just pinned. Next we'll sew entirely around the body, but leave the **opening for turning** that you marked. Start at the tip of the nose at the **circle marking** and go up and around the body. When you reach the chin at **point 4**, start blending your stitching into the fold of the fabric like previous darts. End at the other **circle marking**.



13. TURN THE BODY

- Before you turn the body right side out, make clips into the seam allowance at the curve above the nose.
- Turn the body right side out through the opening you left. Define the nose with a chopstick or similar turning tool.

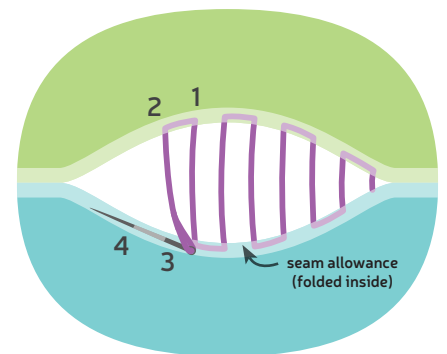
sew desu ne?

| WWW.CHOLYKNIGHT.COM |



14. STUFF THE BODY

- Begin stuffing the plush. Start by filling up the arms using your **opening for turning**. Fill up the arms firmly from the toes all the way to the top.
 - **NOTE:** *the arms will stick straight out right now and not look right. But don't worry, we'll hand stitch them to point downward later, and they'll look much better.*
- Next, fill up the nose firmly. Be sure to use small bits of stuffing so the nose stays looking full and doesn't flatten over time.
- Lastly, fill up the rest of the face and body. Work your way to the opening of the plush until it's completely full.



15. SEW THE BODY CLOSED

- Once the body is stuffed, make sure the seam allowances in the opening are tucked inside and prepare to ladder stitch it closed. Thread a hand-sewing needle and knot it at the end. Insert the needle from the inside of the opening and out of the plush near one edge of the opening. This will leave the knot inside the plush.
- Ladder stitch the head closed. Take a $\frac{1}{8}$ " stitch into the fold of one side of the opening, then go across and take another. Keep stitching down the opening until you reach the end.

sew desu ne?

| WWW.CHOLYKNIGHT.COM |

16. TRIM THE THREADS

- When you're finished, stitch a knot into the end of the seam. Then insert the needle near the finished knot. Bring the needle out about 1-2" away and pull it through.
- Pull the thread taut while snipping the thread. The excess thread should sink back inside the plush -- all hidden!



17. FOLD AND SECURE THE ARMS



- To make sure the **ARMS** are pointed down, they're folded and stitched in place. You'll find arm **stitching guides** found on the paper pattern for the **BELLY** (C). Transfer these **guides** onto your fabric along the arm using a disappearing fabric marker.
- Grab your hand sewing needle and thread it. Sew along the marked lines using a ladder stitch going back and forth across. It helps to use a long basting stitch for the first pass.
- As you tighten the basting threads, this stitch will do the hard work of pulling in the arm. The arm should now be pointing down.
- Next go across the marked **stitching guides** again, but this time with tinier, neater stitches to secure the arm in place. Repeat this for both arms so they're both pointing straight down when complete.



sew desu ne?

| WWW.CHOLYKNIGHT.COM |

18. SEW THE BACK FEET



- Grab your **BACK FOOT** pieces (E). Take two of them and align them with right sides facing and the raw edges matching up.
- Sew the pieces together all the way around the shape.
- To turn the foot, cut a short slit through one layer of the fabric only, centered near the back. You can also refer to the paper pattern for a **cutting guide**.
- Turn the feet right side out through the opening that you've cut. Repeat this for both feet so you have a matching pair. Stuff the feet lightly with stuffing.

19. ATTACH THE BACK FEET

- Take your stuffed **FEET** (E) and align them onto the back end of your plush. Make sure the cut end is facing the plush. Here it's placed close to the outer belly seam and about $\frac{1}{2}$ " away from the center belly seam. You can also refer to the **stitching guides** on the paper pattern for help with placement, and adjust if you prefer a different look.



- Ladder stitch the foot to the body around the cut you made following the **stitching guides**. Repeat this for both feet for a matching pair.

sew desu ne?

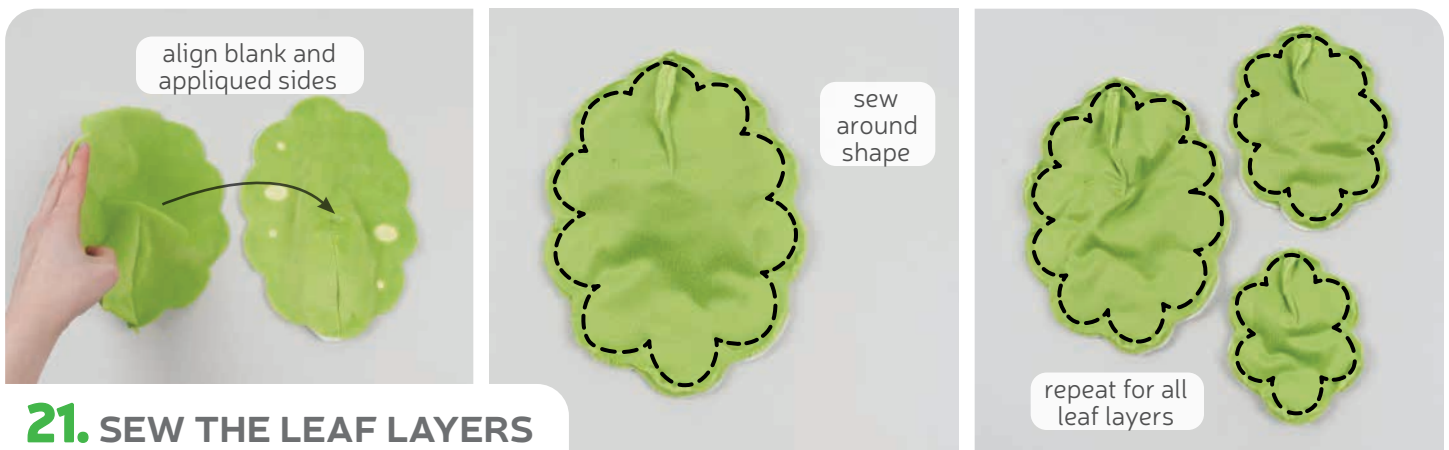
| WWW.CHOLYKNIGHT.COM |

If you have **LEAF LAYERS (F, G, & H)**, continue next with step 20.
If you don't have these, skip ahead to step 25 for making the **SIDE LEAVES**.



20. SEW THE LEAF LAYER DARTS

- If you have **LEAF LAYER** pieces (F, G, & H), grab them now. Also grab any corresponding **scrap fabric** for the inner structure. This will give the pieces more thickness and not be as thin or floppy. The samples use **cotton quilt batting**, but **fleece** or **felt** would also have a similar result. Take one of your leaf layers that has applique. Layer the scrap fabric onto the wrong side of the fabric. Treat them as one layer for future steps.
- The leaf layers have **darts** similar to previous pieces. Sew these **darts** similar to the others, starting by folding the fabric along the point of the **dart** so right sides are facing and the slanted edges match up.
- Try to blend your stitching into the fold for a smooth transition and a rounder finish. If you're using scrap fabric for structure, it should be secured in the seam as if it's part of the original fabric. Repeat this with all of your leaf layer pieces, which should be 6 **darts** total.



21. SEW THE LEAF LAYERS

- Grab one of your **LEAF LAYERS** with applique and without applique. Align them with right sides facing and the raw edges matching up. Pin the fabrics together.
- Sew the pieces together around the scalloped edges.
- Repeat this with all of your leaf layers and you should have 3 total.

sew desu ne?

| WWW.CHOLYKNIGHT.COM |



22. TRIM & TURN THE LEAF LAYERS

- Trim the excess seam allowance around the tight corners and curves of the **LEAF LAYERS** (F, G, & H). Trimming the inner corners will help increase flexibility in those areas so the piece turns more cleanly.
- To turn the leaf layers right side out, cut a slit into the blank layer only. This is the layer without any grass spot applique. Cut it vertically along the center, but you can also use the **cutting guide** found on the paper pattern for help.
- Turn the leaf layer right side out through the opening that you've cut, then define the shapes with a chopstick or similar turning tool. Repeat this with all of your leaf layers for 3 total.



23. ATTACH THE LARGE LEAF LAYER

- Grab your **LARGE LEAF LAYER** (F) and layer it on top of your plush so far. Make sure the cut end is facing the plush, and it should cup nicely over the curve of the **BODY TOP** (D). Center it on top of the body so the **dart** seam is centered along the back.
- Make sure the leaf layer is perfectly centered by viewing it from all sides: the front, back, and sides. Hold the leaf layer in place by sticking pins down through the layer and into the plush.
- Now you can ladder stitch the leaf layer in place. Grab a hand sewing needle and thread it, then ladder stitch the leaf layer to the body about 1/4" in from the edge. You can also use the **stitching guide** found on the paper pattern. Follow it exactly or adjust if you prefer a different look. Attach the leaf layer going all the way around.
You can remove the pins when the leaf layer is completely attached.

sew desu ne?

| WWW.CHOLYKNIGHT.COM |

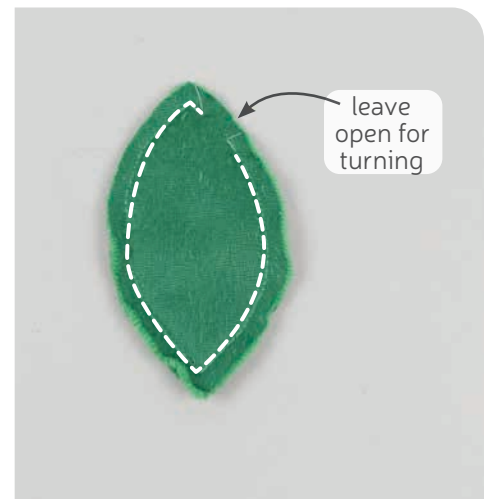
24. ATTACH THE MEDIUM & SMALL LEAF LAYER

- Grab your **MEDIUM LEAF LAYER** (G) and align it over the **LARGE LEAF LAYER** (F) in the same manner. Make sure the cut side is facing down, then pin it in place.
- Ladder stitch the second layer in place similar to the first, about 1/4" in from the edge; or refer to the **stitching guides** found on the paper pattern. Remove the pins when complete.
- Lastly, grab your **SMALL LEAF LAYER** (H) and align it over the **MEDIUM LAYER** (G). Make sure the cut side is facing down and pin it in place.
- Ladder stitch the third layer in place similar to the second, about 1" in from the edge, or refer to the **stitching guides** found on the paper pattern. Remove the pins when complete.



25. SEW THE SIDE LEAVES

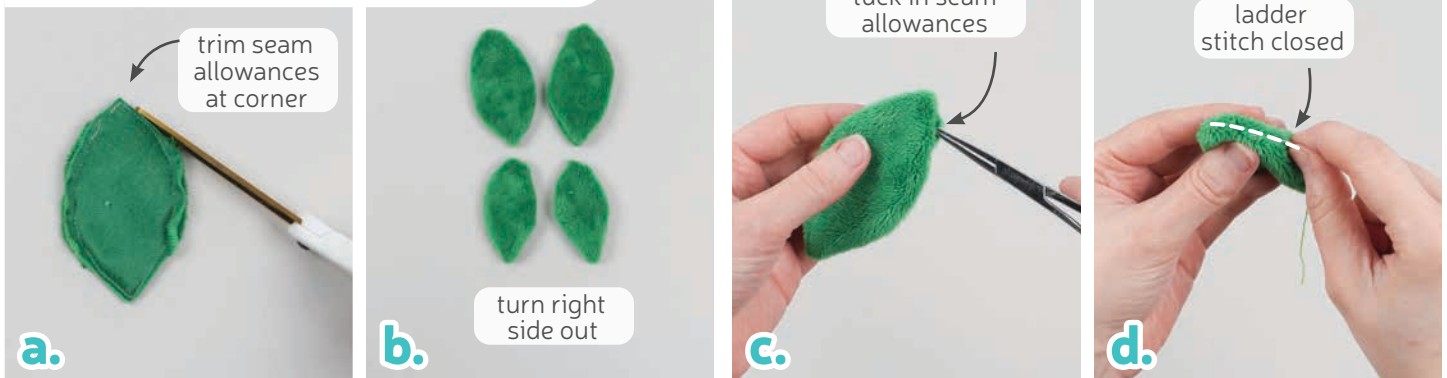
- Grab your **SIDE LEAF** pieces (I & J). Take two matching ones and align them with right sides facing and the raw edges matching up.
- If you haven't already, note the **opening for turning markings** found on the paper pattern for the leaves. Sew entirely around the leaves, but leave the **opening for turning** at the top corner for turning the piece right side out. Repeat this with all of your leaf pieces so you have 4 total: 2 large and 2 small.



sew desu ne?

| WWW.CHOLYKNIGHT.COM |

26. TRIM & TURN THE LEAVES



- Trim the excess seam allowance at the corners of the leaves. This will reduce bulk in those areas so the tips look pointy when the leaves are turned.
- Turn the leaves right side out through the **opening for turning** that you left.
- Tuck in the seam allowances in the leaves so you have folded edges at the opening.
- Ladder stitch the leaves closed. Repeat this for all your leaves for 4 total.

27. ATTACH THE LARGE LEAVES

- Take your **LARGE SIDE LEAVES** (I) and align one corner onto the side of your plush. Here it's placed on the **BODY TOP** section (C). It's about $\frac{1}{2}$ " behind the body top **dart** and about $\frac{3}{4}$ " above the seam at the body side, pointing backward. But you can also refer to the **placement guide** on the paper pattern for extra help.



- Grab your hand sewing needle and ladder stitch the leaf to the body at the corner. Repeat this on the other side with your other large leaf. Doing one piece at a time is helpful to make the finished plush look symmetrical.

sew desu ne?

| WWW.CHOLYKNIGHT.COM |

28. ATTACH THE SMALLER LEAVES

- Grab your **SMALL SIDE LEAVES** (J) and align them onto the sides of the plush as well. Here one corner is layered on top of the **LARGE LEAF**. The leaf itself is pointing downward. You can also look for the **placement guide** on the paper pattern for more help.
- Ladder stitch the corner of the leaf on top of the previous leaf. Then repeat this on the other side so both small leaves are attached.

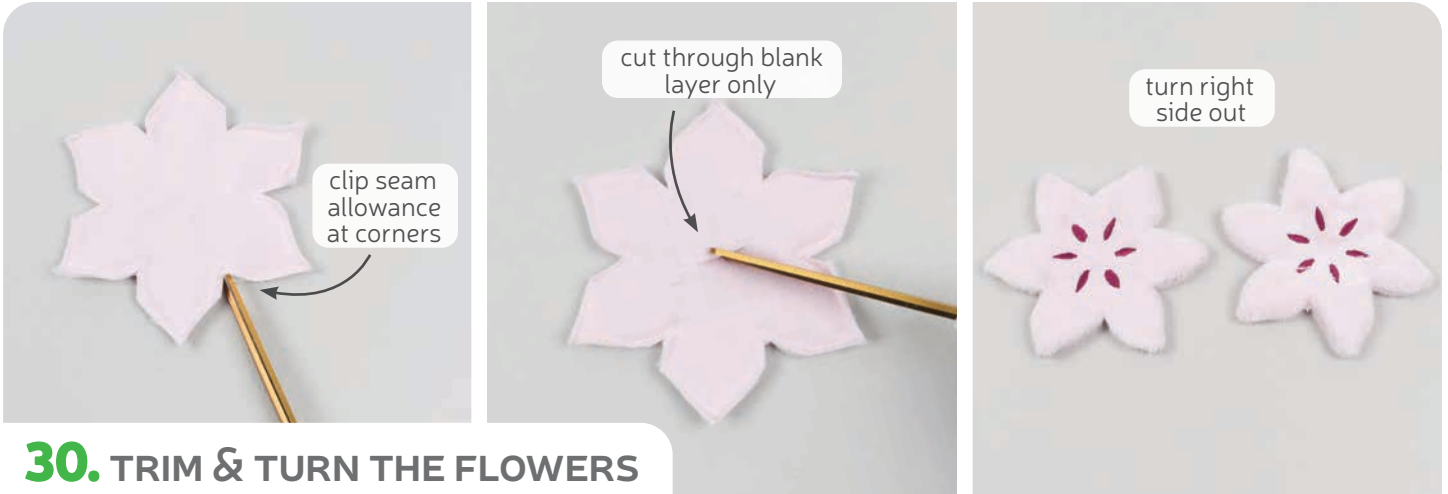


29. SEW THE FLOWERS

- Grab your **FLOWER** pieces (K). Take one blank one and one with the markings applied. Align them with right sides facing and the raw edges matching up.
- If you would like to use **scrap fabric** for more structure, take this piece and layer it over your applied flower piece. The scrap fabric should be facing the wrong side of the flower fabric.
- Sew the flower pieces together all the way around the shape, going through all the layers. Repeat this with your other flower pieces so you have two sewn flowers total.

sew desu ne?

| WWW.CHOLYKNIGHT.COM |



30. TRIM & TURN THE FLOWERS

- Trim the excess seam allowance at the inner and outer corners of the **FLOWER**. Trim the outer corners to reduce bulk so the flower tips stay looking pointy. Trim the inner corners to increase flexibility so the piece turns more cleanly.
- To turn the flower right side out, cut a short slit into the blank piece only (the piece without applique). Cut the slit centered along the middle of the flower, but you can also refer to the paper pattern for a **cutting guide**.
- Turn the flower right side out through the opening you cut. Define the points with a chopstick or similar turning tool. Repeat this with your other flower piece so you have two total.

31. ATTACH THE FLOWERS

- Grab your finished **FLOWERS** and align them onto the sides of your plush. Make sure the cut side is facing the plush and the appliqued side is facing out. Align the flower centered onto the corners of the **LEAVES**. Pin the flowers in place by sticking pins down into the center of the flower and into the plush.



You may want to pin both flowers before attaching to be sure they look symmetrical.

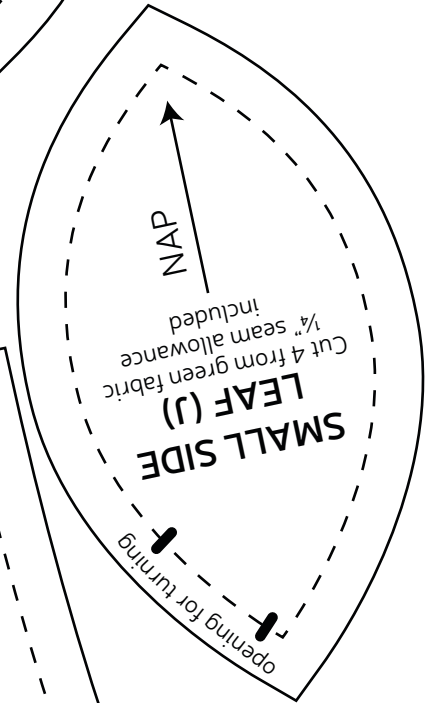
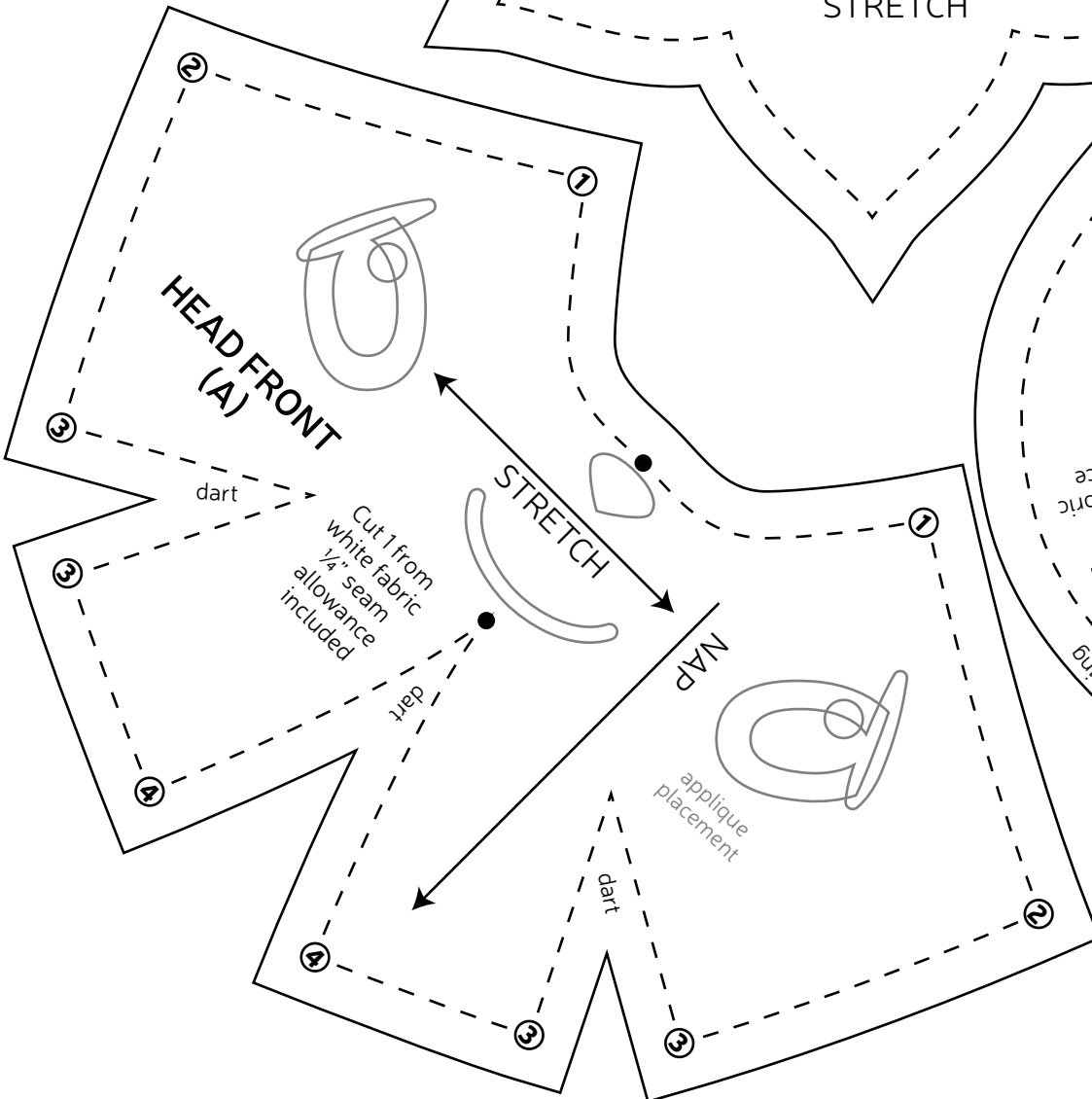
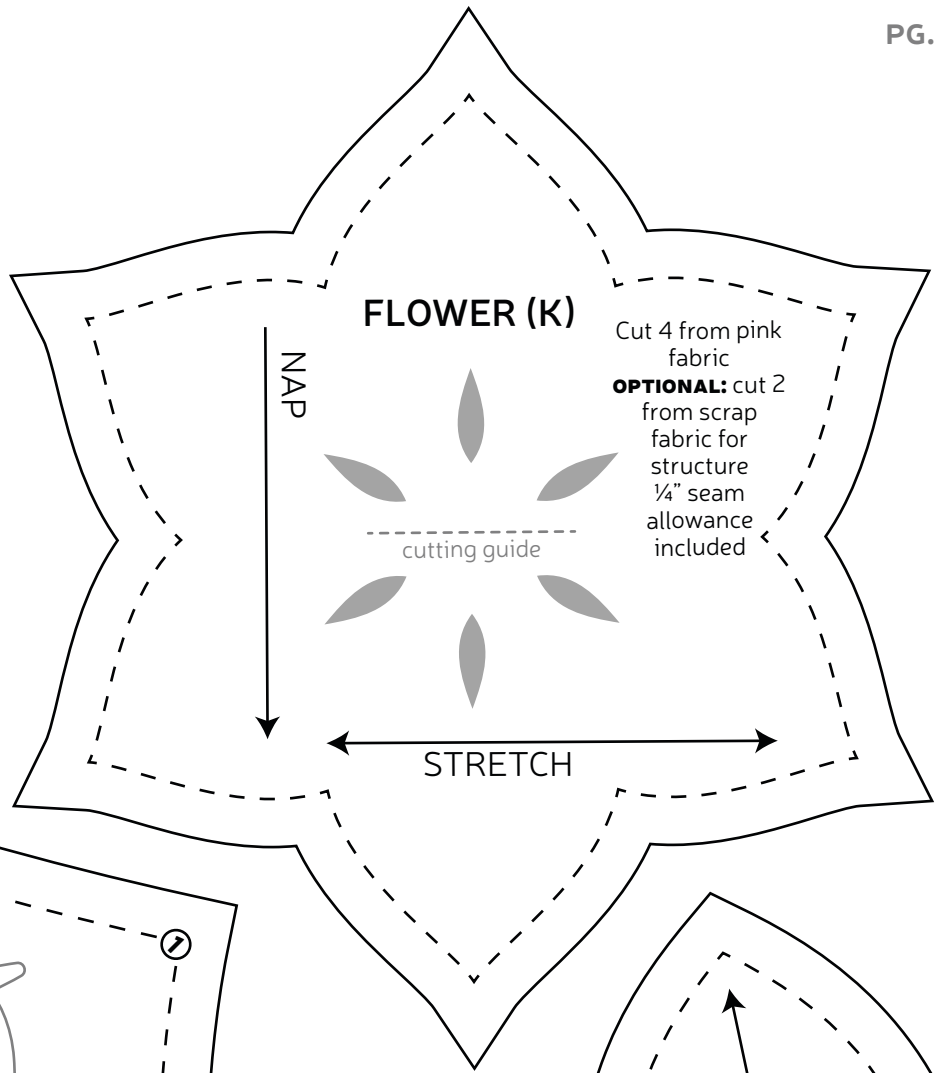
- Ladder stitch the flowers in place by stitching around the cut you made earlier, going around in a circle. If you want your flowers to look symmetrical, it helps to baste both flowers first to check the placement. If you like the basted placement of both flowers, go back and secure them with tinier, neater stitches to hold them.

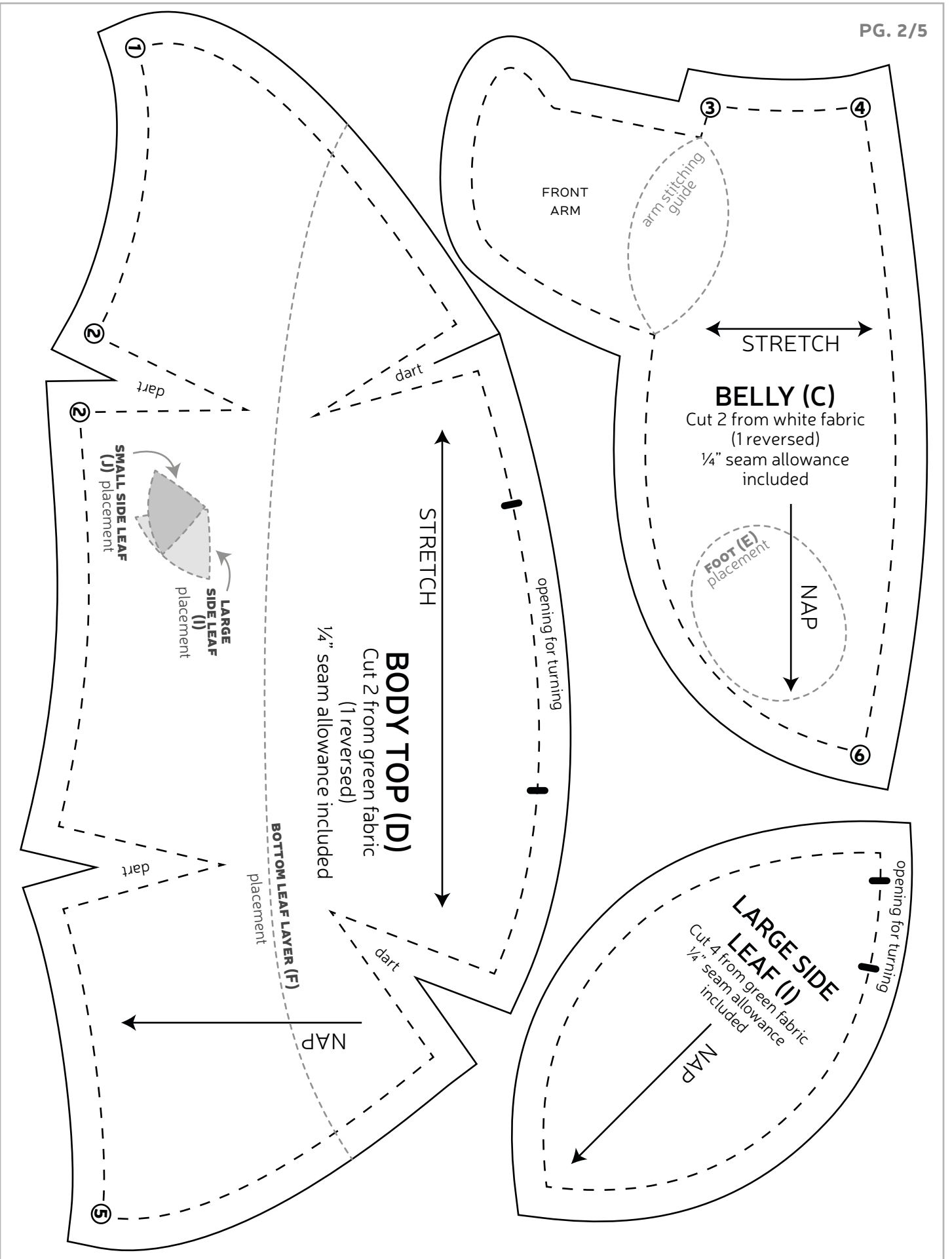
sew desu ne?

| WWW.CHOLYKNIGHT.COM |

TEST SQUARE 2"

measure this square to
be sure you've printed
at the proper
proportions





Shaymin Plush

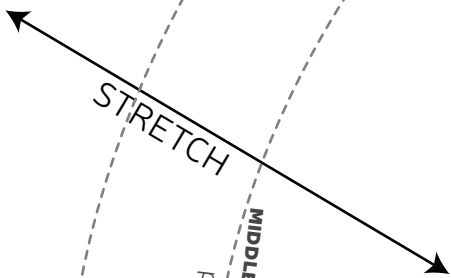
P A T T E R N
WWW.CHOLYKNIGHT.COM

A1 A2

BOTTOM (LARGE) LEAF (F)

Cut 2 from grass green fabric

OPTIONAL: cut 1 of scrap fabric for structure
1/4" seam allowance included



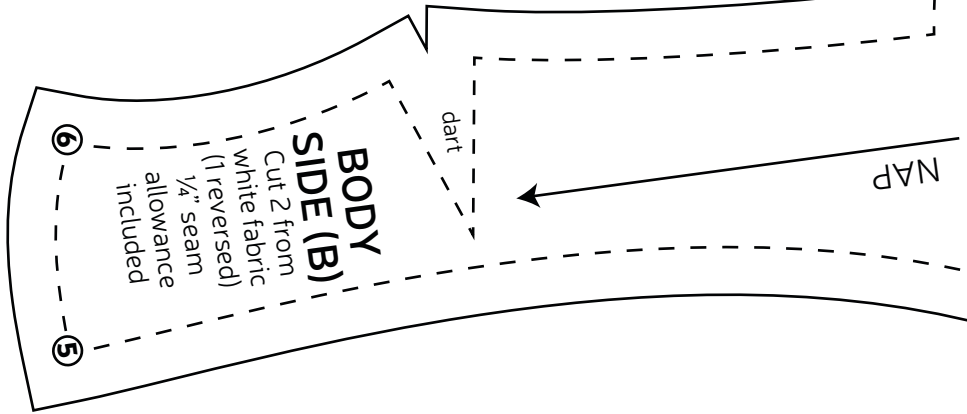
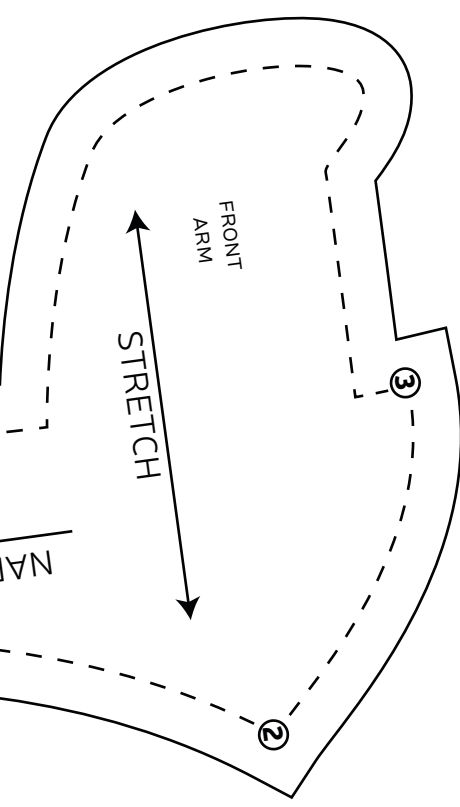
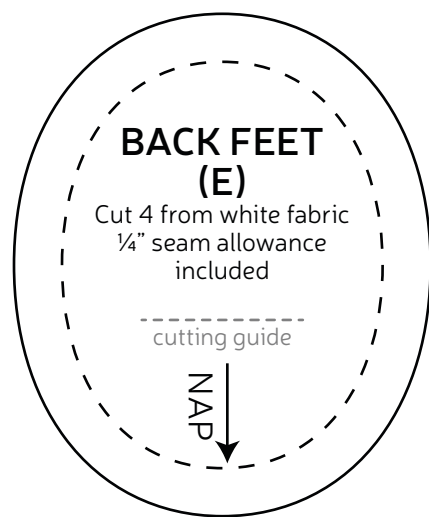
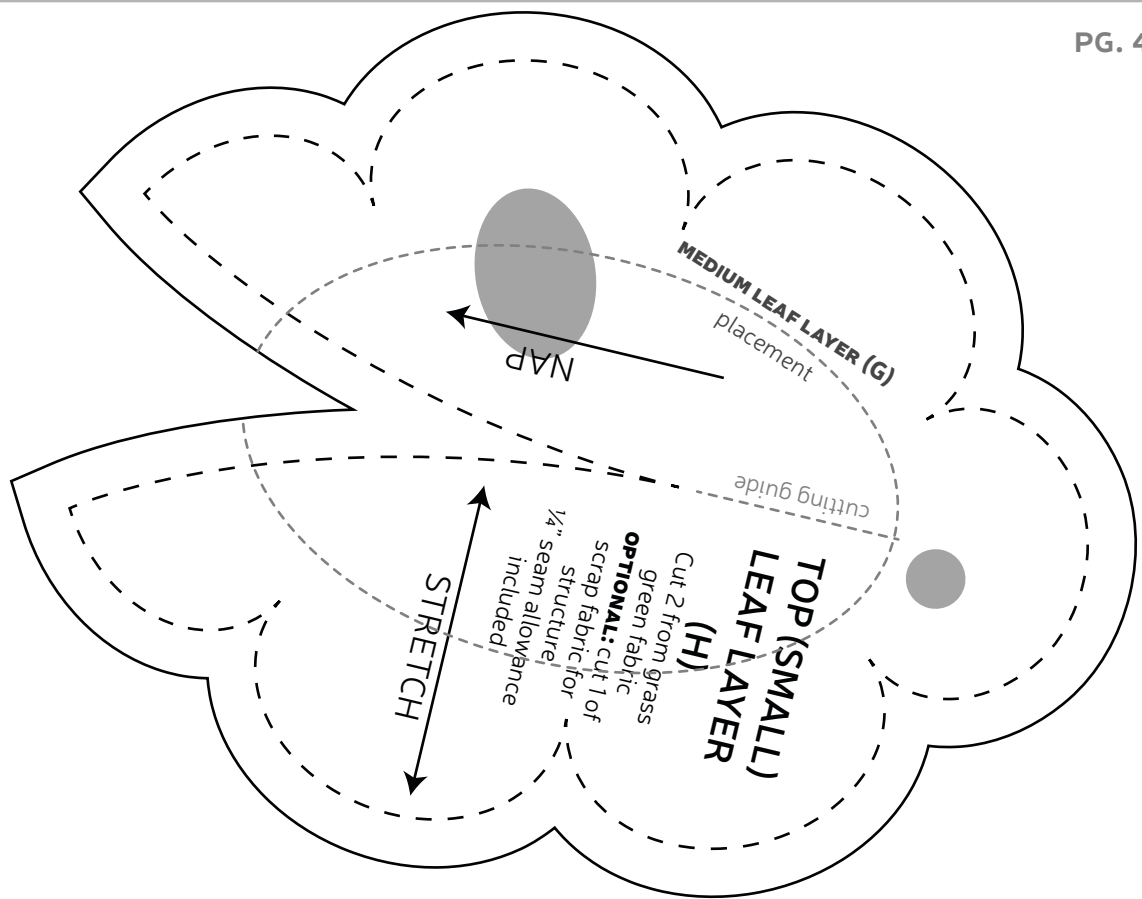
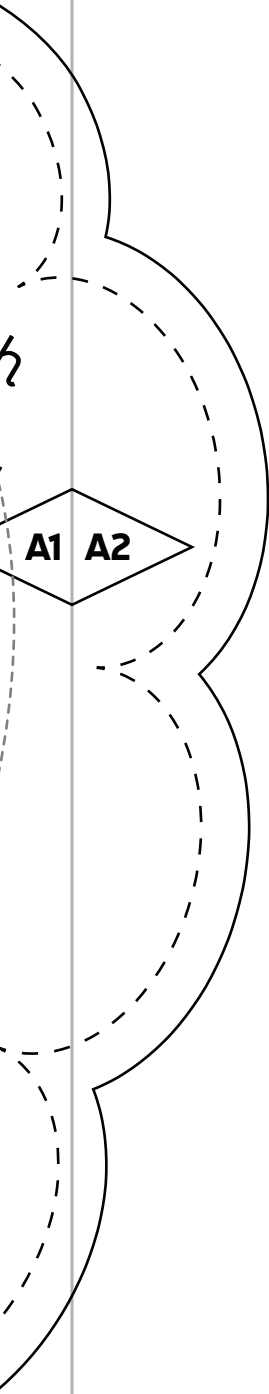
MIDDLE LEAF LAYER (G)
placement

dart

NAP

BODY TOP (D)
placement

cutting guide



MIDDLE (MEDIUM) LEAF LAYER (G)

Cut 2 from grass green fabric
OPTIONAL: cut 1 of scrap fabric for structure
¼" seam allowance included

Shaymin Plush
P A T T E R N
WWW.CHOLYKNIGHT.COM

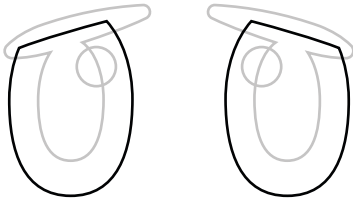
SMALL LEAF LAYER (H)
placement

LARGE LEAF LAYER (F)
placement

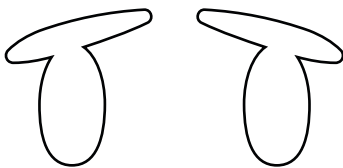
STRETCH

NAP

EYE
applique
trace & cut 1 each
from green



PUPILS/EYELIDS
applique
trace & cut 1 each
from black



EYE SHINES
applique
trace & cut 2
from white



NOSE
applique
trace & cut 1
from black



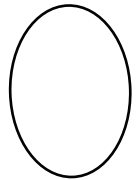
MOUTH
applique
trace & cut 1
from black



INNER FLOWER
applique
trace & cut 5
from dark pink



LARGE GRASS SPOTS
applique
trace & cut 4
from yellow



SMALL GRASS SPOTS
applique
trace & cut 4
from yellow

