

PONYTA

farm mammals plush

SEWING PATTERN HACK



a free sewing pattern by

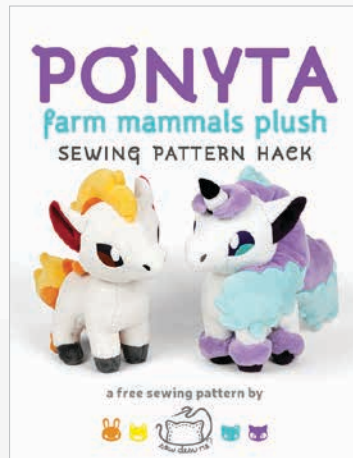


PONYTA PATTERN HACK

This pattern hack is meant to work alongside my **FARM MAMMALS PLUSH SEWING PATTERN**. It is a set of extra templates that add additional features to the base head and body of the original **PONY** pattern. With those together you can make the impressive **KANTO** and **GALAR** versions of Ponyta! Add gorgeous flames for the Kanto Ponyta or a beautiful long fluffy mane, tail, leg fluffs, and unicorn horn for Galar Ponyta. In these instructions you'll find a guide for sewing the ears, mane, and tail and how they're incorporated into the original design.



+



=



KANTO PONYTA



NEW: mane & tail flames

NEW: leg flames

uses PONY body base

GALAR PONYTA

NEW: unicorn horn

NEW: leg fluffs

NEW: puffy mane & tail



sew desu ne?

| WWW.CHOLYKNIGHT.COM |

DIFFICULTY:

This version of the pattern has about the same difficulty as the original. The hardest parts are likely all the curves in the body and the time needed to add all the hand sewn details.

MAKES:

ONE PLUSH: About 9½" tall from bottom of feet to top of head, 4½" wide from each side of head, and 9½" long from nose to back of body.

SKILLS USED:

- ladder stitch
- fusible web applique
- sewing curves (straight to curved pieces, inner to outer curves, outer to outer curves, etc.)
- darts
- matching notches & points
- basting
- gathering; gathering stitch

MATERIALS & TOOLS:

- sewing thread to match main fabric and applique fabrics
- poly-fil stuffing
- basic sewing tools (sewing machine, scissors, iron, needles, pins, fabric marker, seam ripper)
- 6" x 8" of scrap fabric for poly pellet pouch
- poly pellets
- spoon or funnel for filling poly pellets

**KANTO**

- ¼ yd. of cream fabric for main body
- ⅛ yd. (or 13" x 4") of gray fabric for hooves
- ⅛ yd. (or 8" x 3") of dark red fabric for inner ears
- ¼ yd. (or 17" x 9") of orange fabric for flames
- ¼ yd. (or 15" x 9") of yellow fabric for flames
- 4" x 4" of black applique fabric for eyes, nostrils, and mouth
- 2" x 2" of brown applique fabric for eye highlights
- 2" x 2" of white applique fabric for eye shines
- 5" x 5" of light or heavy duty fusible web

sew desu ne?

| WWW.CHOLYKNIGHT.COM |



GALARIAN

- ¼ yd. of white fabric for main body
- ⅛ yd. (or 21" x 4") of dark purple fabric for hooves and inner ears
- ⅛ yd. (or 5" x 4") of black fabric for horn
- ⅓ yd. of lilac fabric for mane and tail
- ¼ yd. of aqua fabric for mane and tail
- 4" x 4" of dark purple applique fabric for eyes
- 2" x 2" of aqua applique fabric for eye highlights
- 3" x 3" of white applique fabric for eye shines and horn stripe
- 3" x 3" of black applique fabric for nostrils and mouth
- 7" x 7" of light or heavy duty fusible web

FUSIBLE WEB:

- Fusible web adhesive is a sheet of adhesive with a paper backing.
Not to be confused with fusible interfacing, which is adhesive attached to a fabric/fiber backing.
- Some common brands are **Pellon** & **HeatnBond**
- In countries outside the US, it may also be known as **bondaweb**
- It comes in **light** and **heavy duty** varieties. Lightweight strength is meant for applique you intend to sew later. Heavy duty versions are for a no-sew bond. If you try to sew them later your machine might have trouble penetrating the glue.



lightweight fusible

APPLIQUE FABRICS:

- Good applique fabrics include **flannel**, **cotton**, **felt**, **minky**, and **fleece**.
- Flannel and cotton are best for detailed applique with a lot of layers because they're thinner. Meanwhile felt, minky, and fleece are better for simpler applique like body markings.
- **Flannel** is used in the example instructions (page 8).



sew desu ne?

| WWW.CHOLYKNIGHT.COM |

fabric comparison:



SUGGESTED MAIN FABRICS:

MINKY OR FLEECE

Medium weight, plush fabrics with about 20%-30% stretch along the crosswise grain work best for this project. The varieties shown to the left are some good options and names to look for. Try to avoid heavyweight versions of fleece that are intended for outdoor apparel or they may cause trouble for the detailed areas.

You can also use non-stretch fabrics (such as felt), but be aware that the curves will be more difficult to sew and the result will look different. The plush will become more elongated and the edges will look sharper.

10" of minky stretches to 13" = 30% stretch

MINKY VS. FELT



sew desu ne?

| WWW.CHOLYKNIGHT.COM |

FABRIC CUTTING GUIDE:

Follow the cutting guide below for what colors to cut from the pattern pieces from the **FARM MAMMALS PLUSH PATTERN**. Above are the original pieces and below are new pattern hack pieces. Follow the columns for either the Kanto or Galar style.

The new pieces have the same letter as the original, but a new prefix: **PK FOR KANTO PONYTA** OR **PG FOR GALAR PONYTA**. For example the **EAR (3)** has been changed to **P3 FOR PONYTA**.

LABEL	NAME	KANTO	GALAR
ORIGINAL PATTERN			
F1	HEAD FRONT	CREAM	WHITE
F2	FOREHEAD	CREAM	WHITE
F4	HEAD BACK	CREAM	WHITE
F5	BODY	CREAM	WHITE
F6	FRONT HOOF	DARK GRAY	DARK PURPLE
F7	BACK HOOF	DARK GRAY	DARK PURPLE
F8	BELLY	CREAM	WHITE
F9	FRONT INNER LEG	CREAM	WHITE
F10	BACK INNER LEG	CREAM	WHITE
F12	HOOF BOTTOM	DARK GRAY	DARK PURPLE
F13	MUZZLE	CREAM	WHITE
POUCH	POLY PELLET POUCH	SCRAP FABRIC	SCRAP FABRIC

KANTO			GALAR		
PATTERN HACK PIECES					
P3	EAR	CREAM & DARK RED	P3	EAR	WHITE & DARK PURPLE
PK11A	UPPER TAIL	YELLOW	PG11A	TAIL	LILAC
PK11B	LOWER TAIL	ORANGE	PG11B	TAIL TIP	AQUA
PK14A	UPPER MANE	YELLOW	PG11c	BOTTOM TAIL	AQUA
PK14B	LOWER MANE	ORANGE	PG14A	MANE	LILAC
PK15	BODY FLAMES	ORANGE	PG14B	UPPER TIP	AQUA
PK16	LEG FLAMES	ORANGE	PG14c	BACK TIP	AQUA
			PG14D	BOTTOM MANE	AQUA
			PG15	BANGS	LILAC
			PG16	LEG FLUFFS	LILAC
			PG17	HORN	BLACK

sew desu ne?

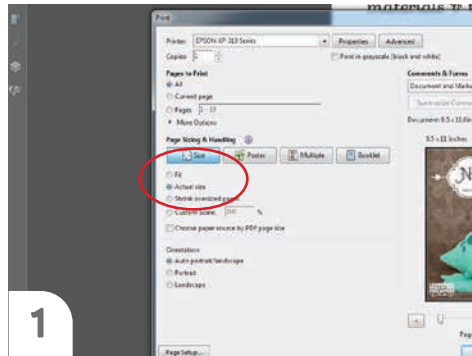
| WWW.CHOLYKNIGHT.COM |

PRINTING THE PATTERN:

Set your computer to print **PAGE 27-33.**

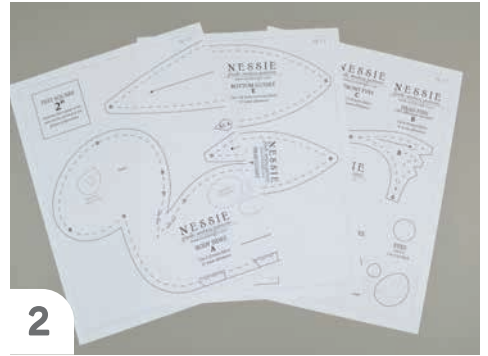
If you're unfamiliar with printing and assembling a .pdf pattern, read the steps to follow.

For the best results, use a .pdf reader like **ADOBE READER.** That's what is shown here and will give you the most control over the settings.



1

At the print dialog box, check the box that says print at "Actual Size" or 100%. Any other selection (such as "Fit to page") will distort the pattern so it's slightly larger or smaller and we don't want that.



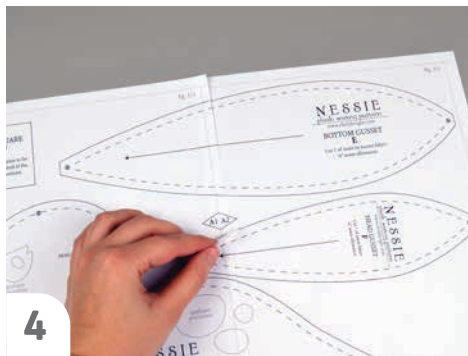
2

Print the pages needed for the file. You might have one or more. Either way, be sure you have the full collection by noting the page numbers in the corner.



3

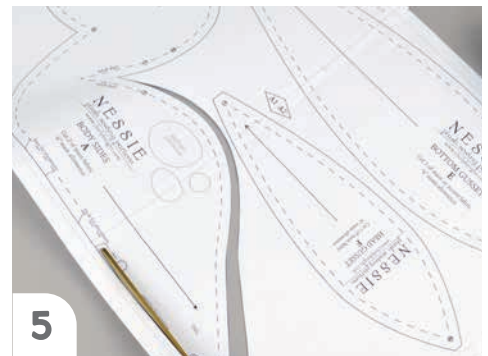
It's likely your printer will have a margin that ensures your image doesn't print to the very edge. Assembly will be easier if you trim off this blank margin edge. This will give you pages that overlap slightly during assembly. If you trim across the gray outline boxes, this will give you pages that don't overlap but rather butt against each other.



4

To line up the pattern pages, match up the corresponding diamond shapes. Each diamond will have a letter, so it's simply a matter of matching A1 to A2, B3 to B4 and so on. The faint gray lines indicate the border of every page, you should be able to line those up as well. When the diamond goes together, tape it in place.

If you have many pages, it's easier to tape up the pages into rows first. Then tape the rows together into a full block.



5

You can trace the patterns onto a different paper, or you can also just cut them straight from the printer paper -- be sure that each piece is fully taped together along the joins so they don't fall apart when you cut them.

sew desu ne?

| WWW.CHOLYKNIGHT.COM |

BEFORE YOU BEGIN:

- Briefly read the project instructions so you know what to expect.
- If desired, mark the cut fabric pieces with the markings and symbols from the pattern. Or wait until the applicable step before transferring.
- Note that a ¼" seam allowance is used throughout the project, which is included in the pattern templates.



Use the new applique templates on the **HEAD FRONT (F1)** to replace the eyes from the original **FARM MAMMALS PLUSH** sewing pattern.

1. FUSE THE EYE APPLIQUE



- Grab your fusible web and applique templates. Trace the pieces for the eyes. Here we're making the **GALAR** eyes, but the **KANTO** eyes have the same pieces but are shaped differently. You should have:
 - **eyes** (2, dark purple)
 - **eye highlights** (2, aqua)
 - **eye shines** (2, white)
- Fuse the bumpy (adhesive) side of the fusible web onto the applique fabrics.
- Cut out your applique pieces and grab your **HEAD FRONT** piece (F1). Grab the **eye** applique piece. Set your paper pattern on top of the head front piece. Align the applique piece on top where the placement markings are. Next, carefully pull the paper pattern away while holding the applique piece in place.

sew desu ne?

| WWW.CHOLYKNIGHT.COM |

2. BUILD THE EYE APPLIQUE



- Fuse the first applique layer with your iron. Use a press cloth, such as a scrap piece of cotton. This will help protect any polyester or fuzzy fabrics from melting or scorching.
- Add the **eye highlight** pieces next. Use the paper pattern and photos as a placement guide. Next add the **eye shines** to complete the eyes.

If you used heavy duty fusible web, you can keep the pieces fused without sewing, or you can sew them in place a number of ways. I've used a zigzag stitch here.

→ Refer to page 10 for some other applique options.

3. APPLIQUE THE MUZZLE & HORN

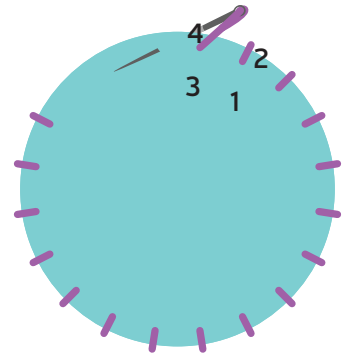
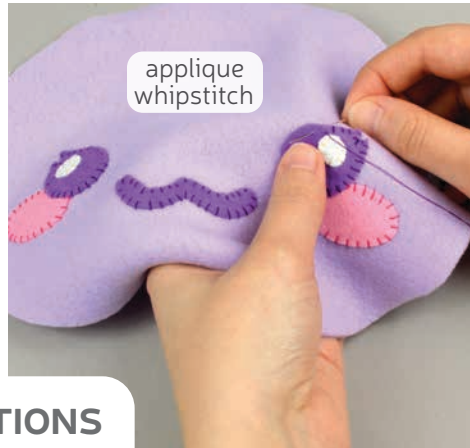
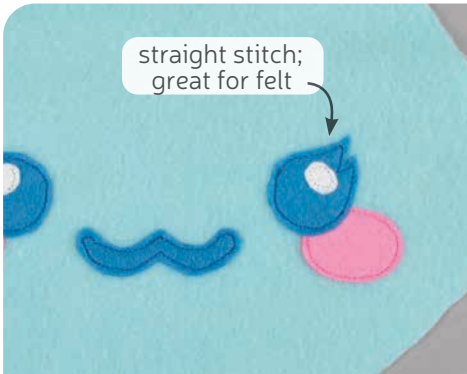
→ Also take this time to applique the muzzle and horn.

- The **MUZZLE** (F13) gets **nostril** applique (2, black) and also **mouth** applique (2, black).
- The **GALAR HORN** (PG17) also gets a **stripe** (1, white). Follow the same steps as before, tracing the design and fusing it to your main fabrics.



sew desu ne?

| WWW.CHOLYKNIGHT.COM |



4. OTHER APPLIQUE OPTIONS

- Other options for applique include a straight stitch. That's done by sewing around the edge of the applique pieces with a straight stitch using matching thread -- about 1/8" in from the edge.
- You can also applique by hand using a whipstitch. Thread a hand-sewing needle with some matching thread and knot it. Bring the thread up from the back of the project; about 1/8" in from the edge of the applique shape. Bring it down perpendicular from the curve, just outside of the applique shape. This completes one stitch.
- For the next stitch, bring the needle back up about 1/8" away from the previous stitch and 1/8" in from the edge just as in the first stitch. Once again, bring it down just outside the applique shape. Continue this way until you've sewn around the shape.



Refer to **steps 19-23** from the original **FARM MAMMALS PLUSH PATTERN** to sew the **HEAD FRONT** and **MUZZLE**. Stop when you reach the **EARS** (step 24). The following steps 5-6 will replace **steps 24-26** from the original pattern using the new **EAR** pieces (P3).

5. SEW THE EARS

- Grab your **EAR** pieces (P3). Take one from your main fabric and one from your inner ear fabric. Align them with right sides facing and the raw edges matching up.
- Sew the pieces together along the long curved edge. leave the straight edge free for turning the piece right side out. Turn the ear right side out, then repeat this once more so you have a matching pair.



sew desu ne?

| WWW.CHOLYKNIGHT.COM |



6. FOLD AND BASTE THE EARS

- Take your **EAR** (P3) and fold it so the inner ear fabrics are facing each other. Use the **fold line guide** found on the paper pattern for extra help, and the bottom raw edges should be flush.
- Baste the ear along the raw edge to hold the fold in place, then repeat once more with your other ear for a mirrored pair as shown.
- Baste the ears to the top of your head front so far. Ponyta's ears are placed a little further down than the original pony. Pin the ears about $\frac{1}{2}$ " away from the forehead seam at **point 1**. You can follow the tips in step 26 of the original instructions for extra help with basting. Make sure your inner ear fabric is facing down and the folds of the ear are pointing up. Baste the ears within the seam allowance to secure them for future steps.



Refer to **steps 29-34, then step 40** from the original **FARM MAMMALS PLUSH PATTERN**. This should complete:

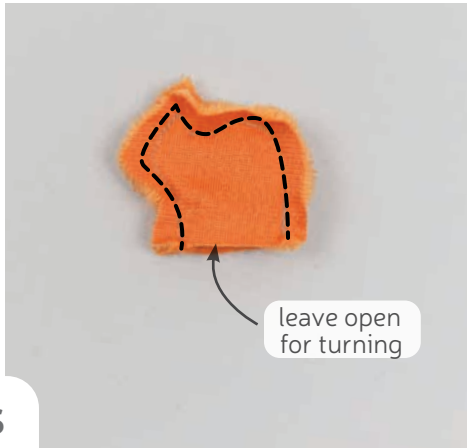
- Steps 29-32:** Completing the head.
- Steps 33-34:** Completing the inner legs and belly.
- Step 40:** Attaching the hooves to the body.
- Skip the tail steps, as a new tail will be added and described in more detail later.
- Stop before you reach **step 50** for attaching the body to the belly.

sew desu ne?

| WWW.CHOLYKNIGHT.COM |



The following **steps 7-10** are the new **LEG** and **BODY FLAME** additions for the **KANTO PONYTA**. Skip ahead to step 11 for a **GALAR PONYTA**.

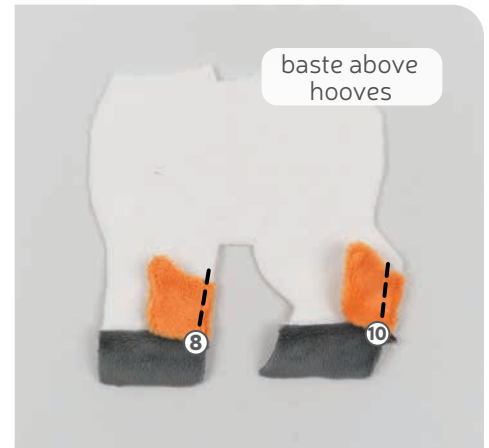


7. SEW THE LEG FLAMES

- Grab your **LEG FLAME** pieces (PK16). Take two of them and align them with right sides facing and the raw edges matching up.
- Sew the pieces together along the curved edge. Leave the straight edge free for turning the piece right side out later.
- Trim the excess seam allowance around the tight corners and curves of the piece. This will reduce bulk in that area so the shape looks pointy when it's been turned.

8. BASTE THE LEG FLAMES

- Turn the **LEG FLAME** piece (PK16) right side out through the opening you left. Define the points with a chopstick or similar turning tool. Repeat step 7 with your remaining leg flame pieces so you have 4 sewn flames total.

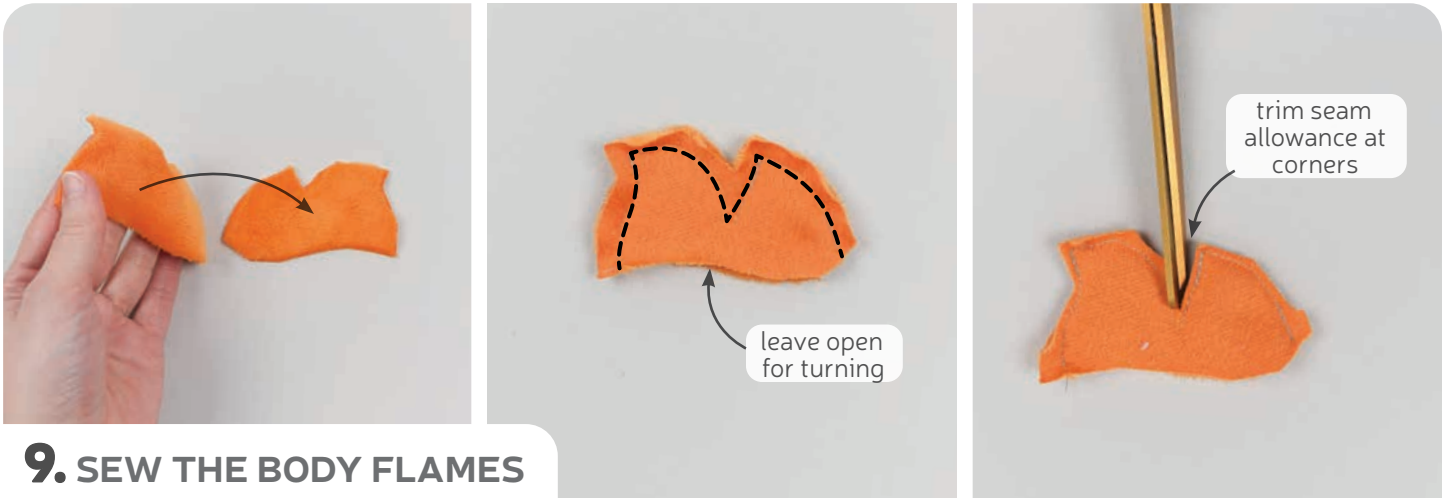


- Grab your **BODY** piece so far

(F5). Take your flames and baste them to the back edge of the front and back legs. Baste them right above the hooves, which should be at **point 8** for the front legs, and **point 10** for the back legs. Baste them within the seam allowance. Repeat this once more with your remaining leg flames and your remaining body piece. You should have 2 flames attached to each body piece for all 4 flames total.

sew desu ne?

| WWW.CHOLYKNIGHT.COM |



9. SEW THE BODY FLAMES

- Grab your **BODY FLAME** pieces (PK15). Align them with right sides facing and the raw edges matching up. Pin the fabrics together.
- Sew the flames together along the pointed edge. Leave the slightly curved edge free for turning the piece right side out.
- Trim the excess seam allowance at the corners of the piece. This will reduce bulk so the tips stay looking pointy. It will also increase flexibility at the inner corners so the piece turns more cleanly.

10. BASTE THE BODY FLAMES

- Turn the **BODY FLAMES** (PK15) right side out through the opening you left. Define the points with a chopstick or similar turning tool.
- Take your flames and baste them to the back edge of your **BODY** piece (F5). Align it just after the curve in the back of the neck (behind **point 16**).



sew desu ne?

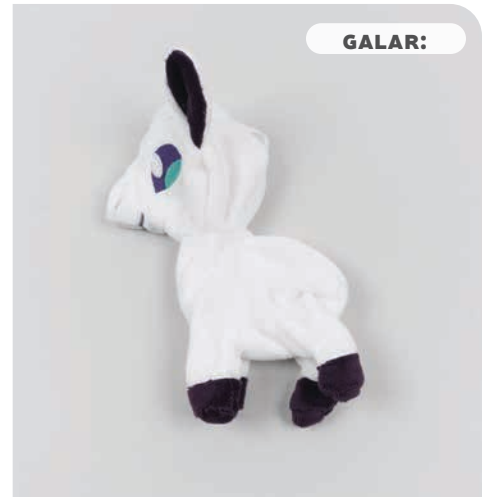
| WWW.CHOLYKNIGHT.COM |



Refer to **steps 50-68** from the original **FARM MAMMALS PLUSH PATTERN**. This should complete the body:

11. FINISH THE BODY

- a. **Steps 50-56:** Attach the belly to the body.
- b. **Steps 57-58:** Attach the hoof bottoms.
- c. **Step 59-61:** Attach the head and sew the back.
- d. **Step 62-68:** Clip, turn, stuff, and close the body.
- e. The remainder the plush is now sewn with a new mane and tail for either the **KANTO** or **GALAR** versions.



The next **steps 12-15** are the new **FLAME MANE** additions for the **KANTO PONYTA**. Skip ahead to step 16 for a **GALAR PONYTA**.

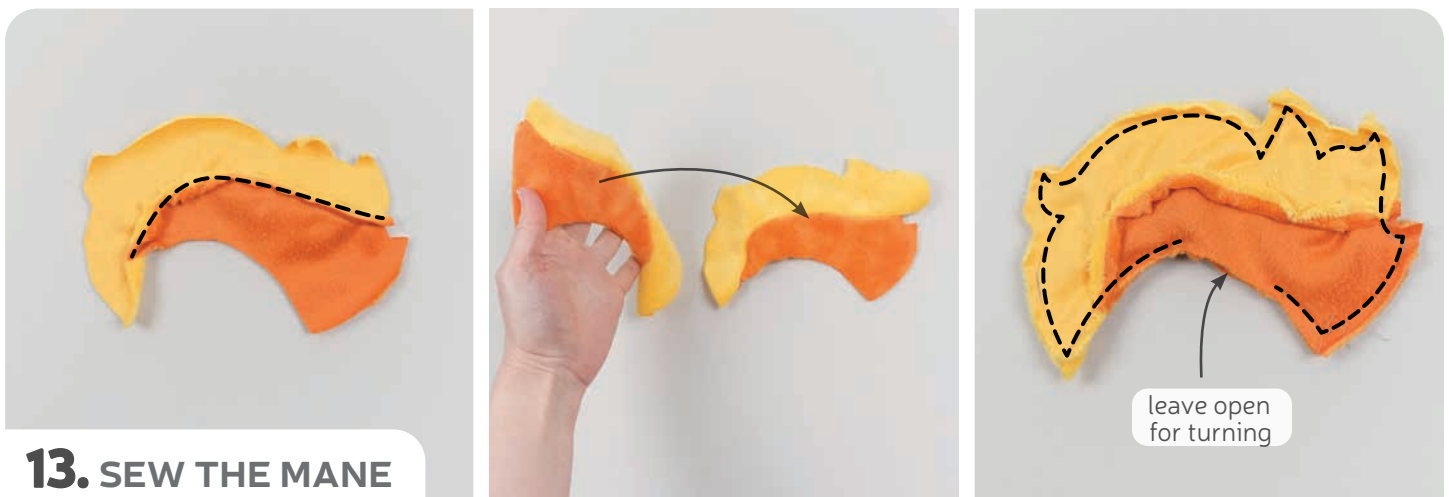
sew desu ne?

| WWW.CHOLYKNIGHT.COM |



12. ATTACH THE UPPER MANE

- Grab your **UPPER MANE** (PK14a) and **LOWER MANE** (PK14b) pieces. These pieces will join together along the inner curves as shown to make the entire two-toned mane. But these curves are also marked with a **notch marking** for help with alignment.
- Flip over your upper mane piece so it's right sides facing with the lower mane. Line up the **notched edges**. Bend the upper mane piece to line up the edges and pin the fabrics together.
- Sew the upper mane to the lower mane along this **notched edge**. Repeat this with your other mane pieces for two total.



13. SEW THE MANE

- Open up your **MANE** pieces (PK14) when complete.
- Take your two mane pieces and align them with right sides facing and the raw edges matching up. Pin the fabrics together.
- If you haven't already, note the **opening for turning markings** found on the paper pattern for the **LOWER MANE** (PK14b). Transfer these markings over to the wrong side of the fabrics you've just pinned. Sew the mane pieces together all the way around, but leave the **opening for turning** that you marked.

sew desu ne?

| WWW.CHOLYKNIGHT.COM |



14. TRIM & TURN THE MANE

- Trim the excess seam allowance around the tight corners of and curves of the **MANE** (PK14). Trimming the outer corners will reduce bulk and trimming the inner corners will increase flexibility in those areas. This will allow the piece to turn more cleanly.
- Turn the mane right side out through the opening you left. Define the points with a chopstick or similar turning tool.
- Stuff the mane lightly with stuffing. Be sure to get small bits in the tips and corners so it doesn't deflate over time.



15. ATTACH THE MANE

- If desired, you can loosely ladder stitch the **MANE** closed to keep the stuffing inside while you attach it to the head.
- Take your stuffed mane and align it over the top of your plush's head. Center it over the middle seams along the top so it curves around the head. The tip of the mane in the sample is placed about 1/2" down the center top of the head. You could also go a little more or less depending on your preference. Squish the mane into the head so it flattens out a bit at the bottom, creating a wider base for attaching.
- Attach the mane to the head using a ladder stitch. Sew all the way around the mane to secure it.

sew desu ne?

| WWW.CHOLYKNIGHT.COM |



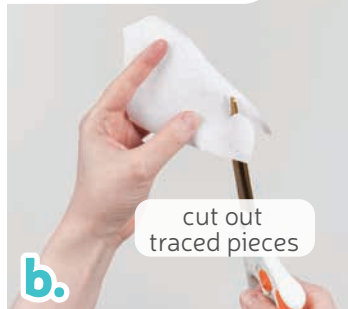
The following **steps 16-26** are the new **MANE, BANGS, & HORN** additions for the **GALAR PONYTA**. Skip ahead to step 27 for a **KANTO PONYTA**.

16. APPLIQUE THE MANE & TAIL



trace
applique
templates

a.



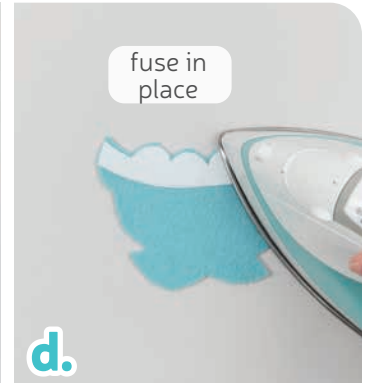
cut out
traced pieces

b.



align onto back
of applique

c.



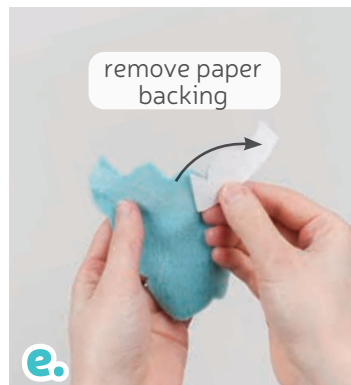
fuse in
place

d.

- a. The contrast color on **GALAR PONYTA'S** mane and tail call for some slight changes to the usual applique method. Start first by grabbing your fusible web and tracing the **bottom mane** and **bottom tail** applique templates from the paper pattern.
- b. Cut out the pieces precisely around the traced lines.
- c. Grab your **BOTTOM MANE** (PG14d) and **BOTTOM TAIL** (PG11c) pieces. Align the adhesive side of your fusible web onto the wrong side of these pieces, right along the scalloped edge. This is the edge we'll be attaching to the purple mane and tail.
- d. Fuse the fusible web to your accent pieces. Repeat this for all 4 pieces, 2 for the mane and 2 for the tail.

- e. Peel away the paper backing of the fusible web.

- f. Grab your base purple fabric piece, here it's the **TAIL** (PG11a). Align your applique piece on top so the right sides are both facing up.



remove paper
backing

e.



align onto
base piece

f.



fuse in
place

g.

- g. Fuse the applique layer to the base layer with your iron. It should only be attached along the scalloped edge. This will help prevent extra bulkiness from using adhesive all over the accent piece. You can even trim away the excess base fabric if desired. Repeat this with your remaining mane and tail pieces so they all have the accent fabric attached.

sew desu ne?

| WWW.CHOLYKNIGHT.COM |

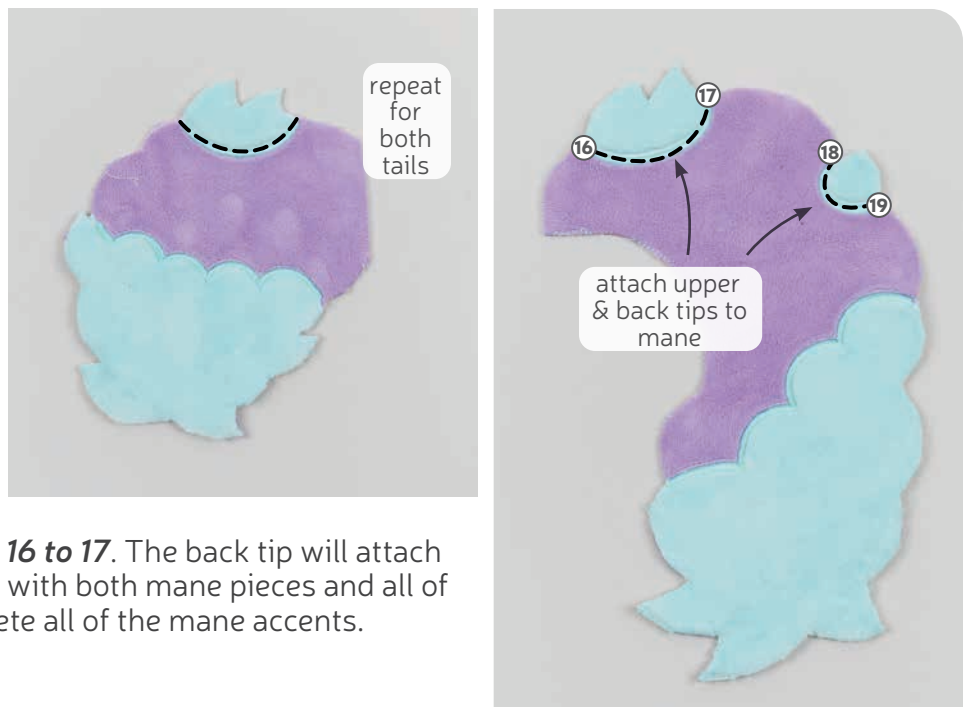


17. ATTACH THE MANE & TAIL TIPS

- Next we're going to attach the tiny accent tips to the **MANE** (PG14a) and **TAIL** (PG11a). Start by grabbing your **TAIL** and **TAIL TIP** (PG11b). These pieces will join together along the inner curves as shown. But you can also look for the **numbered points** for help with alignment. Look for **points 20 and 21**.
- Take your tail and flip it over so now it's right sides facing with the tip. Line up **points 20 and 21** and pin the fabrics together along the edges between.
- Sew the tail to the tail tip from **point 20 to 21**.

18. FINISH THE TIPS

- Repeat step 17 with your remaining **TAIL** (PG11a) and **TAIL TIP** pieces (PG11b). This completes all of the tail accents. Hold onto these until step 30 for sewing and attaching the tail.
- Now grab your **MANE** pieces (PG14a), the **UPPER TIP** (PG14b), and **BACK TIP** (PG14c). Repeat step 17 with these pieces as well. The upper tip will attach from **point 16 to 17**. The back tip will attach from **point 18 to 19**. Repeat this with both mane pieces and all of your tip pieces. This will complete all of the mane accents.

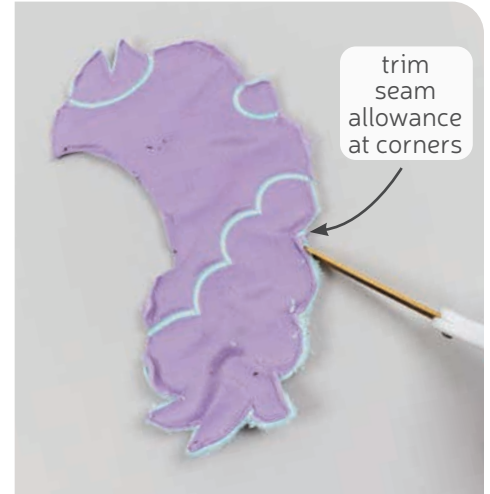
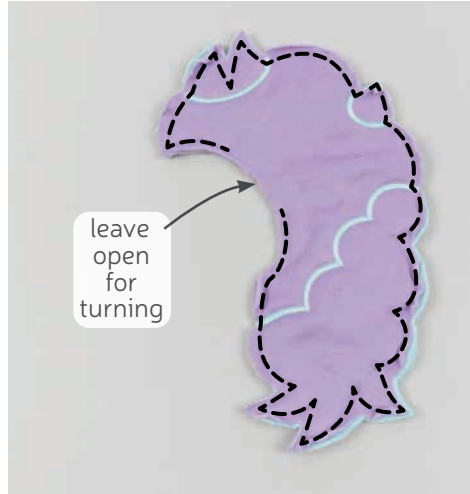


sew desu ne?

| WWW.CHOLYKNIGHT.COM |



19. SEW THE MANE



- Take your two **MANE** pieces (PG14) and align them with right sides facing and the raw edges matching up. Pin the fabrics together.
- If you haven't already, note the **opening for turning markings** found on the paper pattern for the mane. Transfer these markings over to the wrong side of the fabrics you've just aligned. Sew the mane pieces together all the way around, but leave the **opening for turning** that you marked. Be sure to pivot around all of the curves and points of the shape.
- Trim the excess seam allowance around the tight corners of and curves of the mane. Trimming the outer corners will reduce bulk and trimming the inner corners will increase flexibility in those areas. This will allow the piece to turn more cleanly.



20. TURN & STUFF THE MANE



- Turn the mane right side out through the opening you left. Define the points with a chopstick or similar turning tool.
- Stuff the mane lightly with stuffing. Be sure to get small bits in the tips and corners so it doesn't deflate over time.
- If desired, you can loosely ladder stitch the mane closed to keep the stuffing inside while you attach it to the head.

sew desu ne?

| WWW.CHOLYKNIGHT.COM |



21. ATTACH THE MANE



- Take your stuffed **MANE** and align it over the top of your plush's head. Start the front tip of the mane at the center top of the head. This should leave room for the **BANGS** and **HORN** later. Then curve the mane around the back of the head until it reaches the bottom of the side head seam. This will align the mane at an angle so it cascades over the shoulder of the plush.
- Squish the mane into the head so it flattens out a bit at the bottom, creating a wider base for attaching. Attach the mane to the head using a ladder stitch.
- Sew all the way around the mane to secure it.



22. SEW THE HORN



- Grab your **HORN** (PG17). Fold it in half lengthwise so it makes an even skinnier triangle. Make sure right sides are facing and pin the fabrics together.
- Sew the horn piece along the straight edge. Leave the slightly curved edge at the bottom free for turning the piece right side out.
- Turn the horn right side out and define the point with a chopstick or similar turning tool.

sew desu ne?

| WWW.CHOLYKNIGHT.COM |

23. STUFF & CINCH THE HORN

- Stuff the **HORN** (PG17) semi-firmly with stuffing. Be sure to get small bits into the tip of the horn so it stays looking pointy and doesn't flatten over time.
- Grab a hand sewing needle and knot the end. Sew a gathering stitch around the opening of the horn, about $\frac{1}{4}$ " away from the raw edge. Pull at the thread to cinch the horn closed. Sew a few knots into the center to hold it closed. Set aside the horn for a moment while we make the bangs. We'll want to align the horn and bangs to the head at the same time.



24. SEW THE BANGS

- Grab your **BANGS** (PG15). Align them with right sides facing and the raw edges matching up.
- Sew the pieces together all the way around the shape.
- Trim the excess seam allowance at the tight corners and curves of the piece so it turns more cleanly.



sew desu ne?

| WWW.CHOLYKNIGHT.COM |



25. TURN & STUFF THE BANGS

- To turn the **BANGS** (PG15), cut a short slit through one layer of the fabric only. This is centered near the top of the bangs, but you can also use the **cutting guide** on the paper pattern for extra help.
- Turn the bangs right side out through the opening you've cut.
- Stuff the bangs lightly with stuffing. Be sure to get small bits into the corners so they stay looking pointy and don't deflate over time.



26. ATTACH THE HORN & BANGS

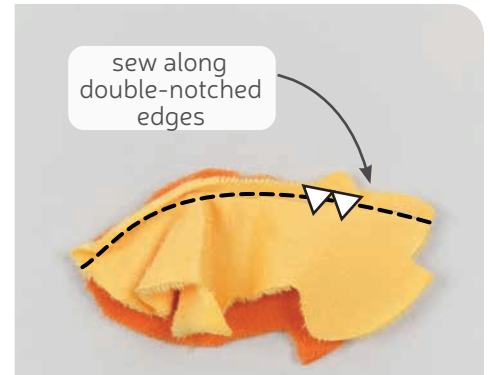
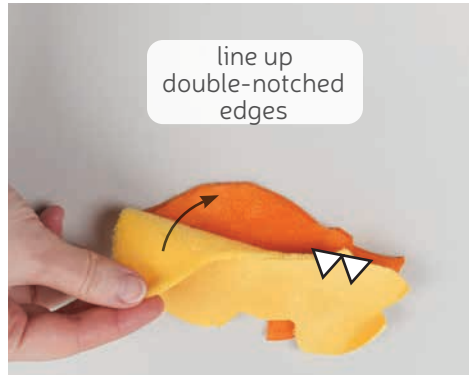
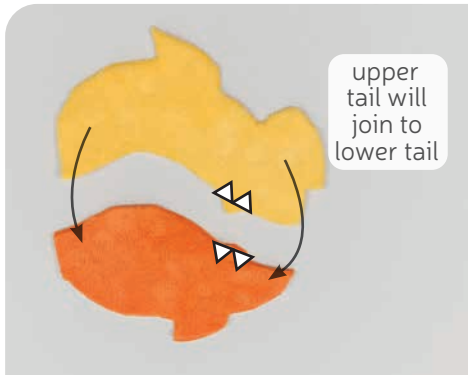
- Take your stuffed **HORN** (PG17) and **BANGS** (PG15) and align them over the forehead of your plush. They should overlap the tip of the **MANE** (PG14) with the bangs wrapping around the horn. When you have the placement how you like, prepare to attach them.
- Align the horn onto the forehead of your plush and ladder stitch it to the head around the base of the horn.
- Now take the bangs and wrap them around the horn. Also ladder stitch this in place by sewing around the cut you made in the previous step.

sew desu ne?

| WWW.CHOLYKNIGHT.COM |

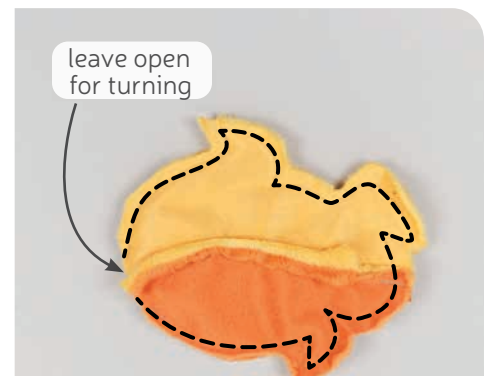
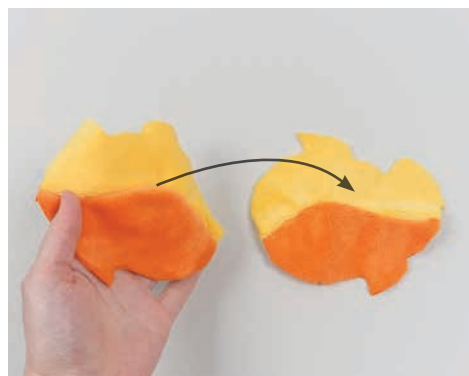


The next **steps 27-29** are the new **FLAME TAIL** additions for the **KANTO PONYTA**. Skip ahead to step 30 for a **GALAR PONYTA**.



27. ATTACH THE UPPER TAIL

- Grab your **UPPER TAIL** (PK11a) and **LOWER TAIL** (PK11b) pieces. These pieces will join together along the inner curves as shown to make the entire two-toned tail. But these curves are also marked with a **double notch marking** for help with alignment.
- Flip over your upper tail piece so it's right sides facing with the lower tail. Line up the **double notched edges**. Bend the upper tail piece to line up the edges and pin the fabrics together.
- Sew the upper tail to the lower tail along this **double notched edge**. Repeat this with your other tail pieces for two total.



28. SEW THE TAIL

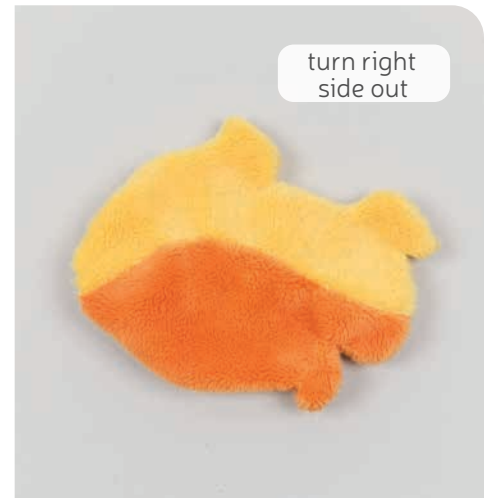
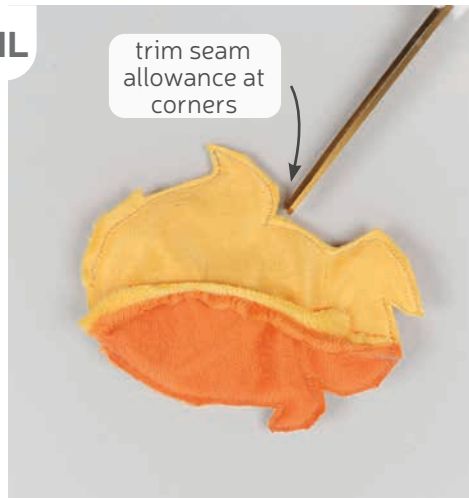
- Open up your **TAIL** pieces (PK11) when complete.
- Take your two tail pieces and align them with right sides facing and the raw edges matching up. Pin the fabrics together.
- Sew around the curved and pointed edges of the tail. Leave the short straight edge of the tail open for turning. This is also marked on the paper pattern for extra help with finding it.

sew desu ne?

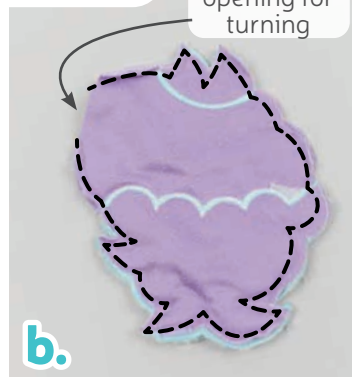
| WWW.CHOLYKNIGHT.COM |

29. TRIM & FLIP THE TAIL

- Trim the excess seam allowance around the tight corners and curves of the **TAIL** (PK11). Trimming the outer curves will reduce bulk and trimming the inner curves will increase flexibility in those areas. This will allow the piece to turn more cleanly.
- Turn the tail right side out through the opening you left. Define the points with a chopstick or similar turning tool.



30. SEW THE GALAR TAIL



- Take your two **TAIL** pieces (PG11) and align them with right sides facing and the raw edges matching up. Pin the fabrics together.
- Sew around the curved and pointed edges of the tail. Leave the short straight edge of the tail open for turning. This is also marked on the paper pattern for extra help with finding it.
- Trim the excess seam allowance around the tight corners and curves of the tail. Trimming the outer curves will reduce bulk and trimming the inner curves will increase flexibility in those areas. This will allow the piece to turn more cleanly.
- Turn the tail right side out through the opening you left. Define the points with a chopstick or similar turning tool.

sew desu ne?

| WWW.CHOLYKNIGHT.COM |

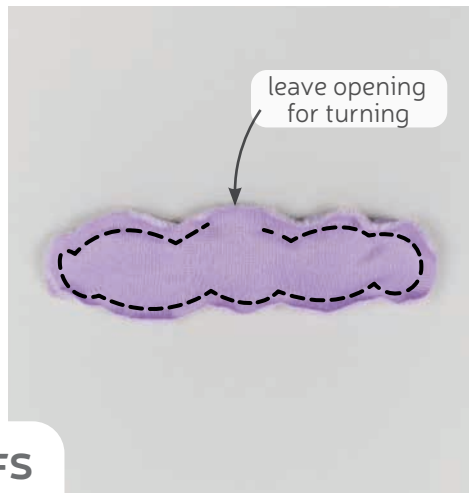
31. ATTACH THE TAIL

- Stuff the **TAIL** (PK11 or PG11) semi-firmly with stuffing. Be sure to get small bits in the tips of the tail so they stay looking pointy and don't deflate over time.
- Use a gathering stitch to cinch the tail closed. You can refer to **step 73** of the original plush instructions if you need help.
- Take your finished tail and ladder stitch it to the back end of your plush all the way around.



FOR A KANTO PONYTA: you're done!

FOR A GALAR PONYTA: continue below for the final leg fluff pieces.



32. SEW THE LEG FLUFFS

- Grab your **LEG FLUFF** pieces (PG16). Take two of them and align them with right sides facing and the raw edges matching up. Pin the fabrics together.
- If you haven't already, note the **opening for turning** markings found on the paper pattern for the leg fluffs. Transfer these markings onto the wrong side of the fabrics you've pinned. Sew entirely around the leg fluff piece, but leave the **opening for turning** that you marked.
- Trim the excess seam allowance around the tight corners and curves of the leg fluffs. This will help reduce bulk and increase flexibility in those areas so they turn more cleanly.

sew desu ne?

| WWW.CHOLYKNIGHT.COM |



33. TURN & STUFF THE LEG FLUFFS

- Turn your **LEG FLUFF** piece (PG16) right side out. Repeat step 32 three more times so you have 4 fluffs total.
- Stuff the leg fluffs very lightly with stuffing. This is just to make the pieces puff out a bit, so it doesn't need much.
- If desired, tuck in the seam allowance and ladder stitch the leg fluff closed. You can also do this as you're attaching them to the legs if you're more experienced.



34. ATTACH THE LEG FLUFFS

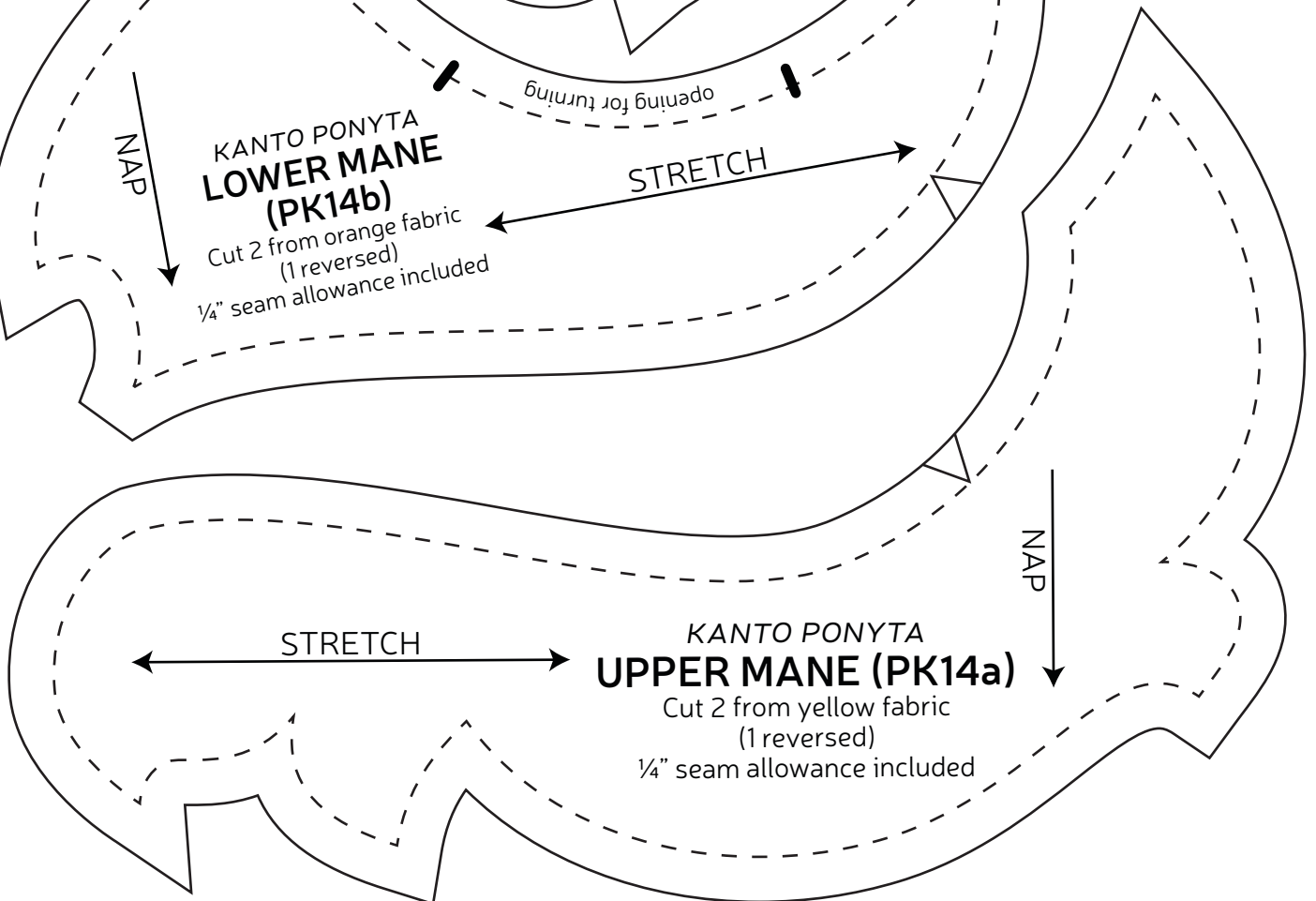
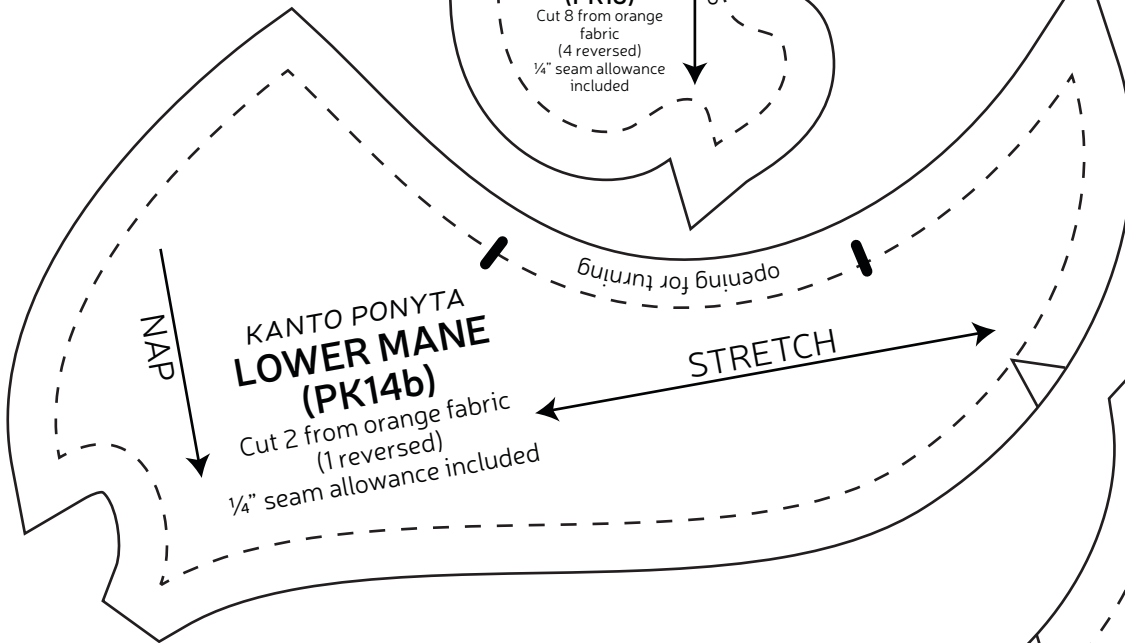
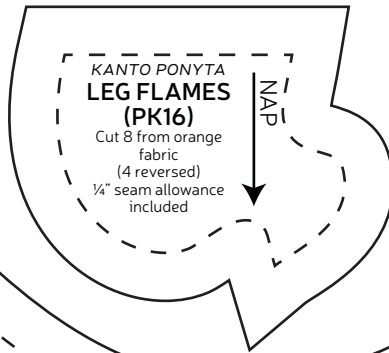
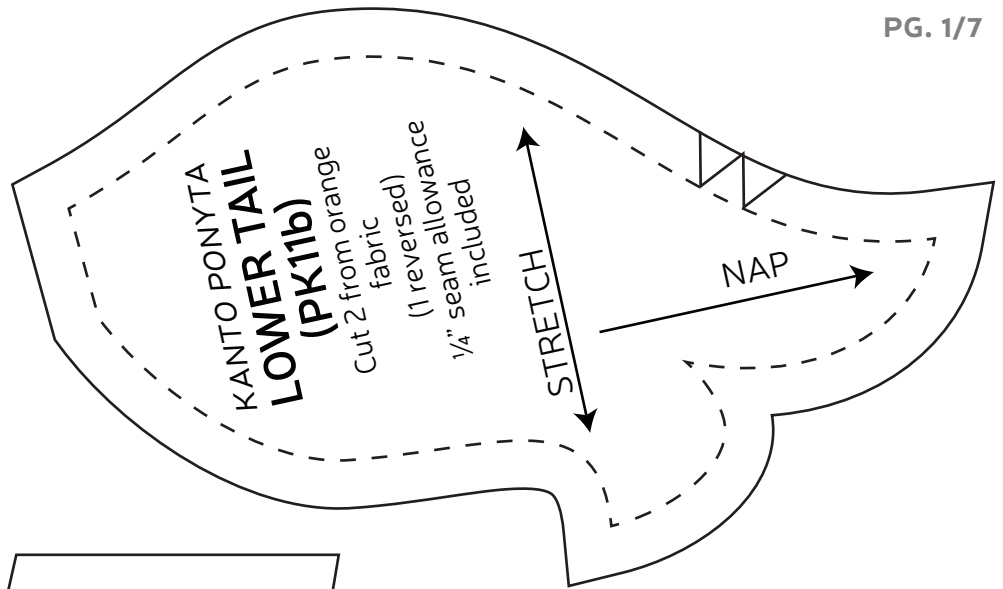
- Take your sewn and stuffed **LEG FLUFF** (PG16) and wrap it around the leg of your plush. It should be centered on the hoof seam.
- Wrap it around the leg and it should overlap by about $\frac{1}{2}$ ". Take a hand sewing needle and ladder stitch the ends so the overlap is secured.
- Ladder stitch the rest of the leg fluff to the leg. It helps to stitch on the underside of the fluff piece, about $\frac{1}{8}$ " away from the seam. This will make the fluff piece stick out slightly instead of sinking into the leg.
Repeat this 3 more times so all 4 leg fluffs are attached.

sew desu ne?

| WWW.CHOLYKNIGHT.COM |

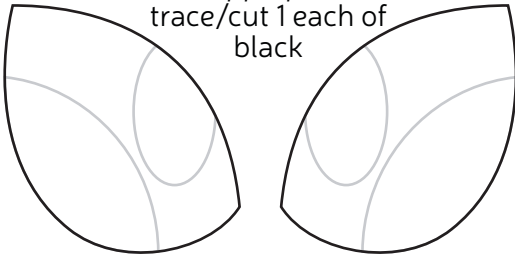
TEST SQUARE
2"

measure this square to be sure you've printed at the proper proportions



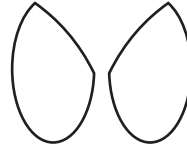
KANTO PONYTA
EYE

applique
trace/cut 1 each of
black



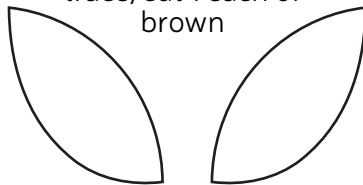
KANTO PONYTA
EYE SHINES

applique
trace/cut 1 each of
white



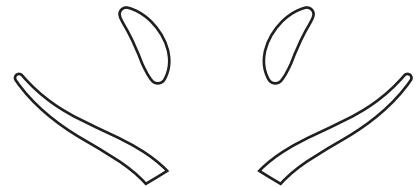
KANTO PONYTA
EYE HIGHLIGHTS

applique
trace/cut 1 each of
brown



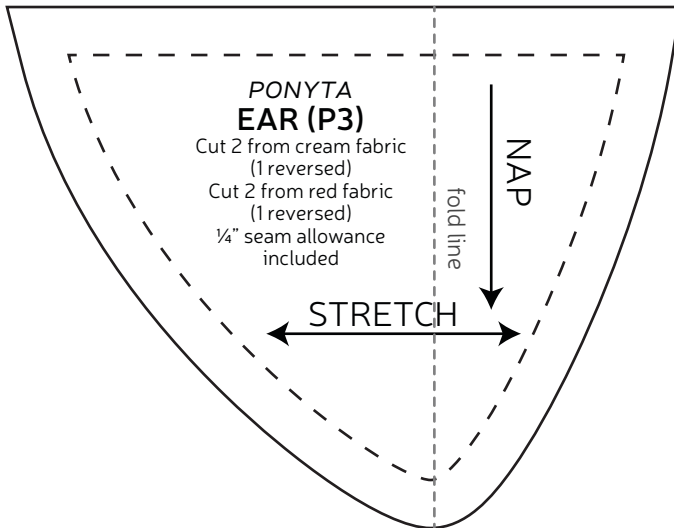
PONYTA
NOSTRILS & MOUTH

applique
trace/cut 1 each of
black or dark gray

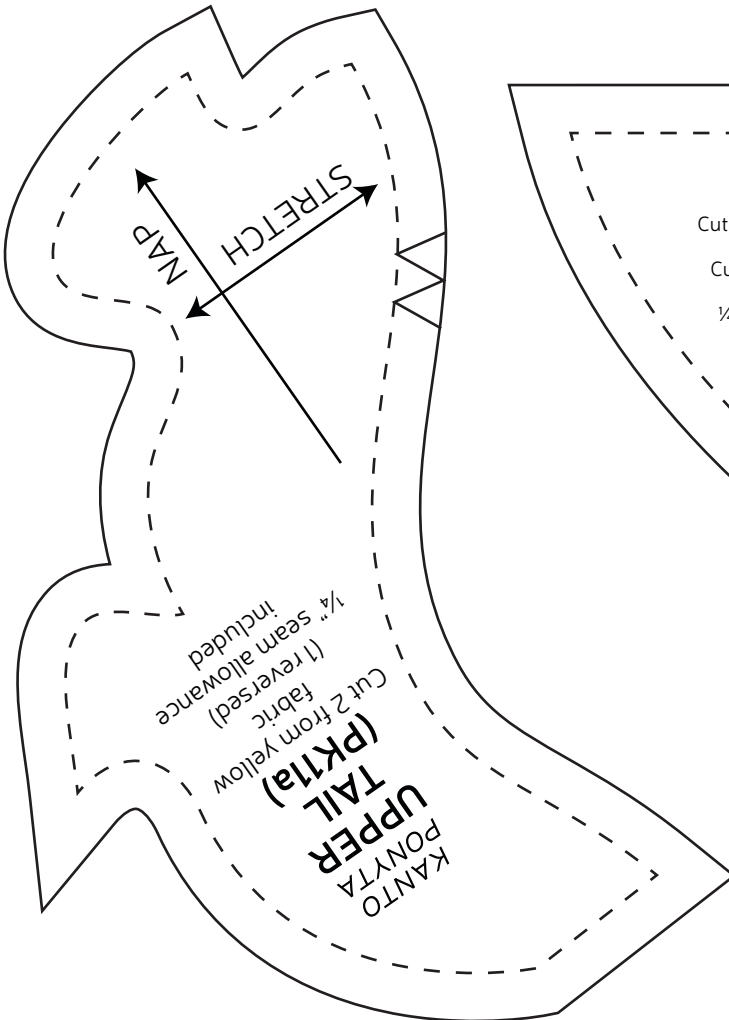


PONYTA
EAR (P3)

Cut 2 from cream fabric
(1 reversed)
Cut 2 from red fabric
(1 reversed)
¼" seam allowance
included

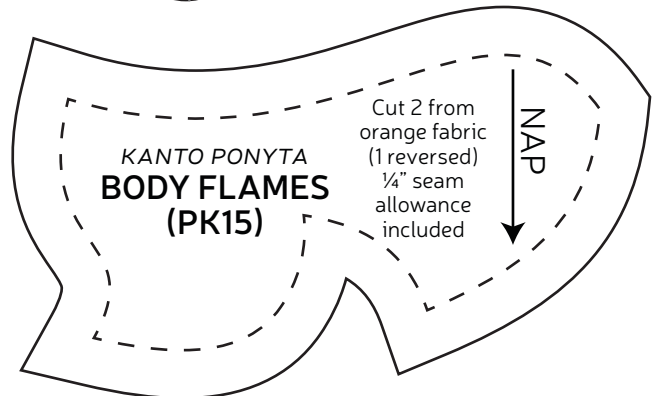


KANTO PONYTA
UPPER TAIL (PK1a)
Cut 2 from yellow fabric (1 reversed)
¼" seam allowance included



KANTO PONYTA
BODY FLAMES (PK15)

Cut 2 from orange fabric
(1 reversed)
¼" seam allowance
included



GALARIAN PONYTA
HORN (PG17)

Cut 1 from black fabric
1/4" seam allowance included

NAP

20

GALARIAN PONYTA
TAIL TIP (PG11b)

NAP

Cut 2 from
aqua fabric
(1 reversed)
1/4" seam
allowance
included

21

opening for turning

1/4" seam allowance included

GALARIAN PONYTA
TAIL (PG11a)

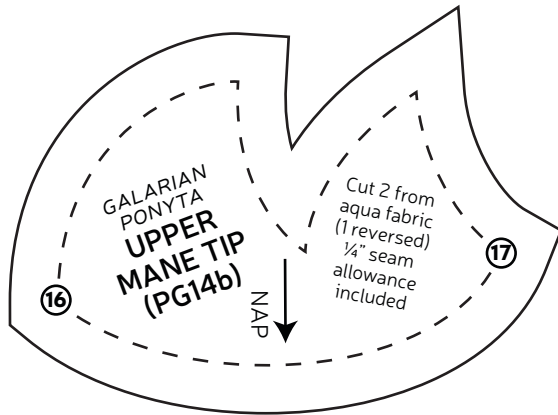
Cut 2 from lilac fabric
(1 reversed)

STRETCH

NAP

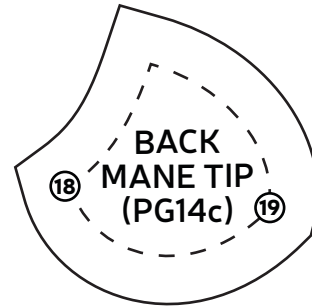
20

21



GALARIAN PONYTA
UPPER
MANE TIP
(PG14b)

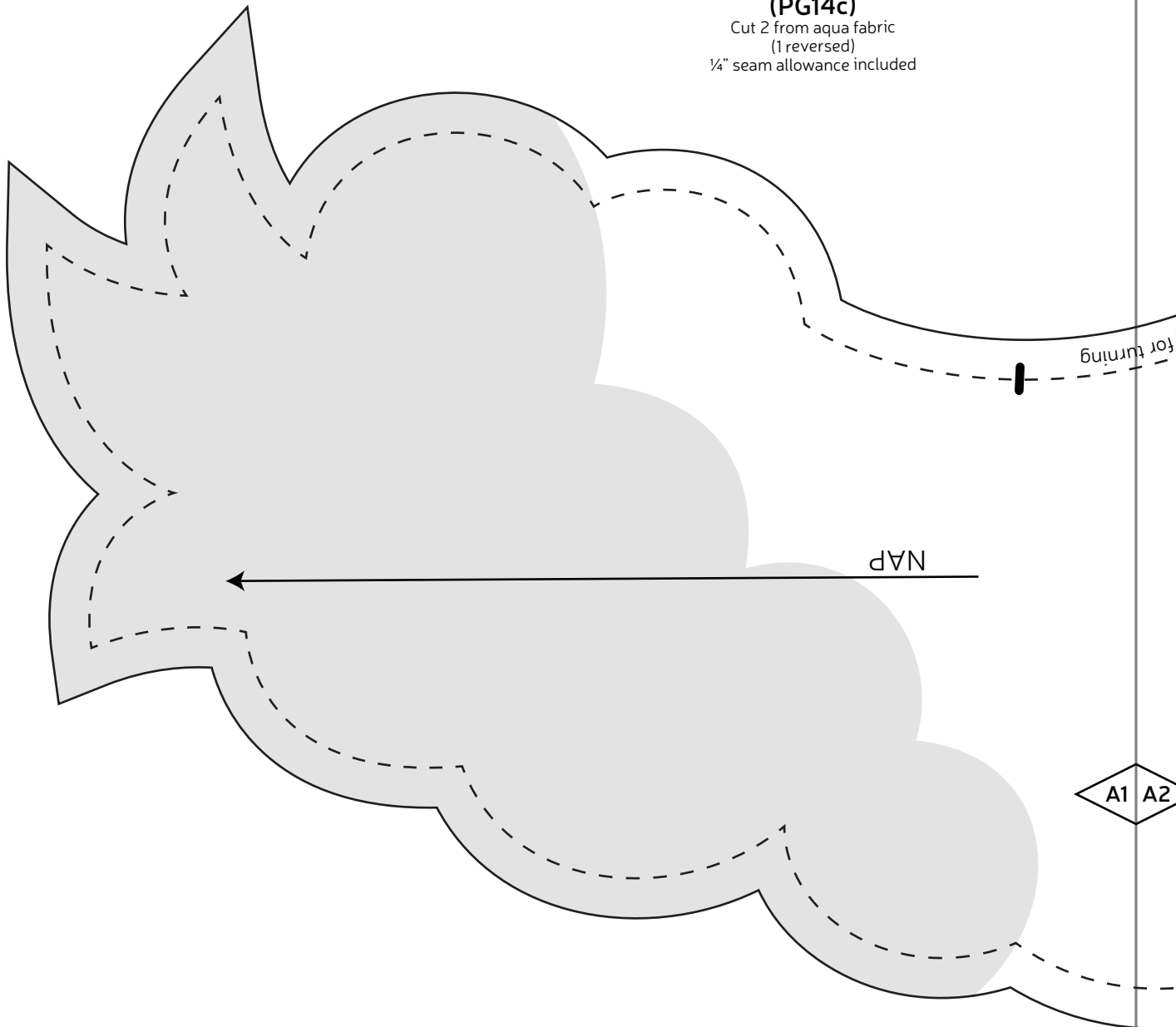
Cut 2 from
aqua fabric
(1 reversed)
¼" seam
allowance
included



BACK
MANE TIP
(PG14c)

GALARIAN PONYTA
BACK MANE TIP
(PG14c)

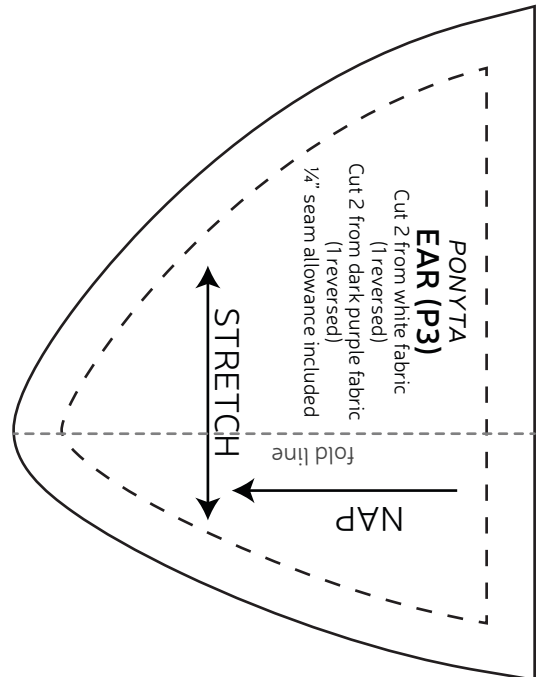
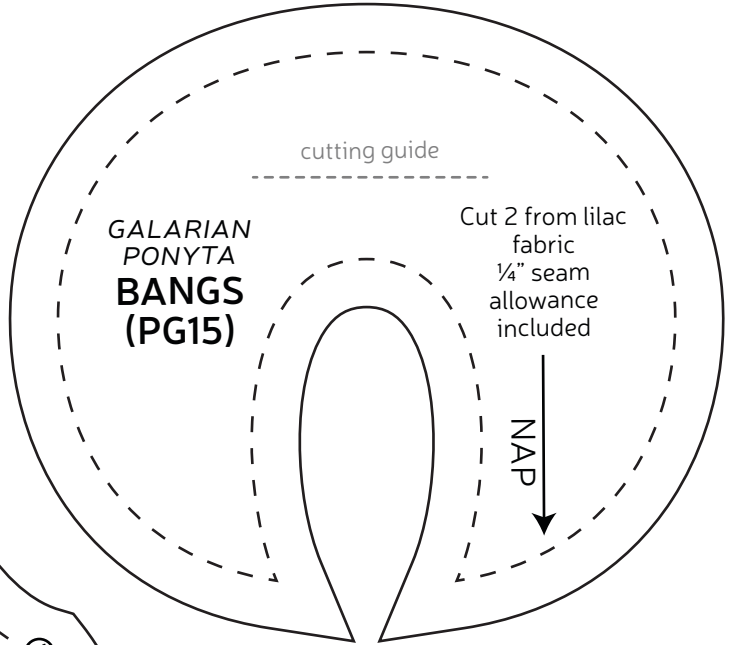
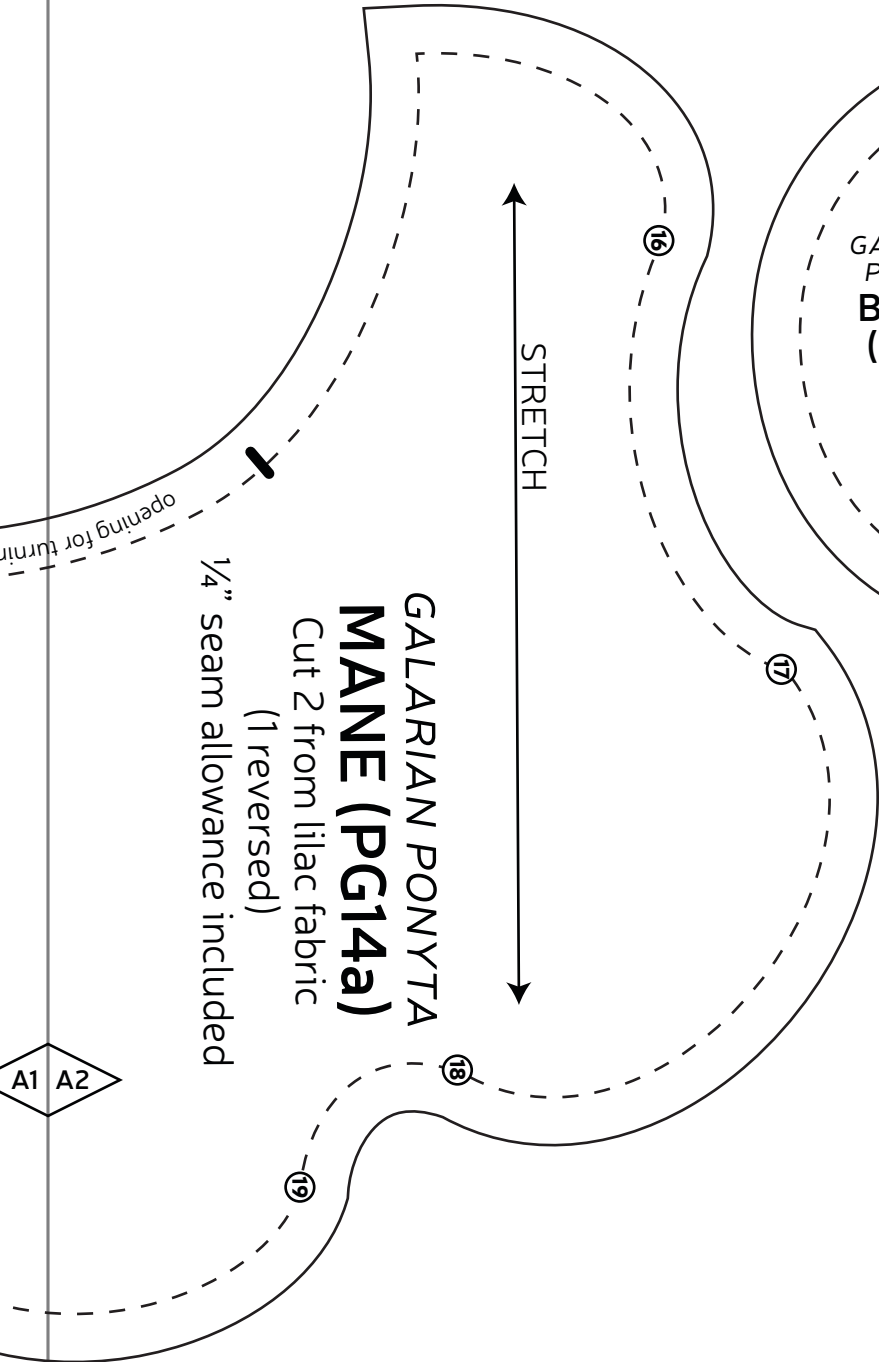
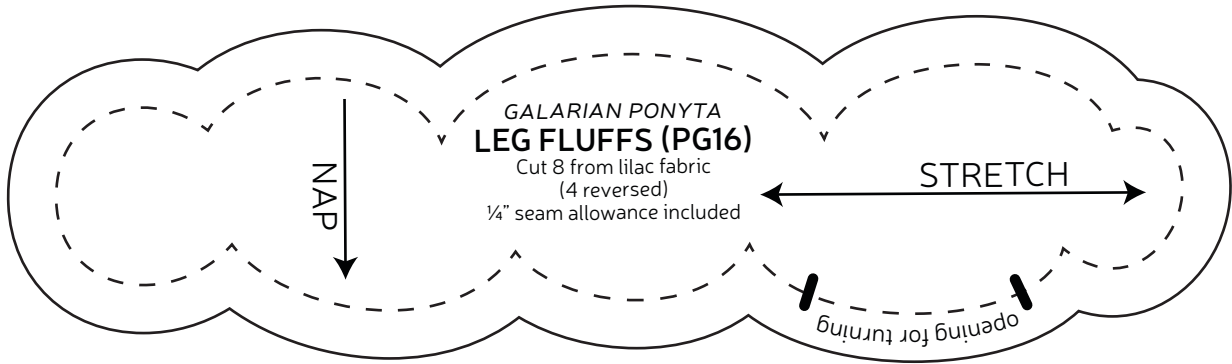
Cut 2 from aqua fabric
(1 reversed)
¼" seam allowance included



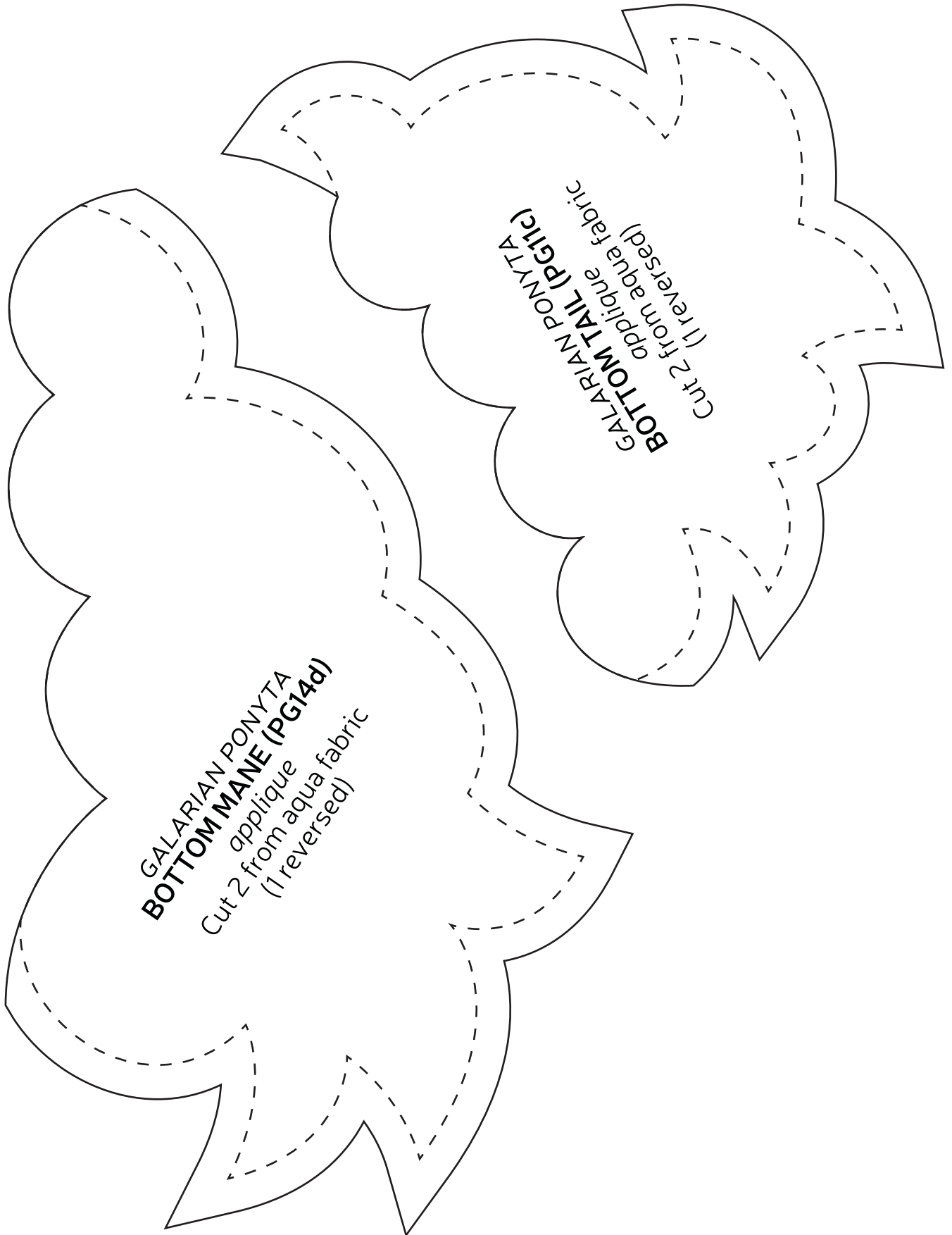
NAP

for turning

A1 A2

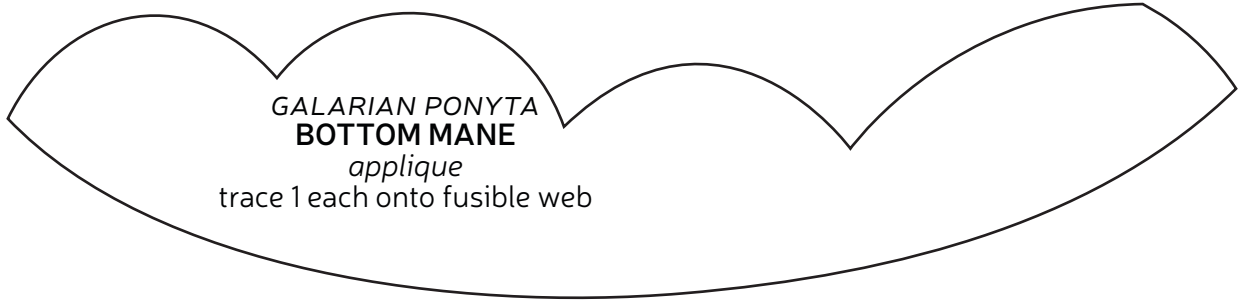


A1 A2

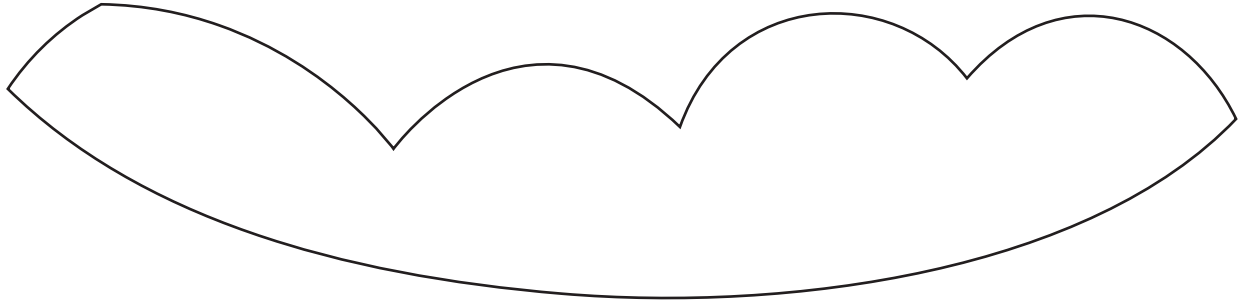


GALARIAN PONYTA
BOTTOM MANE (PG14d)
Cut 2 from aqua fabric
(1 reversed)

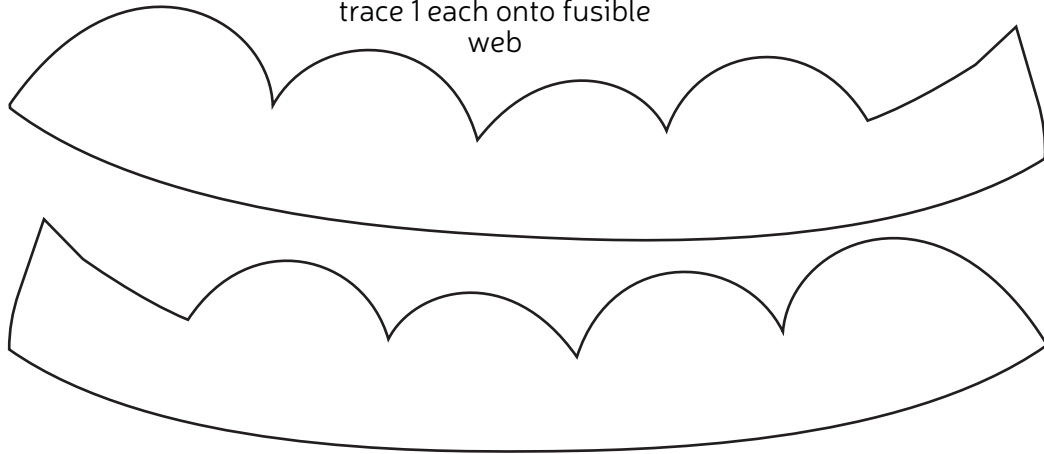
GALARIAN PONYTA
BOTTOM TAIL (G11c)
Cut 2 from aqua fabric
(1 reversed)



GALARIAN PONYTA
BOTTOM MANE
applique
trace 1 each onto fusible web

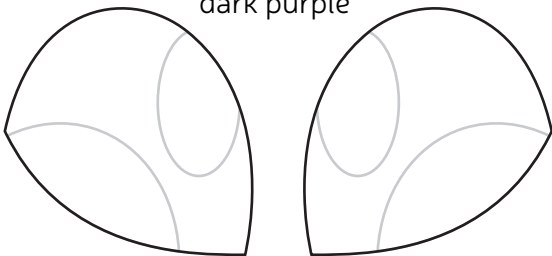


GALARIAN PONYTA
BOTTOM TAIL
applique
trace 1 each onto fusible web

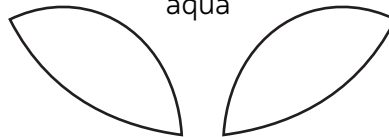


GALARIAN PONYTA
HORN STRIPE
applique
trace/cut 1 of white

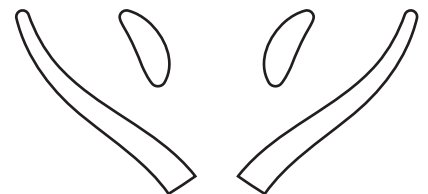
GALARIAN PONYTA
EYE
applique
trace/cut 1 each of dark purple



GALARIAN PONYTA
EYE HIGHLIGHTS
applique
trace/cut 1 each of aqua



PONYTA
NOSTRILS & MOUTH
applique
trace/cut 1 each of black or dark gray



GALARIAN PONYTA
EYE SHINES
applique
trace/cut 1 each of white

