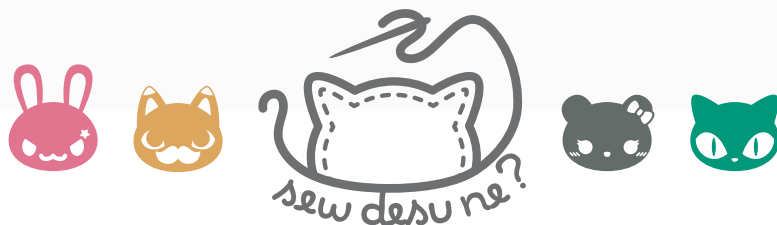


HAKU

LONG NECK CUDDLE PLUSH SEWING PATTERN HACK



a free sewing pattern by



HAKU PATTERN HACK

This pattern hack is meant to work alongside my **LONG NECK CUDDLE PLUSH SEWING PATTERN**. It is a set of extra templates that add additional features to the base head and body of the pattern's **EASTERN DRAGON** templates. With those together you can make an epic long version of Haku, the majestic river spirit dragon from *Spirited Away*! In these instructions you'll find a guide for sewing the new forehead, upper head fur, and clawed feet and how they're incorporated into the original design.



+



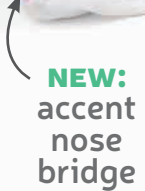
=



NEW:
narrow
horns



NEW:
accent
nose
bridge



uses
**EASTERN
DRAGON**
body base



NEW:
clawed
feet



NEW: upper
head fur



NEW:
skinnier
whiskers



sew desu ne?

| WWW.CHOLYKNIGHT.COM |

DIFFICULTY:

This version of the pattern has about the same difficulty as the original. The hardest parts are likely all the curves in the body and the time needed to add all the hand sewn details.

MAKES:

ONE PLUSH: about 38" long from nose to tail tip, 10" wide from back leg to back leg, and 5" tall from belly to top of back

SKILLS USED:

- ladder stitch
- fusible web applique
- sewing curves (straight to curved pieces, inner to outer curves, outer to outer curves, etc.)
- darts
- matching notches & points
- basting
- gathering; gathering stitch

FABRICS & NOTIONS:

- 1 yd. of white fabric for main body
- 7" x 36" strip of gray fabric for belly
- 1/3 yd. of teal fabric for body fur
- 1/4 yd. of pink fabric for inner ears and clawed feet
- 1/8 yd. of gold fabric for horns
- basic sewing tools (sewing machine, scissors, iron, ironing board, needles, pins, fabric marker, seam ripper, point turner or chopstick)
- matching sewing thread
- poly-fil stuffing
- **APPLIQUE SUPPLIES:**
 - 3" x 3" of white applique fabric for eye whites and eye shines
 - 3" x 3" of green applique fabric for irises
 - 3" x 3" of black applique fabric for pupils and eyelids
 - 2" x 2" of pink applique fabric for nose
 - 3" x 3" of gray applique fabric for nose bridge
 - 6" x 6" of light or heavy duty fusible web

FUSIBLE WEB:

- Fusible web adhesive is a sheet of adhesive with a paper backing.
Not to be confused with fusible interfacing, which is adhesive attached to a fabric/fiber backing.
- Some common brands are **Pellon & HeatnBond**
- In countries outside the US, it may also be known as **bondaweb**
- It comes in **light** and **heavy duty** varieties. Lightweight strength is meant for applique you intend to sew later. Heavy duty versions are for a no-sew bond. If you try to sew them later your machine might have trouble penetrating the glue.

APPLIQUE FABRICS:

- Good applique fabrics include **flannel, cotton, felt, minky**, and **fleece**.
- Flannel and cotton are best for detailed applique with a lot of layers because they're thinner. Meanwhile felt, minky, and fleece are better for simpler applique like body markings.
- **Flannel** is used in the example instructions (page 7).

sew desu ne?

| WWW.CHOLYKNIGHT.COM |

fabric comparison:



SUGGESTED MAIN FABRICS:

MINKY OR FLEECE

Medium weight, plush fabrics with about 20%-30% stretch along the crosswise grain work best for this project. The varieties shown to the left are some good options and names to look for. Try to avoid heavyweight versions of fleece that are intended for outdoor apparel or they may cause trouble for the detailed areas.

You can also use non-stretch fabrics (such as felt), but be aware that the curves will be more difficult to sew and the result will look different. The plush will become more elongated and the edges will look sharper.

10" of minky stretches to 13" = 30% stretch

MINKY VS. FELT



sew desu ne?

| WWW.CHOLYKNIGHT.COM |

FABRIC CUTTING GUIDE:

Follow the cutting guide below for what colors to cut from the pattern pieces from the **LONG NECK CUDDLE PLUSH PATTERN**. To the left are the original pieces and to the right are new pattern hack pieces

The new pieces have the same letter as the original, but a new prefix: **H FOR HAKU**. For example the **ANTLERS/HORNS (B13)** have been changed to **H13 FOR HAKU**.



Before cutting out your fabric, the original templates need one adjustment. Take the **EASTERN DRAGON BODY** piece (B3) and your **BODY TRIMMING GUIDE** (H3). Align the trimming guide over the back foot area. The **circle markings** at the toe should align.



Trace the edge of the trimming guide onto your body template. This edge has a **thicker black line**. You may also want to transfer the numbered points at the corners: **points 17 & 18**.



Cut the paper template along the line you traced. This will make a space to add the new **CLAWED LEGS** (instead of paw-like feet from the original).

LABEL	NAME	COLOR
ORIGINAL PATTERN		
B1	HEAD SIDE	WHITE
B2	HEAD BACK	WHITE
B3	BODY BACK	WHITE
B4	BELLY	LIGHT GRAY
B7	BACK SPIKES	TEAL
B10	HEAD BOTTOM	WHITE
B11	EARS	WHITE, PINK
B12	TAIL SPIKES	TEAL
B16	HEAD FUR	WHITE

LABEL	NAME	COLOR
PATTERN HACK		
H5A	OUTER FRONT ARM	WHITE
H5B	INNER FRONT ARM	WHITE
H6	INNER LEG	WHITE
H8A	CLAW ARM/LEG	PINK
H8B	UPPER CLAW	PINK
H8C	CLAW BOTTOM	PINK
H9A	UPPER FOREHEAD	WHITE
H9B	LOWER FOREHEAD	WHITE
H13	HORNS	GOLD
H14	UPPER HEAD FUR	TEAL
H17	WHISKERS	WHITE

sew desu ne?

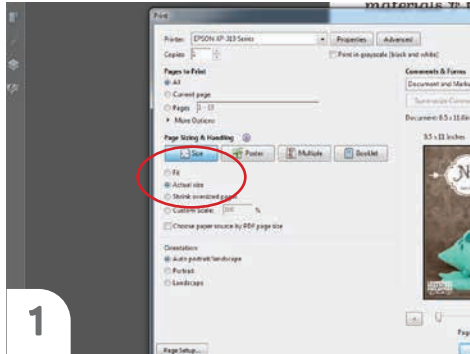
| WWW.CHOLYKNIGHT.COM |

PRINTING THE PATTERN:

Set your computer to print **PAGE 21-24.**

If you're unfamiliar with printing and assembling a .pdf pattern, read the steps to follow.

For the best results, use a .pdf reader like **ADOBE READER.** That's what is shown here and will give you the most control over the settings.



1

At the print dialog box, check the box that says print at "Actual Size" or 100%. Any other selection (such as "Fit to page") will distort the pattern so it's slightly larger or smaller and we don't want that.



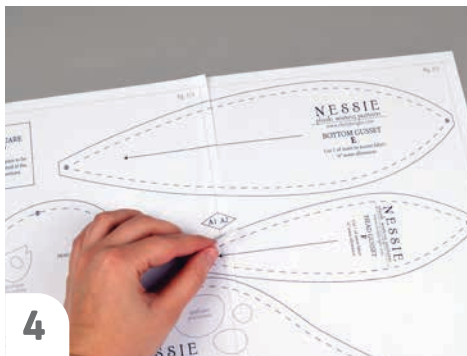
2

Print the pages needed for the file. You might have one or more. Either way, be sure you have the full collection by noting the page numbers in the corner.



3

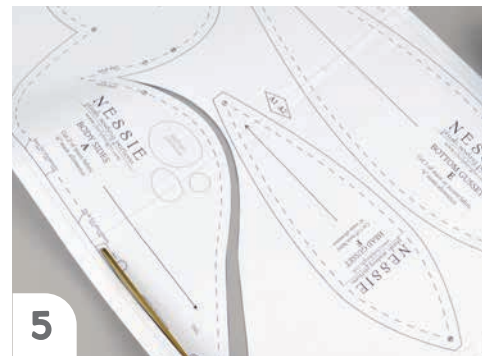
It's likely your printer will have a margin that ensures your image doesn't print to the very edge. Assembly will be easier if you trim off this blank margin edge. This will give you pages that overlap slightly during assembly. If you trim across the gray outline boxes, this will give you pages that don't overlap but rather butt against each other.



4

To line up the pattern pages, match up the corresponding diamond shapes. Each diamond will have a letter, so it's simply a matter of matching A1 to A2, B3 to B4 and so on. The faint gray lines indicate the border of every page, you should be able to line those up as well. When the diamond goes together, tape it in place.

If you have many pages, it's easier to tape up the pages into rows first. Then tape the rows together into a full block.



5

You can trace the patterns onto a different paper, or you can also just cut them straight from the printer paper -- be sure that each piece is fully taped together along the joins so they don't fall apart when you cut them.

sew desu ne?

| WWW.CHOLYKNIGHT.COM |

BEFORE YOU BEGIN:

- Briefly read the project instructions so you know what to expect.
- If desired, mark the cut fabric pieces with the markings and symbols from the pattern. Or wait until the applicable step before transferring.
- Note that a ¼" seam allowance is used throughout the project, which is included in the pattern templates.



Use the new applique templates on the **HEAD SIDE (B1)** to replace the eyes from the original **LONG NECK CUDDLE PLUSH** sewing pattern.

1. FUSE THE EYE APPLIQUE

- a.** Grab your fusible web and applique templates. Trace the pieces for the eyes. You should have:
- **eye whites** (2, white)
 - **eye shines** (2, white)
 - **irises** (2, green)
 - **pupils/eyelids** (2, black)
- b.** Fuse the bumpy (adhesive) side of the fusible web onto the applique fabrics.
- c.** Cut out your applique pieces and grab your **HEAD SIDE** piece (B1). Grab the **eye white** applique piece. Set your paper pattern on top of the head side piece. Align the applique piece on top where the placement markings are. Next, carefully pull the paper pattern away while holding the applique piece in place.

sew desu ne?

| WWW.CHOLYKNIGHT.COM |

2. BUILD THE EYE APPLIQUE



- a. Fuse the first applique layer with your iron. Use a press cloth, such as a scrap piece of cotton. This will help protect any polyester or fuzzy fabrics from melting or scorching.
- b. Add the **iris** pieces next. Use the paper pattern and photos as a placement guide.
- c. Lastly add the **pupils/eyelids**, and **eye shins** to complete the eyes.

If you used heavy duty fusible web, you can keep the pieces fused without sewing, or you can sew them in place a number of ways. I've used a zigzag stitch here.

→ Refer to page 10 for some other applique options.

3. APPLIQUE THE NOSE

→ Also take this time to applique the nose bridge and nose.

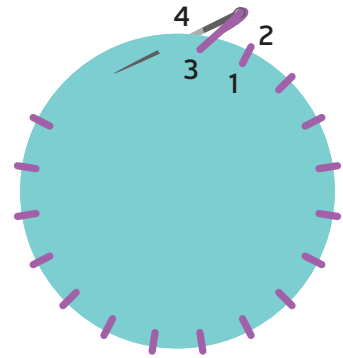
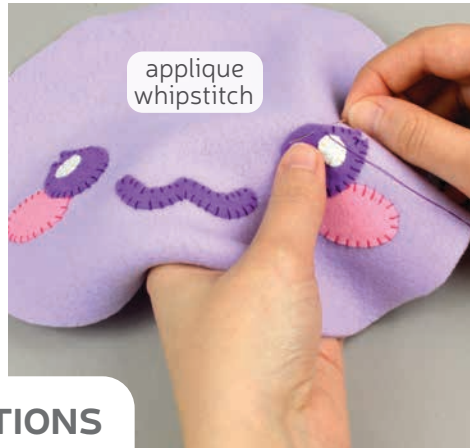
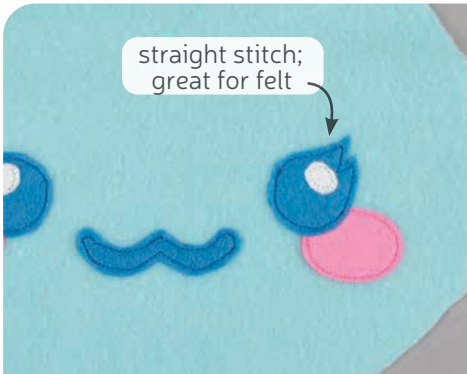
- a. The **LOWER FOREHEAD** (H9b) piece also gets applique: the **nose bridge (1, gray)** and **nose (1, pink)**.

Follow the same steps as before, tracing the design and fusing it to your main fabrics.



sew desu ne?

| WWW.CHOLYKNIGHT.COM |



4. OTHER APPLIQUE OPTIONS

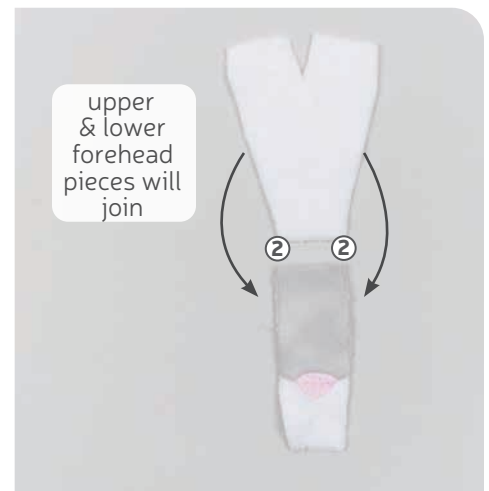
- Other options for applique include a straight stitch. That's done by sewing around the edge of the applique pieces with a straight stitch using matching thread -- about 1/8" in from the edge.
- You can also applique by hand using a whipstitch. Thread a hand-sewing needle with some matching thread and knot it. Bring the thread up from the back of the project; about 1/8" in from the edge of the applique shape. Bring it down perpendicular from the curve, just outside of the applique shape. This completes one stitch.
- For the next stitch, bring the needle back up about 1/8" away from the previous stitch and 1/8" in from the edge just as in the first stitch. Once again, bring it down just outside the applique shape. Continue this way until you've sewn around the shape.



Haku has a new **FOREHEAD** piece (H9a & H9b). We need to assemble those first before they can be used in the regular instructions.

5. GRAB THE FOREHEAD PIECES

- Grab your **UPPER** and **LOWER FOREHEAD** pieces (H9a & H9b). These pieces will join together next to create the full forehead piece. They're joined along the nose bridge edge, but you can also look for the **numbered points** for help with alignment. Look for **point 2** on each side.



sew desu ne?

| WWW.CHOLYKNIGHT.COM |



6. ATTACH THE FOREHEAD PIECES

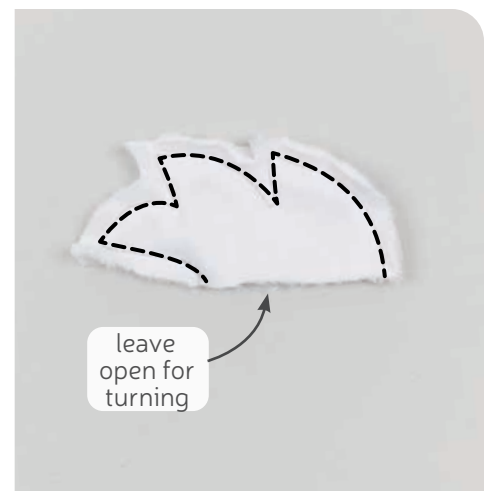
- Grab your **UPPER FOREHEAD** (H9a) and align it with your **LOWER FOREHEAD** (H9b) so right sides are facing and **point 2** matches up on each side. Pin the fabrics together.
- Sew the pieces together along the edge with **point 2**.
- Open up the pieces when complete, and now you can treat this like the full forehead piece from the original pattern instructions.



Refer to **steps 8-12** from the original **LONG NECK CUDDLE PLUSH PATTERN** to attach the **FOREHEAD** (H9) and **HEAD BOTTOM** (B10). Stop before you reach the **HEAD SPIKES** (step 13). That part is sewn a little differently.

7. SEW THE HEAD FUR

- Steps 8-10:** Attach the **HEAD SIDES** (B1) to the **FOREHEAD** (H9).
- Steps 11-12:** Attach the **HEAD BOTTOM** (B10).
- Grab your **HEAD FUR** pieces (B16). Sew these similarly to the **HEAD SPIKES** from **step 13** of the original pattern. Align two of them and sew them together along the pointed edge, but leave the straight edge free.
- Also follow **steps 13-14** to sew your **EARS** (B11) following the regular instructions from the original plush pattern.



sew desu ne?

| WWW.CHOLYKNIGHT.COM |



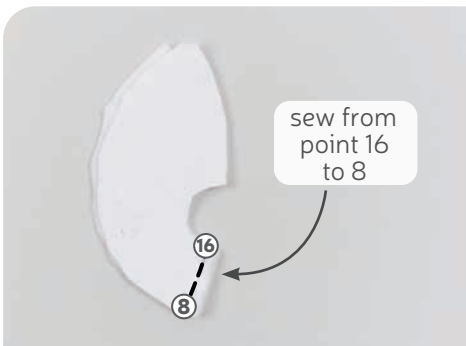
Refer to **step 15** from the original **LONG NECK CUDDLE PLUSH PATTERN** to attach the **EARS** (B11) and **HEAD FUR** (B16). The placement is a little different, so see below for more details.

8. BASTE THE EARS & HEAD FUR

- Grab your sewn **EARS** (B11), **HEAD FUR** (B16), and your head front so far. Baste the ears to the head side about $\frac{1}{2}$ " down from the **forehead seam**. Then baste the head fur right beneath it. They should be placed right next to each other on the side of the head as shown.
- Repeat this with your other ear and head fur on the other side.



The following steps 9-12 are similar to **step 16** from the original pattern, but with some adjustments to accommodate Haku's **UPPER HEAD FUR** (H14).



9. ALIGN THE HEAD BACK

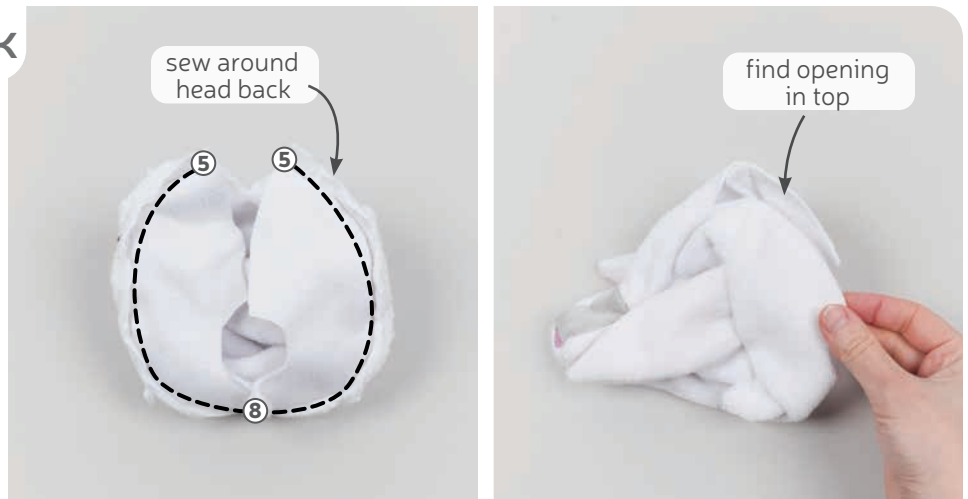
- Grab your **HEAD BACK** pieces (B2). Sew them together along just the bottom back edge (beneath the **neck opening**). If you're watching the **numbered points**, that should be from **point 16 to 8**.
- Next grab your head front so far and tuck in the nose so you can see the edge all the way around.
- Grab your head back and align it to the head front. We'll be sewing the head back to the front (similar to step 16 from the original pattern). However there will be an opening at the top for Haku's **UPPER HEAD FUR** (H14). **Point 5** will match up at the top corners and **point 8** will match up at the center bottom. Align the fabrics all the way around, make sure right sides are facing, and pin them in place.

sew desu ne?

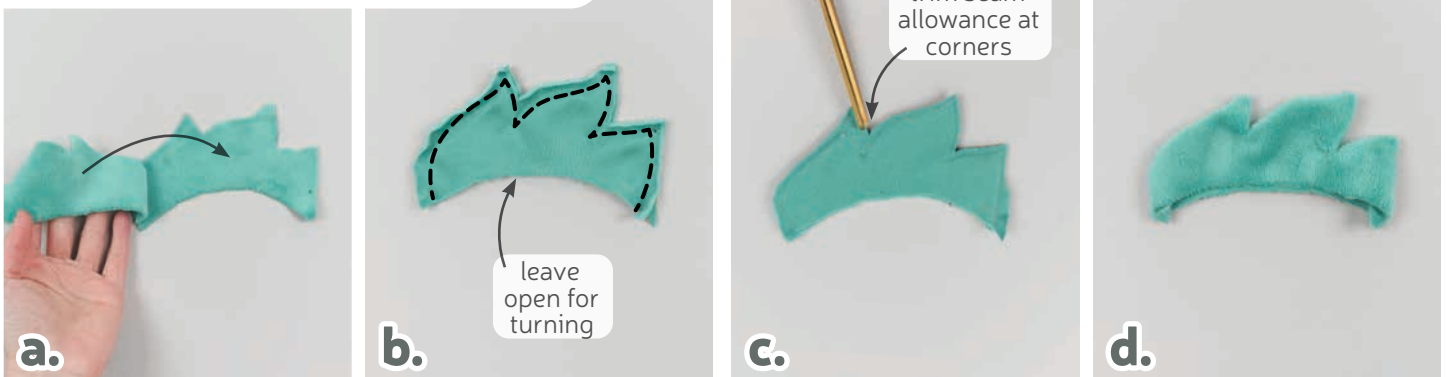
| WWW.CHOLYKNIGHT.COM |

10. SEW THE HEAD BACK

- Sew the head back to the front from **point 5** at the top, through **point 8** at the center bottom, and back around to **point 5** at the other side.
- Turn the head right side out, and now you should find a big opening at the top. We'll be using this for Haku's **UPPER HEAD FUR** (H14).



11. SEW THE UPPER HEAD FUR



- Grab your **UPPER HEAD FUR** pieces (H14). Align them with right sides facing and the raw edges matching up. Pin the fabrics together.
- Sew the pieces together along the pointed edge. Leave the lower curved edge free for turning the piece right side out.
- Trim the excess seam allowance at the tight corners and curves. This will reduce bulk and increase flexibility in those areas so the piece turns more cleanly.
- Turn the piece right side out and define the points with a chopstick or similar turning tool.

sew desu ne?

| WWW.CHOLYKNIGHT.COM |



12. BASTE THE UPPER HEAD FUR

- If you haven't already, note the **dart clipping line** found on the paper pattern for the **UPPER FOREHEAD** (H9a). This will open up the center top of the forehead so there's more room for the **UPPER HEAD FUR** (H14). Clip along this line to create more room for the head fur.
- Grab your head fur piece and align it along the top and back of the head. Line up one corner at the **forehead clip**, then align the raw edge around the top of the head. The fur should reach the back of the head (close to **point 15**). Pin the fabrics together along this edge.
- Baste the head fur to the top and back of the head within the seam allowance. This will hold it in place while we finish sewing the head.



13. SEW THE HEAD TOP & BACK

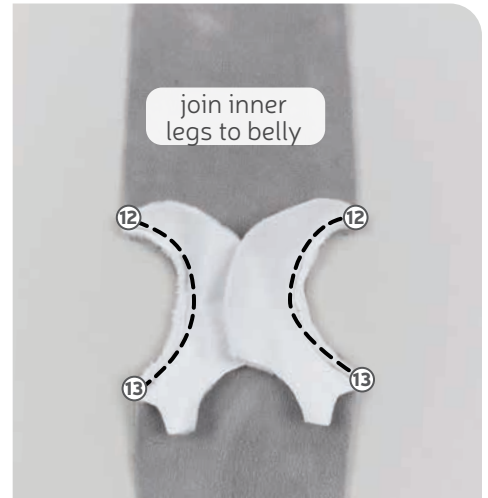
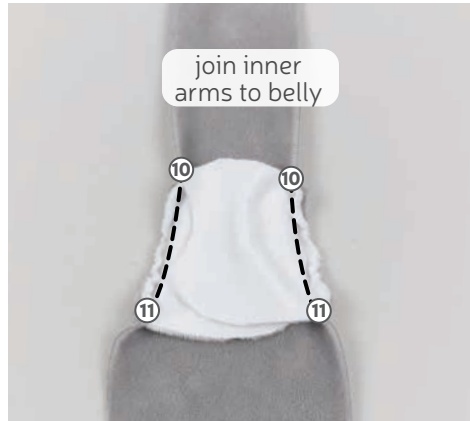
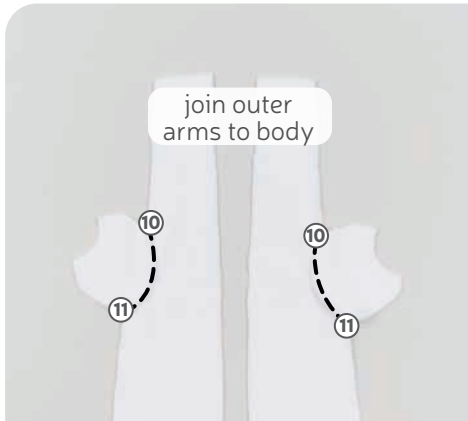
- Flip the head wrong side out and line up the top and back edges of the head so right sides are facing and the **UPPER HEAD FUR** (H14) is sandwiched between the layers. Pin the fabrics together.
- Sew the top and back of the head starting at **point 15** at the back of the head and going up and around to the point of the **dart** on the **UPPER FOREHEAD** (H9a). Sew into the fold of the fabric and try to blend your stitching into the fold for a smooth transition. Make sure your upper head fur is secured between the layers.
- Turn the head right side out, and the upper head fur should be secured in the seam.

sew desu ne?

| WWW.CHOLYKNIGHT.COM |



The following step 14 is similar to **steps 18 & 24-26** from the original pattern, but will look different for Haku's new **OUTER FRONT ARM** (H5a), **INNER FRONT ARM** (H5b), and **INNER BACK LEG** (H6).

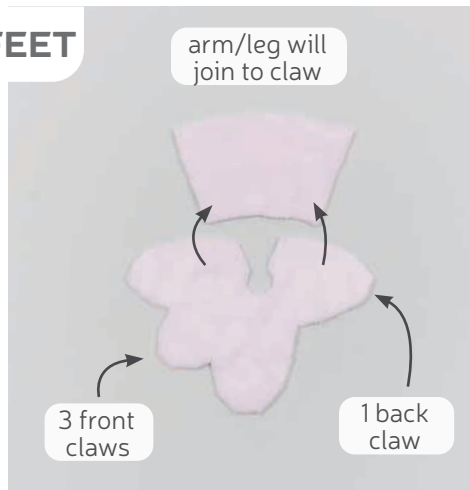


14. ATTACH THE INNER & OUTER LEGS & ARMS

- Refer to step 18 from the original pattern to attach the new **OUTER FRONT ARM** (H5a) to the **BODY BACK** (B3). This should join the arms from **point 10 to 11**.
- Refer to step 24 from the original pattern to attach the new **INNER FRONT ARM** (H5b) to the **BELLY** (B4). This should join the arms from **point 10 to 11**.
- Refer to step 25 from the original pattern to attach the new **INNER BACK LEGS** (H6) to the **BELLY** (B4). This should join the legs from **point 12 to 13**.

15. PREP THE CLAWED FEET

- Instead of paws, Haku has clawed feet. It's good to note for later that he has 3 front claws and one back claw on each foot. Grab your **UPPER CLAWS** (H8b) and your **CLAW ARM/LEG** pieces (H8a). The tight inner curve of the upper claw will join to the shorter inner curve of the arm/leg. But you can also refer to the **numbered points** for help with alignment. Look for **points 20 and 21**.



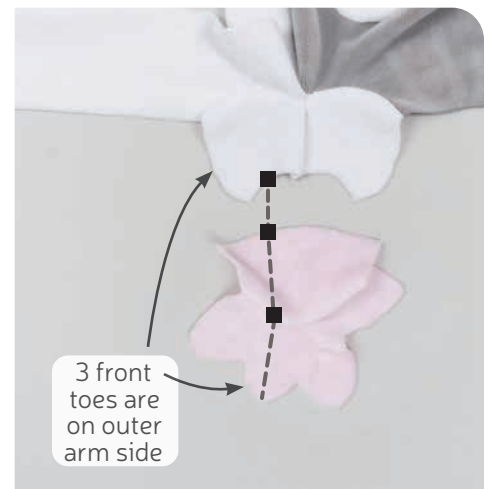
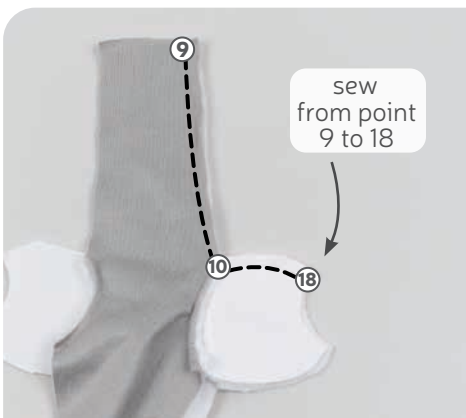
- Because the inner curve of the claw is so tight, it helps to make small clips into the seam allowance. Make $\frac{1}{8}$ " clips into the fabric spaced about $\frac{1}{4}$ " apart from **point 20 to 21**.

sew desu ne?

| WWW.CHOLYKNIGHT.COM |

16. SEW THE CLAWED FEET

- Grab your **UPPER CLAW** piece (H8b) and stretch out the inner curve so it fits along the curve from the **ARM/LEG** (H8a). Make sure right sides are facing and match up **points 20 and 21** along this edge.
- Sew the claw to the arm/leg from **point 20 to 21**. Then repeat this 3 times more for all of your claws. You should have 2 mirrored pairs.

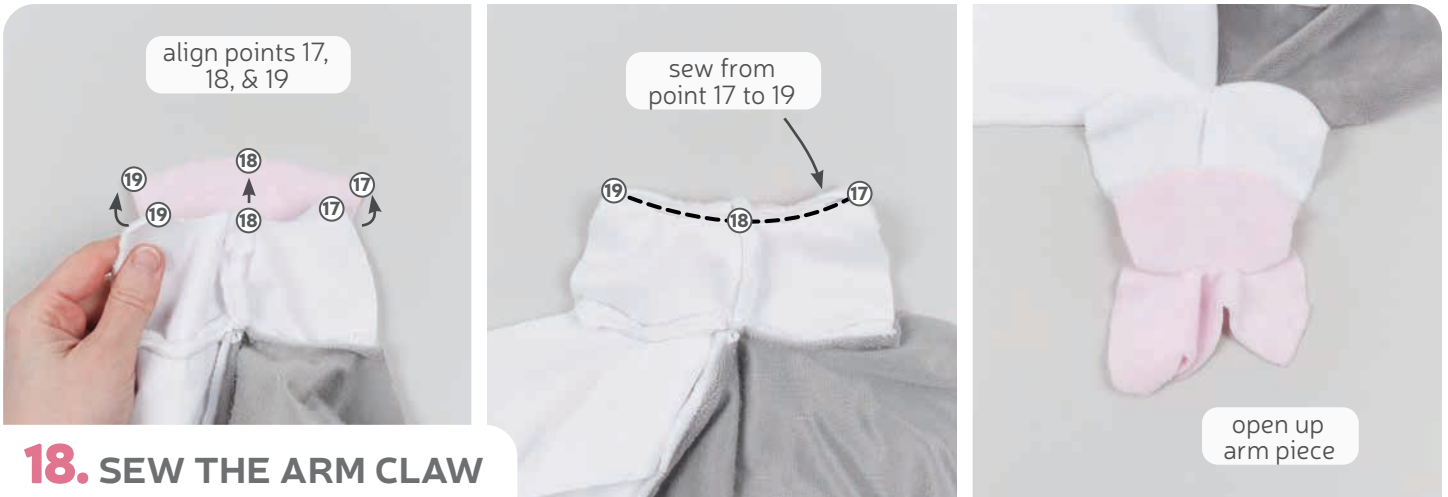


17. ALIGN THE ARM CLAW

- To attach the arm claws, we'll take pauses during assembly of the belly and body. Follow **step 30** from the original pattern sew from **point 9** down to **point 10**. Then sew down just one side of the arm from **point 10 to point 18**.
- Take your sewn arm and open it up along this edge that you've sewn from **point 10 to 18**.
- Lay your body out flat so the arm is completely flat and you'll find the inner curve it makes. This inner curve will join to the top of your **ARM/LEG** (H8a). This should match up **points 17, 18, and 19**.
 - **TIP:** to make extra sure the toes are pointing in the correct direction, imagine a straight line going from the **OUTER ARM**, down the **CLAW ARM**, and then ending at the **MIDDLE TOE** of the claw. The pattern templates also have this line, and they're marked with **square markings** going from one piece to the next.

sew desu ne?

| WWW.CHOLYKNIGHT.COM |



18. SEW THE ARM CLAW

- Flip over your body so now right sides are facing with the claw arm. Align the inner curve of the arm with the claw so **points 17, 18, and 19** match up. Pin the fabrics together along this edge.
- Sew the arm to the claw from **point 17 to 18 to 19**.
- Open up the pieces when complete, and the 3 front toes should be on the side with the outer arm.



19. SEW THE OTHER ARM SIDE

- To sew the other side of the arm, fold your body so the arm fabrics match up again with right sides facing. This should match the **open square marking** at the corner of the claw. Then align point to **20 to 21** at the claw seam, and align **point 17 to 19** at the arm seam. Lastly the outer and inner arm will line back up at **point 11**.
- Sew the side of the claw arm going from the **square marking** through **point 20/21** and then to **point 17/19**. Finally finish at **point 11** before the belly.

TIP:

If this construction feels a bit too fiddly for you, you can also attach the claws separately.

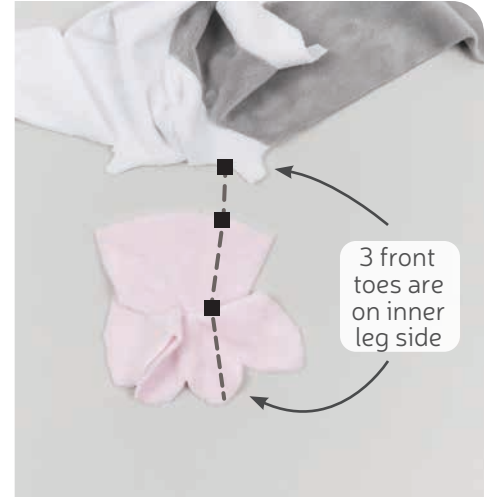
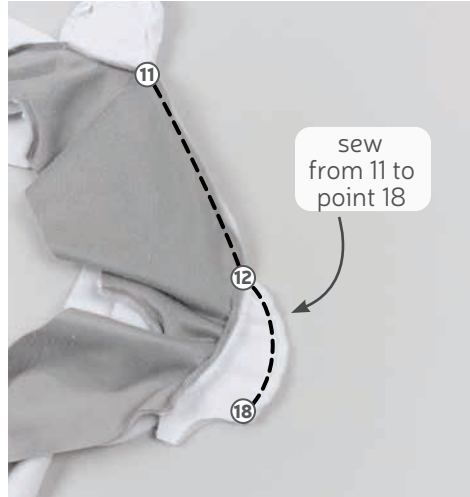
Assemble the claws on their own, then leave the ends of the arms and legs open. Later you can attach the claws to these openings by hand so you can adjust the position of the toes however you like.

sew desu ne?

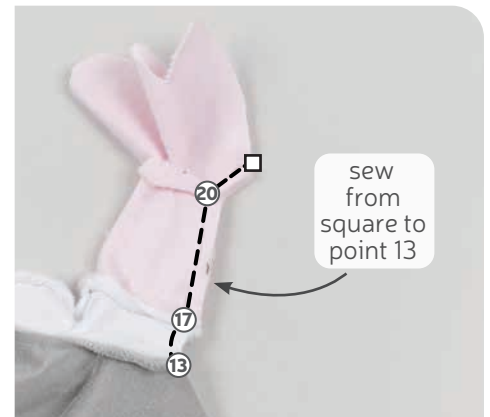
| WWW.CHOLYKNIGHT.COM |

20. SEW THE BACK LEG

- Follow steps 32-33 from the original pattern to sew the belly from **point 11** down to **point 12**. Then sew down one side of the leg from **point 12 to point 18**.
- Repeat the same process as in step 17. Lay your body out so the leg is flat and you'll find the inner curve it makes. This inner curve will join to the top of your **ARM/LEG** (H8a). This should match up **points 17, 18, and 19**.



→ **TIP:** to make extra sure the toes are pointing in the correct direction, imagine a straight line going from the **INNER LEG**, down the **CLAW LEG**, and then ending at the **MIDDLE TOE** of the claw. The pattern templates also have this line, and they're marked with **square markings** going from one piece to the next.



21. ATTACH THE BACK CLAW

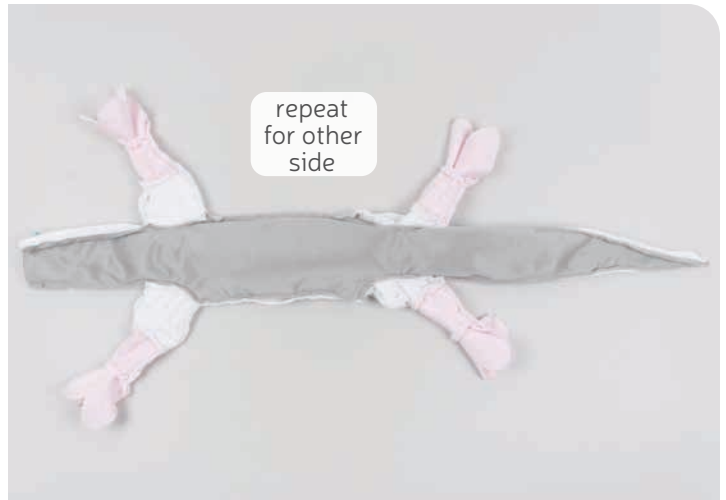
- Flip over your body so far so now the right side of the leg is facing the claw leg. Align the inner edge of the leg with the claw so **points 17, 18, and 19** match up. Pin the fabrics together along this edge. Sew the leg to the claw from **point 17 to 18 to 19**.
- Open up the pieces when complete, and the 3 front toes should be on the side with the inner leg (H6). To sew the other side of the leg, fold your body so the leg fabrics match up again with right sides facing. This should match the **open square marking** at the corner of the claw. Then align point to **20 to 21** at the claw seam, and align **point 17 to 19** at the leg seam. Lastly the outer and inner leg will line back up at **point 13**.
- Sew the side of the claw arm going from the **square marking** through **point 20/21** and then to **point 17/19**. Finally finish at **point 13** before the tail.

sew desu ne?

| WWW.CHOLYKNIGHT.COM |

22. REPEAT FOR THE OTHER SIDE

- Follow **steps 34-35** from the original pattern to complete sewing the tail.
- Then repeat steps 17-21 (from these instructions) once more for the other side of the body and belly. This should attach all four claws for the arms and legs. The bottoms of the claws are left open, which are attached next.



23. ATTACH THE CLAW BOTTOMS

- Grab one of your sewn **CLAWS** and also grab your **CLAW BOTTOM** piece (H8c). Align the **UPPER CLAW** (H8b) with the claw bottom so right sides facing and the raw edges match up. This should also align the front middle toe at the **filled circle marking**. The middle back toe will align at the **open circle marking**.
- Sew the pieces together all the way around. Then repeat this three more times so all four of your claws have bottoms attached.



sew desu ne?

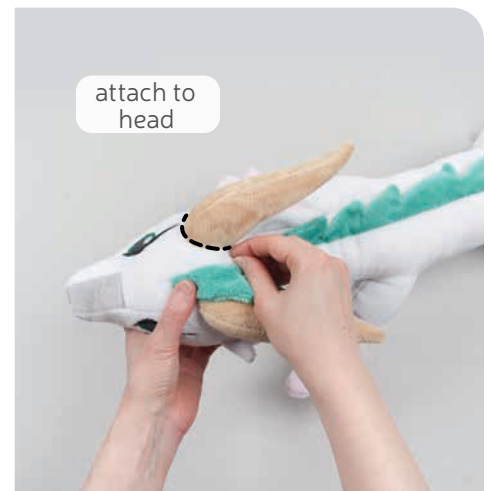
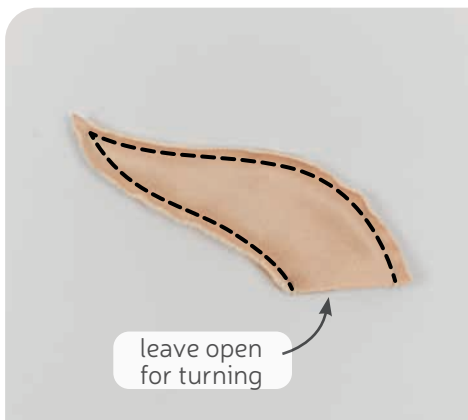
| WWW.CHOLYKNIGHT.COM |



Refer to **steps 37-39**, then **43-48** from the original **LONG NECK CUDDLE PLUSH PATTERN** to complete the body and attach the head. See below for more details

24. COMPLETE THE BODY

- a. **Steps 37-38:** Sew and attach the **BODY SPIKES** (B3).
- b. **Step 39:** Sew the body back.
- c. **Steps 43-46:** Clip, turn, and stuff the body and head.
- d. **Steps 47-48:** Attach the head.



25. SEW & ATTACH THE HORNS

- a. Follow **steps 50-52** from the original pattern to sew and attach the **HORNS** (H13). The process is the same but the pattern piece is different for Haku.
Take two of your horns and align them with right sides facing and the raw edges matching up. Sew the pieces together along the long pointed edge but leave the straight edge free.
- b. Trim the seam allowance at the tip and turn the horns right side out.
- c. Stuff the horns, then use a gathering stitch to cinch them closed.
Align the horns beside the **EARS** (B3) but a little further up on the forehead area. Ladder stitch both horns to the head around the base.

sew desu ne?

| WWW.CHOLYKNIGHT.COM |



26. SEW & ATTACH THE WHISKERS

- Follow **step 54** from the original pattern to sew and attach the **WHISKERS** (H15). The process is the same but the pattern piece is different for Haku.
Take two of your whiskers and align them with right sides facing and the raw edges matching up. Sew the pieces together along the long curved edge but leave the straight edge free.
- Trim the seam allowance at the tip and turn the whiskers right side out.
- Use a gathering stitch to cinch them closed.
Align the whiskers beside the nose, then ladder stitch both whiskers around the base.

27. ATTACH THE TAIL FUR

- Complete the last steps for the **EASTERN DRAGON**, which is attaching the **TAIL FUR** (B12). This covers **steps 55-56** of the original instructions.
- Sew the tail fur pieces together, leaving an **opening for turning**. Turn the tail right side out and define the points with a chopstick or similar turning tool.
- Wrap it around the tip of the tail, then ladder stitch it to the tail from both sides.



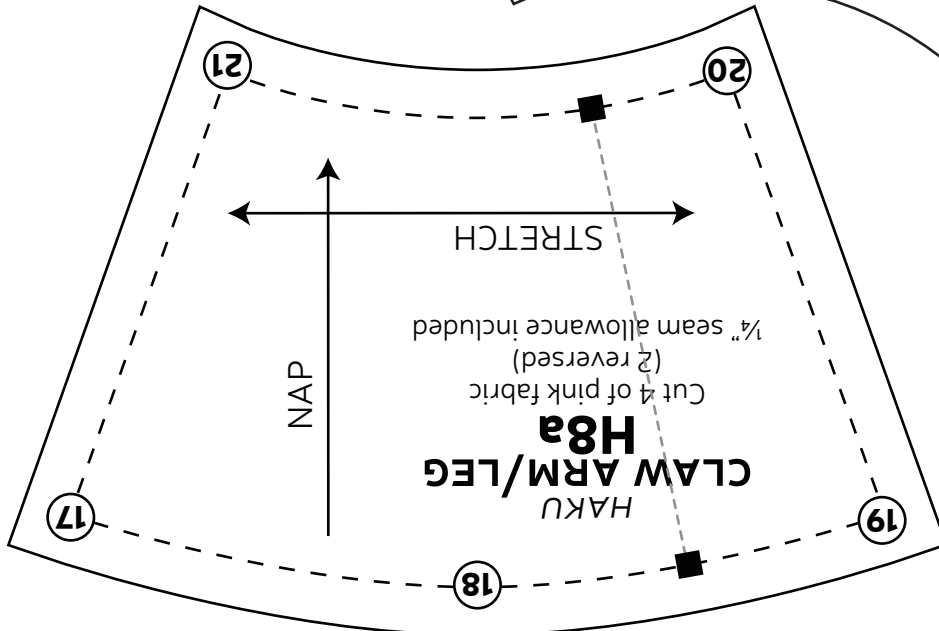
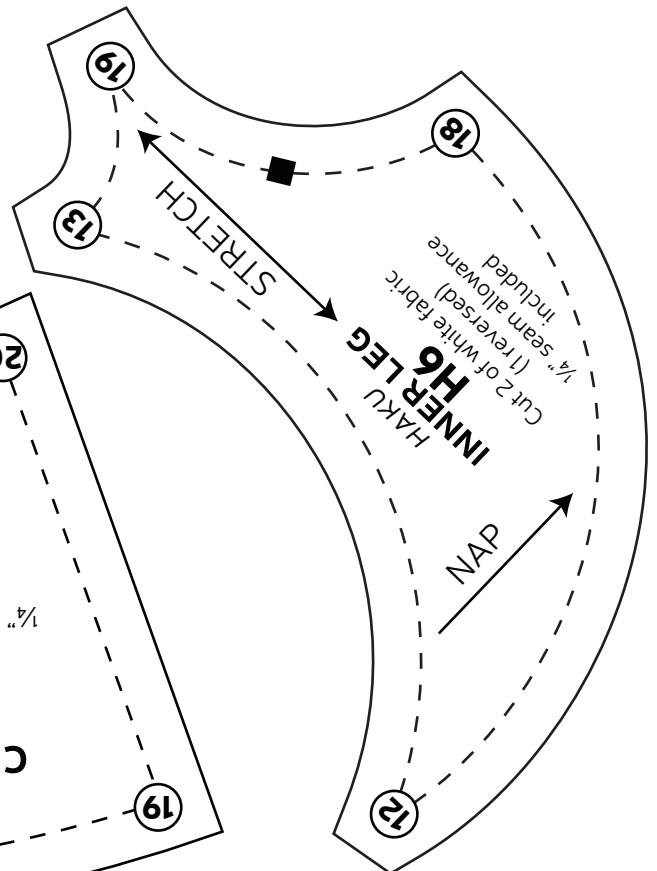
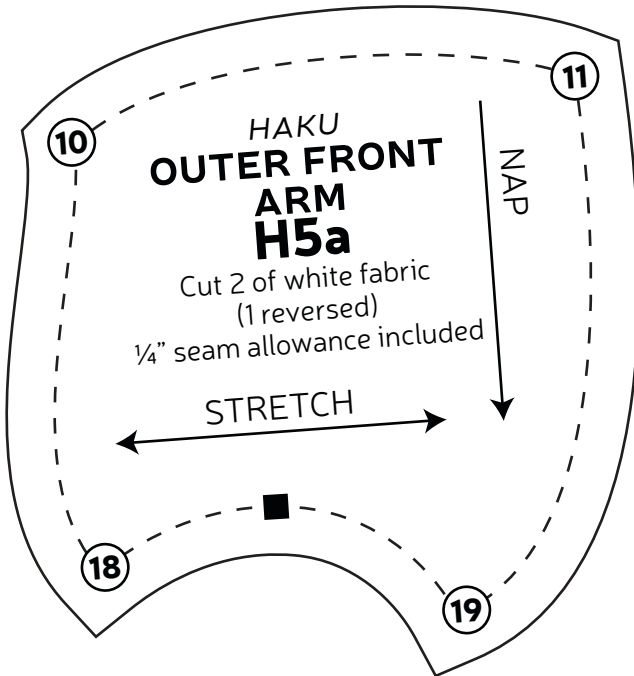
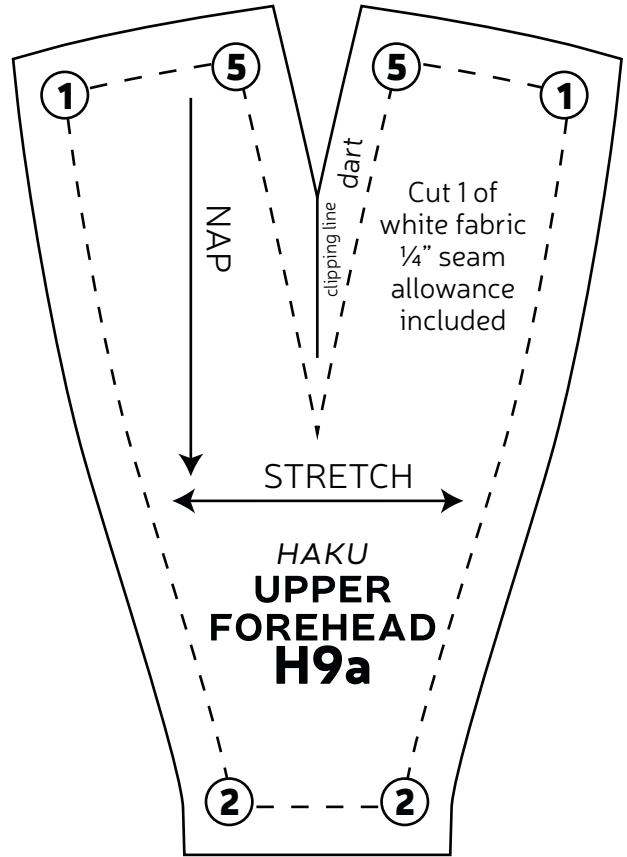
sew desu ne?

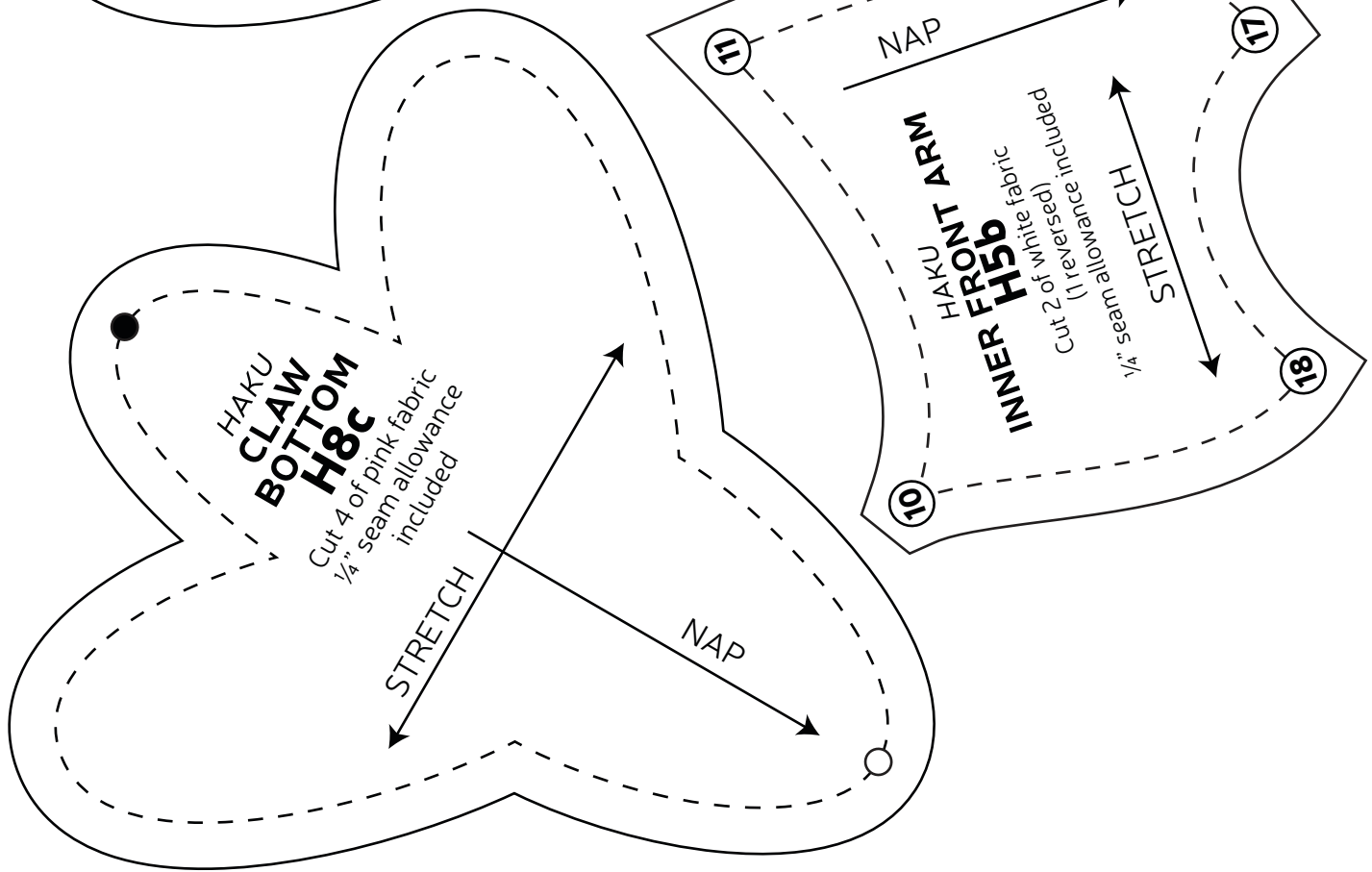
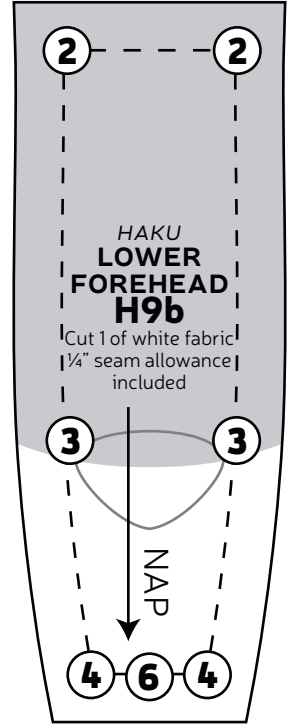
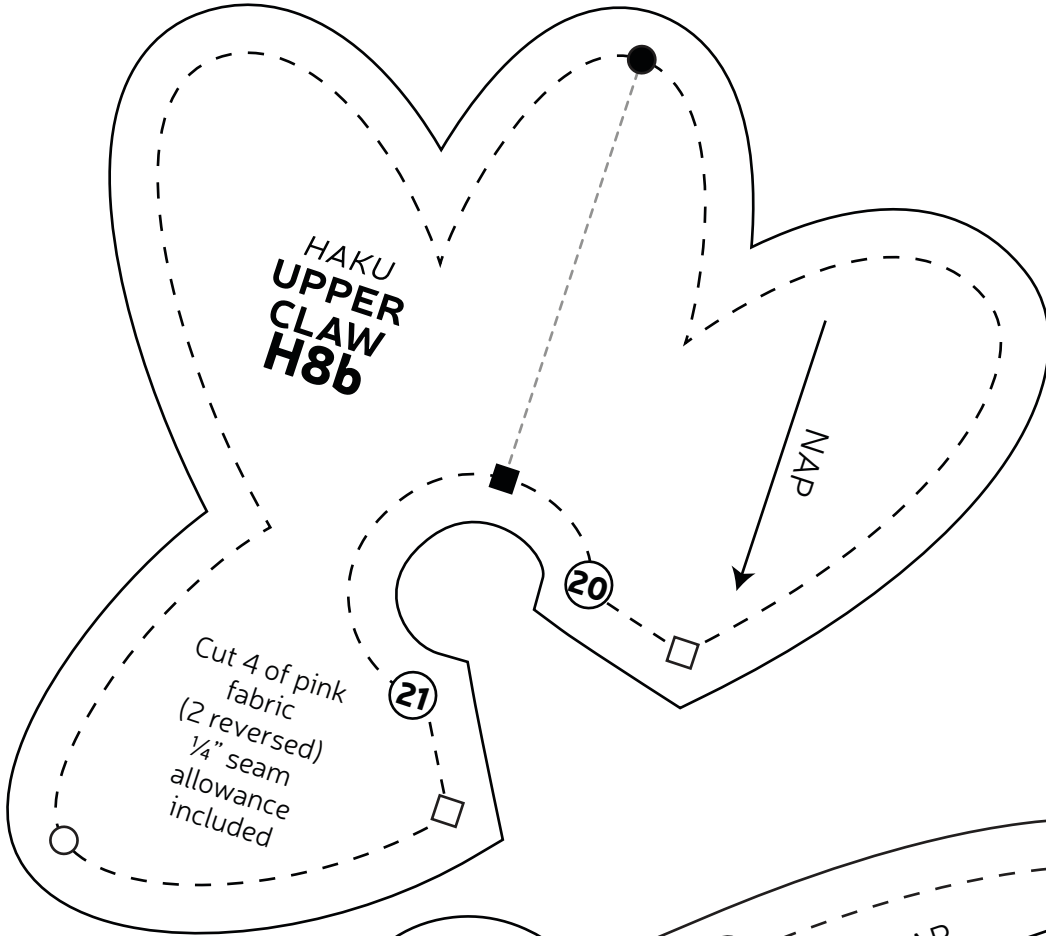
| WWW.CHOLYKNIGHT.COM |

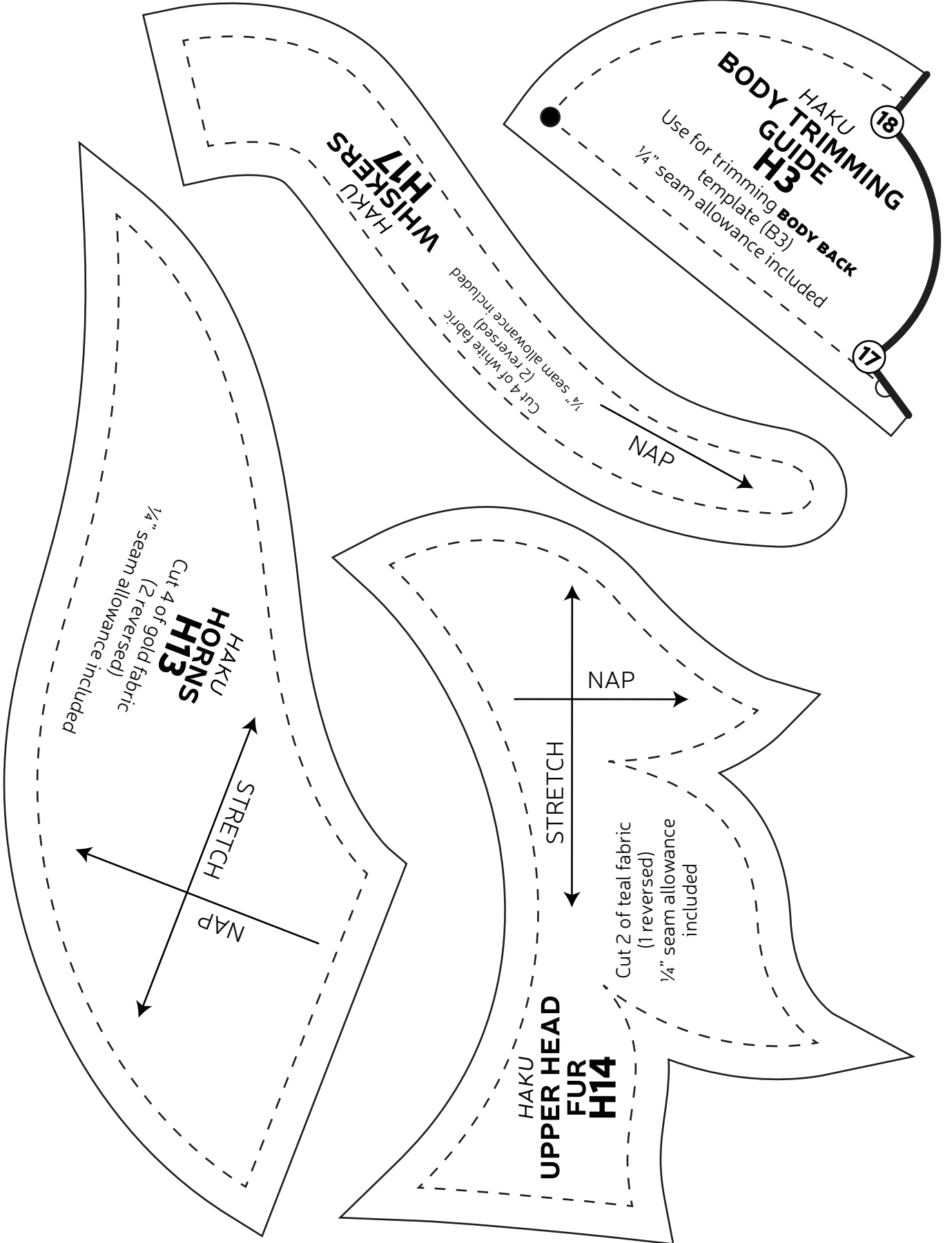
TEST SQUARE

2"

measure this square to be sure you've printed at the proper proportions

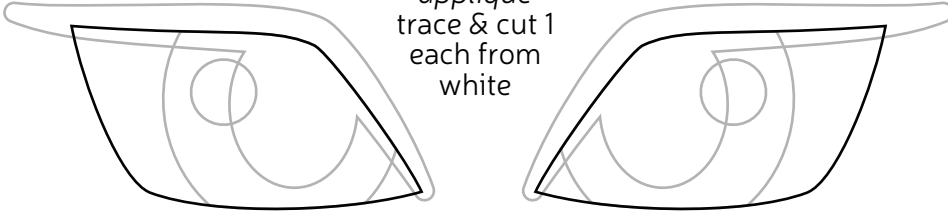






EYE WHITE

applique
trace & cut 1
each from
white



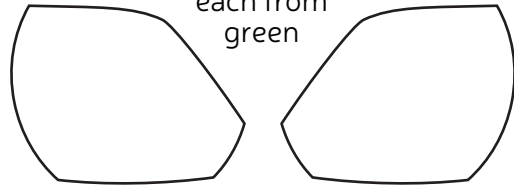
EYE SHINE

applique
trace & cut 2
from white



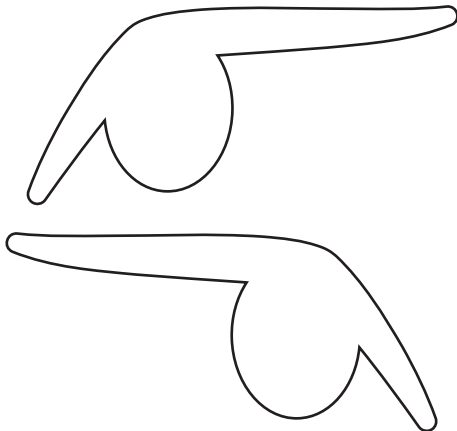
IRIS

applique
trace & cut 1
each from
green



PUPIL/EYELID

applique
trace & cut 1 each
from black



NOSE

applique
trace & cut 1
from pink



**NOSE
BRIDGE**
applique
trace & cut 1
from gray

