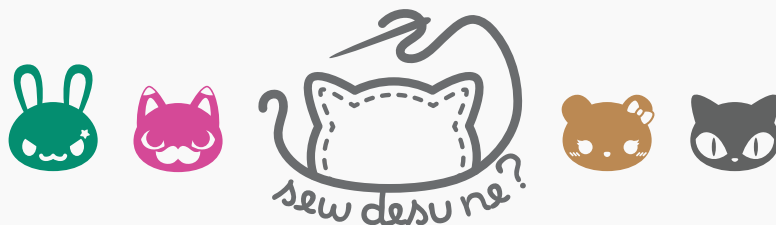


# HAKU

## plush



a free sewing pattern by



# HAKU PLUSH

Fans of Spirited Away should recognize this majestic river spirit! In the animated film, Haku helps the main character Chihiro through her experience at the spirit bathhouse and she in turn helps him remember his true identity. This pattern will take you through making a tiny and cute version of Haku that still has his long body shape similar to other Eastern style dragons. He has a tiny snout, whiskers, little paws, long ears, and elegant horns.

## MAKES:

### ONE PLUSH:

About 4" wide from each side of head, 4" tall from belly to top of head (not including horns), and 18" long from tip of nose to tip of tail.

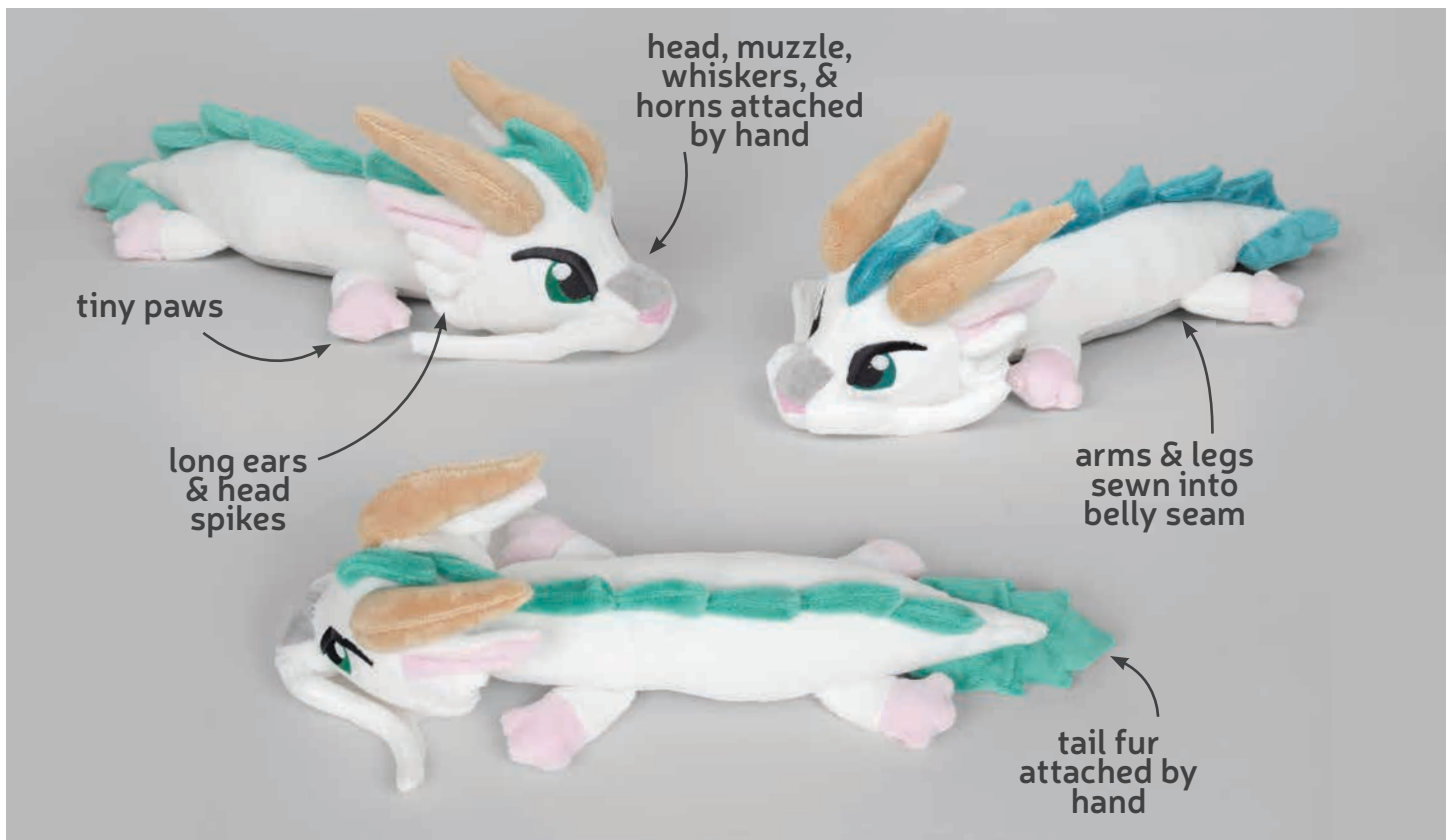
## DIFFICULTY:



The hardest part of this plush is likely lining up the long body pieces, but there is also a lot of hand sewing for all of Haku's little details. Give yourself plenty of time for attaching all the tiny bits.

## SKILLS USED:

- Fusible web applique
- Curved sewing
- Ladder stitch
- Sewing small pieces
- Basting
- Darts
- Gathering; gathering stitch



**sew desu ne?**

| [WWW.CHOLYKNIGHT.COM](http://WWW.CHOLYKNIGHT.COM) |

## MATERIALS & TOOLS:

- ½ yd. (or 24" x 18" a.k.a. one fat quarter) of white fabric for main body
  - 4" x 16" of light gray fabric for belly and nose bridge (or one fat quarter if buying new fabric)
  - ¼ yd. (or 20" x 8") of teal fabric for fur
  - ⅛ yd. of tan fabric for horns
  - ⅛ yd. of pink fabric for inner ears and paws
  - sewing thread to match main fabric and applique fabrics
  - poly-fil stuffing
  - basic sewing tools (sewing machine, scissors, iron, needles, pins, fabric marker, seam ripper)
- **APPLIQUE SUPPLIES:**
    - 3" x 3" of white applique fabric for eye whites and eye shines
    - 3" x 3" of green applique fabric for irises
    - 3" x 3" of black applique fabric for pupils and eyelids
    - 2" x 2" of pink applique fabric for nose
    - 5" x 5" of light or heavy duty fusible web

## FUSIBLE WEB:

- Fusible web adhesive is a sheet of adhesive with a paper backing.  
**Not to be confused with fusible interfacing**, which is adhesive attached to a fabric/fiber backing.
- Some common brands are **Pellon** & **HeatnBond**
- In countries outside the US, it may also be known as **bondaweb**
- It comes in **light** and **heavy duty** varieties. Lightweight strength is meant for applique you intend to sew later. Heavy duty versions are for a no-sew bond. If you try to sew them later your machine might have trouble penetrating the glue.



## APPLIQUE FABRICS:

- Good applique fabrics include **flannel**, **cotton**, **felt**, **minky**, and **fleece**.
- Flannel and cotton are best for detailed applique with a lot of layers because they're thinner. Meanwhile felt, minky, and fleece are better for simpler applique like body markings.
- **Flannel** is used in the example instructions (page 7).



sew desu ne?

| WWW.CHOLYKNIGHT.COM |

**fabric comparison:**



**SUGGESTED BODY FABRICS:**

**MINKY OR FLEECE**

Medium weight, plush fabrics with about 20%-30% stretch along the crosswise grain work best for this project. The varieties shown to the left are some good options and names to look for. Try to avoid heavyweight versions of fleece that are intended for outdoor apparel or they may cause trouble for the detailed areas.

You can also use non-stretch fabrics (such as felt), but be aware that the curves will be more difficult to sew and the result will look different. The plush will become more elongated and the edges will look sharper.

10" of minky stretches to 13" = 30% stretch

**MINKY VS. FELT**



**sew desu ne?**

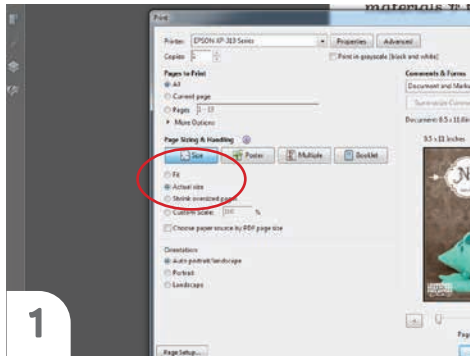
| [WWW.CHOLYKNIGHT.COM](http://WWW.CHOLYKNIGHT.COM) |

## PRINTING THE PATTERN:

Set your computer to print  
**PAGES 27-31**

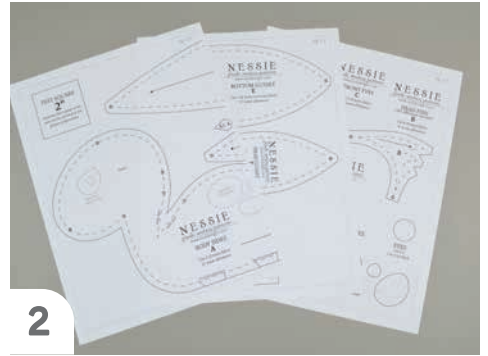
If you're unfamiliar with printing and assembling a .pdf pattern, read the steps to follow.

For the best results, use a .pdf reader like **ADOBE READER**. That's what is shown here and will give you the most control over the settings.



1

At the print dialog box, check the box that says print at "Actual Size" or 100%. Any other selection (such as "Fit to page") will distort the pattern so it's slightly larger or smaller and we don't want that.



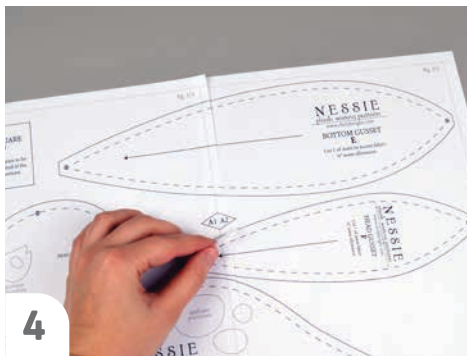
2

Print the pages needed for the file. You might have one or more. Either way, be sure you have the full collection by noting the page numbers in the corner.



3

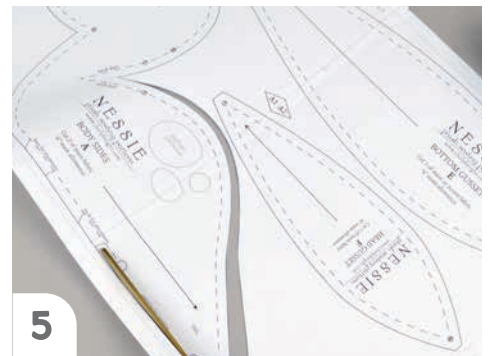
It's likely your printer will have a margin that ensures your image doesn't print to the very edge. Assembly will be easier if you trim off this blank margin edge. This will give you pages that overlap slightly during assembly. If you trim across the gray outline boxes, this will give you pages that don't overlap but rather butt against each other.



4

To line up the pattern pages, match up the corresponding diamond shapes. Each diamond will have a letter, so it's simply a matter of matching A1 to A2, B3 to B4 and so on. The faint gray lines indicate the border of every page, you should be able to line those up as well. When the diamond goes together, tape it in place.

If you have many pages, it's easier to tape up the pages into rows first. Then tape the rows together into a full block.



5

You can trace the patterns onto a different paper, or you can also just cut them straight from the printer paper -- be sure that each piece is fully taped together along the joins so they don't fall apart when you cut them.

**sew desu ne?**

| [WWW.CHOLYKNIGHT.COM](http://WWW.CHOLYKNIGHT.COM) |

## CUTTING THE FABRIC:



1

Place pattern on the fabric, and make sure the stretch line matches the stretch of the fabric. The nap line should go in the direction of the fur.

2

Pin the pattern in place, use pattern weights, or trace the outline of the pattern with a washable marker.

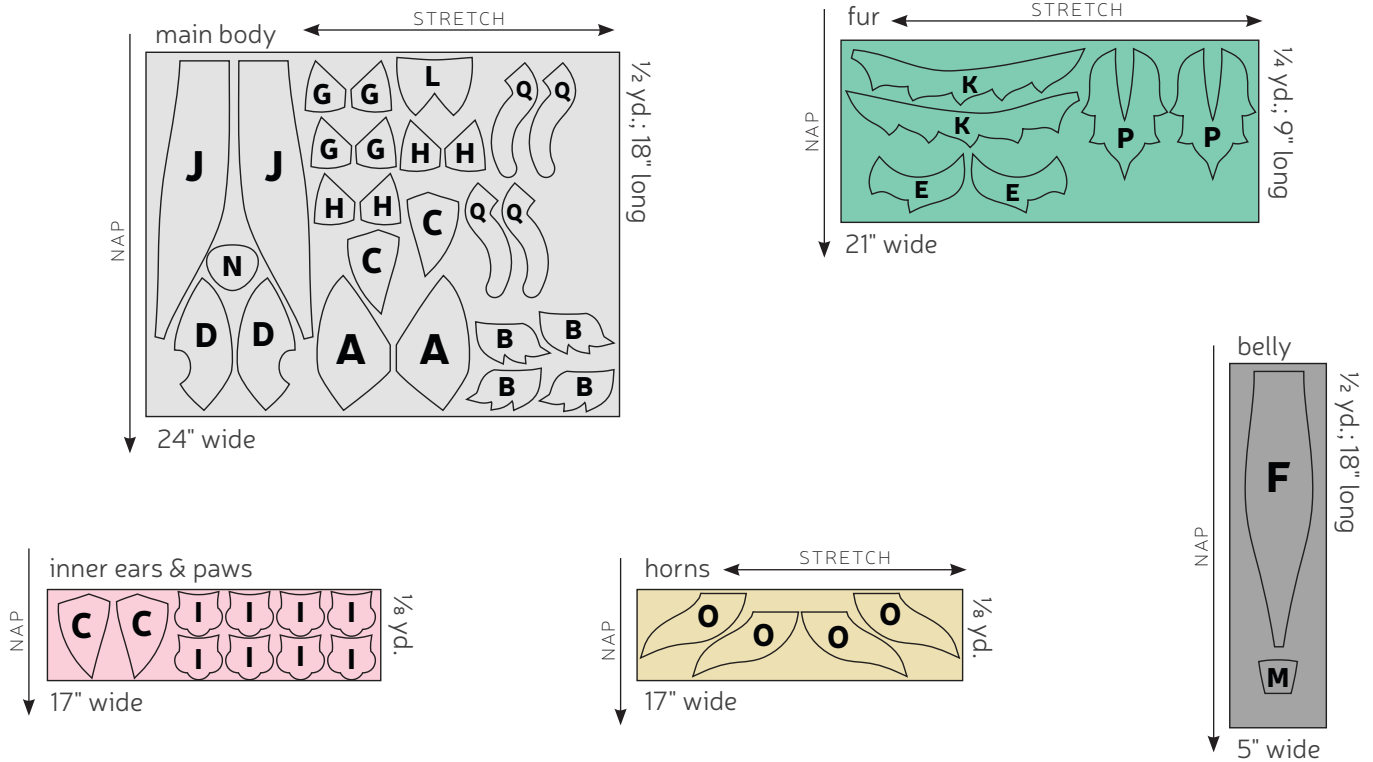
3

Using the paper as a template, cut out the fabric. Cut the required amount according to the pattern.

4

For all fur fabrics, shake the excess fuzz away.

## CUTTING LAYOUT:



sew desu ne?

| [WWW.CHOLYKNIGHT.COM](http://WWW.CHOLYKNIGHT.COM) |

## BEFORE YOU BEGIN:

- Briefly read the project instructions so you know what to expect.
- If desired, mark the cut fabric pieces with the markings and symbols from the pattern. Or wait until the applicable step before transferring.
- Note that a ¼" seam allowance is used for the project unless otherwise mentioned. The seam allowance is included in the pattern templates.

### 1. FUSE THE EYE APPLIQUE



- Grab your fusible web and applique templates. Trace the pieces for the **eyes**. You should have:
  - **eye whites** (2, white)
  - **irises** (2, green)
  - **pupils/eyelids** (2, black)
  - **eye shines** (2, white)
- Fuse the bumpy (adhesive) side of the fusible web onto the applique fabrics.
- Cut out your applique pieces and grab one of your **HEAD SIDE** pieces (A). Grab the **eye white** applique piece. Set your paper pattern on top of the head side piece. Align the applique piece on top where the placement markings are. Next, carefully pull the paper pattern away while holding the applique piece in place.
- Fuse the applique pieces with your iron. Use a press cloth, such as a scrap piece of cotton. This will help protect any polyester or fuzzy fabrics from melting or scorching.

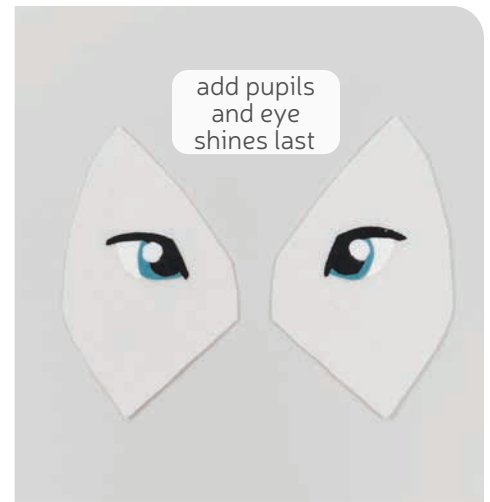


sew desu ne?

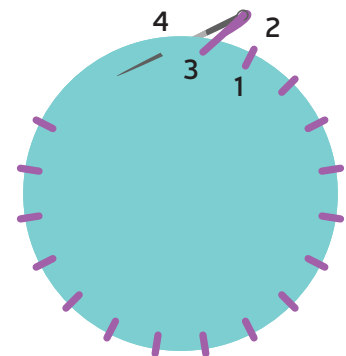
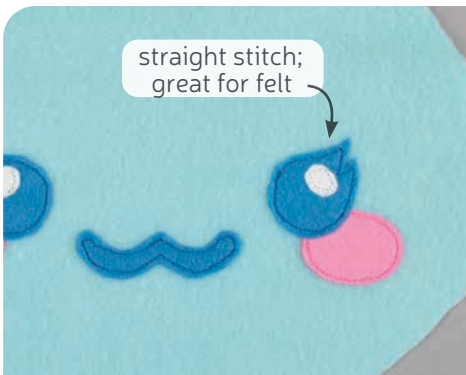
| WWW.CHOLYKNIGHT.COM |

## 2. FINISH THE EYE APPLIQUE

- Continue with the smaller eye pieces, like the **irises**. Fuse them the same way using the paper pattern and photos as a guide.
- Lastly add the smallest pieces, the **pupil/eyelid** and the **eye shines**. Layer them on top of the current eye pieces to complete.



- This should complete the applique. If you used heavy duty fusible web, you can keep the pieces fused without sewing. If you used lighter fusible web, you'll want to stitch the pieces in place. A zigzag stitch with matching thread works nicely around the edges. For hand sewing options, see below.



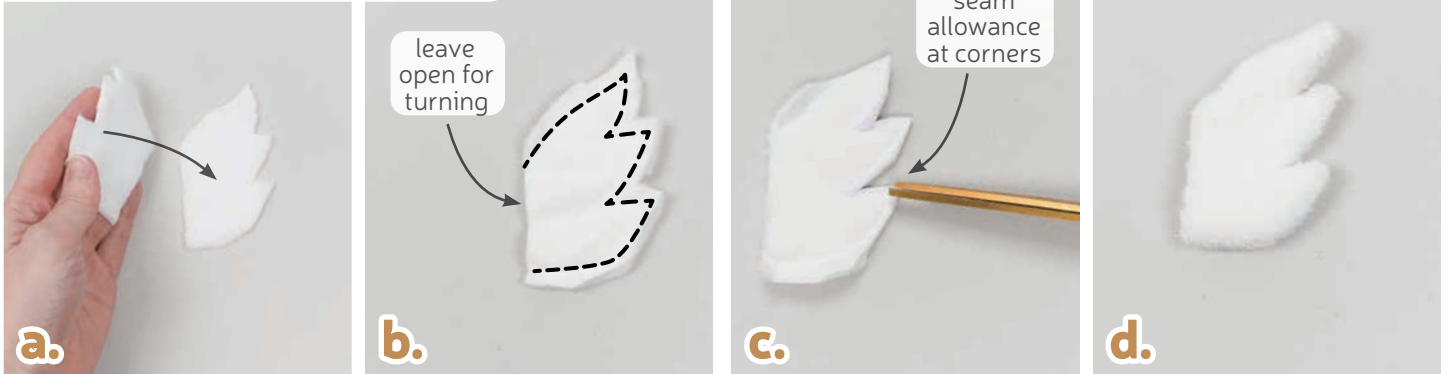
## 3. OTHER APPLIQUE OPTIONS

- Other good options for applique include a straight stitch, which involves sewing around the edge of the applique pieces with a straight stitch using matching thread -- about 1/8" in from the edge.
- You can also applique by hand; I prefer a whipstitch. Thread a hand-sewing needle with some matching thread and knot it. Bring the thread up from the back of the project; about 1/8" in from the edge of the applique shape. Bring it down perpendicular from the curve, just outside of the applique shape. This completes one stitch.
- For the next stitch, bring the needle back up about 1/8" away from the previous stitch and 1/8" in from the edge just as in the first stitch. Once again, bring it down just outside the applique shape. Continue this way until you've sewn around the shape.

sew desu ne?

| [WWW.CHOLYKNIGHT.COM](http://WWW.CHOLYKNIGHT.COM) |

## 4. SEW THE HEAD SPIKES



- Grab your **HEAD SPIKE** pieces (B). Take two of them and align them with rights facing and the raw edges matching up.
- Sew the pieces together along the pointed edges. Leave the straight edge free for turning the piece right side out later.
- Trim the excess seam allowance around the tight corners and curves. Trimming the outer corners will help reduce bulk and keep the spikes pointy. Clipping the inner corners will increase flexibility in those areas so the piece turns more cleanly.
- Turn the spikes right side out and define the points with a chopstick or similar turning tool. Repeat this step once more for a pair of head spikes.

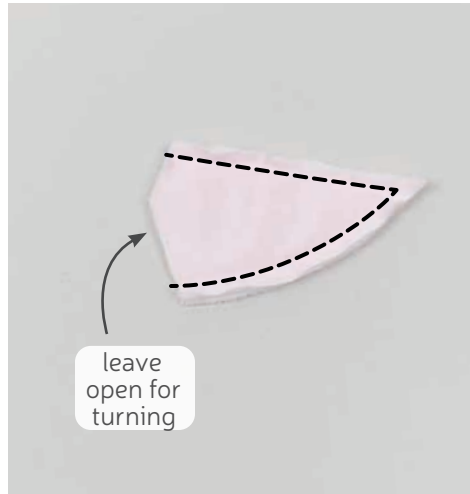


## 5. BASTE THE HEAD SPIKES

- If you haven't already, note the **spike placement lines** found on the paper pattern for the **HEAD SIDE** (A). Take one of your sewn **HEAD SPIKES** (B) and place it on the side of the head piece so the raw edges are within the **placement guides**.
- Now flip the spikes inward so it's layered on top of the head side piece and the raw edges are flush.
- Baste the spikes to the edge of the fabric within the seam allowance to hold it in place for future steps. Repeat this with your other head spike piece on your other head side piece.

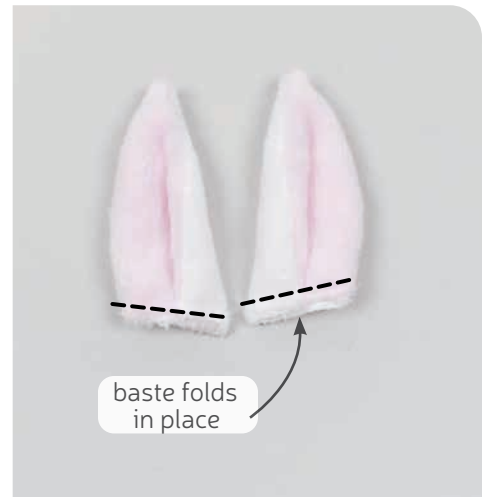
sew desu ne?

| [WWW.CHOLYKNIGHT.COM](http://WWW.CHOLYKNIGHT.COM) |



## 6. SEW THE EARS

- Grab your **EAR** pieces (C). Take one from your inner ear fabric and one from your main fabric. Align them with right sides facing and the raw edges matching up.
- Sew the ear pieces together along the long pointed edge. Leave the short straight edges free for turning the piece right side out.
- Trim the excess seam allowance at the tip of the ear. This will reduce bulk and keep the ear looking pointy. Repeat this step with your remaining ear fabrics so you have two sewn ears.



## 7. FOLD THE EARS

- Grab your sewn **EAR** (C) and turn it right side out. Define the point with a chopstick or similar turning tool.
- Fold your ear so the inner ear fabrics are facing each other. Follow the **fold line guide** found on the paper pattern and the straight raw edges of the ear should line up.
- Baste along the raw edge of the ear to hold the fold in place. Repeat this with your other ear going in the other direction so you have a mirrored pair as shown.

### BASTING:

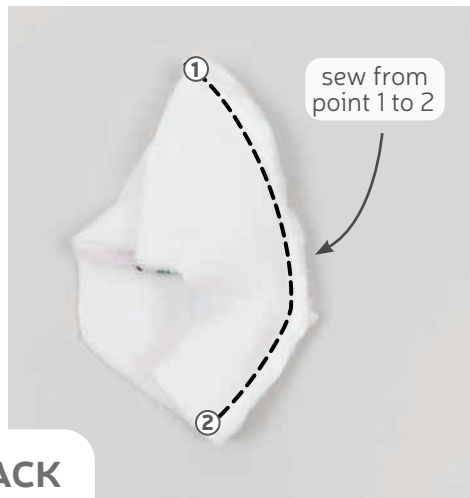
A form of temporary sewing meant to hold pieces in place. A long stitch length is often used for this reason. The finished result is not meant to be seen and sometimes is even removed later (depending on your project).

sew desu ne?

| WWW.CHOLYKNIGHT.COM |

## 8. BASTE THE EARS

- a. Grab your **HEAD SIDE** pieces so far (A). If you haven't already, note the **ear placement line** found on the paper pattern for the head side. It's located right above the **head spike placement** lines. Take your folded ear and align it just above the head spikes. The inner ear fabric should be facing down and the fold of the ear should be pointing up. Pin the ear to the edge of the head side.
- b. Baste the raw edge of the ear to the head side within the seam allowance to hold it in place for future steps. Repeat this with your other head side piece and your other ear so you have both sides of the head.



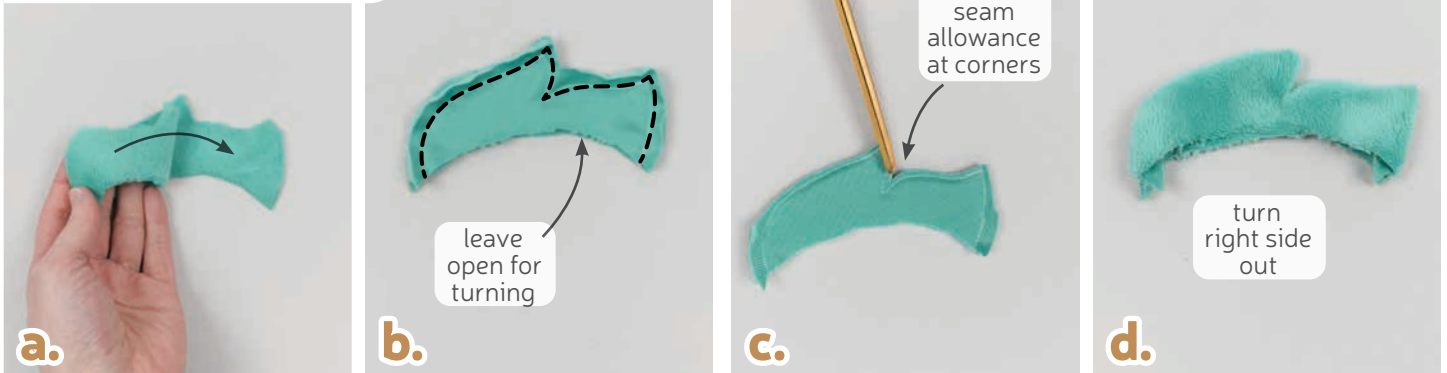
## 9. ATTACH THE HEAD BACK

- a. Grab your **HEAD BACK** pieces (D). The head back will join to the head side along the edge with the **EAR** (C) and **HEAD SPIKES** (B). But you can also look for the **numbered points** for help. This should join up **point 1** at the top and **point 2** at the bottom. Make sure right sides are facing and pin the fabrics together. This should sandwich the ears and head spikes in between the fabrics.
- b. Sew the head back to the head front from **point 1 to 2**.
- c. When complete, open up the pieces, and the ears and head spikes should be secured in the seam.

sew desu ne?

| [WWW.CHOLYKNIGHT.COM](http://WWW.CHOLYKNIGHT.COM) |

## 10. SEW THE MANE



- Grab your **MANE** pieces (E). Align them with right sides facing and the raw edges matching up. Pin the fabrics together.
- Sew the pieces together along the spiked edge. Leave the curved edge along the bottom open for turning the piece right side out.
- Trim the excess seam allowance at the tight corners and curves to reduce bulk and increase flexibility in those areas.
- Turn the mane right side out and define the points with a chopstick or similar turning tool.



## 11. BASTE THE MANE

- Grab one of your **HEAD** pieces so far (A/D). Also grab your sewn **MANE** (E). If you haven't already, note the **mane placement lines** found on the paper pattern for the head side and back. Align the mane within these **placement lines**. The mane will be attached along the top of the head, going from the front to the back.
- Flip your mane over so now the raw edges are flush. Pin the mane to the top of the head within the placement guides.
- Baste the mane to the head within the **placement guides**.

sew desu ne?

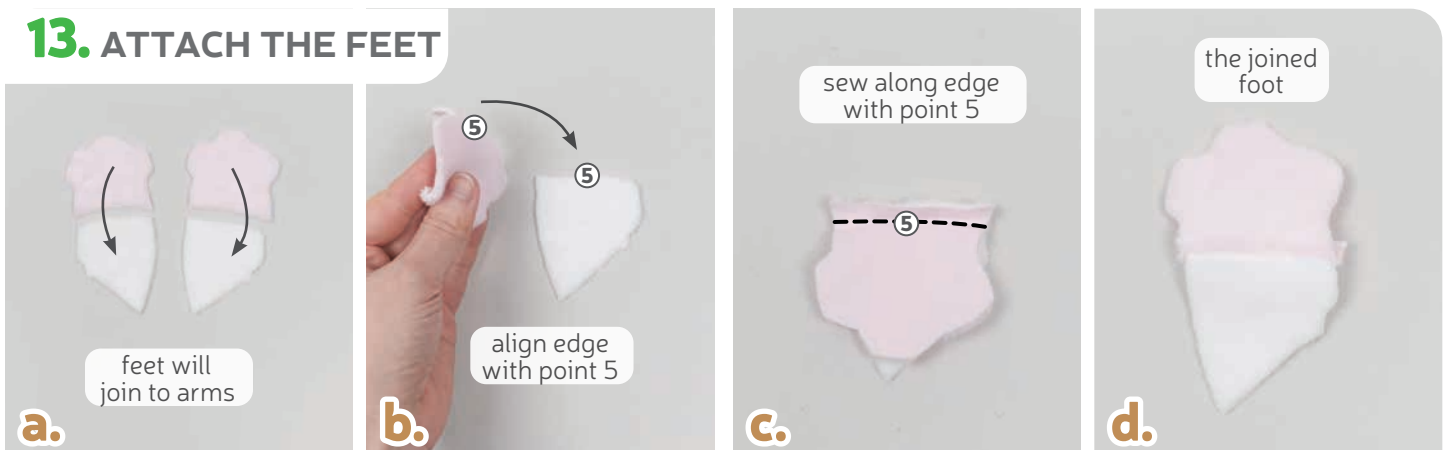
| [WWW.CHOLYKNIGHT.COM](http://WWW.CHOLYKNIGHT.COM) |



## 12. ATTACH THE OTHER HEAD SIDE

- Grab your other **HEAD SIDE** piece. Align it with the first piece so the right sides are facing and the raw edges match up. This should sandwich the **MANE** (E) piece between the layers. We're going to sew all along the top, front, and bottom of the head. The inner curve at the **neck opening** should be left open. This should take you from **point 3** all the way around to **point 4**. Pin the fabrics together.
- Sew the head pieces together from **point 3**, through **point 1** at the top, around to **point 2** at the bottom, and ending at **point 4** in the back.
- Turn the head right side out when complete. You can now set it aside for a while as we work on the body.

## 13. ATTACH THE FEET



- Grab your **ARM** pieces (G) and your **FOOT** pieces (I). These pieces will join together next along the inner curves as shown. But you can also look for the **numbered points** for help with alignment. Look for the edges marked with **point 5**.
- Flip over your foot piece so it's right sides facing with the arm and **point 5** matches up. Pin the edges together.
- Sew the foot to the arm along the edge with **point 5**.
- Open up the pieces when complete, then repeat this with your other arm pieces for 4 total.

sew desu ne?

| [WWW.CHOLYKNIGHT.COM](http://WWW.CHOLYKNIGHT.COM) |

## 14. SEW THE ARMS & LEGS



- Take two of your **ARMS** so far (G/I) and align them with right sides facing and the raw edges matching up. Pin the fabrics together.
  - Sew the pieces together along the sides and around the feet. Leave the edge marked with **notches** free.
  - Trim the excess seam allowance around the foot to reduce bulk and increase flexibility in those areas. Turn the arm right side out and define the toes with a chopstick or similar turning tool.
  - Stuff the arm lightly with stuffing. We'll be attaching it to the belly next, so the opening should be rather light.
- Repeat steps 13-14 once more with your **LEG** pieces (H) and your remaining foot pieces.



## 15. BASTE THE ARMS & LEGS

- Grab your **BELLY** piece (F). If you haven't already, note the **arm and leg placement markings** found on the paper pattern for the belly. There are **placement lines** as well as **notches** to help ensure the arms and legs point in the correct direction. Align your arms and legs within these lines so the raw edges match up as well as the **single notches** for the arms and the **double notches** for the legs.
- Now flip the arms inward so the raw edges are flush and the feet point toward the center of the belly. Pin the arms to the edge of the belly.
- Baste the arms to the belly within the seam allowance to hold them in place for future steps. Repeat this step with your legs so all four arms and legs are attached.

sew desu ne?

| [WWW.CHOLYKNIGHT.COM](http://WWW.CHOLYKNIGHT.COM) |

## 16. ATTACH THE BACK TO THE BELLY



- Grab your **BACK** pieces (J). These pieces will join to the sides of the **BELLY** (F) and secure the **ARMS** and **LEGS** (G & H) in the seams. You can also look for the **numbered points** for help with alignment. Look for **points 6 & 7**.
- Grab one of your back pieces and align it with the body so the arms and legs are sandwiched between the layers. **Point 6** should match up at the top of the neck and **point 7** will match up at the tip of the tail. Pin the fabrics together.
- Sew the body back to the belly from **point 6 to 7**.



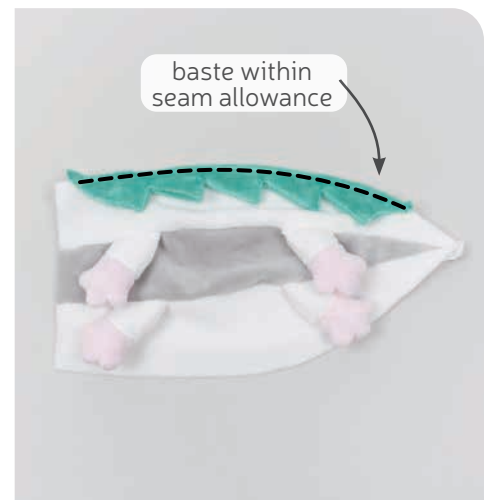
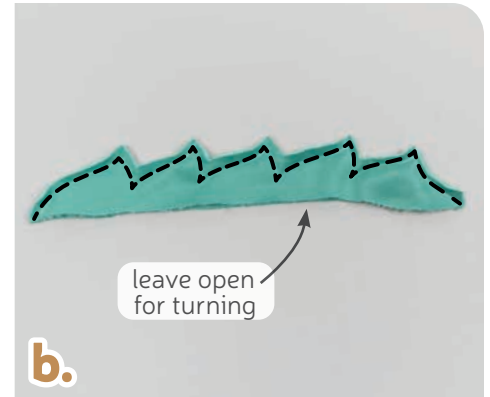
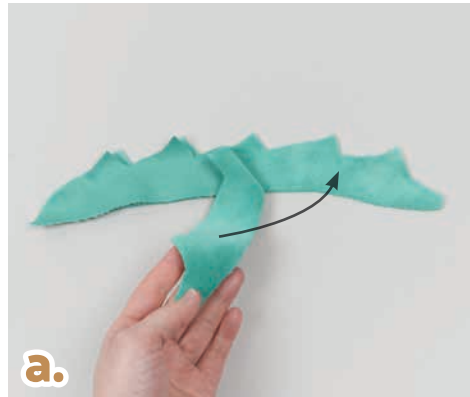
- Open up the pieces when complete and the **ARMS** and **LEGS** should be secured within the seam.
- Grab your other back piece and align it with the belly so right sides are facing and the raw edges match up.  
If you haven't already, note the **opening for stuffing markings** found on the paper pattern for the belly. Transfer these markings over to the edge of the fabrics you've pinned.  
Sew the back to the belly from **point 6 to 7**, but skip over the **opening for stuffing**. This opening will make stuffing the body much easier later.
- When complete it should look something like photo F.

sew desu ne?

| [WWW.CHOLYKNIGHT.COM](http://WWW.CHOLYKNIGHT.COM) |

## 17. SEW THE BACK FUR

- Grab your **BACK FUR** pieces (K). Align them with right sides facing and the raw edges matching up. Pin the fabrics together.
- Sew the fur together along the pointed edge. Leave the slightly curved edge open for turning.
- Trim the fur along the tight corners and curves to reduce bulk and increase flexibility in those areas.
- Turn the fur right side out through the opening, and define the points with a chopstick or similar turning tool.

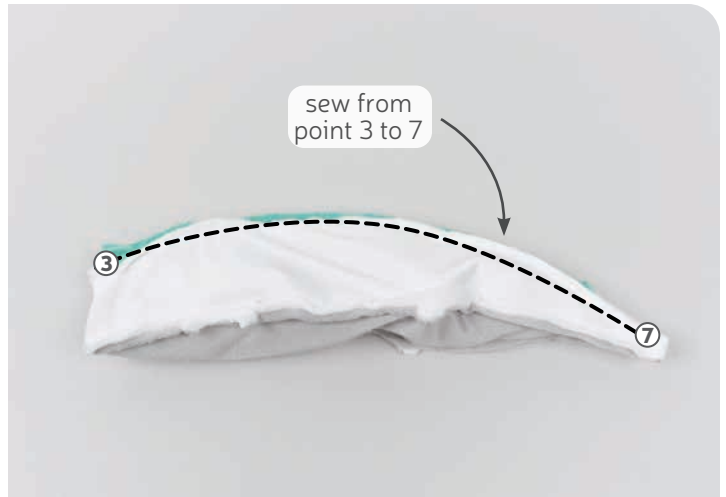


## 18. BASTE THE BACK SPIKES

- Grab your body so far. If you haven't already, note the **back fur placement lines** found on the paper pattern for the **BACK** (J). Align the **BACK FUR** (K) within these lines.
- Now flip the fur so it's facing the back piece and the raw edges are flush. Pin the fur to the body back within the **placement lines**.
- Baste the fur to the body back within the seam allowance to hold it in place for future steps.

sew desu ne?

| WWW.CHOLYKNIGHT.COM |



## 19. SEW THE BACK SEAM

- Grab one of your **BODY BACK** pieces (J) and align it with the other along the center back edge. This should sandwich the **BODY FUR** (K) within the layers. It will also match up **point 3** at the neck and **point 7** at the tail tip. Make sure right sides are facing and pin the fabrics together.
- Sew the back pieces together from **point 3 to 7**. This should secure the body fur inside the seam. You may need to reshuffle the arms and legs a bit so they stay out of your way as you sew the seam.



## 20. TRIM AND TURN THE BODY

- Trim the excess seam allowance at the tip of the tail. This will help reduce bulk in that area so the tail stays looking pointy.
- Turn the body right side out through the opening in the neck. Define the tail with a chopstick or similar turning tool.

sew desu ne?

| [WWW.CHOLYKNIGHT.COM](http://WWW.CHOLYKNIGHT.COM) |



## 21. STUFF THE BODY

- Begin stuffing the body with stuffing. You can use the **opening for stuffing** in the side of the body instead of the neck to make this easier. Start by getting small bits into the tip of the tail so it stays looking pointy and doesn't deflate over time.
- Continue using the **opening for stuffing** in the side of the body to fill up the bottom half.
- When the lower half of the body is full, continue filling up to the neck.



## 22. STUFF THE HEAD

- When the body is complete, begin stuffing the head. First start by getting stuffing firmly in the nose area. This area may look a little flat, but that's okay because we'll be adding the **MUZZLE** later.
- Continue filling up the head until you reach the back of the head.
- When complete, we'll be joining the head to the body at the **neck opening**. If you're watching the numbered points this will align **point 3** at the top of the neck and **point 4** at the bottom.

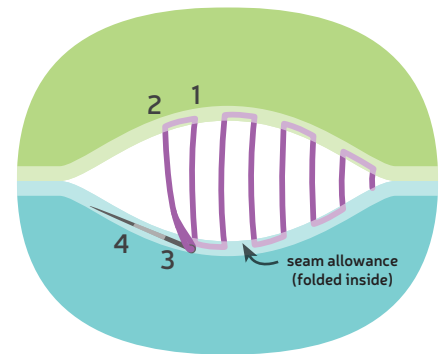
sew desu ne?

| [WWW.CHOLYKNIGHT.COM](http://WWW.CHOLYKNIGHT.COM) |

## 23. ATTACH THE HEAD



- To begin attaching the head, start by grabbing a hand sewing needle and threading it. Begin using a ladder stitch to attach the head. Take one stitch into the neck opening of the head at **point 3**, then take another stitch into the neck opening of the body at **point 3**.
- Continue stitching the head to the body around the neck opening. Use longer basting stitches (about 1/2" long) for this part. The head will match up with the belly when you come around to **point 4**.
- Continue working until you get close to where you started. If you find the neck needs any extra stuffing (to prevent a wobbly neck), you can sneak in a bit here. Check that you like the placement of the head and it isn't twisted or tilted.



- If you like the head how it is, stitch around the neck again but use tinier, neater stitches for the second pass.
- When you're finished, stitch a knot into the end of the seam. Then insert the needle near the finished knot. Bring the needle out about 1-2" away and pull it through. Pull the thread taut while snipping the thread. The excess thread should sink back inside the plush -- all hidden!
- Repeat ladder stitching the opening in the body closed.

sew desu ne?

| [WWW.CHOLYKNIGHT.COM](http://WWW.CHOLYKNIGHT.COM) |

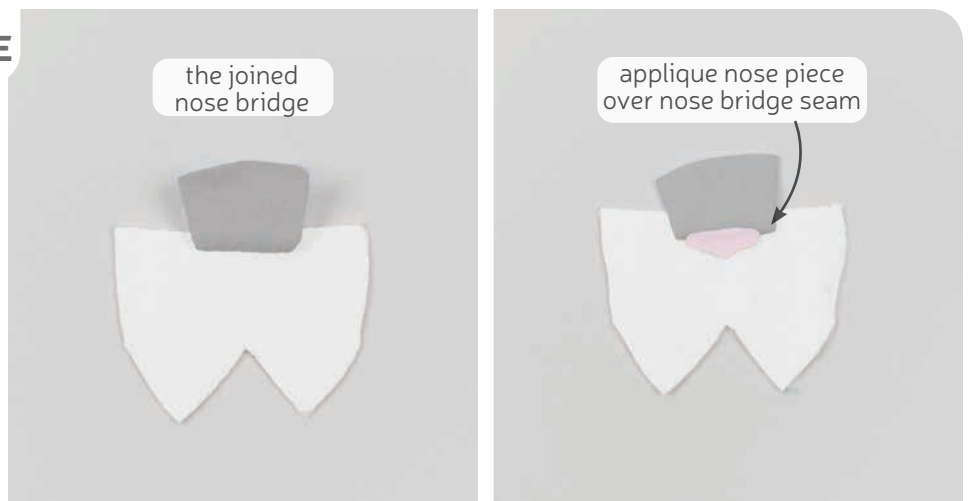


## 24. ATTACH THE NOSE BRIDGE

- Grab your **MUZZLE** (L) and **NOSE BRIDGE** pieces (M). These pieces will join together along the inner edges as shown, but you can also look for the **pattern markings** for help with alignment. The pieces will join along the edge with the **square marking**.
- Flip the nose bridge piece so it's right sides facing with the muzzle. The **square marking** should match up at the center.
- Sew the nose bridge to the muzzle along the edge with the **square marking**.

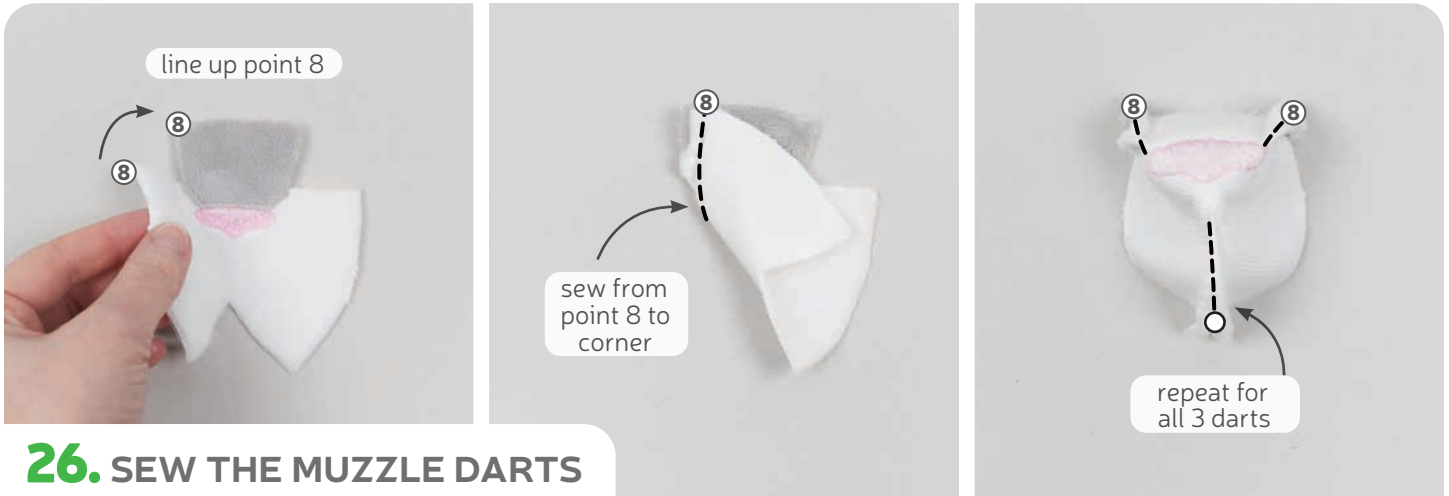
## 25. APPLIQUE THE NOSE

- Open up your muzzle pieces when complete.
- Now you can add the **nose applique** over the **nose bridge seam**. Follow the instructions from steps 1-2 to trace your nose template and applique it over the nose bridge to complete.



sew desu ne?

| [WWW.CHOLYKNIGHT.COM](http://WWW.CHOLYKNIGHT.COM) |



## 26. SEW THE MUZZLE DARTS

- Grab your **MUZZLE** piece so far. There should be 3 wedge shapes around the outer edge of the muzzle. These are **darts**. We're going to sew them starting by folding the fabric at the corner of the **dart** and matching up the slanted lines. The first two **darts** can be found at the sides of the **NOSE BRIDGE**. This should match up **point 8** on the muzzle to **point 8** on the nose bridge.
- Sew from **point 8** down into the corner, very close to the **nose applique**.
- Repeat this with the other nose bridge **dart**. Then repeat again with the **dart** at the center bottom marked with an **open circle marking**. This should create 3 darts total.

### DARTS:

A wedge-shaped gap found in a pattern. When sewn in fabric, it creates a tuck in the fabric and develops a 3D shape. The diagonal sides of the wedge are the **LEGS**; these are matched up and sewn to the **POINT** of the dart.



## 27. ATTACH THE MUZZLE BASE

- Grab your **MUZZLE BASE** piece (N). Grab your muzzle so far and align the open edge around the outside of the muzzle base. You can also look for the **pattern markings** for help with alignment. The **filled circle marking** will line up at the center top, and the **open circle marking** will line up at the center bottom. Pin the muzzle to the base all the way around.
- Sew the muzzle to the base all the way around the shape.
- The third photo shows what it might look like when viewed from the muzzle base side.

sew desu ne?

| WWW.CHOLYKNIGHT.COM |



## 28. TURN & STUFF THE MUZZLE

- To turn the **MUZZLE**, cut a short slit through the **MUZZLE BASE** piece only, across the middle. You can also look for the **cutting guide** found on the paper pattern.
- Turn the muzzle right side out through the opening you've cut.
- Stuff the muzzle semi-firmly using the opening in the base.

## 29. ATTACH THE MUZZLE

- Grab your stuffed muzzle and align it onto the front of the head. It should be centered between the eyes so the nose bridge is about in line with the inner eye corners.
- Ladder stitch the muzzle to the face just inside of the **muzzle seam** (from step 27). Sew all around the muzzle to complete.



sew desu ne?

| [WWW.CHOLYKNIGHT.COM](http://WWW.CHOLYKNIGHT.COM) |

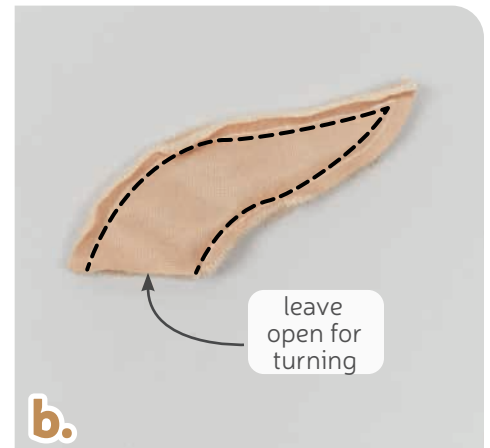
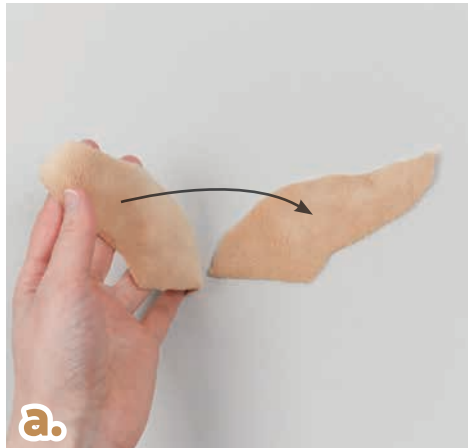
### 30. SECURE THE EARS & HEAD SPIKES

- If desired, you can also take this time to secure the **EARS** and **HEAD SPIKES**. If you want them to point backward instead of outward, fold them so they're flush against the back of the head.
- Ladder stitch the ears and spikes to the head about 1" away from the side seam. This will secure them so they stay pointing backward and don't stick outward. Repeat for both sides.



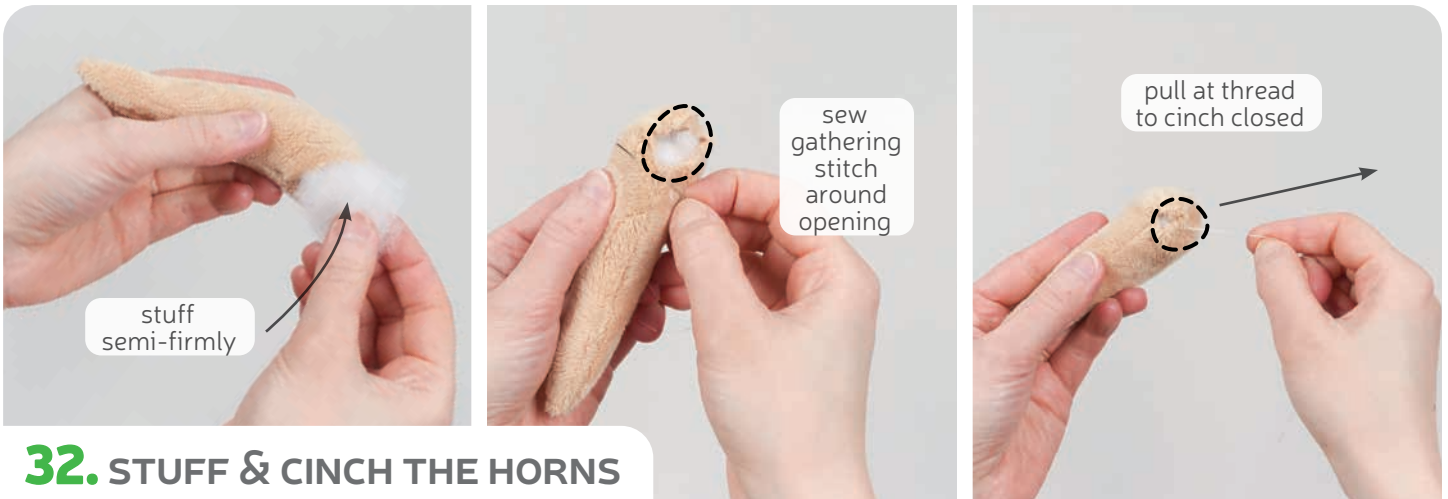
### 31. SEW THE HORNS

- Grab your **HORN** pieces (O). Take two of them and align them with right sides facing and the raw edges matching up.
- Sew the pieces together along the pointed edge. Leave the short straight edge free for turning the piece right side out later.
- Trim the excess seam allowance along the point of the horn. This will reduce bulk in this area so the piece turns more cleanly.
- Turn the horn right side out through the opening in the base. Define the point with a chopstick or similar turning tool. Repeat this once more so you have two horns total.



sew desu ne?

| WWW.CHOLYKNIGHT.COM |



### 32. STUFF & CINCH THE HORNS

- Stuff the **HORN** (O) semi-firmly with stuffing. Start by getting small bits in the tip of the horn so it stays looking pointy and doesn't flatten over time. Then work your way to the base of the horn.
- Grab a hand sewing needle and thread it. Sew a gathering stitch around the open edge of the horn, about  $\frac{1}{4}$ " away from the raw edge.
- Pull at the gathering thread to cinch the horn closed. Sew a few knots into the center to hold it closed. Repeat this with your other horn for two total.

#### GATHERING:

The process of shortening the length of a piece of fabric by sewing long stitches through it. When the thread is pulled, it forms small folds that ruffle the fabric.

#### GATHERING STITCH:

A long version of the running stitch, which is a stitch done by weaving the needle in and out of a length of fabric going along a line. The long stitches (about  $\frac{1}{4}$ " -  $\frac{1}{2}$ " long) gather the fabric when pulled later.

### 33. ATTACH THE HORNS

- Take your stuffed **HORN** (O) and align it onto the top of Haku's head. Align it in front of the ear and about  $\frac{3}{8}$ " away from the center seam. Make sure the tip is pointing backward and the cinched end is facing the head.
- Ladder stitch the horn to the head all the way around the base. Repeat this with your other horn for two total.



sew desu ne?

| [WWW.CHOLYKNIGHT.COM](http://WWW.CHOLYKNIGHT.COM) |

### 34. SEW THE WHISKERS



- Grab your **WHISKER** pieces (Q). Take two and align them with right sides facing and the raw edges matching up. Pin the fabrics together.
- Sew the pieces together along the long curved edge. Leave the straight edge free for turning the piece right side out.
- Clip or trim the seam allowance around the curves to help the piece turn more cleanly.
- Turn the whisker right side out through the opening in the base. Define the shape with a chopstick or similar turning tool. Repeat this with your other whisker pieces for 2 complete whiskers total.

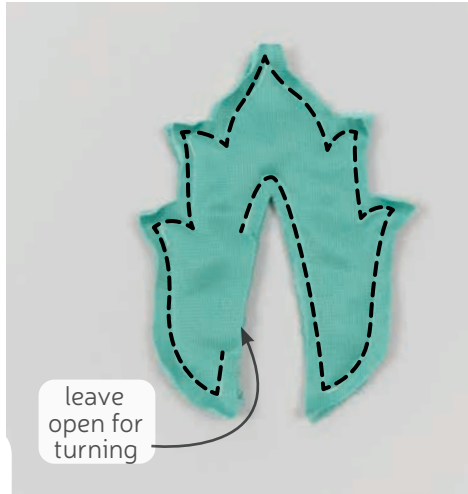
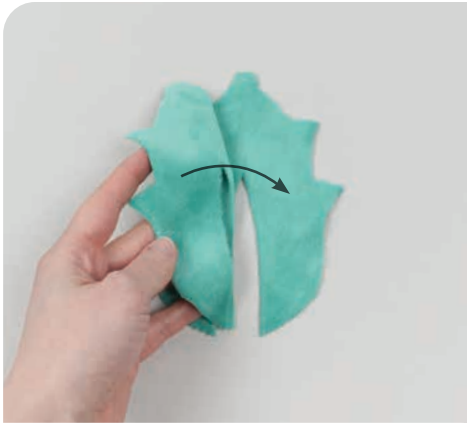


### 35. ATTACH THE WHISKERS

- Take your sewn **WHISKER** (Q) and tuck in the seam allowances at the opening.
- Take your whisker and align it onto the side of your muzzle, just beside the nose. In the sample, the side of the whisker is attached to the muzzle so the whisker points backward. You can also have the whisker pointing outward if you prefer.
- Ladder stitch the base of the whisker to the muzzle where the pieces overlap. Repeat this with your other whisker on the other side of the muzzle for a matching pair.

sew desu ne?

| [WWW.CHOLYKNIGHT.COM](http://WWW.CHOLYKNIGHT.COM) |



### 36. SEW THE TAIL FUR

- Grab your **TAIL FUR** pieces (P). Align them with right sides facing and the raw edges matching up. Pin the fabrics together.
- If you haven't already, note the **opening for turning marking** found on the paper pattern for the tail fur. Transfer these markings onto the edge of the fabrics you've just stacked. Sew around the tail fur piece but leave this **opening for turning** that you marked.
- Trim the excess seam allowance around any tight corners and curves to reduce bulk and increase flexibility in those areas.



### 37. ATTACH THE TAIL FUR

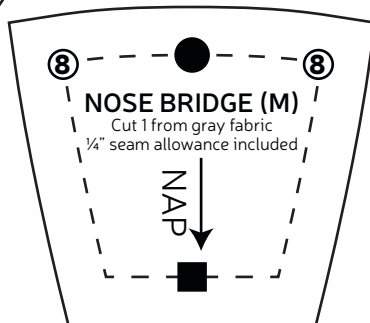
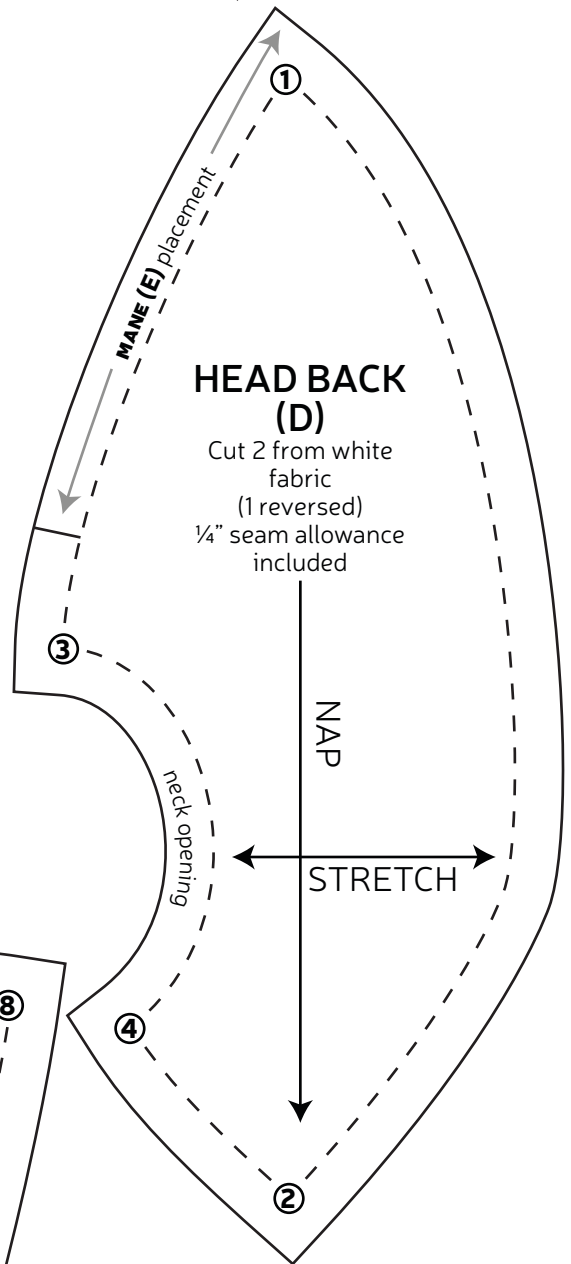
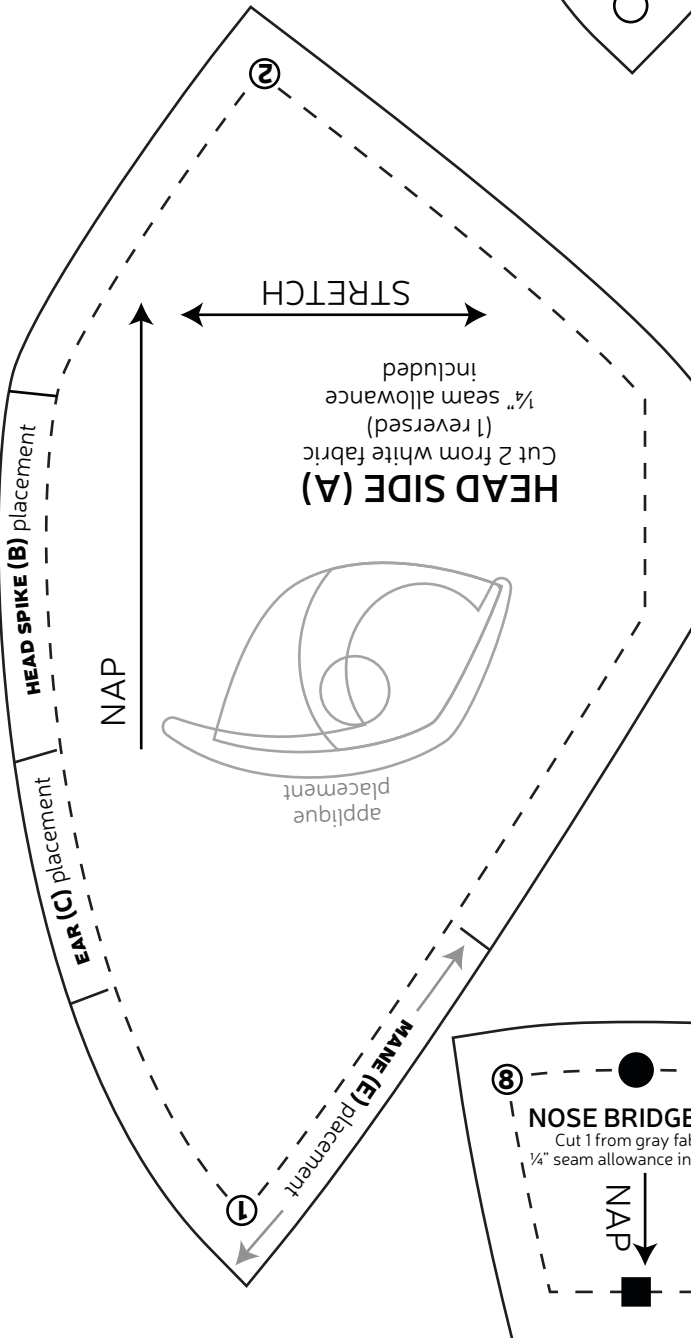
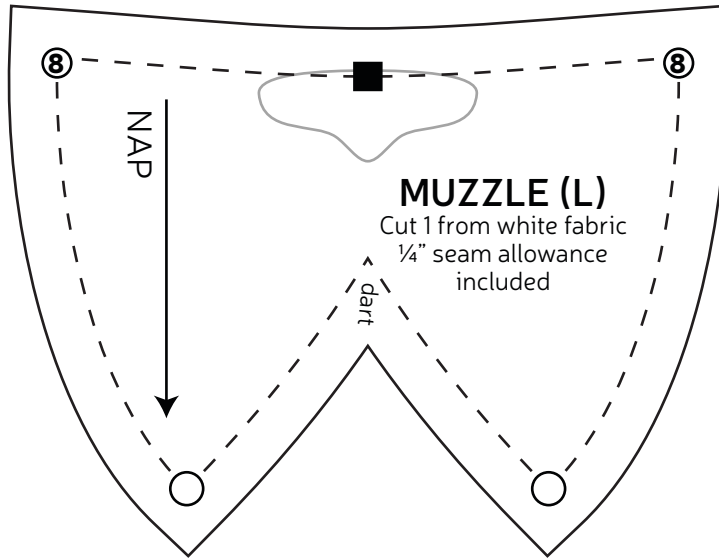
- Turn the **TAIL FUR** (P) right side out through the opening left along the edge. Define the points with a chopstick or similar turning tool.
- Take your body so far and align the tail fur around the point of the tail. It helps to align it along the belly seam and stick pins into the tail fur to hold it in place.
- To attach the tail, use a long ladder stitch around the base on one side. Check to make sure that the fur isn't twisted or tilted, then stitch around again with tinier neater stitches to hold it in place. Go around both the top and bottom side of the tail fur for the best join.

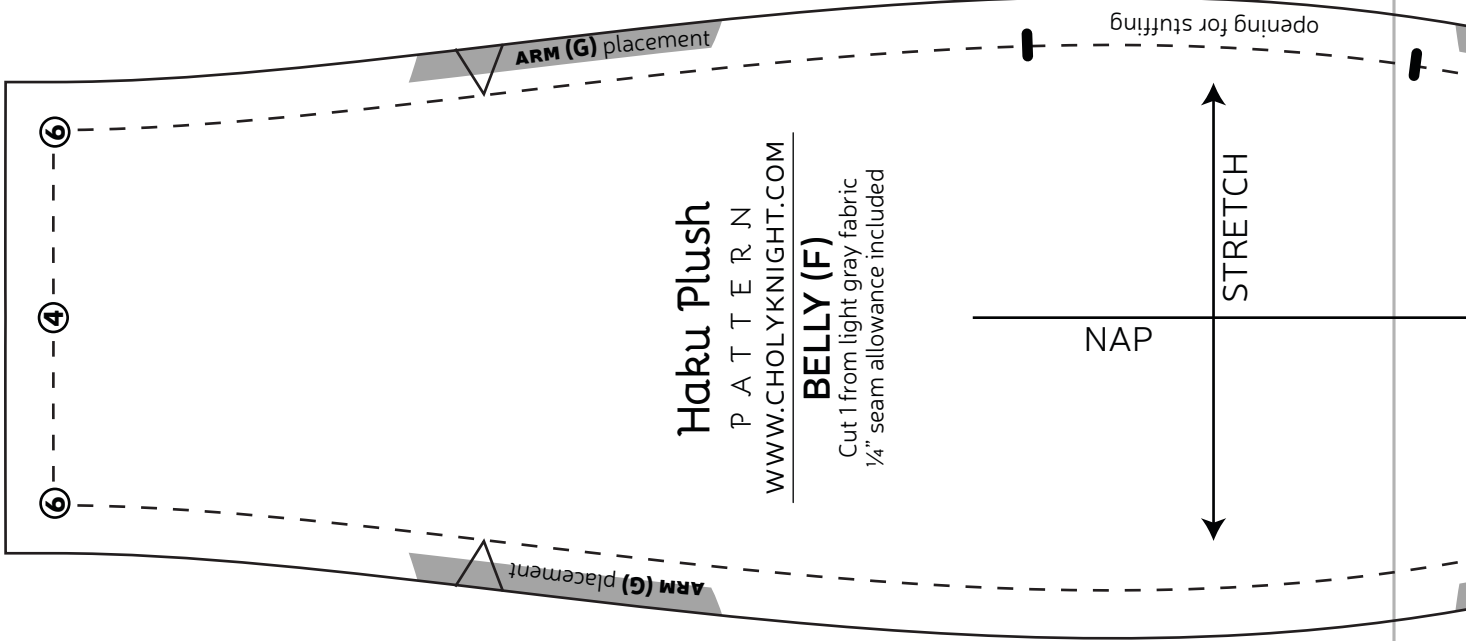
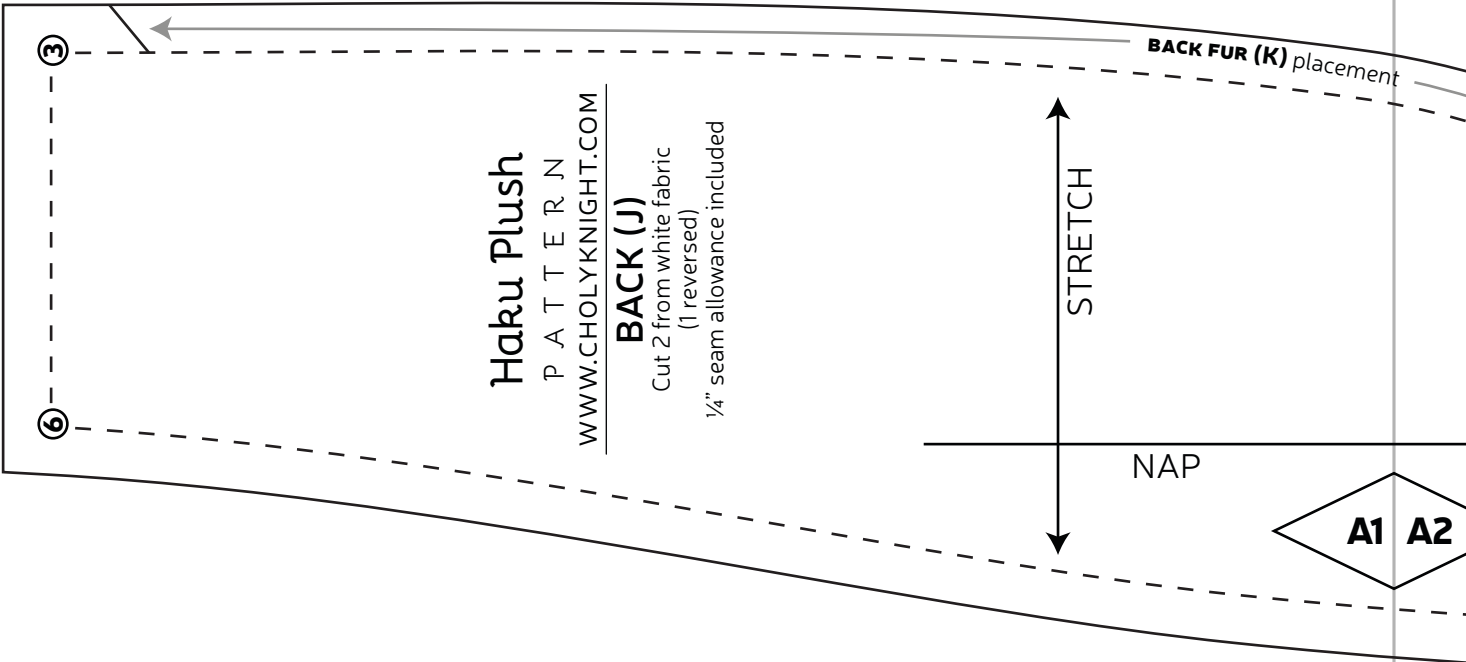
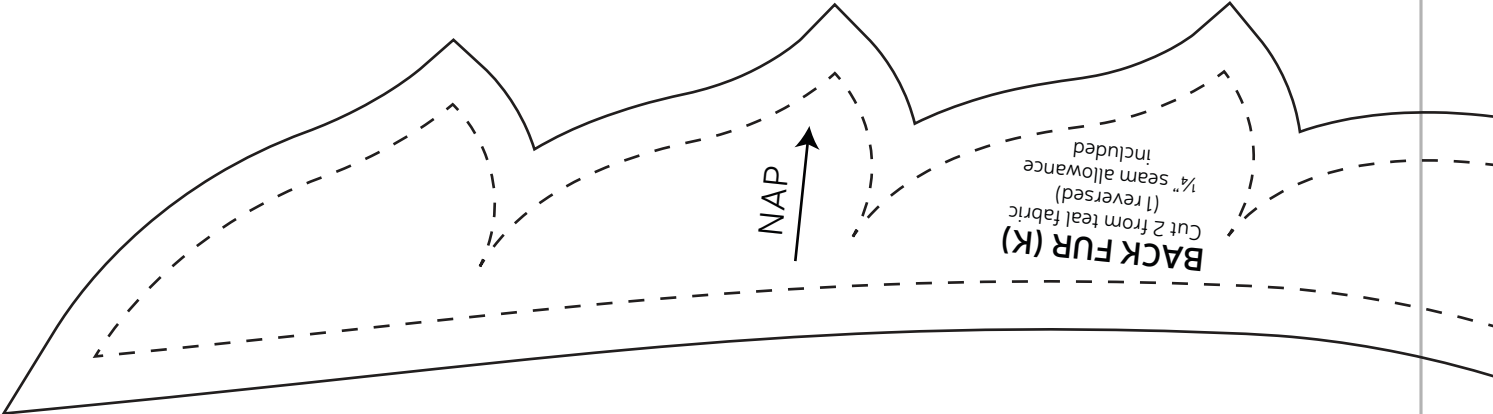
sew desu ne?

| [WWW.CHOLYKNIGHT.COM](http://WWW.CHOLYKNIGHT.COM) |

# TEST SQUARE 2"

measure this square to be sure you've printed at the proper proportions





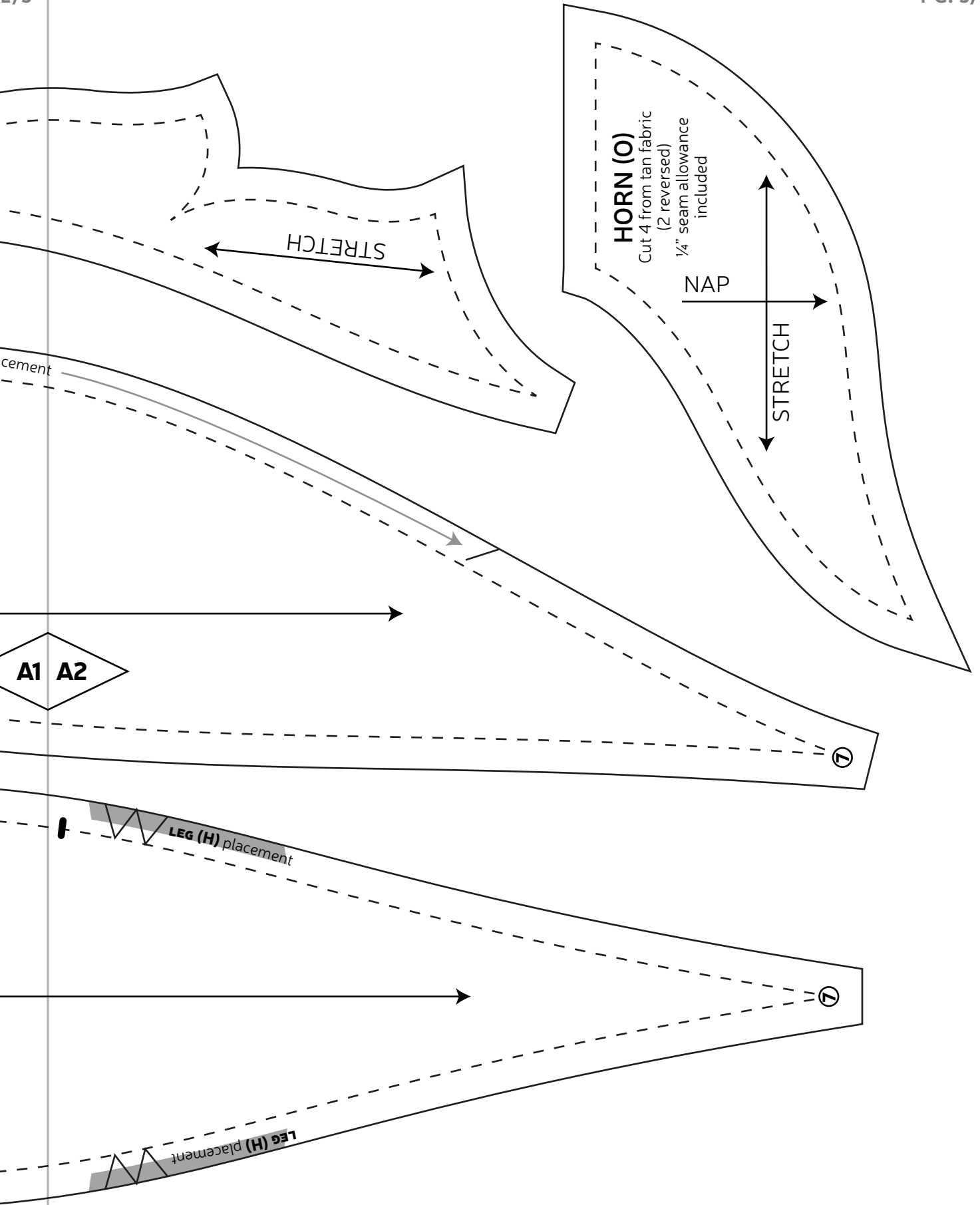
3

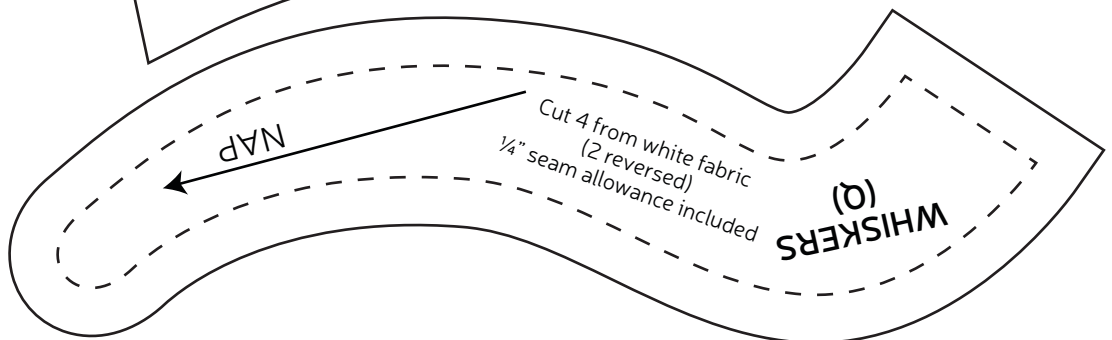
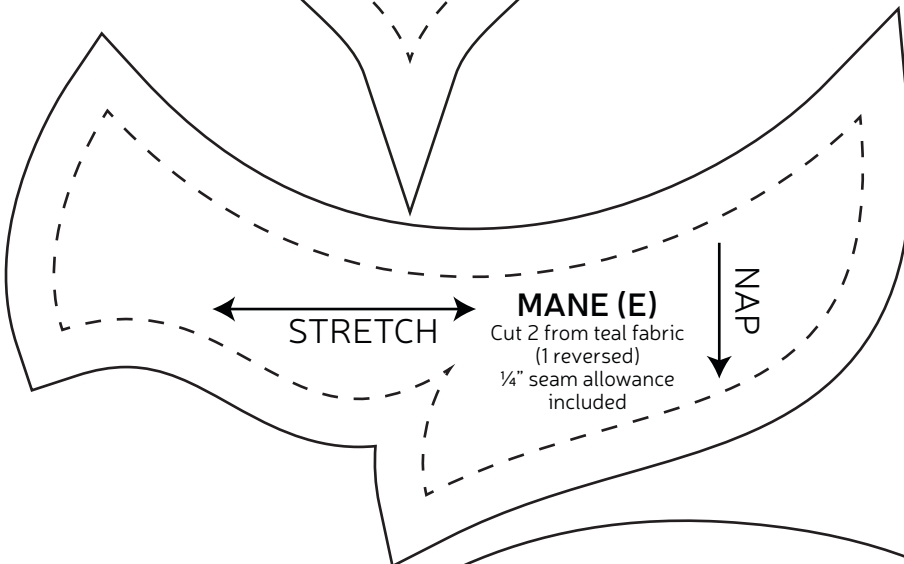
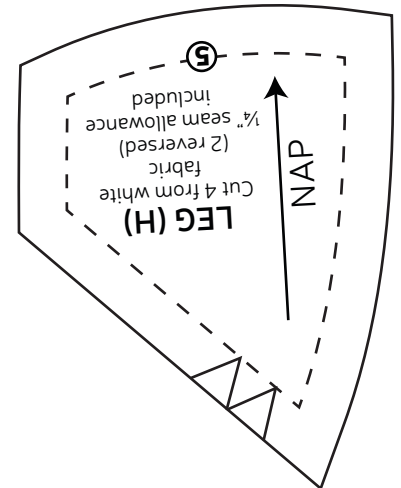
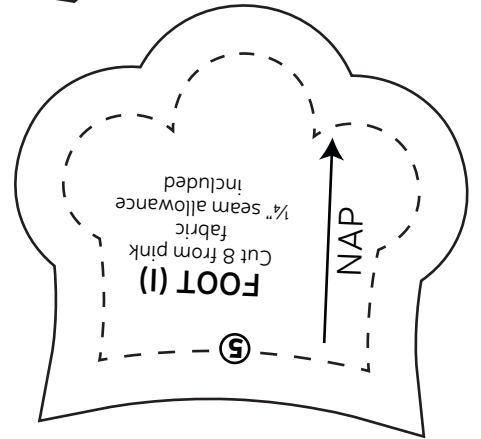
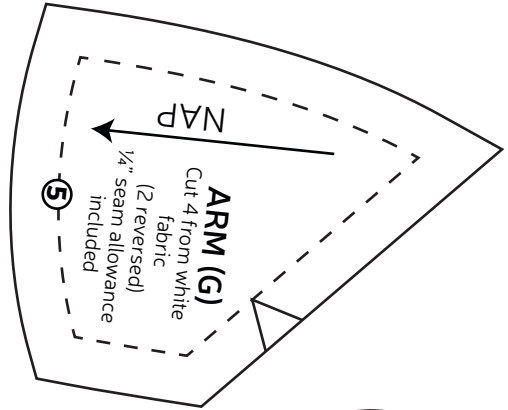
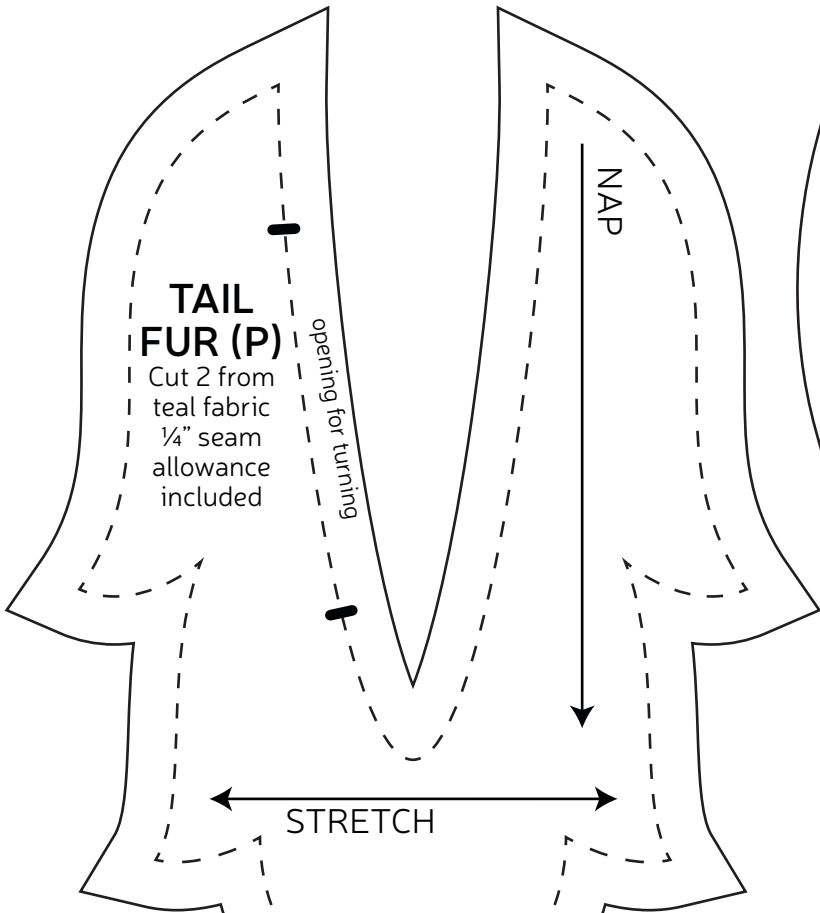
6

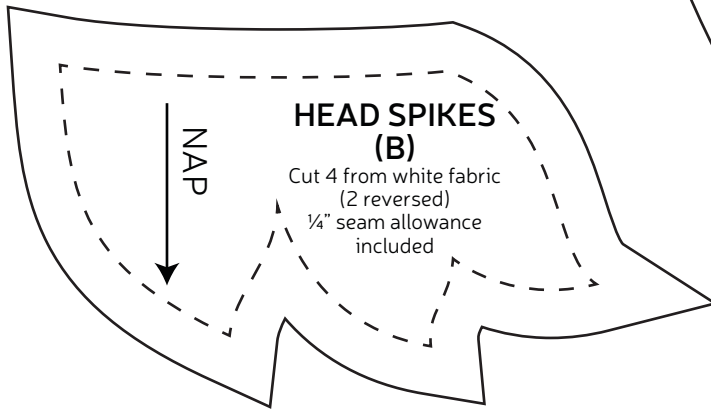
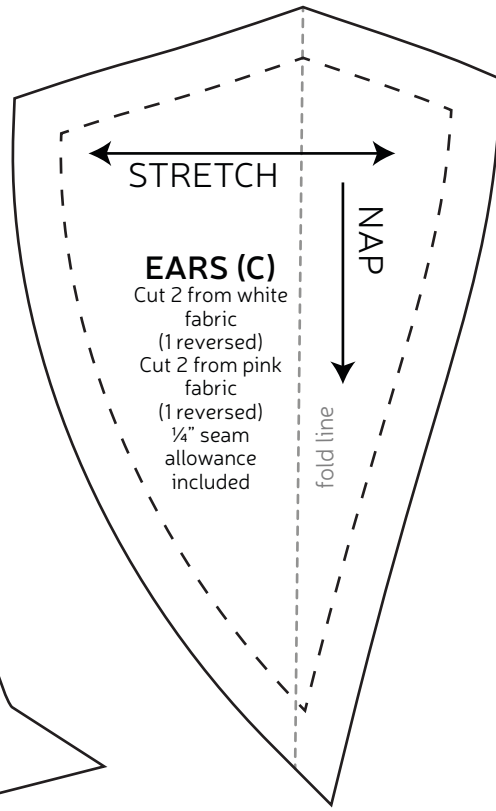
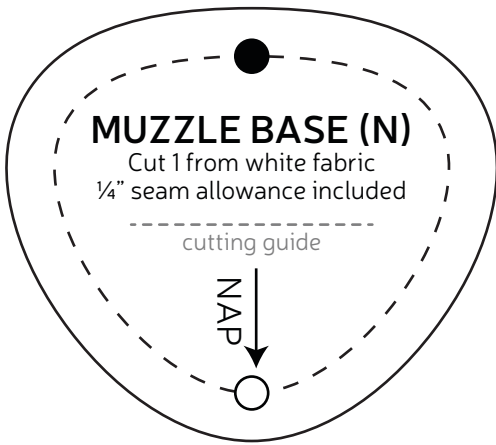
6

4

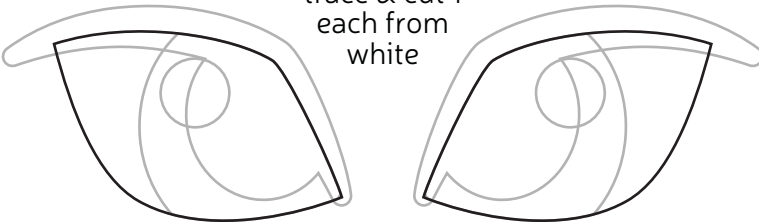
6



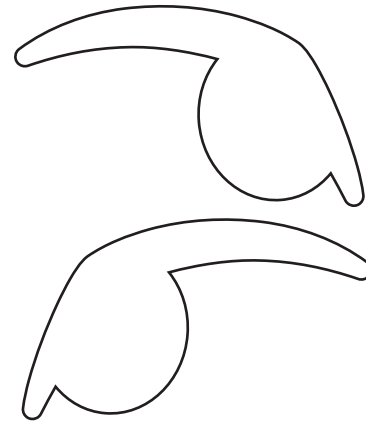




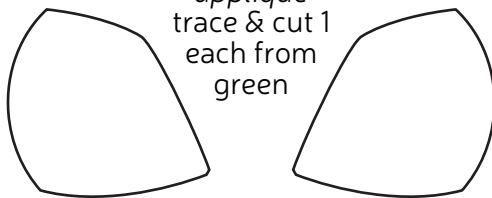
**EYE WHITE**  
*applique*  
trace & cut 1  
each from  
white



**PUPIL/EYELID**  
*applique*  
trace & cut 1 each  
from black



**IRIS**  
*applique*  
trace & cut 1  
each from  
green



**EYE SHINE**  
*applique*  
trace & cut 2  
from white



**NOSE**  
*applique*  
trace & cut 1  
from pink

