

CYNDAQUIL

plush



a free sewing pattern by



cyndaquil plush

These instructions will go over how to make this adorable sitting version of Cyndaquil! It features a chubby body, round head, long nose, stubby arms, tiny feet, and a big flame on its back.

DIFFICULTY:



The hardest part of this plush is likely getting the curves lined up in the nose and head. Second to that are the curves in the legs and belly. These sections are broken down bit by bit, so be sure to line up each section at a time if you're not used to curved sewing.

SKILLS USED:

- Fusible web applique
- Curved sewing
- Ladder stitch
- Sewing small pieces
- Matching notches and points
- Basting
- Darts

MAKES:

ONE PLUSH:

About 9" tall from bottom of body to top of head, 10" long from tip of tail to tip of flames, and 6½" wide from each side of leg.



sew desu ne?

| WWW.CHOLYKNIGHT.COM |

MATERIALS & TOOLS:

- ¼ yd. of cream fabric for body
- ⅓ yd. of dark teal fabric for back and upper head
- ¼ yd. of orange fabric for back flame
- ⅛ yd. (or 4" x 4") of white fabric for toes
- 3" x 3" of black applique fabric for eyes and nostrils
- 5" x 6" of yellow applique fabric for inner flames
- 6" x 6" of light or heavy duty fusible web
- sewing thread to match main fabric and applique fabrics
- poly-fil stuffing
- basic sewing tools (sewing machine, scissors, iron, needles, pins, fabric marker, seam ripper)



FUSIBLE WEB:

- Fusible web adhesive is a sheet of adhesive with a paper backing.
Not to be confused with fusible interfacing, which is adhesive attached to a fabric/fiber backing.
- Some common brands are **Pellon** & **HeatnBond**
- In countries outside the US, it may also be known as **bondaweb**
- It comes in **light** and **heavy duty** varieties. Lightweight strength is meant for applique you intend to sew later. Heavy duty versions are for a no-sew bond. If you try to sew them later your machine might have trouble penetrating the glue.



APPLIQUE FABRICS:

- Good applique fabrics include **flannel**, **cotton**, **felt**, **minky**, and **fleece**.
- Flannel and cotton are best for detailed applique with a lot of layers because they're thinner. Meanwhile felt, minky, and fleece are better for simpler applique like body markings.
- **Flannel** is used in the example instructions (page 7).



sew desu ne?

| WWW.CHOLYKNIGHT.COM |

fabric comparison:



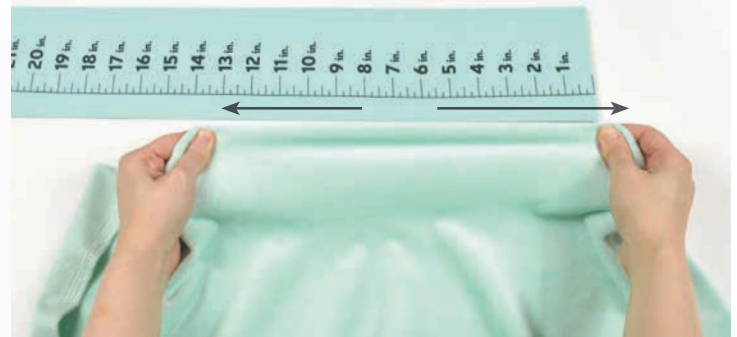
SUGGESTED BODY FABRICS:

MINKY OR FLEECE

Medium weight, plush fabrics with about 20%-30% stretch along the crosswise grain work best for this project. The varieties shown to the left are some good options and names to look for. Try to avoid heavyweight versions of fleece that are intended for outdoor apparel or they may cause trouble for the detailed areas.

You can also use non-stretch fabrics (such as felt), but be aware that the curves will be more difficult to sew and the result will look different. The plush will become more elongated and the edges will look sharper.

10" of minky
stretches to 13"
= 30% stretch



MINKY

VS.

FELT



sew desu ne?

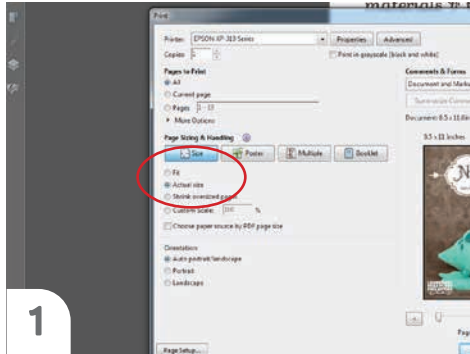
| WWW.CHOLYKNIGHT.COM |

PRINTING THE PATTERN:

Set your computer to print **PAGES 26-29.**

If you're unfamiliar with printing and assembling a .pdf pattern, read the steps to follow.

For the best results, use a .pdf reader like **ADOBE READER**. That's what is shown here and will give you the most control over the settings.



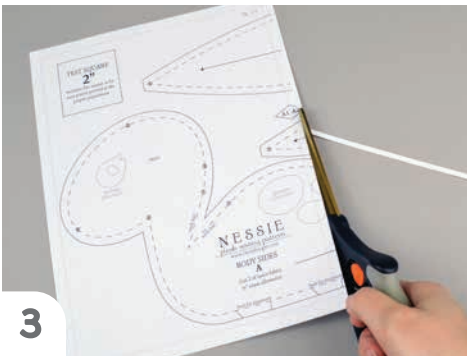
1

At the print dialog box, check the box that says print at "Actual Size" or 100%. Any other selection (such as "Fit to page") will distort the pattern so it's slightly larger or smaller and we don't want that.



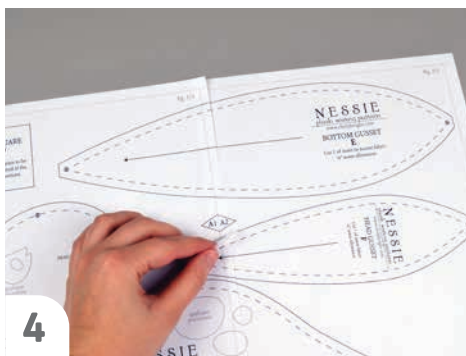
2

Print the pages needed for the file. You might have one or more. Either way, be sure you have the full collection by noting the page numbers in the corner.



3

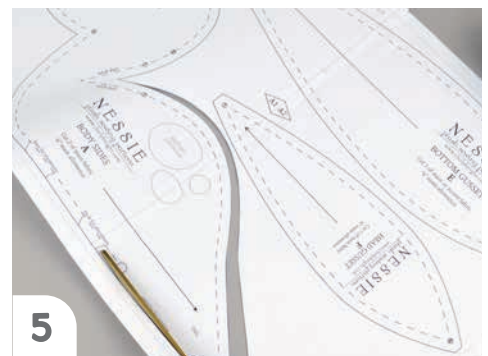
It's likely your printer will have a margin that ensures your image doesn't print to the very edge. Assembly will be easier if you trim off this blank margin edge. This will give you pages that overlap slightly during assembly. If you trim across the gray outline boxes, this will give you pages that don't overlap but rather butt against each other.



4

To line up the pattern pages, match up the corresponding diamond shapes. Each diamond will have a letter, so it's simply a matter of matching A1 to A2, B3 to B4 and so on. The faint gray lines indicate the border of every page, you should be able to line those up as well. When the diamond goes together, tape it in place.

If you have many pages, it's easier to tape up the pages into rows first. Then tape the rows together into a full block.



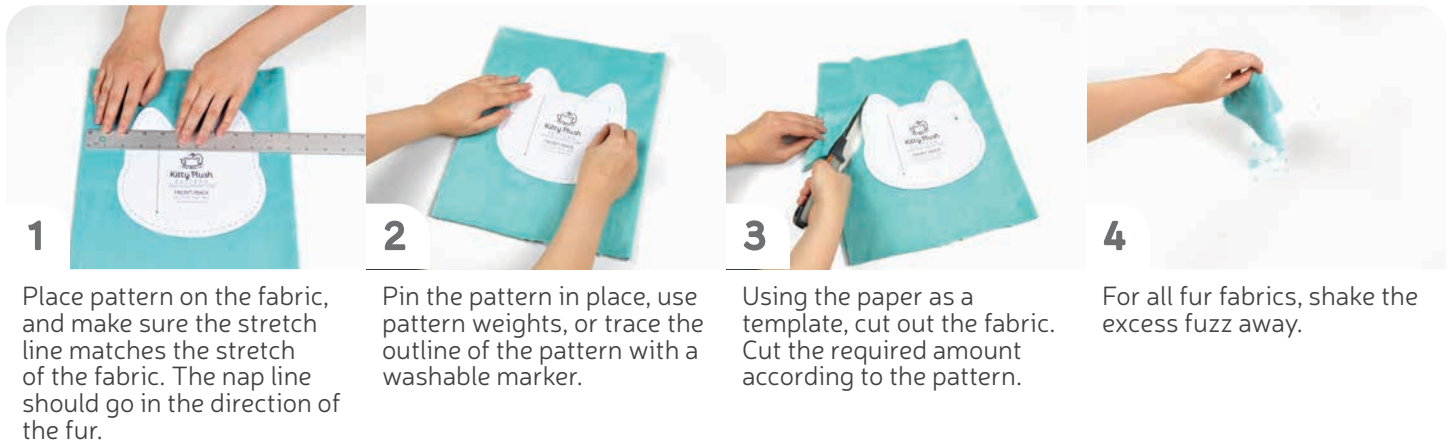
5

You can trace the patterns onto a different paper, or you can also just cut them straight from the printer paper -- be sure that each piece is fully taped together along the joins so they don't fall apart when you cut them.

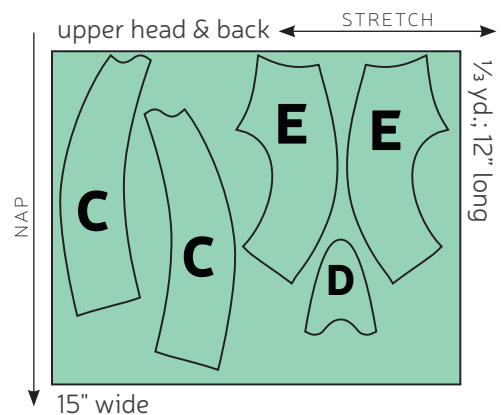
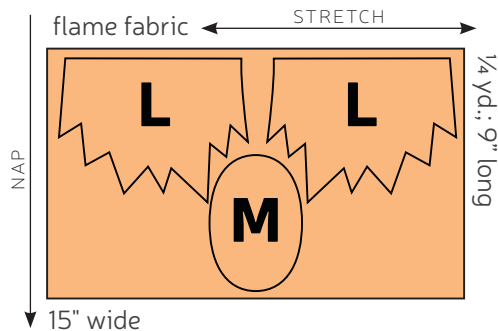
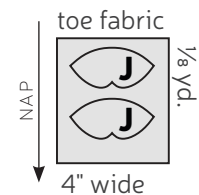
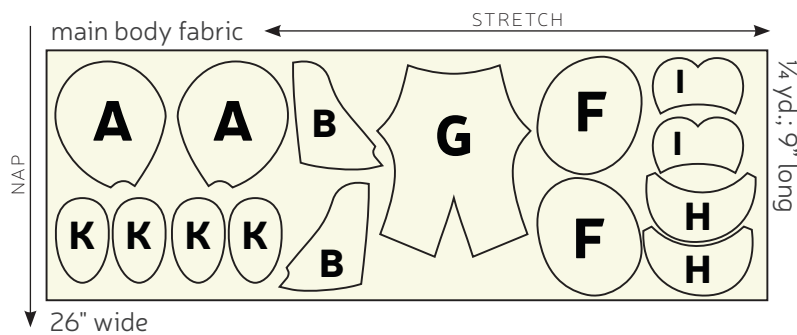
sew desu ne?

| WWW.CHOLYKNIGHT.COM |

CUTTING THE FABRIC:



CUTTING LAYOUT:



sew desu ne?

| WWW.CHOLYKNIGHT.COM |

BEFORE YOU BEGIN:

- Briefly read the project instructions so you know what to expect.
- If desired, mark the cut fabric pieces with the markings and symbols from the pattern. Or wait until the applicable step before transferring.
- Note that a ¼" seam allowance is used for the project unless otherwise mentioned. The seam allowance is included in the pattern templates.

1. FUSE THE EYE APPLIQUE



- Grab your fusible web and applique templates. Trace the pieces for the **eyes**. You should have: **eyes** (2, black).
- Fuse the bumpy (adhesive) side of the fusible web onto the applique fabrics.
- Cut out your applique pieces and grab your **EYE PANEL** piece (A). Grab the **eye** applique piece. Set your paper pattern on top of the eye panel piece. Align the applique piece on top where the placement markings are. Next, carefully pull the paper pattern away while holding the applique piece in place.
- Fuse the applique pieces with your iron. Use a press cloth, such as a scrap piece of cotton. This will help protect any polyester or fuzzy fabrics from melting or scorching. Repeat this with both eye panel pieces.



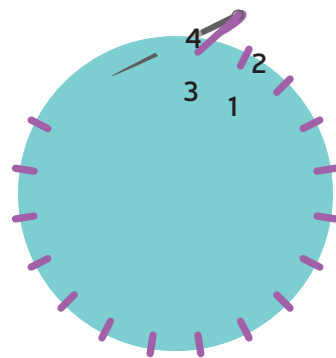
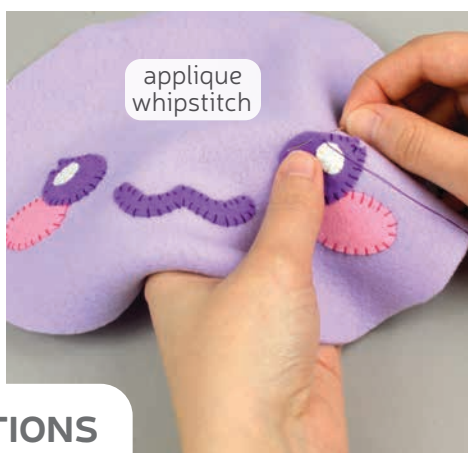
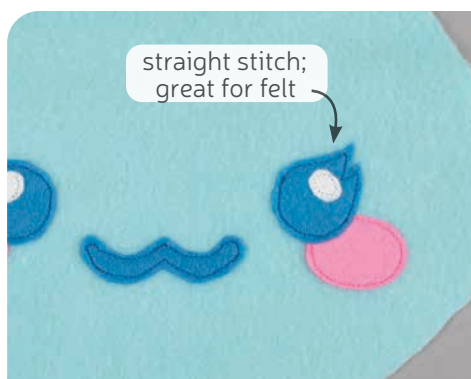
sew desu ne?

| WWW.CHOLYKNIGHT.COM |



2. FINISH THE APPLIQUE

- a. Grab your **NOSE** pieces (B), follow the same instructions as before to applique **nostrils** to the ends of the nose. Fuse these in place using the photo and paper pattern as a guide.
- b. Grab your **FLAME** pieces (L). Add the **inner flame** applique to these pieces as well.
- This should complete the applique. If you used heavy duty fusible web, you can keep the pieces fused without sewing. If you used lighter fusible web, you'll want to stitch the pieces in place. A zigzag stitch with matching thread works nicely around the edges. For hand sewing options, see below.



3. OTHER APPLIQUE OPTIONS

- a. Other good options for applique include a straight stitch, which involves sewing around the edge of the applique pieces with a straight stitch using matching thread -- about 1/8" in from the edge.
- b. You can also applique by hand; I prefer a whipstitch. Thread a hand-sewing needle with some matching thread and knot it. Bring the thread up from the back of the project; about 1/8" in from the edge of the applique shape. Bring it down perpendicular from the curve, just outside of the applique shape. This completes one stitch.
- c. For the next stitch, bring the needle back up about 1/8" away from the previous stitch and 1/8" in from the edge just as in the first stitch. Once again, bring it down just outside the applique shape. Continue this way until you've sewn around the shape.

sew desu ne?

| WWW.CHOLYKNIGHT.COM |



4. ATTACH THE NOSE

- Grab your **EYE PANEL** (A) and **NOSE** pieces (B). These pieces will join together along the inner edges shown here, but you can also look out for the **numbered points** for help with alignment. Look for **points 2 and 5**.
- Take your nose piece and flip it over so now it's right sides facing with the eye panel. Match up **points 2 and 5** along the edge. Pin the fabrics together.
- Sew the nose to the eye panel from **point 2 to 5**. Repeat this once more so you have both sides of the head.

5. SEW THE LOWER NOSE

- Take your sewn **EYE** and **NOSE** and align them with right sides facing. We'll be sewing the pieces together along the bottom edge of the nose, but you can also look for the **numbered points** for help with alignment. Look for **points 1 and 11**. Pin the fabrics together from **point 1 to 11**.
- Sew the nose pieces together from **point 1 to 11**.

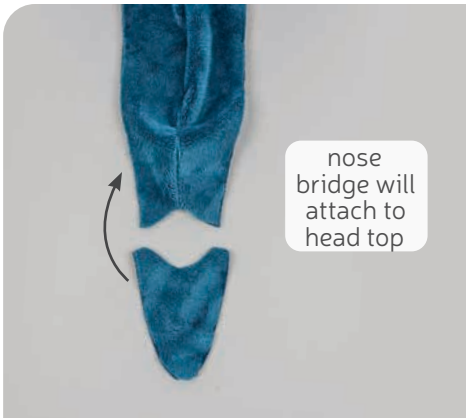


sew desu ne?

| WWW.CHOLYKNIGHT.COM |

6. SEW THE HEAD TOP

- a. Grab your **HEAD TOP** pieces (C). Align them with right sides facing and the raw edges matching up. We'll be sewing the pieces together along the center top, but you can also look for the **numbered points** for help with alignment. Look for **points 6 and 7**. Pin the fabrics together from **point 6 to 7**.
- b. Sew the head top pieces together from **point 6 to 7**. Open up the pieces when complete.

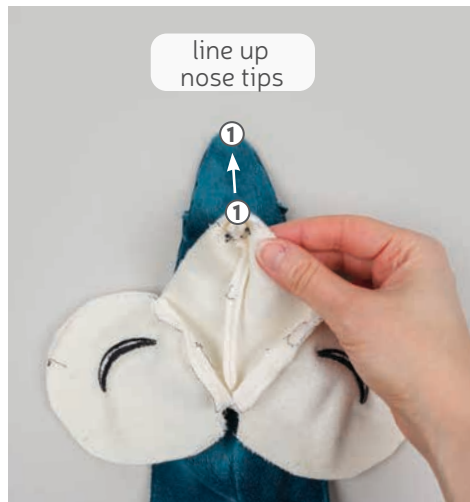


7. ATTACH THE NOSE BRIDGE

- a. Grab your **NOSE BRIDGE** piece (D). This piece will attach to the inner curve of the **HEAD TOP**, but you can also look for the **numbered points** for help with alignment. Look for **points 2 and 7**.
- b. Flip the nose bridge over so now it's right sides facing with the head top. Line up **point 7** at the center and **point 2** at each corner. Pin the fabrics together.
- c. Sew the nose bridge to the head top from **point 2 to 2** (with **point 7** in the middle).

sew desu ne?

| WWW.CHOLYKNIGHT.COM |



8. CENTER THE NOSES

- Next we're going to sew the **HEAD TOP** all the way around the **NOSE** (B) and **EYE** (A). This goes around a lot of curves, so we'll break it down into several steps. This will eventually match up **point 1** at the nose tip, **point 2** at the nose bridge corner, and **points 3 and 4** going around the head.
- Start by grabbing your nose piece and align it with the nose bridge at the very center tip at **point 1**. Make sure right sides are facing and pin the fabrics together.
- Sew the nose to the nose bridge at **point 1** only. This will keep the nose perfectly centered as we sew the rest of the face.

9. SEW THE NOSE TO THE NOSE BRIDGE

- Grab your **NOSE** (B) and align it with the nose bridge along the side. This should match up **point 2** at the seams. Make sure right sides are facing and pin the fabrics together.
- Sew the nose to the nose bridge from **point 1 to 2**.



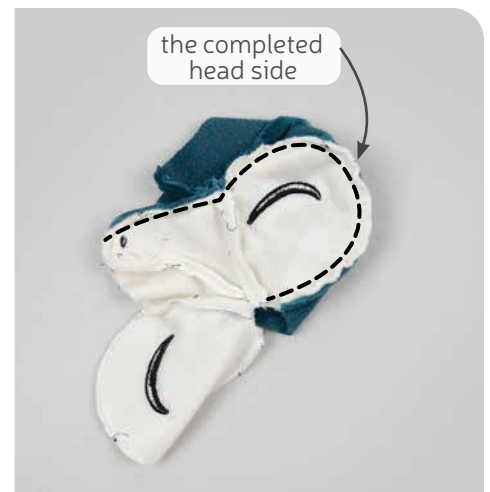
sew desu ne?

| WWW.CHOLYKNIGHT.COM |



10. ATTACH THE HEAD TOP (FRONT SIDE)

- Now flip over your work. The next step is easier with the **HEAD TOP** fabric (C) on top.
- Take your head top piece and align it with the **EYE PANEL** (A) so the edges go around the curve. This should line up **point 3** around the middle. Make sure right sides are facing and pin the fabrics together.
- Sew the head top to the eye panel from **point 2 to 3**.



11. ATTACH THE HEAD TOP (BACK SIDE)

- To complete the seam, take your **HEAD TOP** fabric (C) and align it with the **EYE PANEL** (A) so **point 4** matches up at the bottom corner. Make sure right sides are facing and pin the fabrics together from **point 3 to 4**.
- Sew the head top to the side from **point 3 to 4**.
- The third photo shows what this might look like from the other side. The head top should be completely attached from **point 1 to 4**.

sew desu ne?

| WWW.CHOLYKNIGHT.COM |



12. SEW THE OTHER SIDE

- Grab the other side of your **HEAD TOP** fabric (C) and align it with the other **EYE PANEL** piece (A). Line up **points 1 through 4**. Make sure right sides are facing and pin the fabrics together.
- Sew the head top to the nose and eye panel going from **point 1 to point 4**. This should leave the bottom open for the neck.



13. TRIM & TURN THE HEAD

- Before turning the head right side out, trim the excess seam allowance at any tight corners and curves. This is helpful where the nose meets the head and also the tip of the nose.
- Turn the head right side out through the opening in the neck. Define the nose with a chopstick or similar turning tool.



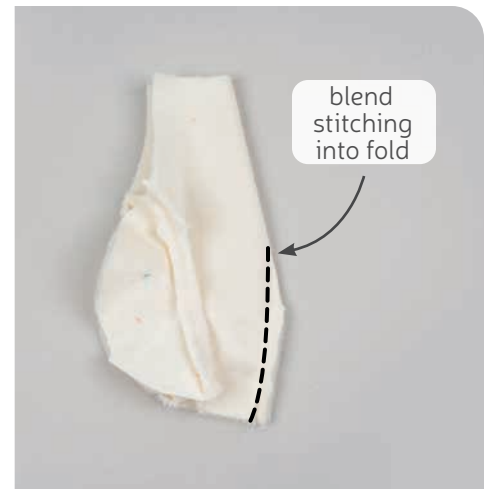
sew desu ne?

| WWW.CHOLYKNIGHT.COM |



14. ATTACH THE INNER LEGS

- Grab your **BELLY** piece (G) as well as your **INNER LEGS** (H). These pieces will join next along the inner curves. But you can also look for the **numbered points** for help with alignment: **points 8 and 9**. There's also a **notch marking** in between.
- Flip over the inner leg piece so now it's right sides facing with the belly. Line up the inner leg with the belly so **points 8 and 9** match up with the **notch marking** in between.
- Sew the inner leg to the belly from **point 8 to 9**, then repeat with the other inner leg on the other side.



15. SEW THE BELLY DART

- The belly has a **dart** along the center bottom, which is the wedge shape marked on the paper pattern.
- To sew it, start by folding the fabric along the point of the **dart**. Make sure right sides are facing and pin the fabrics together.
- Sew the **dart** starting at the opening and work your way toward the fold of the fabric. Try to blend your stitching into the fold for a smooth transition and a rounder finish to the plush.

DARTS:

A wedge-shaped gap found in a pattern. When sewn in fabric, it creates a tuck in the fabric and develops a 3D shape. The diagonal sides of the wedge are the **LEGS**; these are matched up and sewn to the **POINT** of the dart.

sew desu ne?

| WWW.CHOLYKNIGHT.COM |

16. ATTACH THE ACCENT LEGS

- a.** Grab your **BODY BACK** (E) and **LEG** (F) pieces. These pieces will join together along the curved edges as shown. But you can also look for the **numbered points** and **double notches** for help with alignment. Look for **points 8 and 9**.
- b.** If you need it, take this time to mark **points 8 and 9** on your leg fabric.

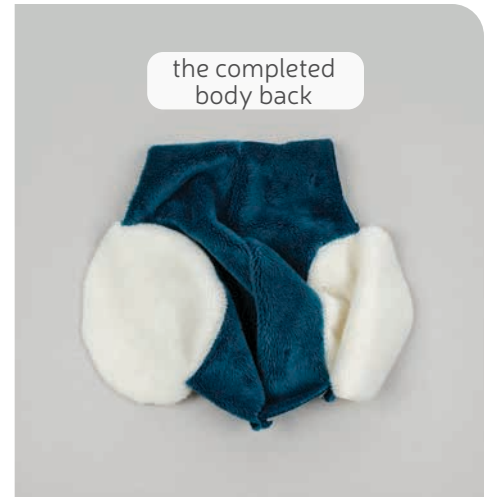


- c.** Take your body back fabric and bend the curved edge to fit around the leg. Make sure right sides are facing and **points 8 and 9** match up. The **double notches** will match up in between.
- d.** Sew the body back to the leg from **point 8 to 9**.
- e.** Open up the pieces when complete
- f.** Repeat this with your other body back piece and other leg piece so you have a matching pair.



sew desu ne?

| WWW.CHOLYKNIGHT.COM |

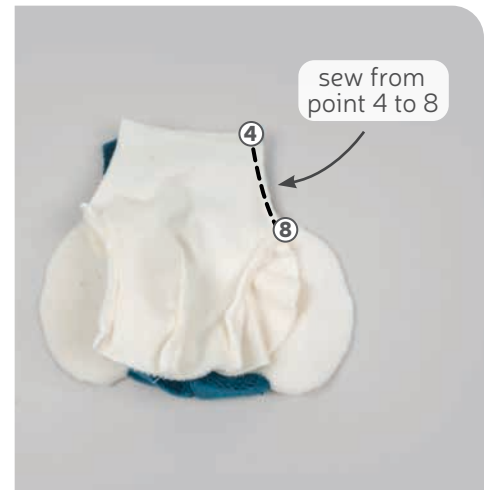


17. SEW THE CENTER BODY BACK

- Grab your two **BODY BACK** pieces so far (E & F). Align them with right sides facing and the center back edge matching up. This is also the edge marked with the **numbered points 6 and 10**. Pin the body back pieces together from **point 6 to 10**.
- Sew the body back pieces together from **point 6 to 10**.
- Open up the body pieces when complete.

18. SEW THE BODY SIDE

- Grab your **BELLY** piece from before (G & H). This belly piece will join all the way around the sides and bottom of the body. Experts can do this all in one go, but we're going to break it down into several steps. Start by lining up the side of the belly and the body. This should go from **point 4 to 8**. Make sure right sides are facing and pin the fabrics together.



- Sew the belly to the body from **point 4 to 8**.

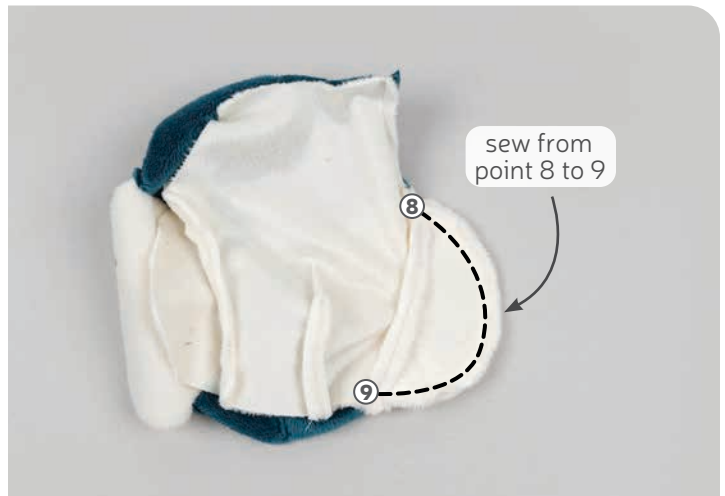
sew desu ne?

| WWW.CHOLYKNIGHT.COM |



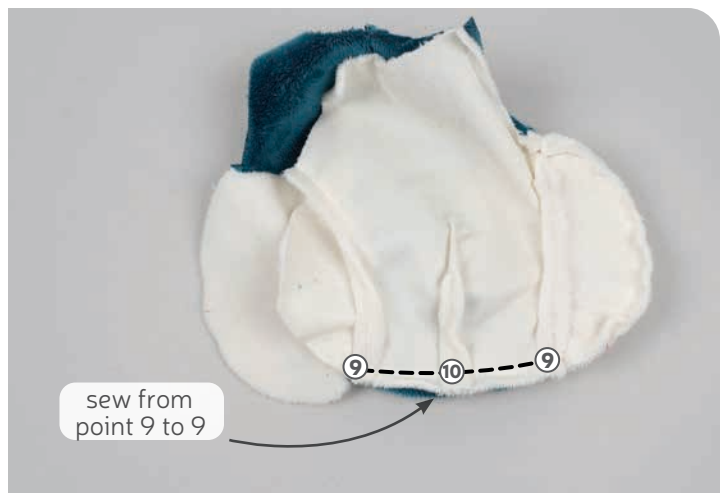
19. SEW THE LEG

- Now grab your **INNER LEG** (H) and align it with the **OUTER LEG** (F). This should match up **points 8 and 9**. Make sure right sides are facing and pin the fabrics together from **point 8 to 9**.
- Sew the inner leg to the outer leg from **point 8 to 9**.



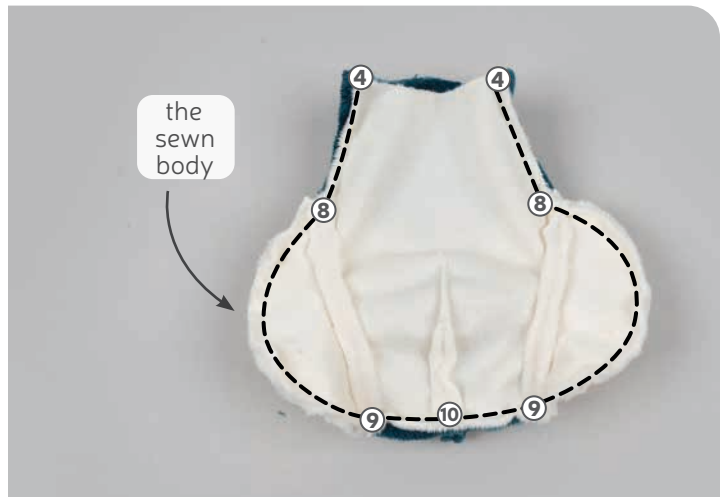
20. SEW BETWEEN THE LEGS

- Grab your belly and line up the bottom edge between the legs. Line it up with the body back from **point 9 to 9** with **point 10** in the middle. Make sure right sides are facing and pin the fabrics together.
- Sew belly to the body from **point 9 to 9** with **point 10** in the middle.



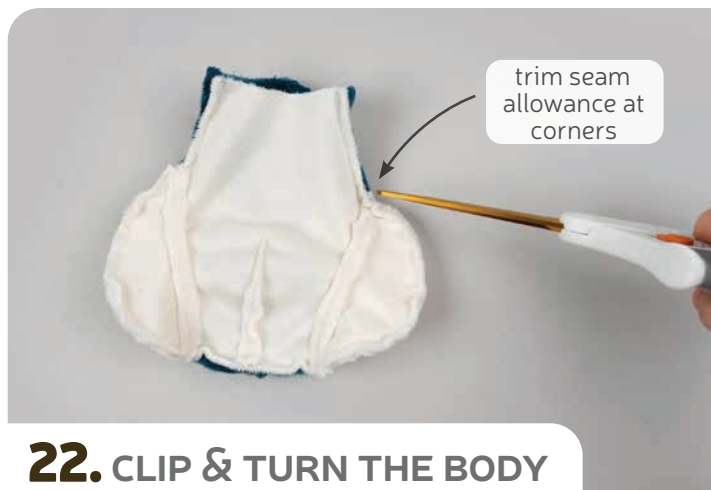
sew desu ne?

| WWW.CHOLYKNIGHT.COM |



21. SEW THE OTHER SIDE

- Repeat steps 18 and 19 but going up in the other direction, around the leg and up the side. Line up the **BELLY** with the **BODY** so **points 4, 8, and 9** match up. Make sure right sides are facing and pin the fabrics together.
- Sew the belly to the body from **point 9 to 8** around the leg, then **point 8 to 4** up the side. This should completely attach the body. Leave the neck open for the head later.



22. CLIP & TURN THE BODY

- To turn the body right side out, make a clip into the corners at **point 8**. This will help the piece turn more cleanly.
- Turn the body right side out through the opening in the neck.

sew desu ne?

| WWW.CHOLYKNIGHT.COM |



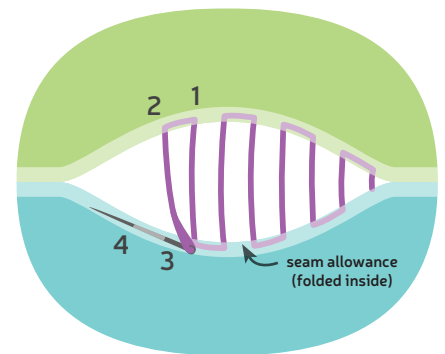
23. STUFF THE HEAD



- a.** Grab your head from before and stuff it to prepare for attaching. Start by getting the tip of the nose nice and full. It helps to use small bits of stuffing here so the nose stays looking pointy and doesn't deflate over time.
- b.** Continue filling up the rest of the head until it's firm and there are no wrinkles in the fabric.
- c.** Next, start stuffing the body. It helps to fill up the body about halfway, then when the body is halfway stuffed, sneak extra stuffing into the legs. The stuffing in the body will help hold the leg stuffing in place.
Continue stuffing the body until you've worked all the way up to the neck.



24. ALIGN THE HEAD



- a.** Take your stuffed head and align it over the body. You can use the **numbered points** to help align the head over the body. **Point 6** should match up at the center back of the neck, **point 4** should match up at the sides, and **point 11** should match up at the center front.
- b.** From here start ladder stitching your head to the body. Thread a hand sewing needle and knot the end. Take a stitch into **point 6** on the neck, then go across and take another stitch at **point 6** on the body. Continue working around until you get to **point 4** at the side. Use long basting stitches to attach the head so you can double check the placement.

sew desu ne?

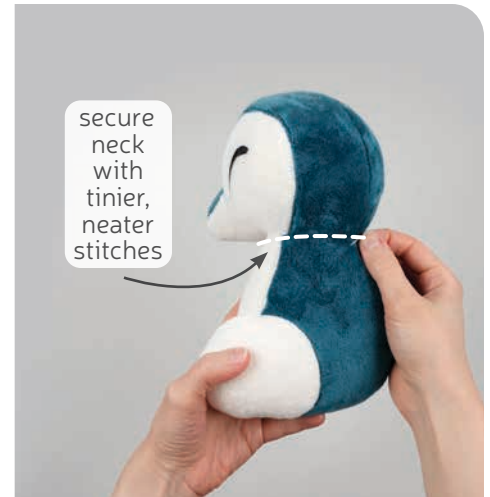
| WWW.CHOLYKNIGHT.COM |

25. CLOSE UP THE NECK

- a.** When you come back around to **point 6** at the back, stop a little short. Check that your neck doesn't need some extra stuffing. If your head is floppy it might help to add a little extra before the neck is closed.

When you're done, check that you like the placement of the head and it isn't twisted or tilted.

- b.** When you like the result, sew around the head again. This time use tinier, neater stitches for a more secure join.



26. ATTACH THE TOE TO THE FOOT

- a.** Grab your foot and **TOE** pieces (I & J). These pieces will join together along the inner edges as shown, but you can also look for the **notch markings** for help with alignment.
- b.** Line up your foot piece with the toe so right sides are facing and the notches match up.
- c.** Sew the foot to the toe along the **notched edge**. Repeat this with your other foot and toe pieces for two total.

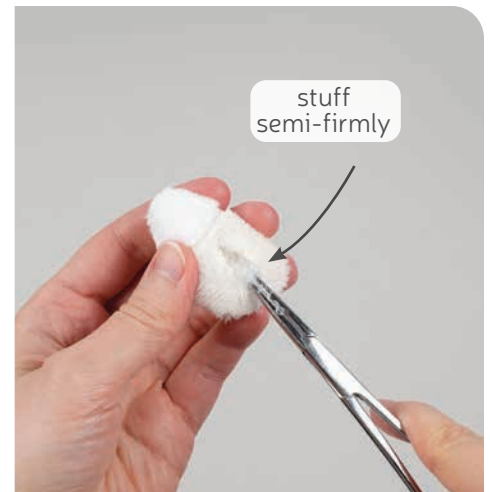
sew desu ne?

| WWW.CHOLYKNIGHT.COM |



27. SEW THE FOOT

- Grab your sewn **FOOT** (I & J) fold it in half lengthwise. This should match up the toe seam from before. Make sure right sides are facing and pin the fabrics together.
- Sew the edges of the foot starting at the fold and going around to the other fold. Try to blend your stitching into the fold for a smooth transition and cleaner finish, similar to the previous **darts**.
- Trim the excess seam allowance around the tip of the toe to reduce bulk. Repeat this step with your other foot piece so you have two total.



28. CLIP & TURN THE FOOT

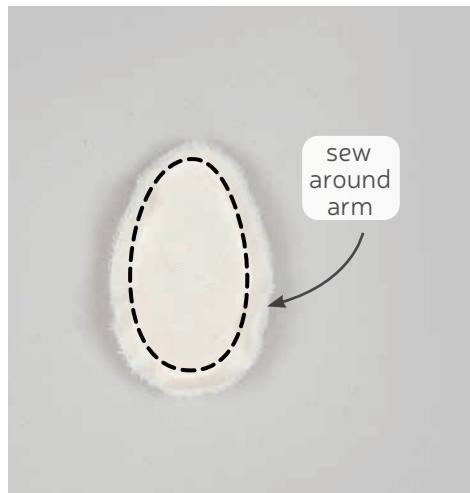
- To turn the foot, cut a short slit into one layer of the **FOOT** fabric (I) only. Cut it around the center, but you can also look for the **cutting guide** on the paper pattern for extra help.
- Turn the feet right side out through the opening you cut.
- Stuff the feet lightly with stuffing. Use just enough so they take shape.

sew desu ne?

| WWW.CHOLYKNIGHT.COM |

29. ATTACH THE FEET

- a. Grab your sewn and stuffed **FEET** (I & J). Align the foot along the bottom of your plush. The toes should point outward and the cut side should face the plush. The heel of the foot should align around the leg seam at **point 9**.
- b. Ladder stitch the foot to the body going around the cut you made before.

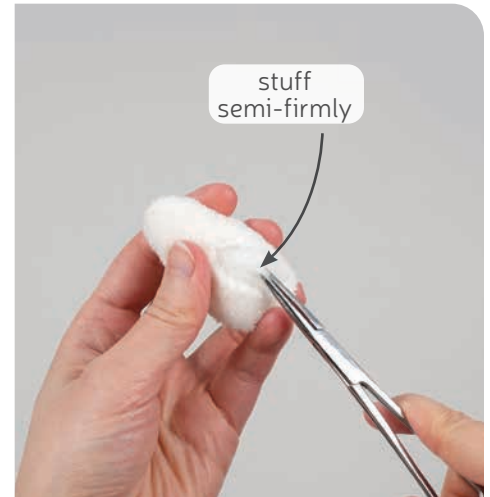


30. SEW THE ARMS

- a. Grab your **ARM** pieces (K). Take two of them and align them with right sides facing and the raw edges matching up. Pin the fabrics together.
- b. Sew the arms together all the way around the shape.
- c. Trim the excess seam allowance around the curves to reduce bulk. Repeat this with your other two arm pieces so you have two complete arms total.

sew desu ne?

| WWW.CHOLYKNIGHT.COM |



31. TURN & STUFF THE ARMS

- To turn the **ARMS**, cut a short slit into one layer of the fabric only. Cut it centered around the top end. But you can also look for the **cutting guide** on the paper pattern for extra help.
- Turn the arms right side out through the opening you cut.
- Stuff the arms lightly with stuffing, just enough so they take shape and puff out.



32. ATTACH THE ARMS

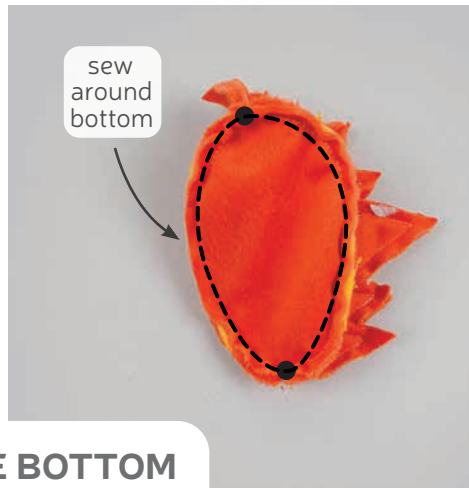
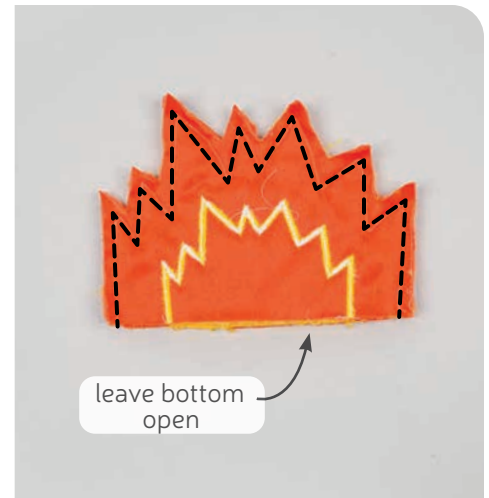
- Take your sewn and stuffed **ARMS** and align them onto the belly of your plush. Here they're placed right against the side seam and about 1/4" down from the neck seam. But you can also look for the **stitching guide** on the **BELLY** (G) paper pattern for help. Make sure the cut side of the arm is facing the plush.
- Attach the arms using a ladder stitch. Sew around the shoulder area by sewing close to the arm seam.
- Then for underneath the arm, flip the arm up and ladder stitch underneath. This should completely hide the cut from before. Repeat this with your other arm for two total.

sew desu ne?

| WWW.CHOLYKNIGHT.COM |

33. SEW THE FLAMES

- Grab your **FLAME** pieces (L). Align them with right sides facing and the raw edges matching up.
- Sew the pieces together along the pointed edges. Leave the long straight edge free for turning the piece right side out.



34. ATTACH THE FLAME BOTTOM

- Grab your **FLAME BOTTOM** piece (M). Take the open end of your **FLAMES** (L) and align it with the flame bottom. You can use the **pattern markings** for help with alignment. The seams at the top and bottom of the flames will align with the **filled circle markings** on the bottom piece. Make sure right sides are facing and pin the fabrics together.
- Sew the flame bottom to the flame all the way around, going through the **filled circle markings**.
- Trim the excess seam allowance at the tight corners and curves. This will reduce bulk at the outer corners so the points don't look lumpy. It will also increase flexibility at the inner corners so the piece turns more cleanly.

sew desu ne?

| WWW.CHOLYKNIGHT.COM |



35. TURN & STUFF THE FLAMES

- To turn the flame right side out, cut a short slit into the center of the **FLAME BOTTOM** piece only (M). But you can also look for the **cutting guide** found on the paper pattern.
- Turn the flame right side out through the opening you've cut.
- Stuff the flames semi-firmly with stuffing. It's especially important to get small bits in the tips of the flames so they stay looking pointy and don't bend and deflate over time.

35. ATTACH THE FLAMES

- Take your stuffed **FLAMES** and align them onto the back of your plush. Align them so it goes down the length of the center back seam, right beneath the neck seam.
- Ladder stitch the flames to the back by going around the bottom seam from step 34.

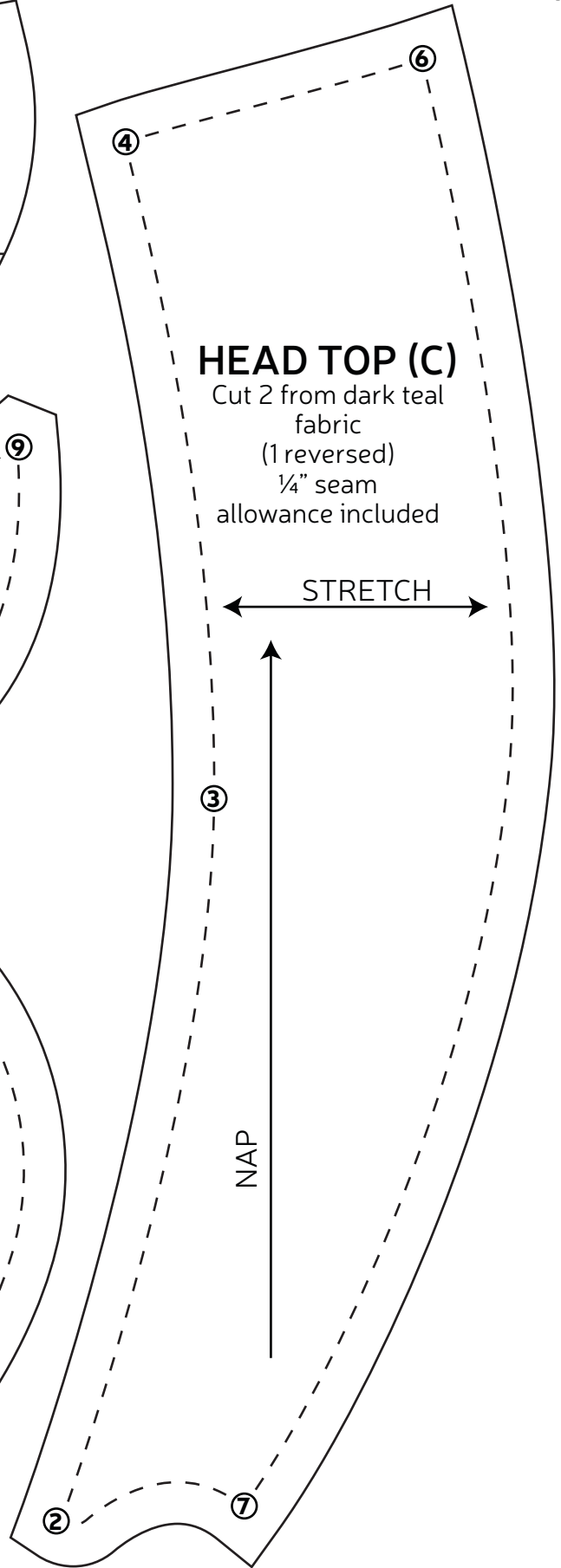
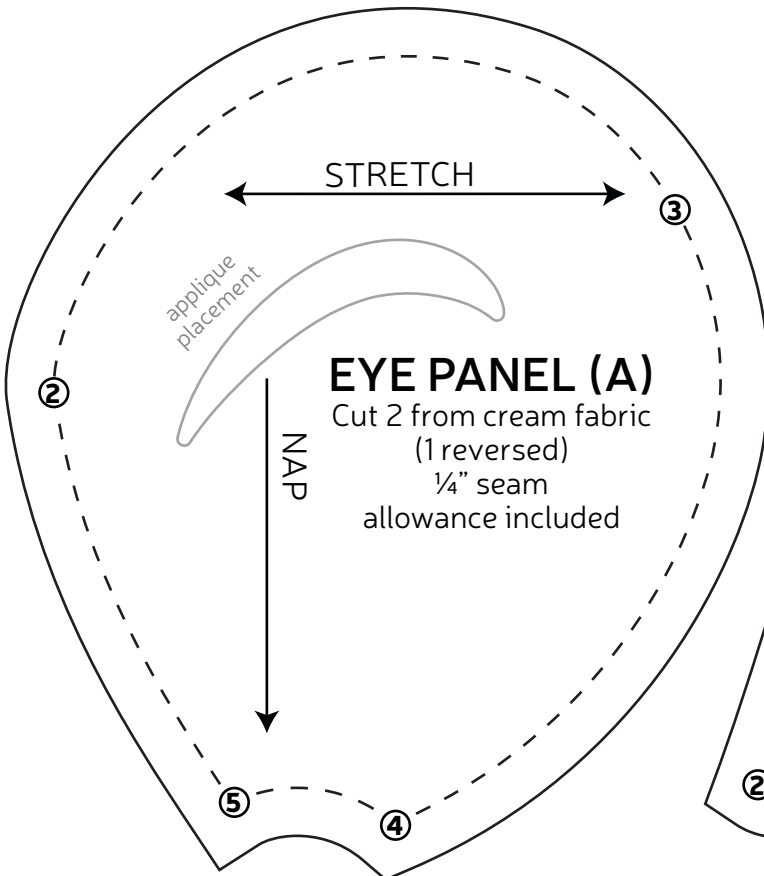
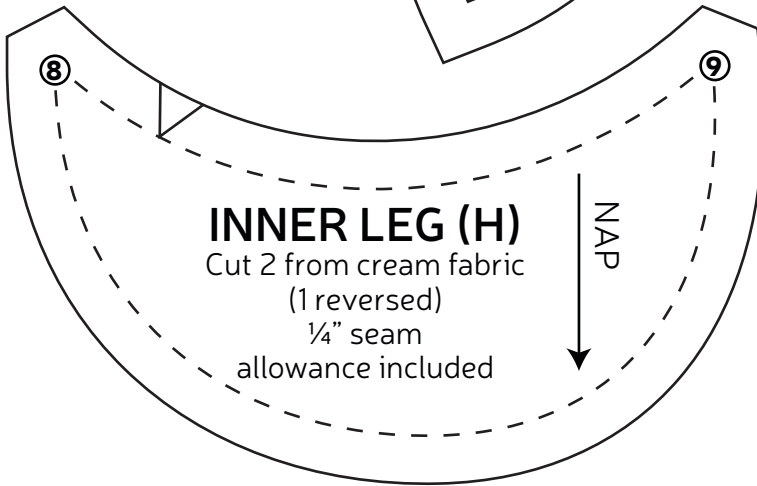
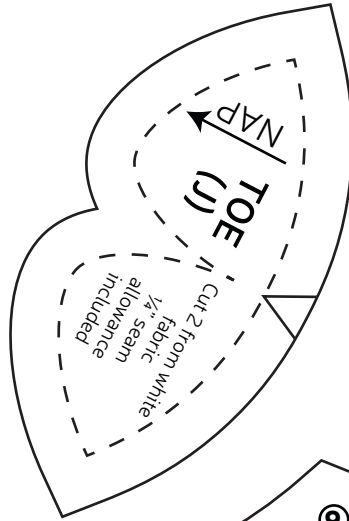


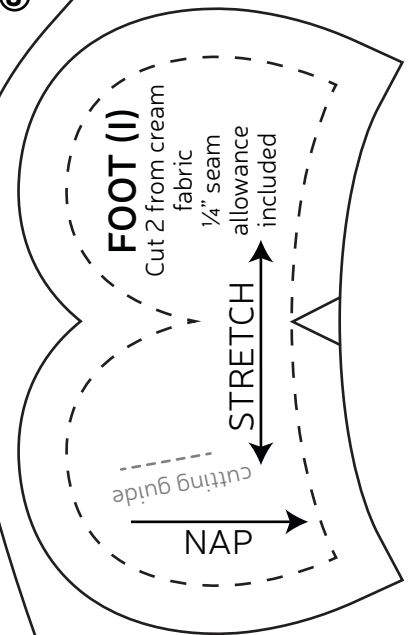
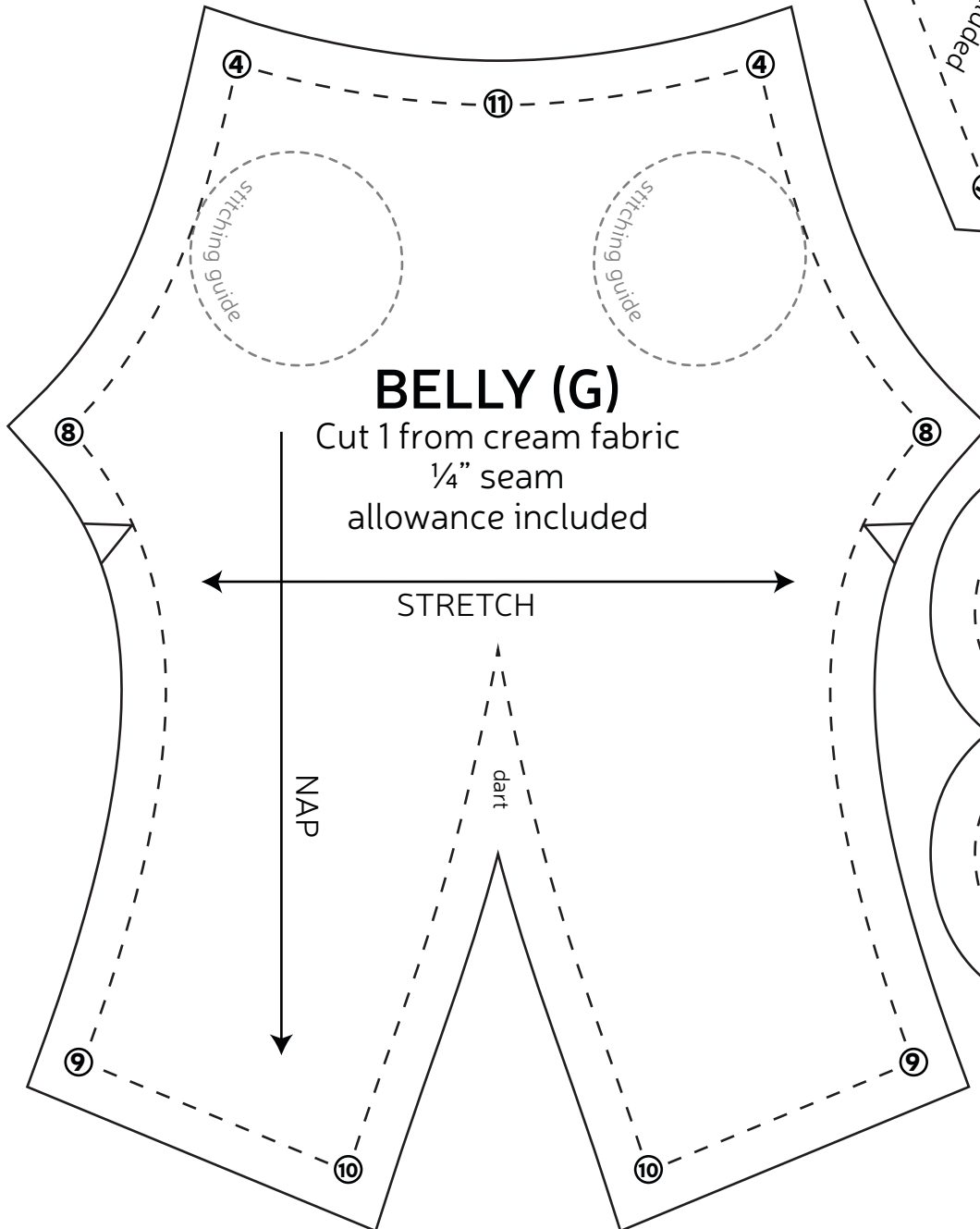
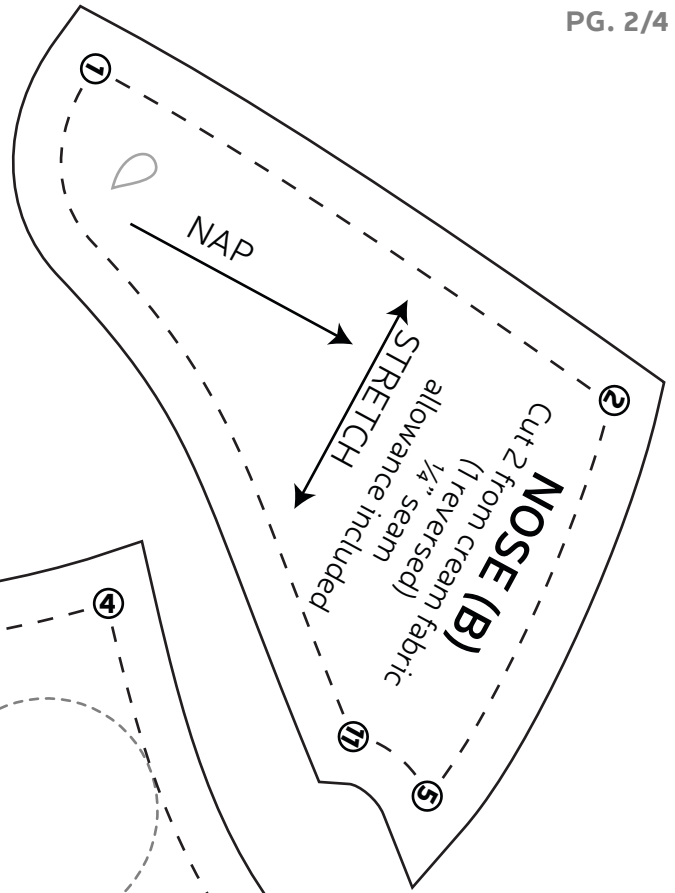
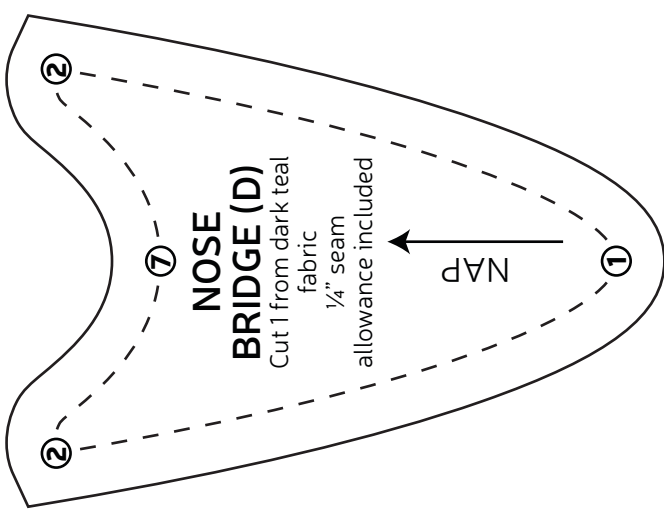
sew desu ne?

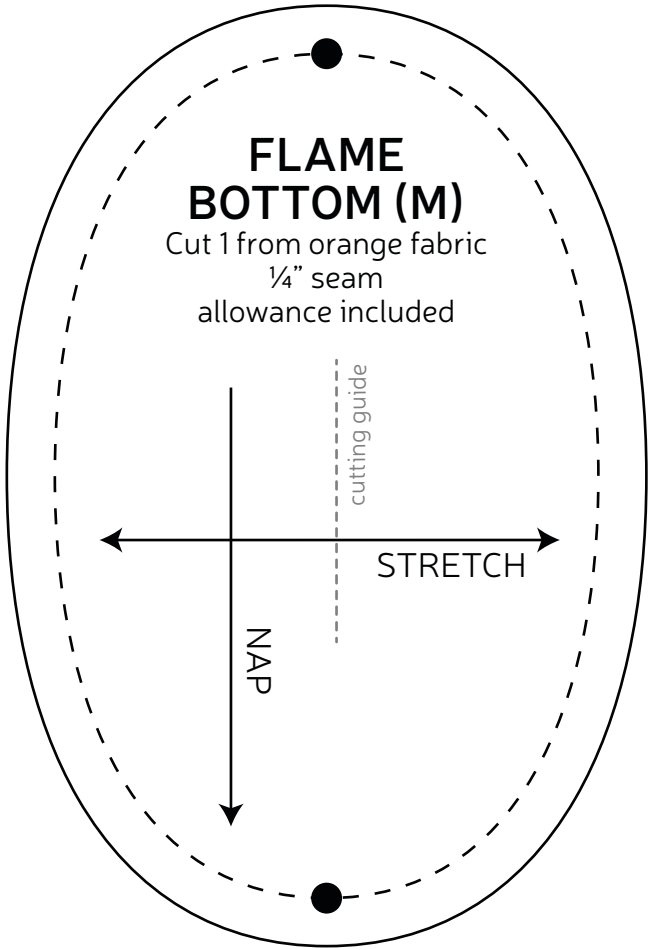
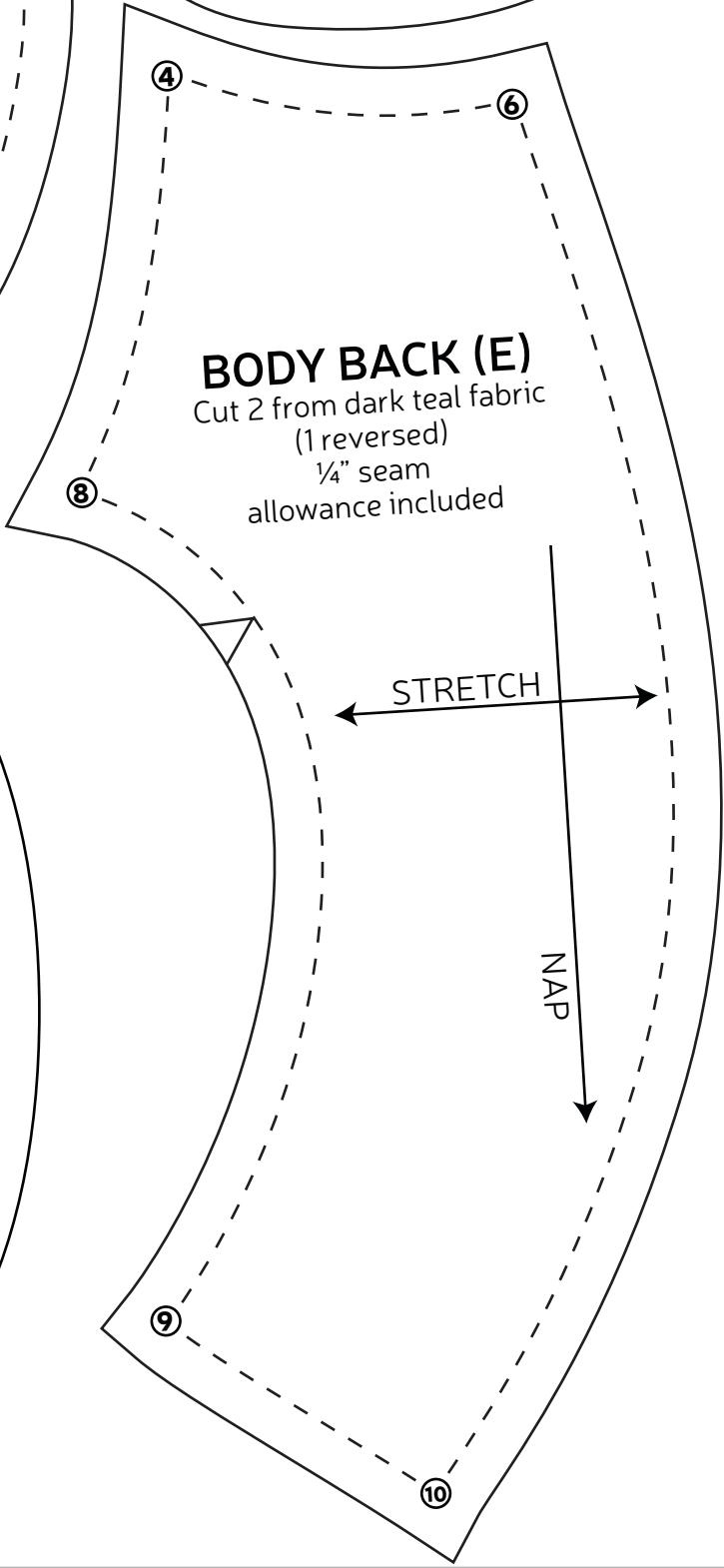
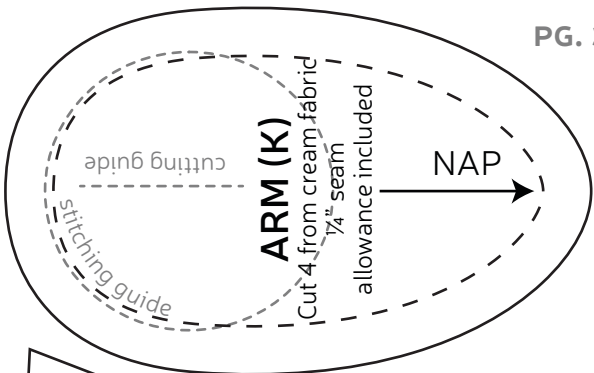
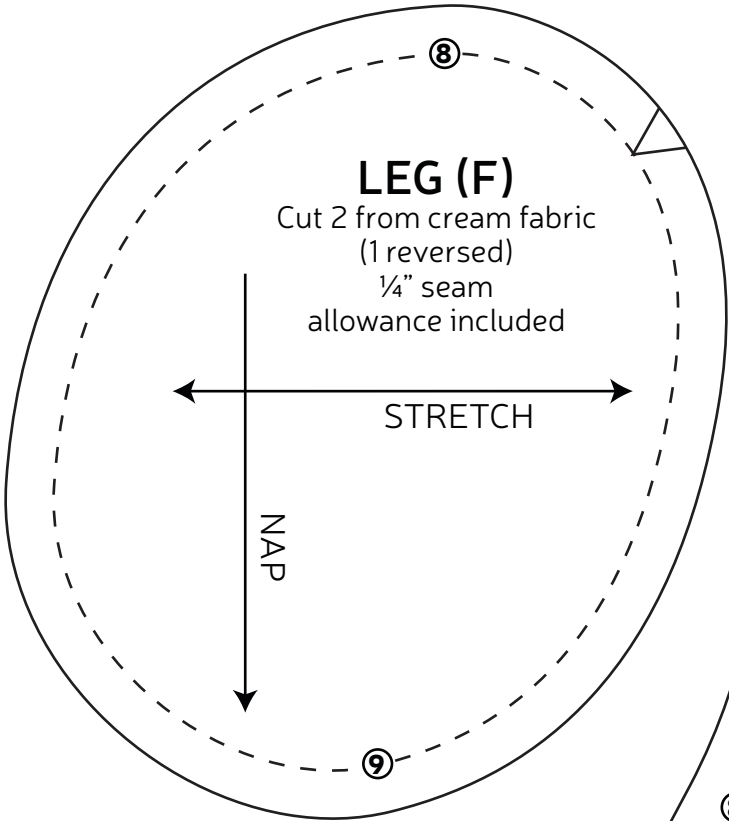
| WWW.CHOLYKNIGHT.COM |

TEST SQUARE 2"

measure this square to
be sure you've printed
at the proper
proportions







FLAME (L)

Cut 2 from orange fabric
(1 reversed)
1/4" seam
allowance included

NAP

STRETCH

EYES

applique
trace & cut 1 each
from black

NOSTRILS

applique
trace & cut 1 each
from black



INNER FLAMES

applique
trace & cut 1 each
from yellow

