

SUSSIE MAGPIE

Pet Birds Plush

SEWING PATTERN HACK



a free sewing pattern by



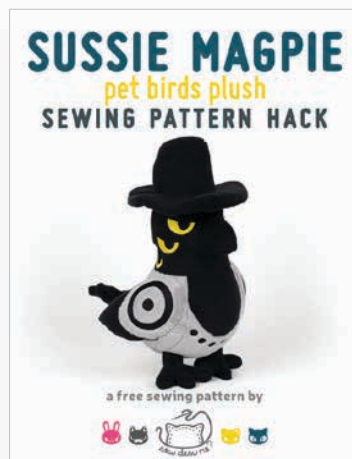
sussie magpie pattern hack

This pattern hack is meant to work alongside my **PET BIRDS PLUSH SEWING PATTERN**. It is a set of extra templates that replaces the head and wing from the original pattern, while also adding a hat! With those together you can create the adorable **SUSSIE** magpie from K-pop Demon Hunters! This demonic magpie is heavily influenced by traditional working class Korean folk paintings, called *minhwa*. Magpies often represented the working class, while tigers represented the aristocracy. So Sussie's exasperated reactions to Derpy are a subtle way of poking fun at the ruling class.

In these instructions you'll find a guide for sewing the head, wing, and hat and how they're incorporated into the original design.



+



=



NEW:
head



NEW:
hat



NEW: eyes
& body
markings



NEW:
wings

sew desu ne?

| WWW.CHOLYKNIGHT.COM |

DIFFICULTY:

This version has about the same difficulty as the original. The head goes a bit faster because it's only two pieces, but most of the body is the same. There is also the added hat.

MAKES:

ONE PLUSH: About 9" tall from bottom of feet to top of head (12" if you include the hat), 7" wide from each side of wing, and 7" long from front of face to back of body.

SKILLS USED:

- ladder stitch
- fusible web applique
- sewing curves (straight to curved pieces, inner to outer curves, outer to outer curves, etc.)
- darts
- matching notches & points
- basting
- gathering; gathering stitch
- using wire (for the feet)

FABRICS & NOTIONS:

- 1/3 yd. of light gray fabric for main body
- 1/4 yd. of black fabric for head, chest, tail, beak, and hat
- 4" x 4" of yellow applique fabric for eyes
- 6" x 6" of black applique fabric for pupils, eyelids, and body markings
- 7" x 7" of light or heavy duty fusible web
- **OPTIONAL** 7" x 7" of fusible web interfacing for hat
- basic sewing tools (sewing machine, scissors, iron, ironing board, needles, pins, fabric marker, seam ripper, point turner or chopstick)
- matching sewing thread
- poly-fil stuffing
- **WIRING SUPPLIES FOR FEET:**
 - about 50" of 1" wide scrap fabric for wrapping wire
 - jewelry pliers
 - wire cutter
 - hot glue
 - 15" of 12 gauge jewelry wire



SUGGESTED MAIN FABRICS:

MINKY OR FLEECE

Medium weight, plush fabrics with about 20%-30% stretch along the crosswise grain work best for this project. The varieties shown to the left are some good options and names to look for. Try to avoid heavyweight versions of fleece that are intended for outdoor apparel or they may cause trouble for the detailed areas.

You can also use non-stretch fabrics (such as felt), but be aware that the curves will be more difficult to sew and the result will look different. The plush will become more elongated and the edges will look sharper.

10" of minky stretches to 13"
= 30% stretch

MINKY

VS.

FELT



FUSIBLE WEB:

- Fusible web adhesive is a sheet of adhesive with a paper backing.
Not to be confused with fusible interfacing, which is adhesive attached to a fabric/fiber backing.
- Some common brands are **Pellon** & **HeatnBond**
- In countries outside the US, it may also be known as **bondaweb**
- It comes in **light** and **heavy duty** varieties. Lightweight strength is meant for applique you intend to sew later. Heavy duty versions are for a no-sew bond. If you try to sew them later your machine might have trouble penetrating the glue.

APPLIQUE FABRICS:

- Good applique fabrics include **flannel, cotton, felt, minky**, and **fleece**.
- Flannel and cotton are best for detailed applique with a lot of layers because they're thinner. Meanwhile felt, minky, and fleece are better for simpler applique like body markings.
- **Flannel** is used in the example instructions (page 7).

sew desu ne?

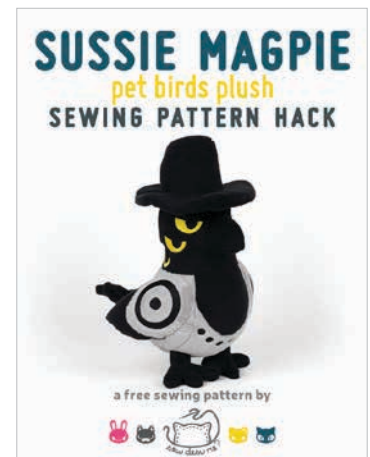
| WWW.CHOLYKNIGHT.COM |

FABRIC CUTTING GUIDE:

Follow the cutting guide below for what colors to cut from the pattern pieces from the **PET BIRD PLUSH SEWING PATTERN**. Above are the original pieces and below are new pattern hack pieces.

The new pieces have the same letter as the original, but a new prefix: **S FOR SUSSIE**. For example the **HEAD SIDE (A)** has been changed to **S-A FOR SUSSIE**.

LABEL	NAME	COLOR
ORIGINAL PATTERN		
D1	BASIC BODY	LIGHT GRAY
E2	CONTRAST CHEST BELLY	LIGHT GRAY
E3	CONTRAST CHEST	BLACK
G2	BROAD TAIL FEATHERS	BLACK
K1	LARGE STRAIGHT BEAK SIDE	BLACK
K2	LARGE STRAIGHT BEAK BOTTOM	BLACK
M	LEG	BLACK
O1	FOOT TOP	BLACK
O2	FOOT BOTTOM	BLACK
PATTERN HACK PIECES		
S-A	HEAD SIDE	BLACK
S-P1	WING	LIGHT GRAY
S-P2	WING TIP	BLACK
S-P3	WING BACK	BLACK
S1	HAT CROWN	BLACK
S2	HAT TOP	BLACK
S3	HAT BRIM	BLACK
S4	HAT BOTTOM	BLACK



sew desu ne?

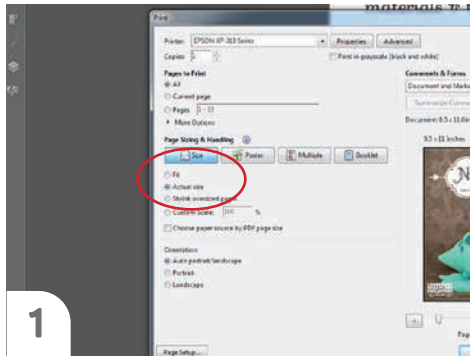
| WWW.CHOLYKNIGHT.COM |

PRINTING THE PATTERN:

Set your computer to print **PAGE 17-20.**

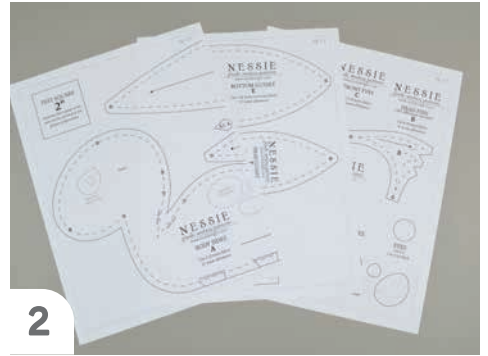
If you're unfamiliar with printing and assembling a .pdf pattern, read the steps to follow.

For the best results, use a .pdf reader like **ADOBE READER**. That's what is shown here and will give you the most control over the settings.



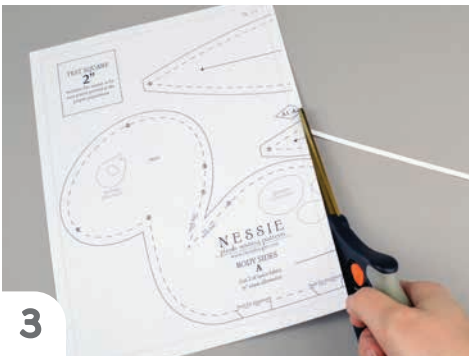
1

At the print dialog box, check the box that says print at "Actual Size" or 100%. Any other selection (such as "Fit to page") will distort the pattern so it's slightly larger or smaller and we don't want that.



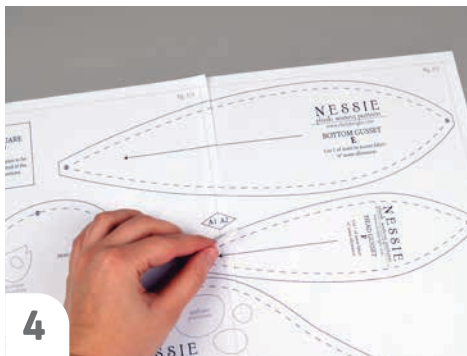
2

Print the pages needed for the file. You might have one or more. Either way, be sure you have the full collection by noting the page numbers in the corner.



3

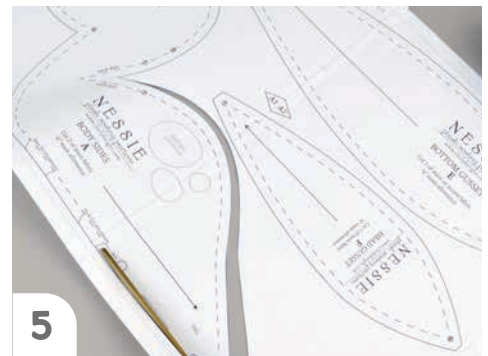
It's likely your printer will have a margin that ensures your image doesn't print to the very edge. Assembly will be easier if you trim off this blank margin edge. This will give you pages that overlap slightly during assembly. If you trim across the gray outline boxes, this will give you pages that don't overlap but rather butt against each other.



4

To line up the pattern pages, match up the corresponding diamond shapes. Each diamond will have a letter, so it's simply a matter of matching A1 to A2, B3 to B4 and so on. The faint gray lines indicate the border of every page, you should be able to line those up as well. When the diamond goes together, tape it in place.

If you have many pages, it's easier to tape up the pages into rows first. Then tape the rows together into a full block.



5

You can trace the patterns onto a different paper, or you can also just cut them straight from the printer paper -- be sure that each piece is fully taped together along the joins so they don't fall apart when you cut them.

sew desu ne?

| WWW.CHOLYKNIGHT.COM |

BEFORE YOU BEGIN:

- Briefly read the project instructions so you know what to expect.
- If desired, mark the cut fabric pieces with the markings and symbols from the pattern. Or wait until the applicable step before transferring.
- Note that a ¼" seam allowance is used throughout the project, which is included in the pattern templates.



Use the new applique templates and **HEAD SIDE (S-A)** to replace the head from the original **PET BIRDS PLUSH** pattern.

1. FUSE THE EYE APPLIQUE



- Grab your fusible web and applique templates. Trace the pieces for the eyes. You should have:
 - **eyes** (6, yellow)
 - **pupils** (6, black)
- Fuse the bumpy (adhesive) side of the fusible web onto the applique fabrics.
- Cut out your applique pieces and grab your **HEAD SIDE** piece (S-A). Grab the **eye** applique piece. Set your paper pattern on top of the head side piece. Align the applique piece on top where the placement markings are. Next, carefully pull the paper pattern away while holding the applique piece in place.
- Fuse the first applique layer with your iron. Use a press cloth, such as a scrap piece of cotton. This will help protect any polyester for fuzzy fabrics from melting or scorching.

sew desu ne?

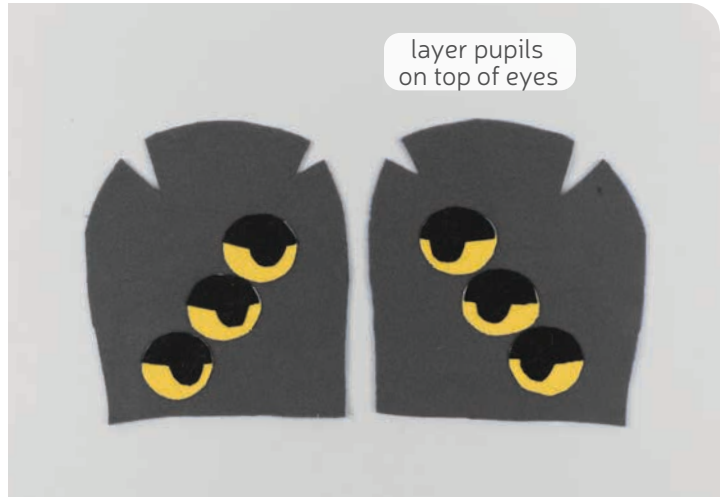
| WWW.CHOLYKNIGHT.COM |

2. FINISH THE EYE APPLIQUE

- a. Add the **pupil** pieces next. Use the paper pattern and photos as a placement guide. This should align along the top of the eyes to create the exasperated look.

If you used heavy duty fusible web, you can keep the pieces fused without sewing, or you can sew them in place a number of ways. I've used a zigzag stitch here.

→ Refer to page 9 for some other applique options.



3. APPLIQUE THE BELLY & WING

→ Also take this time to applique the belly and wing markings.

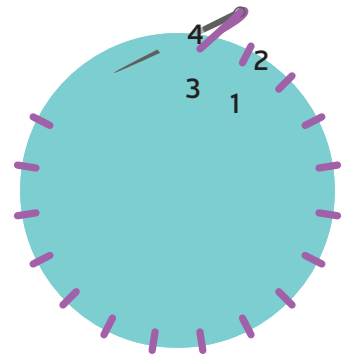
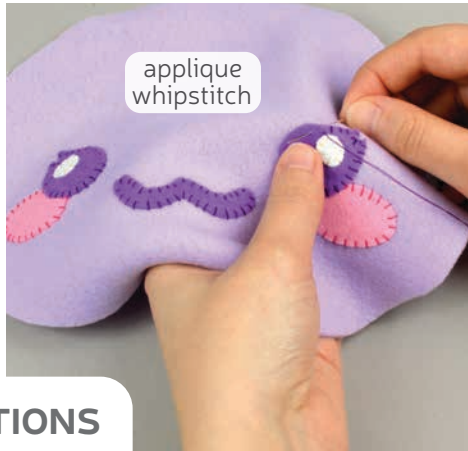
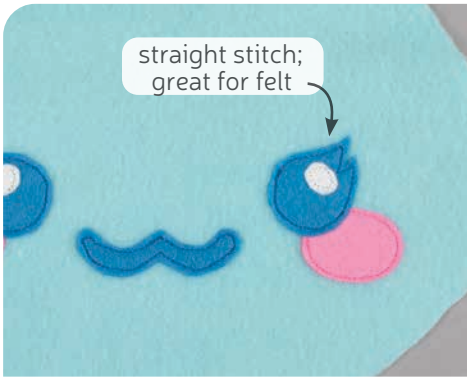
- a. The **BELLY** (E2) gets **dot marking** applique (6, black).
- b. And the **WINGS** (S-P1) get **circle markings** applique (4, black).

Follow the same steps as before, tracing the design and fusing it to your main fabrics.



sew desu ne?

| WWW.CHOLYKNIGHT.COM |



4. OTHER APPLIQUE OPTIONS

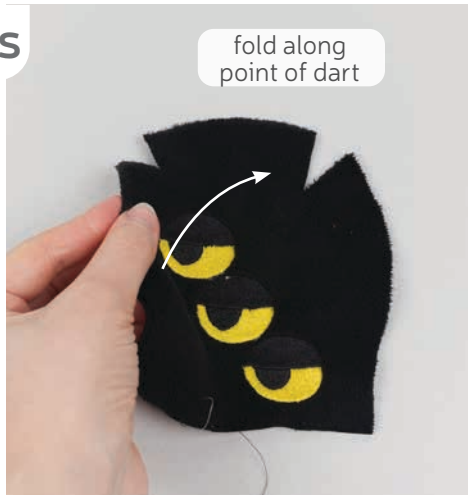
- Other options for applique include a straight stitch. That's done by sewing around the edge of the applique pieces with a straight stitch using matching thread -- about 1/8" in from the edge.
- You can also applique by hand using a whipstitch. Thread a hand-sewing needle with some matching thread and knot it. Bring the thread up from the back of the project; about 1/8" in from the edge of the applique shape. Bring it down perpendicular from the curve, just outside of the applique shape. This completes one stitch.
- For the next stitch, bring the needle back up about 1/8" away from the previous stitch and 1/8" in from the edge just as in the first stitch. Once again, bring it down just outside the applique shape. Continue this way until you've sewn around the shape.



The following steps 5-6 will replace steps 5-12 from the original **PET BIRDS PLUSH PATTERN** using the new head pieces.

5. SEW THE HEAD DARTS

- Grab your **HEAD SIDE** pieces (S-A). These pieces have two **darts** along the upper edges. They're the small wedge shape labeled on the paper pattern. To sew them, start by folding the fabric along the point of the **dart** so the slanted edges match up and right sides are facing. Pin the fabrics together.



- Sew the **dart** starting at the opening and work your way toward the fold of the fabric. Try to blend your stitching into the fold for a smooth transition and a rounder finish to the plush. Repeat with both darts on the head side piece. Then repeat again with the other head side piece so you have a matching pair.

sew desu ne?

| WWW.CHOLYKNIGHT.COM |

6. SEW THE HEAD

- a. Grab your two **HEAD SIDE** pieces (S-A). Align them with right sides facing and the raw edges matching up.
- b. Sew the pieces together along the front edge. Stop when you reach the back **dart**. This should start at **point 7** and stop before you reach **point 8**.
This is similar to step 9 from the original bird pattern where the back is left open. The difference is these head pieces are shaped differently.



Refer to steps 13-25, then 29-30 from the original **PET BIRDS PLUSH PATTERN** to sew the body. Refer to the original for more detailed instructions, but there is a brief overview below:

7. SEW THE BODY

- a. **Steps 13-14:** Sew the **BODY** (D1) **darts**.
Step 15-18: Attach the **TAIL** (G2) to the body.
Step 19-20: Sew the **BELLY** (E2) **darts** and attach the **CHEST** (E3)
Step 21-22: Attach the tail to the belly.
Step 23-25: Attach the belly to the body.
Step 29: Attach the head to the body at the neck. **Point 7** should align at the center front and **point 8** will align at the center back just like in the original.
Step 30: Sew the center back.



sew desu ne?

| WWW.CHOLYKNIGHT.COM |



Refer to steps 31-40 from the original **PET BIRDS PLUSH PATTERN** to stuff the body and attach the beak. Refer to the original for more detailed instructions, but there is a brief overview below:

8. ADD THE BEAK

- a. Steps 31-36:** Turn the body, stuff it, and ladder stitch it closed.
- b. Step 37-40:** Sew and attach the **BEAK** (K1-2).



The following steps 9-10 will replace step 59 from the original **PET BIRDS PLUSH PATTERN** using the new wing pieces.



9. SEW THE WING TIPS

- a.** Grab your **WING** (S-P1) and **WING TIP** pieces (S-P2). These pieces will join together next along the inner edges, but you can also look for the **notch markings** for help with alignment.
- b.** Stretch and bend the wing tip piece to fit around the wing, matching up the **notches**. Make sure right sides are facing and pin the fabrics together.
- c.** Sew the wing tip to the wing along the **notched edge**. Repeat this with your other wing and wing tip pieces to create a matching pair.

sew desu ne?

| WWW.CHOLYKNIGHT.COM |

10. SEW THE WINGS

- a. Grab your **WING BACK** pieces (S-P3). Line up these pieces with your wings so far that way right sides are facing and the raw edges match up. Pin the layers together.
- b. Sew the wing pieces together all the way around. Repeat with your other wing pieces so you have a matching pair.



Refer to steps 43-48, then 51-58 from the original **PET BIRDS PLUSH PATTERN** to sew and attach the **FEET** (M & O). Then refer to steps 60-61 to turn, stuff, and attach the **WINGS** (S-P). Refer to the original for more detailed instructions, but there is a brief overview below:

11. ATTACH THE FEET & WINGS

- a. **Steps 43-48:** Sew the **FEET** (O1 and O2).
- b. **Steps 51-58:** Attach the feet.
- c. **Steps 60-61:** Turn, stuff, and attach the **WINGS** (S-P).



sew desu ne?

| WWW.CHOLYKNIGHT.COM |

12. FUSE THE INTERFACING

- a.** If you're using fusible interfacing for your **HAT BRIM** (S3), take this time to attach it now.
- Fuse the interfacing to the wrong side of the hat brim fabric following the manufacturer's instructions. That usually involves ironing the interfacing with a medium heat for about 5 seconds for each section. Move around the interfacing until every section is fused and secure.



13. SEW THE HAT CROWN

- a.** Grab your **HAT CROWN** piece (S1). Fold it in half widthwise to match up the straight edges. If you're watching the *pattern markings*, that should line up the *square marking* at the top corner and the *circle marking* at the bottom. Make sure right sides are facing and pin the fabrics together.
- b.** Sew the straight side of the hat crown, going from the *square marking* to the *circle marking*.

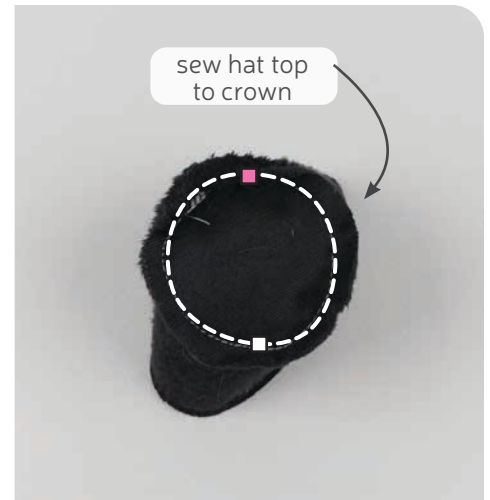


sew desu ne?

| WWW.CHOLYKNIGHT.COM |

14. ATTACH THE HAT TOP

- a.** Grab your **HAT TOP** piece (S2). Take the smaller opening of the **HAT CROWN** (S1) and align it around the hat top. You can also look for the **pattern markings** for help with alignment. This should match up the **filled square marking** at the top and the **open square marking** at the bottom with the crown seam. Make sure right sides are facing and pin the edges together.



- b.** Sew the hat crown to the hat top going through the **square markings**.

15. ATTACH THE BRIM TO THE CROWN

- a.** Grab your **HAT BRIM** piece (S3). The inner circle of the brim will attach around the bottom edge of the crown.
- b.** If you're watching the **pattern markings**, first find the **open circle marking** along the inner edge of the brim.
- c.** Then take that edge and align it with the **open circle marking** on the crown at the seam. Make sure right sides are facing. Pin the edges together all the way around, and the **filled circle marking** should line up on the other side.
- d.** Sew the brim to the hat crown all the way around, going through the **circle markings**.



sew desu ne?

| WWW.CHOLYKNIGHT.COM |



16. ATTACH THE BOTTOM

- Grab your **HAT BOTTOM** piece (S4). Take your hat so far and align it over the bottom with right sides facing and the outer edges matching up. Pin the fabrics together.
- Sew the hat to the bottom all the way around.
- To turn the hat, cut a short slit into the middle of the hat bottom piece only. You can also refer to the **cutting guide** on the paper pattern for extra help.



17. TURN & STUFF THE HAT

- Turn the hat right side out through the opening you cut.
- Flatten out the hat along the brim so the fabrics are even. Then top stitch the hat along the brim seam from step 15. Try to stitch directly into the seam from the right side. This is also called **STITCHING IN THE DITCH**.
- Use the **opening for turning** from before to stuff the hat semi-firmly. Keep it light near the opening and that will make it easier to attach to the bird.

sew desu ne?

| WWW.CHOLYKNIGHT.COM |

18. ATTACH THE HAT

- a. Take your sewn hat and align it onto the top of your bird's head. Make sure it's nice and even and level for the best look.
- b. Ladder stitch the hat to the bird's head where the pieces touch.

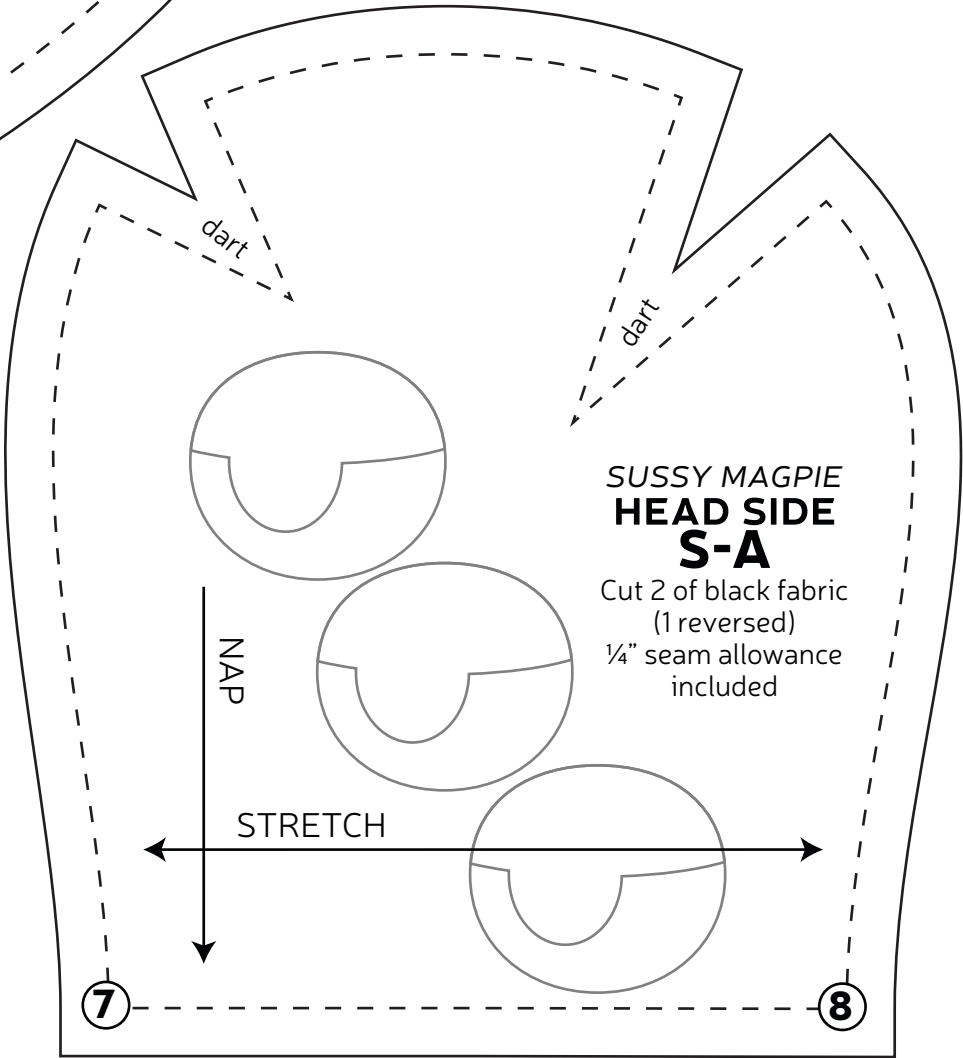
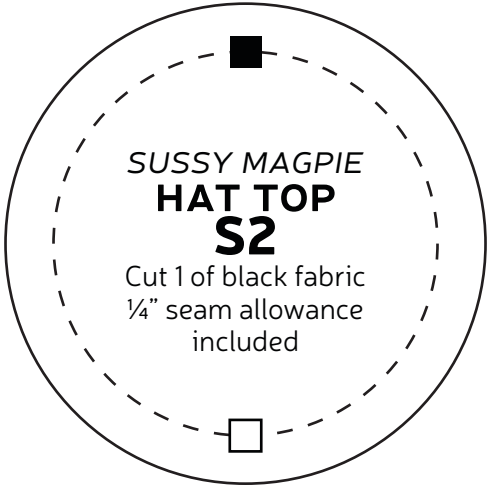
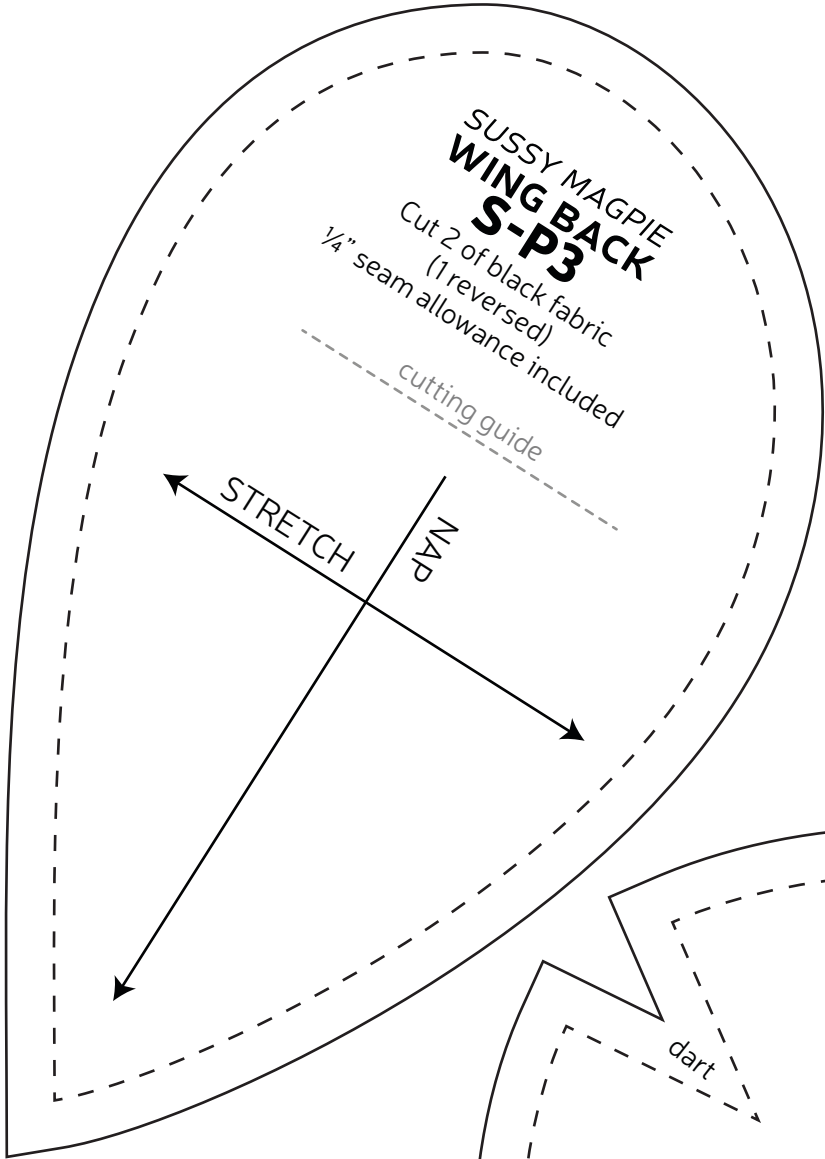


CONGRATS!

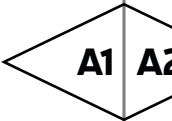
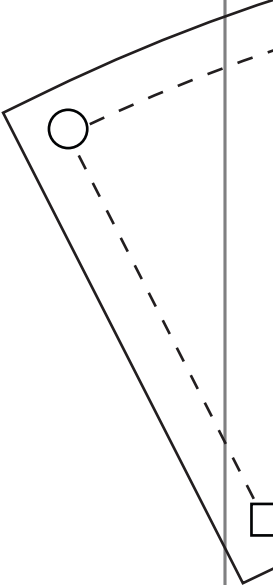
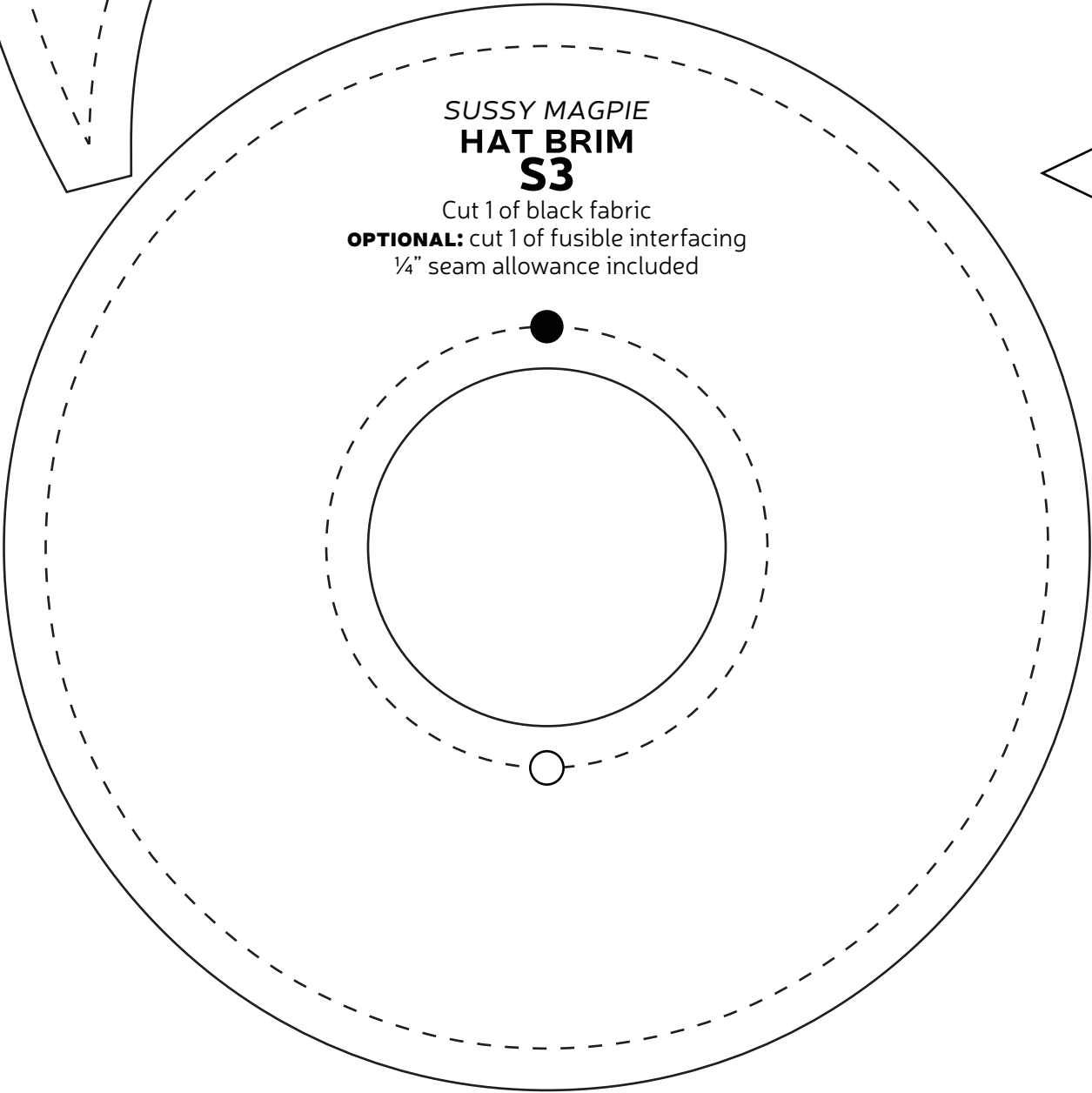
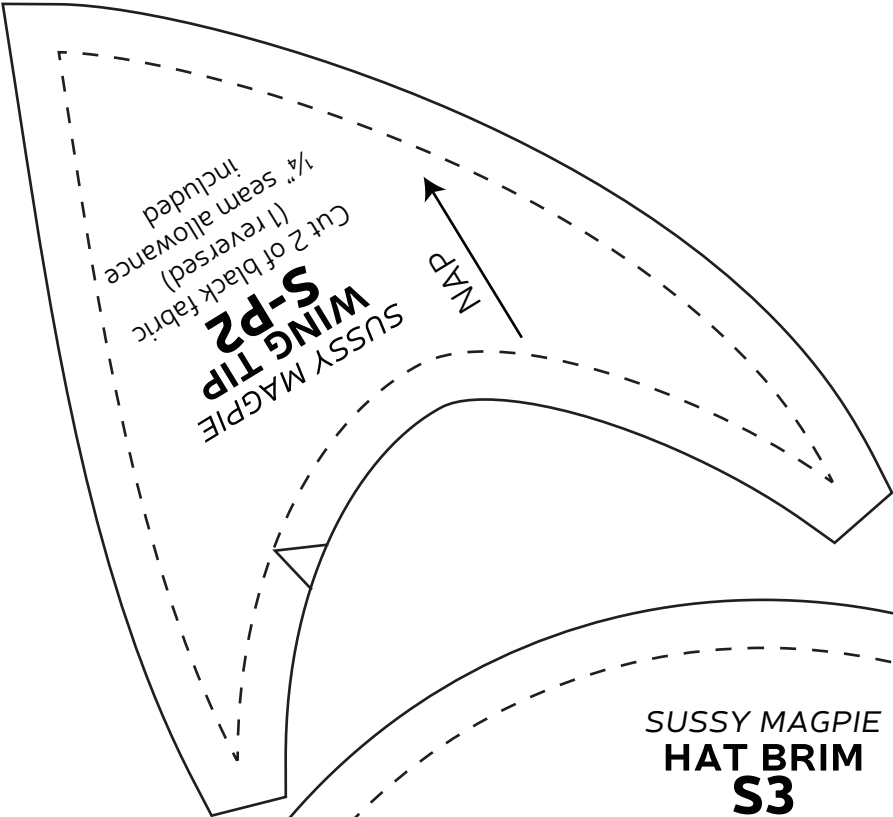
This completes your plush! Now give it a big hug! (If he'll let you.)

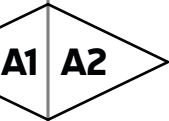
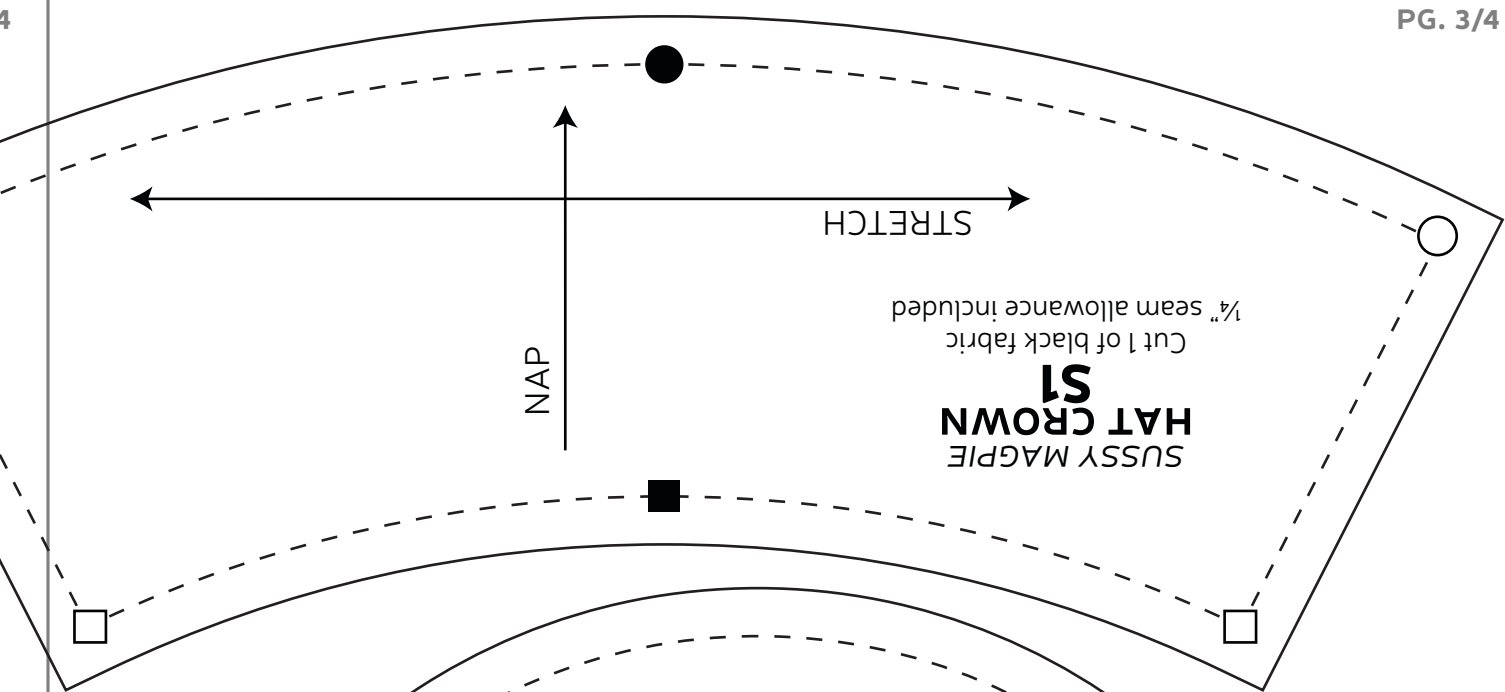
Sew desu ne?

| WWW.CHOLYKNIGHT.COM |



TEST SQUARE
2"
measure this square to
be sure you've printed
at the proper
proportions



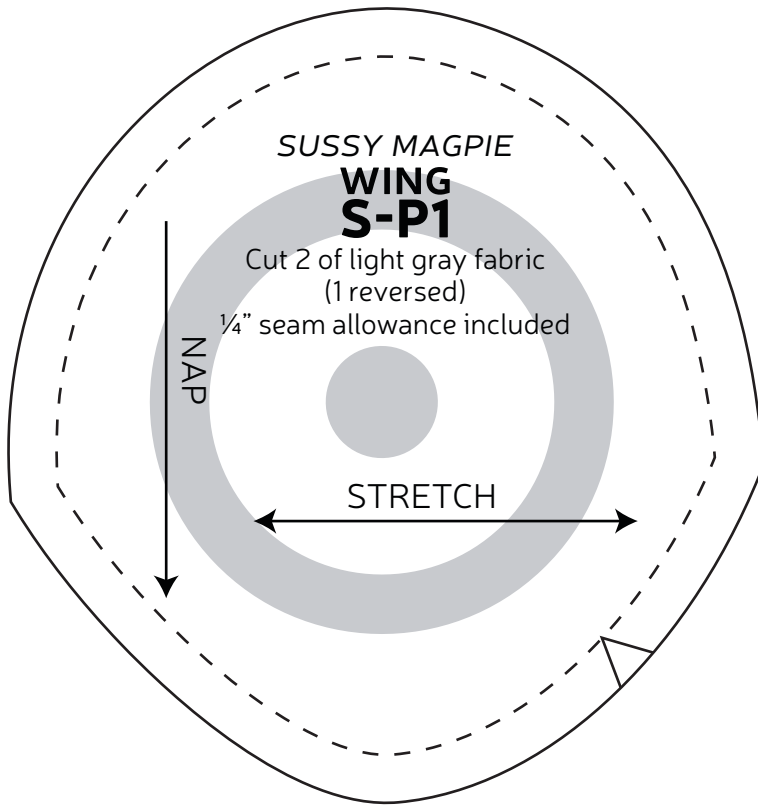


SUSSY MAGPIE
HAT BOTTOM
S4

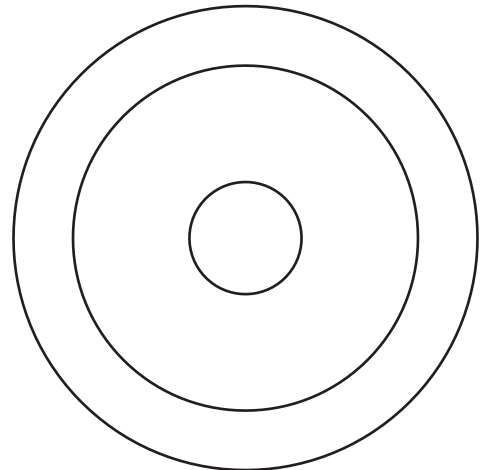
Cut 1 of black fabric
1/4" seam allowance included

cutting guide

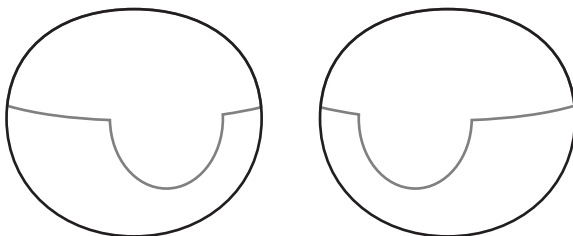




WING CIRCLE MARKINGS
applique
 trace/cut 2 each of black



EYES
applique
 trace/cut 3 each of yellow



PUPILS & EYELIDS
applique
 trace/cut 3 each of black

