

PONYTA

plush



a free sewing pattern by



ponyta plush

These instructions will go over how to make a belly down version of the adorable fire Pokémon, Ponyta! It features a floppy body with long arms and legs, sweet face, and fiery details for the mane, tail, body, and legs.

DIFFICULTY:



The hardest part of the plush is likely getting the body and belly lined up precisely. If you take it one section at a time lining up the numbered points the process will be easier. Adding all the tiny hoof and flame details does take some extra time as well.

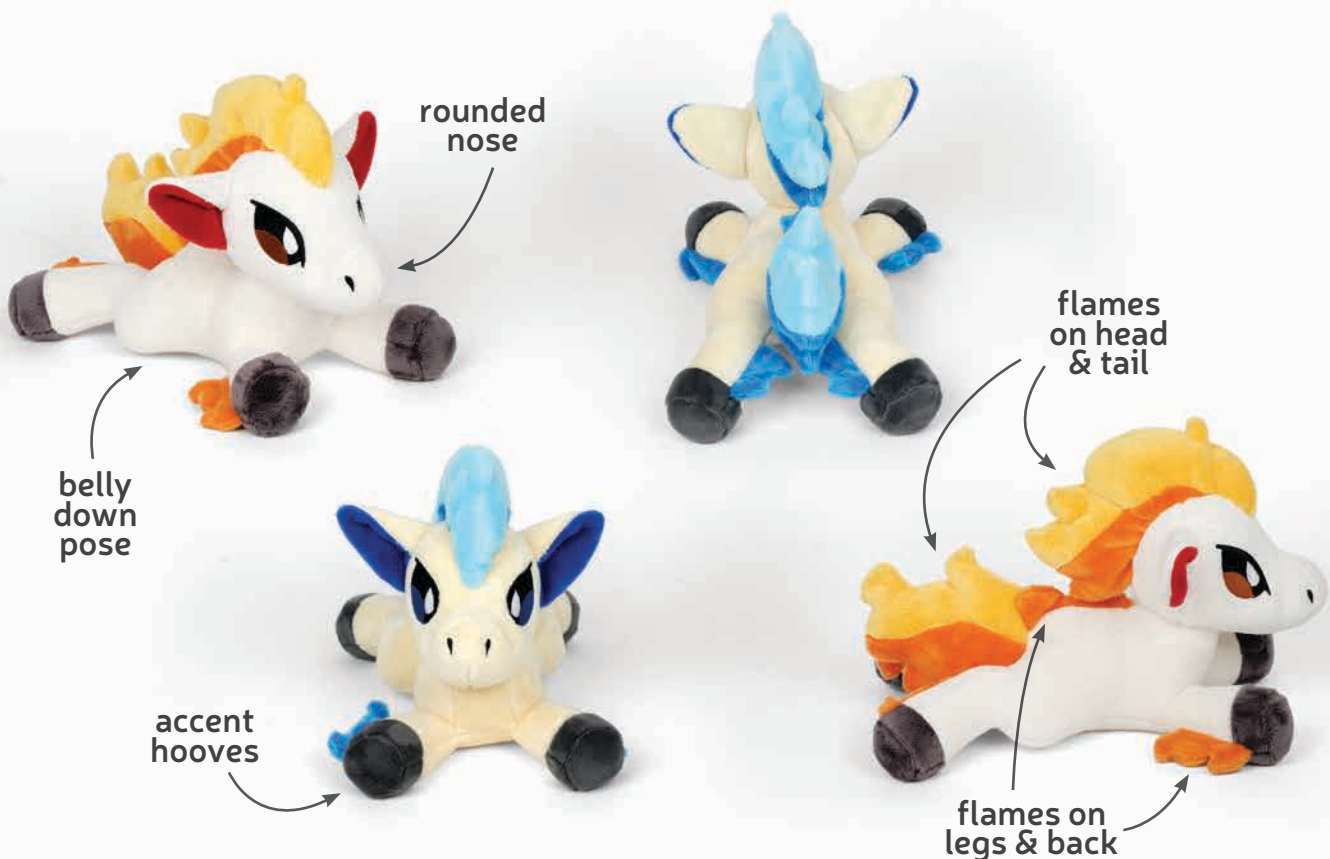
SKILLS USED:

- Fusible web applique
- Curved sewing
- Ladder stitch
- Sewing small pieces
- Matching notches and points
- Basting
- Darts
- Gathering; gathering stitch

MAKES:

ONE PLUSH:

About 5½" tall from bottom belly to top of head, 8½" long from front of nose to tip of tail, and 6½" wide from each side of leg



sew desu ne?

| WWW.CHOLYKNIGHT.COM |

MATERIALS & TOOLS:

- ⅓ yd. of cream fabric for body
- ¼ yd. of orange fabric for flames
- ¼ yd. of yellow fabric for flame accents
- ⅛ yd. (or 8" x 3") of red fabric for inner ears
- ⅛ yd. of gray fabric for hooves
- 3" x 3" of black applique fabric for eyes and nostrils
- 2" x 2" of brown applique fabric for eye highlights
- 2" x 2" of white applique fabric for eye shines
- 5" x 5" of light or heavy duty fusible web
- sewing thread to match main fabric and applique fabrics
- poly-fil stuffing
- basic sewing tools (sewing machine, scissors, iron, needles, pins, fabric marker, seam ripper)

FUSIBLE WEB:

- Fusible web adhesive is a sheet of adhesive with a paper backing.
Not to be confused with fusible interfacing, which is adhesive attached to a fabric/fiber backing.
- Some common brands are **Pellon** & **HeatnBond**
- In countries outside the US, it may also be known as **bondaweb**
- It comes in **light** and **heavy duty** varieties. Lightweight strength is meant for applique you intend to sew later. Heavy duty versions are for a no-sew bond. If you try to sew them later your machine might have trouble penetrating the glue.



APPLIQUE FABRICS:

- Good applique fabrics include **flannel**, **cotton**, **felt**, **minky**, and **fleece**.
- Flannel and cotton are best for detailed applique with a lot of layers because they're thinner. Meanwhile felt, minky, and fleece are better for simpler applique like body markings.
- **Flannel** is used in the example instructions (page 7).



sew desu ne?

| WWW.CHOLYKNIGHT.COM |

fabric comparison:



SUGGESTED BODY FABRICS:

MINKY OR FLEECE

Medium weight, plush fabrics with about 20%-30% stretch along the crosswise grain work best for this project. The varieties shown to the left are some good options and names to look for. Try to avoid heavyweight versions of fleece that are intended for outdoor apparel or they may cause trouble for the detailed areas.

You can also use non-stretch fabrics (such as felt), but be aware that the curves will be more difficult to sew and the result will look different. The plush will become more elongated and the edges will look sharper.

10" of minky
stretches to 13"
= 30% stretch



MINKY

VS.

FELT



sew desu ne?

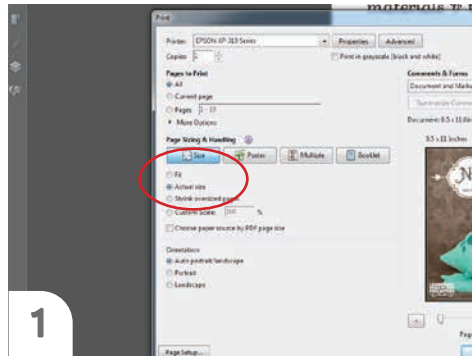
| WWW.CHOLYKNIGHT.COM |

PRINTING THE PATTERN:

Set your computer to print **PAGES 27-31.**

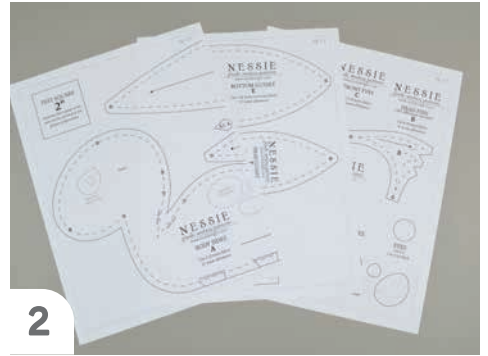
If you're unfamiliar with printing and assembling a .pdf pattern, read the steps to follow.

For the best results, use a .pdf reader like **ADOBE READER**. That's what is shown here and will give you the most control over the settings.



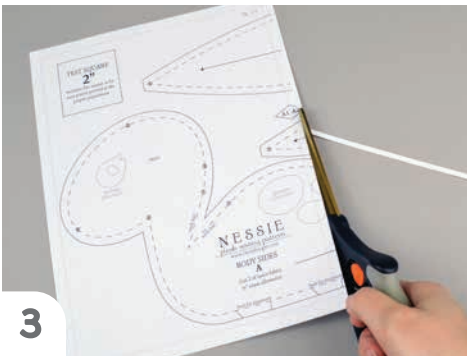
1

At the print dialog box, check the box that says print at "Actual Size" or 100%. Any other selection (such as "Fit to page") will distort the pattern so it's slightly larger or smaller and we don't want that.



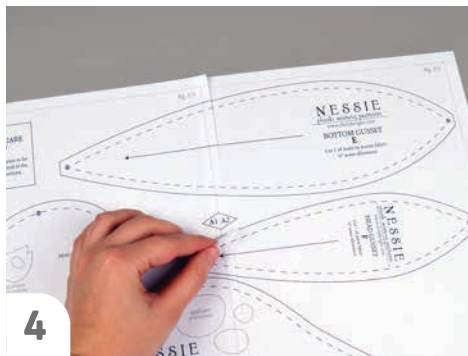
2

Print the pages needed for the file. You might have one or more. Either way, be sure you have the full collection by noting the page numbers in the corner.



3

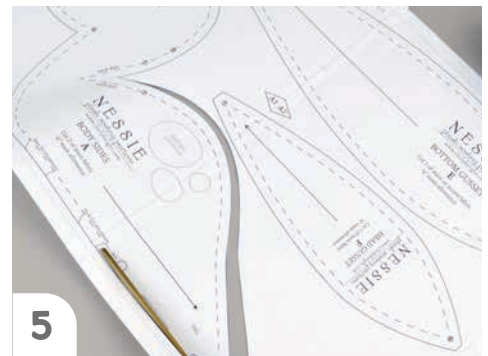
It's likely your printer will have a margin that ensures your image doesn't print to the very edge. Assembly will be easier if you trim off this blank margin edge. This will give you pages that overlap slightly during assembly. If you trim across the gray outline boxes, this will give you pages that don't overlap but rather butt against each other.



4

To line up the pattern pages, match up the corresponding diamond shapes. Each diamond will have a letter, so it's simply a matter of matching A1 to A2, B3 to B4 and so on. The faint gray lines indicate the border of every page, you should be able to line those up as well. When the diamond goes together, tape it in place.

If you have many pages, it's easier to tape up the pages into rows first. Then tape the rows together into a full block.



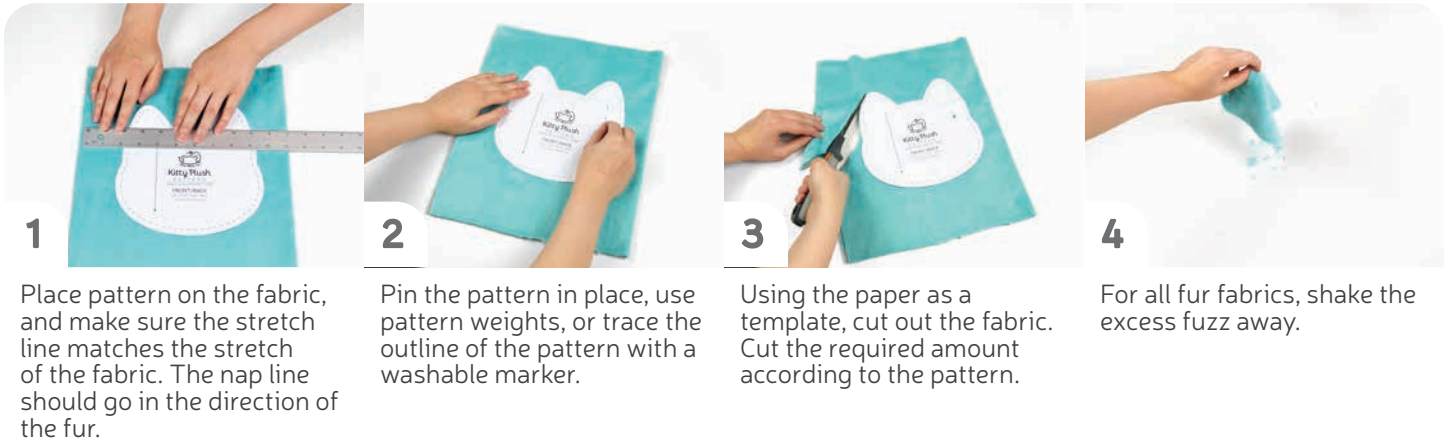
5

You can trace the patterns onto a different paper, or you can also just cut them straight from the printer paper -- be sure that each piece is fully taped together along the joins so they don't fall apart when you cut them.

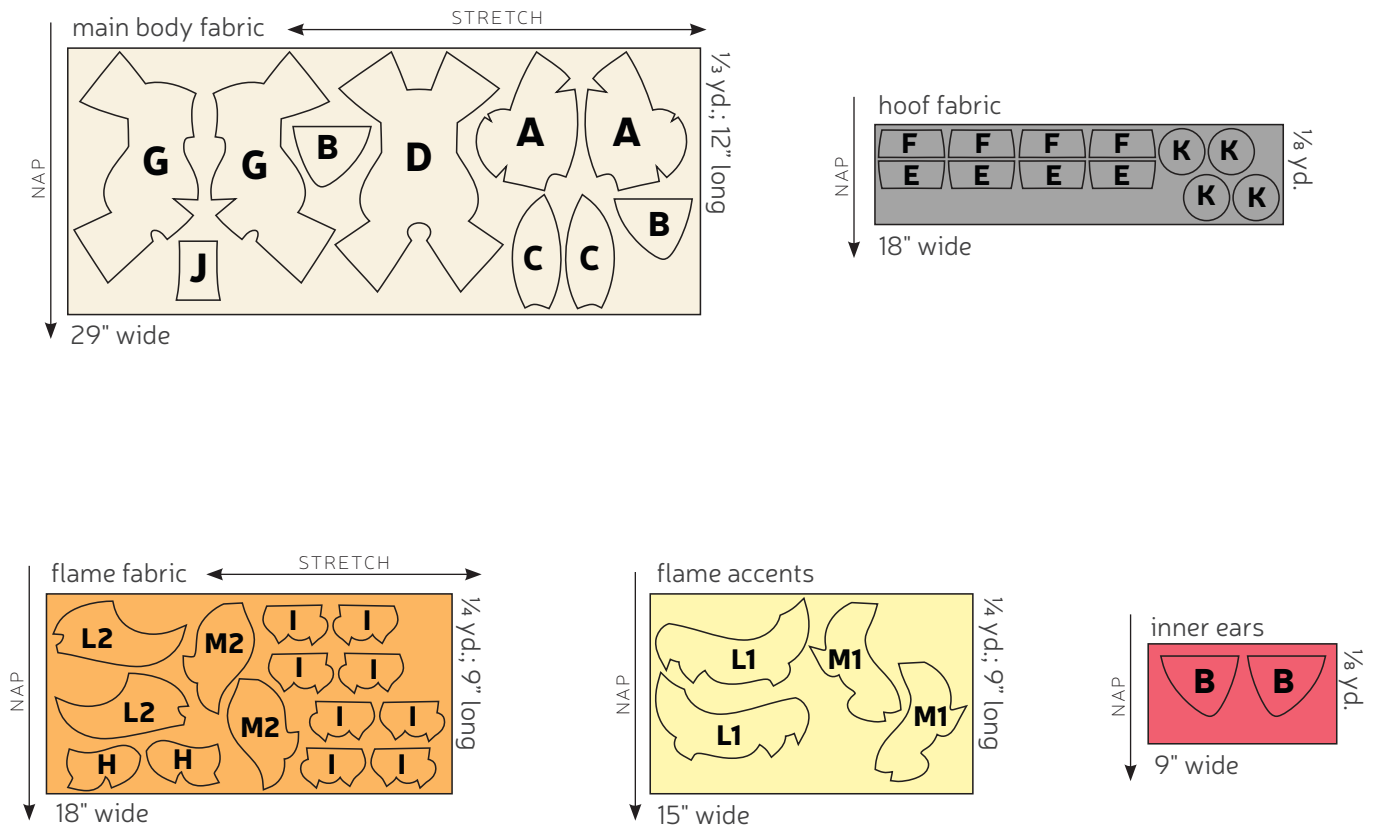
sew desu ne?

| WWW.CHOLYKNIGHT.COM |

CUTTING THE FABRIC:



CUTTING LAYOUT:



sew desu ne?

| WWW.CHOLYKNIGHT.COM |

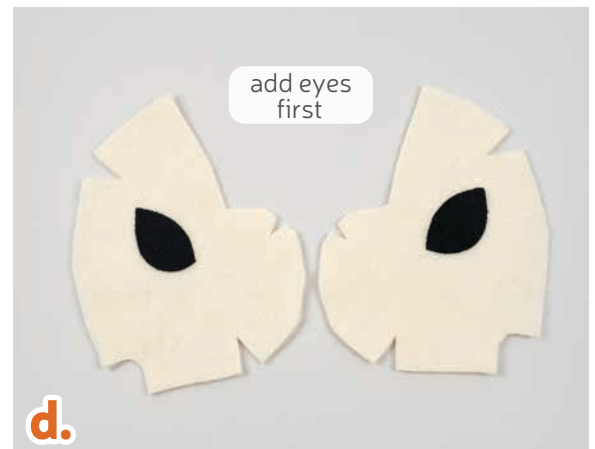
BEFORE YOU BEGIN:

- Briefly read the project instructions so you know what to expect.
- If desired, mark the cut fabric pieces with the markings and symbols from the pattern. Or wait until the applicable step before transferring.
- Note that a ¼" seam allowance is used for the project unless otherwise mentioned. The seam allowance is included in the pattern templates.

1. FUSE THE EYE APPLIQUE

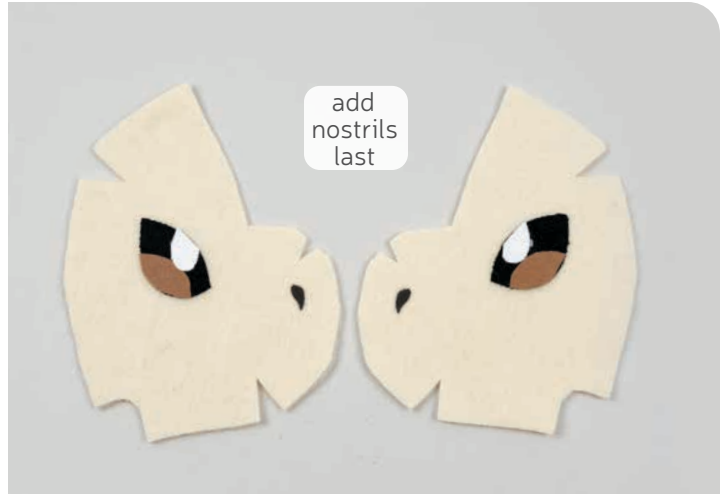
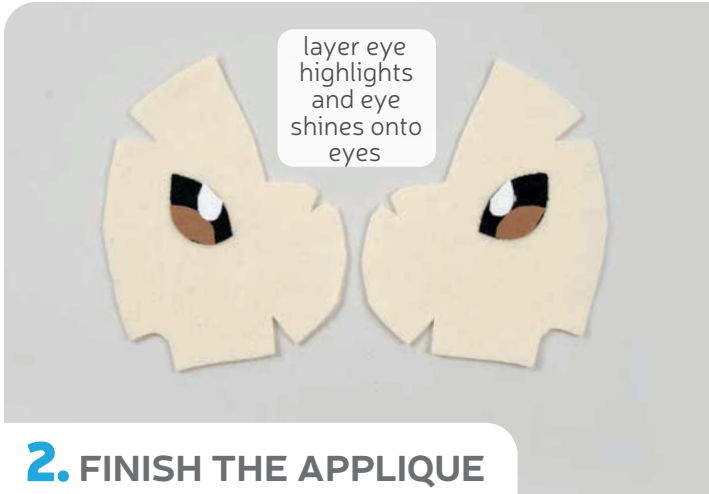


- Grab your fusible web and applique templates. Trace the pieces for the eyes. You should have:
 - **eyes** (2, black)
 - **eye highlights** (2, brown)
 - **eye shines** (2, white)
 - **nostrils** (2, black)
- Fuse the bumpy (adhesive) side of the fusible web onto the applique fabrics.
- Cut out your applique pieces and grab your **HEAD FRONT** piece (A). Grab the **eye** applique piece. Set your paper pattern on top of the head front piece. Align the applique piece on top where the placement markings are. Next, carefully pull the paper pattern away while holding the applique piece in place.
- Fuse the applique pieces with your iron. Use a press cloth, such as a scrap piece of cotton. This will help protect any polyester or fuzzy fabrics from melting or scorching.



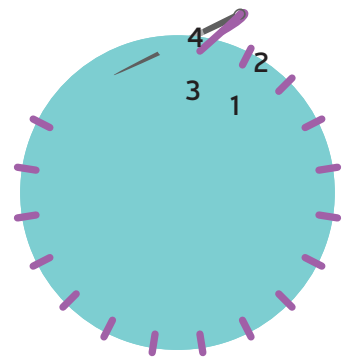
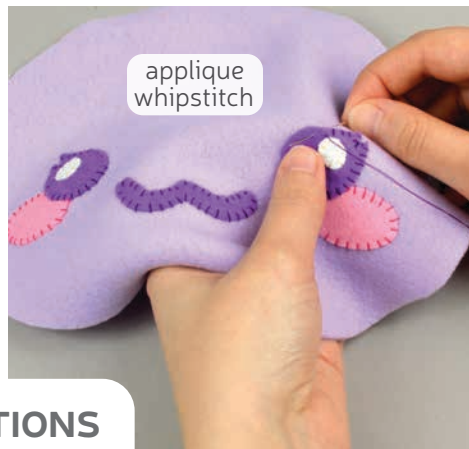
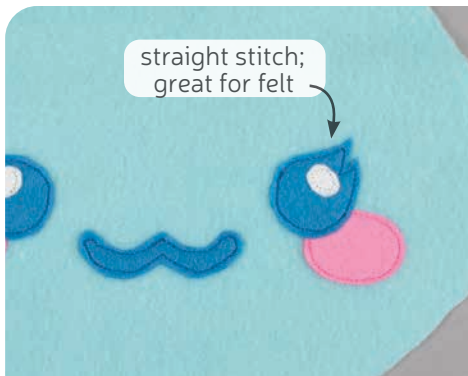
sew desu ne?

| WWW.CHOLYKNIGHT.COM |



2. FINISH THE APPLIQUE

- a. After adding the **eye** layer, add the **eye highlight** layer next. Then add the **eye shine** pieces. Fuse these in place using the photo and paper pattern as a guide.
- b. Lastly add the smallest pieces, the **nostrils**. Fuse these in place as well.
- This should complete the applique. If you used heavy duty fusible web, you can keep the pieces fused without sewing. If you used lighter fusible web, you'll want to stitch the pieces in place. A zigzag stitch with matching thread works nicely around the edges. For hand sewing options, see below.



3. OTHER APPLIQUE OPTIONS

- a. Other good options for applique include a straight stitch, which involves sewing around the edge of the applique pieces with a straight stitch using matching thread -- about 1/8" in from the edge.
- b. You can also applique by hand; I prefer a whipstitch. Thread a hand-sewing needle with some matching thread and knot it. Bring the thread up from the back of the project; about 1/8" in from the edge of the applique shape. Bring it down perpendicular from the curve, just outside of the applique shape. This completes one stitch.
- c. For the next stitch, bring the needle back up about 1/8" away from the previous stitch and 1/8" in from the edge just as in the first stitch. Once again, bring it down just outside the applique shape. Continue this way until you've sewn around the shape.

sew desu ne?

| WWW.CHOLYKNIGHT.COM |



4. SEW THE HEAD DARTS

- Grab your **HEAD FRONT** pieces (A). These pieces have several **darts** all along the nose and forehead marked on the paper pattern. To sew the **dart**, start by folding the fabric along the point of the **dart** so the short slanted edges match up. Here we're starting with the forehead **dart**. Make sure right sides are facing and pin the fabrics together.
- Sew the **dart** starting at the opening and work your way toward the fold of the fabric.
- Repeat this with the remaining two **darts**, found above and below the nostril. Then repeat this all over again with your other head front piece for six sewn **darts** total.

DARTS:

A wedge-shaped gap found in a pattern. When sewn in fabric, it creates a tuck in the fabric and develops a 3D shape. The diagonal sides of the wedge are the **LEGS**; these are matched up and sewn to the **POINT** of the dart.

5. SEW THE CENTER HEAD SEAM

- Grab your two **HEAD FRONT** pieces (A) and align them together with right sides facing and the raw edges matching up. Pin the pieces together along the center front edge. This is the edge that goes around the nose, but it's also labeled from **point 1 to 2** if you're keeping track.
- Sew the head front pieces together from **point 1 to 2**.

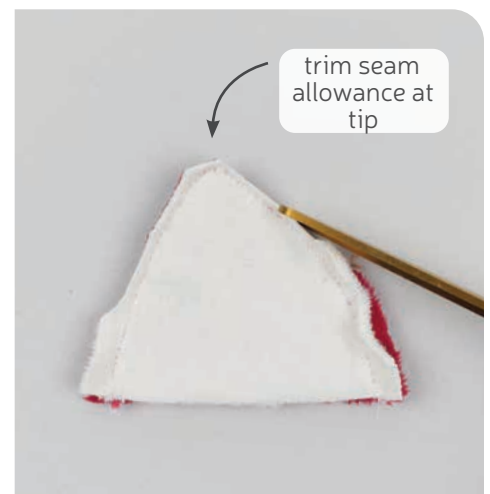
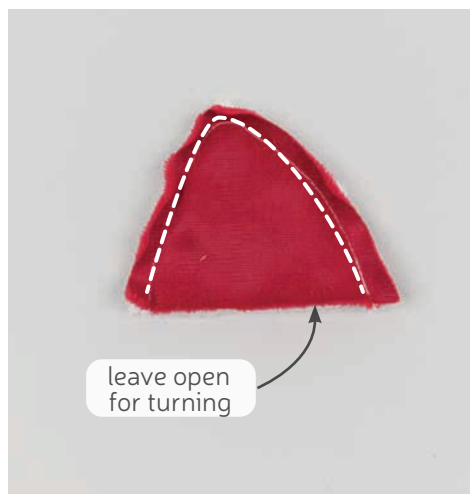
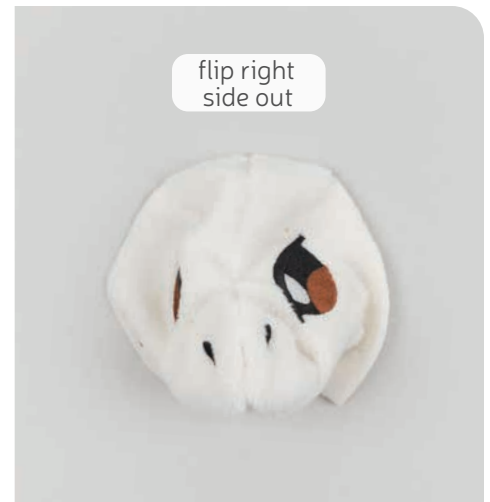


sew desu ne?

| WWW.CHOLYKNIGHT.COM |

6. TRIM & OPEN THE HEAD FRONT

- a. Trim the excess seam allowance at the inner corner of the nose. This will help increase flexibility in that area so the nose turns more cleanly.
- b. Turn the head front right side out so the nose pops out.



7. SEW THE EARS

- a. Grab your **EAR** pieces (B). Take one from your inner ear fabric and one from your main fabric. Align them with right sides facing and the raw edges matching up.
- b. Sew the pieces together along the long curved edge. Leave the straight edge free for turning the piece right side out later.
- c. Trim the excess seam allowance at the top tip of the ear to reduce bulk in that area. This will help the corner look nice and pointy after it's turned. Repeat this step with your other ear pieces so you have two total.

sew desu ne?

| WWW.CHOLYKNIGHT.COM |



8. FOLD THE EARS

- Turn the **EAR** (B) right side out through the opening you left. Define the upper point with a chopstick or similar turning tool.
- Take your ear and fold it so the inner ear fabrics are facing each other. Use the **fold line** found printed on the paper pattern as a guide. The open edges along the bottom should line up.
- Baste along the bottom edge of the ear to hold the fold in place. Repeat this with your other ear so you have a mirrored pair.



9. BASTE THE EARS

- Grab your **HEAD FRONT** so far (A). If you haven't already, note the **ear placement lines** found on the paper pattern for the head front. Align the open edge of the ear within these **placement lines**. The inner ear fabric should be facing up and the folds should be pointing toward the center.
- Now grab your ears and flip them so the inner ear fabric is now facing down against the head. The raw edges of the ear and head should be flush within the **placement lines**. Pin the ears to the head. Baste the ears to the head within the seam allowance to hold them in place for future steps.

BASTING:

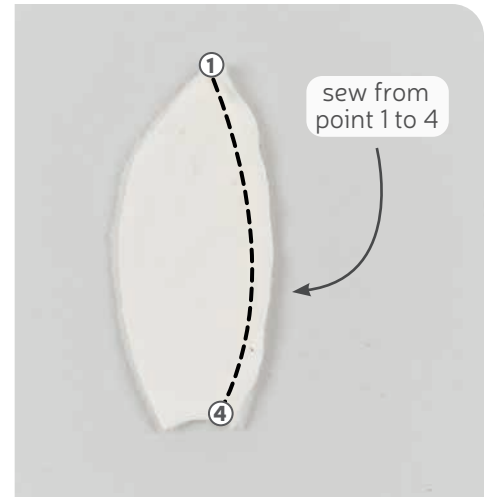
A form of temporary sewing meant to hold pieces in place. A long stitch length is often used for this reason. The finished result is not meant to be seen and sometimes is even removed later (depending on your project).

sew desu ne?

| WWW.CHOLYKNIGHT.COM |

10. SEW THE HEAD BACK

- Grab your **HEAD BACK** pieces (C). Align them with right sides facing and the raw edges matching up. Pin the pieces together along the center back edge. This is also the edge going from **point 1** to **4**.
- Sew the head back pieces together from **point 1** to **4**.



11. ATTACH THE HEAD BACK

- Grab your **HEAD BACK** pieces (C) as well as your **HEAD FRONT** (A) from before. Align the head back with the head front so right sides are facing and the raw edges match up. **Point 1** should align at the center top and **point 3** will align at the bottom corners at the neck. Make sure the ears are tucked inside, then pin the head back to the front.
- Sew the head back to the front going around from **point 3**, through **point 1**, then to the other **point 3**. This should leave the neck open at the bottom.
- Turn the head right side out when complete.

sew desu ne?

| WWW.CHOLYKNIGHT.COM |



12. ATTACH THE BACK HOOVES

- Grab your **BODY BACK** pieces (G). Also grab your **FRONT** and **BACK HOOVES** (E & F). We're going to attach the front hooves to the arms of the body and the back hooves to the legs. But you can also look for the **notch markings** for help with alignment. The front hooves will join at the **single notches** and the back hooves will join at the **double notches**.
- Flip your hooves over so now they're right sides facing with the body and the **notches** match up. Make sure right sides are facing and pin the fabrics together.
- Sew the hooves to the body along the **notched edges**. Repeat this with your remaining body back piece and one more of your front and back hoof pieces. This should leave four left for the belly, coming up next.



13. ATTACH THE BELLY HOOVES

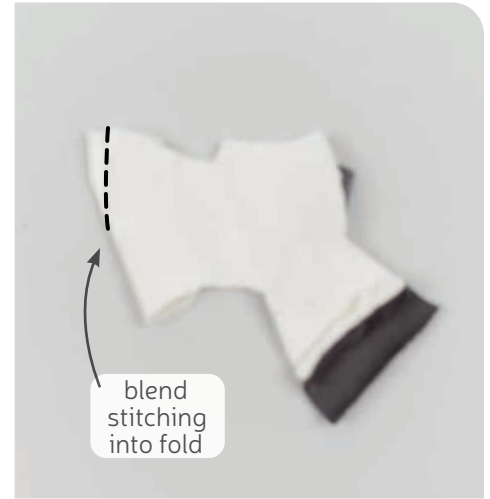
- Repeat step 12 with your **BELLY** piece (D). Take your front hooves and align them at the arms with the **single notches**. Take your back hooves and align them at the legs with the **double notches**.
- Flip the hooves over so now they're right sides facing with the belly. Line up the **notched edges** and pin the fabrics together.
- Sew the hooves to the belly along the **notched edges**.

sew desu ne?

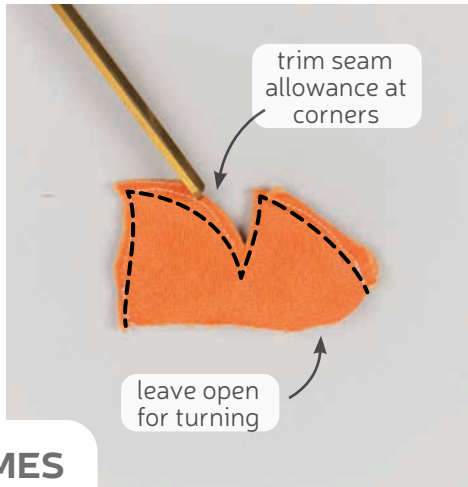
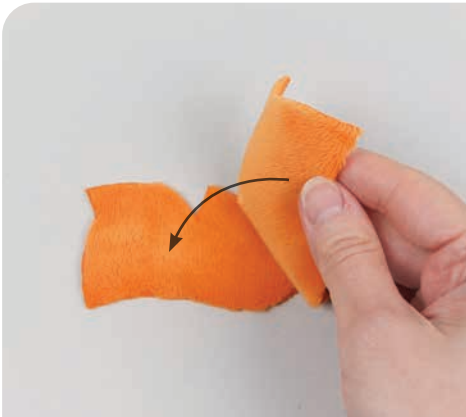
| WWW.CHOLYKNIGHT.COM |

14. SEW THE BODY DART

- a.** Grab your **BODY BACK** pieces from before (G). These pieces also have **darts** just like the head front from before. You can find it labeled on the paper pattern. Sew it the same way starting by folding the fabric along the point of the **dart**. Match up the slanted edges, make sure right sides are facing, and pin the fabrics together.



- b.** Sew from the opening of the **dart** into the fold of the fabric. Try to blend your stitching into the fold so you have a smooth transition and a rounder finish to the plush. Repeat this with your other body back piece so you have two total.

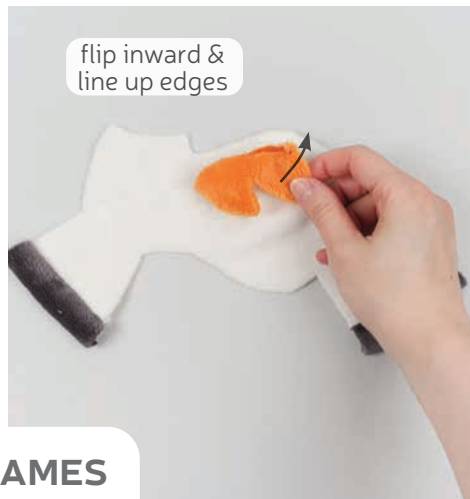


15. SEW THE BODY FLAMES

- a.** Grab your **BODY FLAME** pieces (H). Align them with right sides facing and the raw edges matching up. Pin the fabrics together.
- b.** Sew the pieces together along the pointed edge. Leave the slightly curved edge free for turning the piece right side out later. Trim the excess seam allowance around the outer and inner corners. This will allow the piece to turn more cleanly.
- c.** Turn the flames right side out and define the corners with a chopstick or similar turning tool.

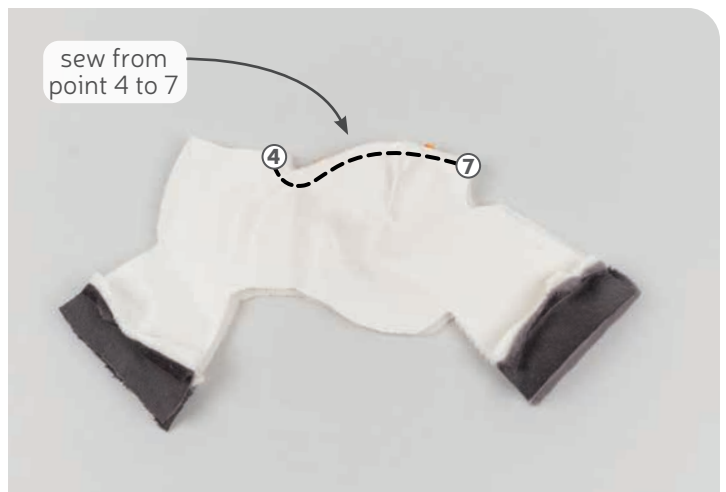
sew desu ne?

| WWW.CHOLYKNIGHT.COM |



16. BASTE THE BODY FLAMES

- Grab one of your **BODY BACK** pieces (G). If you haven't already, note the **flame placement lines** found on the paper pattern for the body back. Align the flames within the **placement lines**.
- Now grab the flames and flip them inward so now they're pointing toward the middle of the body. The raw edges of the flames and body back should be flush. Align the raw edges and pin the flames to the body.
- Baste the flames to the body within the seam allowance to hold them in place for future steps.



17. SEW THE CENTER BACK

- Grab your remaining **BODY BACK** piece (G). Align it with the first piece so the center back edge matches up. This is the edge with the flame attached, but it also goes from **point 4 to 7** if you're keeping track. Make sure right sides are facing and the flame is secured between the layers. Pin the fabrics together along this edge.
- Sew the center back edge of the body back pieces going from **point 4 to 7**.

sew desu ne?

| WWW.CHOLYKNIGHT.COM |

18. SEW THE LEG FLAMES



- Grab your **LEG FLAME** pieces (I). Take two of them and align them with right sides facing and the raw edges matching up.
- Sew the pieces together along the curved edges. Leave the straight edge free for turning the piece right side out.
- Trim the excess seam allowance around the tight corners and curves of the flames. This will reduce bulk and increase flexibility in those areas, and then the piece will turn more cleanly.
- Turn the flames right side out through the opening in the bottom. Define the points with a chopstick or similar turning tool.



19. BASTE THE FLAMES

- Grab your **BODY BACK** pieces so far (G). If you haven't already, note the **flame placement lines** found on the paper pattern for the body back. Align the open edge of the flames within these lines.
- Now take the flames and flip them so they're pointing inward. This should make the raw edges match up. Baste the flames to the edge of the body to hold them in place for future steps.

sew desu ne?

| WWW.CHOLYKNIGHT.COM |

20. ATTACH THE CHEST TO THE BODY BACK



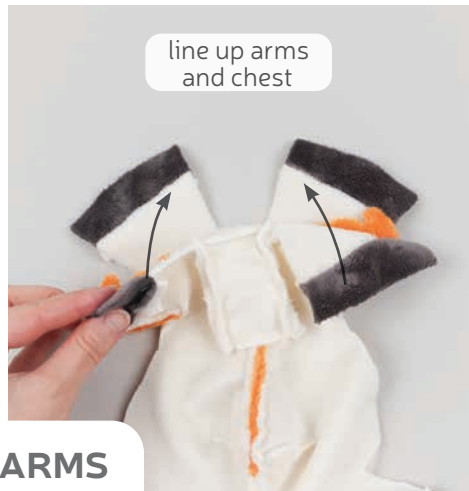
- a. Keep your **BODY BACK** piece (G) and now also grab your **CHEST** piece (J). The chest will join to the straight edge above the arm. But you can also look for the **numbered points** for help with alignment. Look for **points 5 and 6**.
- b. Take your chest and flip it so now it's right sides facing with the body back. Line up **points 5 and 6**. Make sure right sides are facing and pin the fabrics together.
- c. Sew the chest to the body from **point 5 to 6**.

- d. Grab your other body back piece and align it to the other side of the chest piece. Once again match up **points 5 and 6**. Make sure right sides are facing and pin the fabrics together.
- e. Sew the other body back piece to the chest from **point 5 to 6**.



sew desu ne?

| WWW.CHOLYKNIGHT.COM |



21. SEW BETWEEN THE ARMS

- Now you can finally attach the body back to the belly. In the next steps we'll be sewing between all the legs along the front, sides, and back, leaving the hooves open. Expert sewers can do this all in one go, but the next few steps will break it down into sections.
- Start by lining up the body back with the belly along the front edge between the arms. Line up the arms at the hooves, then line up the **CHEST** (J) with the **BELLY** (D) at **points 5 and 8**.
- Sew the front area by starting at the hoof and going down the arm. Pivot at **point 5**, go through **point 8**, and stop at the other **point 5**. Pivot and go down the other arm to finish.

22. SEW THE SIDES

- Grab the side of your **BODY BACK** piece and align it with the **BELLY**. This should start at the top corner of the arm hoof, go down the side, and end at the corner of the leg hoof. Make sure the **FLAME** at the arm is sandwiched between the fabrics and that right sides are facing. Pin the fabrics together.
- Sew from the top hoof, down the side, and down to the bottom hoof. Repeat this on the other side.

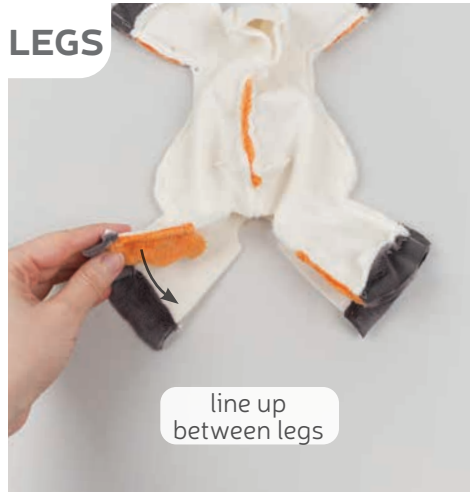


sew desu ne?

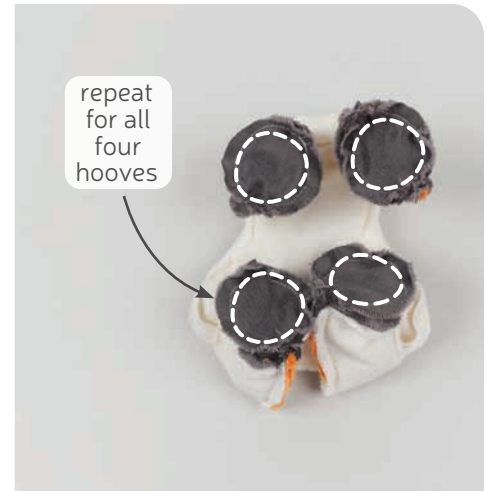
| WWW.CHOLYKNIGHT.COM |

23. SEW BETWEEN THE LEGS

- a. Next is to line up the area between the back legs. Start by lining up the legs at the corners with the hooves. Make sure the **LEG FLAMES** are tucked inside. Then line up the area between the legs. **Point 7** should match up at the center. Make sure right sides are facing and pin the fabrics together.



- b. Sew between the back legs by starting at the corner with the hoof and going down the leg. Go around the edge between the legs sewing through **point 7**. Then go down the other leg to complete. This should leave just the hooves open at the ends.



24. ATTACH THE HOOF BOTTOMS

- a. Grab your **HOOF BOTTOM** pieces (K). These pieces will join to the open ends of the arms and legs. Open up the raw edge of one of your arms and align the raw edges of the foot around the hoof bottom. Make sure right sides are facing and pin the fabrics together.
- b. Sew the hooves to the hoof bottom piece all the way around.
- c. Repeat this three more times so you have all four hoof bottoms attached.

sew desu ne?

| WWW.CHOLYKNIGHT.COM |

25. TURN THE BODY

- a. Before turning the body right side out, make sure to clip the seam allowances at any tight inner curves. This is especially helpful where the arms and legs meet the body. You can also clip the seam allowance at the back of the neck where there is an inner curve.
- b. Turn the body right side out through the opening in the neck. Define all the arms and legs with a chopstick or similar turning tool.



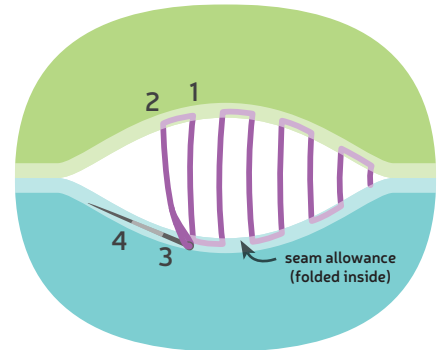
26. STUFF THE HEAD AND BODY

- a. Grab your head from before and now you can start stuffing it. Be sure to get plenty in the nose so it fills out and there are no wrinkles near the seams and darts. Continue filling up the head until it looks full and round.
- b. Next begin stuffing the body. Start by getting plenty of stuffing in the legs. Make sure there's enough that the hooves look full and there are no wrinkles in the fabric. That way the hooves won't deflate over time with use.
- c. Continue filling up the rest of the body, working your way up to the neck.

sew desu ne?

| WWW.CHOLYKNIGHT.COM |

27. ATTACH THE HEAD



- a.** Grab your stuffed head and align it over the stuffed body. You should be able to line up the **numbered points** to ensure it's centered. Line up **point 2** at the center front with the **CHEST** (J) and **point 4** at the center back.
- b.** From here, prepare to ladder stitch the head in place. Thread a hand-sewing needle and knot it at the end. Insert the needle into the center back of the head at **point 4**. Take a stitch here, then go across and take another at **point 4** on the body. Continue attaching the head like this, but use long basting stitches just to be sure the placement is right. Stop when you're about 1-2" from where you started.

- c.** Check that you like the placement of the head and it isn't tilted or twisted. It may also need some extra stuffing. This will also give the neck more stability. Sneak a bit of extra stuffing into the opening you left.

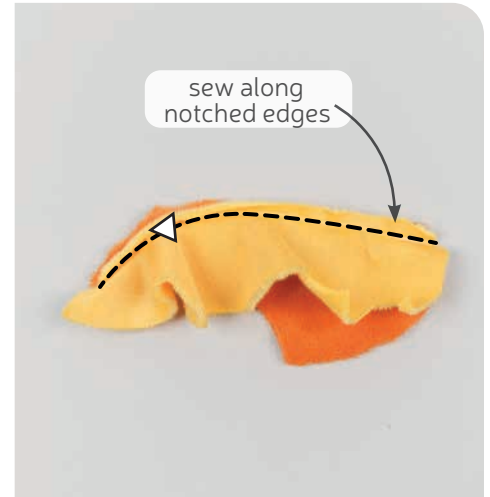
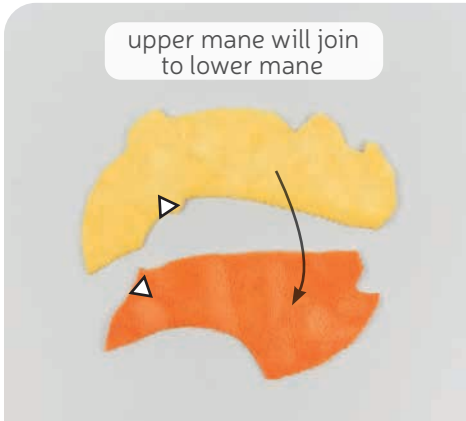


- d.** From here, go around the neck again using tinier, neater ladder stitches to secure the head completely.



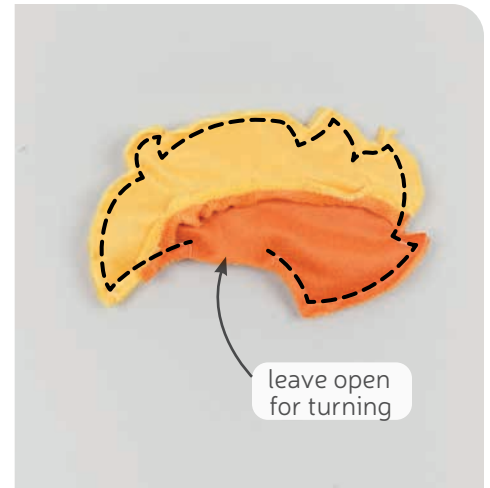
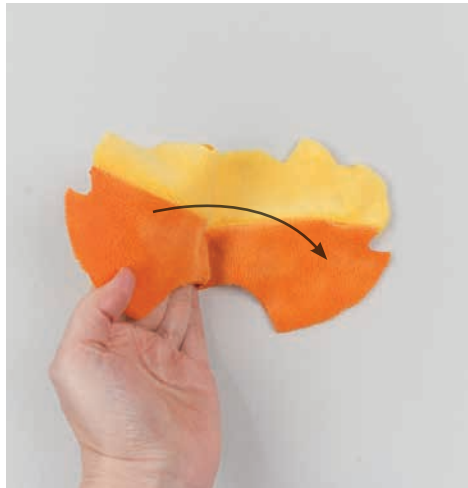
sew desu ne?

| WWW.CHOLYKNIGHT.COM |



28. ATTACH THE UPPER MANE

- Grab your **UPPER MANE** (L1) and **LOWER MANE** (L2) pieces. These pieces will join together along the inner curves as shown to make the entire two-toned mane. But these curves are also marked with a **notch marking** for help with alignment.
- Flip over your upper mane piece so it's right sides facing with the lower mane. Line up the **notched edges**. Bend the upper mane piece to line up the edges and pin the fabrics together.
- Sew the upper mane to the lower mane along this **notched edge**. Repeat this with your other mane pieces for two total.



29. SEW THE MANE

- Open up your **MANE** pieces (L) when complete.
- Take your two mane pieces and align them with right sides facing and the raw edges matching up. Pin the fabrics together.
- If you haven't already, note the **opening for turning markings** found on the paper pattern for the **LOWER MANE** (L2). Transfer these markings over to the wrong side of the fabrics you've just aligned. Sew the mane pieces together all the way around, but leave the **opening for turning** that you marked.

sew desu ne?

| WWW.CHOLYKNIGHT.COM |



30. CLIP, TURN, & STUFF THE MANE

- Trim the excess seam allowance around the tight corners of and curves of the **MANE (L)**. Trimming the outer corners will reduce bulk and trimming the inner corners will increase flexibility in those areas. This will allow the piece to turn more cleanly.
- Turn the mane right side out through the opening you left. Define the points with a chopstick or similar turning tool.
- Stuff the mane lightly with stuffing. Be sure to get small bits in the tips and corners so it doesn't deflate over time.

31. ATTACH THE MANE

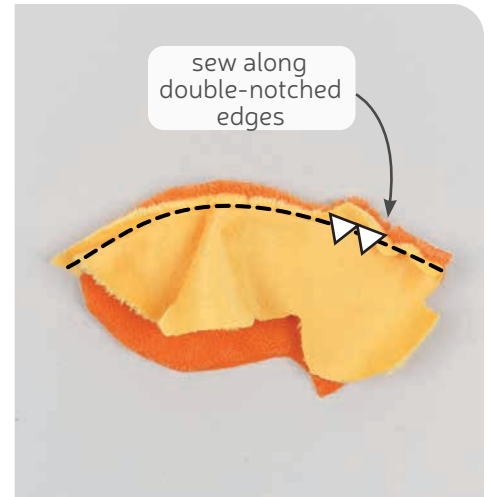
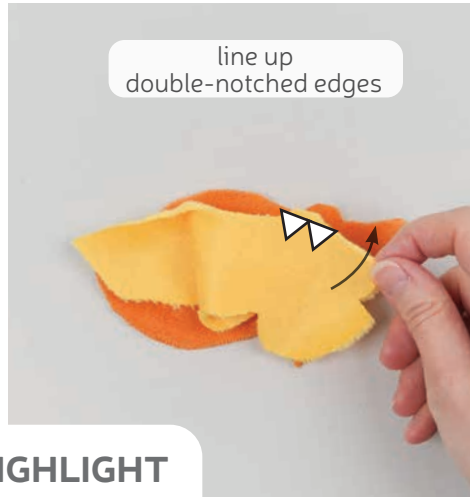
- Take your stuffed **MANE** and align it over the top of your plush's head. Center it over the middle seams along the top so it curves around the head. The tip of the mane in the sample is placed about 2" down the center top of the head. You could also go a little more or less depending on your preference. Squish the mane into the head so it flattens out a bit at the bottom, creating a wider base for attaching.



- Attach the mane to the head using a ladder stitch. Sew about $\frac{1}{2}$ " away from the bottom seam. This should leave about $\frac{1}{2}$ – $\frac{1}{4}$ " between the mane and the ears. But you can go a little more or less depending on your preference. Sew all the way around the mane to secure it.

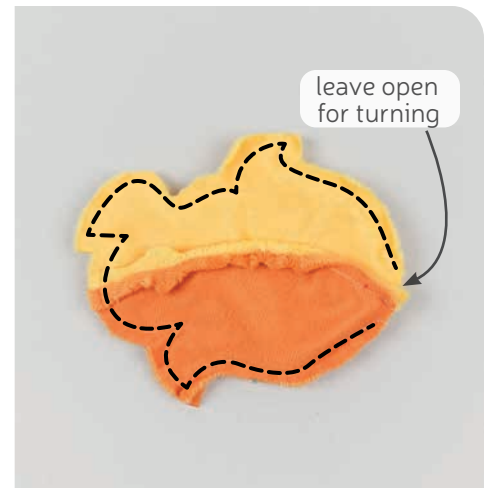
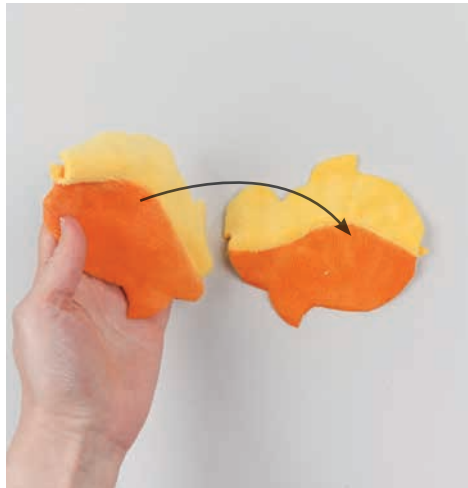
sew desu ne?

| WWW.CHOLYKNIGHT.COM |



32. ATTACH THE TAIL HIGHLIGHT

- Grab your **UPPER TAIL** (M1) and **LOWER TAIL** (M2) pieces. These pieces will join together along the inner curves as shown to make the entire two-toned tail. But these curves are also marked with a **double notch marking** for help with alignment.
- Flip over your upper tail piece so it's right sides facing with the lower tail. Line up the **double notched edges**. Bend the upper tail piece to line up the edges and pin the fabrics together.
- Sew the upper tail to the lower tail along this **double notched edge**. Repeat this with your other tail pieces for two total.



33. SEW THE TAIL

- Open up your **TAIL** pieces (M) when complete.
- Take your two tail pieces and align them with right sides facing and the raw edges matching up. Pin the fabrics together.
- Sew around the curved and pointed edges of the tail. Leave the short straight edge of the tail open for turning. This is also marked on the paper pattern for extra help with finding it.

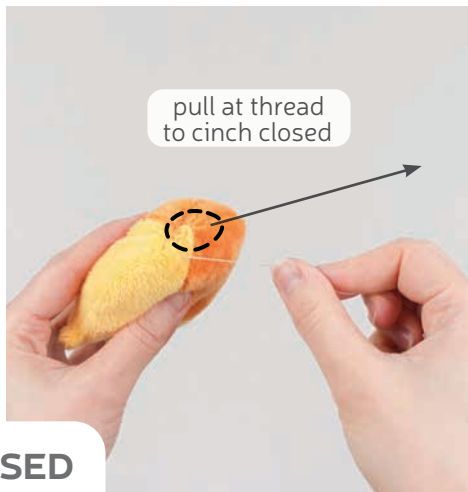
sew desu ne?

| WWW.CHOLYKNIGHT.COM |



34. CLIP, TURN, & STUFF THE TAIL

- Trim the excess seam allowance around the tight corners and curves of the **TAIL** (M). Trimming the outer curves will reduce bulk and trimming the inner curves will increase flexibility in those areas. This will allow the piece to turn more cleanly.
- Turn the tail right side out through the opening you left. Define the points with a chopstick or similar turning tool.
- Stuff the tail lightly with stuffing. Be sure to get small bits in the tips and corners so it doesn't deflate over time.



35. CINCH THE TAIL CLOSED

- Grab a hand sewing needle and thread it. Sew a gathering stitch around the opening of the **TAIL** (M), about $\frac{1}{4}$ " away from the edge.
- Pull at the thread to cinch the tail closed.

GATHERING:

The process of shortening the length of a piece of fabric by sewing long stitches through it. When the thread is pulled, it forms small folds that ruffle the fabric.

GATHERING STITCH:

A long version of the running stitch, which is a stitch done by weaving the needle in and out of a length of fabric going along a line. The long stitches (about $\frac{1}{4}$ "- $\frac{1}{2}$ " long) gather the fabric when pulled later.

sew desu ne?

| WWW.CHOLYKNIGHT.COM |

36. ATTACH THE TAIL

- a. Take the cinched end of your **TAIL** (M) and align it onto the back end of your plush, right over the body dart. Make sure the yellow side is pointing up.
- b. Secure the tail in place by ladder stitching around the base.



CONGRATS!
This completes your
plush! Now go on a
Pokemon adventure!

sew desu ne?

| WWW.CHOLYKNIGHT.COM |

TEST SQUARE 2"

measure this square to
be sure you've printed
at the proper
proportions

FRONT HOOVES (E)

Cut 4 from gray fabric
(2 reversed)
1/4" seam allowance included

NAP

BACK HOOVES (F)

Cut 4 from gray fabric
(2 reversed)
1/4" seam allowance included

NAP

A1 A2

BELLY (D)

Cut 1 from cream fabric
1/4" seam allowance included

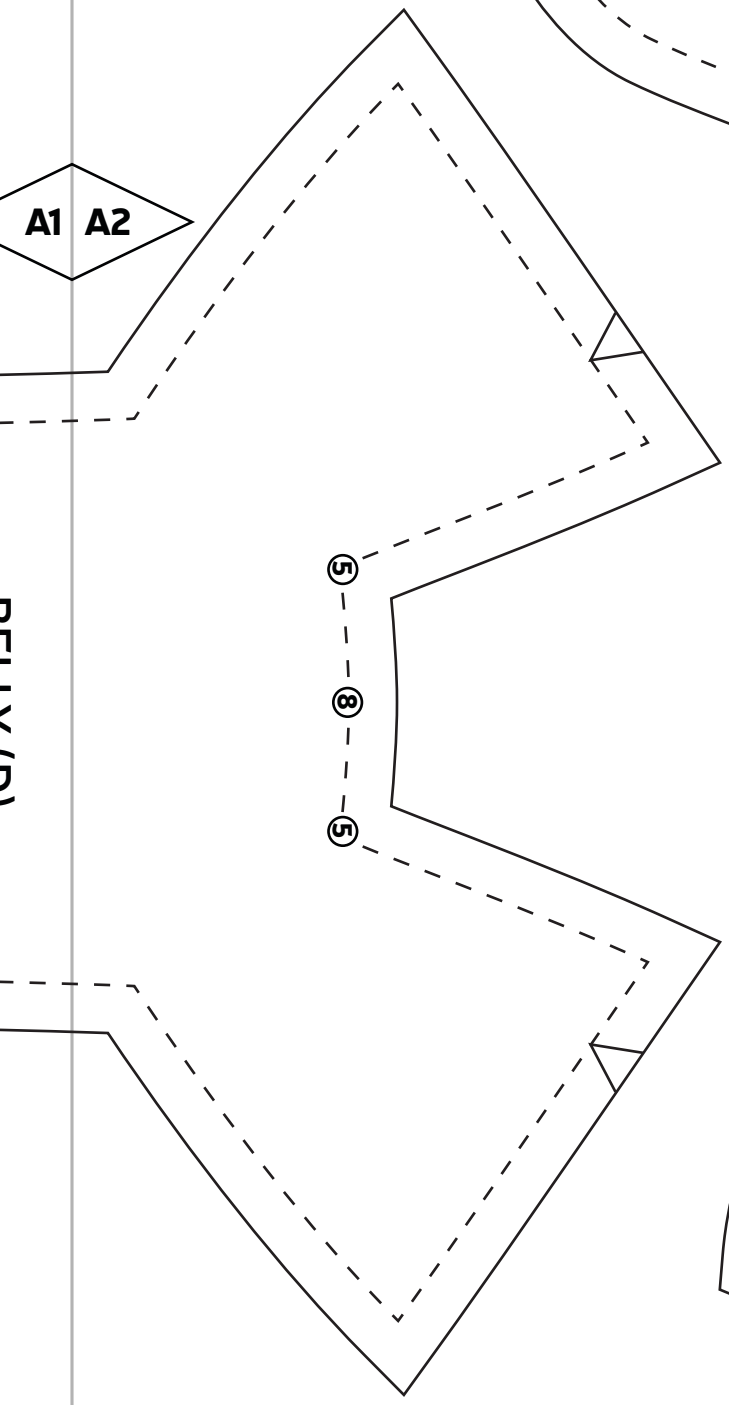
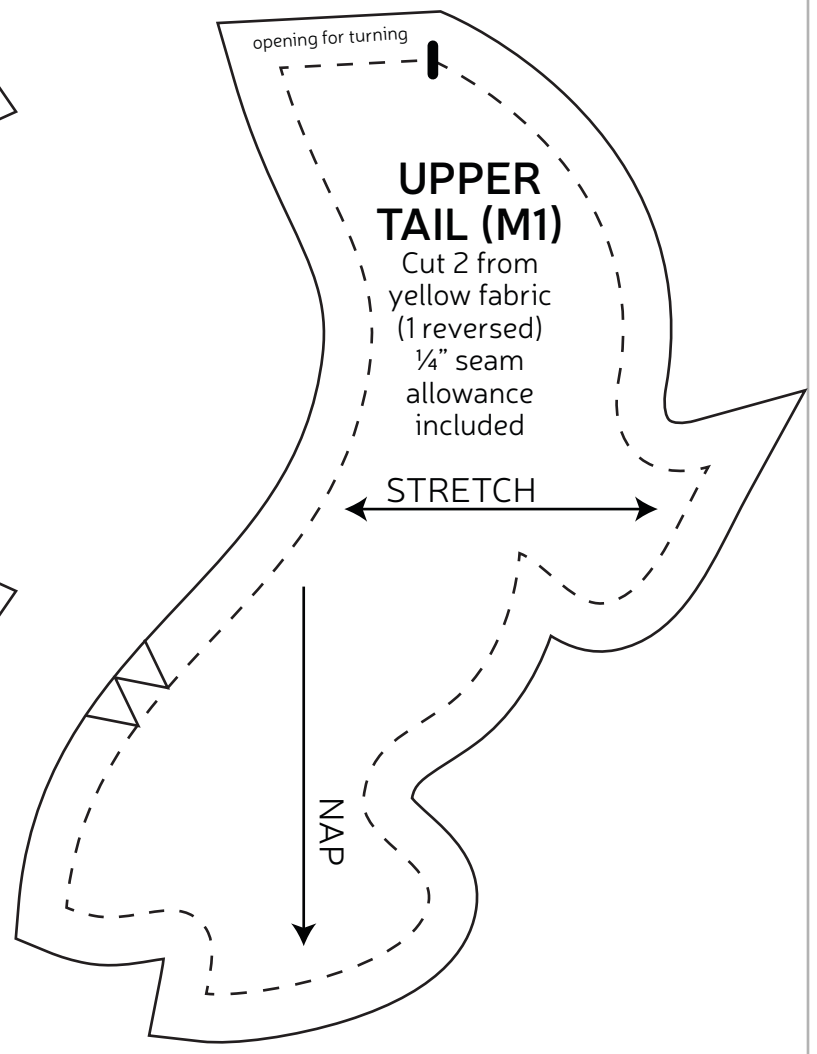
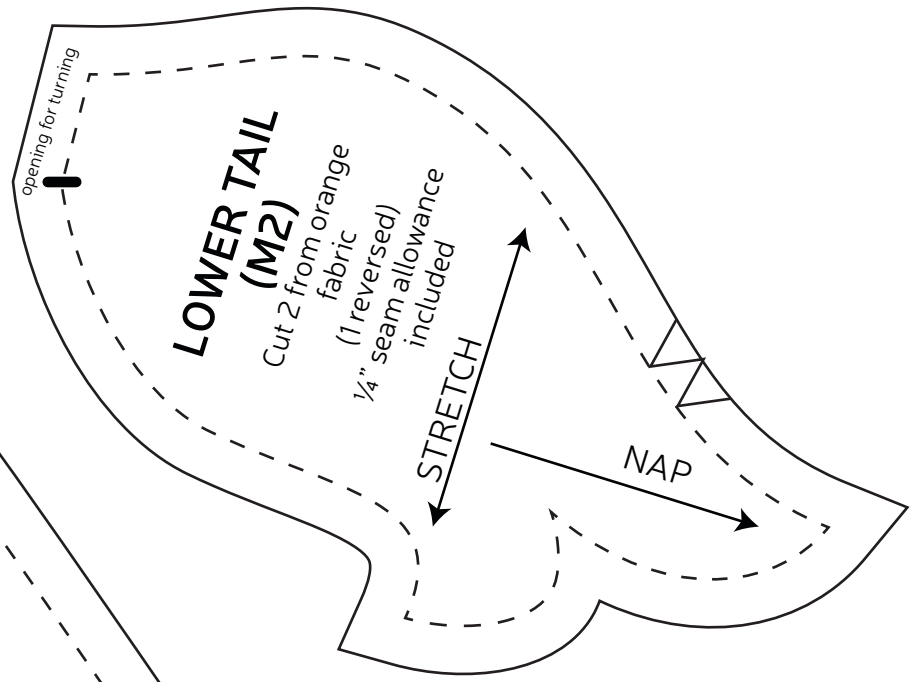
STRETCH

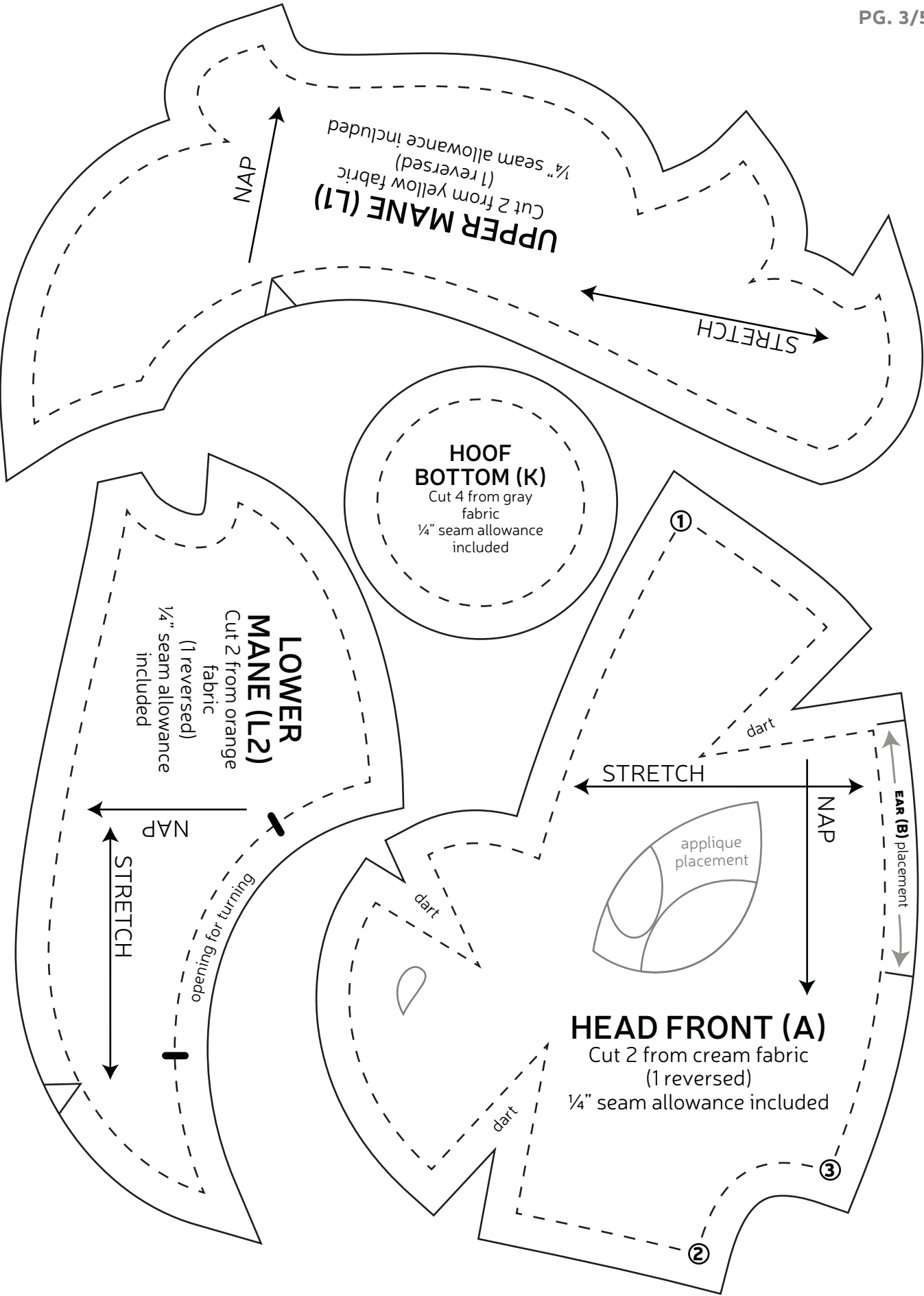
NAP

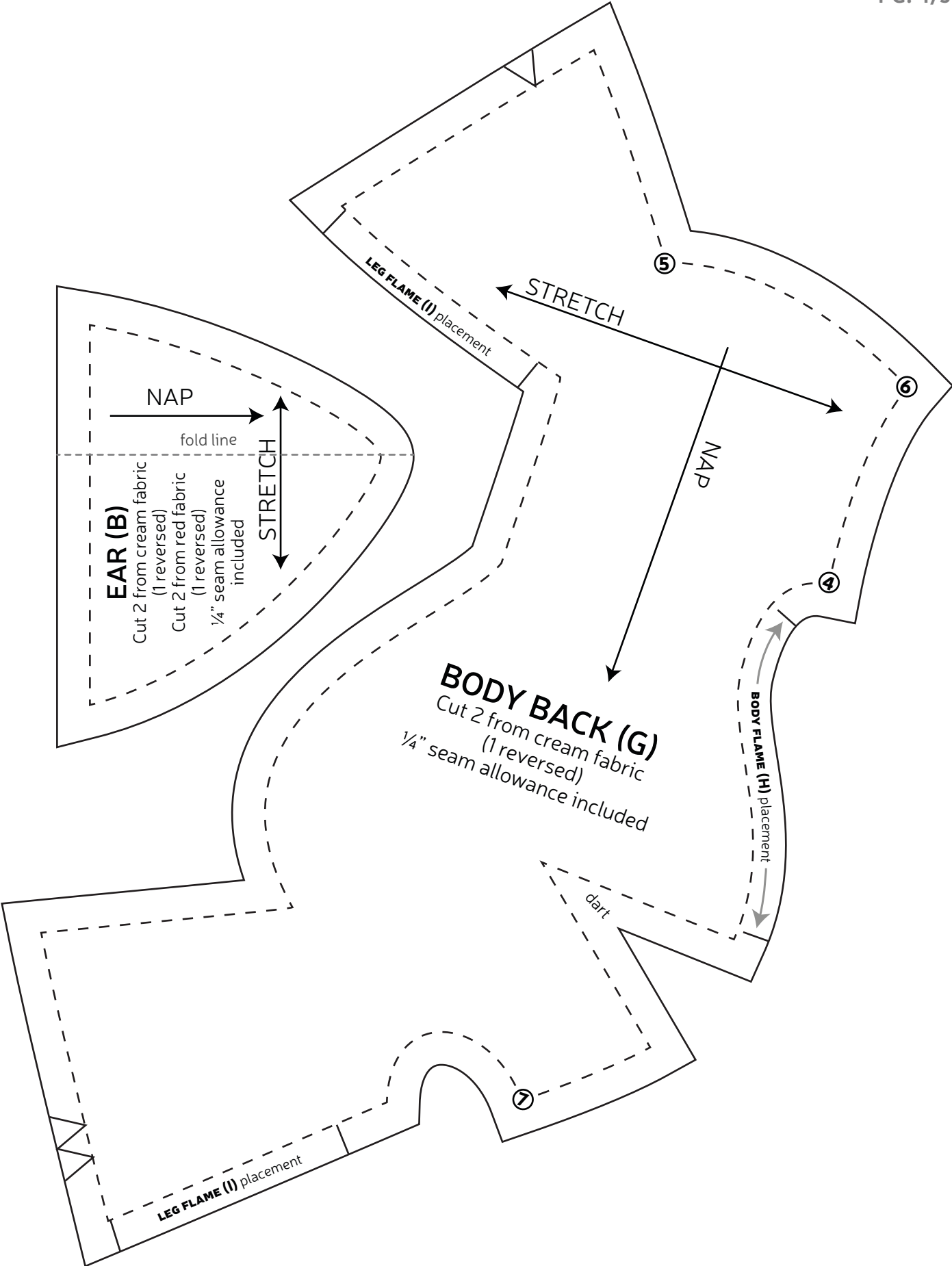
7

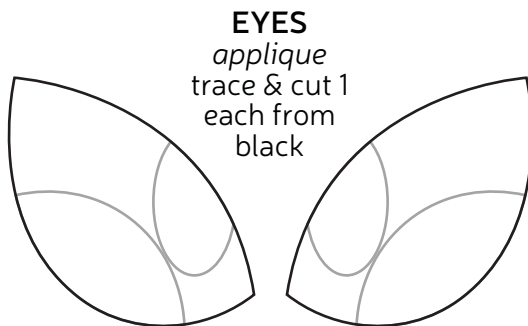
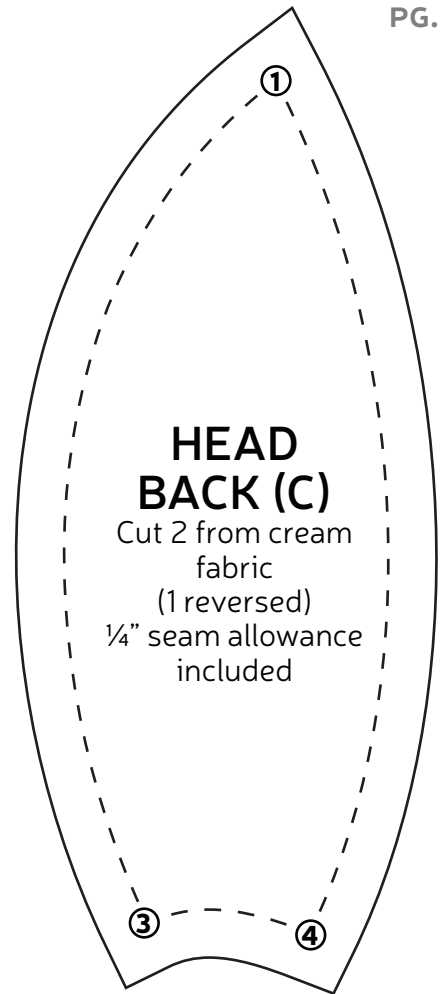
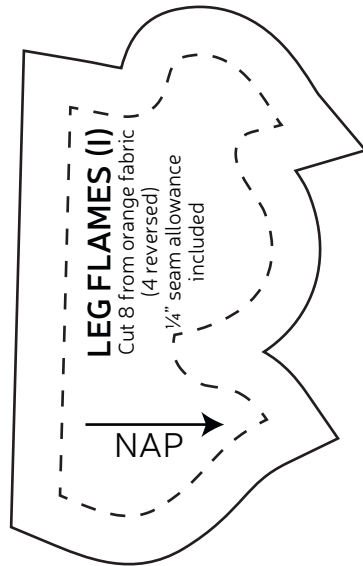
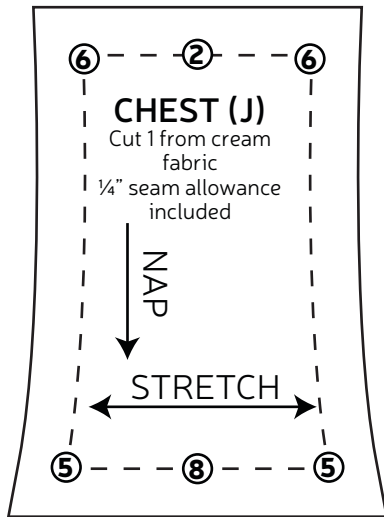
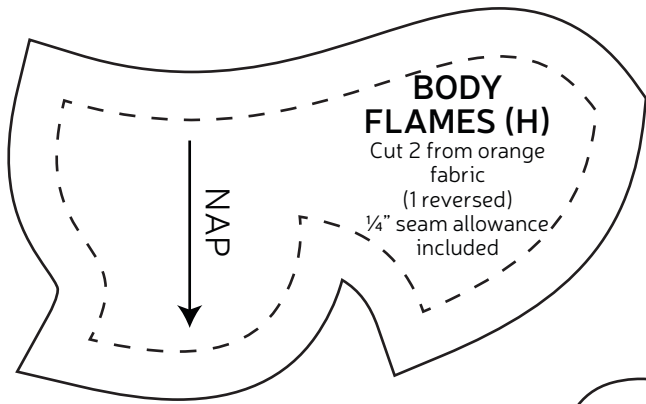
A1 A2

RELATIVE (R)

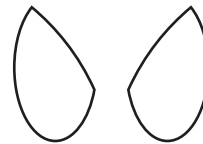








EYE SHINES
applique
 trace & cut 1 each
 from white



EYE HIGHLIGHTS
applique
 trace & cut 1 each
 from brown



NOSTRILS
applique
 trace & cut 1 each
 from black

