

# ZORUA

## plush



a free sewing pattern by



# zorua plush

These instructions will go over how to make a sweet laying version of the Pokémon Zorua. It's a fox-like dark type Pokémon from the Unova region, and this version has a cute belly down pose with accent paws, pointy nose, and fluffy neck fur. But as a bonus there's also the Hisuian version! This is for a ghost-type Pokémon that is true to theme because it has adorable swirly fur tufts on its head, neck, and tail. Both creatures are just brimming with unique character so it'll be hard to pick which one to make!

## MAKES:

### ONE PLUSH:

About 8" long from tip of nose to back feet, 5" tall from belly to top of head, and 4" wide from each side of back feet.

## SKILLS USED:

- Fusible web applique
- Curved sewing
- Ladder stitch
- Sewing small pieces
- Matching notches and points
- Basting
- Darts
- Gathering; gathering stitch

## DIFFICULTY:



The hardest part of this plush is likely all the curves to sew in the body as well as all the tiny details. The tiny details really make this character unique, but just be warned that they take some extra time.

### UNOVAN

short  
head  
tuft

pointed  
nose

fluffy  
neck

long  
curvy  
tail

### HISUIAN

belly  
down  
pose

multicolored  
fur tufts

long curvy  
neck fluff

sew desu ne?

| [WWW.CHOLYKNIGHT.COM](http://WWW.CHOLYKNIGHT.COM) |

## MATERIALS & TOOLS:

- sewing thread to match main fabric and applique fabrics
- poly-fil stuffing
- basic sewing tools (sewing machine, scissors, iron, needles, pins, fabric marker, seam ripper)



### UNOVA

- ¼ yd. of dark gray fabric for body
- ⅛ yd. (or 9" x 5") of dark red fabric for paw tips
- ¼ yd. (or 15" x 9") of black fabric for neck fluff
- 3" x 3" of white applique fabric for eye whites and eye shines
- 3" x 3" of turquoise fabric for irises
- 6" x 6" of dark red fabric for eyelids, eyebrows, and head fluff accent
- 4" x 4" of black fabric for mouth, nose, and inner ears
- 8" x 8" of light or heavy duty fusible web



### HISUI

- ¼ yd. of light gray fabric for body
- ⅛ yd. (or 9" x 5") of dark gray fabric for paw tips
- ⅛ yd. of white fabric for lower fluff pieces
- ⅛ yd. of pink fabric for middle fluff pieces
- ¼ yd. (or 9" x 9") of red fabric for upper fluff pieces
- 3" x 3" of white applique fabric for eye whites and eye shines
- 3" x 3" of yellow fabric for irises
- 5" x 5" of light pink fabric for eyelids and ear tips
- 2" x 2" of dark pink fabric for eyebrows
- 4" x 4" of dark gray fabric for nose and inner ears
- 7" x 7" of light or heavy duty fusible web

**sew desu ne?**

| [WWW.CHOLYKNIGHT.COM](http://WWW.CHOLYKNIGHT.COM) |

## fabric comparison:



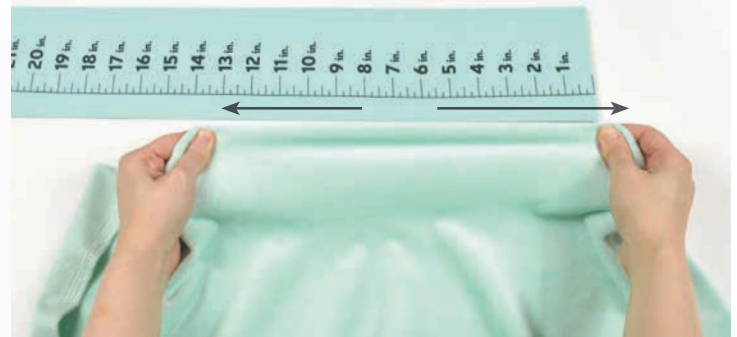
## SUGGESTED MAIN FABRICS:

### MINKY OR FLEECE

Medium weight, plush fabrics with about 20%-30% stretch along the crosswise grain work best for this project. The varieties shown to the left are some good options and names to look for. Try to avoid heavyweight versions of fleece that are intended for outdoor apparel or they may cause trouble for the detailed areas.

You can also use non-stretch fabrics (such as felt), but be aware that the curves will be more difficult to sew and the result will look different. The plush will become more elongated and the edges will look sharper.

10" of minky  
stretches to 13"  
= 30% stretch



**MINKY**

**VS.**

**FELT**



**sew desu ne?**

| [WWW.CHOLYKNIGHT.COM](http://WWW.CHOLYKNIGHT.COM) |





## APPLIQUE FABRICS:

- Good applique fabrics include **flannel**, **cotton**, **felt**, **minky**, and **fleece**.
- Flannel and cotton are best for detailed applique with a lot of layers because they're thinner. Meanwhile felt, minky, and fleece are better for simpler applique like body markings.
- **Flannel** is used in the example instructions (page 9).



## FUSIBLE WEB:

- Fusible web adhesive is a sheet of adhesive with a paper backing.  
**Not to be confused with fusible interfacing**, which is adhesive attached to a fabric/fiber backing.
- Some common brands are **Pellon** & **HeatnBond**
- In countries outside the US, it may also be known as **bondaweb**
- It comes in **light** and **heavy duty** varieties. Lightweight strength is meant for applique you intend to sew later. Heavy duty versions are for a no-sew bond. If you try to sew them later your machine might have trouble penetrating the glue.



sew desu ne?

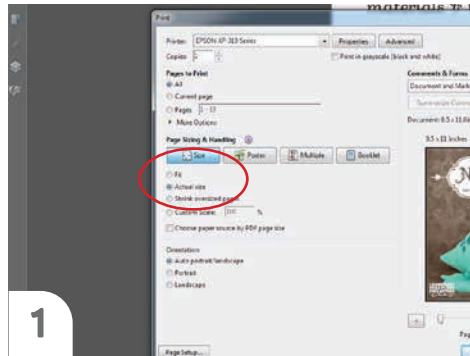
| [WWW.CHOLYKNIGHT.COM](http://WWW.CHOLYKNIGHT.COM) |

## PRINTING THE PATTERN:

Set your computer to print **PAGES 31-38.**

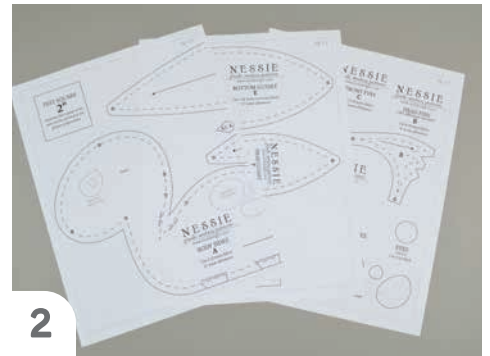
If you're unfamiliar with printing and assembling a .pdf pattern, read the steps to follow.

For the best results, use a .pdf reader like **ADOBE READER**. That's what is shown here and will give you the most control over the settings.



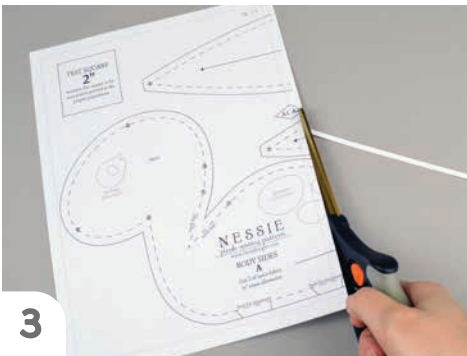
1

At the print dialog box, check the box that says print at "Actual Size" or 100%. Any other selection (such as "Fit to page") will distort the pattern so it's slightly larger or smaller and we don't want that.



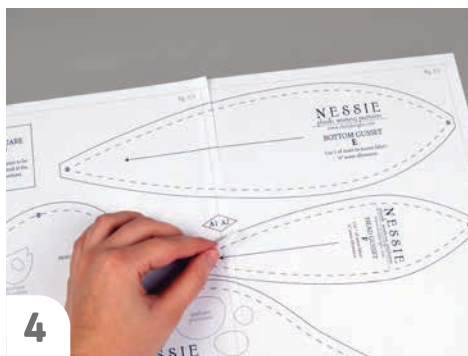
2

Print the pages needed for the file. You might have one or more. Either way, be sure you have the full collection by noting the page numbers in the corner.



3

It's likely your printer will have a margin that ensures your image doesn't print to the very edge. Assembly will be easier if you trim off this blank margin edge. This will give you pages that overlap slightly during assembly. If you trim across the gray outline boxes, this will give you pages that don't overlap but rather butt against each other.



4

To line up the pattern pages, match up the corresponding diamond shapes. Each diamond will have a letter, so it's simply a matter of matching A1 to A2, B3 to B4 and so on. The faint gray lines indicate the border of every page, you should be able to line those up as well. When the diamond goes together, tape it in place.

If you have many pages, it's easier to tape up the pages into rows first. Then tape the rows together into a full block.



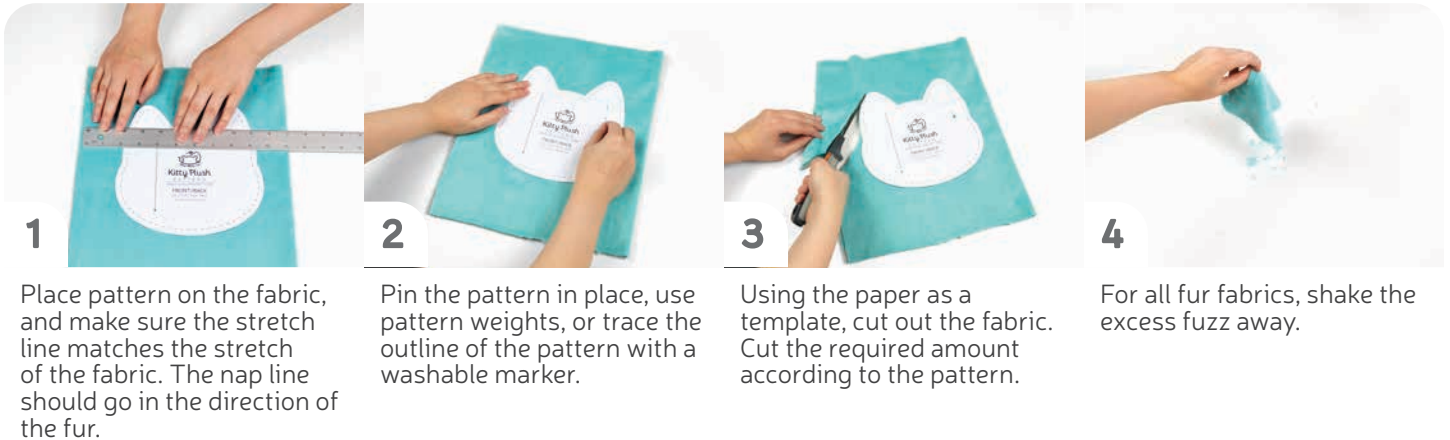
5

You can trace the patterns onto a different paper, or you can also just cut them straight from the printer paper -- be sure that each piece is fully taped together along the joins so they don't fall apart when you cut them.

**sew desu ne?**

| [WWW.CHOLYKNIGHT.COM](http://WWW.CHOLYKNIGHT.COM) |

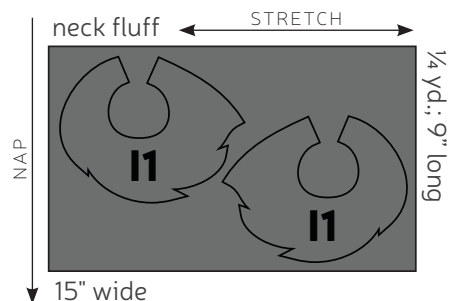
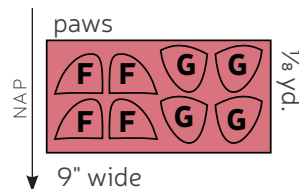
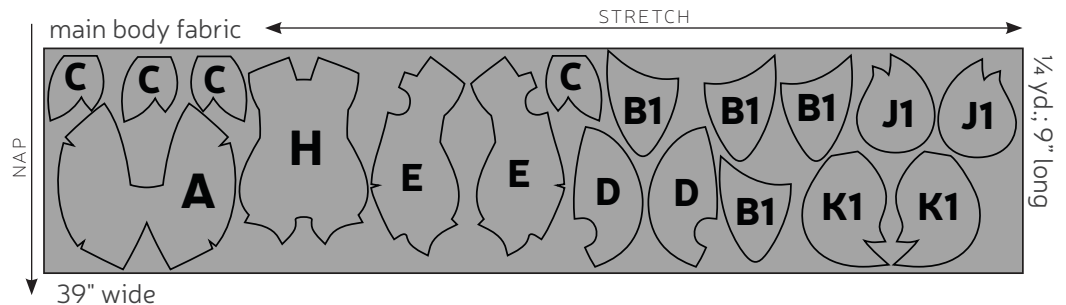
## CUTTING THE FABRIC:



## CUTTING LAYOUT: UNOVA VERSION

### Template checklist:

- ☐ A - Head front
- ☐ B1 - Unova ears
- ☐ C - Cheek fluff
- ☐ D - Head back
- ☐ E - Body back
- ☐ F - Front paws
- ☐ G - Back paws
- ☐ H - Belly
- ☐ I1 - Unova neck fluff
- ☐ J1 - Unova head fluff
- ☐ K1 - Unova tail



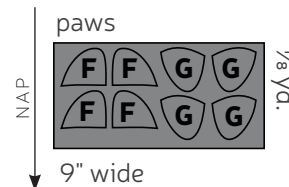
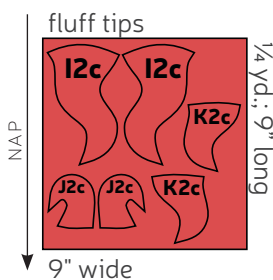
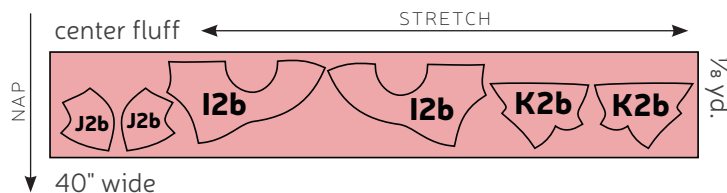
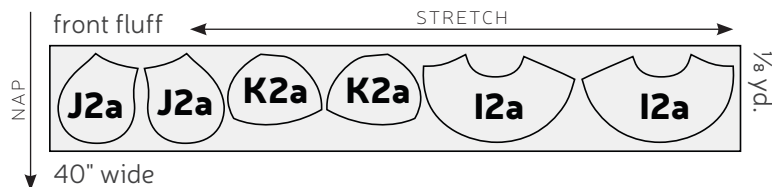
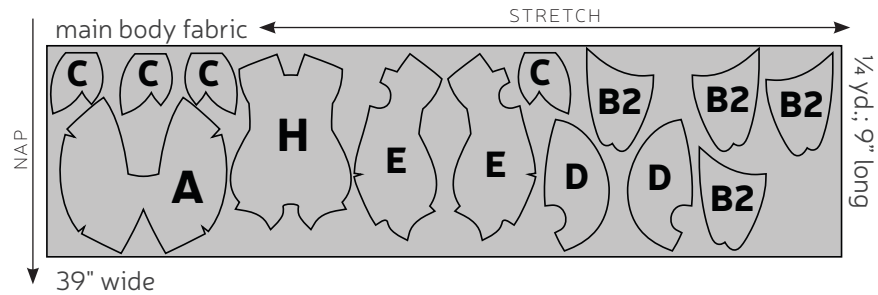
sew desu ne?

| [WWW.CHOLYKNIGHT.COM](http://WWW.CHOLYKNIGHT.COM) |

## CUTTING LAYOUT: HISUI VERSION

### Template checklist:

- ☐ A - Head front
- ☐ B2 - Hisui ears
- ☐ C - Cheek fluff
- ☐ D - Head back
- ☐ E - Body back
- ☐ F - Front paws
- ☐ G - Back paws
- ☐ H - Belly
- ☐ I2a - Hisui neck fluff front
- ☐ I2b - Hisui neck fluff middle
- ☐ I2c - Hisui neck fluff tip
- ☐ J2a - Hisui head fluff front
- ☐ J2b - Hitsui head fluff middle
- ☐ J2c - Hisui head fluff tip
- ☐ K2a - Hisui tail base
- ☐ K2b - Hisui tail middle
- ☐ K2c - Hisui tail tip



## BEFORE YOU BEGIN:

- Briefly read the project instructions so you know what to expect.
- If desired, mark the cut fabric pieces with the markings and symbols from the pattern. Or wait until the applicable step before transferring.
- Note that a 1/4" seam allowance is used throughout the project, which is included in the pattern templates.

sew desu ne?

| [WWW.CHOLYKNIGHT.COM](http://WWW.CHOLYKNIGHT.COM) |



## 1. FUSE THE EYE APPLIQUE



**a.** Grab your fusible web and applique templates. Trace the pieces for the eyes. Here we're making the eyes and mouth for the **UNOVAN ZORUA**. You should have:

- **eye whites** (2, white)
- **eyebrows** (2, dark red)
- **mouth lines** (2, black)
- **irises** (2, turquoise)
- **eye shines** (2, white)
- **eyelids** (2, dark red)
- **nose** (1, black)

**b.** Fuse the bumpy (adhesive) side of the fusible web onto the wrong side of the applique fabrics.

**c.** Cut out your applique pieces and grab your **HEAD FRONT** piece (A). Grab the **eye white** applique piece. Set your paper pattern on top of the head front piece. Align the applique piece on top where the placement markings are. Next, carefully pull the paper pattern away while holding the applique piece in place.



**d.** Fuse the applique pieces with your iron. Use a press cloth, such as a scrap piece of cotton. This will help protect any polyester or fuzzy fabrics from melting or scorching.

**e.** Add the **iris** pieces next. Use the paper pattern and photos as a placement guide. Add the **eye shines** on top of the **irises**.

**f.** Lastly add the smallest pieces. Add the **eyelids** on top of the **eyes**, then the **eyebrows** above the eyes. Lastly add the **nose** and **mouth** lines.

sew desu ne?

| [WWW.CHOLYKNIGHT.COM](http://WWW.CHOLYKNIGHT.COM) |

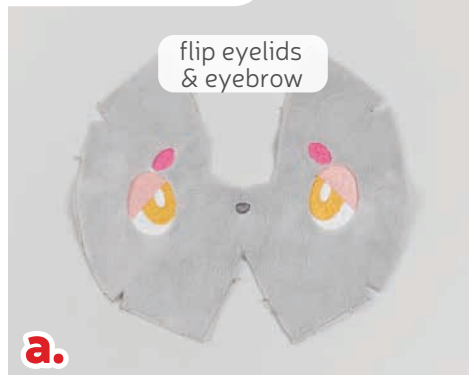
## 2. FUSE THE REMAINING BODY PIECES

- a. If you're making the **HISUIAN ZORUA**, the **eyelids** and **eyebrows** should be flipped the other way so they look sad. Also leave off the **mouth**.
- b. You'll also want to take this time to add the **accent** to your **UNOVAN HEAD FLUFF** (J1)
- c. The **UNOVAN EARS** (B1) also get **inner ear applique**.
- d. Meanwhile the **HISUIAN EARS** (B2) get **ear tips** first. Fuse these to all four ear pieces.
- e. Take two of your **HISUIAN EARS** and applique the **inner ears** over the **ear tips**.

If you used heavy duty fusible web, you can keep the pieces fused without sewing, or you can sew them in place a number of ways. I've used a zigzag stitch here.

→ *Refer to the next step for some other applique options.*

HISUIAN:



UNOVAN:



UNOVAN:



HISUIAN:

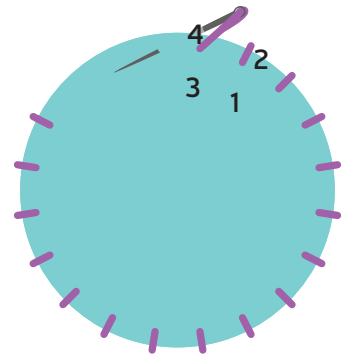
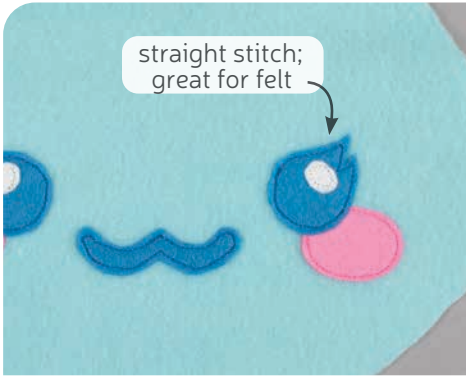


HISUIAN:



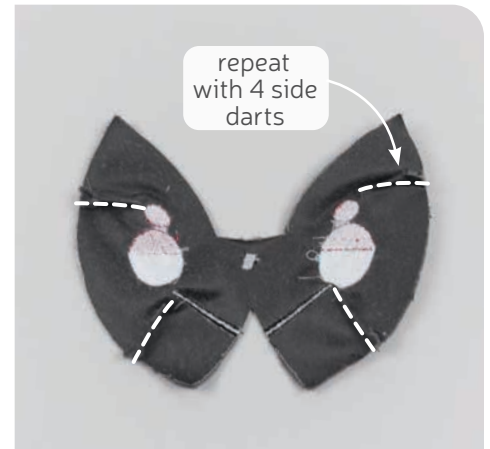
sew desu ne?

| WWW.CHOLYKNIGHT.COM |



### 3. OTHER APPLIQUE OPTIONS

- Other good options for applique include a straight stitch, which involves sewing around the edge of the applique pieces with a straight stitch using matching thread -- about 1/8" in from the edge.
- You can also applique by hand; I prefer a whipstitch. Thread a hand-sewing needle with some matching thread and knot it. Bring the thread up from the back of the project; about 1/8" in from the edge of the applique shape. Bring it down perpendicular from the curve, just outside of the applique shape. This completes one stitch.
- For the next stitch, bring the needle back up about 1/8" away from the previous stitch and 1/8" in from the edge just as in the first stitch. Once again, bring it down just outside the applique shape. Continue this way until you've sewn around the shape.



### 4. SEW THE CORNER DARTS

- Grab your **HEAD FRONT** piece (A). This piece has several **darts** that are labeled all around the edge of the pattern. We're going to sew the smaller **darts** on the sides first. Start by finding one and folding the fabric along the point of the **dart** so right sides are facing. Pin the fabrics together.
- Sew from the opening of the **dart** into the fold of the fabric. Try to blend your stitching into the fold for a smooth transition and a rounder finish to the plush.
- Repeat this with the other three **darts** found on the sides. There should be four **darts** total.

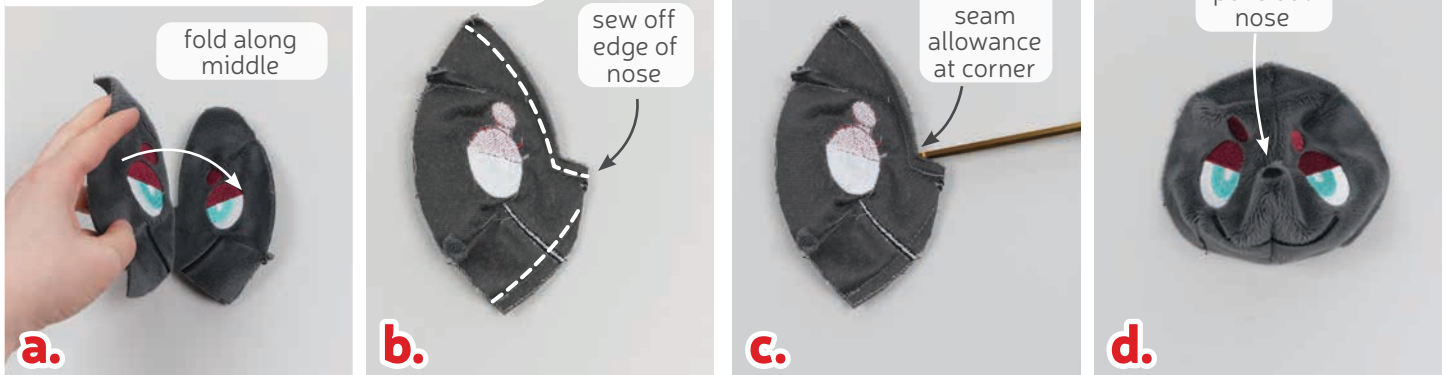
#### DARTS:

A wedge-shaped gap found in a pattern. When sewn in fabric, it creates a tuck in the fabric and develops a 3D shape. The diagonal sides of the wedge are the **LEGS**; these are matched up and sewn to the **POINT** of the dart.

sew desu ne?

| WWW.CHOLYKNIGHT.COM |

## 5. SEW THE CENTER DARTS



- a.** The final **darts** are found at the top and bottom center of the **HEAD FRONT (A)**. Sew these by folding the face in half so right sides are facing. The big wedge shapes at the top and bottom should match up.
- b.** Sew the bottom **dart** similar to the previous ones. Start at the opening (at point 2 if you're watching the **numbered points**) and blend your stitching into the fold at the end. For the top **dart**, start at the top (at **point 1**), pivot at the corner, then sew straight off the fold. This will give your plush a pointy nose.
- c.** Clip the seam allowance at the corner so this area will turn more cleanly. Turn the face right side out and poke out the nose.



## 6. SEW THE EARS

- a.** Grab your **EAR** pieces (B). Take one that has the inner ear applique and one that is without the inner ear applique. Align them with right sides facing and the raw edges matching up.
- b.** Sew the ear pieces together along the long curved edges. Leave the shorter slightly curved edge free for turning the piece right side out later. Repeat this with your other ear pieces so you have two ears total.

sew desu ne?

| [WWW.CHOLYKNIGHT.COM](http://WWW.CHOLYKNIGHT.COM) |





## 7. TURN THE EARS

- If you have **HISUIAN EARS** (B2), you'll want to trim the excess seam allowance at the inner corner. This will help the piece turn more cleanly when it's flipped.
- Turn your ears right side out through the opening in the bottom. You should have a mirrored pair as shown.



## 8. BASTE THE EARS



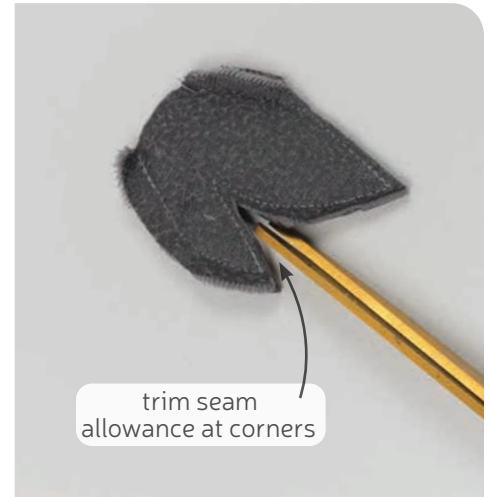
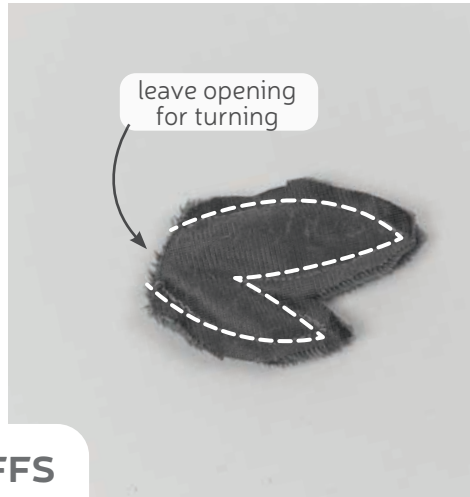
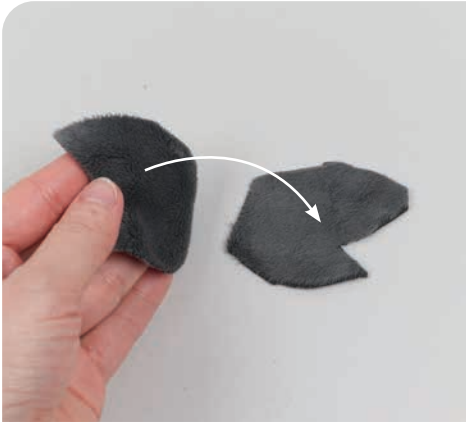
### BASTING:

A form of temporary sewing meant to hold pieces in place. A long stitch length is often used for this reason. The finished result is not meant to be seen and sometimes is even removed later (depending on your project).

- Grab your **HEAD FRONT** so far (A). Also grab your **EARS** (B). If you haven't already, note the **ear placement lines** found on the paper pattern for the head front. Grab your ears and align them within these **placement lines** so the inner ears are facing up.
- Now flip the ears downward so the inner ears are facing down. The raw edges should now be flush with the head. Pin the ears to the head. Baste the ears to the head within the seam allowance to hold them in place for future steps.

sew desu ne?

| [WWW.CHOLYKNIGHT.COM](http://WWW.CHOLYKNIGHT.COM) |



## 9. SEW THE CHEEK FLUFFS

- Grab your **CHEEK FLUFF** pieces (C). Take two of them and align them with right sides facing and the raw edges matching up.
- Sew the fluff pieces together along the pointed edges. Leave the straight edges free for turning the piece right side out later.
- Trim the excess seam allowance around the tight inner and outer corners of the cheek fluff. This will reduce bulk and increase flexibility so the pieces turn more cleanly. Repeat this step with your other cheek fluff pieces so you have two sewn pieces total.



## 10. BASTE THE CHEEK FLUFFS

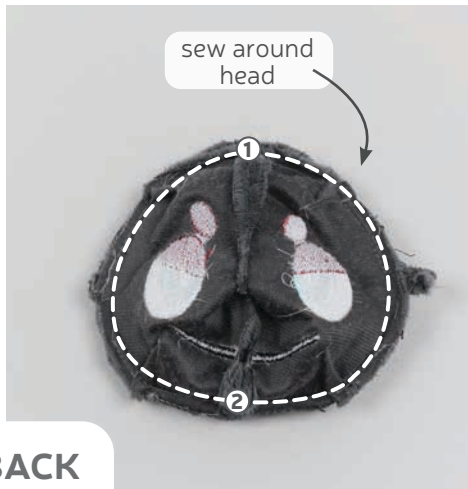
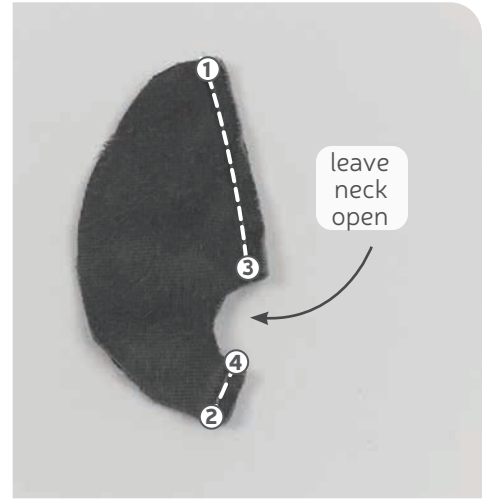
- Turn your **CHEEK FLUFF** pieces (C) right side out through the opening. Define the points with a chopstick or similar turning tool.
- Grab your **HEAD FRONT** piece (A) from before. If you haven't already, note the **cheek fluff placement lines** found on the paper pattern. Transfer these lines onto the right side of the fabric. Align the cheek fluff pieces within these lines so the raw edges match up.
- Now flip the cheek fluffs so they're pointing toward the middle of the face and line up the raw edges so they're flush. Baste the cheek fluffs to the head within the seam allowance to hold them in place for future steps.

sew desu ne?

| [WWW.CHOLYKNIGHT.COM](http://WWW.CHOLYKNIGHT.COM) |

## 11. SEW THE HEAD BACK

- a. Grab your **HEAD BACK** pieces (D). Align them with right sides facing and the raw edges matching up. Pin the center back edge, this is the edge with the **neck opening** and also goes from **point 1 to 3**, then **point 4 to 2**.
- b. Sew the head back pieces together along the center back, but skip over the **neck opening**. Sew from **point 1 to 3**, then **point 4 to 2**.

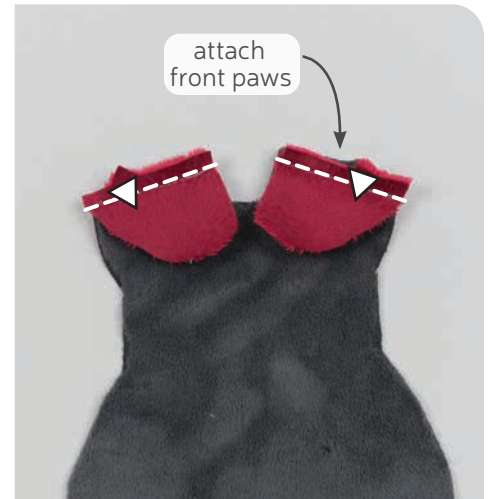
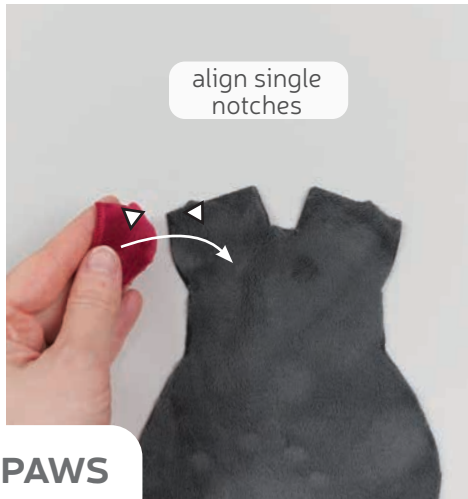


## 12. ATTACH THE HEAD BACK

- a. Grab your **HEAD FRONT** from before (A). Make sure the **EARS** (B) and **CHEEK FLUFFS** (C) are tucked inside, then line up your **HEAD BACK** (D) with the head front. For help with alignment, there are **numbered points** to look out for on the paper pattern. **Point 1** will line up at the center top and **point 2** will line up at the center bottom. Make sure right sides are facing and pin the head back to the front.
- b. Sew the head back to the front all the way around.
- c. Turn the head right side out through the opening in the back. Set aside the head for a moment while we work on the body.

sew desu ne?

| [WWW.CHOLYKNIGHT.COM](http://WWW.CHOLYKNIGHT.COM) |



### 13. ATTACH THE FRONT PAWS

- Grab your **BELLY** piece (H). Also grab two of your **FRONT PAWS** (F) and two of the **BACK PAWS** (G). These pieces will join together along the inner edges as shown here. But the next steps will go over it in detail. For help with alignment, you can look out for the **notch markings**. The front paws will match up with the **single notches** and the back paws will match up with the **double notches**.
- Grab one of your front paws and line it up with the belly along the **single notches**. This will help ensure the paws aren't attached backwards. Make sure right sides are facing and pin the fabrics together.
- Sew the front paw to the belly along the **single-notched edge**, then repeat with the other front paw for two total.



### 14. ATTACH THE BACK PAWS

- Grab your **BELLY** (H) and line it up with the **BACK PAW** (G) so right sides are facing and the **double notches** match up. Pin the fabrics together.
- Sew the belly to the back paw along the **double-notched edge**.
- Repeat this with the other back paw so both are attached.

sew desu ne?

| [WWW.CHOLYKNIGHT.COM](http://WWW.CHOLYKNIGHT.COM) |

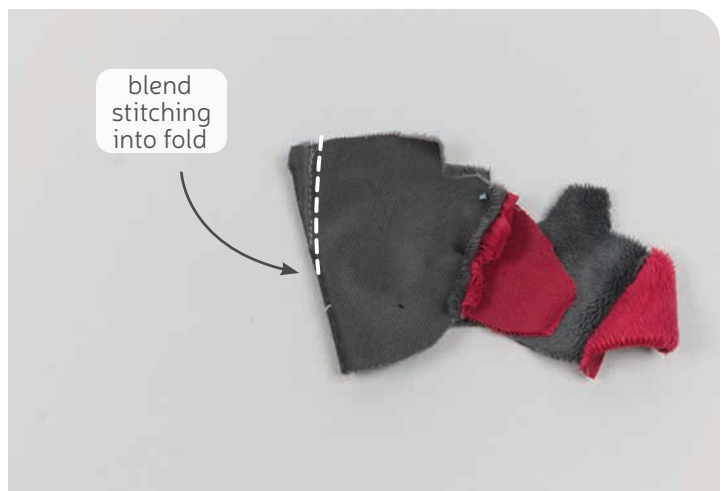
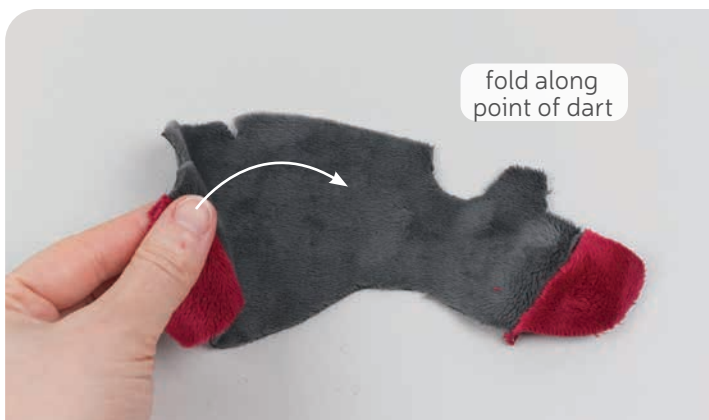


## 15. ATTACH THE PAWS TO THE BODY BACK

- a.** Grab your **BODY BACK** pieces (D) as well as your remaining **FRONT PAW** pieces (F) and **BACK PAW** pieces (G). These pieces will join to the body back the same way as the belly from the previous steps. Align the front paws along the **single-notched edge** and the back paws along the **double-notched edges**. Make sure right sides are facing and pin the fabrics together.



- b.** Sew the front paws to the body back along the **single-notched edges**. Sew the back paws along the **double-notched edges**. This should secure the front and back paws on both body back pieces.



## 16. SEW THE BODY DARTS

- a.** The **BODY BACK** (D) also has a **dart** similar to the head front from before. Sew it the same way starting by folding the piece along the point of the **dart** so right sides are facing and the slanted edges match up.
- b.** Sew it starting at the opening and work your way into the fold of the fabric. Try to blend your stitching into the fold for a smooth transition and a rounder finish to the plush. Repeat this with the other body back piece for two total.

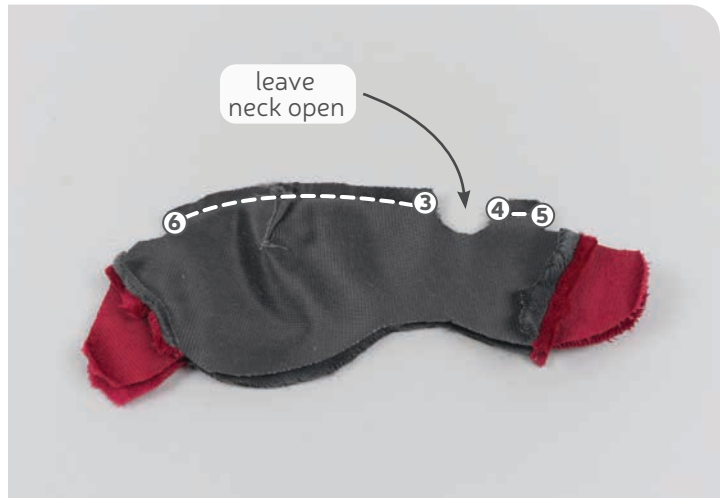
sew desu ne?

| [WWW.CHOLYKNIGHT.COM](http://WWW.CHOLYKNIGHT.COM) |



## 17. SEW THE BODY CENTER BACK

- Take your two **BODY BACK** pieces (D) and align them with right sides facing and the raw edges matching up. Pin the pieces together along the center back edge. This is the edge with the **dart** from the previous step. It also goes from **point 6 to 3**, then **point 4 to 5**.
- Sew the pieces together along the center back edge, but skip over the **neck opening** that's marked on the paper pattern. This should go from **point 6 to 3**, then from **point 4 to 5**.



## 18. SEW THE BACK TO THE BELLY

- Take your **BODY BACK** and align it with the **BODY FRONT** so right sides are facing and the raw edges match up. You can also look for the **numbered points** for help with alignment. **Point 6** will match up at the center bottom between the back legs. Meanwhile **point 5** will match up at the center top between the front legs. Pin the fabrics together all the way around.
- Sew completely around the body.



sew desu ne?

| [WWW.CHOLYKNIGHT.COM](http://WWW.CHOLYKNIGHT.COM) |

## 19. TRIM & FLIP THE BODY

- a.** Trim the excess seam allowance around the tight corners and curves. This is especially important at the corners where the arms and legs meet the body. It also helps to trim the seam allowance at the tip of the feet to reduce bulk. This will allow the piece to turn more cleanly.
- b.** Turn the body right side out through the opening in the neck, then define the feet with a chopstick or similar turning tool.



## 20. STUFF THE BODY & HEAD

- a.** Stuff the body semi-firmly with stuffing. Be sure to get a good amount in the front and back legs so they stay looking rounded and don't flatten over time.
- b.** Continue filling up the rest of the body as lightly or firmly as you like. It helps to use enough so there are no wrinkles in the fabric. You can also stuff it lighter for a more beanie-like feel.
- c.** Next move onto stuffing the head. Begin by getting a firm amount of stuffing in the nose so it stays looking pointy and doesn't deflate over time. Then fill up the rest of the head firmly so there are no wrinkles in the fabric near the seams and darts.

**sew desu ne?**

| [WWW.CHOLYKNIGHT.COM](http://WWW.CHOLYKNIGHT.COM) |



## 21. ATTACH THE HEAD

- Take your stuffed head and align it onto the body of your plush. The neck openings should match up at the seams. Make sure the head is facing forward.
- The head will be attached with a ladder stitch. To begin, grab a hand sewing needle, thread it, and knot the end. Take one stitch into the center back seam of the head at **point 3**, then take another stitch into the body also at **point 3**.
- Continue taking a stitch into the head then into the body working towards the front at **point 4**. It helps to take large basting stitches for this part. Just focus on getting the placement right rather than whether the seams are even or neat. Work all the way around the head in this manner until you reach the back. Check that you like the placement of the head and it isn't twisted or tilted.



## 22. TRIM THE THREADS

- If you like the placement of the head, go around again with tinier, neater stitches to hold it in place securely.
- When you're finished, stitch a knot into the end of the seam. Then insert the needle near the finished knot. Bring the needle out about 1-2" away and pull it through.
- Pull the thread taut while snipping the thread. The excess thread should sink back inside the plush -- all hidden!

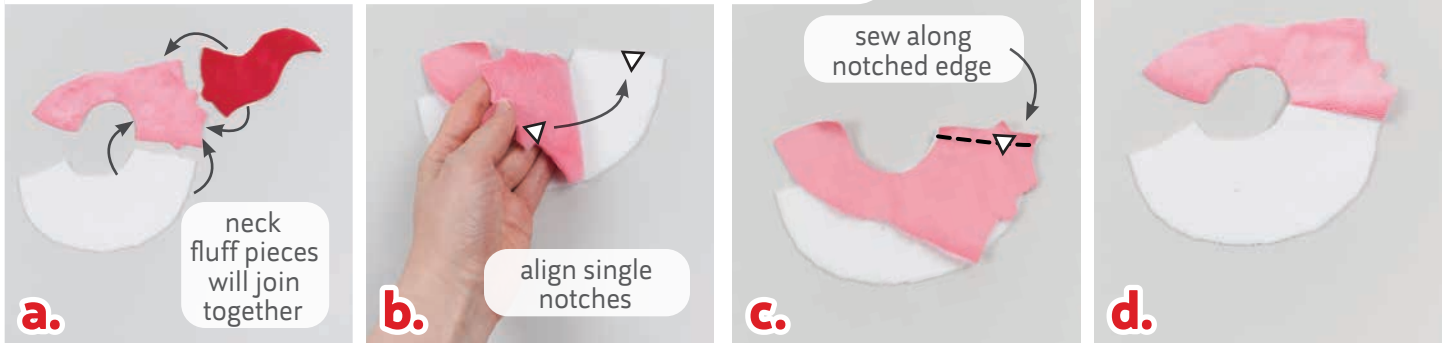
sew desu ne?

| [WWW.CHOLYKNIGHT.COM](http://WWW.CHOLYKNIGHT.COM) |



**For the HISUIAN NECK FLUFF:** continue below for with step 23.  
**For the UNOVAN NECK FLUFF:** skip ahead to step 24.

## 23. SEW THE HISUIAN NECK FLUFF SECTIONS



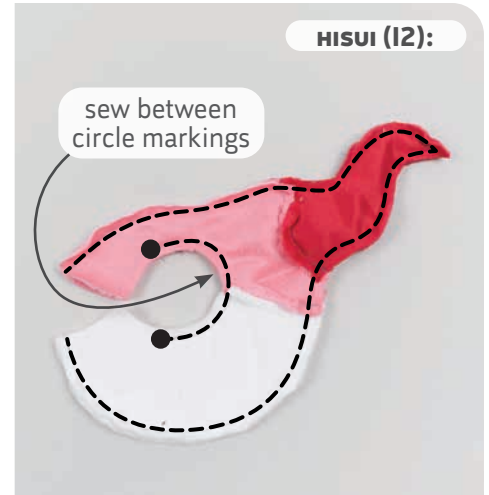
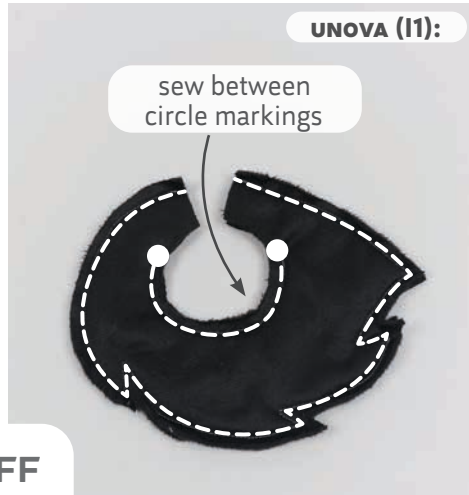
- a.** Grab your **HISUIAN NECK FLUFF** pieces (I2a, I2b, & I2c). These pieces will join together next to create the color shift for the neck fluff. They're joined together along the inner edges as shown here. But you can also look for the **notch markings** on the paper pattern for help with alignment.
- b.** Start by grabbing your neck fluff middle piece. Align it with the neck fluff front with right sides facing and the raw edges matching up. Pin the pieces together along the **single notched edge**. This will help ensure the piece isn't attached backwards.
- c.** Sew the pieces together along the **single notched edge**.
- d.** Open up the pieces when complete.



- e.** Up next is adding the **NECK FLUFF TIP** along the **double notched edge**.
- f.** Take your **NECK FLUFF MIDDLE** piece and align it with the tip so right sides are facing and the **double notches** match up.
- g.** Sew the middle to the tip along the **double notched edge**.
- h.** Open up the pieces when complete, then repeat this again with your other neck fluff pieces. This should create two pieces total for both sides.

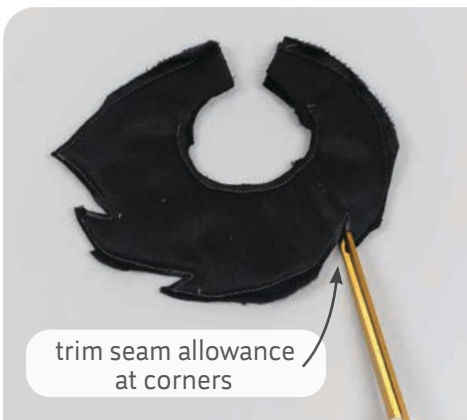
**sew desu ne?**

| [WWW.CHOLYKNIGHT.COM](http://WWW.CHOLYKNIGHT.COM) |



## 24. SEW THE NECK FLUFF

- Grab both of your **NECK FLUFF** pieces (I1 or I2). Align them with right sides facing and the raw edges matching up.
- Sew the pieces together all around the inner and outer curves. For the inner curves, be sure to sew between the **filled circles** only. Leave the straight edges open for turning the piece later.



## 25. CLIP & TURN THE NECK FLUFF

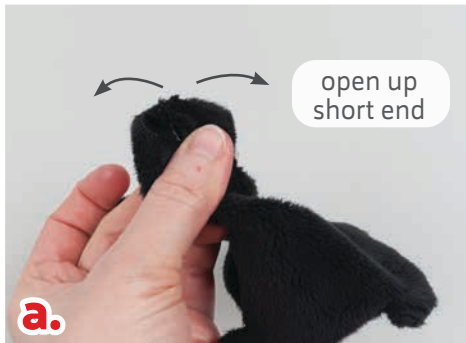
- Trim the excess seam allowance around any tight corners and curves of the **NECK FLUFF** (I1 or I2). This will help reduce bulk and increase flexibility when the piece is turned later.
- Turn the neck fluff right side out through the openings in the ends. Then define the points with a chopstick or similar turning tool.

sew desu ne?

| [WWW.CHOLYKNIGHT.COM](http://WWW.CHOLYKNIGHT.COM) |

## 26. JOIN & STUFF THE NECK FLUFF

HISUI (I2):



UNOVA (I1):



- a.** Take your **NECK FLUFF** piece (I1 or I2) and spread out the open edge that was left back in step 24. It should make one even line.
- b.** Repeat this on the other side of your neck fluff and align the two ends. Make sure right sides are facing and pin the fabrics together.

HISUI (I2):



UNOVA (I1):



fluff makes a full ring



- c.** Sew the neck fluff ends together along the pinned edge.
- d.** Open up the pieces when complete, and you should be left with a ring that has an opening in the middle.

- e.** Stuff the neck fluff lightly with stuffing, just enough so it puffs up a little. You may want to stuff it more firmly at the tips. This will keep the tips looking pointy so they don't flatten over time. The **HISUIAN** neck fluff has a very long tip, so stuffing firmly will keep it from flopping.

- f.** Tuck in the seam allowances along the inside of the neck fluff and ladder stitch it closed.



sew desu ne?

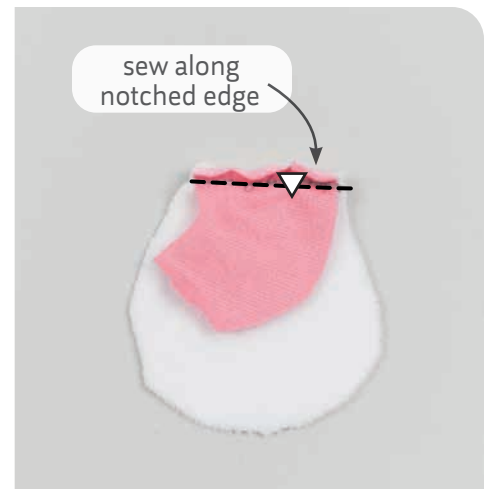
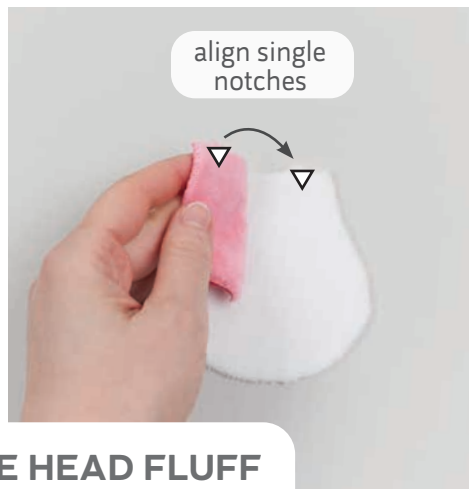
| WWW.CHOLYKNIGHT.COM |

## 27. ATTACH THE NECK FLUFF

- Take your finished neck fluff and loop it through the body of your plush. You'll need to squish the body a bit to make it fit.
- Loop it around the neck of your plush. You can ladder stitch it in place where it meets the head. Or you can leave it unattached if you enjoy twirling it around for fun.



**For the HISUIAN HEAD FLUFF:** continue below for with step 28.  
**For the UNOVAN HEAD FLUFF:** skip ahead to step 30.



## 28. ATTACH THE MIDDLE HEAD FLUFF

- Grab your **HISUIAN HEAD FLUFF** pieces (J2a, J2b, & J2c). These pieces will join together next to create the color shift for the head fluff. They're joined together along the inner edges as shown here. But you can also look for the **notch markings** on the paper pattern for help with alignment.
- Start by grabbing your **HEAD FLUFF MIDDLE** piece. Align it with the head fluff front with right sides facing and the raw edges matching up. Pin the pieces together along the **single notched edge**. This will help ensure the piece isn't attached backwards.
- Sew the pieces together along the **single notched edge**. Open up the pieces when complete.

sew desu ne?

| [WWW.CHOLYKNIGHT.COM](http://WWW.CHOLYKNIGHT.COM) |





## 29. ATTACH THE HEAD FLUFF TIP

- Up next is adding the **HEAD FLUFF** tip (J2c) along the **double notched edge**.
- Take your **HEAD FLUFF TIP** piece and align it with the middle so right sides are facing and the **double notches** match up.
- Sew the tip to the middle along the **double notched edge**.  
Open up the pieces when complete, then repeat this again with your other head fluff pieces. This should create two pieces total for both sides.

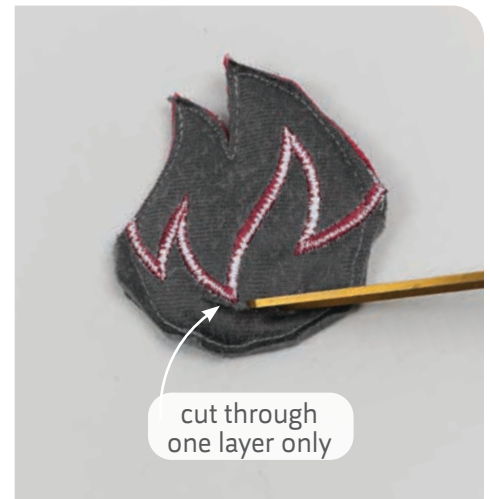


## 30. SEW THE HEAD FLUFF

- Grab your **HEAD FLUFF** pieces (J1 or J2). Align them with right sides facing and the raw edges matching up.
- Sew the pieces together all the way around the shape.

sew desu ne?

| [WWW.CHOLYKNIGHT.COM](http://WWW.CHOLYKNIGHT.COM) |



### 31. CLIP THE HEAD FLUFF

- Take your sewn **HEAD FLUFF** (J1 or J2) and trim the excess seam allowance around any tight corners and curves. This will help reduce bulk at the outer corners and increase flexibility at the inner corners. Then the piece will turn more cleanly.
- To turn the piece, cut a short slit into one layer of the fabric only, centered near the base. But you can also refer to the **cutting guide** on the paper pattern for extra help.



### 32. TURN & STUFF THE HEAD FLUFF

- Turn your **HEAD FLUFF** (J1 or J2) right side out through the opening that you cut. Define the points with a chopstick or similar turning tool.
- Stuff the head fluff lightly with stuffing. Be sure to get the tips stuffed firmly so they don't flatten over time. This is especially important for the **HISUIAN** fluff tip. Stuffing it firmly will help it stay stable and not flop over.

sew desu ne?

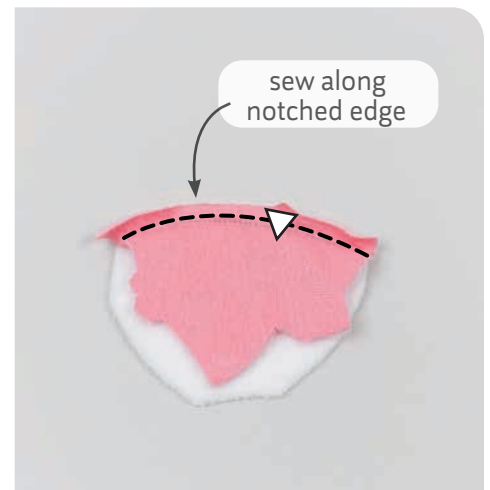
| [WWW.CHOLYKNIGHT.COM](http://WWW.CHOLYKNIGHT.COM) |

### 33. ATTACH THE HEAD FLUFF

- a. Take your stuffed **HEAD FLUFF** (J1 or J2) and align it onto the forehead of your plush. Make sure the cut side is facing the head and the tips are pointing up. Here it's placed just above the eyebrows.
- b. Ladder stitch the head fluff where it meets the head. It helps to stitch close to the seam along the front. Then when you reach the back, stitch close to the cut you made in the previous step.



**For the HISUIAN TAIL:** continue below with step 34.  
**For the UNOVAN TAIL:** skip ahead to step 36.



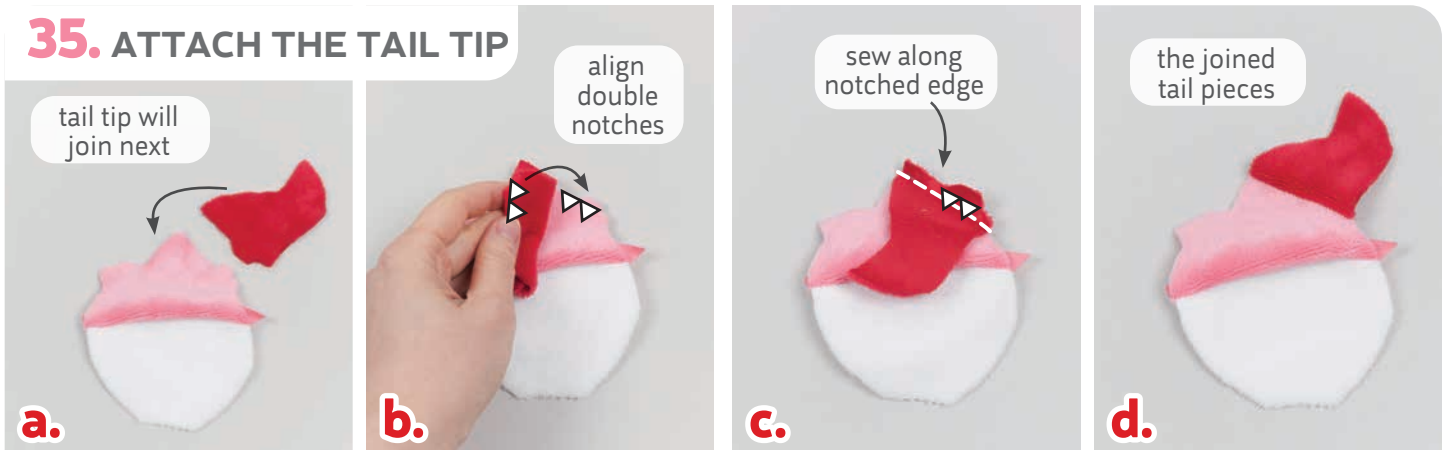
### 34. ATTACH THE MIDDLE TAIL

- a. Grab your **HISUIAN TAIL** pieces (K2a, K2b, & K2c). These pieces will join together next to create the color shift for the tail. They're joined together along the inner edges as shown here. But you can also look for the **notch markings** on the paper pattern for help with alignment.
- b. Start by grabbing your **TAIL MIDDLE** piece. Align it with the tail base with right sides facing and the raw edges matching up. Pin the pieces together along the **single notched edge**. This will help ensure the piece isn't attached backwards.
- c. Sew the pieces together along the **single notched edge**. Open up the pieces when complete.

sew desu ne?

| [WWW.CHOLYKNIGHT.COM](http://WWW.CHOLYKNIGHT.COM) |

### 35. ATTACH THE TAIL TIP



- a.** Up next is adding the **TAIL TIP** (K2c) along the **double notched edge**.
- b.** Take your tail tip piece and align it with the middle so right sides are facing and the **double notches** match up.
- c.** Sew the tip to the middle along the **double notched edge**.
- d.** Open up the pieces when complete, then repeat this again with your other tail pieces. This should create two pieces total for both sides.



- a.** Grab your **TAIL** pieces (K1 or K2). Align them with right sides facing and the raw edges matching up.
- b.** Sew the pieces together along the long curved edges. Leave the short straight edge free for turning the piece right side out later.  
This edge is also marked on the paper pattern between the **circle markings** for extra help with identifying it.
- c.** Trim the excess seam allowance around the tight corners and curves. Trim the inner corners to increase flexibility in those areas and trim the outer corners to reduce bulk. This will allow the piece to turn more cleanly.

sew desu ne?

| [WWW.CHOLYKNIGHT.COM](http://WWW.CHOLYKNIGHT.COM) |





UNOVA (K1):



HISUI (K2):



### 37. TURN & STUFF THE TAIL

- Take your **TAIL** (J1 or J2) and turn it right side out through the opening. Define the points with a chopstick or similar turning tool.
- Stuff the tail semi-firmly with stuffing. Be sure to stuff the tips more firmly so they don't flatten over time. This is especially important with the **HISUIAN** tail. Stuff the tip firmly so it stays stable and doesn't flop over.

sew  
around  
openingpull at thread  
to cinch closed

### 38. CINCH THE TAIL CLOSED

- Grab a hand sewing needle, thread it, and knot the end. Sew a gathering stitch around the opening of the tail, about ¼" away from the raw edge.
- Pull at the thread to cinch the opening closed. Sew a few knots into the center to hold it closed.

#### GATHERING:

The process of shortening the length of a piece of fabric by sewing long stitches through it. When the thread is pulled, it forms small folds that ruffle the fabric.

#### GATHERING STITCH:

A long version of the running stitch, which is a stitch done by weaving the needle in and out of a length of fabric going along a line. The long stitches (about ¼"-½" long) gather the fabric when pulled later.

sew desu ne?

| [WWW.CHOLYKNIGHT.COM](http://WWW.CHOLYKNIGHT.COM) |

### 39. ATTACH THE TAIL

- a. Take your plush's body and align the tail on the back. Here it's placed right over the body **dart** seams. Make sure the cinched end is facing the body.
- b. Ladder stitch the tail to the body around the base.



### CONGRATS!

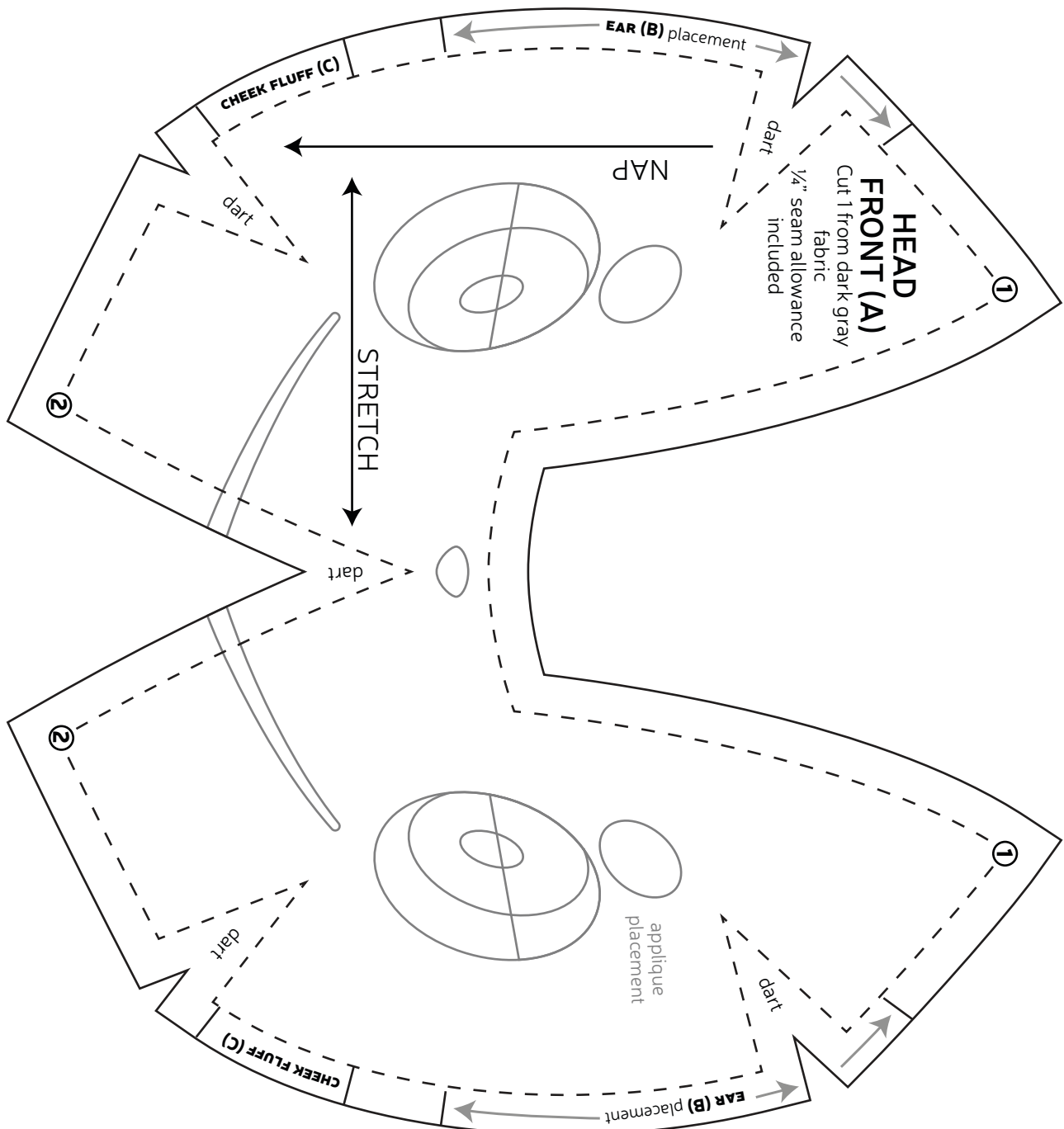
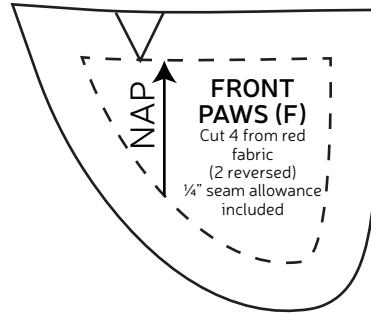
This completes your plush! Now go on a Pokemon adventure!

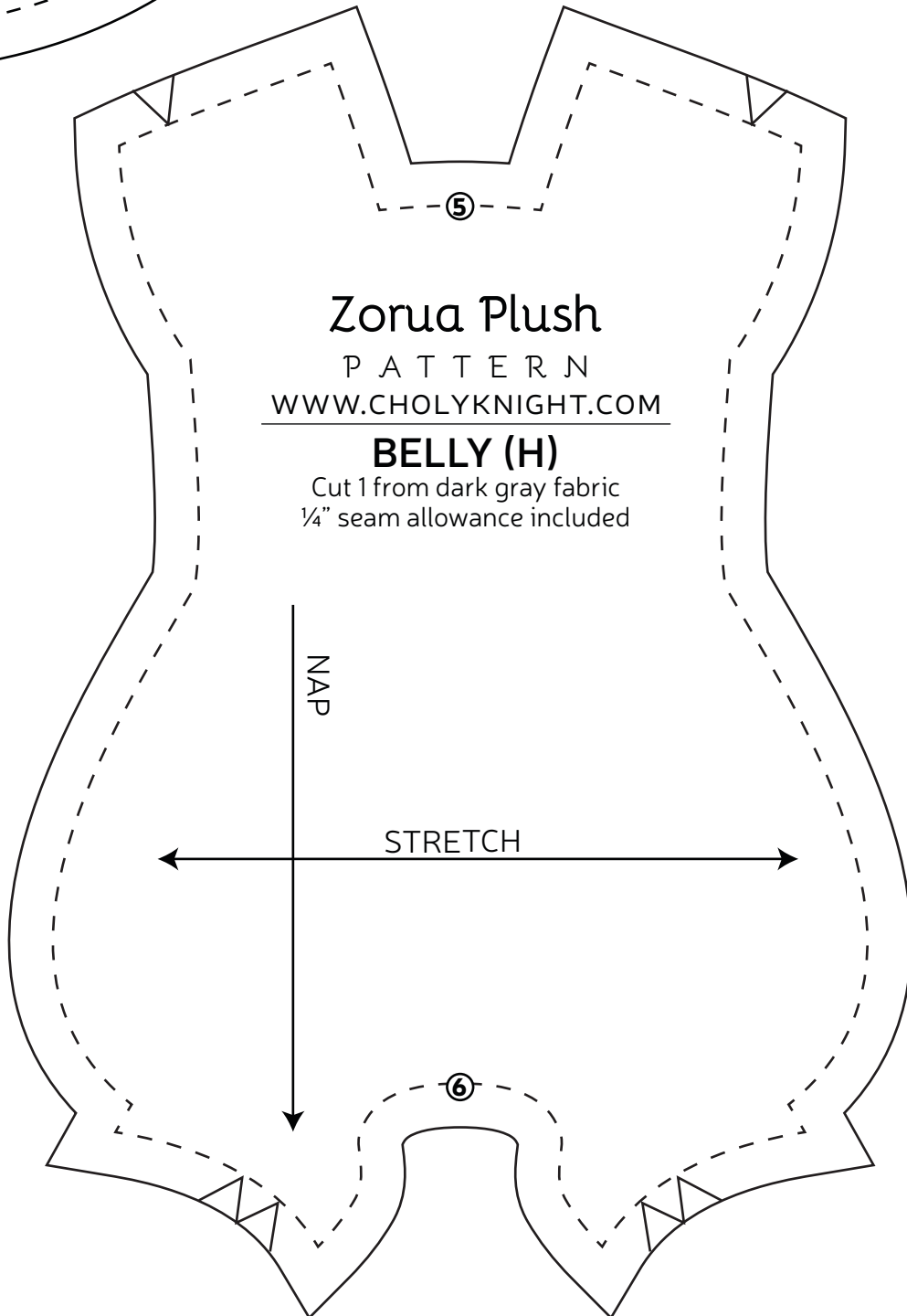
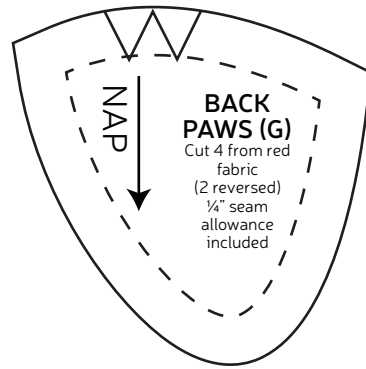
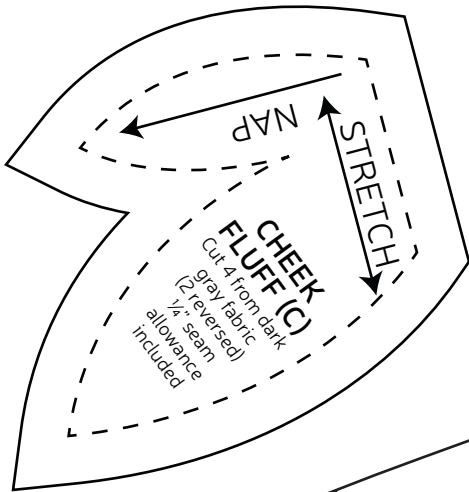
sew desu ne?

| [WWW.CHOLYKNIGHT.COM](http://WWW.CHOLYKNIGHT.COM) |

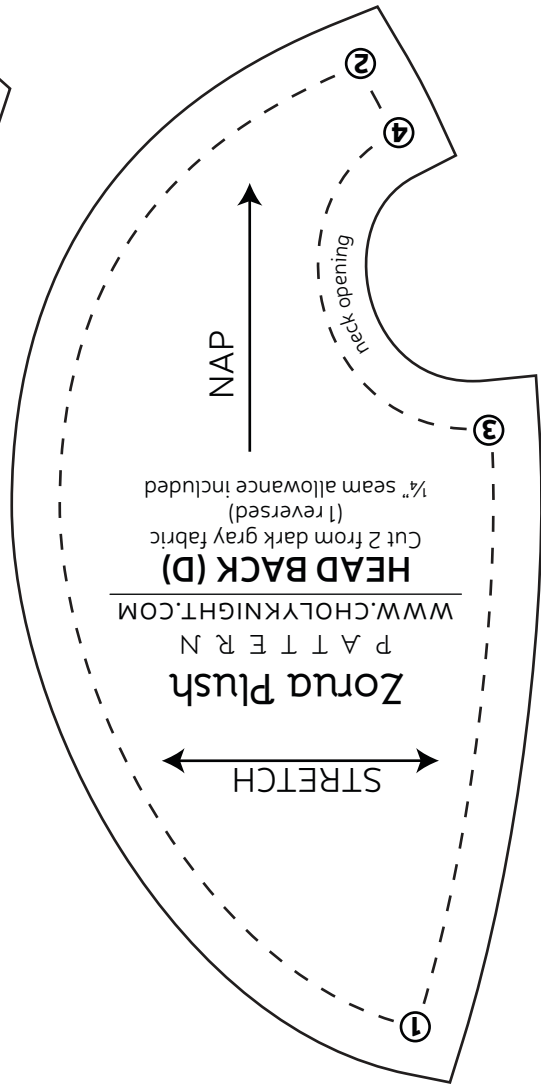
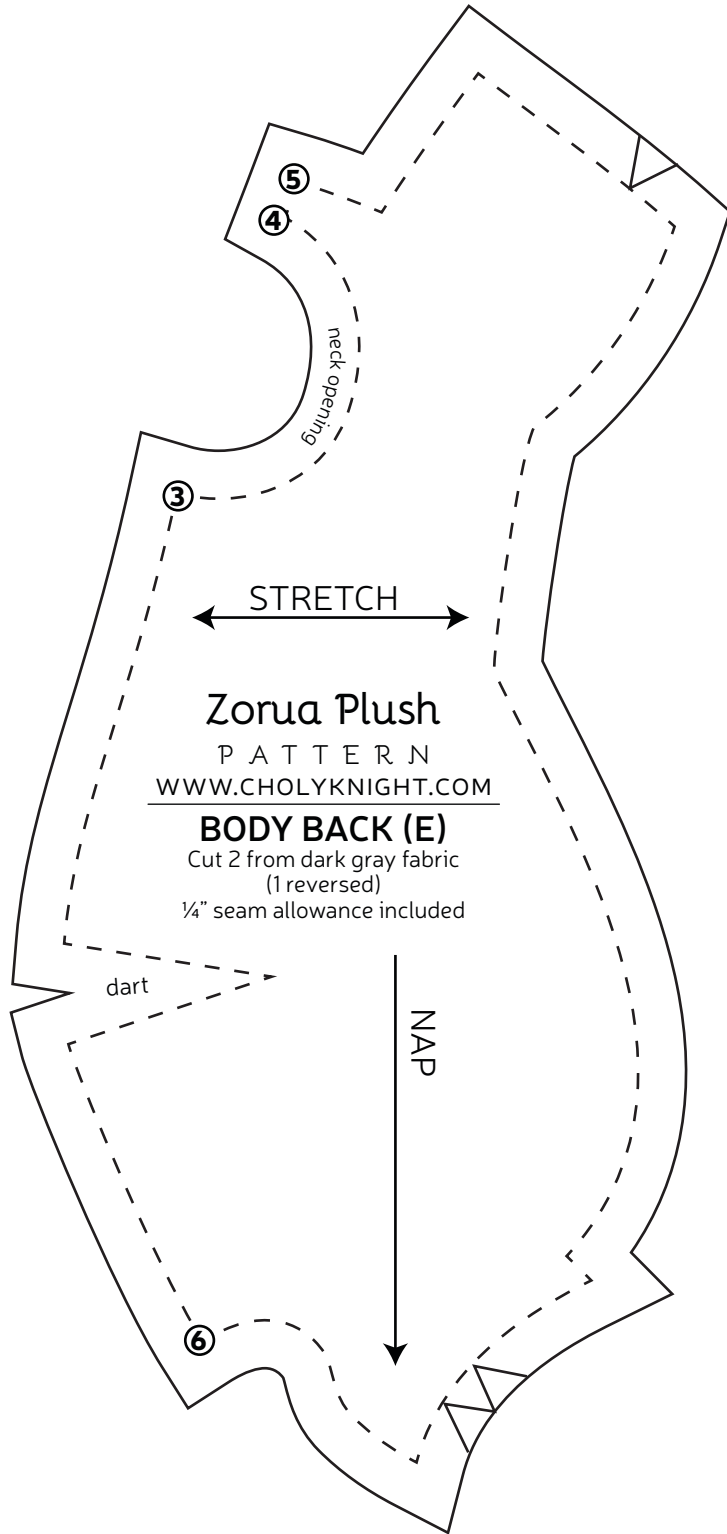
# TEST SQUARE 2"

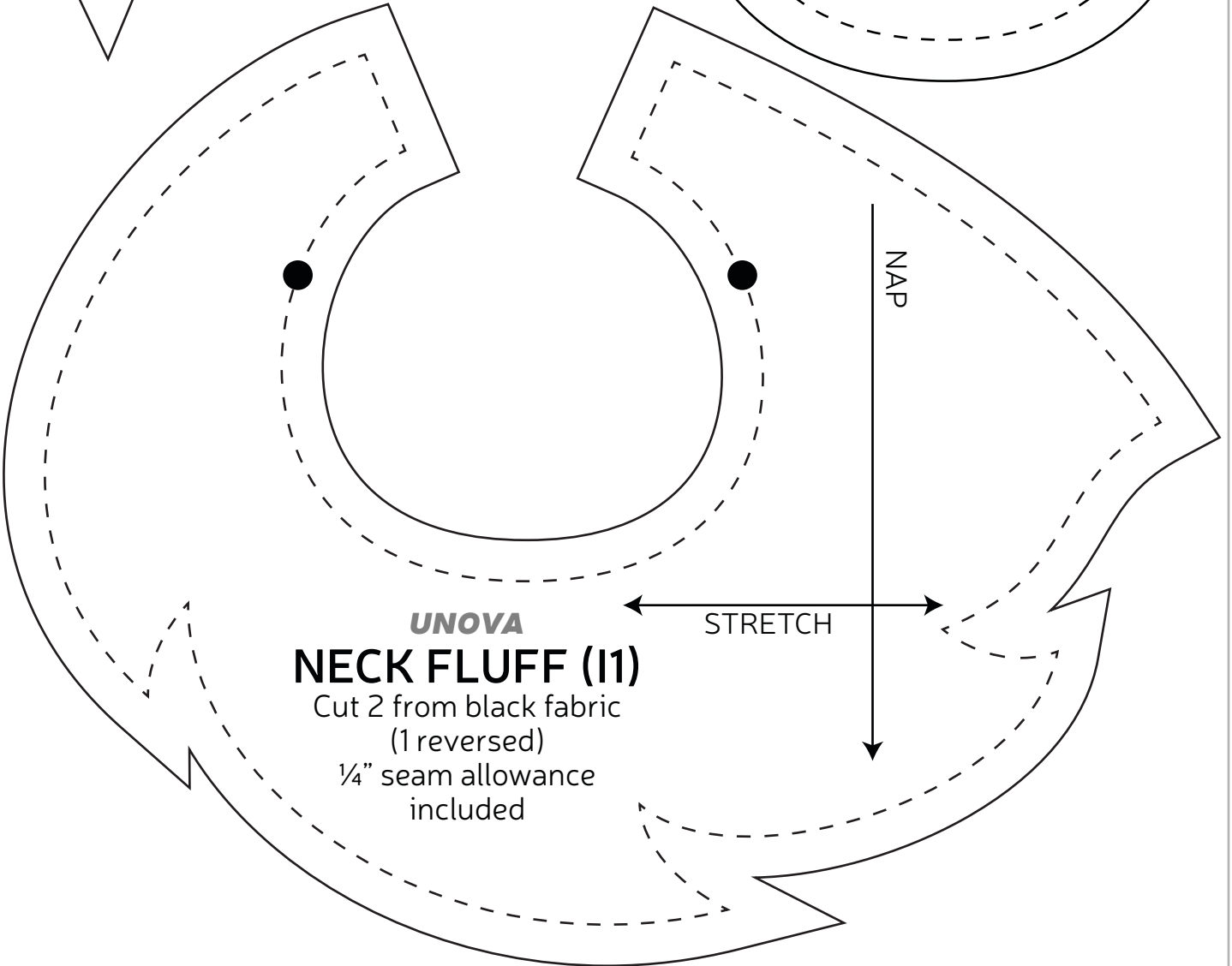
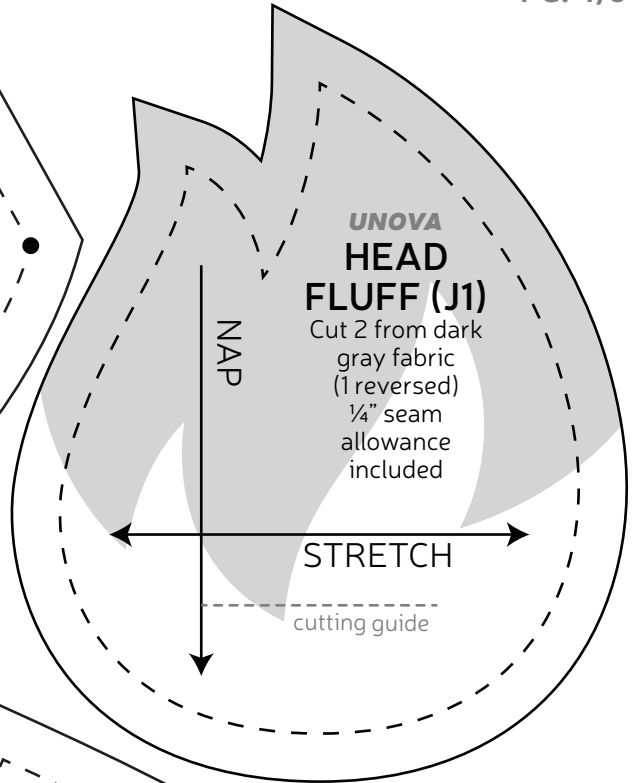
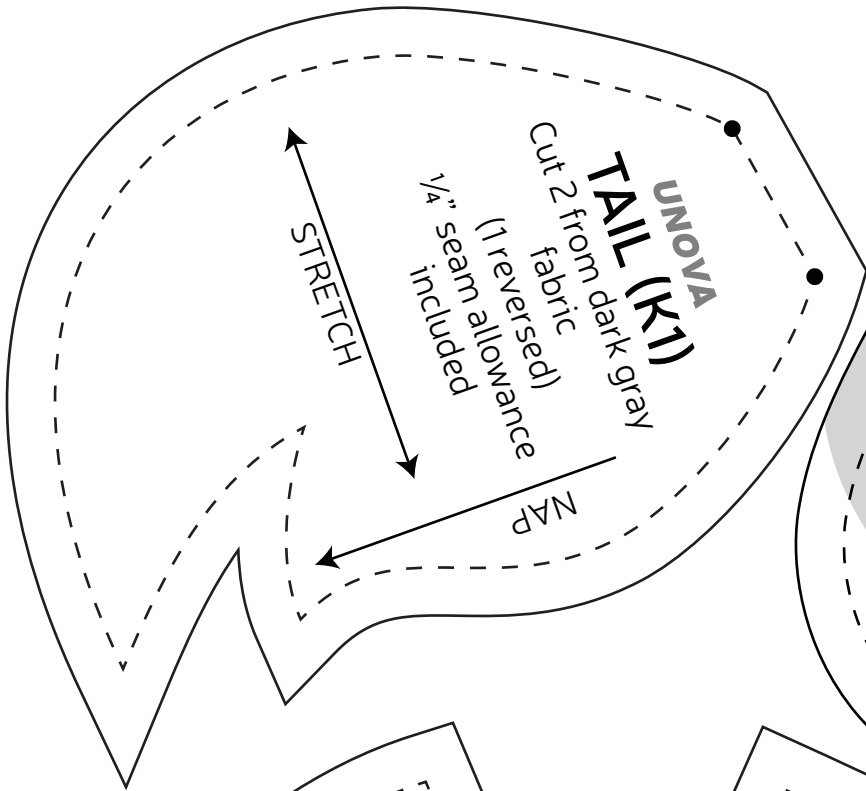
measure this square to  
be sure you've printed  
at the proper  
proportions

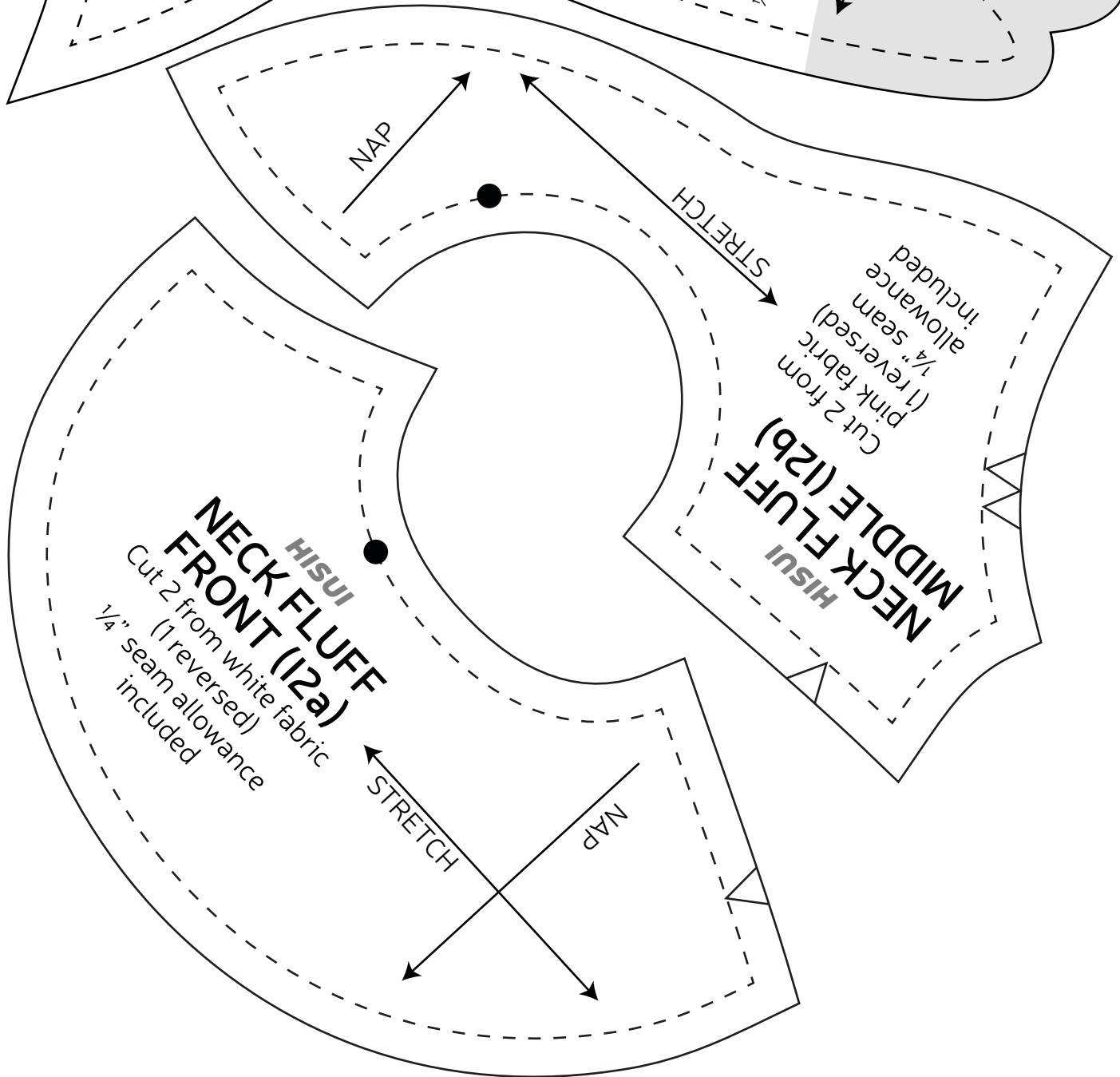
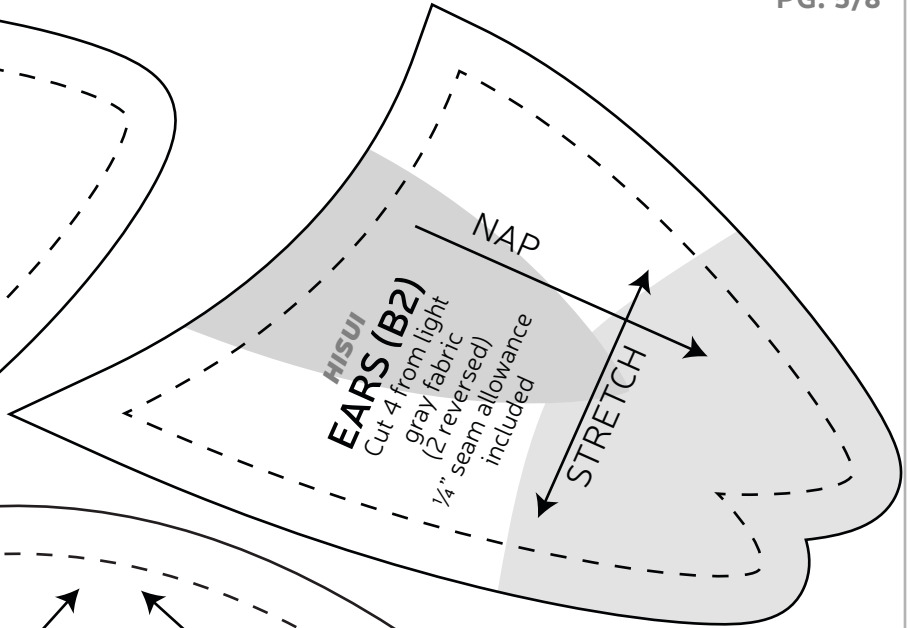
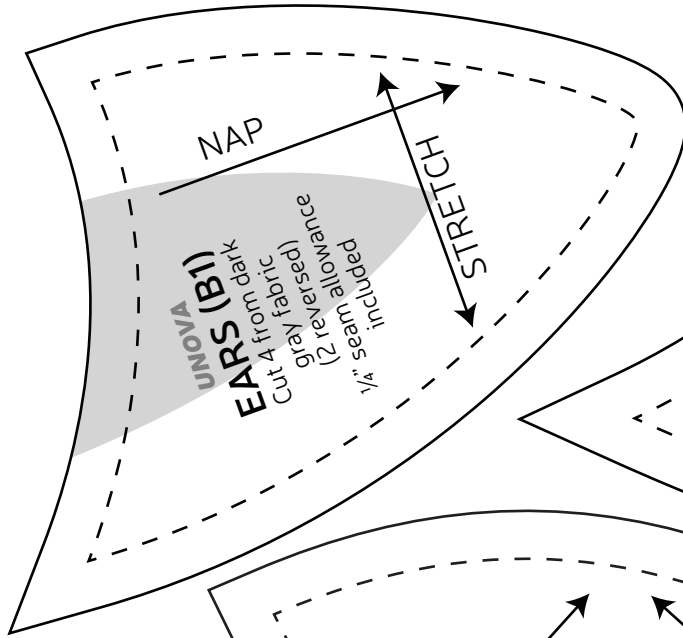


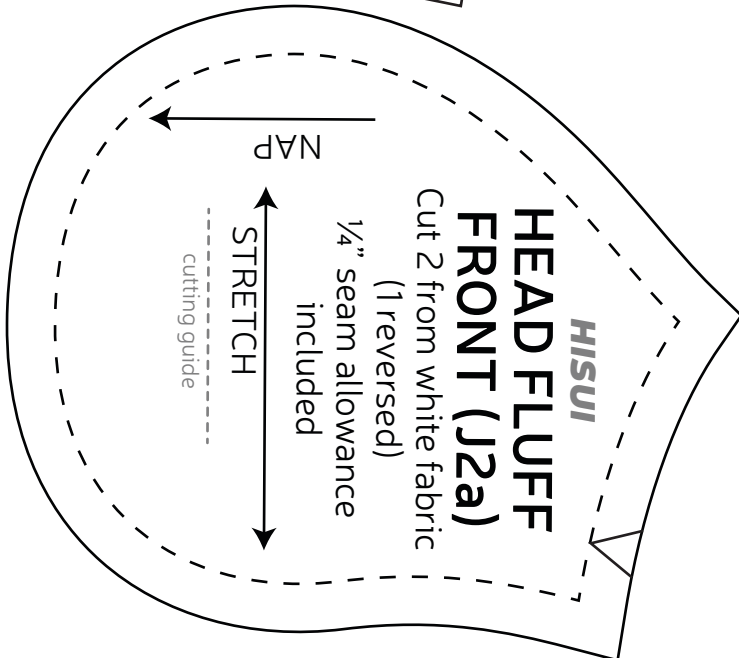
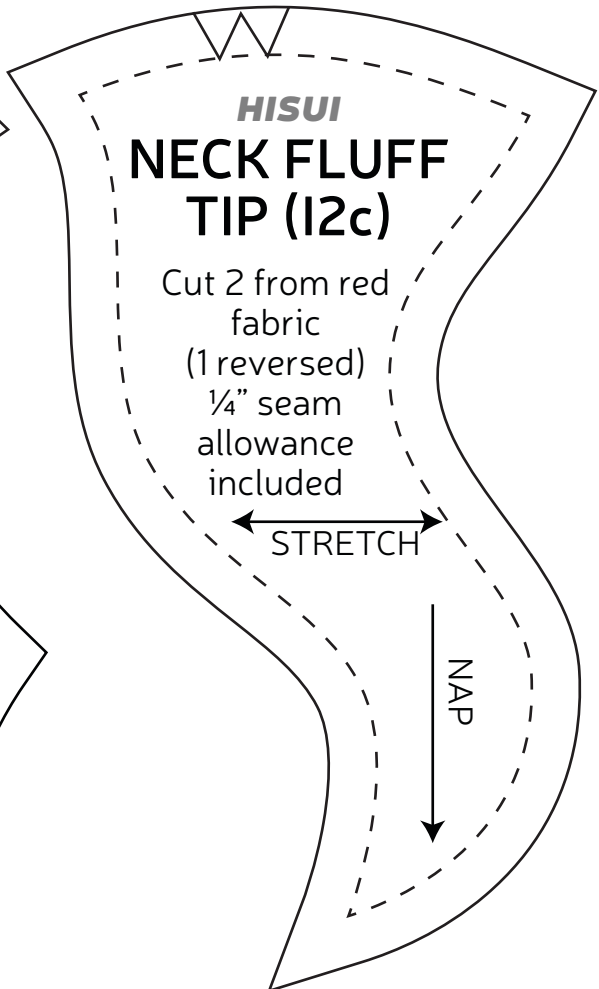
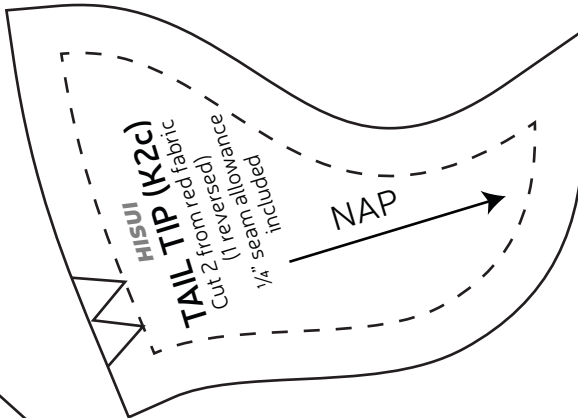
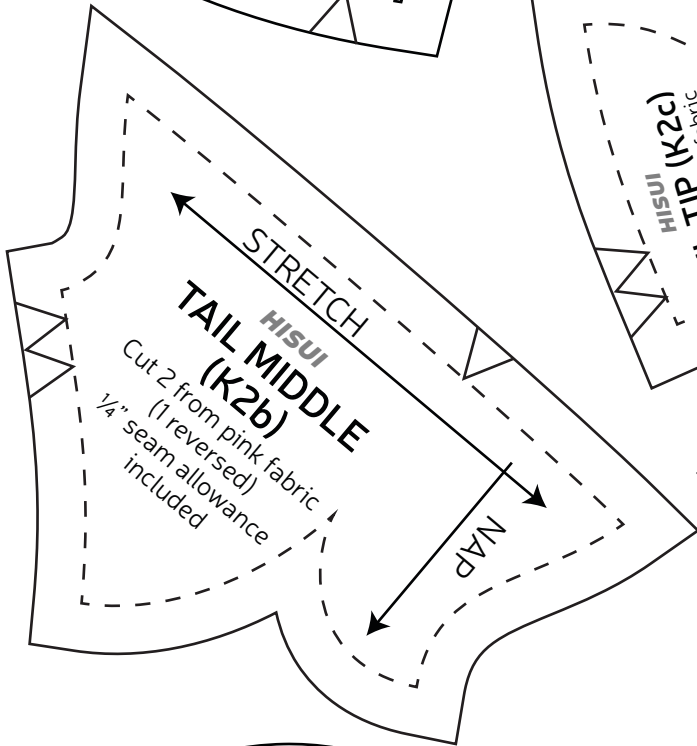
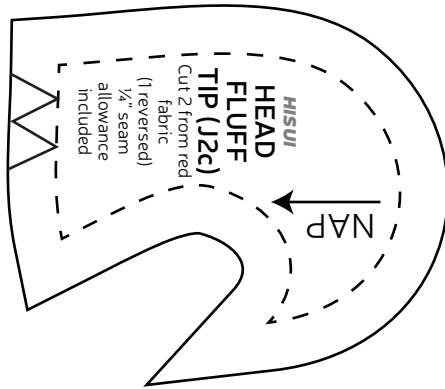
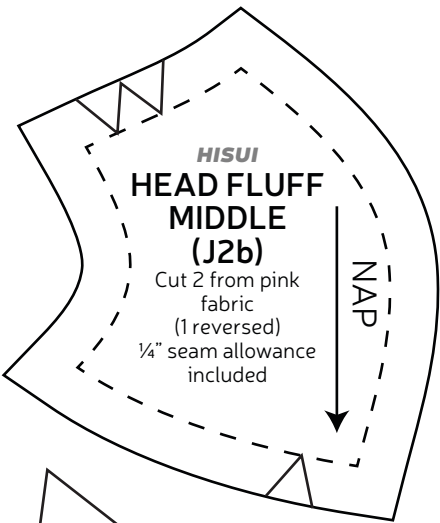




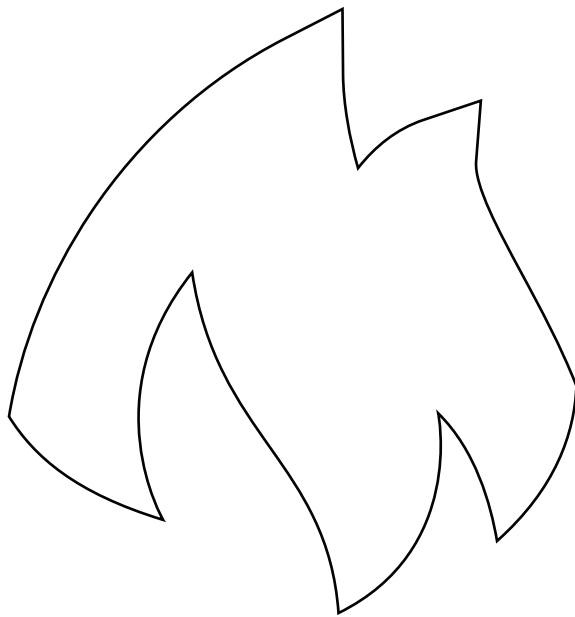




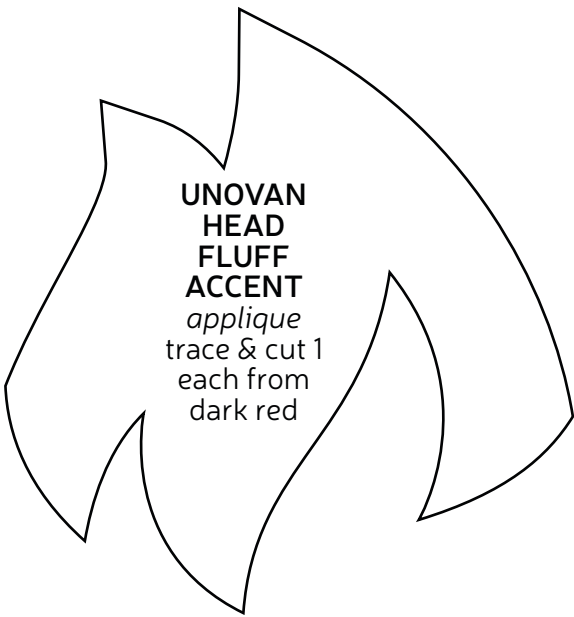




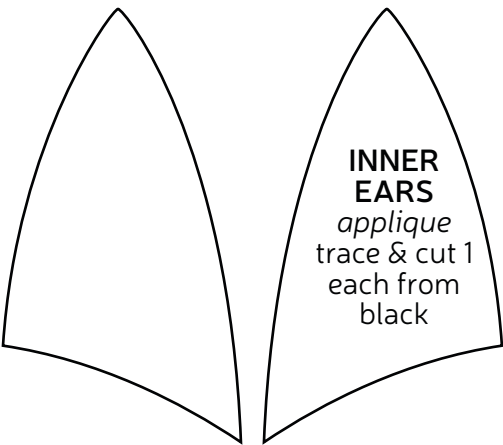




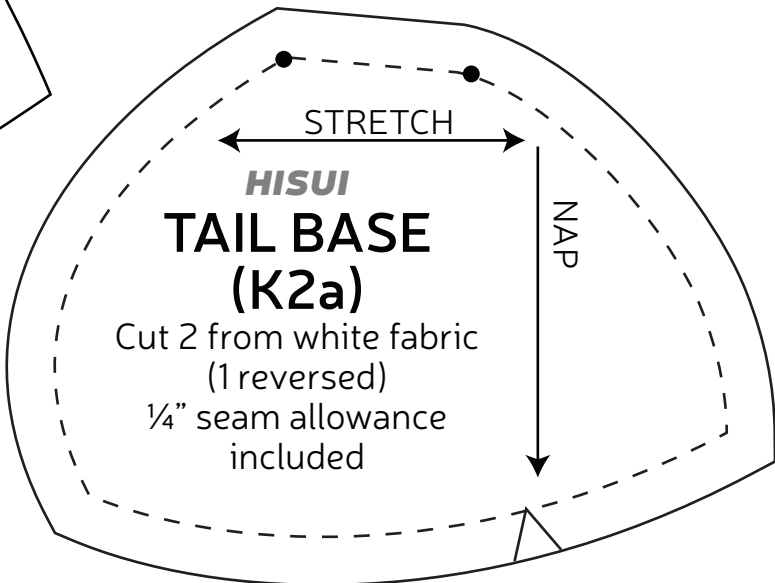
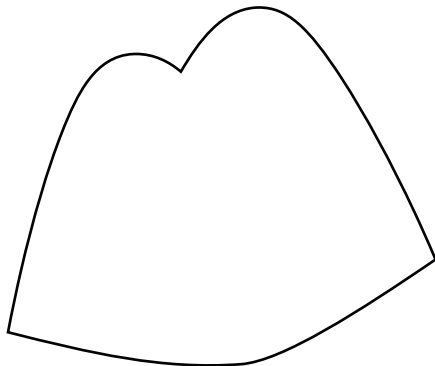
**UNOVAN  
HEAD  
FLUFF  
ACCENT**  
*applique*  
trace & cut 1  
each from  
dark red



**HISUIAN  
EAR TIPS**  
*applique*  
trace & cut 1  
each from  
pink



**INNER  
EARS**  
*applique*  
trace & cut 1  
each from  
black

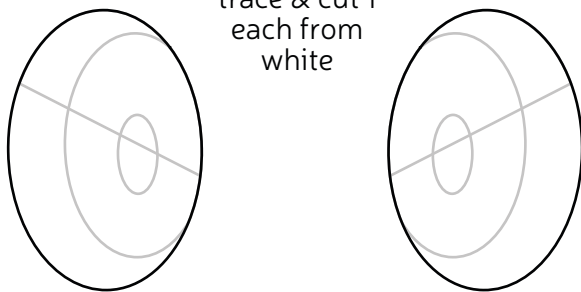


**HISUI  
TAIL BASE  
(K2a)**

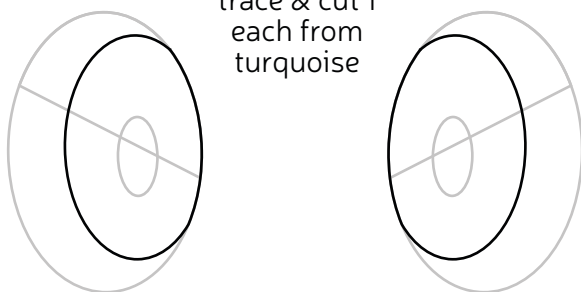
Cut 2 from white fabric  
(1 reversed)  
1/4" seam allowance  
included

**EYE WHITES**

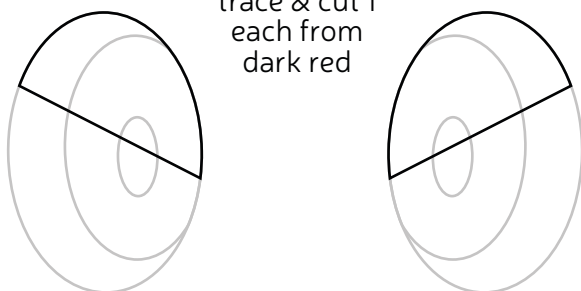
*applique*  
trace & cut 1  
each from  
white

**IRISES**

*applique*  
trace & cut 1  
each from  
turquoise

**EYELIDS**

*applique*  
trace & cut 1  
each from  
dark red

**EYEBROWS**

*applique*  
trace & cut 2  
from dark red

**EYE SHINES**

*applique*  
trace & cut 2  
from white

**NOSE**

*applique*  
trace & cut 1  
from black

**MOUTH LINES**

*applique*  
trace & cut 1 each  
from black

