

SEA BUNNY plush



a free sewing pattern by



SEA BUNNY PLUSH

Sea Bunnies are the affectionate nickname to a species of sea slugs, specifically called *lorunna parva*, a type of nudibranch. They have little accent gills on their head and rear that look just like bunny ears and a tail. This version has those same bunny shaped ears and tail as well as a chubby little body.

But the fantastic part is since sea slugs don't actually have a face, you can skip the facial features for a much easier project!

MAKES:

ONE PLUSH:

About 5" long, 3½" wide, and 3" tall.

SKILLS USED:

- Fusible web applique or using safety eyes
- Curved sewing
- Ladder stitch
- Sewing small pieces
- Matching notches and points
- Basting
- Darts

DIFFICULTY:



The curves and tiny pieces of this plush are likely the trickiest parts. So be sure to pin your pieces carefully before each seam.



sew desu ne?

| WWW.CHOLYKNIGHT.COM |

MATERIALS & TOOLS:

- 1/4 yd. (or 13" x 9") of fabric for main body
- 1/8 yd. of accent fabric for ears and tail
- **FOR APPLIQUE MARKINGS:**
 - 2" x 2" of pink fabric for blush
 - 3" x 3" of black or white fabric for eyes or eye whites
 - 3" x 3" of black or accent fabric for body spots
 - 2' x 3" of white fabric for inner ears
 - 4" x 4" of light or heavy duty fusible web
- **FOR SAFETY EYES:**
 - two 5-12mm wide safety eyes
- sewing thread to match main fabric and applique fabrics
- poly-fil stuffing
- basic sewing tools (sewing machine, scissors, iron, needles, pins, fabric marker, seam ripper)

FUSIBLE WEB:

- Fusible web adhesive is a sheet of adhesive with a paper backing.
Not to be confused with fusible interfacing, which is adhesive attached to a fabric/fiber backing.
- Some common brands are **Pellon** & **HeatnBond**
- In countries outside the US, it may also be known as **bondaweb**
- It comes in **light** and **heavy duty** varieties. Lightweight strength is meant for applique you intend to sew later. Heavy duty versions are for a no-sew bond. If you try to sew them later your machine might have trouble penetrating the glue.



APPLIQUE FABRICS:

- Good applique fabrics include **flannel**, **cotton**, **felt**, **minky**, and **fleece**.
- Flannel and cotton are best for detailed applique with a lot of layers because they're thinner. Meanwhile felt, minky, and fleece are better for simpler applique like body markings.
- **Flannel** is used in the example instructions (page 7).



sew desu ne?

| WWW.CHOLYKNIGHT.COM |

fabric comparison:



SUGGESTED MAIN FABRICS:

MINKY OR FLEECE

Medium weight, plush fabrics with about 20%-30% stretch along the crosswise grain work best for this project. The varieties shown to the left are some good options and names to look for. Try to avoid heavyweight versions of fleece that are intended for outdoor apparel or they may cause trouble for the detailed areas.

You can also use non-stretch fabrics (such as felt), but be aware that the curves will be more difficult to sew and the result will look different. The plush will become more elongated and the edges will look sharper.

10" of minky stretches to 13"
= 30% stretch



MINKY

VS.

FELT



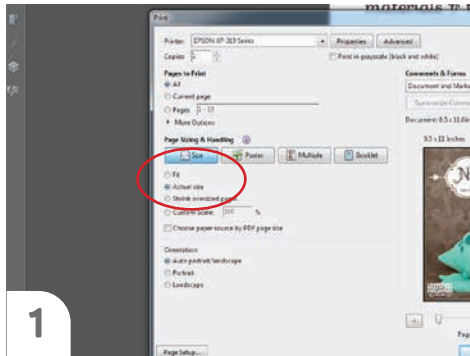
sew desu ne?

| WWW.CHOLYKNIGHT.COM |

PRINTING THE PATTERN:

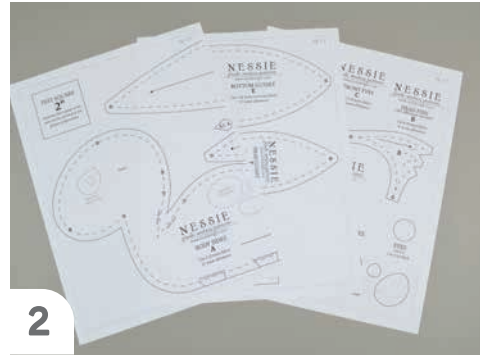
Set your computer to print the template **PAGES 17-18**. If you're unfamiliar with printing and assembling a .pdf pattern, read the steps to follow.

For the best results, use a .pdf reader like **ADOBE READER**. That's what is shown here and will give you the most control over the settings.



1

At the print dialog box, check the box that says print at "Actual Size" or 100%. Any other selection (such as "Fit to page") will distort the pattern so it's slightly larger or smaller and we don't want that.



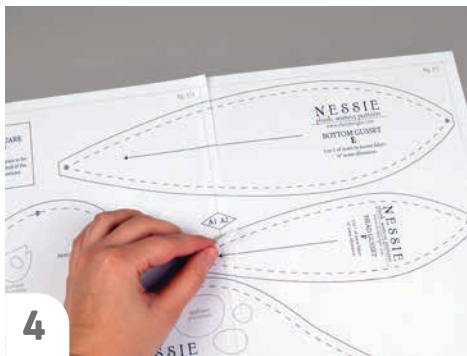
2

Print the pages needed for the file. You might have one or more. Either way, be sure you have the full collection by noting the page numbers in the corner.



3

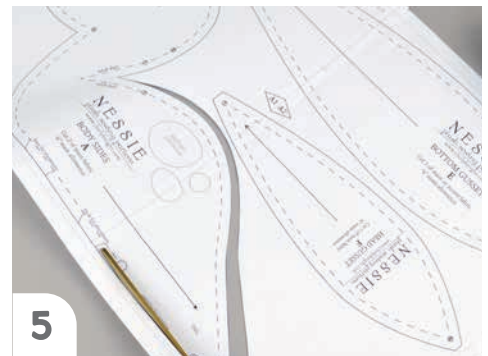
It's likely your printer will have a margin that ensures your image doesn't print to the very edge. Assembly will be easier if you trim off this blank margin edge. This will give you pages that overlap slightly during assembly. If you trim across the gray outline boxes, this will give you pages that don't overlap but rather butt against each other.



4

To line up the pattern pages, match up the corresponding diamond shapes. Each diamond will have a letter, so it's simply a matter of matching A1 to A2, B3 to B4 and so on. The faint gray lines indicate the border of every page, you should be able to line those up as well. When the diamond goes together, tape it in place.

If you have many pages, it's easier to tape up the pages into rows first. Then tape the rows together into a full block.



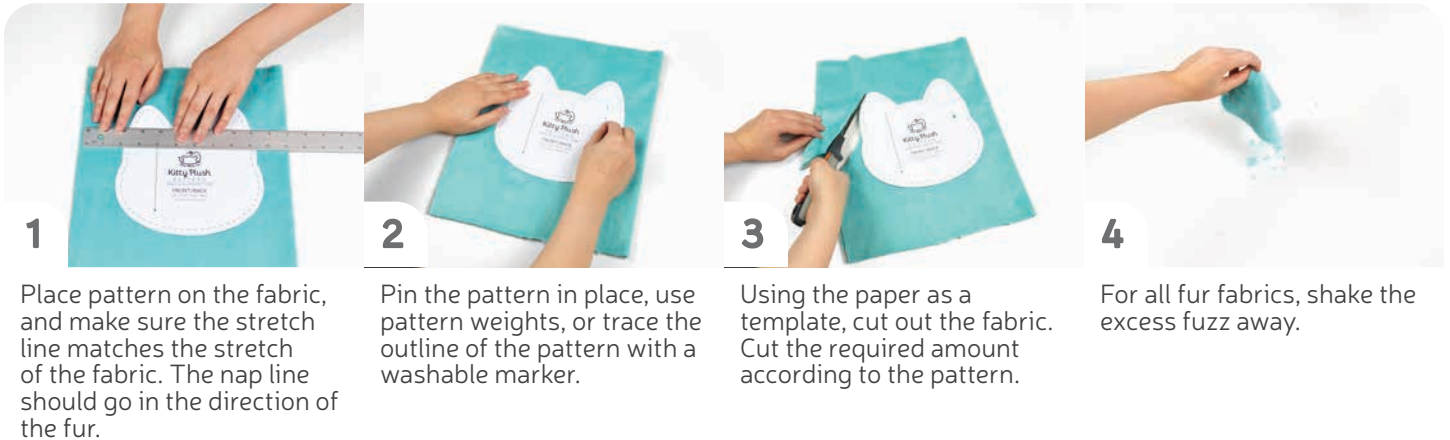
5

You can trace the patterns onto a different paper, or you can also just cut them straight from the printer paper -- be sure that each piece is fully taped together along the joins so they don't fall apart when you cut them.

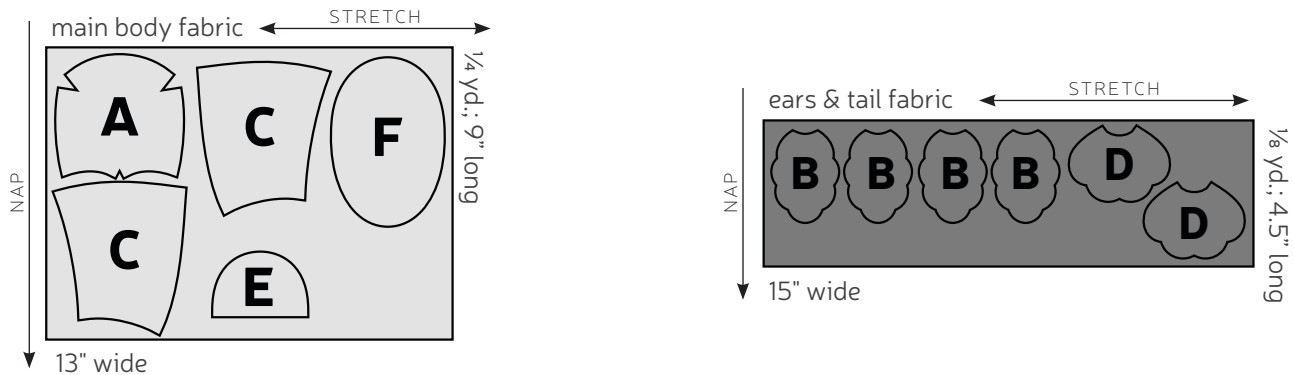
sew desu ne?

| WWW.CHOLYKNIGHT.COM |

CUTTING THE FABRIC:



CUTTING LAYOUT:



BEFORE YOU BEGIN:

- Briefly read the project instructions so you know what to expect.
- If desired, mark the cut fabric pieces with the markings and symbols from the pattern. Or wait until the applicable step before transferring.
- Note that a 1/4" seam allowance is used throughout the project, which is included in the pattern templates.

sew desu ne?

| WWW.CHOLYKNIGHT.COM |

1. DECIDE ON THE FACE



- The next step depends on what kind of face you want for your plush.
- a. Technically, sea bunnies don't have faces so you can skip the face altogether and still have a very cute plush. Skip ahead to step 6 to continue with the rest of the construction.
- b. Or for some simpler eyes, you can use **safety eyes**. Those are added later in the construction, so don't worry about them for now. Continue at step 6 and make your plush with a blank face for now.
- c. For an appliqued face, continue below with step 2.

2. PREP THE FACE APPLIQUE



- a. Grab your fusible web and applique templates. You have the option of doing the **SIMPLE** eyes or **WIDE** eyes. Here we're doing the **SIMPLE** eyes. You should have:
 - **eyes** (2, black)
 - **mouth** (1, black)
 - **blush** (2, pink)
- b. Fuse the bumpy (adhesive) side of the fusible web onto the applique fabrics.
- c. Cut out your applique pieces and grab your **FACE** piece (A). Set your paper pattern on top of the face piece. Align the applique piece on top where the placement markings are. Next, carefully pull the paper pattern away while holding the applique piece in place.

sew desu ne?

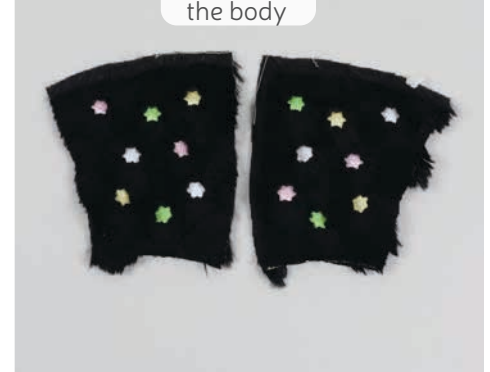
| WWW.CHOLYKNIGHT.COM |

3. FUSE THE FACE APPLIQUE

- a. Tuck your **blush** pieces underneath the **eye** pieces. Fuse the applique pieces with your iron. Use a press cloth, such as a scrap piece of cotton. This will help protect any polyester or fuzzy fabrics from melting or scorching.
- b. Add the **mouth** pieces next. Use the paper pattern and photos as a placement guide. Lastly add any **spots** or **stars** if you want them.



4. FUSE THE OTHER BODY PIECES



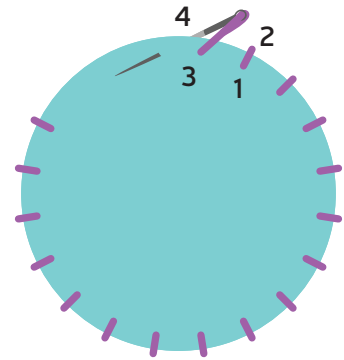
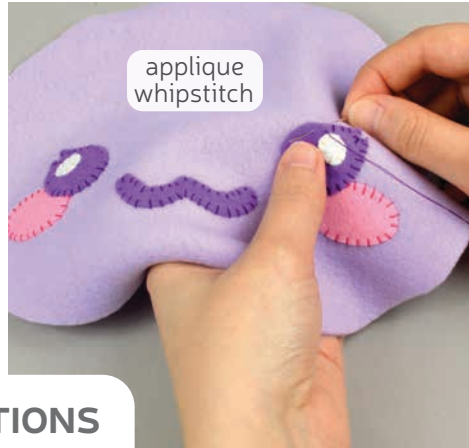
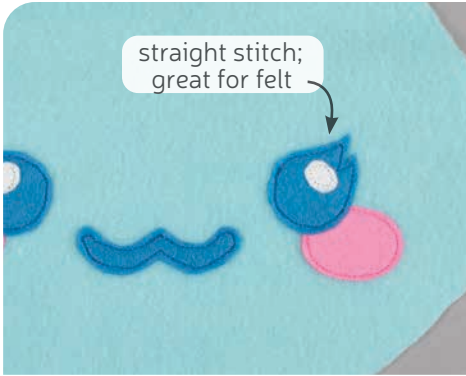
- Take this time to also add the applique to the other body pieces.
- a. The **EARS** (B) can get **inner ear** pieces if you want them. You can fuse these to 2 of the ears (for single-sided ears) or all 4 ear pieces (for double-sided ears).
 - b. The **BODY** pieces (C) can get **spots** or **stars**. Add them to both of the body pieces.

If you used heavy duty fusible web, you can keep the pieces fused without sewing, or you can sew them in place a number of ways. I've used a zigzag stitch here.

→ *Refer to the next step for some other applique options.*

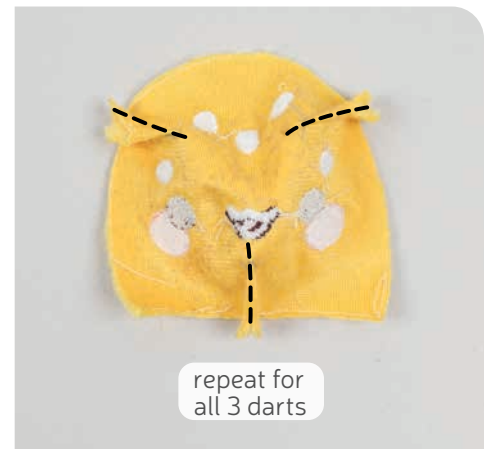
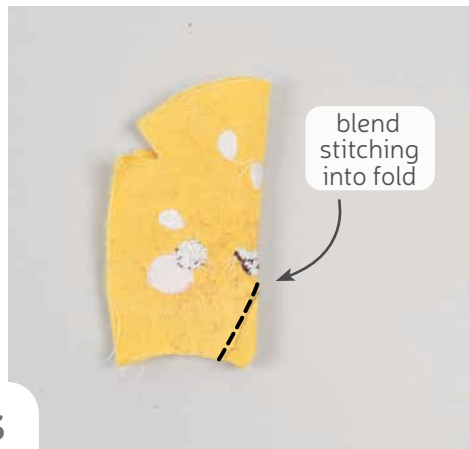
sew desu ne?

| WWW.CHOLYKNIGHT.COM |



5. OTHER APPLIQUE OPTIONS

- Other good options for applique include a straight stitch, which involves sewing around the edge of the applique pieces with a straight stitch using matching thread -- about 1/8" in from the edge.
- You can also applique by hand; I prefer a whipstitch. Thread a hand-sewing needle with some matching thread and knot it. Bring the thread up from the back of the project; about 1/8" in from the edge of the applique shape. Bring it down perpendicular from the curve, just outside of the applique shape. This completes one stitch.
- For the next stitch, bring the needle back up about 1/8" away from the previous stitch and 1/8" in from the edge just as in the first stitch. Once again, bring it down just outside the applique shape. Continue this way until you've sewn around the shape.



6. SEW THE FACE DARTS

- Grab your **FACE** piece (A). This piece has **darts** all along the top and bottom. These are the small wedge shapes found labeled on the paper pattern. To sew them, start by folding the fabric along the point of the **dart** so the slanted edges match up. Make sure right sides are facing and pin the fabrics together.
- Sew from the opening of the **dart** into the fold of the fabric. Try to blend your stitching into the fold for a smooth transition and a rounder finish to the plush.
- Repeat this with all the **darts** on the face piece. There is one along the bottom and two along the top. There should be three **darts** total.

DARTS:

A wedge-shaped gap found in a pattern. When sewn in fabric, it creates a tuck in the fabric and develops a 3D shape. The diagonal sides of the wedge are the **LEGS**; these are matched up and sewn to the **POINT** of the dart.

sew desu ne?

| WWW.CHOLYKNIGHT.COM |

7. SEW THE EARS



- Grab your **EAR** pieces (B). Take two of them and align them with right sides facing and the raw edges matching up. For **1-SIDED EARS** make sure you grab one ear with applique and one without.
- Sew the pieces together along the curved edges. Leave the short edge along the bottom open for turning the piece right side out later.
- Trim the excess seam allowance around the tight corners and curves. This will reduce bulk and increase flexibility in those areas so the piece turns more cleanly.
- Turn the ears right side out through the opening along the bottom. Repeat this with your remaining ear pieces so you have two completed ears total.



BASTING:

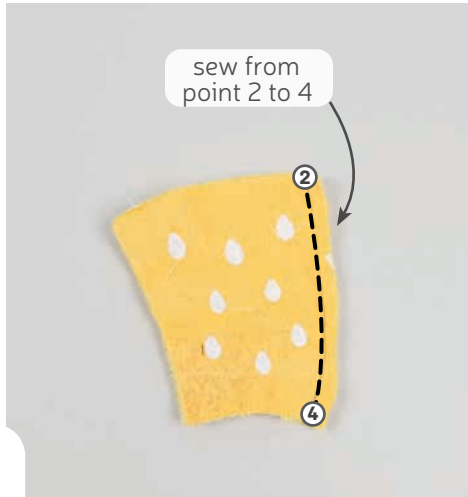
A form of temporary sewing meant to hold pieces in place. A long stitch length is often used for this reason. The finished result is not meant to be seen and sometimes is even removed later (depending on your project).

8. BASTE THE EARS

- Grab your **FACE** piece so far (A). If you haven't already, note the **ear placement lines** found on the paper pattern for the face. Transfer these lines onto the right side of your fabric. Take your ears and align them within these **placement lines**. If you have **inner ear** applique, make sure its facing up.
- Now take your ears and flip them down so they're pointing toward the middle of the face. The raw edges of the ears and face should be flush. Pin the ears in place and baste them to the face within the seam allowance to hold them in place for future steps.

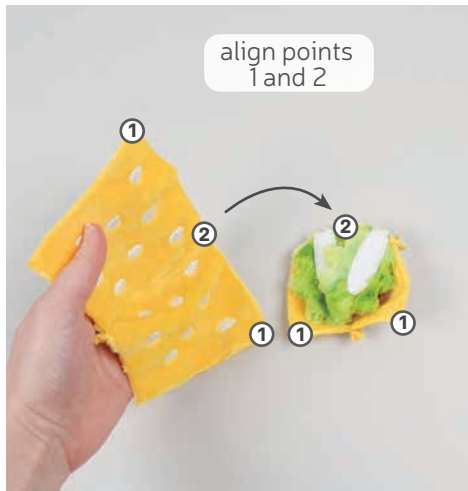
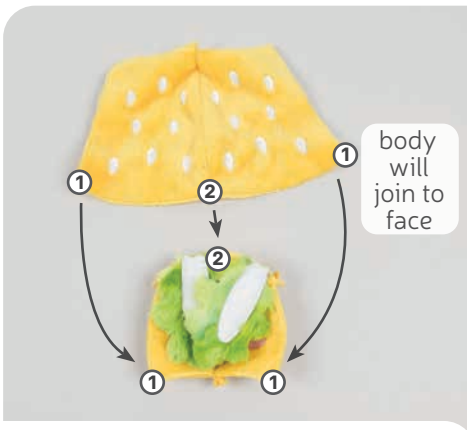
sew desu ne?

| WWW.CHOLYKNIGHT.COM |



9. SEW THE BODY BACK

- Grab your **BODY** pieces (C). Align them with right sides facing and the raw edges matching up. Pin the pieces together along the center back edge. You can refer to the **numbered markings** on the paper pattern for help. Line up the edge from **points 2 to 4**.
- Sew the body pieces together from **point 2 to 4**.
- Open up the pieces when complete.



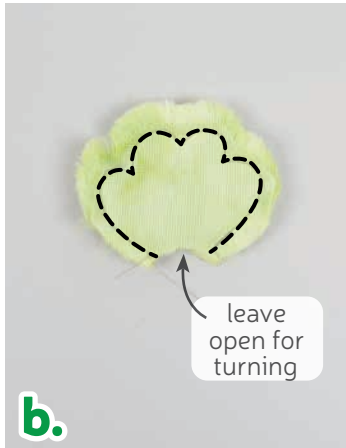
10. ATTACH THE FACE

- Grab your **FACE** so far (A) as well as the **BODY** (C). The body will join to the face all around the outer curve. But you can also look for the **numbered markings** for help with alignment. Look for **points 1 and 2**.
- Grab your body piece and flip it over so now it's right sides facing with the face. Line up **point 2** at the center top and **point 1** at each corner. Pin the body to the face around the curve from **point 1 to 2** and then to the other **point 1**. Make sure the **EARS** are tucked inside.
- Sew the body to the face from **point 1 to 1** with **point 2** in the middle. This should also sew over the ears and secure them into the seam.

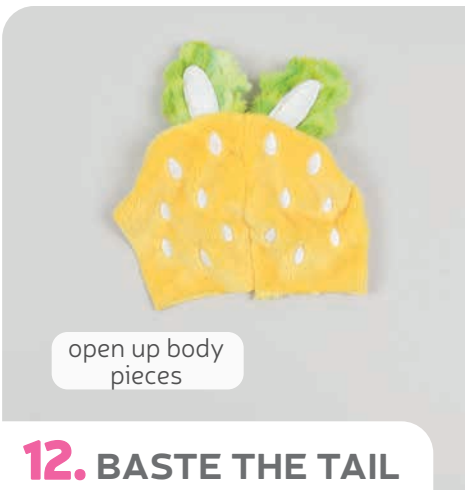
sew desu ne?

| WWW.CHOLYKNIGHT.COM |

11. SEW THE TAIL



- Grab your **TAIL** pieces (D). Align them with right sides facing and the raw edges matching up.
- Sew the pieces together along the long curved edges. Leave the short inner curve at the bottom open for turning the piece right side out later.
- Trim the excess seam allowance around the curves of the tail to reduce bulk and so the piece turns more cleanly.
- Turn the tail right side out through the opening.

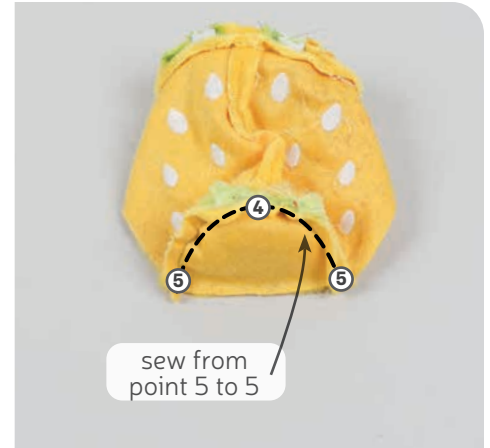
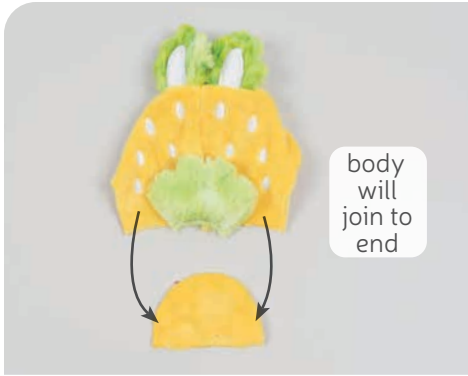


12. BASTE THE TAIL

- Grab your body piece so far. If you haven't already, note the **tail placement markings** found on the paper pattern for the **BODY** (C). Transfer these markings to the right side of the fabric. We'll use this to align the tail next.
- Grab your sewn **TAIL** (D) and align it over the body within the **placement markings**. The raw edges of the tail and body should be flush. Pin the tail to the body.
- Baste the tail to the body within the seam allowance to hold it in place for future steps.

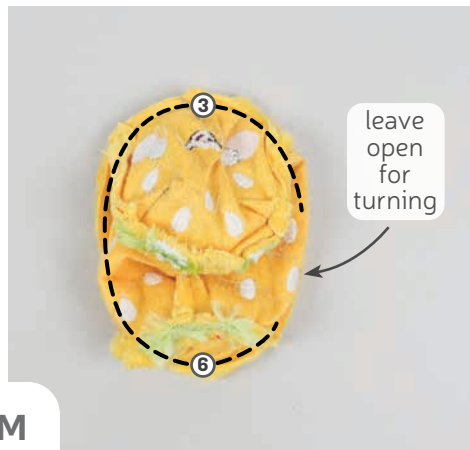
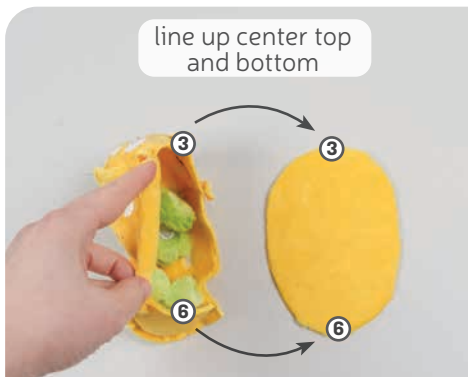
sew desu ne?

| WWW.CHOLYKNIGHT.COM |



13. ATTACH THE BACK END

- Grab your **BODY** so far as well as the **END** piece (E). The body will join to the end all around the outer curve. But you can also look for the **numbered markings** for help with alignment. Look for **points 4 and 5**.
- Grab your body piece and flip it over so now it's right sides facing with the end. Line up **point 5** at the center top and **point 4** at each corner. Pin the body to the end around the curve from **point 5 to 4** and then to the other **point 5**. Make sure the **TAIL** is tucked inside.
- Sew the body to the end from **point 5 to 5** with **point 4** in the middle. This should also sew over the tail and secure it into the seam.



14. ATTACH THE BOTTOM

- Grab your **BOTTOM** piece (F). The bottom piece will join to the open edge of the body all the way around. But you can also look for the **numbered points** to help with alignment. **Point 3** will match up at the center top and **point 6** will match up at the center bottom. Align the body all the way around the bottom piece so right sides are facing and **points 3 and 6** match up.
- If you haven't already, note the **opening for turning markings** found on the paper pattern for the **BOTTOM** (F). Transfer these markings onto your fabric so you have a small **opening for turning** on the side. Sew the body to the bottom all the way around, but skip over the **opening for turning** that you marked.
- Turn the body right side out through the **opening for turning** for the completed body.

sew desu ne?

| WWW.CHOLYKNIGHT.COM |

For SAFETY EYES: continue below with step 15.
For all other versions: skip ahead to step 17.

15. CREATE THE SAFETY EYE HOLES



- a.** If you're using **SAFETY EYES**, we're going to install them now. To get the right placement, it helps to stuff the plush first so you know exactly where the eyes will end up. We'll then have to unstuff the plush to install the eyes and re-stuff the plush again. Start by stuffing your plush firmly in the face. You can leave the rest of the plush very lightly stuffed since it doesn't need it yet.
- b.** Mark where you'd like the eyes to go. You can use the **aplique placement guide** on the paper pattern as a good place to start.
- c.** You can test the eyes a bit by holding them over the markings to make sure you like the placement. Once you're sure, you can move ahead to cutting the holes for the eyes.
- d.** Create the eye holes at the points where you marked. An awl is considered the proper tool to use, but you can also use some small sharp scissors. You can test the eyes again at this point as well. If you're not happy with the placement, you can stitch the cuts closed and try cutting again. If the new cut is very close to the old cut, the safety eye may cover up the old cut. That way the mistake will be less noticeable. Take all the stuffing out of the plush, then move onto the next step.



sew desu ne?

| WWW.CHOLYKNIGHT.COM |

16. SECURE THE SAFETY EYES

- Take your **safety eyes** and insert them into the newly unstuffed plush. Push the post end of the eye into the hole you've cut.
- Push the post through the fabric so it reaches the inside of the plush.
- Grab your **base** piece for the safety eye and align it over the **post**.
- Push the **base** down over the **post**. It should go over the bumps of the post and make a click to hold it securely. You may need to push it down hard so the **base** doesn't move. Repeat this for the other eye. When complete you can now turn the plush right side out to stuff it for real.



17. STUFF THE PLUSH

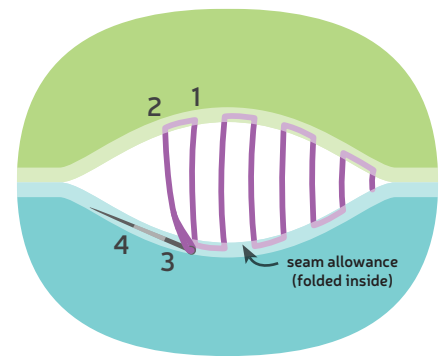
- Begin stuffing the plush. Be sure to get plenty in the chin and face area near the darts so there are no wrinkles near the seams.
- Keep stuffing the plush in this manner until it's completely full.



sew desu ne?

| WWW.CHOLYKNIGHT.COM |

18. SEW THE PLUSH CLOSED



- a.** Once the plush is stuffed, make sure the seam allowances in the opening are tucked inside and prepare to ladder stitch it closed. Thread a hand-sewing needle and knot it at the end. Insert the needle from the inside of the opening and out of the plush near one edge of the opening. This will leave the knot inside the plush.
- b.** Ladder stitch the body closed. Take a 1/8" stitch into the fold of one side of the opening, then go across and take another. Keep going down the opening until you reach the end.
- c.** When you're finished, stitch a knot into the end of the seam. Then insert the needle near the finished knot. Bring the needle out about 1-2" away and pull it through.
- d.** Pull the thread taut while snipping the thread. The excess thread should sink back inside the plush -- all hidden!

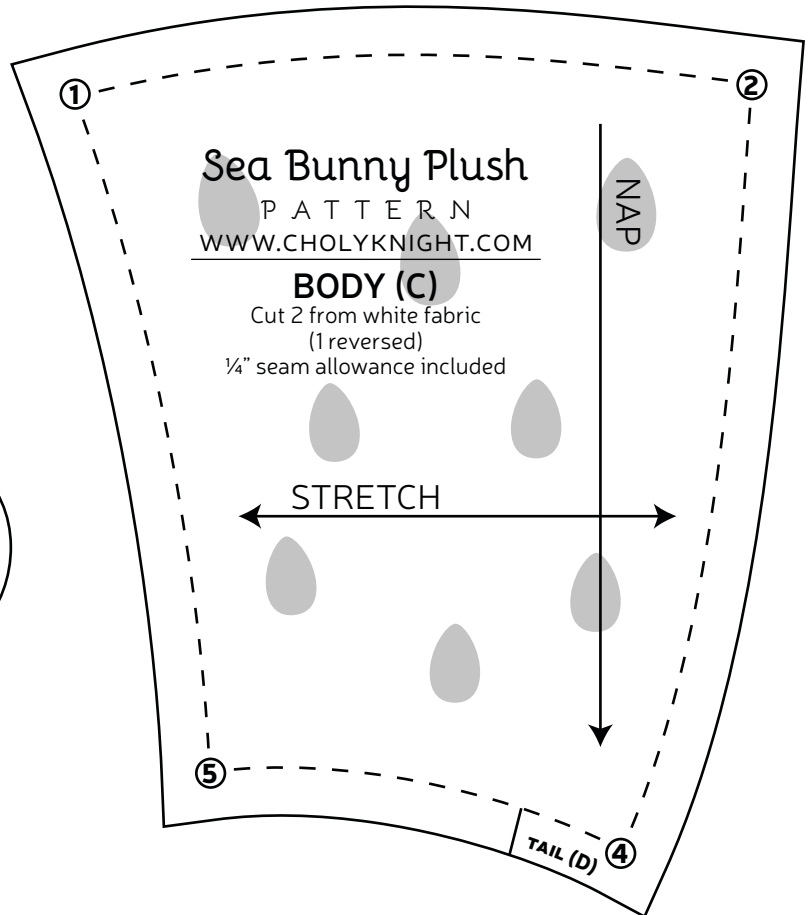
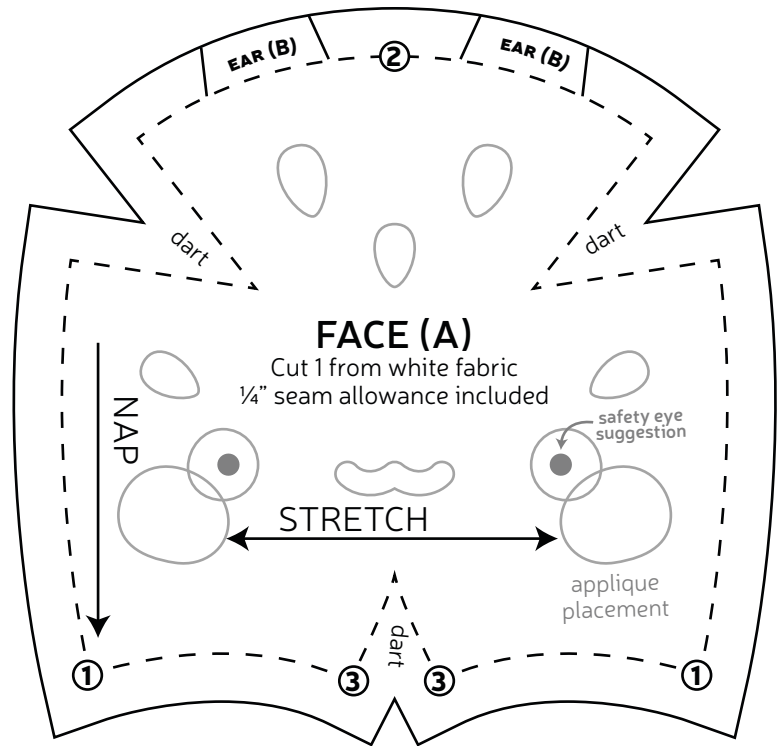
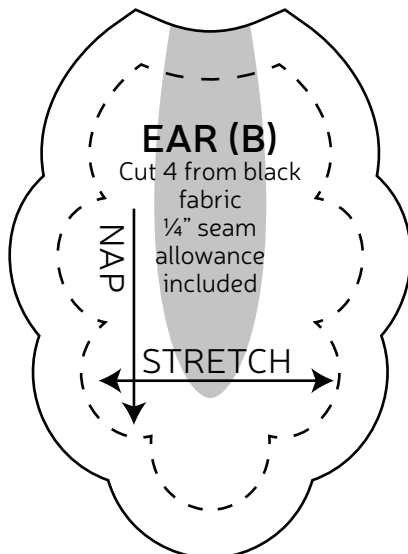
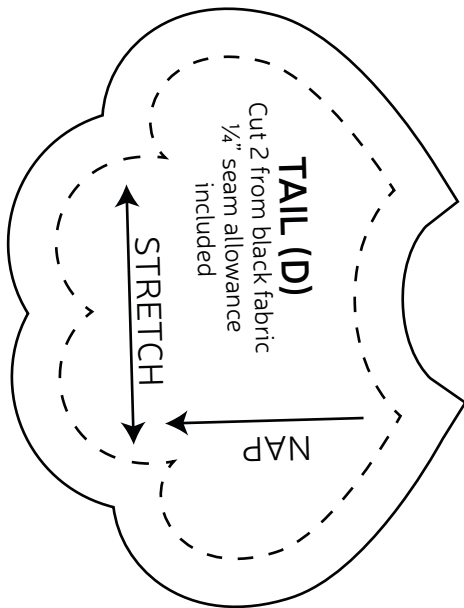


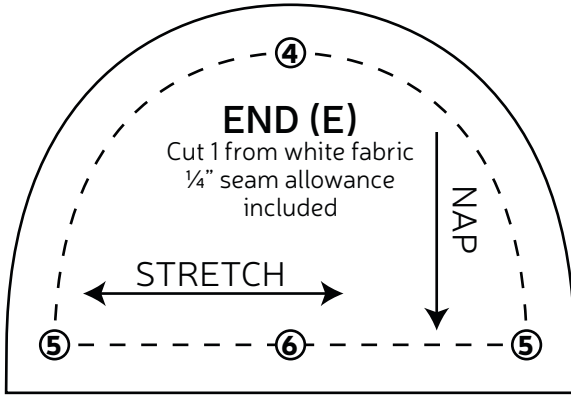
sew desu ne?

| WWW.CHOLYKNIGHT.COM |

TEST SQUARE 2"

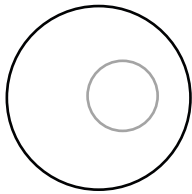
measure this square to
be sure you've printed
at the proper
proportions





WIDE EYES

EYE WHITE
aplique
trace & cut 2
from white



PUPIL
aplique
trace & cut 2
from black



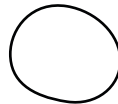
SIMPLE EYES



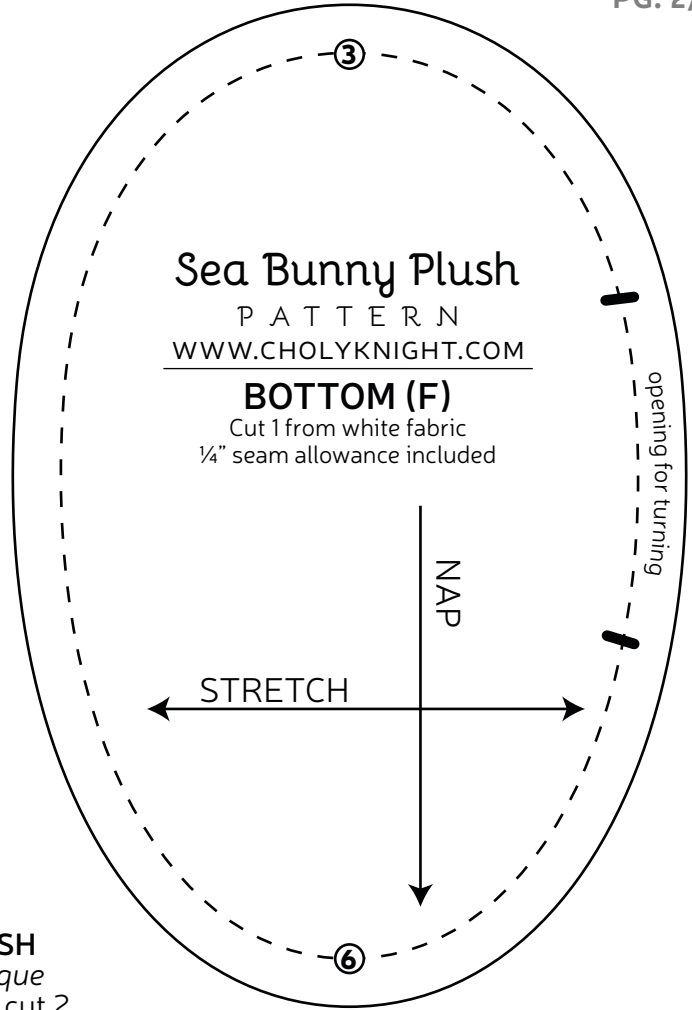
PUPIL
aplique
trace & cut 2
from black



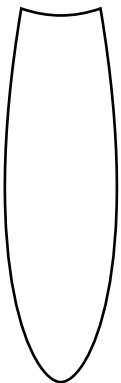
BLUSH
aplique
trace & cut 2
from pink



OPEN SMILE



INNER EAR
aplique
trace & cut 4
from white



BUNNY MUZZLE
aplique
trace & cut 1
from black



CUTE SMILE
aplique
trace & cut 1
from black



OPEN SMILE
aplique
trace & cut 1
from black



MOUTH
aplique
trace & cut 1
from pink



SPOTS
aplique

trace & cut
6 from
black



trace & cut
12 from
black



trace & cut
3 from
black



STARS
aplique
trace & cut 4 each
from white, yellow,
pink, and green

