

CINNAMOROLL PLUSH



a free sewing pattern by



CINNAMOROLL PLUSH

Currently one of Sanrio's highest ranked characters, Cinnamoroll was introduced in 2001. He's an adorable white puppy with long ears that allow him to fly. He also has a curled white tail that looks like a cinnamon roll, giving him his name.

This version has the same tiny body, stumpy arms and legs, long puffy ears, curled tail, and sweet smile. It comes in two sizes, both a basic medium-sized version and an extra-large jumbo version for more cuddles!

SKILLS USED:

- Fusible web applique
- Curved sewing
- Ladder stitch
- Sewing small pieces
- Matching notches and points
- Basting
- Darts

DIFFICULTY:



The main body and head of the plush are fairly straightforward, but the large ears and curly tail might be a little tricky. Take your time to align the pieces carefully when you get to those parts.

MAKES:

MEDIUM SIZE:

About 8" tall from bottom of body to top of head. It's 6" wide from each side of head (or about 15" if you include ears). And it's 5" long from front of face to back of body.

JUMBO SIZE:

About 15" tall from bottom of body to top of head. It's 11" wide from each side of head (or about 24" if you include ears). And it's 10" long from front of face to back of body.



sew desu ne?

| WWW.CHOLYKNIGHT.COM |

MATERIALS & TOOLS:

- **FOR MEDIUM SIZE:**
 - 1/3 yd. of white fabric for main body
 - 9" x 5" of scrap fabric for poly pellet pouch
 - 3" x 3" of blue applique fabric for eyes and mouth
 - 2" x 2" of pink applique fabric for blush
 - 5" x 5" of light or heavy duty fusible web
 - **OPTIONAL DETAILED EYES:**
 - 2" x 2" of light blue applique fabric for eye highlights
 - 2" x 2" of white applique fabric for eye shines
- **FOR JUMBO SIZE:**
 - 1 yd. of white fabric for main body
 - 14" x 7" of scrap fabric for poly pellet pouch
 - 5" x 5" of blue applique fabric for eyes and mouth
 - 3" x 3" of pink applique fabric for blush
 - 6" x 6" of light or heavy duty fusible web
 - **OPTIONAL DETAILED EYES:**
 - 3" x 3" of light blue applique fabric for eye highlights
 - 3" x 3" of white applique fabric for eye shines
- **FOR BOTH VERSIONS:**
 - sewing thread to match main fabric and applique fabrics
 - poly-fil stuffing
 - basic sewing tools (sewing machine, scissors, iron, needles, pins, fabric marker, seam ripper)
 - poly pellets
 - funnel or spoon for filling poly pellets

APPLIQUE FABRICS:

- Good applique fabrics include **flannel, cotton, felt, minky,** and **fleece.**
- Flannel and cotton are best for detailed applique with a lot of layers because they're thinner. Meanwhile felt, minky, and fleece are better for simpler applique like body markings.
- **Flannel** is used in the example instructions (page 8).



FUSIBLE WEB:

- Fusible web adhesive is a sheet of adhesive with a paper backing.
- **Not to be confused with fusible interfacing**, which is adhesive attached to a fabric/fiber backing.
- Some common brands are **Pellon & HeatnBond**
- In countries outside the US, it may also be known as **bondaweb**
- It comes in **light** and **heavy duty** varieties. Lightweight strength is meant for applique you intend to sew later. Heavy duty versions are for a no-sew bond. If you try to sew them later your machine might have trouble penetrating the glue.



sew desu ne?

| WWW.CHOLYKNIGHT.COM |

fabric comparison:



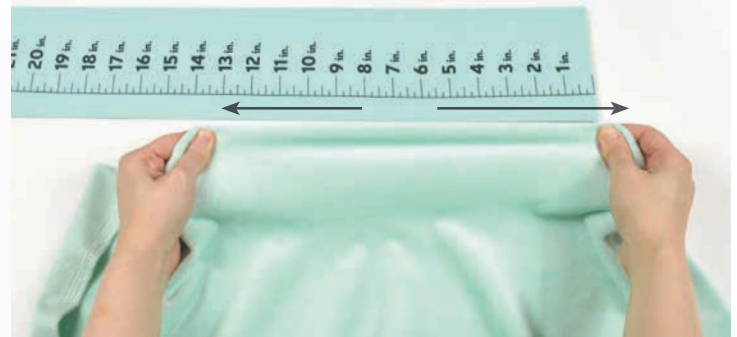
SUGGESTED MAIN FABRICS:

MINKY OR FLEECE

Medium weight, plush fabrics with about 20%-30% stretch along the crosswise grain work best for this project. The varieties shown to the left are some good options and names to look for. Try to avoid heavyweight versions of fleece that are intended for outdoor apparel or they may cause trouble for the detailed areas.

You can also use non-stretch fabrics (such as felt), but be aware that the curves will be more difficult to sew and the result will look different. The plush will become more elongated and the edges will look sharper.

10" of minky
stretches to 13"
= 30% stretch



MINKY

VS.

FELT



sew desu ne?

| WWW.CHOLYKNIGHT.COM |

PRINTING THE PATTERN:

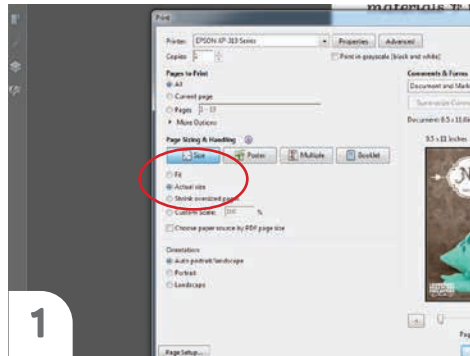
Set your computer to print the template pages:

MEDIUM SIZE: PAGES 25-30

JUMBO SIZE: PAGES 31-45

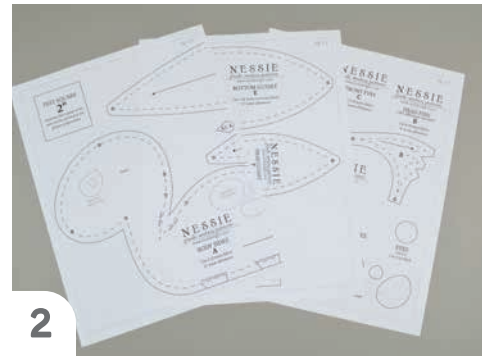
If you're unfamiliar with printing and assembling a .pdf pattern, read the steps to follow.

For the best results, use a .pdf reader like **ADOBE READER**. That's what is shown here and will give you the most control over the settings.



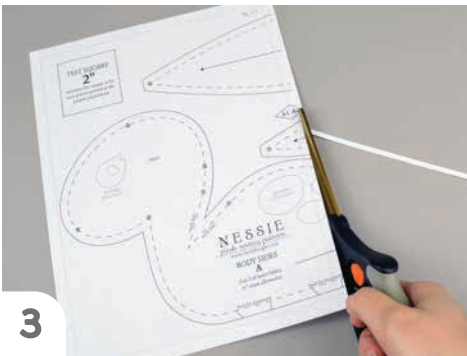
1

At the print dialog box, check the box that says print at "Actual Size" or 100%. Any other selection (such as "Fit to page") will distort the pattern so it's slightly larger or smaller and we don't want that.



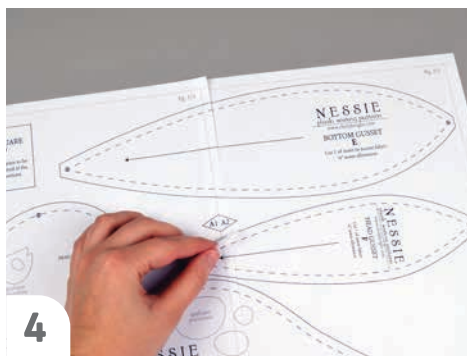
2

Print the pages needed for the file. You might have one or more. Either way, be sure you have the full collection by noting the page numbers in the corner.



3

It's likely your printer will have a margin that ensures your image doesn't print to the very edge. Assembly will be easier if you trim off this blank margin edge. This will give you pages that overlap slightly during assembly. If you trim across the gray outline boxes, this will give you pages that don't overlap but rather butt against each other.



4

To line up the pattern pages, match up the corresponding diamond shapes. Each diamond will have a letter, so it's simply a matter of matching A1 to A2, B3 to B4 and so on. The faint gray lines indicate the border of every page, you should be able to line those up as well. When the diamond goes together, tape it in place.

If you have many pages, it's easier to tape up the pages into rows first. Then tape the rows together into a full block.



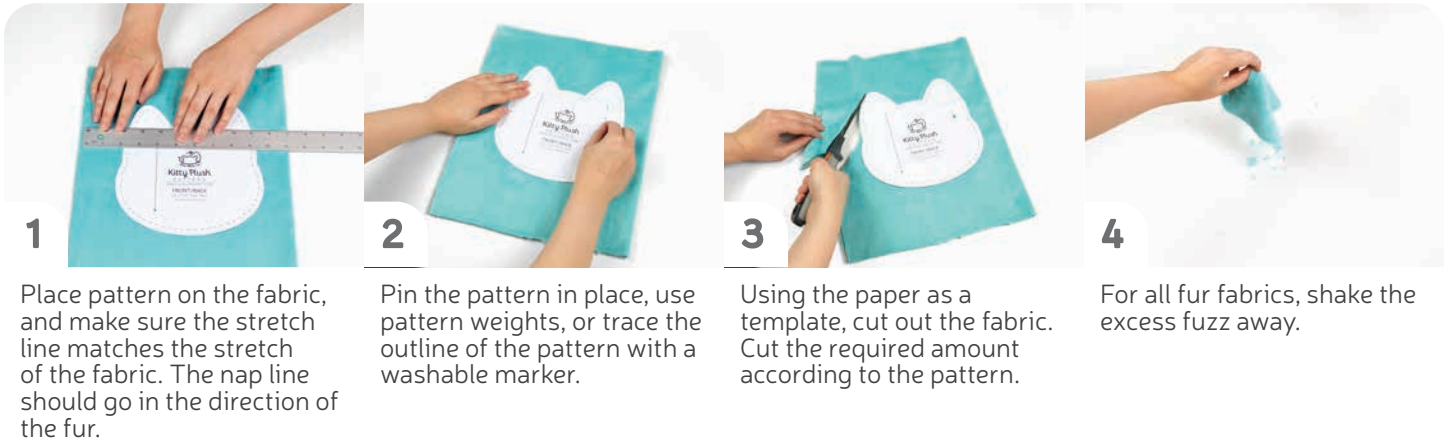
5

You can trace the patterns onto a different paper, or you can also just cut them straight from the printer paper -- be sure that each piece is fully taped together along the joins so they don't fall apart when you cut them.

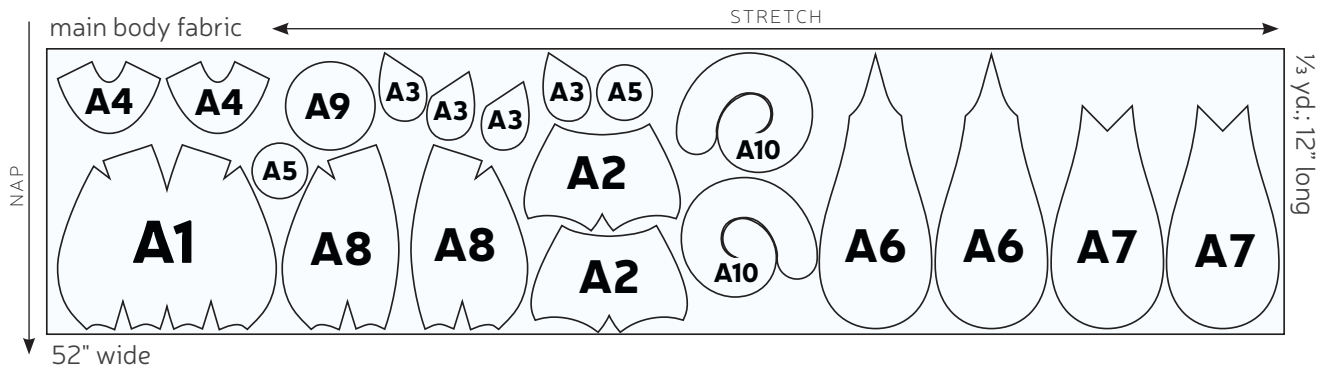
sew desu ne?

| WWW.CHOLYKNIGHT.COM |

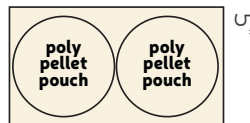
CUTTING THE FABRIC:



CUTTING LAYOUT: MEDIUM SIZE (A PIECES)



scrap fabric

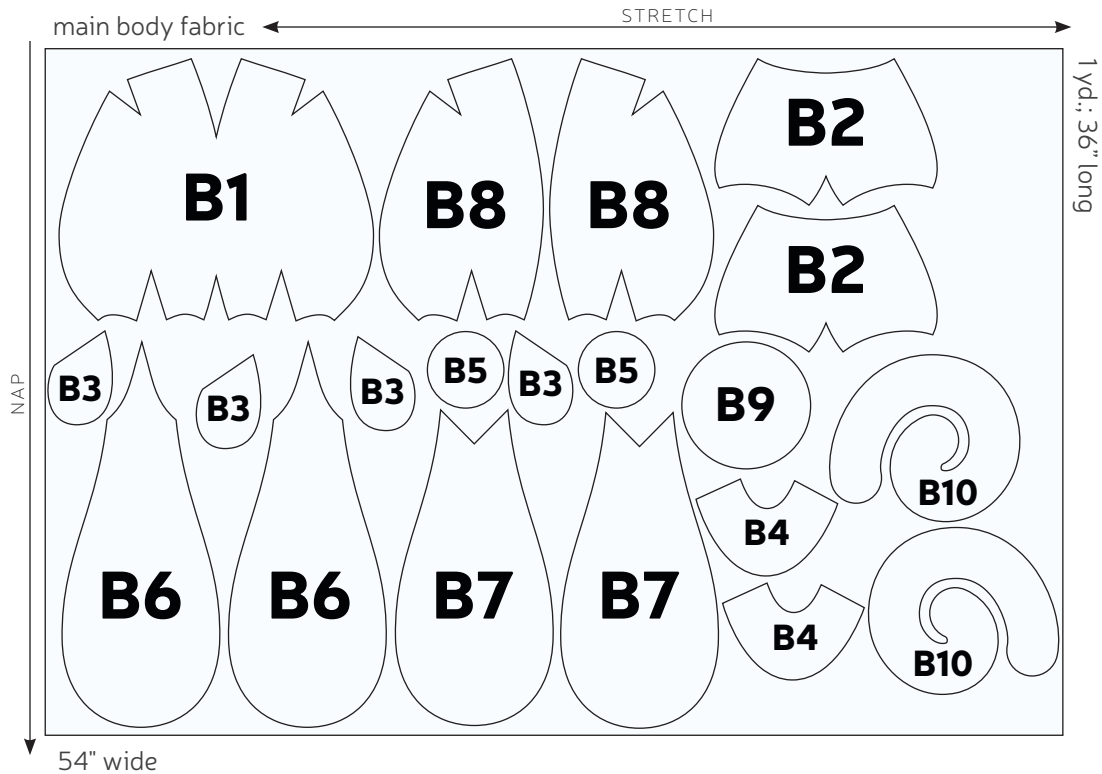


9" wide

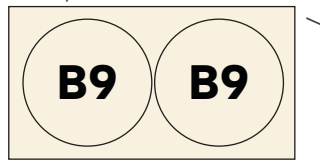
sew desu ne?

| WWW.CHOLYKNIGHT.COM |

CUTTING LAYOUT: JUMBO SIZE (B PIECES)



scrap fabric



14" wide

BEFORE YOU BEGIN:

- Briefly read the project instructions so you know what to expect.
- If desired, mark the cut fabric pieces with the markings and symbols from the pattern. Or wait until the applicable step before transferring.
- Note that a $\frac{1}{4}$ " seam allowance is used throughout the project, which is included in the pattern templates.

sew desu ne?

| WWW.CHOLYKNIGHT.COM |

1. FUSE THE FACE APPLIQUE



- a.** Grab your fusible web and applique templates. You have the option of doing the **SIMPLE** eyes or more **DETAILED** eyes. Here we're doing the **SIMPLE** eyes. You should have:
 - **eyes** (2, blue)
 - **mouth** (1, blue)
 - **blush** (2, pink)
- b.** Fuse the bumpy (adhesive) side of the fusible web onto the applique fabrics.
- c.** Cut out your applique pieces and grab your **HEAD FRONT** pieces (A1 or B1). Set your paper pattern on top of the head front piece. Align the applique piece on top where the placement markings are. Next, carefully pull the paper pattern away while holding the applique piece in place.
- d.** Fuse the applique pieces with your iron. Use a press cloth, such as a scrap piece of cotton. This will help protect any polyester or fuzzy fabrics from melting or scorching.
- e.** Add the **mouth and blush** pieces next. Use the paper pattern and photos as a placement guide.

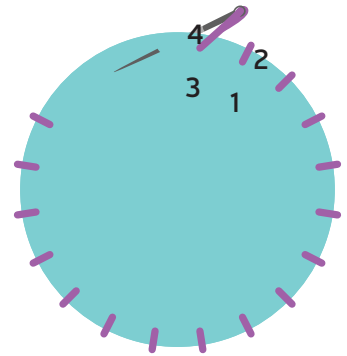
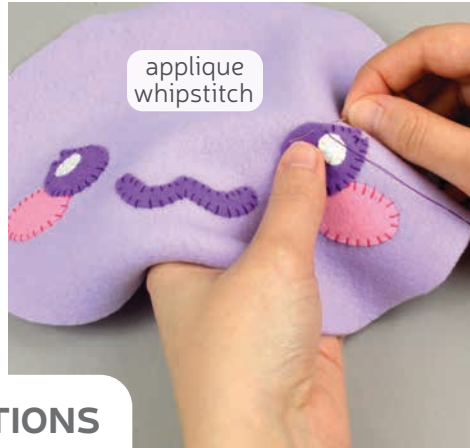
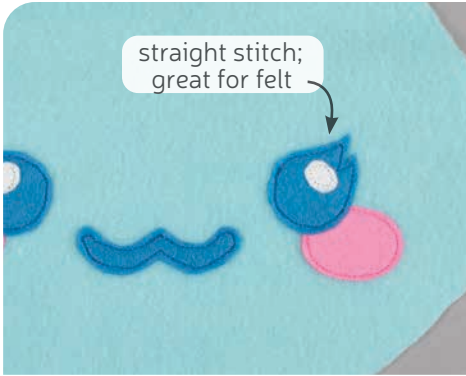
If you used heavy duty fusible web, you can keep the pieces fused without sewing, or you can sew them in place a number of ways. I've used a zigzag stitch here.

→ **Refer to the next step for some other applique options.**



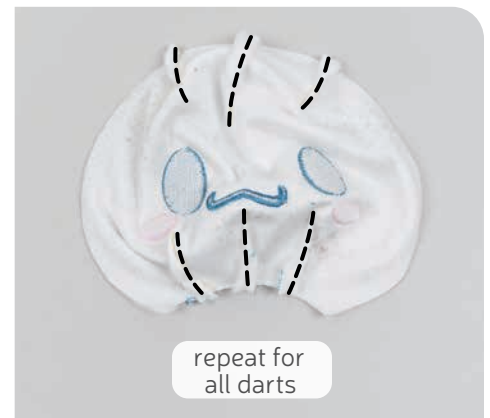
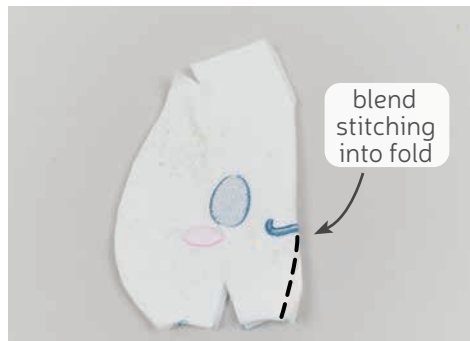
sew desu ne?

| WWW.CHOLYKNIGHT.COM |



2. OTHER APPLIQUE OPTIONS

- Other good options for applique include a straight stitch, which involves sewing around the edge of the applique pieces with a straight stitch using matching thread -- about 1/8" in from the edge.
- You can also applique by hand; I prefer a whipstitch. Thread a hand-sewing needle with some matching thread and knot it. Bring the thread up from the back of the project; about 1/8" in from the edge of the applique shape. Bring it down perpendicular from the curve, just outside of the applique shape. This completes one stitch.
- For the next stitch, bring the needle back up about 1/8" away from the previous stitch and 1/8" in from the edge just as in the first stitch. Once again, bring it down just outside the applique shape. Continue this way until you've sewn around the shape.



3. SEW THE HEAD FRONT DARTS

- Grab your **HEAD FRONT** piece (A1 or B1). This piece has **darts** all along the top and bottom. These are the small wedge shapes found labeled on the paper pattern. To sew them, start by folding the fabric along the point of the **dart** so the slanted edges match up. Make sure right sides are facing and pin the fabrics together.
- Sew from the opening of the **dart** into the fold of the fabric. Try to blend your stitching into the fold for a smooth transition and a rounder finish to the plush.
- Repeat this with all the **darts** on the head front piece. There are three along the neck at the bottom and three more along the top. There should be six **darts** total.

DARTS:

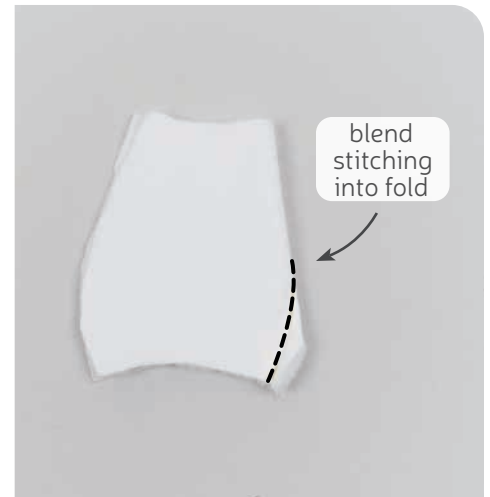
A wedge-shaped gap found in a pattern. When sewn in fabric, it creates a tuck in the fabric and develops a 3D shape. The diagonal sides of the wedge are the **LEGS**; these are matched up and sewn to the **POINT** of the dart.

sew desu ne?

| WWW.CHOLYKNIGHT.COM |

4. SEW THE BODY DARTS

- a. Grab your **BODY** pieces (A2 or B2). These pieces also have a **dart** along the center bottom similar to the head front from before. We're going to sew it the same way, starting by folding the fabric along the point of the **dart**. Make sure right sides are facing and match up the slanted edges.



- b. Sew from the opening of the **dart** into the fold of the fabric. Try to blend your stitching into the fold for a smooth transition and a rounder finish to the plush. Repeat this once more with your other body piece. Keep one for the front and set aside the other for the body back a little later.

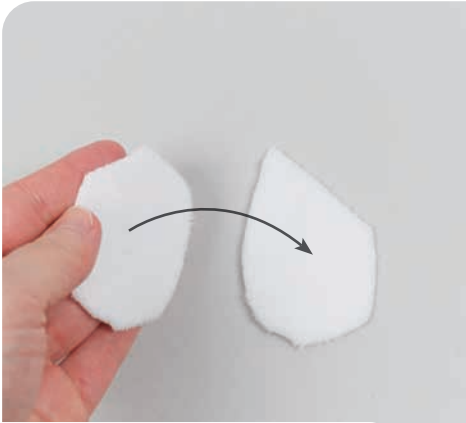
5. SEW THE FRONT NECK

- a. Grab your **HEAD FRONT** piece (1) and **BODY FRONT** piece (2). These pieces will join together at the neck edge. This is the edge labeled with **point 1** on the paper pattern if you need help with alignment.
- b. Flip over the head so now it's right sides facing with the body. Line up **point 1** at the center then line up the corners on each end. Pin the fabrics together along this edge.
- c. Sew the head to the body along the neck edge.
- d. Open up the pieces when complete.



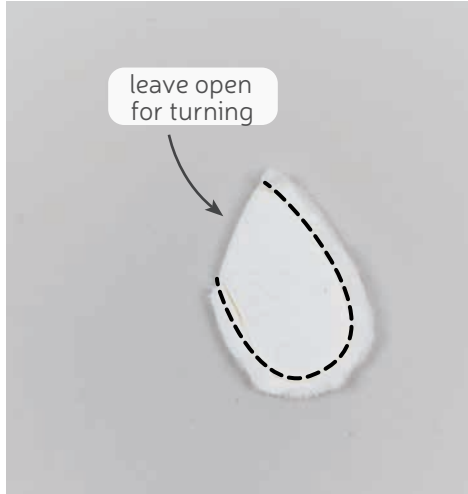
sew desu ne?

| WWW.CHOLYKNIGHT.COM |



6. SEW THE ARMS

- Grab your **ARM** pieces (3). Take two of them and align them with right sides facing and the raw edges matching up. Pin the fabrics together.
- Sew the pieces together along the long rounded edge. Leave the straight edge open for turning the piece right side out later.
- Turn the arms right side out through the opening that you left. Repeat this with your other arm pieces for two arms total.



7. BASTE THE ARMS

- Stuff the **ARMS** lightly with stuffing. Keep it very light toward the opening since we'll be attaching it to the body next.
- Grab your body front piece so far. If you haven't already, note the **arm placement lines** found on the paper pattern for the body. Transfer these lines over to the right side of your fabric. Align the open edge of the arms within these lines so the tips of the arms point down.
- Now flip the arms toward the inside so the raw edges of the arms are flush with the body. Baste the arms to the body within the seam allowance, and this will hold them in place for future steps.



BASTING:

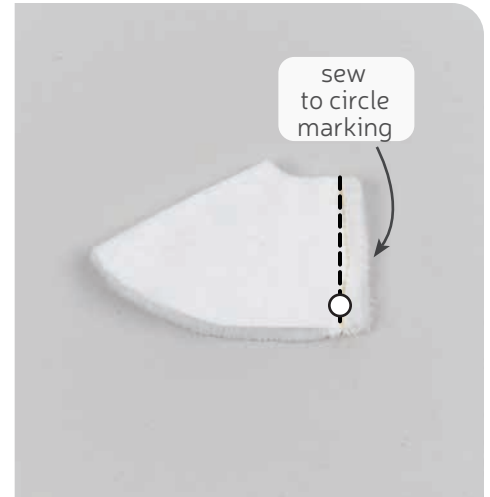
A form of temporary sewing meant to hold pieces in place. A long stitch length is often used for this reason. The finished result is not meant to be seen and sometimes is even removed later (depending on your project).

sew desu ne?

| WWW.CHOLYKNIGHT.COM |

8. SEW THE LEGS

- Grab your **LEG** pieces (4). Take one and fold it in half with right sides facing so the straight edges match up. If you're watching the **pattern markings**, this is the edge that has the **open circle marking**. Pin the fabrics together along this edge.
- Sew the leg pieces together along this edge going from the top corner down to the **open circle marking**. This should leave the curved edges free. Repeat for both legs.

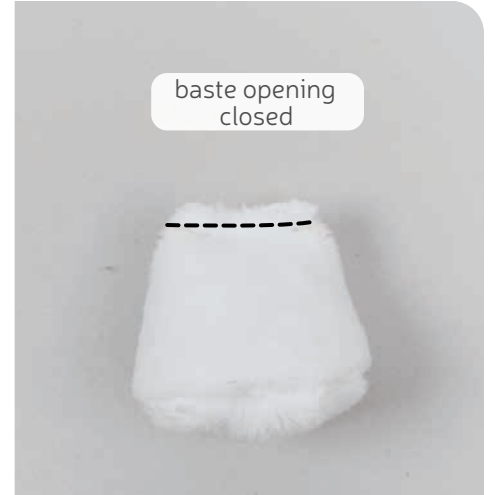


9. ATTACH THE FOOT

- Grab your **FEET** pieces (5). Take the larger open end of your **LEG** (4) and align it around the foot piece. You can use the **circle markings** on the paper pattern for extra help with alignment. The **filled circle marking** will match up at the top of the leg (the toe). The **open circle marking** will match up at the seam from the previous step. Make sure right sides are facing and pin the leg to the foot.
- Sew the leg to the foot all the way around.
- Turn the leg right side out through the smaller opening in the top. Repeat for both legs and feet.

sew desu ne?

| WWW.CHOLYKNIGHT.COM |



10. STUFF & CLOSE THE LEG

- Stuff the **LEG** lightly just like the arm from before. We're going to attach it to the body so keep the stuffing light at the top.
- Pinch the leg closed by flattening the open edge so the seam from step 8 is centered in the middle. Pin the fabrics together along this edge.
- Baste the leg closed along this edge that you pinned. This will make attaching the leg to the body a little easier. Repeat for both legs.

11. BASTE THE LEGS

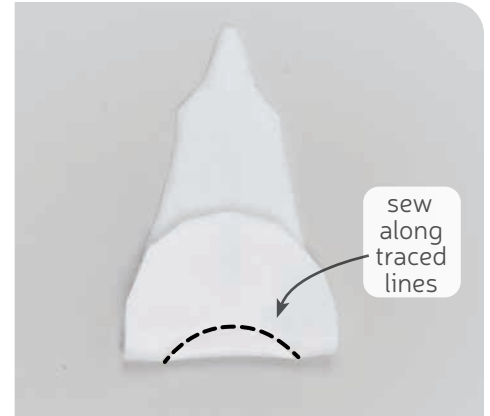
- If you haven't already, note the **leg placement lines** found on the paper pattern for the **BODY** (2). Grab your **LEGS** (4) and align them with the body. Place them so the open edge is aligned within the **placement lines** and the seams from step 8 are facing down.



- Now take the legs and flip them upward so now they're facing the body. The seams from step 8 should now be facing up and the raw edges of the legs will be flush with the body. Pin the legs to the body fabric. Baste the legs to the body within the seam allowance to hold them securely for future steps.

sew desu ne?

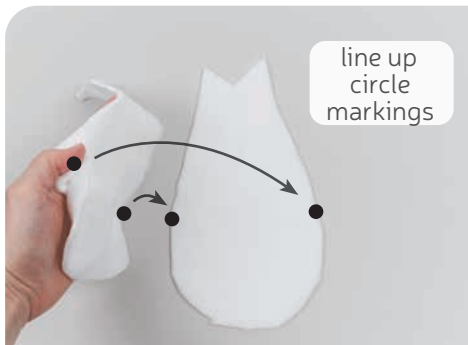
| WWW.CHOLYKNIGHT.COM |



12. SEW THE EAR DARTS

- Grab your **UPPER EAR** pieces (6). These pieces have a **double-ended dart** to create Cinnamoroll's unique ear shape. To sew it, it helps to trace the **dart lines** from the paper pattern. Cut out the opening inside the dart from the paper pattern, then use it as a tracing template on the wrong side of your ear fabrics.
- Now fold your ear fabric along the points of the **dart** so the right sides are facing and each side of the **dart** curves match up.
- Sew the **dart** along the curve that you traced. Repeat this with your other ear piece for two total.

DOUBLE-ENDED DARTS are sometimes also called **FISH EYE** or **DOUBLE POINTED DARTS**.



13. SEW THE EARS

- Grab your **LOWER EAR** pieces (7). Align it with the **UPPER EAR** so right sides are facing and the long curved edges match up. You can also use the **circle markings** for extra help with alignment. Align the **filled circle markings** on each side of the **dart**. This will help ensure the **dart** doesn't come out looking tilted or twisted on the finished ear. Make sure right sides are facing and pin the ear pieces together along the long rounded edge.
- If you haven't already, note the **opening for stuffing lines** found on the paper pattern for the **UPPER EARS** (6). Transfer these markings onto the wrong side of the fabrics you've just pinned. Sew the ear pieces together, but leave the **opening for stuffing** that you marked. Also leave the top slanted edges open.
- Turn the ear right side out through the opening. Repeat this with your other ear for two total.

Because the **EARS** are so large, they're stuffed later after the plush is sewn.

sew desu ne?

| WWW.CHOLYKNIGHT.COM |

14. CLOSE THE EARS

- a. Grab your sewn **EARS**. The shape of Cinnamoroll's ears is a little unique and trickier to sew, so basting the opening closed makes it easier. Match up the open ends at the top of the ears to close them up. Follow the **fold lines** found on the paper pattern to fold the top opening of the ears and match up the raw edges. Pin the fabrics together.
- b. Baste the opening of the ears closed. Repeat for both ears.

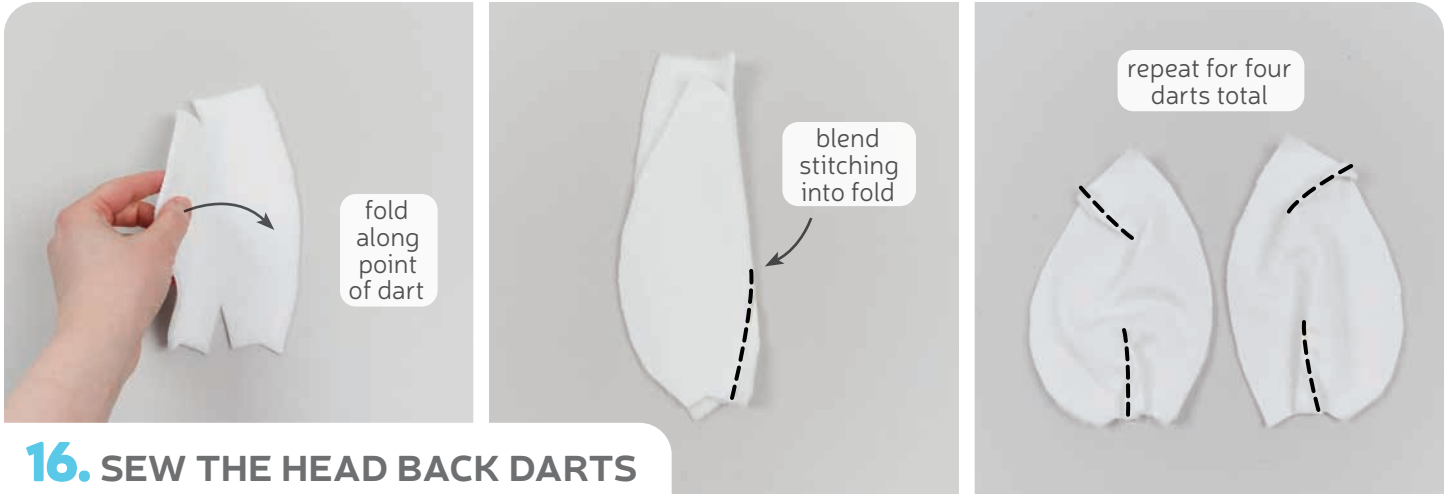


15. BASTE THE EARS

- a. If you haven't already, note the **ear placement lines** found on the paper pattern for the **HEAD FRONT** (1). Align the **EARS** along the sides of the head so the basted edges are within the **placement lines**. They should curve around the top of the head.
- b. Now grab one of the ears and flip it so it's now facing inward. Line up the basted edges of the ears with the head so the edges are flush. Pin the ears to the head.
- c. Baste the ears to the head along the edges that you pinned. Baste the ears within the seam allowance to hold them in place for future steps.

sew desu ne?

| WWW.CHOLYKNIGHT.COM |



16. SEW THE HEAD BACK DARTS

- Grab your **HEAD BACK** pieces (8). This piece has **darts** along the top and bottom just like the head front from before. We're going to sew them the same way, starting by folding the fabric along the point of the **dart**. Make sure right sides are facing and match up the slanted edges. Pin the fabrics together.
- Sew the head **darts** starting at the opening and ending at the fold. Try to blend your stitching into the fold for a smooth transition and a rounder finish to the plush.
- Repeat this with both **darts** for the head back. There should be one at the top corner and another at the neck. Then repeat this again with your other head back piece for four **darts** total.



17. SEW THE HEAD BACK

- Take your two **HEAD BACK** pieces and align them with right sides facing and the raw edges matching up. Pin the fabrics together along the center back edge. This is the edge marked with the **opening for turning** on the paper pattern.
- If you haven't already, note the **opening for turning marking** found on the paper pattern for the head back. Transfer these markings to the wrong side of the fabrics you've just pinned. Sew the pieces together along this edge, but leave the **opening for turning** that you marked.
- Open up the pieces when complete.

sew desu ne?

| WWW.CHOLYKNIGHT.COM |

18. SEW THE BACK NECK

- Grab your **HEAD BACK** piece (8) and your remaining **BODY** piece (2). These pieces will join together at the neck edge. This is the edge labeled with **point 1** on the paper pattern if you need help with alignment.
- Flip over the head so now it's right sides facing with the body. Line up **point 1** at the center then line up the corners on each end. Pin the fabrics together along this edge.
- Sew the head to the body along the neck edge.
- Open up the pieces when complete.



19. ALIGN THE FRONT WITH THE BACK

- The front and back of the body are now complete, so we're going to attach them along the sides and top. Grab both your body front and back and line them up with right sides facing. Make sure the ears and arms are tucked inside so you don't accidentally sew them. We're going to sew one section at a time.



Start by lining up the first side, going from the bottom corner of the body to the neck seam. If you're watching the **pattern markings**, this starts at the **open circle marking** at the bottom of the body. Make sure right sides are facing and pin the fabrics together.

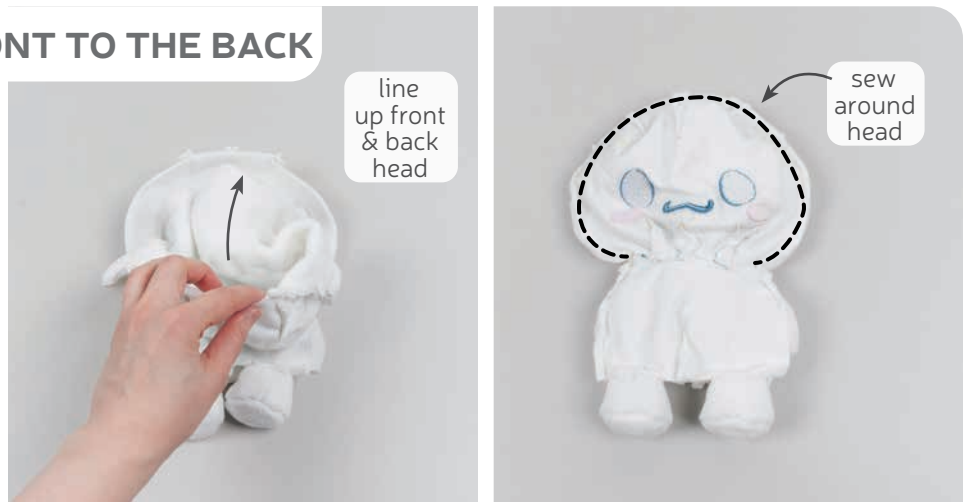
- Sew from the **circle marking** up to the neck seam.

sew desu ne?

| WWW.CHOLYKNIGHT.COM |

20. SEW THE HEAD FRONT TO THE BACK

- a. Next, line up the head front and back. Make sure the ears are tucked inside and line up the raw edges. The seams at the center top and the **darts** should line up. Make sure right sides are facing and pin the fabrics together.
- b. Sew the head front to the back all the way around. Start at one neck seam and go around to the other.



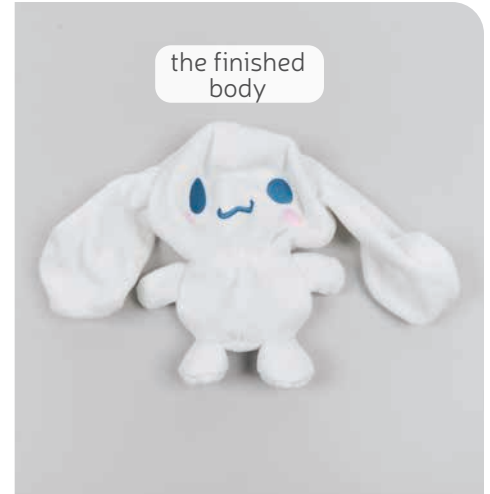
21. SEW THE FINAL SIDE

- a. Lastly we're going to sew the other side of the body. This should be the same as step 19. Take your body front and line it up with the body back. Match up the **circle marking** at the bottom corner. Make sure right sides are facing and the arm is tucked inside, then pin the edges together.
- b. Sew from the neck seam down to the **circle marking** at the corner. This should completely attach the body front to the back. The bottom will be left open for adding the bottom piece next.



sew desu ne?

| WWW.CHOLYKNIGHT.COM |



22. ATTACH THE BOTTOM

- Grab your **BOTTOM** piece (9). Take the open end of your body so far and align it with the bottom. You can use the **circle markings** found on the paper pattern for help with alignment. The **filled circles** will align with the front and back, and the **open circles** will align with the side seams of the body. Make sure right sides are facing and the legs are tucked inside, then pin the body to the bottom along this edge.
- Sew the body to the bottom all the way around.
- You can now turn the body right side out through the opening in the back of the head.



23. SEW THE POLY PELLET POUCH

- Grab your **POLY PELLET POUCH** pieces. If you haven't already, transfer the opening for filling markings found on the paper pattern for the pellet pouch. Take two matching pieces and align them together (either way facing; doesn't matter). Sew around the perimeter of the piece, leaving an opening as indicated by the markings.
- Fill the pouch with poly pellets. I like to use a spoon for this, but some people prefer a funnel.
- Once you've finished, thread a hand sewing needle and stitch the opening closed with a whip stitch or back stitch. You can also sew it by machine, but go very slowly or just use the hand wheel. Sewing over a pellet will very likely break a needle.

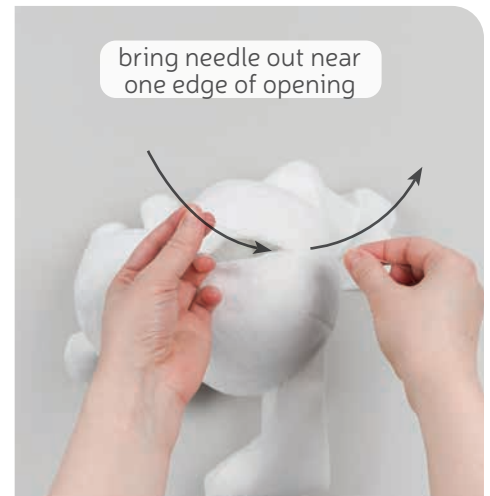
sew desu ne?

| WWW.CHOLYKNIGHT.COM |



24. INSERT THE PELLET POUCH

- Grab your filled **POLY PELLET POUCH** and insert it into the opening of the plush.
- Nestle the pouch onto the bottom of the body so it's nice and flat.
- Now you can begin stuffing your plush. Begin by stuffing the body so it's nice and firm and doesn't have any wrinkles near the seams and darts.



25. STUFF THE BODY

- Continue stuffing the head. Be sure to get plenty in the chin area near the darts so the head sticks out nicely. It also helps to get plenty in the neck so the head isn't too wobbly.
- Keep stuffing the plush in this manner until it's completely full.
- Once the head is stuffed, make sure the seam allowances in the opening are tucked inside and prepare to ladder stitch it closed. Thread a hand-sewing needle and knot it at the end. Insert the needle from the inside of the opening and out of the plush near one edge of the opening. This will leave the knot inside the plush.

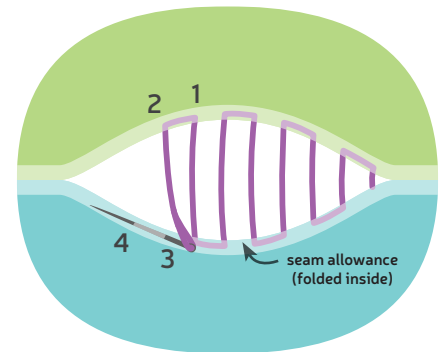
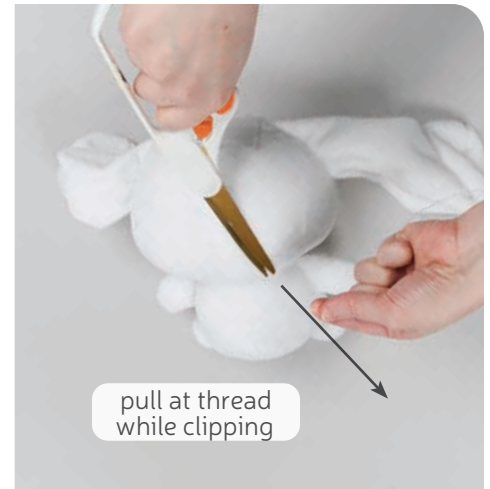
sew desu ne?

| WWW.CHOLYKNIGHT.COM |



26. CLOSE THE PLUSH

- Ladder stitch the head closed. Take a 1/8" stitch into the fold of one side of the opening, then go across and take another. Keep going down the opening until you reach the end.
- When you're finished, stitch a knot into the end of the seam. Then insert the needle near the finished knot. Bring the needle out about 1-2" away and pull it through.
- Pull the thread taut while snipping the thread. The excess thread should sink back inside the plush -- all hidden!



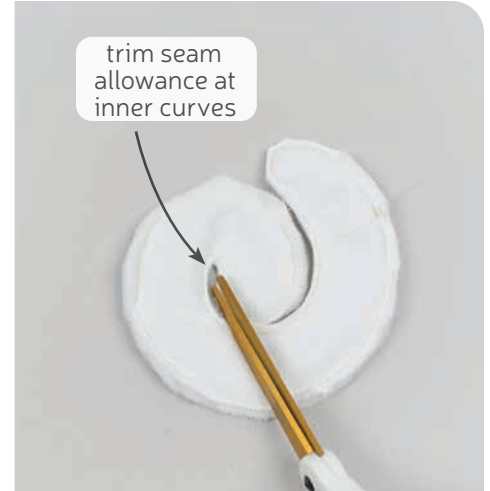
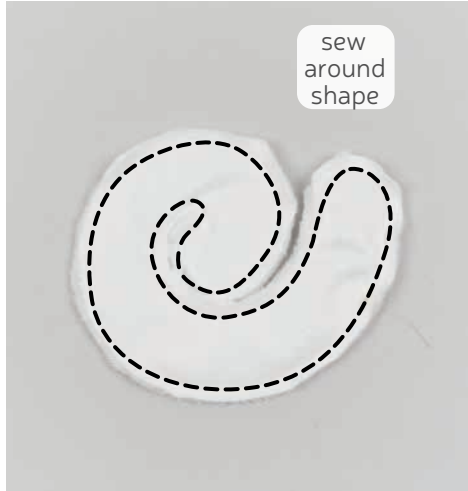
27. STUFF & CLOSE THE EARS

- Next, stuff the **EARS** using the **opening for stuffing** left before. Be sure to stuff the tips of the ears semi-firmly so there are no wrinkles around the seams. For the top of the ears, you may want to stuff them lightly. This will make the ears floppier and fun to cuddle.
- Tuck in the seam allowances from the opening, then ladder stitch the ears closed similar to the head from before. Repeat for both ears.



sew desu ne?

| WWW.CHOLYKNIGHT.COM |



28. SEW THE TAIL

- Grab your **TAIL** pieces (10). Align them with right sides facing and the raw edges matching up.
- Sew the pieces together all the way around the shape.
- Trim the seam allowance at the tight corners and curves of the piece. This is especially important near the inner curves. This will allow the piece to turn more cleanly when it's flipped next.



29. TURN & STUFF THE TAIL

- To turn the tail right side out, cut a short slit into one layer of the fabric only. Cut it centered along the outer tip area. However you can also refer to the **cutting guide** on the paper pattern for extra help.
- Turn the tail right side out through the opening that you cut.
- Stuff the tail lightly with stuffing. It just needs enough so it puffs up.

sew desu ne?

| WWW.CHOLYKNIGHT.COM |



30. ROLL THE TAIL

- Take your **TAIL** and twist the spiral shape to make a roll. Take the end on the inside and twist it gently so it makes a little spiral. We'll then hand sew the tail so it keeps this spiral shape.
- Grab a hand sewing needle and thread it with matching thread. Use a ladder stitch to sew the tail into the spiral shape made before. Start at the inner corner and twist the tail into a spiral, then ladder stitch the edges where they touch.
- Continue in this manner going through the inner curve of the spiral. When you reach the end, it helps to tuck under the outer end of the spiral so it doesn't show on the finished plush.

31. FINISH THE TAIL

- Secure the end of the tail underneath and you should have a completed roll.
- Before attaching it to the body, you may want to close up the opening. This will help keep the stuffing inside. It won't be seen on the finished plush, so you can use whatever quick stitch you prefer. A whip stitch is used here.



sew desu ne?

| WWW.CHOLYKNIGHT.COM |



32. ATTACH THE TAIL

- a. Grab your body so far as well as your sewn tail. Center the tail onto the bottom back of your body. The bottom edge of the tail should be about flush with the body. Make sure the cut end of the tail is facing the plush.
- b. Ladder stitch the tail in place where it touches the body. It's helpful to use a long basting stitch at first just to hold the tail in place. Then you can check that you like the placement. You can also check if the tail helps the plush balance and sit up properly.
- c. Once you like the placement of the tail, you can sew around the tail again with tinier, neater stitches for a more secure finish.



CONGRATS!
This completes your plush! Now give it a big hug!

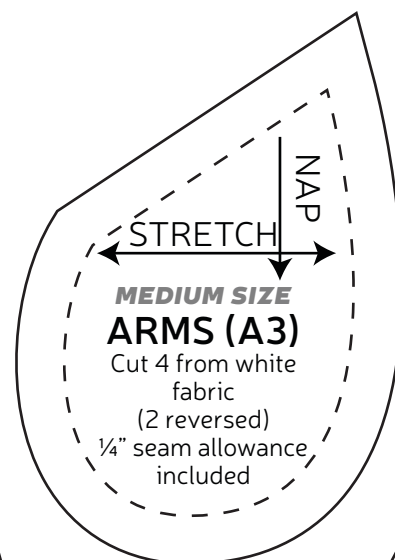
sew desu ne?

| WWW.CHOLYKNIGHT.COM |

TEST SQUARE

2"

measure this square to
be sure you've printed
at the proper
proportions

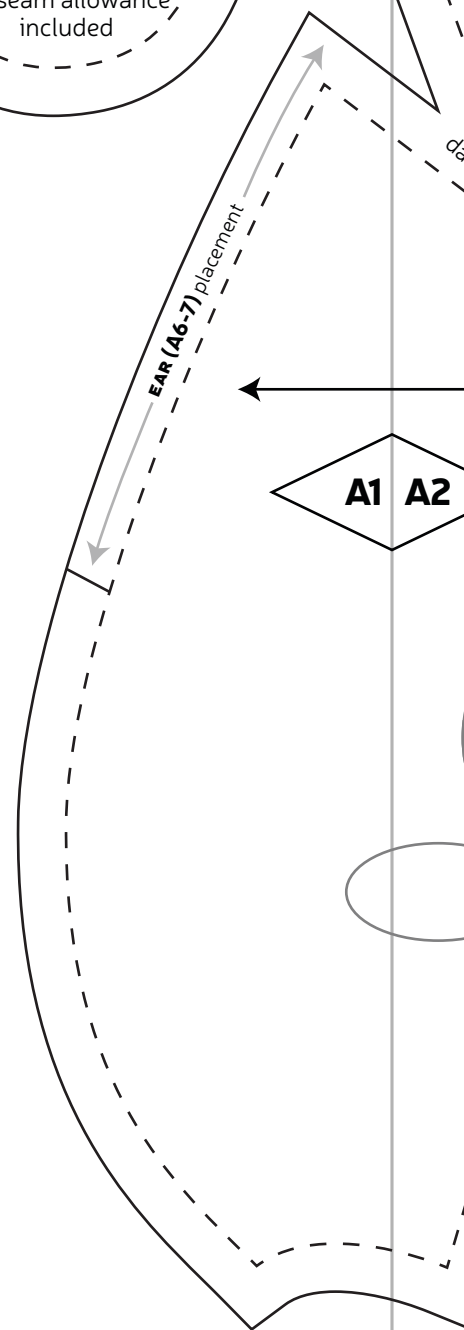
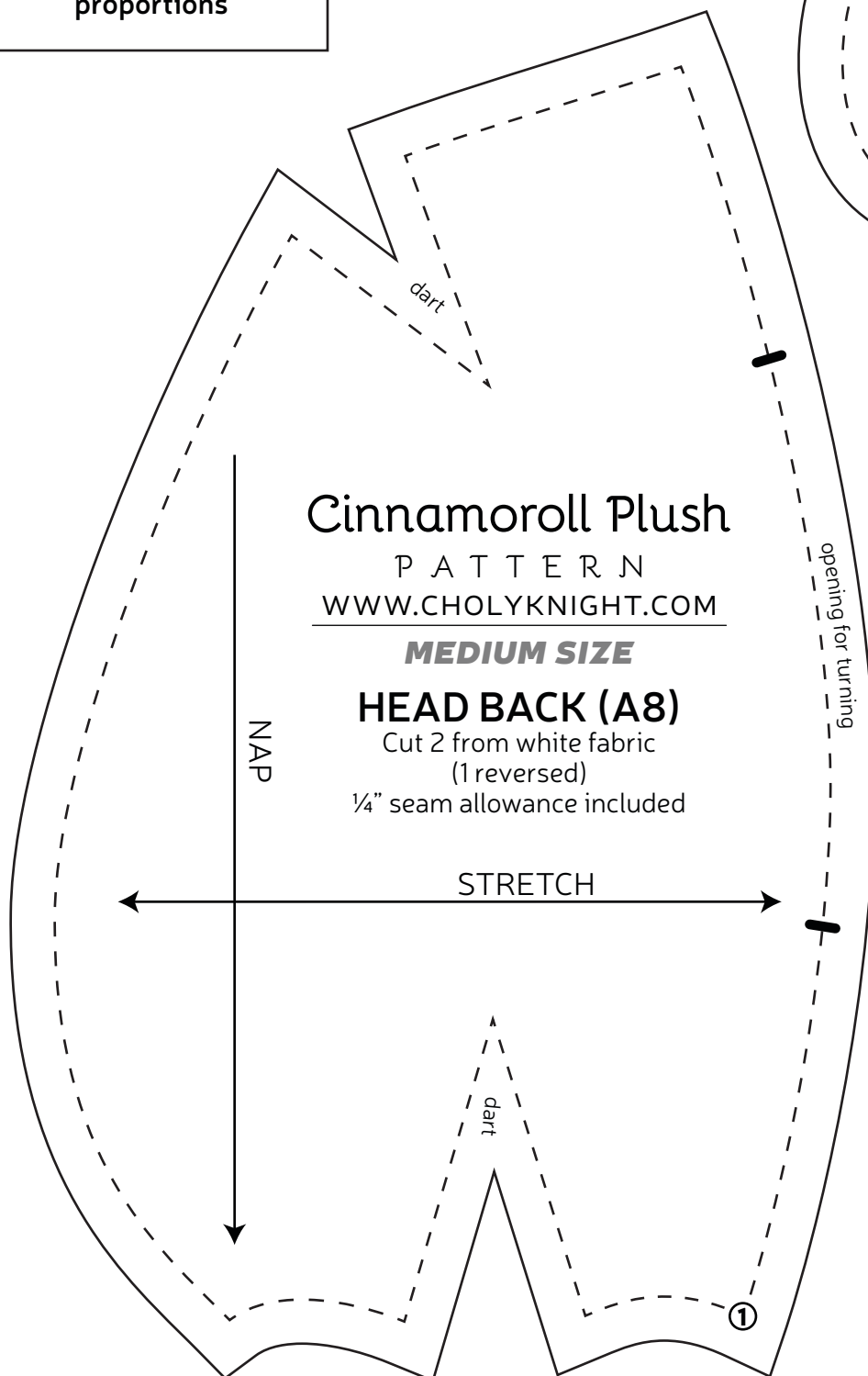


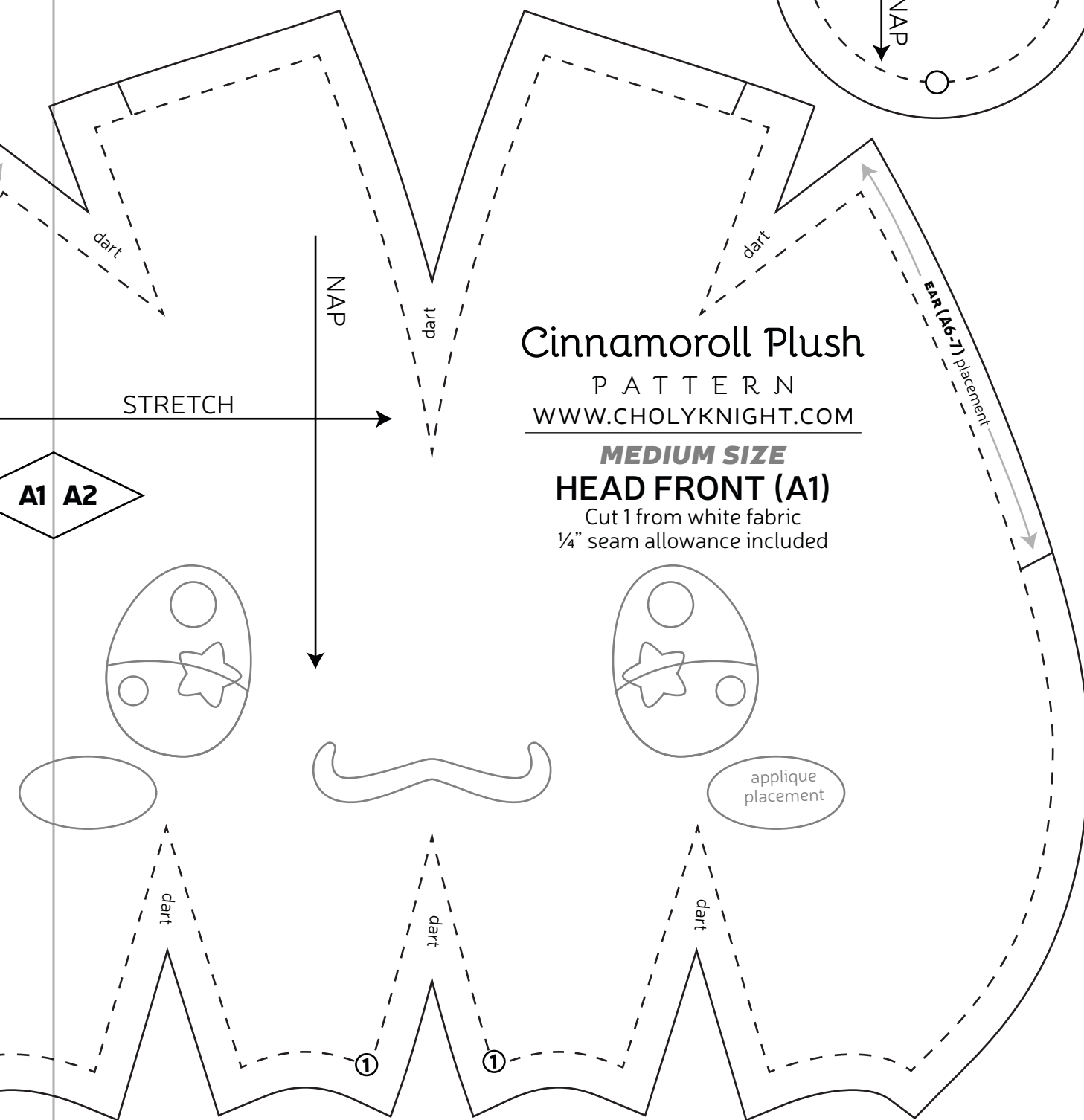
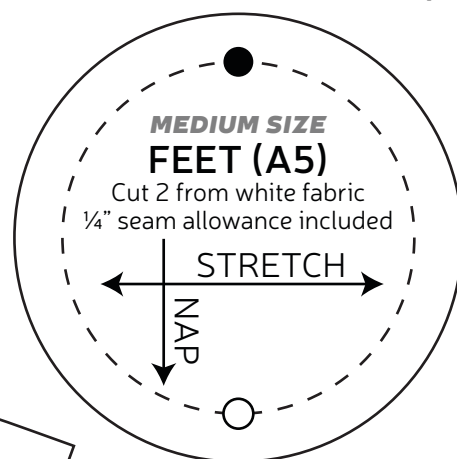
Cinnamoroll Plush

P A T T E R N

WWW.CHOLYKNIGHT.COM
MEDIUM SIZE**HEAD BACK (A8)**

Cut 2 from white fabric
(1 reversed)
1/4" seam allowance included



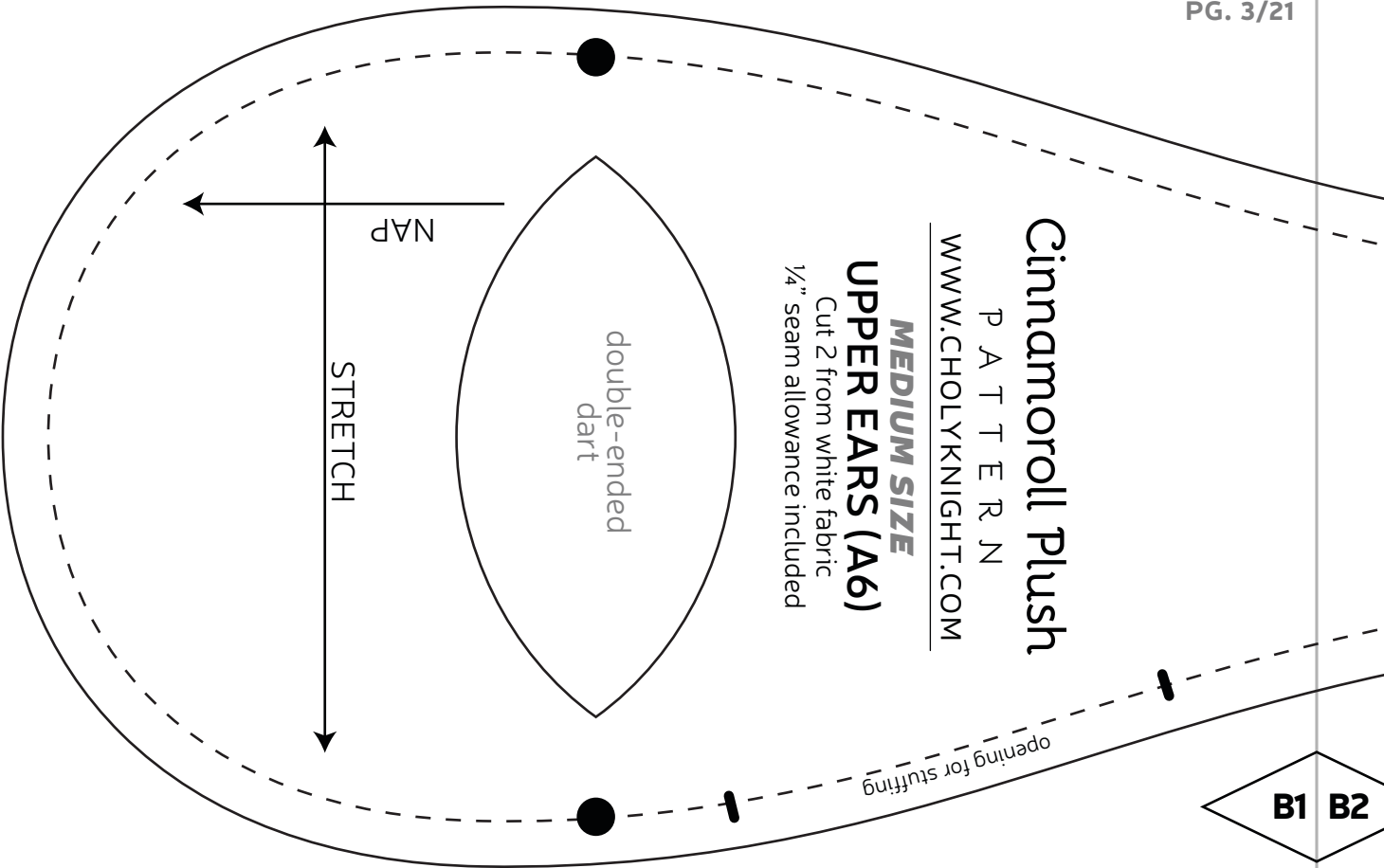


Cinnamoroll Plush

P A T T E R N
WWW.CHOLYKNIGHT.COM

MEDIUM SIZE
UPPER EARS (A6)

Cut 2 from white fabric
1/4" seam allowance included

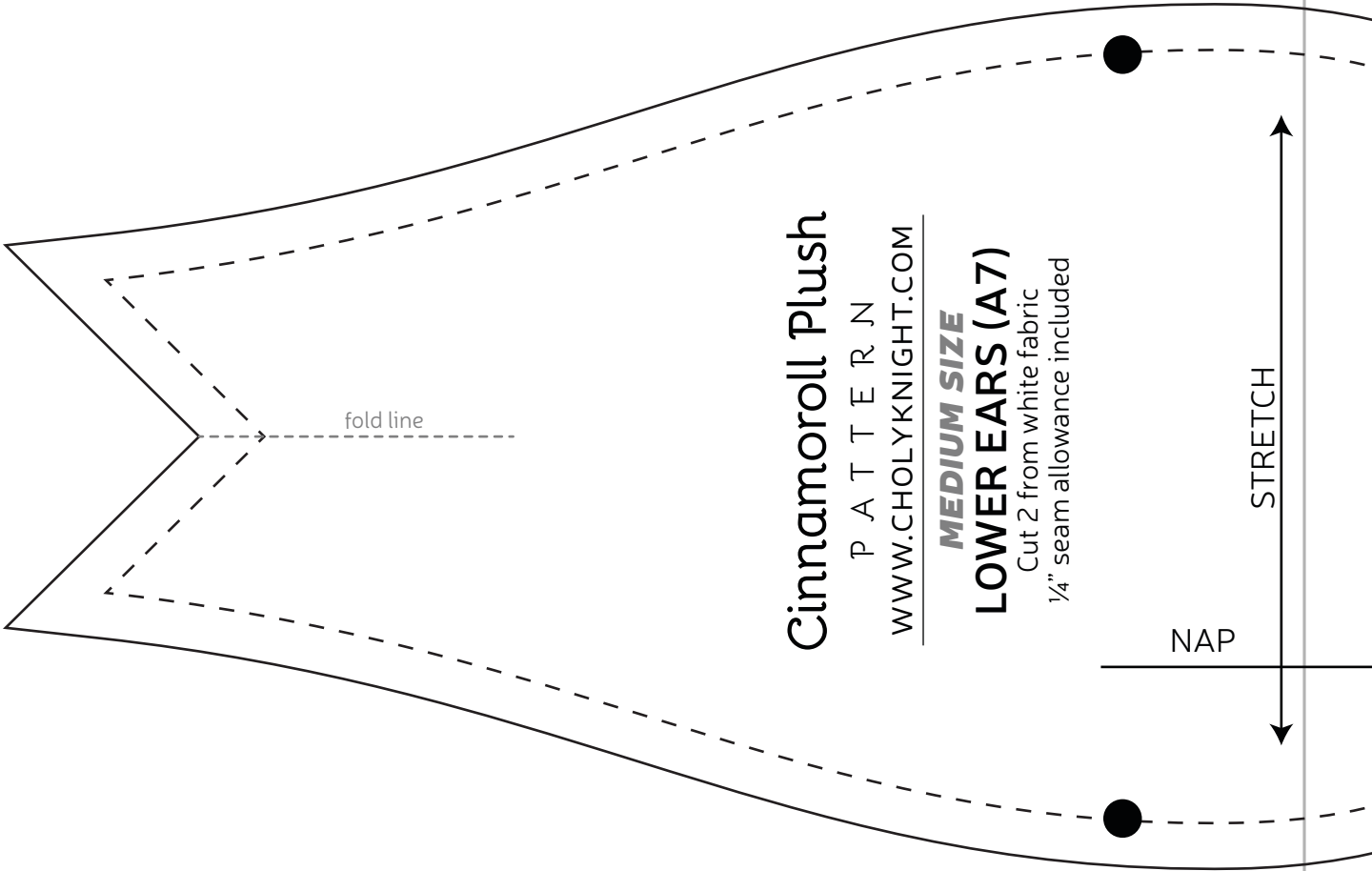


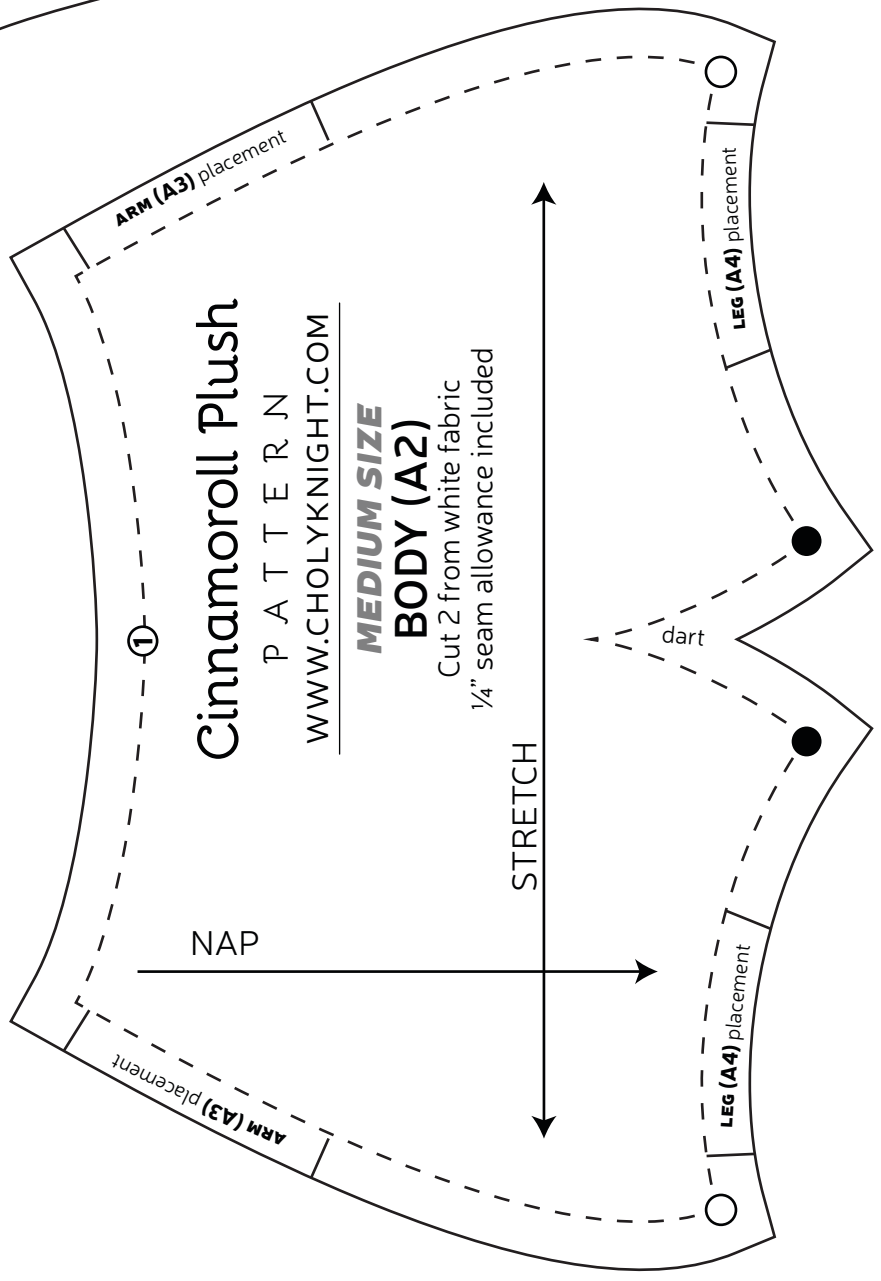
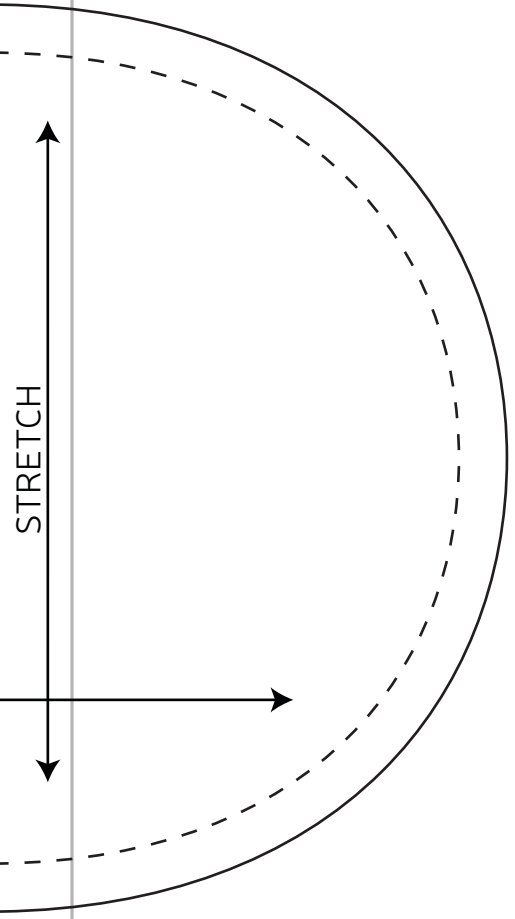
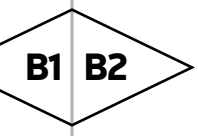
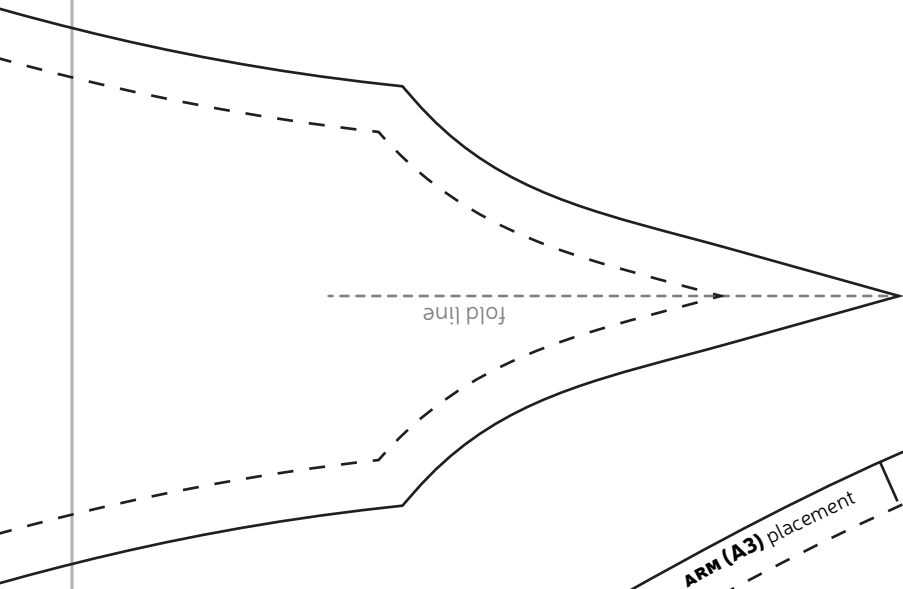
Cinnamoroll Plush

P A T T E R N
WWW.CHOLYKNIGHT.COM

MEDIUM SIZE
LOWER EARS (A7)

Cut 2 from white fabric
1/4" seam allowance included





Cinnamoroll Plush

P A T T E R N

WWW.CHOLYKNIGHT.COM

MEDIUM SIZE

BODY (A2)

Cut 2 from white fabric
1/4" seam allowance included

NAP

STRETCH

ARM (A3) placement

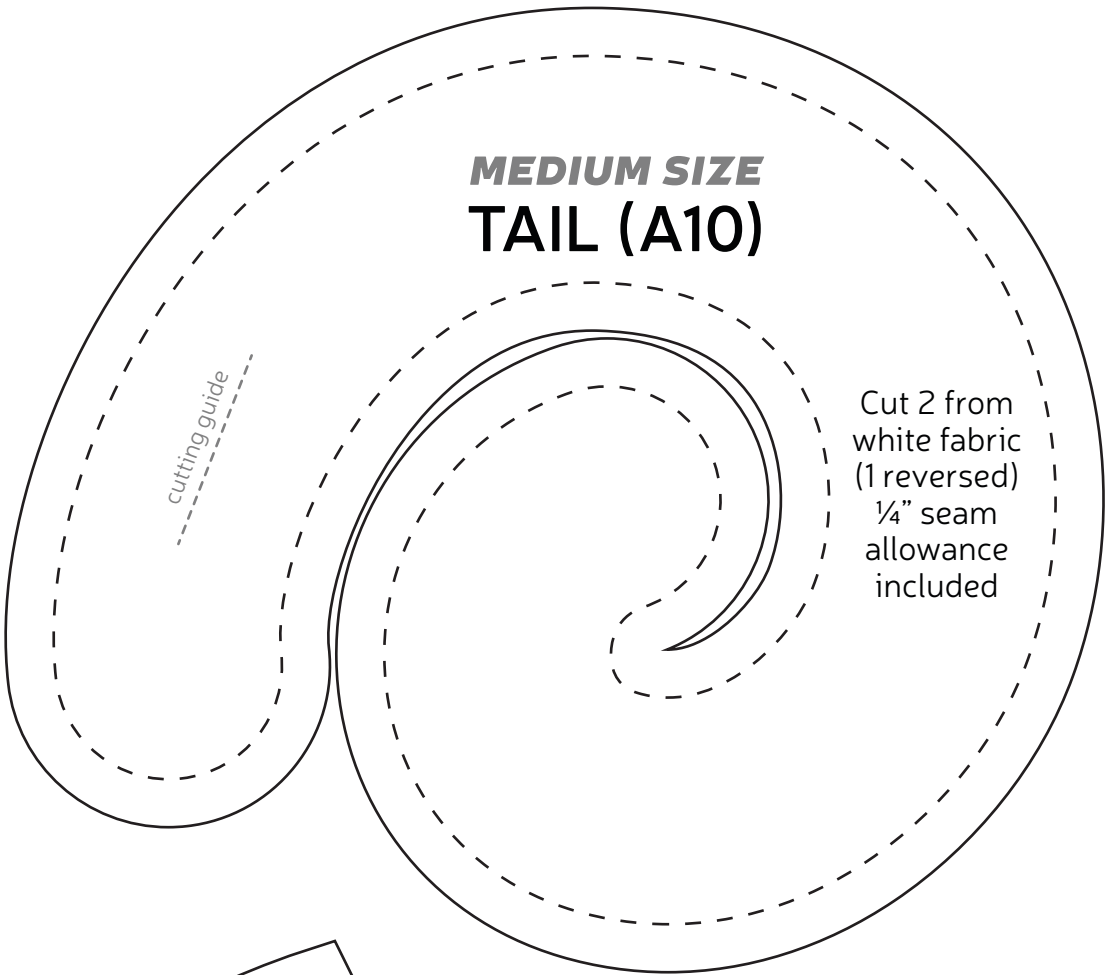
LEG (A4) placement

dart

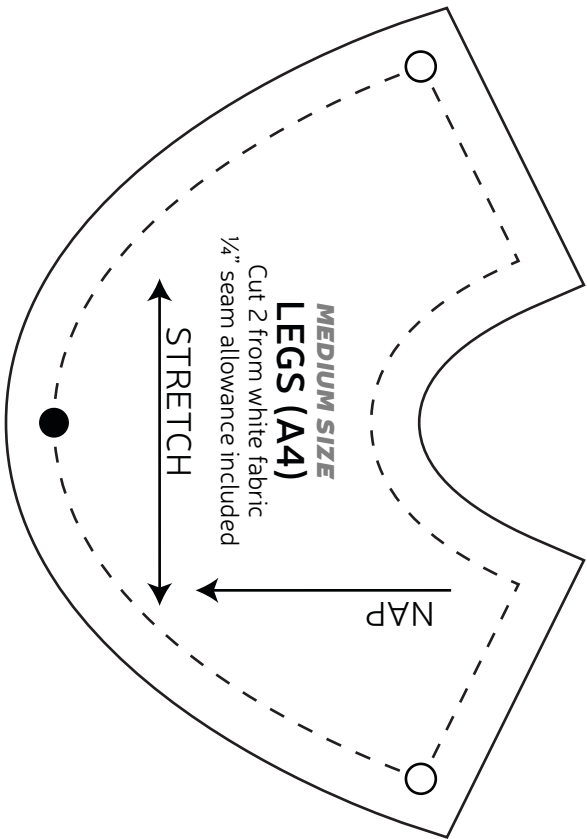
LEG (A4) placement

1

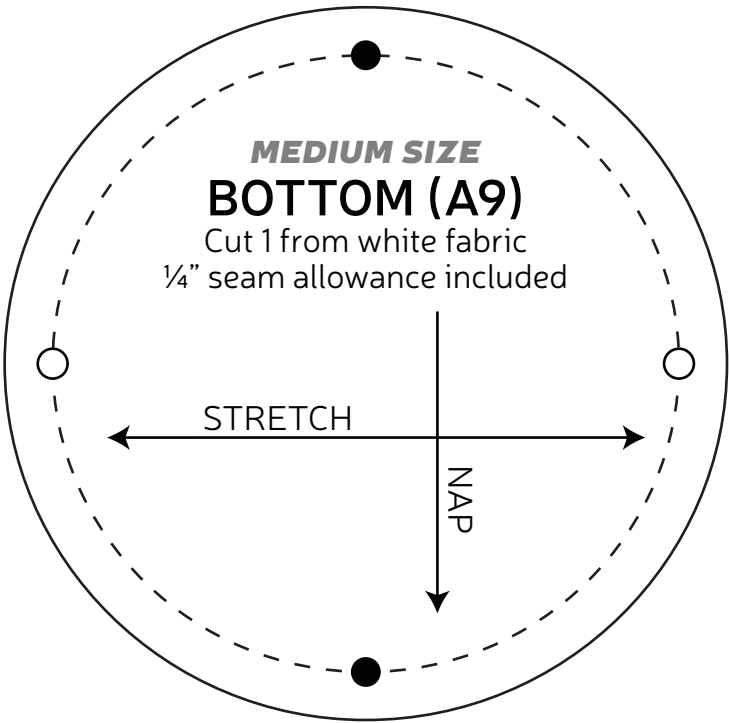
**MEDIUM SIZE
TAIL (A10)**

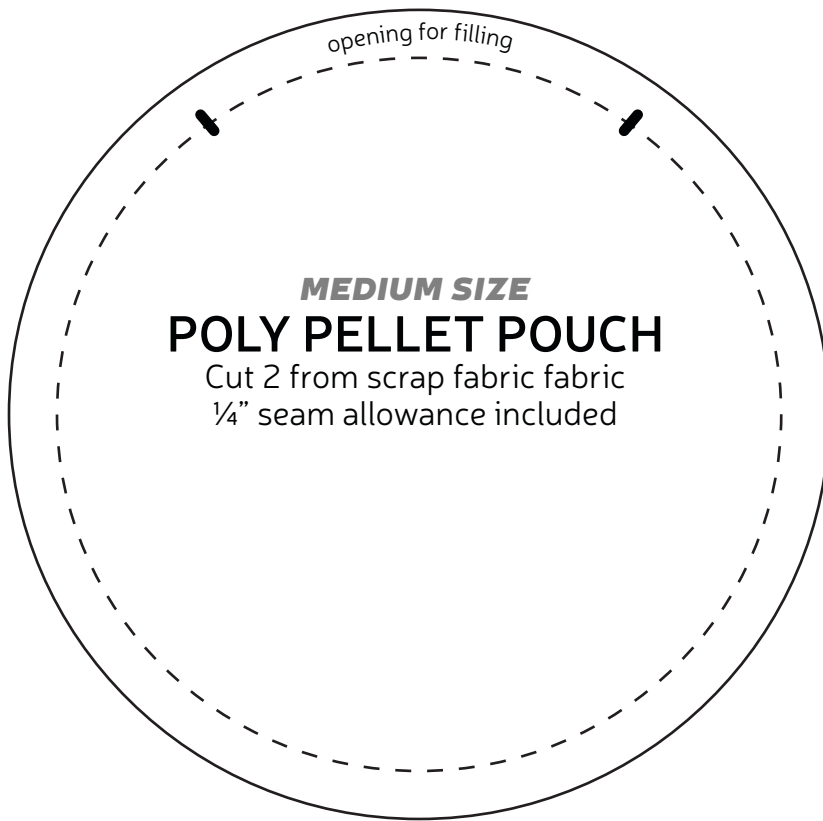


**MEDIUM SIZE
LEGS (A4)**



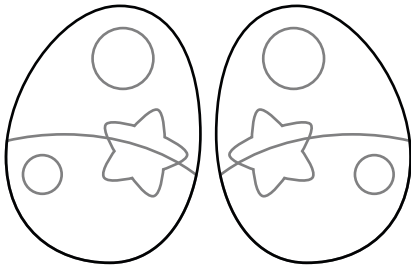
**MEDIUM SIZE
BOTTOM (A9)**





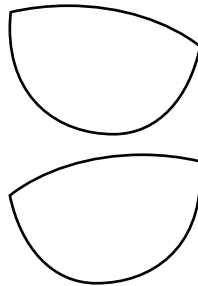
EYES

applique
trace & cut 1 each
from medium blue



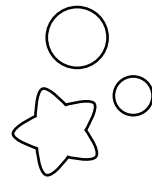
EYE HIGHLIGHTS

applique
trace & cut 1 each
from light blue



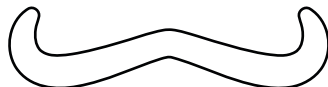
EYE SHINES

applique
trace & cut 2 each
from white



MOUTH

applique
trace & cut 1 from blue



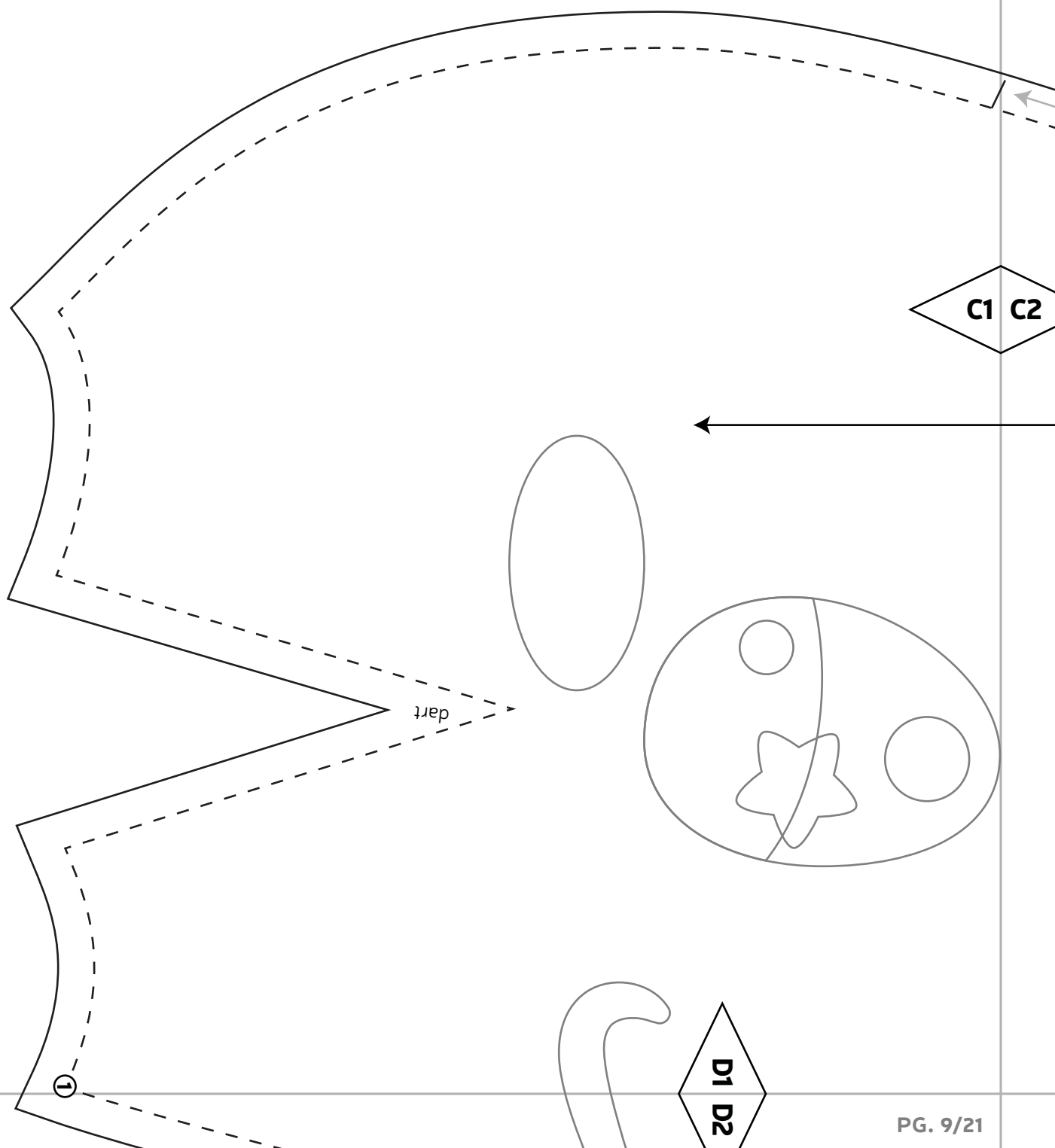
BLUSH

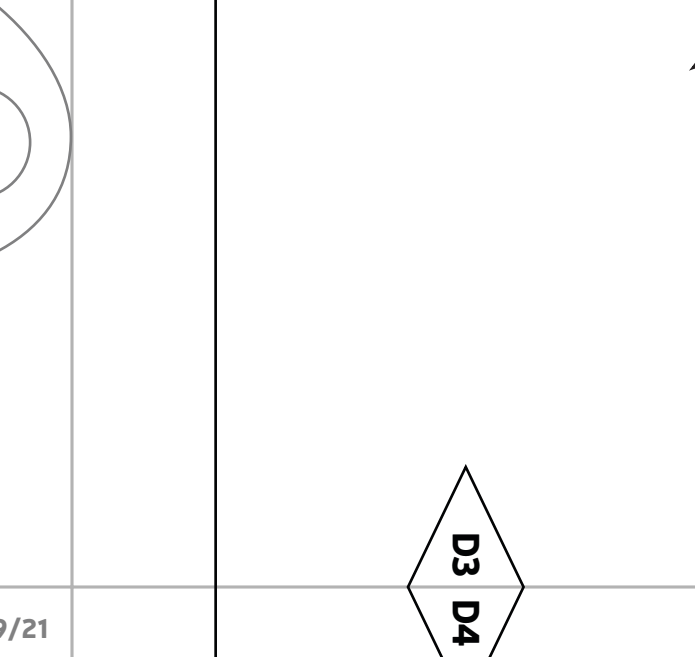
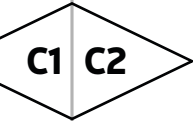
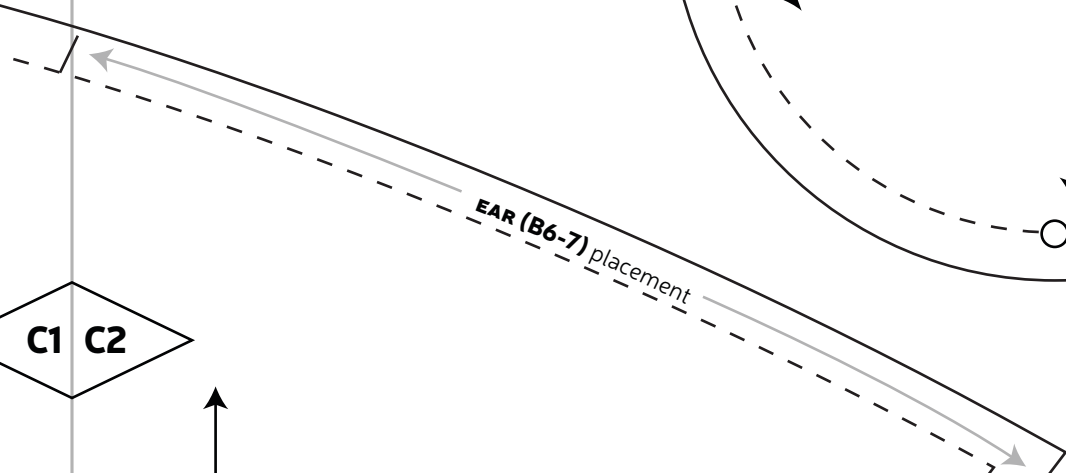
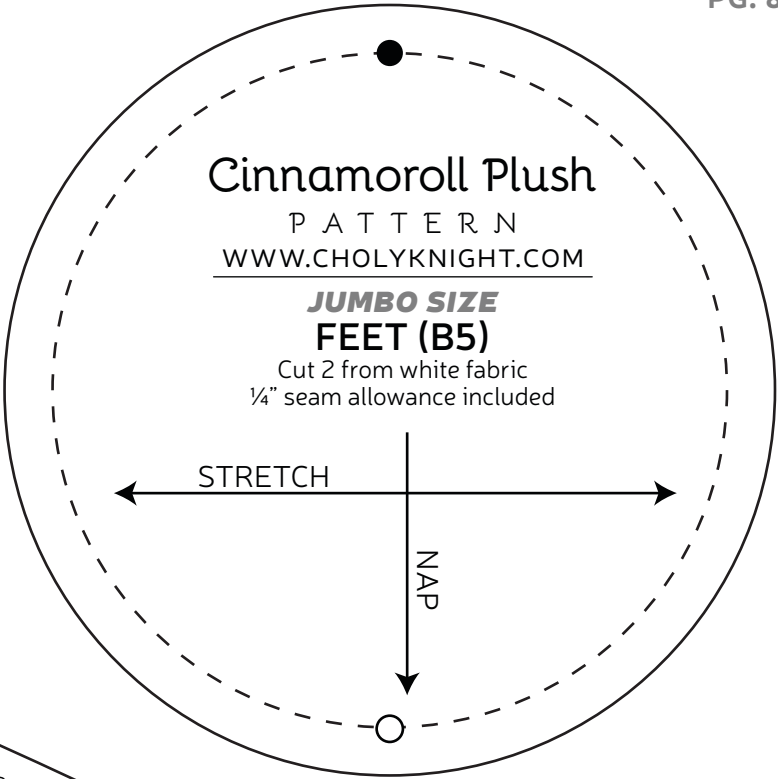
applique
trace & cut 2
from pink

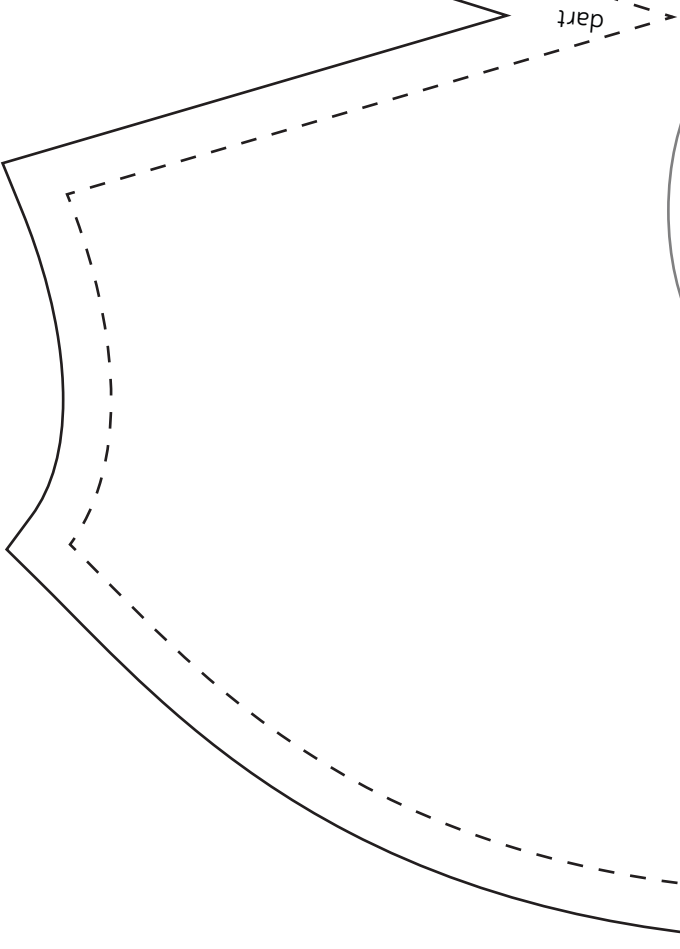
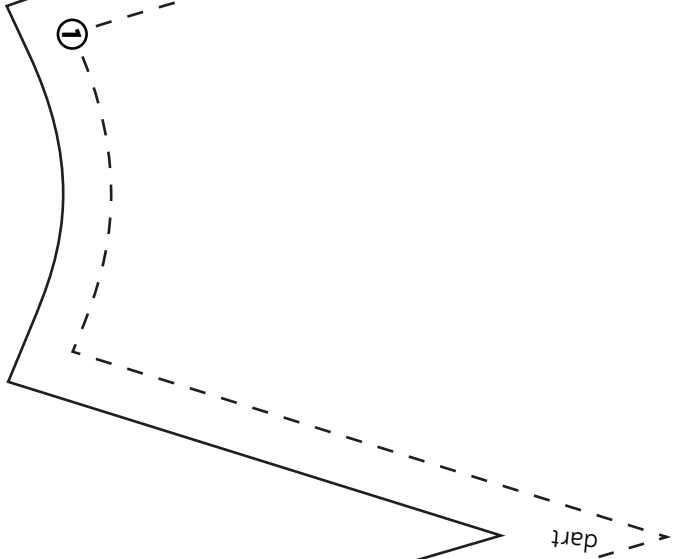
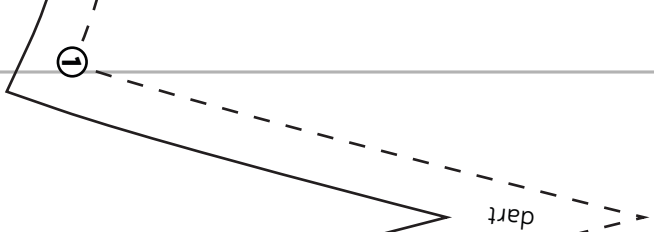
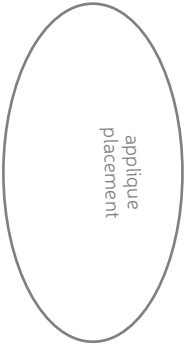
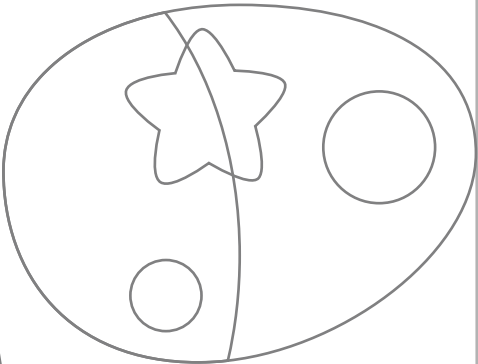
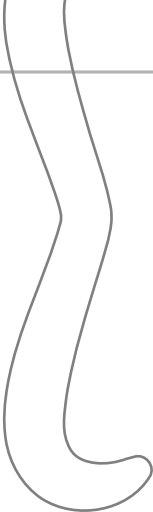


TEST SQUARE 2"

measure this square to
be sure you've printed
at the proper
proportions







D3 D4

dart

dart

E1 E2

Cinnamoroll Plush

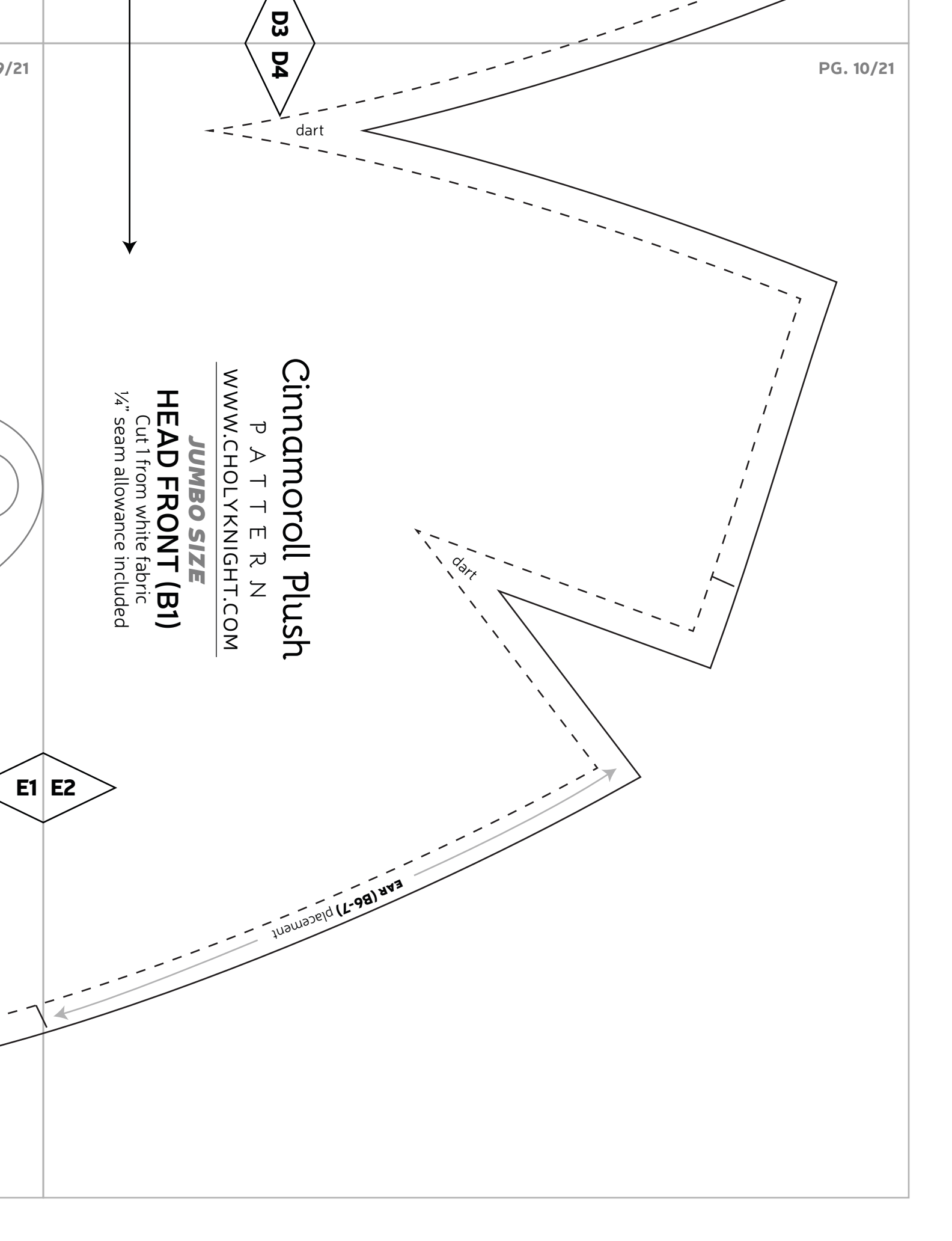
P A T T E R N

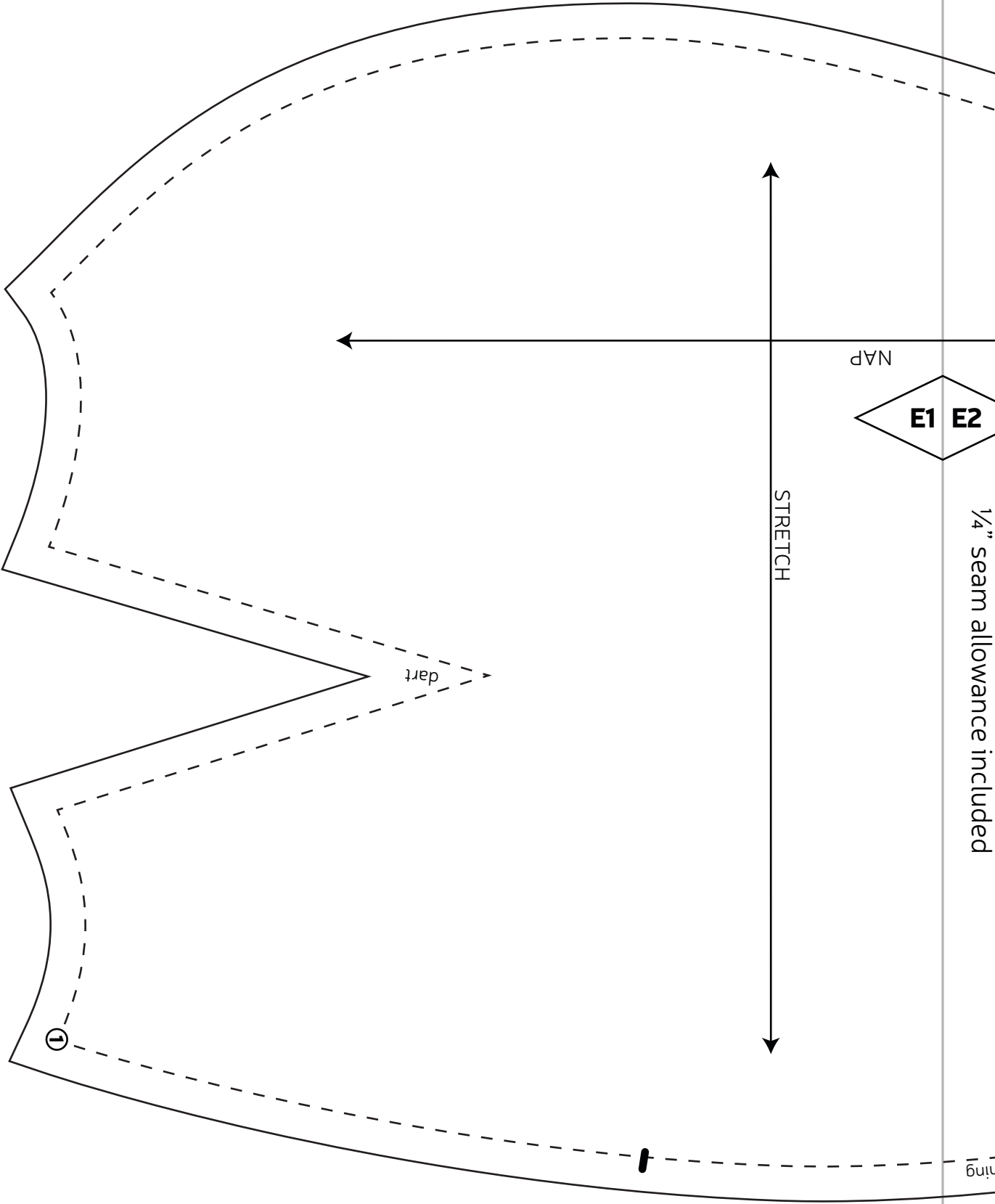
WWW.CHOLYKNIGHT.COM

JUMBO SIZE

HEAD FRONT (B1)

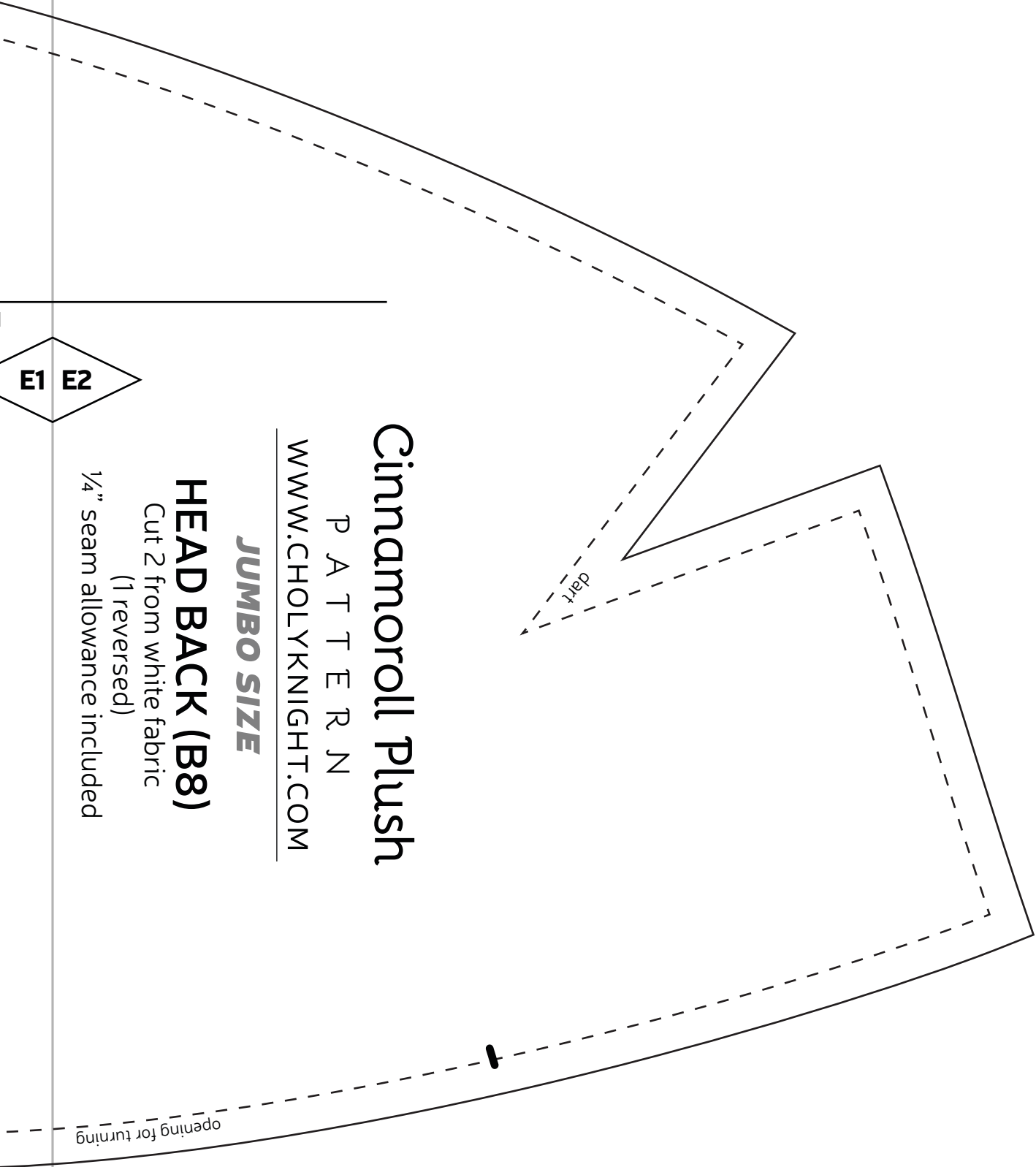
Cut 1 from white fabric
1/4" seam allowance included





1/4" seam allowance included

6/10



Cinnamoroll Plush

P A T T E R N

WWW.CHOLYKNIGHT.COM

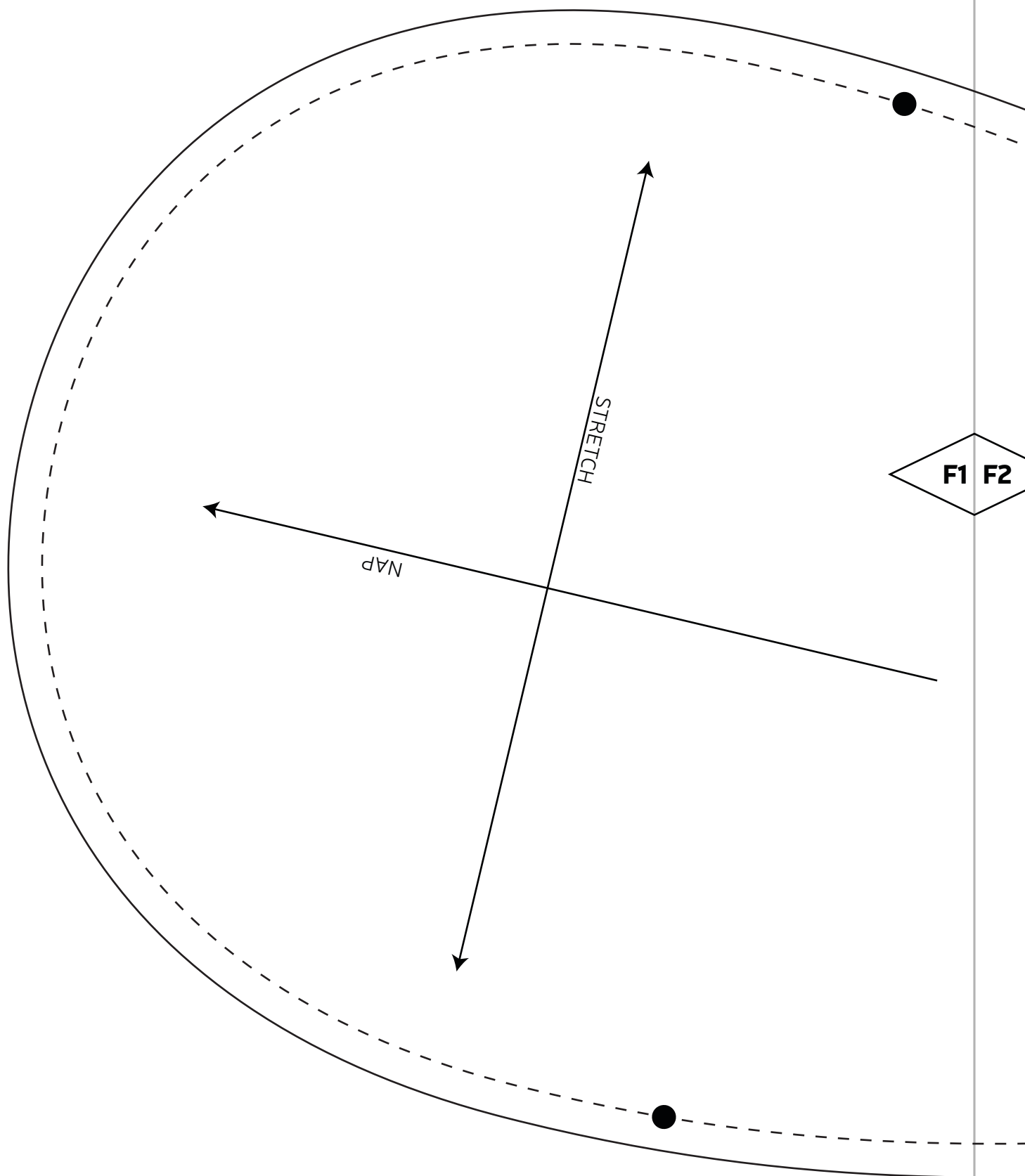
JUMBO SIZE

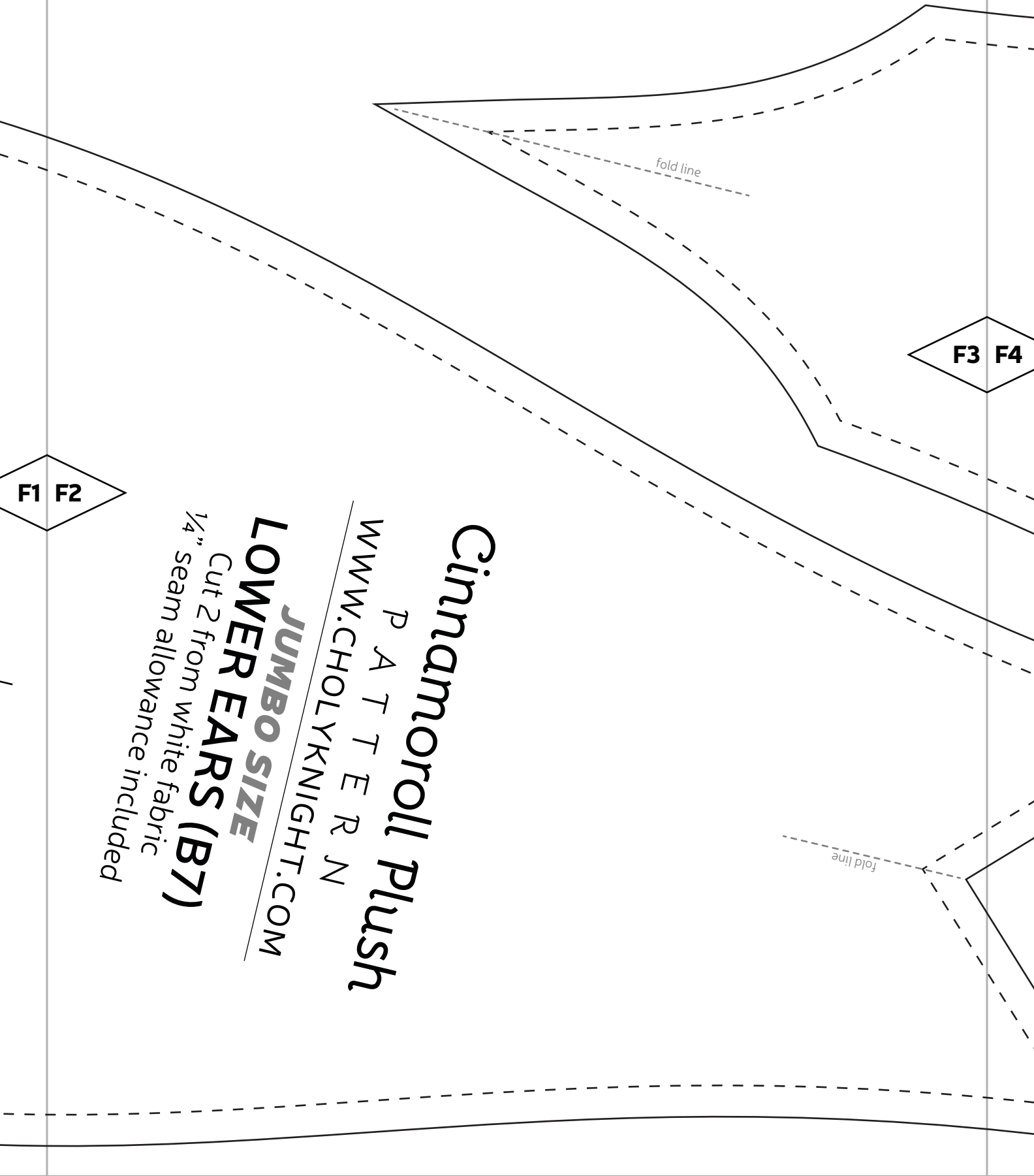
HEAD BACK (B8)

Cut 2 from white fabric
(1 reversed)

1/4" seam allowance included

E1 E2





F3 F4

F1 F2

Cinnamoroll Plush
P A T T E R N
WWW.CHOLYKNIGHT.COM
JUMBO SIZE
LOWER EARS (B7)
Cut 2 from white fabric
1/4" seam allowance included

opening for stuffing

F3 F4

Cinnamoroll Plush

P A T T E R N

WWW.CHOLYKNIGHT.COM

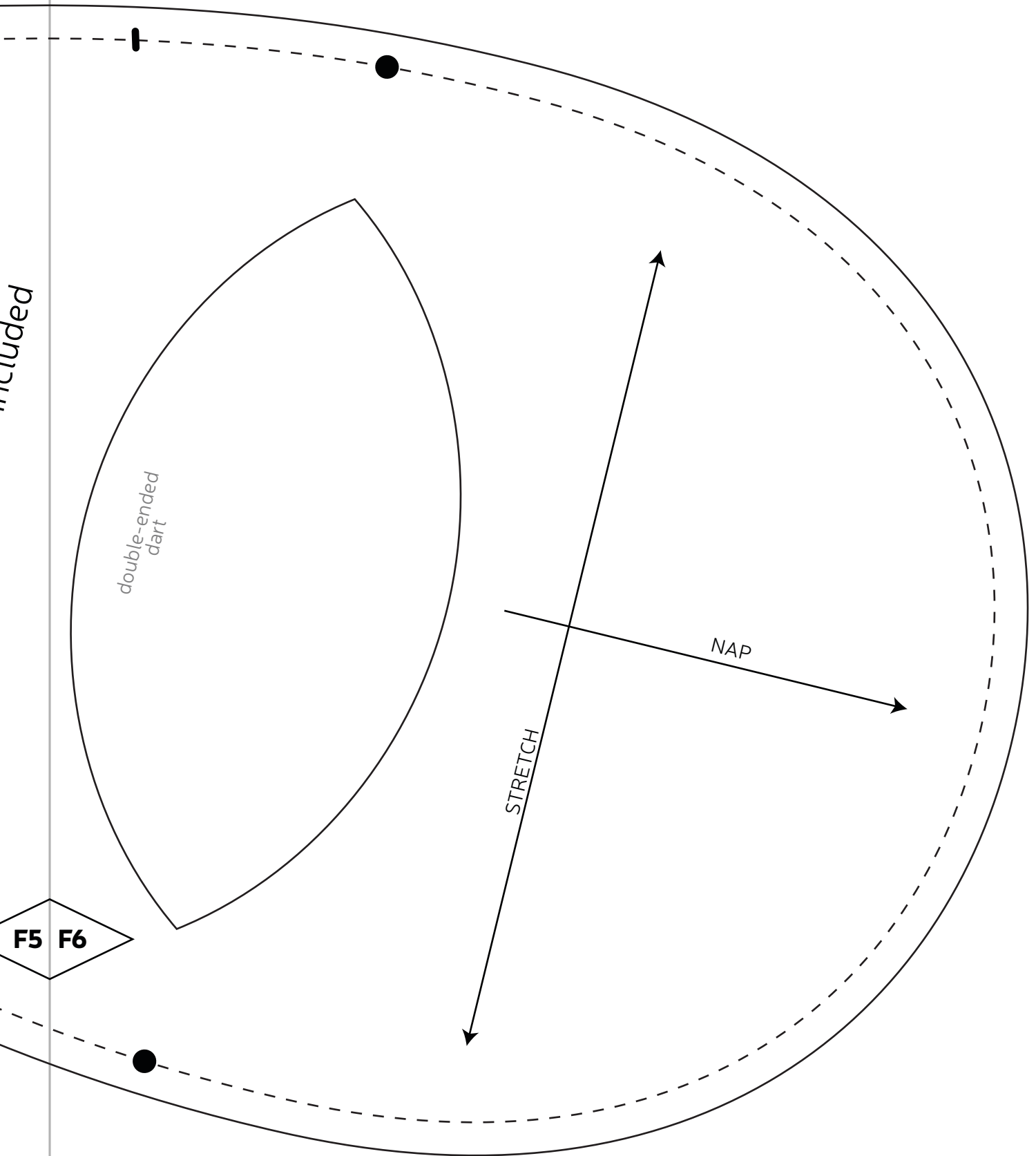
JUMBO SIZE

UPPER EARS (B6)

Cut 2 from white fabric
1/4" seam allowance included

F5 F6

included

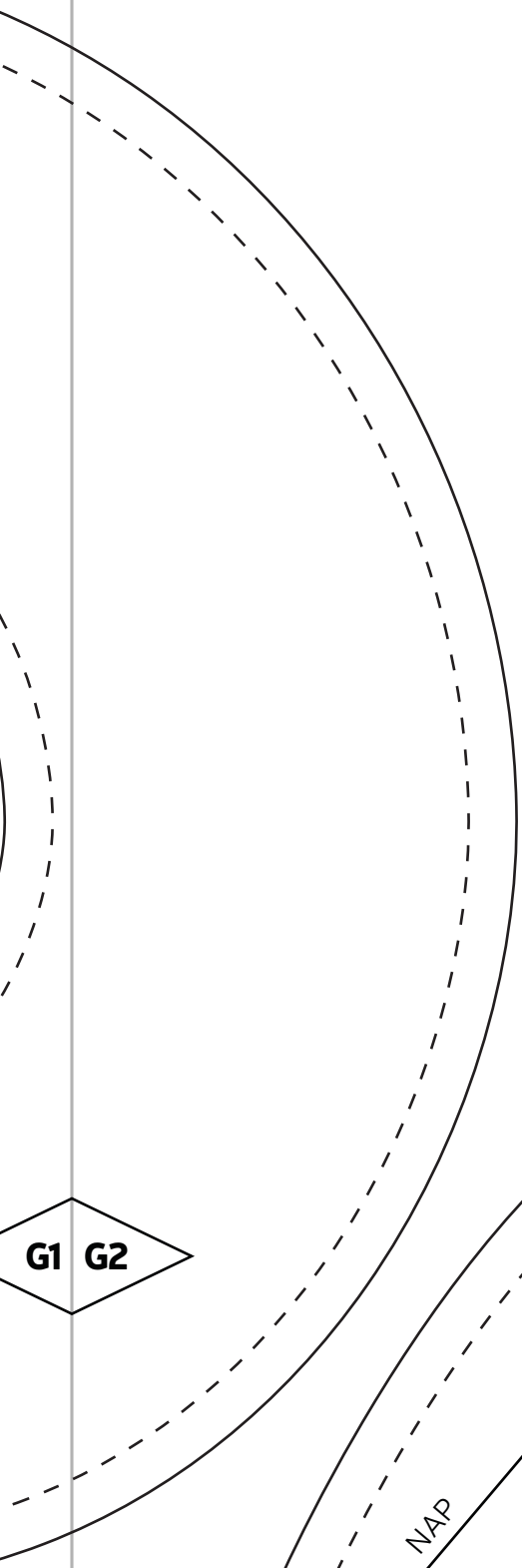


JUMBO SIZE
TAIL (B10)

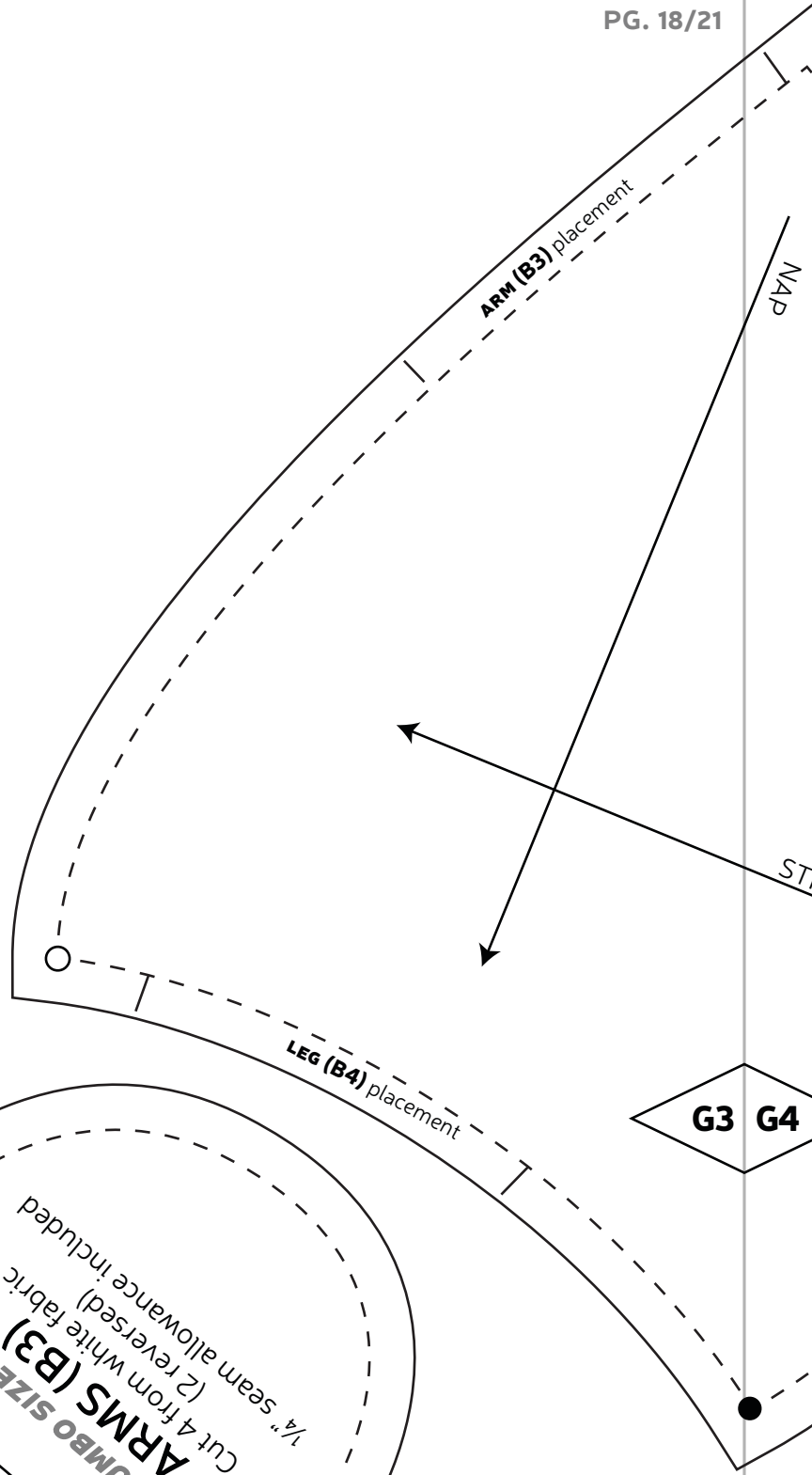
Cut 2 from white fabric
(1 reversed)
1/4" seam allowance included

cutting guide

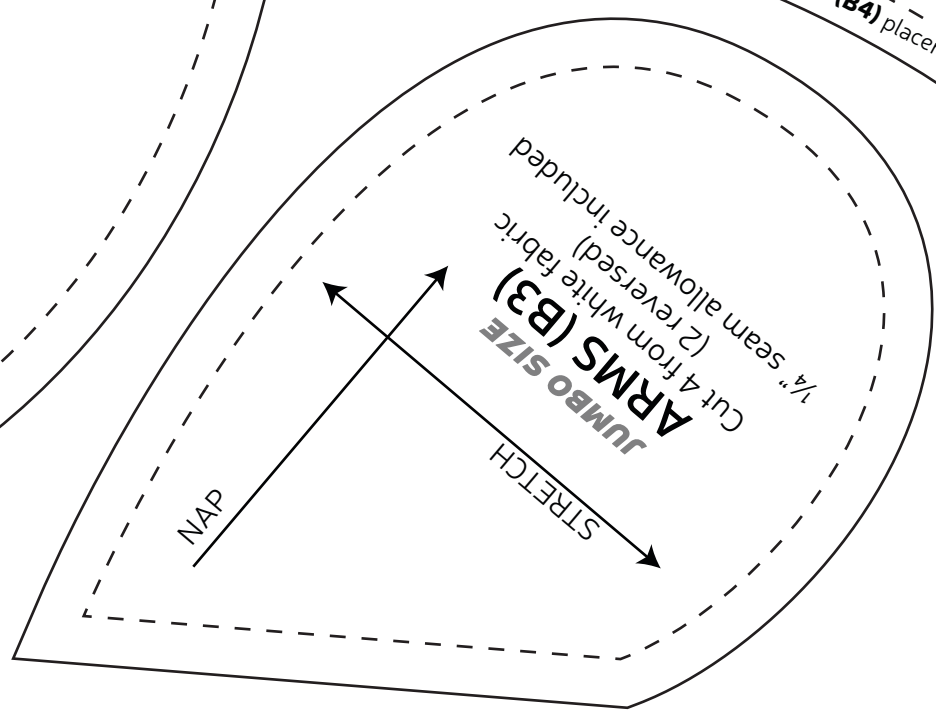
G1 G2



G1 G2



G3 G4



JUMBO SIZE
Cut 4 from white fabric
(2 reversed)

NAP

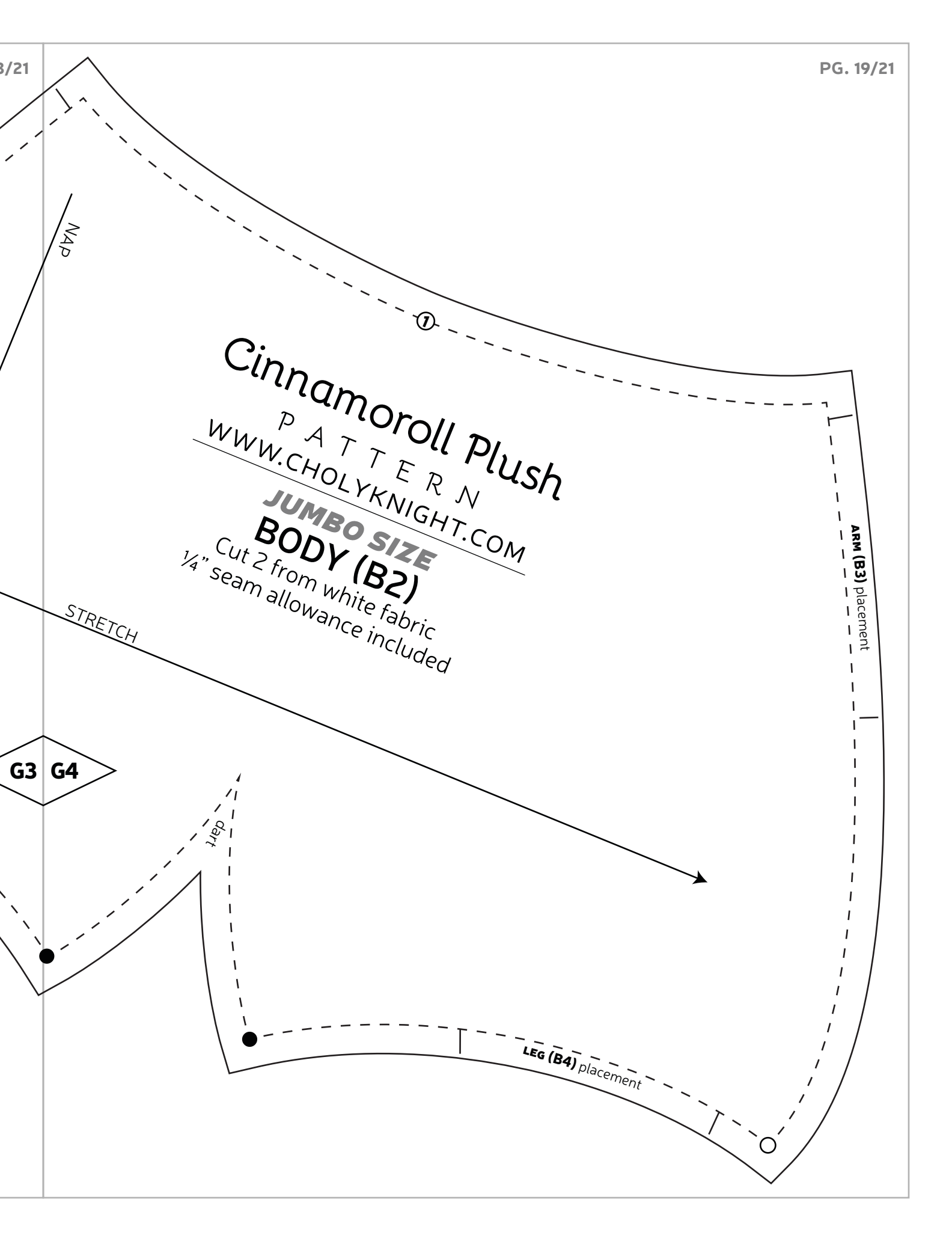
STRETCH

ARM (B3) placement

LEG (B4) placement

NAP

ST



Cinnamoroll Plush

P A T T E R N

WWW.CHOLYKNIGHT.COM

JUMBO SIZE

BODY (B2)

Cut 2 from white fabric
1/4" seam allowance included

STRETCH

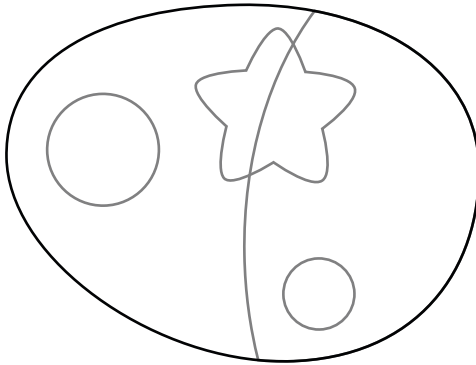
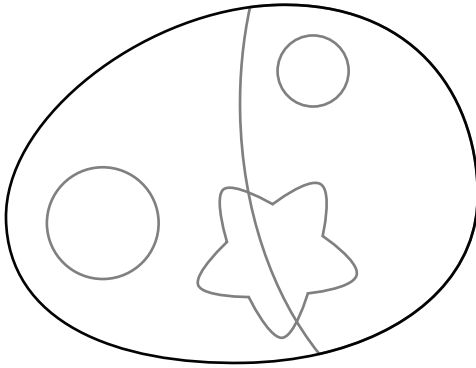
G3 G4

dart

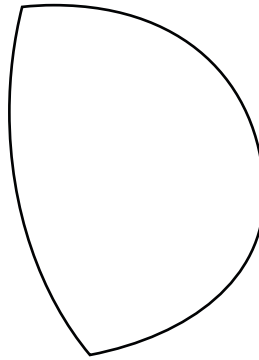
ARM (B3) placement

LEG (B4) placement

EYES
applique
 trace & cut 1 each
 from medium blue



EYE HIGHLIGHTS
applique
 trace & cut 1 each
 from light blue



EYE SHINES
applique
 trace & cut 2 each
 from white

