

FURRET

LONG BODY CUDDLE PLUSH

SEWING PATTERN
HACK



a free sewing pattern by



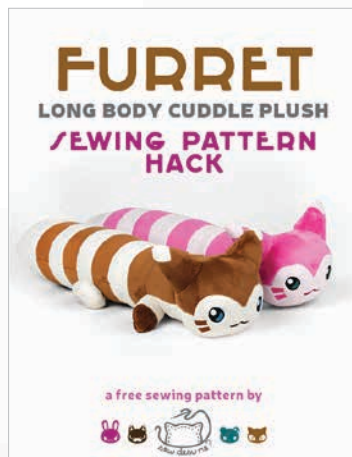
FURRET PLUSH PATTERN HACK

This pattern hack is meant to work alongside my **LONG BODY CUDDLE PLUSH SEWING PATTERN**. It is a set of extra templates that replaces the head, arms, and feet from the **CHESHIRE CAT** version of the pattern. With those together you can create the adorably long striped ferret-inspired Pokemon, Furret!

In these instructions you'll find a guide for sewing the new head, arms, and feet and how they're incorporated into the **CHESHIRE CAT** design.



+



=



NEW: tail



arms & feet are attached by hand



NEW: arms & feet



NEW: head & ears



sew desu ne?

| WWW.CHOLYKNIGHT.COM |

DIFFICULTY:

Furret's new head has a lot of difficult curves and points, so take your time to line things up carefully and use a lot of pins. However the body of the plush is easier than the original.

SKILLS USED:

- Fusible web applique
- Curved sewing
- Ladder stitch
- Sewing small pieces
- Matching notches and points
- Darts

MAKES:

ONE PLUSH: About 30" long from front of face to tip of tail, 6" wide from each side of body, and 4½" tall from bottom to top of head, 6" tall if you include the ears.

MATERIALS & TOOLS:

- ⅓ yd. of brown fabric for main body
- ⅓ yd. of cream fabric for accents
- 3" x 3" of black applique fabric for eyes and mouth
- 3" x 3" of pink applique fabric for paw pads
- 2" x 2" of blue applique fabric for eye highlights
- 2" x 2" of white applique fabric for eye shines
- 2" x 2" of brown applique fabric for whiskers
- 5" x 5" of light or heavy duty fusible web
- poly-fil stuffing
- basic sewing tools (sewing machine, scissors, iron, needles, pins, fabric marker, seam ripper)

FUSIBLE WEB:

- Fusible web adhesive is a sheet of adhesive with a paper backing.
Not to be confused with fusible interfacing, which is adhesive attached to a fabric/fiber backing.
- Some common brands are **Pellon** & **HeatnBond**
- In countries outside the US, it may also be known as **bondaweb**
- It comes in **light** and **heavy duty** varieties. Lightweight strength is meant for applique you intend to sew later. Heavy duty versions are for a no-sew bond. If you try to sew them later your machine might have trouble penetrating the glue.

APPLIQUE FABRICS:

- Good applique fabrics include **flannel, cotton, felt, minky**, and **fleece**.
- Flannel and cotton are best for detailed applique with a lot of layers because they're thinner. Meanwhile felt, minky, and fleece are better for simpler applique like body markings.
- **Flannel** is used in the example instructions (page 7).



lightweight fusible



heavyweight fusible

sew desu ne?

| WWW.CHOLYKNIGHT.COM |

FABRIC CUTTING GUIDE:

Follow the cutting guide below for what colors to cut from the pattern pieces from the **CHESHIRE CAT** version of the **LONG BODY CUDDLE PLUSH PATTERN**. On the left are the original pieces, then on the right are the new pattern hack pieces for the new head, arms, and feet. The new pieces have the same number as the original, but a new letter: **FR FOR FURRET**. For example the **LOWER FACE (B10)** have been changed to **FR10 FOR FURRET**.



PATTERN LABEL	NAME	COLOR
---------------	------	-------

ORIGINAL PATTERN PIECES

B3a	FRONT STRIPE 1	BROWN
B3b	FRONT STRIPE 2	CREAM
B3c	FRONT STRIPE 3	BROWN
B3d	FRONT STRIPE 4	CREAM
B3e	FRONT STRIPE 5	BROWN
B3f	FRONT STRIPE 6	CREAM
B3g	FRONT STRIPE 7	BROWN
B6a	BACK STRIPE 1	BROWN
B6b	BACK STRIPE 2	CREAM
B6c	BACK STRIPE 3	BROWN
B6d	BACK STRIPE 4	CREAM
B6e	BACK STRIPE 5	BROWN
B6f	BACK STRIPE 6	CREAM
B6g	BACK STRIPE 7	BROWN

PATTERN LABEL	NAME	COLOR
---------------	------	-------

PATTERN HACK PIECES

FR1	FOREHEAD	BROWN
FR2a	EAR	BROWN
FR2b	EAR TIP	CREAM
FR4	PAW	BROWN
FR7	ARM	CREAM
FR8	FOOT	CREAM
FR9a	UPPER HEAD BACK	BROWN
FR9b	LOWER HEAD BACK	CREAM
FR10	LOWER FACE	CREAM
FR12	UPPER BELLY	CREAM
FR13	FRONT TAIL	CREAM
FR14	UPPER BACK	BROWN
FR15	BACK TAIL	CREAM

sew desu ne?

| WWW.CHOLYKNIGHT.COM |

fabric comparison:



SUGGESTED MAIN FABRICS:

MINKY OR FLEECE

Medium weight, plush fabrics with about 20%-30% stretch along the crosswise grain work best for this project. The varieties shown to the left are some good options and names to look for. Try to avoid heavyweight versions of fleece that are intended for outdoor apparel or they may cause trouble for the detailed areas.

You can also use non-stretch fabrics (such as felt), but be aware that the curves will be more difficult to sew and the result will look different. The plush will become more elongated and the edges will look sharper.

10" of minky
stretches to 13"
= 30% stretch



MINKY

VS.

FELT



sew desu ne?

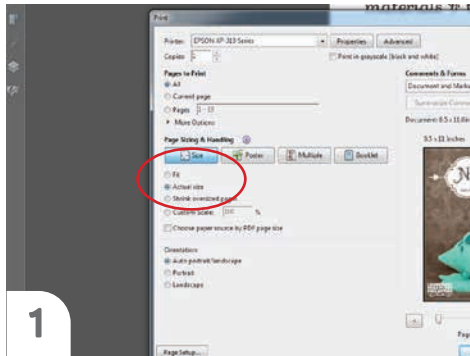
| WWW.CHOLYKNIGHT.COM |

PRINTING THE PATTERN:

Set your computer to print **PAGE 24-29.**

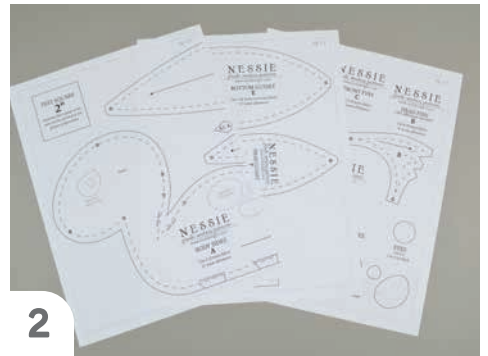
If you're unfamiliar with printing and assembling a .pdf pattern, read the steps to follow.

For the best results, use a .pdf reader like **ADOBE READER**. That's what is shown here and will give you the most control over the settings.



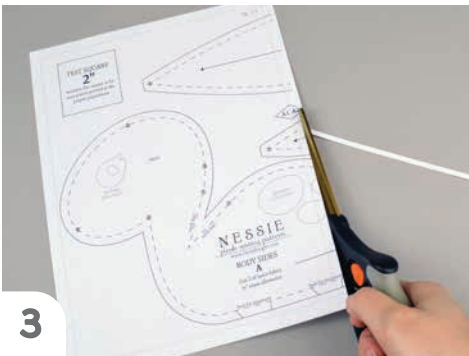
1

At the print dialog box, check the box that says print at "Actual Size" or 100%. Any other selection (such as "Fit to page") will distort the pattern so it's slightly larger or smaller and we don't want that.



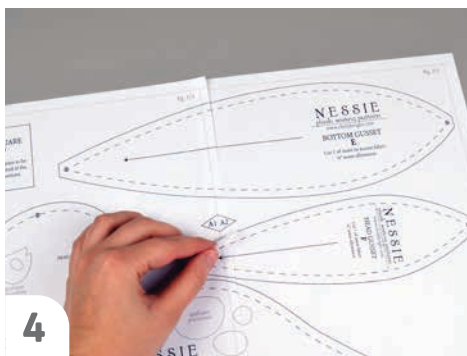
2

Print the pages needed for the file. You might have one or more. Either way, be sure you have the full collection by noting the page numbers in the corner.



3

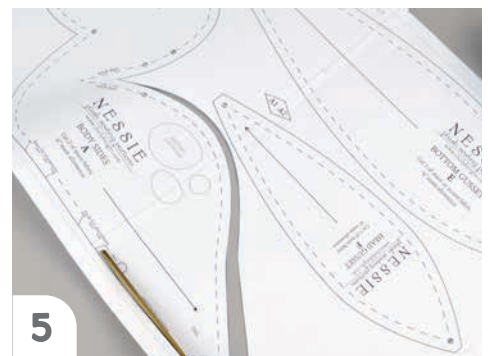
It's likely your printer will have a margin that ensures your image doesn't print to the very edge. Assembly will be easier if you trim off this blank margin edge. This will give you pages that overlap slightly during assembly. If you trim across the gray outline boxes, this will give you pages that don't overlap but rather butt against each other.



4

To line up the pattern pages, match up the corresponding diamond shapes. Each diamond will have a letter, so it's simply a matter of matching A1 to A2, B3 to B4 and so on. The faint gray lines indicate the border of every page, you should be able to line those up as well. When the diamond goes together, tape it in place.

If you have many pages, it's easier to tape up the pages into rows first. Then tape the rows together into a full block.



5

You can trace the patterns onto a different paper, or you can also just cut them straight from the printer paper -- be sure that each piece is fully taped together along the joins so they don't fall apart when you cut them.

sew desu ne?

| WWW.CHOLYKNIGHT.COM |

BEFORE YOU BEGIN:

- Briefly read the project instructions so you know what to expect.
- If desired, mark the cut fabric pieces with the markings and symbols from the pattern. Or wait until the applicable step before transferring.
- Note that a ¼" seam allowance is used throughout the project, which is included in the pattern templates.



Use the new applique templates found on page 13 to replace the face from the original **LONG BODY CUDDLE PLUSH PATTERN**.

1. FUSE THE EYE APPLIQUE



- Grab your fusible web and applique templates. Trace the pieces for the eyes, mouth, and whiskers. You should have:
 - **eyes** (2, black)
 - **eye shines** (2, white)
 - **eye highlights** (2, blue)
 - **mouth** (1, black)
 - **whiskers** (4, brown)
- Fuse the bumpy (adhesive) side of the fusible web onto the applique fabrics.
- Cut out your applique pieces and grab your **LOWER FACE** piece (FR10). Grab the **eye** applique piece. Set your paper pattern on top of the lower face piece. Align the applique piece on top where the placement markings are. Next, carefully pull the paper pattern away while holding the applique piece in place.
- Fuse the first applique layer with your iron. Use a press cloth, such as a scrap piece of cotton. This will help protect any polyester for fuzzy fabrics from melting or scorching.



sew desu ne?

| WWW.CHOLYKNIGHT.COM |



2. SEW THE EYE APPLIQUE

- Next add the **eye highlights and eye shines** using the paper pattern and photo as a guide.
- Next add the **mouth**. Use the paper pattern and photo as a guide like before.
- And lastly add the **whiskers**. This should complete all the pieces for the face.

3. ADD THE PAW PADS

- Also take this time to add the paw pads to two of your **PAWS** (FR4) and **FEET** (FR8). Follow the same steps as before, tracing the design and fusing it to your main fabrics.

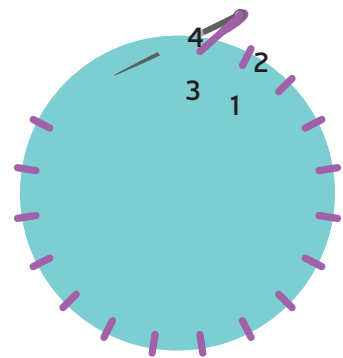
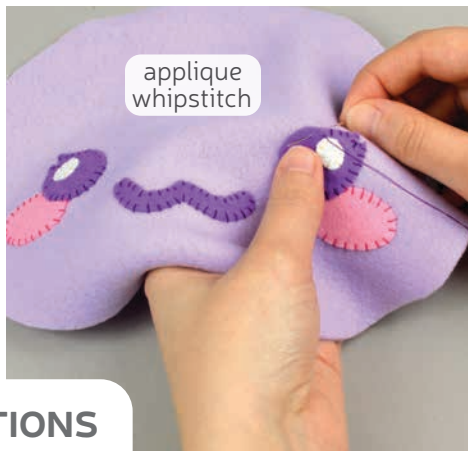
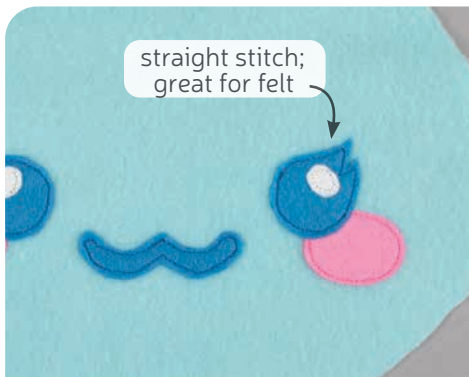
If you used heavy duty fusible web, you can keep the pieces fused without sewing, or you can sew them in place a number of ways. I've used a zigzag stitch here.

→ **Refer to the next page for some other applique options.**



sew desu ne?

| WWW.CHOLYKNIGHT.COM |



3. OTHER APPLIQUE OPTIONS

- Other good options for applique include a straight stitch, which involves sewing around the edge of the applique pieces with a straight stitch using matching thread -- about 1/8" in from the edge.
- You can also applique by hand; I prefer a whipstitch. Thread a hand-sewing needle with some matching thread and knot it. Bring the thread up from the back of the project; about 1/8" in from the edge of the applique shape. Bring it down perpendicular from the curve, just outside of the applique shape. This completes one stitch.
- For the next stitch, bring the needle back up about 1/8" away from the previous stitch and 1/8" in from the edge just as in the first stitch. Once again, bring it down just outside the applique shape. Continue this way until you've sewn around the shape.



4. CENTER THE FOREHEAD

- Grab your **FOREHEAD** (FR1) and **LOWER FACE** pieces (FR10). These pieces will be joined together along the curved edges above the eyes. Because the shapes are especially tricky, they're labeled with **numbered points** for help with alignment, and we'll go over each part bit by bit. Look out for **points 8, 2, and 3**.
- Start by grabbing your forehead piece and flipping it so it's right sides facing with the lower face. Match up **point 8** at the middle corner. Pin the fabrics at this point.
- Sew the forehead to the lower face at **point 8** only. This will keep this point nicely centered for future steps.

sew desu ne?

| WWW.CHOLYKNIGHT.COM |

5. SEW THE EYE CURVE



- a.** Next we're going to join the **FOREHEAD** (FR1) to the **LOWER FACE** (FR10) around the first eye curve. This will line up **point 2** at the corner on the other side of the eye. This will require bending your forehead fabric around the curve.
- b.** If you have trouble getting your fabric to bend, you can make small clips into the seam allowance along the inner curve. Clip about 1/8" into the seam allowance about 1/4" apart all along the edge.

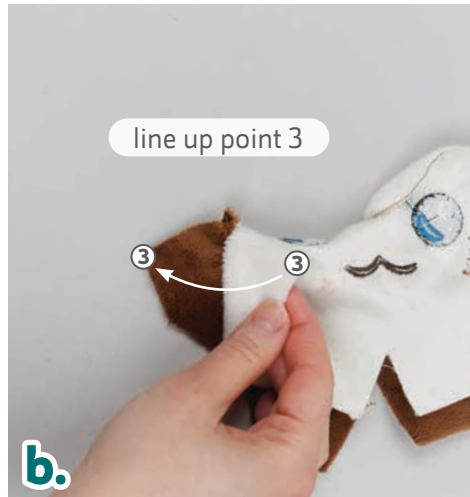


- c.** This will allow the inner curve to spread apart so now it can stretch around the eye. Line up the edges of the forehead with the lower face from **point 8 to 2**. Make sure right sides are facing and pin the edges together.
- d.** Sew the forehead to the lower face from **point 8 to 2**.

sew desu ne?

| WWW.CHOLYKNIGHT.COM |

6. SEW THE FACE SIDES



- a. Up next is to attach the **LOWER FACE** to the **FOREHEAD** from **point 2 to 3**. This makes a sharp corner, so your fabric will need to bend some more. To make this easier, make a clip into the seam allowance of your lower face fabric at **point 2**.
- b. You can now use this clip to bend your lower face fabric at the sharp corner. Bend it so **point 3** matches up at the outer corner.
- c. Sew the lower face to the forehead from **point 2 to 3**.

- d. Now one half of the face should be complete. You can check your seams to make sure they look smooth and even from the other side. If they look a little wobbly, you can usually stitch over them again to make the line a little smoother.
- e. Now repeat steps 5 and 6 on the other side of the face and this should fully attach the forehead to the lower face.



sew desu ne?

| WWW.CHOLYKNIGHT.COM |



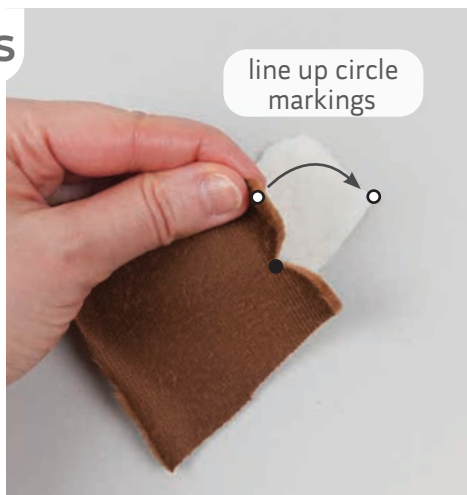
Refer to step 11 from the original **LONG BODY CUDDLE PLUSH PATTERN** to sew the darts for the **LOWER FACE** (FR10) and **FOREHEAD** (FR1). Refer to the original for more detailed instructions, but below shows a brief overview.

7. SEW THE FACE DARTS

- Sew the three lower face **darts**.
- Sew the upper middle **dart** on the forehead.
- There should be four **darts** total.



8. ATTACH THE EAR TIPS



- Grab your **EAR** (FR2a) and **EAR TIP** pieces (FR2b). These pieces will join together along the V-shaped inner corners to create the full ear shape. But there are also **pattern markings** for extra help with alignment. Look out for the **open and filled circle markings**.
- Start by taking your ear piece and flipping it over so now it's right sides facing with the ear tip. Align one edge so the **circle markings** match up. The **open circle marking** will align at the top of the V shape, and the **filled circle marking** will align at the bottom of the V shape.
- Sew the ear to the tip between the **circle markings**.

sew desu ne?

| WWW.CHOLYKNIGHT.COM |

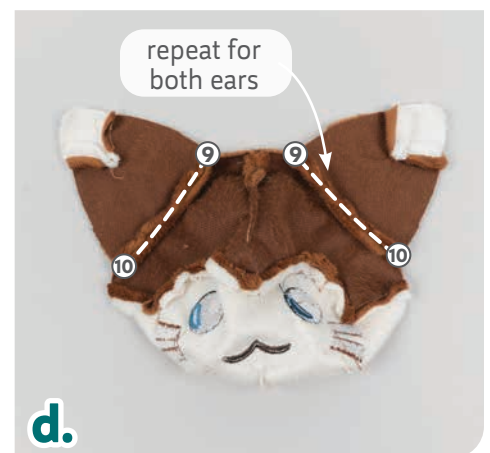
9. FINISH THE EAR TIPS

- a. Now grab the other side of your **EAR** and align the other open **circle marking**. You may need to make a clip into the seam allowance of the ear fabric so this corner bends easier.
- b. Sew from the **filled circle marking** to the **open circle marking** to complete the V-shape. Repeat this three more times so you have four ears total -- two for the front and two for the back.



10. ATTACH THE FRONT EARS

- a. Grab two of your sewn **ears** as well as your **head front** so far. We're going to attach the ears along the inner curves of the head front, but you can also refer to the **numbered markings** for help with alignment. Look for **points 9 and 10**.
- b. Flip over your head front so now it's right sides facing with the ear. **Line up points 9 and 10** at the corners. Pin the fabrics together along the edges.
- c. Sew the forehead to the ear from **point 9 to 10**.
- d. Repeat this with another one of your ears on the other side of the forehead.



sew desu ne?

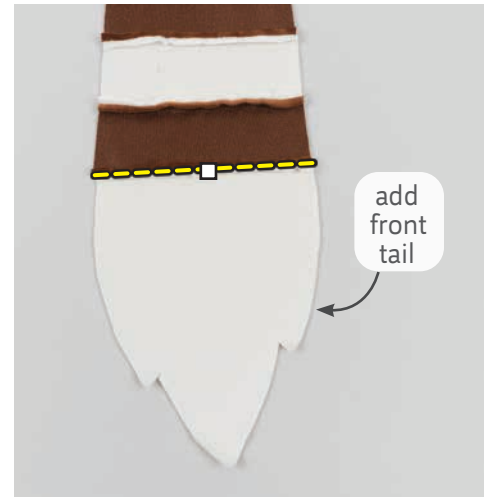
| WWW.CHOLYKNIGHT.COM |



Refer to steps 19-20 from the **CHESHIRE CAT** variation of the **LONG BODY CUDDLE PLUSH PATTERN** to sew the front half of the body. Refer to the original for more detailed instructions, but here is a brief overview:

- **STEP 19:** assemble the front stripes into a column.
- **STEP 20a -c:** attach the **UPPER BELLY** (FR12).
- **STEP 20d-f:** sew attach the **FRONT TAIL** (FR13) as if it was the lower belly.

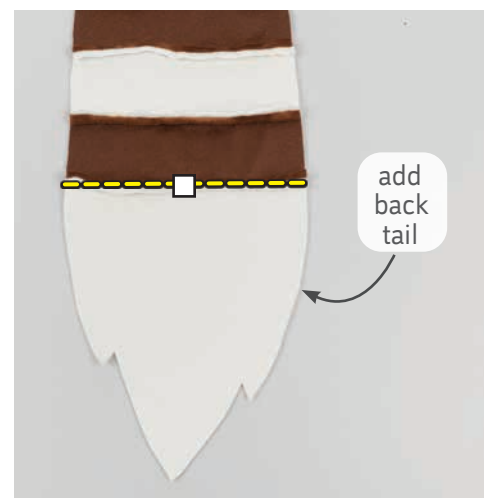
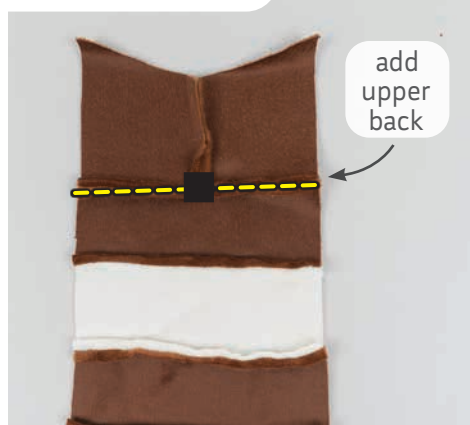
11. SEW THE FRONT HALF OF THE BODY



Refer to steps 26 through 28, and 31 from the **CHESHIRE CAT** variation of the **LONG BODY CUDDLE PLUSH PATTERN** to sew the back half of the body. Refer to the original for more detailed instructions, but here is a brief overview:

- **STEP 26:** assemble the back stripes into a column.
- **STEP 27-28:** sew the **UPPER BACK** (FR14).
- **STEP 31a-c:** attach the **UPPER BACK** (FR14).
- **STEP 31d-f:** sew attach the **BACK TAIL** (FR15) as if it was the lower back.

12. SEW THE BACK HALF OF THE BODY



sew desu ne?

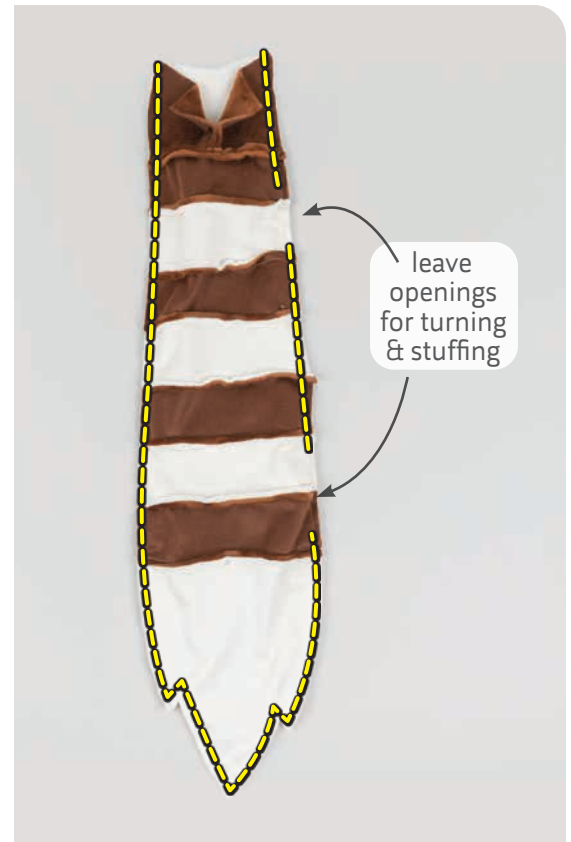
| WWW.CHOLYKNIGHT.COM |

13. SEW THE BODY FRONT TO THE BACK

- a.** Grab the **FRONT** of the body you assembled in step 11 as well as the **BACK** of the body you assembled in step 12. Align the pieces together with right sides facing and the raw edges matching up.

This step is similar to attaching the body and belly from the original **LONG BODY CUDDLE PLUSH PATTERN** (shown in steps 34-41), however you skip over all the arms and legs so it's much simpler.

Leave the neck open for the head back next. Also leave an **opening for turning** near the neck, and another opening for stuffing near the tail end (as marked on the paper pattern).



14. SEW THE UPPER & LOWER HEAD BACK

- a.** Grab your **UPPER** and **LOWER HEAD BACK** pieces (F9a & F9b). We're going to join these pieces so they make one full head back piece. They're joined together along the middle edges, but you can also find the **numbered points** for help with alignment. Look for **point 7**. Align the lower head back with the upper head back along the edge with **point 7**. Make sure right sides are facing and pin the fabrics together.



- b.** Sew the head back pieces along the edge with **point 7**. Repeat this with your other head back pieces for both sides.

sew desu ne?

| WWW.CHOLYKNIGHT.COM |



15. ATTACH THE BACK EARS

- Grab your remaining sewn **EARS** from before as well as your **HEAD BACK** pieces. We're going to attach the ears along the inner curves of the upper head back, but you can also refer to the **numbered markings** for help with alignment. Look for **points 9 and 10**.
- Flip over your head back so now it's right sides facing with the ear. Line up **points 9 and 10** at the corners. Pin the fabrics together along the edges.
- Sew the head back to the ear from **point 9 to 10**. Repeat this with the other ear on the other head back piece.



Refer to step 43 from the original **LONG BODY CUDDLE PLUSH PATTERN** to sew the back head. Refer to the original for more detailed instructions, but here is a brief overview:

16. SEW THE HEAD BACK PIECES

- Sew the lower head back pieces together from **point 6 to 4**.



sew desu ne?

| WWW.CHOLYKNIGHT.COM |



Refer to steps 44-45 from the original **LONG BODY CUDDLE PLUSH PATTERN** to attach the head back to the neck. Refer to the original for more detailed instructions, but here is a brief overview:

17. ATTACH THE HEAD BACK

- **STEP 44:** open up the neck edge and attach one side of the head back from **point 5** to **6**.
- **STEP 45:** attach the other half from **point 5** to **6**. This should completely attach the head back.



Refer to step 46 from the original **LONG BODY CUDDLE PLUSH PATTERN** to sew the back neck area. Refer to the original for more detailed instructions, but here is a brief overview:

18. SEW THE BACK NECK

- a. Sew the top of the head back all the way down the neck to your previous stitching. This should go from **point 1**, through **point 5**, down to the stitching along the back of the neck.



sew desu ne?

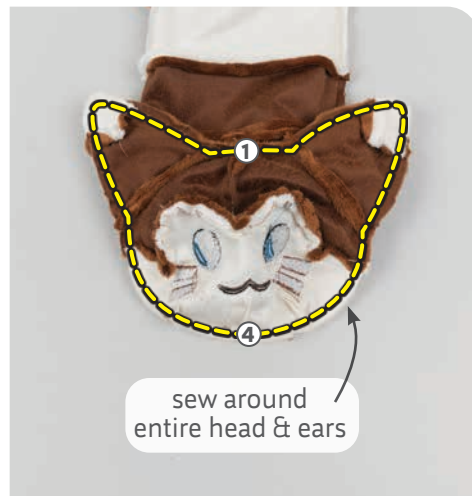
| WWW.CHOLYKNIGHT.COM |



Refer to step 47 from the original **LONG BODY CUDDLE PLUSH PATTERN** to attach the head front. The process here differs slightly because Furret does not have ears that are sewn into the seam.

19. ATTACH THE HEAD FRONT

- Align the **HEAD FRONT** with the **HEAD BACK**, matching up **point 1** at the center top and **point 4** at the center bottom. The ear seams at **points 9 and 10** should also match up. Make sure right sides are facing and pin the fabrics together.
- Sew the head front to the head back going all the way around the head and each ear.



20. CLIP & TURN THE PLUSH

- The body is now nearly ready to turn right side out. Before turning, it helps to clip the seam allowances at any tight corners and curves. This will allow these corners to turn more cleanly when the piece is flipped. This is especially helpful around the tips of the tail and where the ears meet the head.
- Finally, turn the body right side out through the **opening for turning**.
- Begin stuffing the plush, starting by getting small bits of stuffing in the tips of the tail so they stay looking pointy and don't deflate later with use.

sew desu ne?

| WWW.CHOLYKNIGHT.COM |

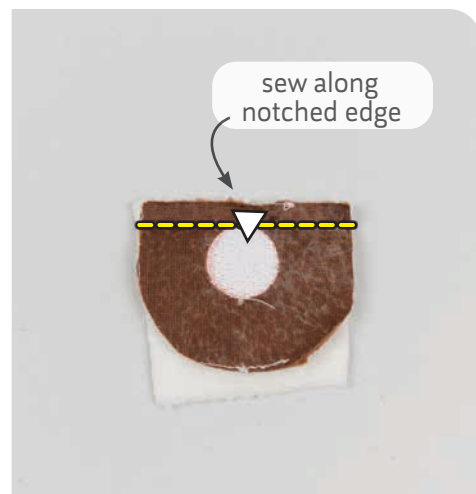
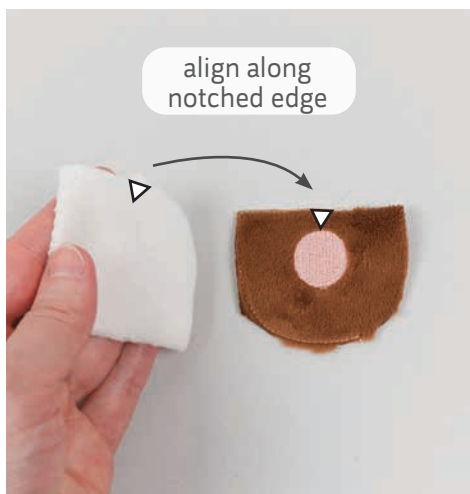


21. STUFF THE PLUSH

- Get plenty of stuffing in the plush at the tips of the ears. This will ensure they stay looking pointy and don't flatten over time.
- Continue stuffing the body of the plush as full or as loosely as you like. Since it's meant for cuddling, using slightly less stuffing with result in a floppier, more cuddly plush. Utilize the different **openings for stuffing** to reach each area better and get a smoother, more consistent result.
- Ladder stitch the openings closed. Refer to step 50 from the original **LONG BODY CUDDLE PLUSH PATTERN** for extra help with a ladder stitch.

22. ATTACH THE PAWS

- Grab your **FURRET ARM** and **PAW** pieces (FR4 and FR7). These pieces will join together along the straight edges to create the full arm. But you can also look for the **notch markings** for help with alignment. Align one arm with one paw along the **notched edges** so right sides are facing. Pin the edges together.
- Sew the paw to the arm along the **notched edge**. Repeat this with your remaining arm and paw pieces and you should have four sewn pieces total.



sew desu ne?

| WWW.CHOLYKNIGHT.COM |



23. SEW THE ARMS

- Grab your sewn **ARM** pieces. Take one with a paw pad attached and one blank one. Align them with right sides facing and the raw edges matching up. Pin the fabrics together.
- Sew the pieces together along the curved edge. Leave the straight edge free for turning the piece right side out.
- Turn the piece right side out, then repeat this step with your remaining arm pieces for two sewn arms total.

24. STUFF & CLOSE THE ARMS

- Stuff the arms semi-firmly with stuffing.
- Tuck in the seam allowances of the arms, then loosely ladder stitch them closed. You can use a long basting stitch for this. It's only to keep the stuffing from spilling out before we attach the arms to the plush.



sew desu ne?

| WWW.CHOLYKNIGHT.COM |



25. SEW THE FEET

- Grab your **FEET** pieces (FR8). Take one with an applied paw pad and one blank foot. Align them with right sides facing and the raw edges matching up.
- Sew the feet together completely around the shape.
- To turn the foot, make a cut through the blank fabric only. Cut a short slit centered around the base of the foot. Though you can also find a **cutting guide** on the paper pattern for help. Repeat this with your other foot pieces for two feet total.

26. TURN & STUFF THE FEET

- Turn the feet right side out through the opening that you cut.
- Stuff the feet semi-firmly with stuffing through the openings.



sew desu ne?

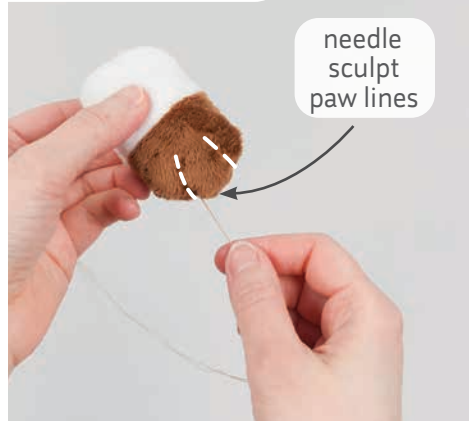
| WWW.CHOLYKNIGHT.COM |



Refer to steps 52-54 from the original **LONG BODY CUDDLE PLUSH PATTERN** to needle sculpt the arms and feet. Refer to the original for more detailed instructions, but here is a brief overview:

27. NEEDLE SCULPT THE ARMS & FEET

- Transfer the **needle sculpting lines** from the paper pattern for the **PAW** (FR4). Take stitches through the paw and allow the thread to wrap around the end of the paw to cinch it and make little 'finger' lines. Repeat for both lines. Then repeat again for both paws.
- Repeat this again for both **FEET** (FR8).



28. ATTACH THE ARMS

- Grab your plush body as well as your sewn arms. Flip the plush so it's belly facing up and align the ladder stitched end of your arm into the corner between the **UPPER BELLY** (FR12) and the **FIRST STRIPE** (B3a). Make sure the paw pads are facing up as well.
- Ladder stitch the arm to this corner of the belly. Sew along the end of the arm for the front side.
- Then flip the arm down and stitch along the back side for a very secure hold. If you sew a little higher up, this will control the direction that the arm is pointing. You can use this to adjust the placement of the arm.
Repeat this for both arms for two total.

sew desu ne?

| WWW.CHOLYKNIGHT.COM |

29. ATTACH THE FEET

- a.** Grab your stuffed **FEET** pieces (FR8). Align the foot onto the middle front stripe, **STRIPE 4** (B3d). For a classic colored **FURRET**, that should be a cream stripe. For this sample, the bottom of the foot is flush with the bottom of the stripe, and the side of the foot is flush with the side seam. You can use that position as a starting point and make adjustments based on what you prefer.



- b.** Ladder stitch the foot in place by sewing around the cut you made in step 25. Repeat this with your other foot on the other side of the stripe.

CONGRATS!
This completes your plush! Now
go give it a hug!

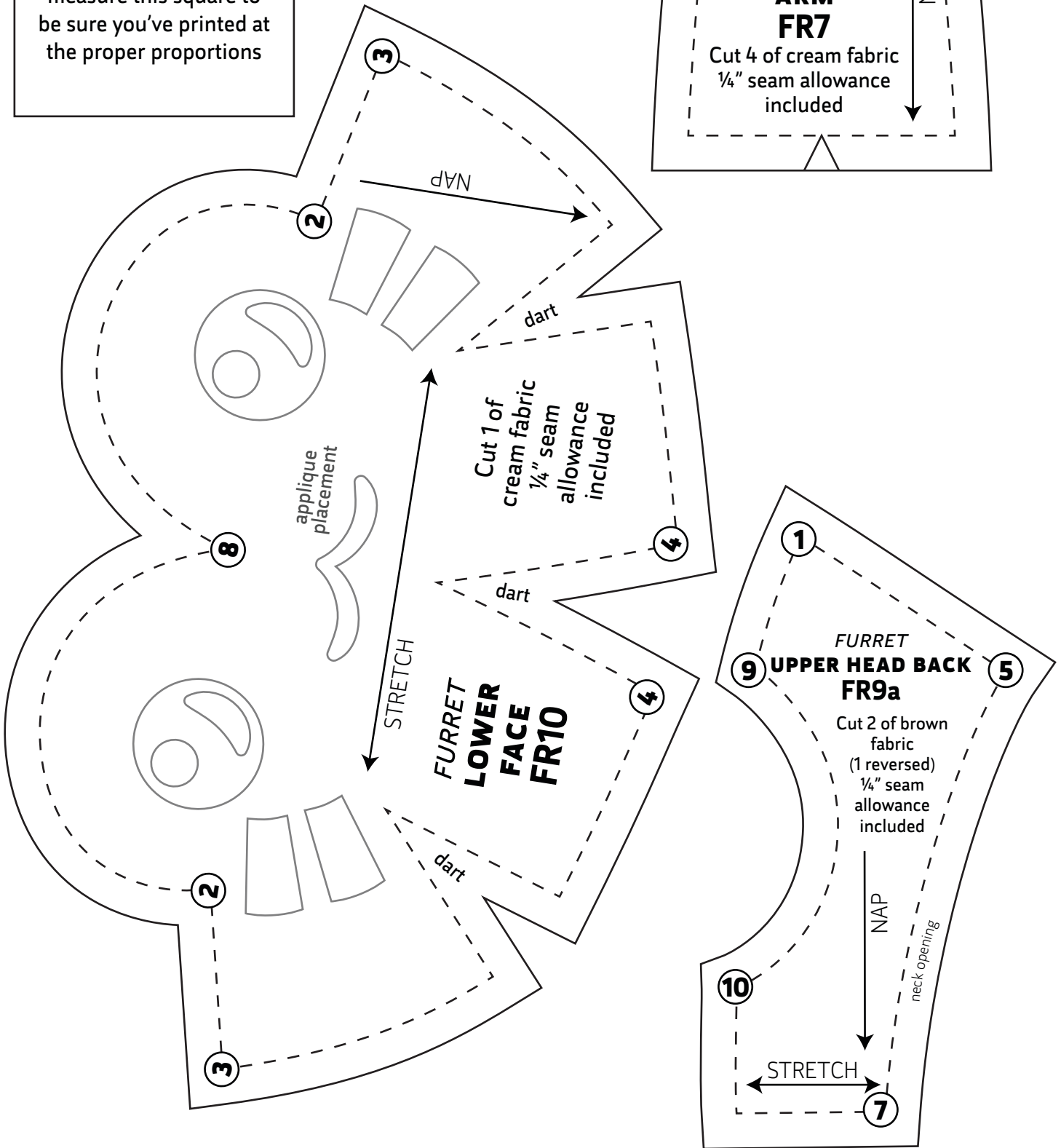


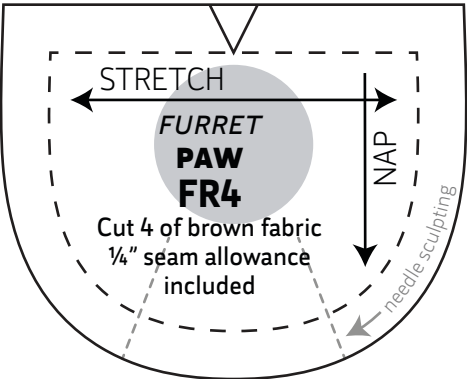
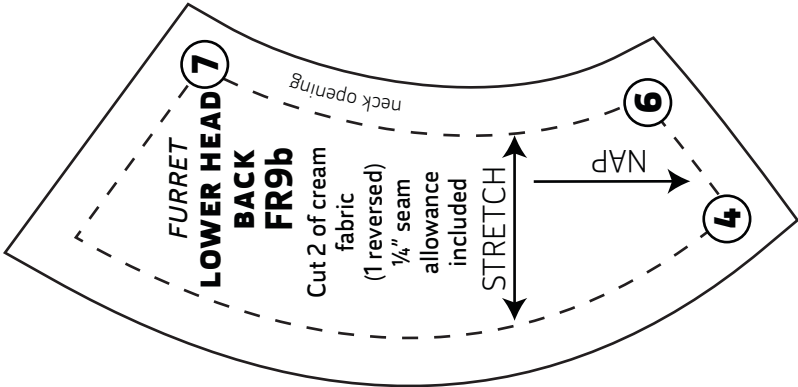
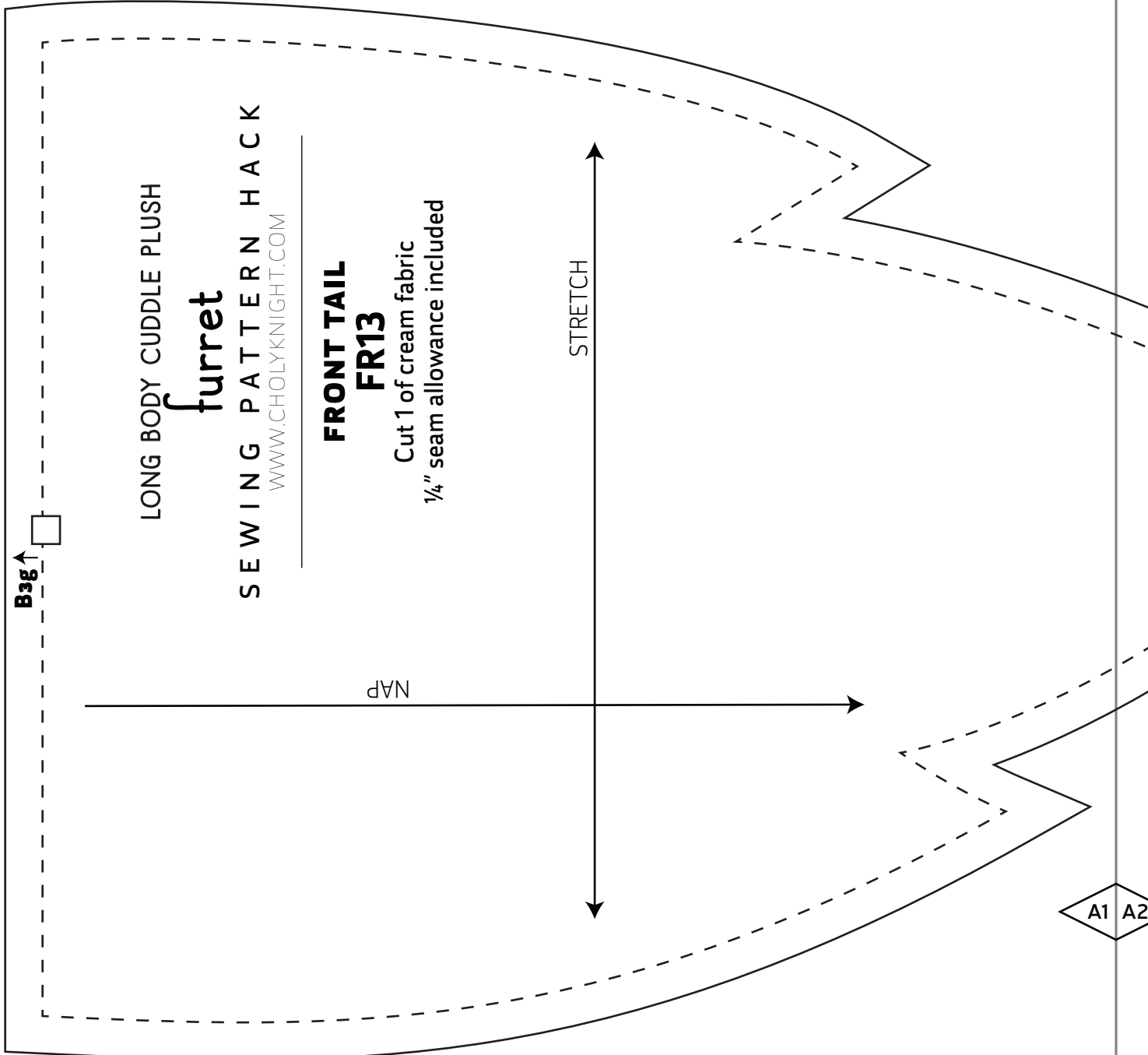
sew desu ne?

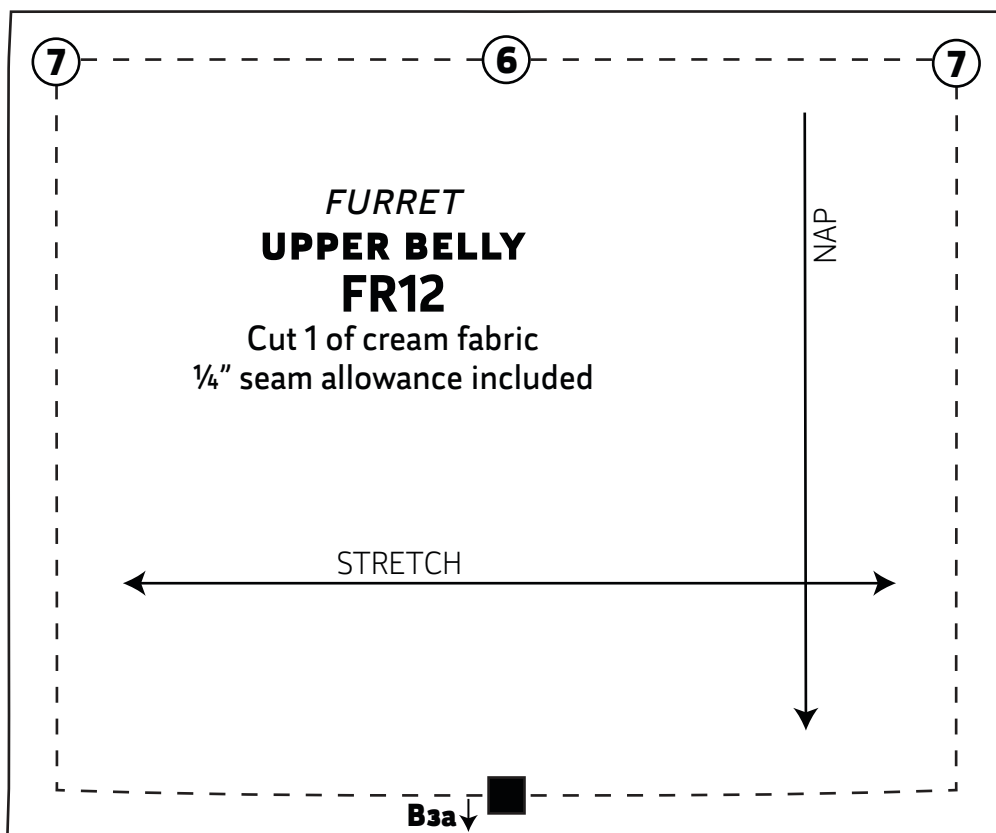
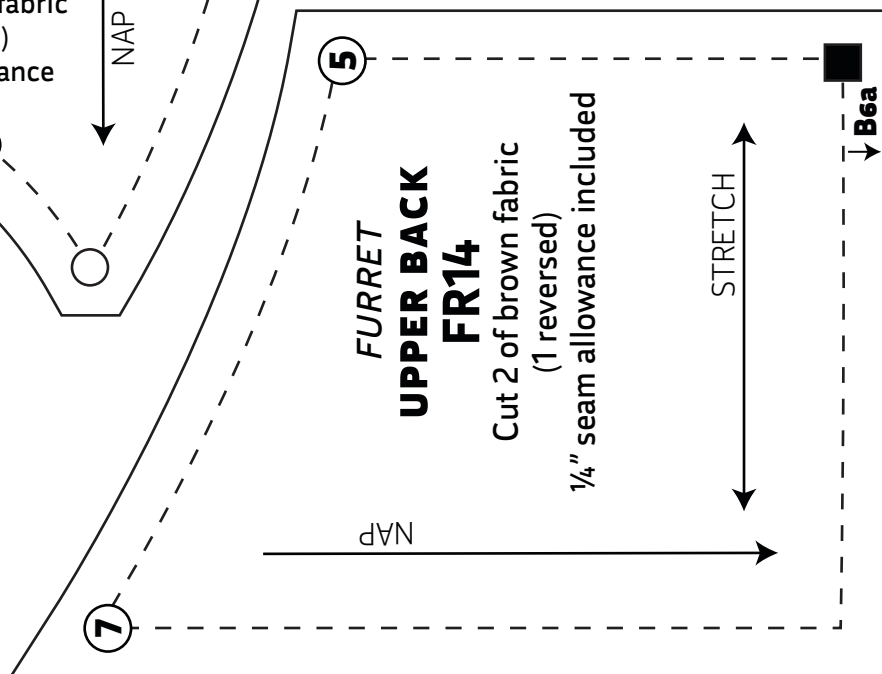
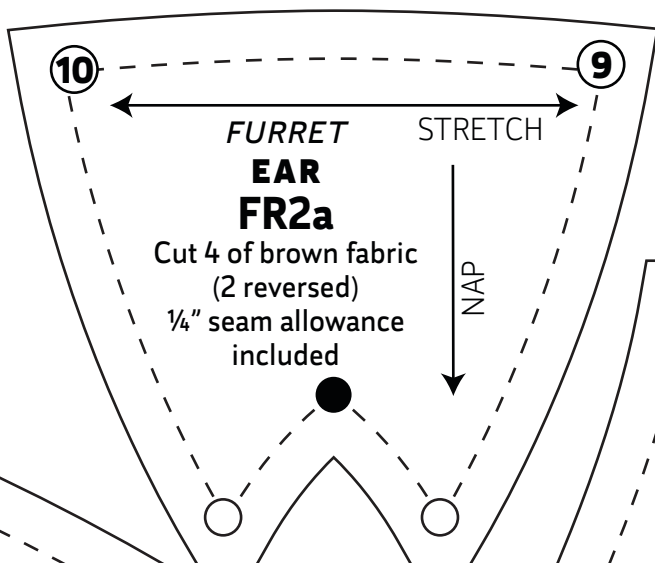
| WWW.CHOLYKNIGHT.COM |

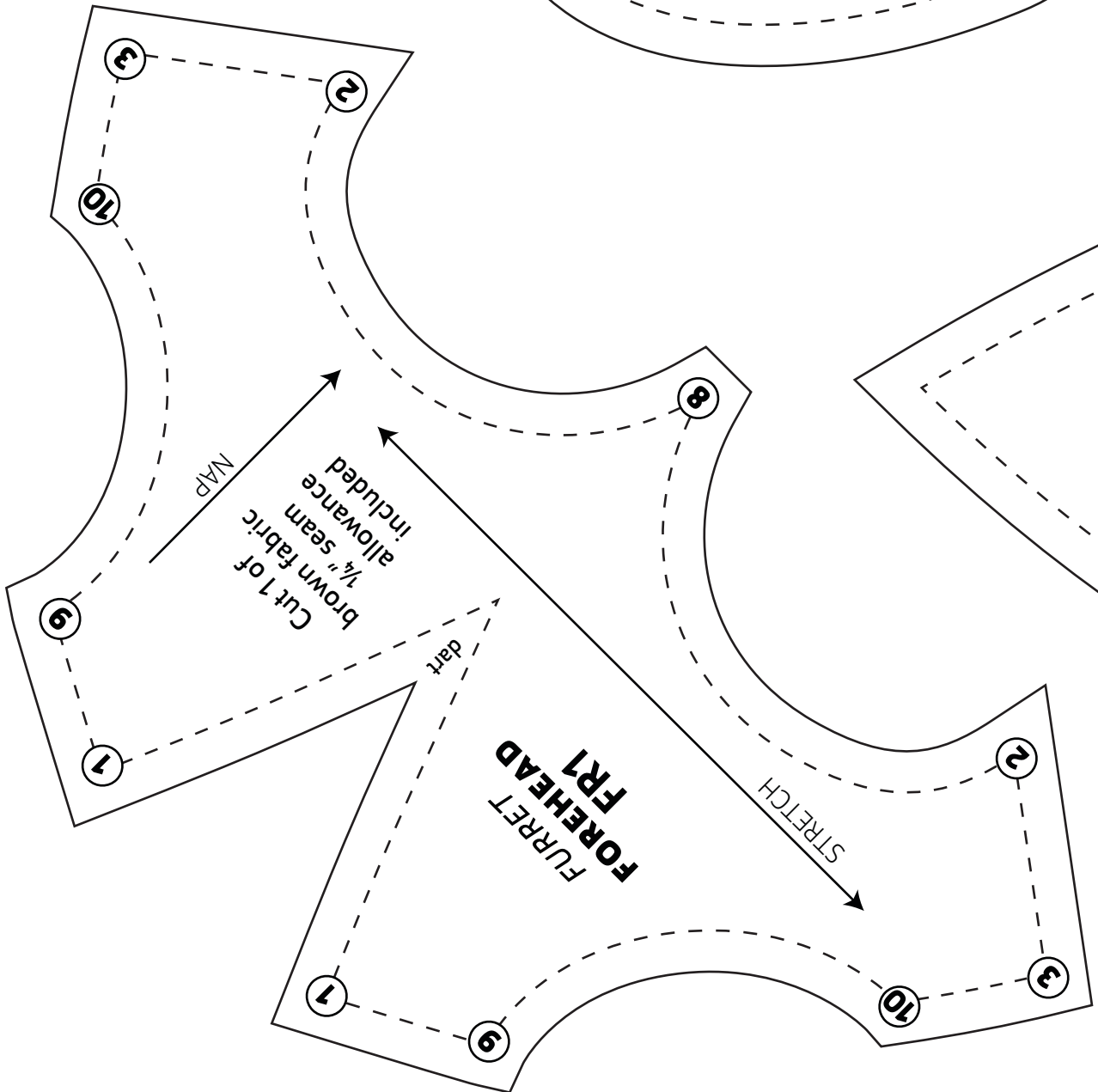
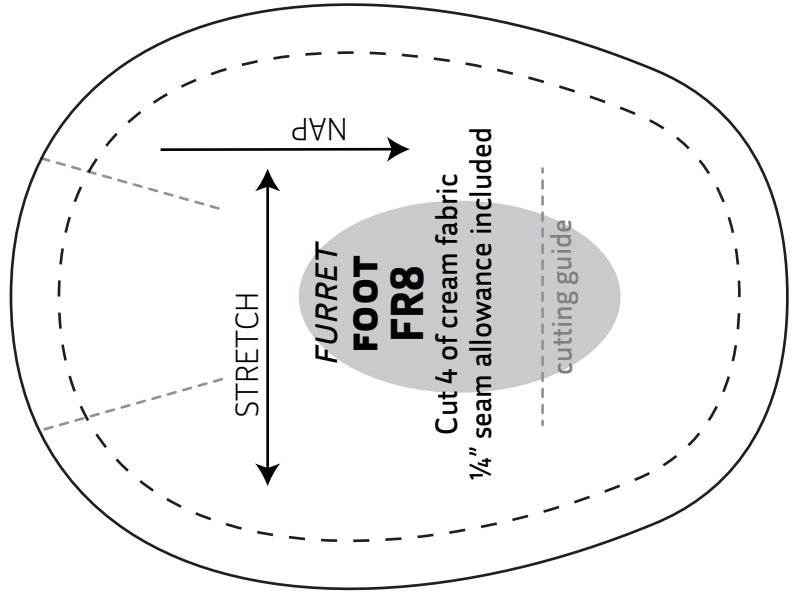
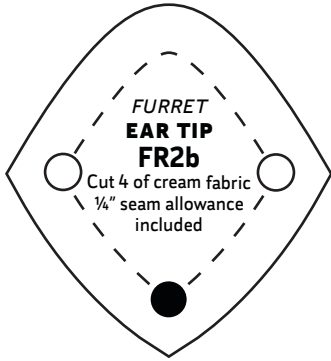
TEST SQUARE 2"

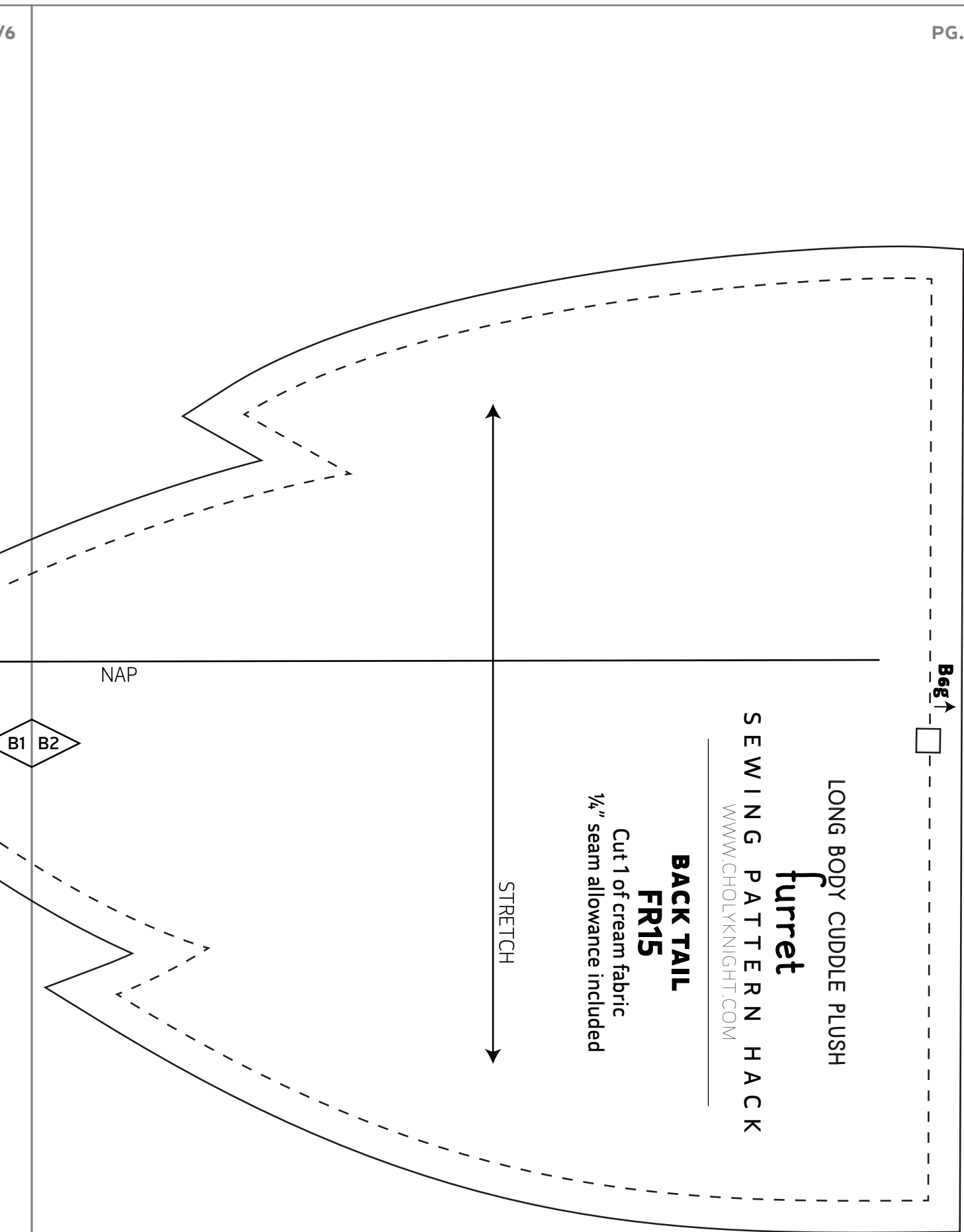
measure this square to
be sure you've printed at
the proper proportions











Bag →

LONG BODY CUDDLE PLUSH

furret

SEWING PATTERN HACK

WWW.CHOLYKNIGHT.COM

BACK TAIL
FR15

Cut 1 of cream fabric
1/4" seam allowance included

STRETCH

NAP

B1 B2

EYES

applique
trace/cut 2
of black



EYE HIGHLIGHTS

applique
trace/cut 2 of blue



EYE SHINES

applique
trace/cut 2
of white



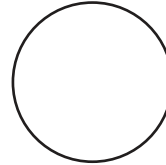
MOUTH

applique
trace/cut 1 of black



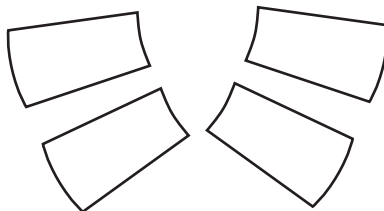
ARM PAW PAD

applique
trace/cut 2 of pink



WHISKERS

applique
trace/cut 1 each of brown



FOOT PAW PAD

applique
trace/cut 2 of pink

