

WOLF LINK PLUSH



a free sewing pattern by



WOLF LINK PLUSH

Fans of The Legend of Zelda series will hopefully recognize this distinctive wolf! This is the wolf form taken by Link in the game Twilight Princess. This version has a cute belly down pose that is great for cuddling or filling with weighted beads for a beanie feel. It has little rounded paws, a tiny muzzle, super detailed face and body markings, and eye-catching hair. He even comes with a removable shackle and chain to complete the full look from the game!

SKILLS USED:

- Fusible web applique
- Curved sewing
- Ladder stitch
- Sewing small pieces
- Matching notches and points
- Darts
- Gathering; gathering stitch

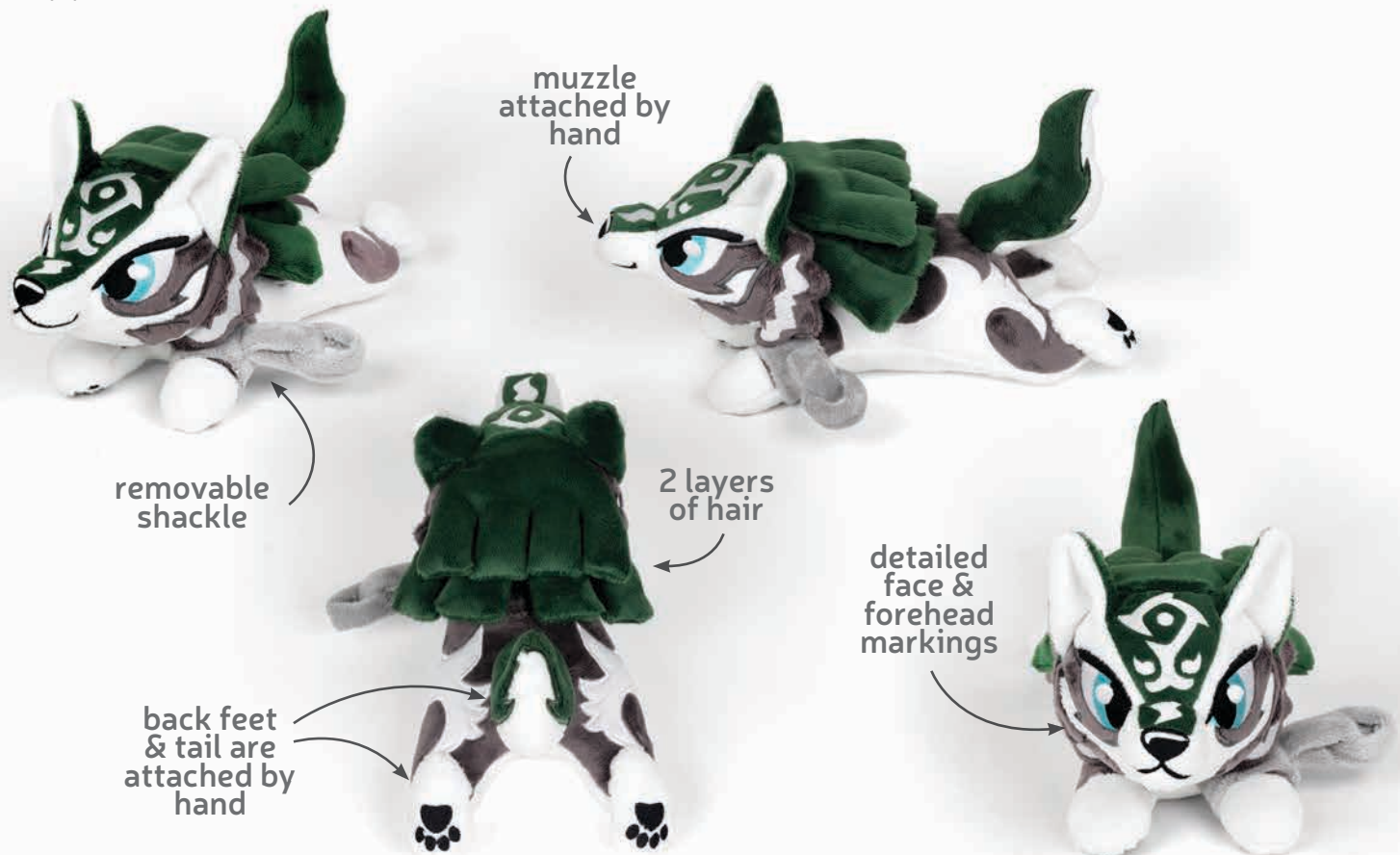
DIFFICULTY:



The most difficult part of this plush is likely all the details and hand sewing involved. Give yourself plenty of time to applique all the markings and attach all the tiny pieces.

MAKES:

ONE PLUSH: about 12" long from tip of nose to tips of feet, 5" wide from each side of back feet, and 5" tall from belly to top of head



sew desu ne?

| WWW.CHOLYKNIGHT.COM |

MATERIALS & TOOLS:

- 1/3 yd. of white fabric for head and belly
- 1/3 yd. (or 14" x 10") of dark gray fabric for body
- 1/4 yd. of green fabric for forehead and hair
- 1/8 yd. (or 10" x 4") of light gray fabric for shackle and chain
- 7" x 4" of gray applique fabric for face markings
- 7" x 7" of white applique fabric eye whites, body markings, and forehead markings
- 3" x 3" of blue applique fabric for irises
- 5" x 5" of black applique fabric for pupils, muzzle, and paws
- 6" x 7" of green applique fabric for tail fur
- 13" x 13" of light or heavy duty fusible web
- sewing thread to match main fabric and applique fabrics
- poly-fil stuffing
- basic sewing tools (sewing machine, scissors, iron, needles, pins, fabric marker, seam ripper)

FUSIBLE WEB:

- Fusible web adhesive is a sheet of adhesive with a paper backing.
Not to be confused with fusible interfacing, which is adhesive attached to a fabric/fiber backing.
- Some common brands are **Pellon** & **HeatnBond**
- In countries outside the US, it may also be known as **bondaweb**
- It comes in **light** and **heavy duty** varieties. Lightweight strength is meant for applique you intend to sew later. Heavy duty versions are for a no-sew bond. If you try to sew them later your machine might have trouble penetrating the glue.



APPLIQUE FABRICS:

- Good applique fabrics include **flannel**, **cotton**, **felt**, **minky**, and **fleece**.
- Flannel and cotton are best for detailed applique with a lot of layers because they're thinner. Meanwhile felt, minky, and fleece are better for simpler applique like body markings.
- **Flannel** is used in the example instructions (page 7).



sew desu ne?

| WWW.CHOLYKNIGHT.COM |

fabric comparison:



SUGGESTED MAIN FABRICS:

MINKY OR FLEECE

Medium weight, plush fabrics with about 20%-30% stretch along the crosswise grain work best for this project. The varieties shown to the left are some good options and names to look for. Try to avoid heavyweight versions of fleece that are intended for outdoor apparel or they may cause trouble for the detailed areas.

You can also use non-stretch fabrics (such as felt), but be aware that the curves will be more difficult to sew and the result will look different. The plush will become more elongated and the edges will look sharper.

10" of minky stretches to 13"
= 30% stretch



MINKY

VS.

FELT



sew desu ne?

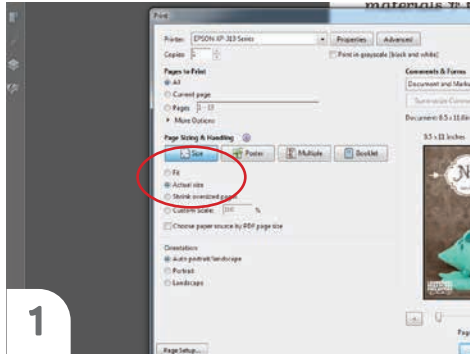
| WWW.CHOLYKNIGHT.COM |

PRINTING THE PATTERN:

Set your computer to print **PAGES 28-35.**

If you're unfamiliar with printing and assembling a .pdf pattern, read the steps to follow.

For the best results, use a .pdf reader like **ADOBE READER**. That's what is shown here and will give you the most control over the settings.



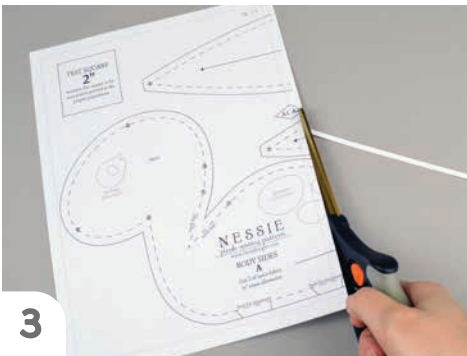
1

At the print dialog box, check the box that says print at "Actual Size" or 100%. Any other selection (such as "Fit to page") will distort the pattern so it's slightly larger or smaller and we don't want that.



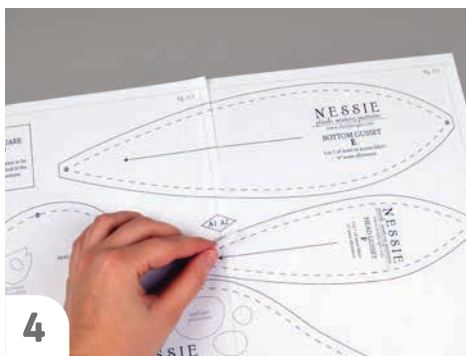
2

Print the pages needed for the file. You might have one or more. Either way, be sure you have the full collection by noting the page numbers in the corner.



3

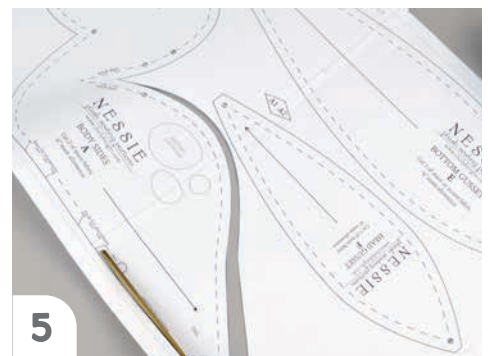
It's likely your printer will have a margin that ensures your image doesn't print to the very edge. Assembly will be easier if you trim off this blank margin edge. This will give you pages that overlap slightly during assembly. If you trim across the gray outline boxes, this will give you pages that don't overlap but rather butt against each other.



4

To line up the pattern pages, match up the corresponding diamond shapes. Each diamond will have a letter, so it's simply a matter of matching A1 to A2, B3 to B4 and so on. The faint gray lines indicate the border of every page, you should be able to line those up as well. When the diamond goes together, tape it in place.

If you have many pages, it's easier to tape up the pages into rows first. Then tape the rows together into a full block.



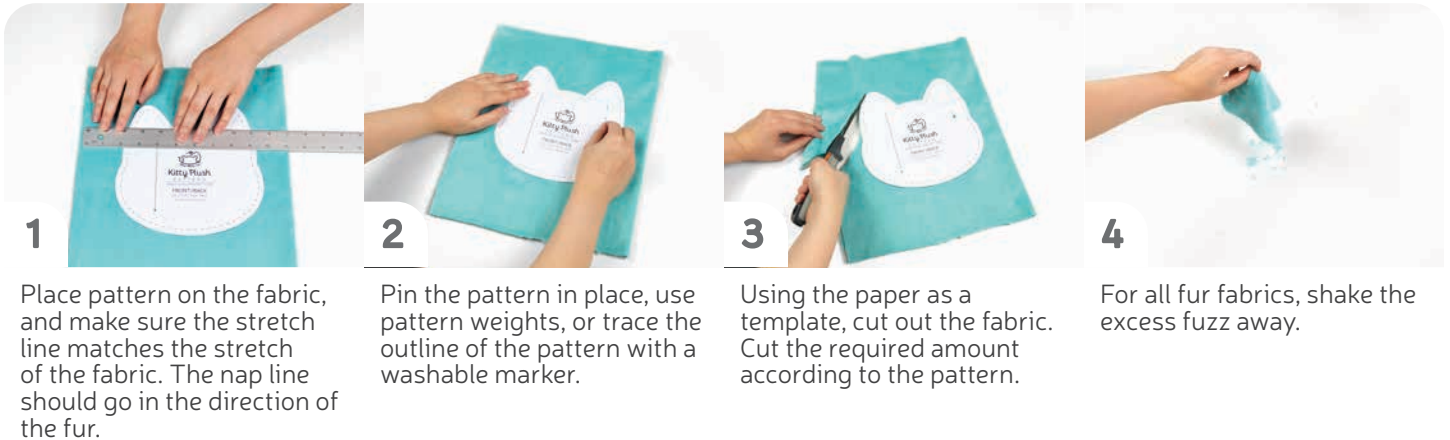
5

You can trace the patterns onto a different paper, or you can also just cut them straight from the printer paper -- be sure that each piece is fully taped together along the joins so they don't fall apart when you cut them.

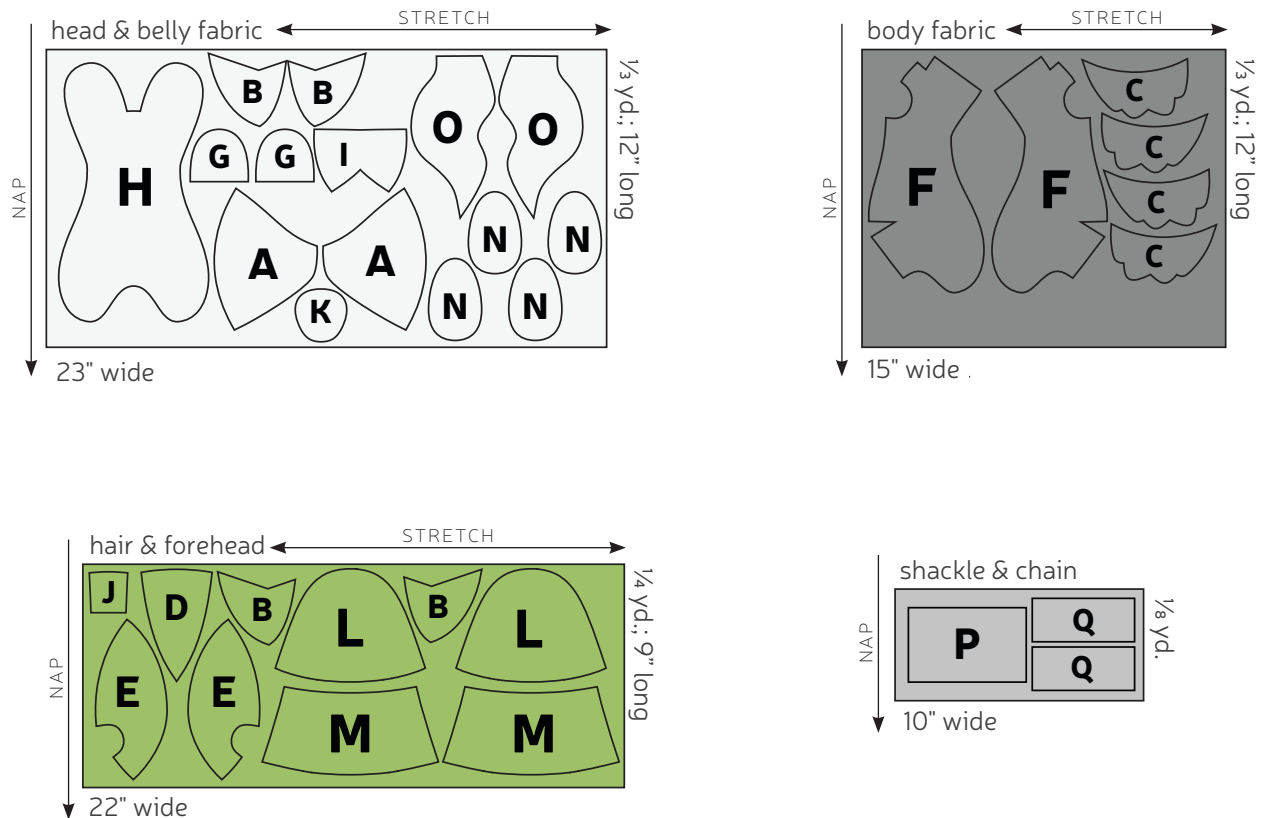
sew desu ne?

| WWW.CHOLYKNIGHT.COM |

CUTTING THE FABRIC:



CUTTING LAYOUT:



sew desu ne?

| WWW.CHOLYKNIGHT.COM |

BEFORE YOU BEGIN:

- Briefly read the project instructions so you know what to expect.
- If desired, mark the cut fabric pieces with the markings and symbols from the pattern. Or wait until the applicable step before transferring.
- Note that a ¼" seam allowance is used throughout the project, which is included in the pattern templates.

1. FUSE THE EYE APPLIQUE



a. Grab your fusible web and applique templates. Trace the pieces for the eyes of your wolf. You should have:

- **face markings** (2, gray)
- **eye whites** (2, white)
- **irises** (2, blue)
- **pupils** (2, black)
- **eye shines** (2, white)

b. Fuse the bumpy (adhesive) side of the fusible web onto the applique fabrics.

c. Cut out your applique pieces and grab your **HEAD FRONT** piece (A). Grab the **face marking** applique piece. Set your paper pattern on top of the head front piece. Align the applique piece on top where the placement markings are. Next, carefully pull the paper pattern away while holding the applique piece in place.

d. Fuse the applique pieces with your iron. Use a press cloth, such as a scrap piece of cotton. This will help protect any polyester or fuzzy fabrics from melting or scorching.



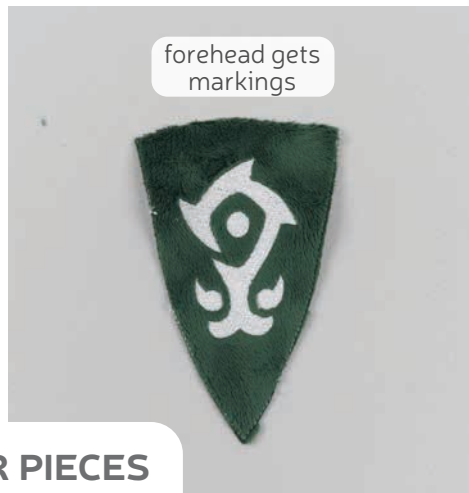
sew desu ne?

| WWW.CHOLYKNIGHT.COM |



2. SEW THE EYE APPLIQUE

- Add the **eye white** pieces next. Use the paper pattern and photos as a placement guide.
- Next align the **irises** and fuse the pieces in place.
- Lastly add the smallest pieces, the **pupils** and **eye shines**.



3. APPLIQUE THE OTHER PIECES

→ Also take this time to applique your other fabric pieces. Link has a lot of body markings so it may take a bit of time.

- The **BODY BACK** (F) will get **body markings**. You'll need 2 in white.
- The **FOREHEAD** (D) will get **forehead markings**. You'll need 1 of each piece in white.
- The **CHEEK FLUFF** (C) will get **cheek fluff markings**. You'll need 2 in white. Fuse the applique to two of the cheek fluff pieces so you have a mirrored pair. Leave the other two blank.

sew desu ne?

| WWW.CHOLYKNIGHT.COM |

4. FINISH THE APPLIQUE



- a. The **TAIL** (O) will get **tail fur**. You'll need 2 in green.
- b. The **BELLY** (D) will get **paws**. You'll need 2 of each paw pad piece in black.
- c. The **BACK FEET** (N) will also get **paws**. You'll need 2 of each paw pad piece in black. Fuse the applique to two of the back foot pieces. Leave the other two blank.



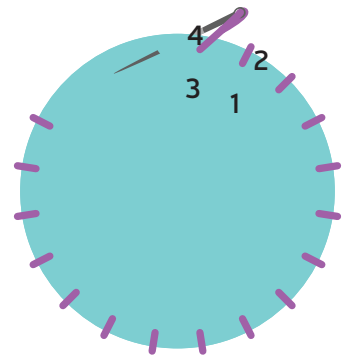
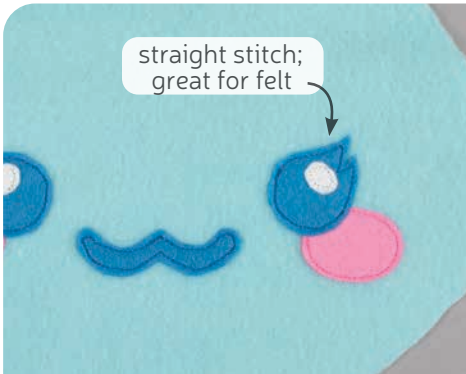
- d. Meanwhile for the **MUZZLE** (I), you'll need to attach it to the **NOSE BRIDGE** (J) before you fuse the applique. The nose bridge is attached along the center top of the muzzle, but you can also look for the **numbered points** for help with alignment. Look for **point 9** on the paper pattern.
- e. Align the nose bridge with the muzzle so right sides are facing and **point 9** matches up. Sew the nose bridge to the muzzle from **point 9 to 9**.
- f. Now open up the sewn pieces and fuse your applique pieces. The muzzle will get the **nose** and **mouth** in black with the optional tiny **nose shine** in white. Meanwhile the nose bridge will get the **nose bridge marking** in white.

If you used heavy duty fusible web, you can keep the pieces fused without sewing, or you can sew them in place a number of ways. I've used a zigzag stitch here.

→ Refer to the next step for some other applique options.

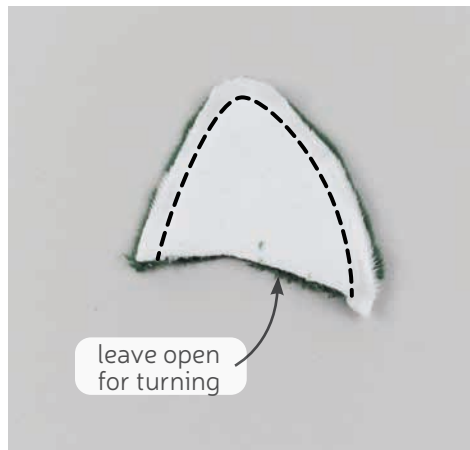
sew desu ne?

| WWW.CHOLYKNIGHT.COM |



5. OTHER APPLIQUE OPTIONS

- Other good options for applique include a straight stitch, which involves sewing around the edge of the applique pieces with a straight stitch using matching thread -- about 1/8" in from the edge.
- You can also applique by hand; I prefer a whipstitch. Thread a hand-sewing needle with some matching thread and knot it. Bring the thread up from the back of the project; about 1/8" in from the edge of the applique shape. Bring it down perpendicular from the curve, just outside of the applique shape. This completes one stitch.
- For the next stitch, bring the needle back up about 1/8" away from the previous stitch and 1/8" in from the edge just as in the first stitch. Once again, bring it down just outside the applique shape. Continue this way until you've sewn around the shape.



6. SEW THE EARS

- Grab your **EAR** pieces (B). Take one from your white fabric and one from your green fabric. Line them up with right sides facing and the raw edges matching up,
- Sew the pieces together along the long pointed edges. Leave the short straight edges free for turning the piece right side out.
- Repeat this with your remaining ear pieces so you have two total. Trim the excess seam allowance at the tip of the ear to reduce bulk, and turn the ears right side out. Define the points with a chopstick or similar turning tool. When complete you should have a mirrored pair as shown.

sew desu ne?

| WWW.CHOLYKNIGHT.COM |



7. BASTE THE FRONT EAR CORNER

- Take one of your sewn **EARS** and make a clip into the seam allowance at the inner corner. This clipping line marked on the paper pattern as well as **point 1**. Clip up to **point 1** and stop. This will help the ear bend around the corner of the head so the ear makes a 3D shape.
- Grab your **HEAD FRONT** piece (A). If you haven't already, note the **ear placement lines** found on the paper pattern for the head front. Align the open edge of the ear within the lines so the shorter side matches with the top of the head front. **Point 1** should match up at the corner. Make sure the white inner ear fabric is facing down and pin the ear to the head front.
- Baste the ear in place within the seam allowance from the edge of the ear to **point 1**.

BASTING:

A form of temporary sewing meant to hold pieces in place. A long stitch length is often used for this reason. The finished result is not meant to be seen and sometimes is even removed later (depending on your project).

8. BASTE THE SIDE EAR CORNER

- Now grab the other open edge of the **EAR** (B) and align it down the side of the **HEAD FRONT** piece (A). Make sure right sides are facing and pin the ear to the head front.
- Sew from **point 1** down to the end of the ear. When complete, you should have an ear that's attached around the upper corner of the head. Repeat this with your other head front piece and your other ear piece for both sides.



sew desu ne?

| WWW.CHOLYKNIGHT.COM |



9. SEW THE CHEEK FLUFFS

- Grab your **CHEEK FLUFF** pieces (C). Take one that has the markings applied and another that's blank. Align the applied piece with the blank piece so right sides are facing and the raw edges match up.
- Sew the fluff pieces together around the jagged edge. Leave the slightly curved edge free for turning the piece right side out later.
- Trim the excess seam allowance around the corners and curves of your seam. This will reduce bulk and increase flexibility of the seam so it turns more cleanly. Repeat this with your other cheek fluff pieces so you have a matching pair.



10. BASTE THE CHEEK FLUFFS

- Turn your **CHEEK FLUFF** pieces (C) right side out. Define the points with a chopstick or similar turning tool.
- If you haven't already, note the **cheek fluff placement lines** found on the paper pattern for the **HEAD FRONT** (A). Align the open edge of the cheek fluff within these **placement lines** so the applied marking is facing upward.
- Now flip the cheek fluff so it's pointing inward and the applied marking is facing downward. It will overlap slightly with the ear. Align the raw edges of the cheek fluff so they're flush with the head and pin the layers together. Baste the cheek fluff to the head front to hold them in place for future steps. Repeat this with your other cheek fluff piece for a mirrored pair as shown.

sew desu ne?

| WWW.CHOLYKNIGHT.COM |



11. SEW THE FOREHEAD

- Grab your **FOREHEAD** piece (D) as well as your head front so far. The forehead will join to the head front along the sides of the forehead. But you can also look out for the **numbered points** for help with alignment. Look for **points 1 and 2**.
- Align the forehead with the head front so right sides are facing and **point 1** matches at the top corner and **point 2** matches at the corner in the nose area. Part of the **EAR** (B) should be secured in between. If the rest of the ear gets in the way, you can fold it out of the way for now. Make sure right sides are facing and pin the fabrics together.
- Sew the forehead to the head front from **point 1 to 2**. Part of the ear should be secured within the seam now.



12. FINISH THE FOREHEAD

- Grab your other head front piece. We're going to attach this to the other side of the forehead in the same manner.
- Line up the forehead with the head front so right sides are facing and **points 1 and 2** match up. Pin the fabrics together.
- Sew the other side of the forehead from **point 1 to 2**.

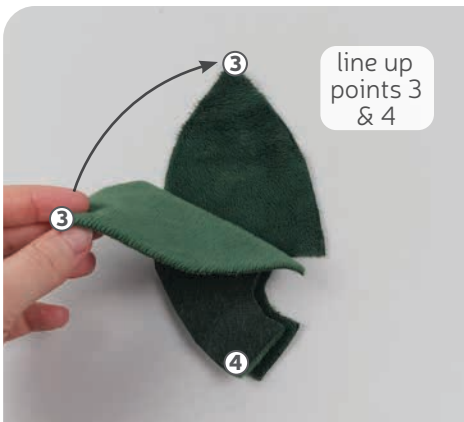
sew desu ne?

| WWW.CHOLYKNIGHT.COM |



13. SEW THE CHIN

- Now grab the bottom edges of your **HEAD FRONT** pieces (A). These edges will join next, but you can also look out for the **numbered points** for help. We'll be sewing down to **point 4** at the bottom corner.
Make sure right sides are facing and pin the fabrics together.
- Sew from the nose corner at **point 2** down to **point 4**.
- Turn the head front right side out and it should look something like the third photo.



14. SEW THE HEAD BACK

- Grab your **HEAD BACK** pieces (E). Align them with right sides facing and the raw edges matching up.
- Sew the pieces together along the center back edge. This is the edge with the **neck opening** (the inner curve marked on the paper pattern). If you're watching the **numbered points**, you'll sew from **point 3 to 4**, but skip over the inner curve.
- Open up the head back pieces when complete.

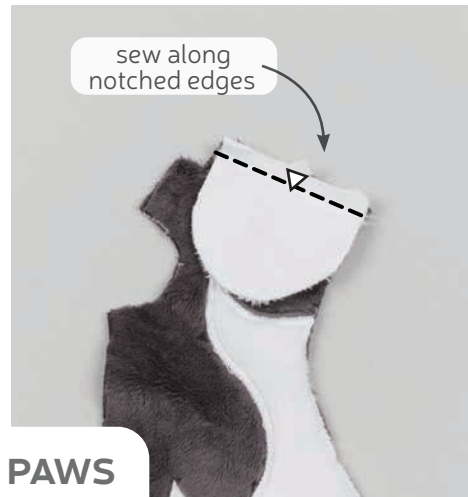
sew desu ne?

| WWW.CHOLYKNIGHT.COM |



15. ATTACH THE HEAD BACK

- Grab your **HEAD FRONT** so far as well as your **HEAD BACK**. Make sure the **CHEEK FLUFF** and **EARS** are tucked inside. We're going to attach the head back to the front all the way around. You can look for the **numbered points** for help with alignment. **Point 3** will match up at the center top and **point 4** will match up at the center bottom. Make sure right sides are facing and pin the fabrics together.
- Sew the head back to the front all the way around the circle.
- Turn the head right side out and it should look something like the third photo. Set your head aside for a moment while we work on the body.



16. ATTACH THE FRONT PAWS

- Grab your **BODY BACK** pieces (F) as well as your **FRONT PAW** pieces (G). These pieces will join together to create the accent paw for the body. They're joined along the straight edges, but you can also use the **notch markings** found on the paper pattern for help with alignment. Align the front paw with the body back so right sides are facing and the **notch markings** match up. Pin the fabrics together.
- Sew the paw to the body along the **notched edge**.
- Open up the pieces and it should look something like the third photo. Repeat this with your other body back and paw pieces for two sides to the body.

sew desu ne?

| WWW.CHOLYKNIGHT.COM |



fold along
point of dart



blend stitching
into fold

DARTS:

A wedge-shaped gap found in a pattern. When sewn in fabric, it creates a tuck in the fabric and develops a 3D shape. The diagonal sides of the wedge are the **LEGS**; these are matched up and sewn to the **POINT** of the dart.

17. SEW THE BODY DARTS

- Grab your **BODY BACK** pieces (F). These pieces have **darts** along the hip area. This is the small wedge shape cut out from the edge of the pattern. We're going to sew it starting by folding the fabric along the point of the **dart** so the slanted edges of the **dart** match up.
- Sew from the opening of the **dart** into the fold of the fabric. Try to blend your stitching into the fold for a smooth transition and a rounder finish to the plush. Repeat this with your other body back piece so you have two **darts** total.



leave open
for neck

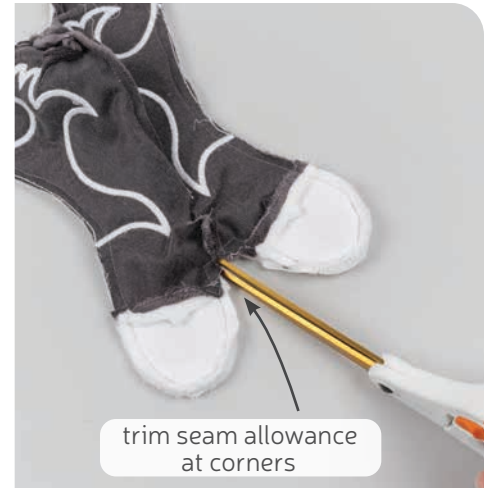
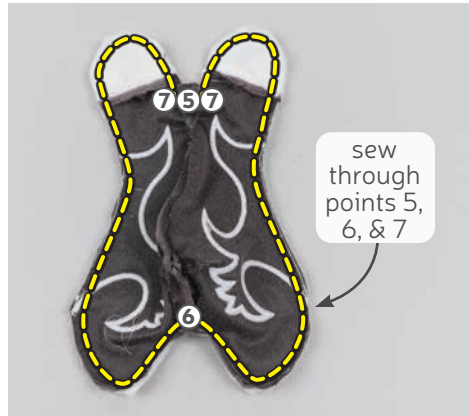


18. JOIN THE BODY BACK PIECES

- Grab your two **BODY BACK** pieces and align them with right sides facing. Match up the center back edge. This is the edge going from **point 5 to point 6** if you're watching the paper pattern. It's also the edge that has the inner curve for the **neck opening**, and the **dart** that was sewn in the previous step. Pin the edges together from **point 5 to point 6**.
- Sew the body pieces together from **point 5 to 6**, but skip over the inner curve for the **neck opening**.
- Open up the body pieces when complete.

sew desu ne?

| WWW.CHOLYKNIGHT.COM |



19. ATTACH THE BODY TO THE BELLY

- Grab your **BELLY** piece (H). Align the body back with the belly so right sides are facing and the raw edges match up. The arms and legs should match up around the curves. You can also double check your placement by looking for the **numbered points**. **Point 5** should match up at the center front, **point 7** should match up at the corner where the front arms begin, and **point 6** should match up at the center bottom between the legs. Make sure right sides are facing and pin the pieces together.
- Sew the body to the belly all the way around the piece, going through **points 5, 6, and 7**.
- Before turning the body right side out, trim the seam allowance at any tight corners and curves. This is especially important at **point 7** where the body meets the arms and at **point 6** between the legs.



20. STUFF THE BODY

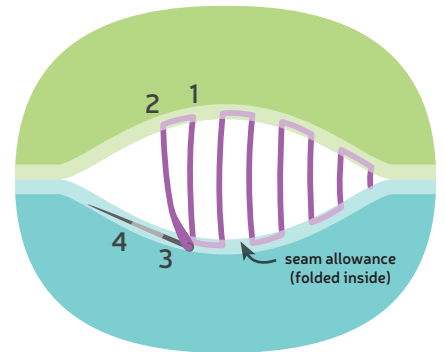
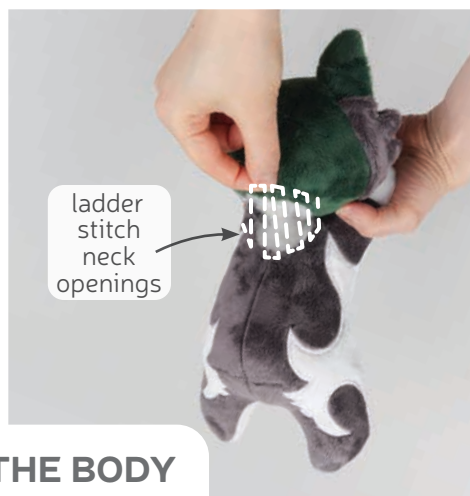
- Turn the body right side out through the opening for the neck.
- Begin stuffing the body, starting by getting tiny bits in the front arms and back legs. Use small bits of stuffing here to ensure that the pieces stay full and don't deflate later.
- Stuff the rest of the body semi-firmly with stuffing. Work your way up to the opening in the neck.

sew desu ne?

| WWW.CHOLYKNIGHT.COM |

21. STUFF THE HEAD

- a. Grab your head and begin stuffing it as well. The tip of the nose doesn't need to be stuffed firmly since the muzzle will cover it in future steps. Stuff the rest of the head firmly enough that there are no wrinkles near the seams.
- b. Continue stuffing the head as your work your way towards the opening for the neck.



22. SEW THE HEAD TO THE BODY

- a. Take your head and align it onto the body of your plush. Line up the neck openings. The center seam on the **HEAD BACK** piece (E) should line up with the center seams on the **BODY BACK** (F).
- b. To begin attaching them, we'll use a ladder stitch. Start by taking one stitch into the center head back seam at the top, then take another stitch into the center back seam on the body. Join the neck openings all the way around. It helps to use a longer stitch at first just to hold the pieces together. Check that you like the placement of the head, then go around again with tinier, neater stitches for a more secure hold.

sew desu ne?

| WWW.CHOLYKNIGHT.COM |



23. SEW THE MUZZLE DARTS

- Grab your **MUZZLE** piece so far. The corner where the **NOSE BRIDGE** meets the muzzle forms a **dart** similar to previous **darts**. We're going to sew it the same way. Start by folding the fabric along the corner of the nose bridge and muzzle. Make sure right sides are facing and line up the edges. Pin the fabrics together.
- Sew from the opening of the **dart** into the fold of the fabric. For the two nose bridge **darts** you'll be sewing very close to the edge of the nose.
- Repeat this with your other two **darts** so you have three total. The bottom center **dart** will be more rounded, so you can blend your stitching into the fold for a smooth finish.

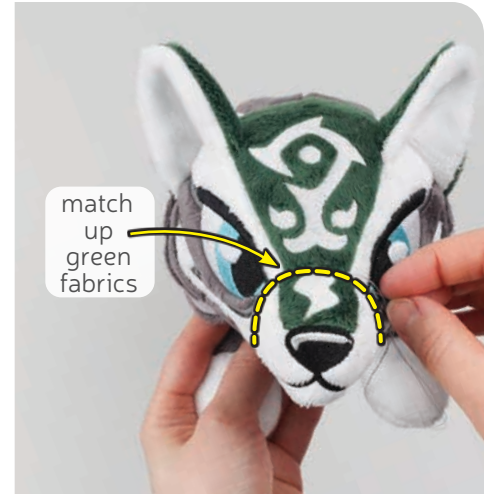


24. ATTACH THE MUZZLE BASE

- Grab your **MUZZLE BASE** piece (K). The open end of the muzzle will be joined around this base piece. But you can look out for the **numbered points** for help with alignment. **Point 10** will align at the center top and **point 8** will align at the center bottom.. Align the muzzle around the muzzle base so right sides are facing and **points 10 and 8** match up.
- Sew the muzzle to the base all the way around.
- To turn the muzzle right side out, cut a short slit into the base piece only. Cut it along the center of the piece. You can also refer to the paper pattern and use the **cutting guide** for extra help.

sew desu ne?

| WWW.CHOLYKNIGHT.COM |



25. ATTACH THE MUZZLE TO THE HEAD

- Stuff the muzzle semi-firmly with stuffing. Get it full enough so there are no wrinkles near the darts or other seams. At the base of the muzzle, you can stuff it lightly since it will be squished up against the face of your plush.
- Align the muzzle onto the front of your wolf's head. Try to line up the nose bridge with the forehead so the green fabrics line up.
- Ladder stitch the muzzle to the face all the way around the base.



26. SEW THE HAIR PIECES

- Grab your **HAIR** pieces (L & M). Take two matching ones and line them up with right sides facing and the raw edges aligning.
- The locks of the hair are very close together, so to sew them accurately you'll want to trace the seam line from the paper pattern. Trim away the seam allowance from the paper, then use this as a tracing guide on the wrong side of the fabric. Trace around the paper using a fabric marker.
- Sew the pieces together along the traced lines. For the **UPPER HAIR** (L) you'll be sewing entirely around the shape. For the **LOWER HAIR** (M), leave an *opening for turning* in the center top as shown in the photo and as marked on the paper pattern.

sew desu ne?

| WWW.CHOLYKNIGHT.COM |



27. TRIM & TURN THE HAIR PIECES

- Trim the seam allowance around the sharp corners and curves of your **HAIR** pieces. Trim around the outer corners to reduce bulk. Clip very closely into the inner corners between the locks. Trim as close as you can into the corners without cutting your stitching. This will increase the flexibility in those areas and allow the piece to turn more cleanly.
- To turn the **UPPER HAIR** piece right side out, cut a short slit through one layer of the fabric only. Cut it centered around the base of the hair, but you can also refer to the **cutting guide** on the paper pattern for extra help.
- Turn the hair pieces right side out through the openings. Define the corners with a chopstick or similar turning tool.



28. ATTACH THE LOWER HAIR

- If desired, you can stuff the hair lightly with stuffing. This will give it some more body and fullness. If you prefer the hair to be thinner and floppier, leave it unstuffed.
- Take your **LOWER HAIR** piece (M) and tuck in the seam allowances from the **opening for turning**. Align this edge across the back of your wolf's head. It's placed about 1" up from the neck at the center back. However you can also refer to the **placement guide** on the paper pattern for extra help.
- Ladder stitch this edge of the hair to the back of the head along the top and underneath.

sew desu ne?

| WWW.CHOLYKNIGHT.COM |



29. ATTACH THE UPPER HAIR

- Grab your **UPPER HAIR** piece (L). Take this piece and align it over the top of your wolf's head. The opening you've cut should be facing down. Align it just behind the **forehead marking** and centered between the **EARS**.
- Ladder stitch the upper hair in place. While sewing the top edge between the ears, stitch close to the seam from before in step 26.
- As you sew towards the back, flip up the hair and stitch underneath. Go around the cut you made back in step 27.



30. SEW THE BACK FEET

- Grab your **BACK FEET** pieces (N). Take one with the applied paw pad and one that's blank. Align them with right sides facing and the raw edges matching.
- Sew entirely around the foot. Repeat with your remaining foot pieces for a pair of feet.
- To turn the foot right side out, cut a short slit into the blank foot piece only. Cut it around the center base of the foot. But you can also refer to the **cutting guide** on the paper pattern for extra help.

sew desu ne?

| WWW.CHOLYKNIGHT.COM |

31. ATTACH THE BACK FEET

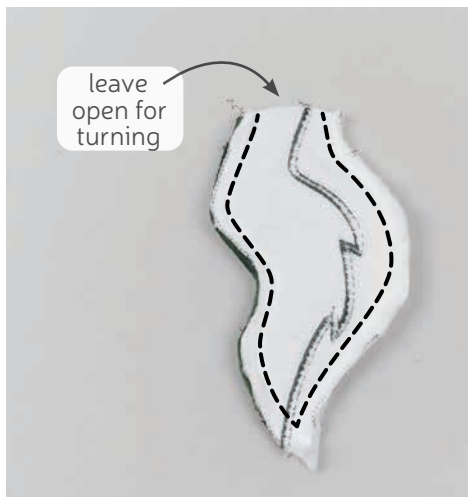


- Turn your **BACK FEET** (N) right side out through the opening you cut before.
- Stuff the feet semi-firmly with stuffing so they puff up and take shape.
- Take your back feet and align them onto the ends of your wolf's legs. Make the cut end face the rounded end of the leg.
- Attach the foot to the leg with a ladder stitch, going around the cut you made before. Repeat this with both feet.

32. SEW THE TAIL

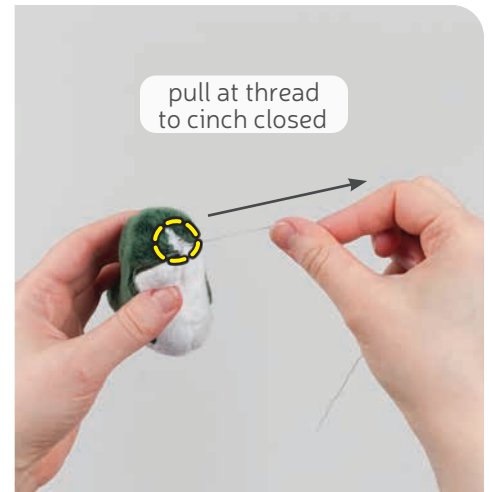
- Take your **TAIL** pieces (O). Align them with right sides facing and the raw edges matching up. Sew the pieces together along the long curved edge. Leave the short straight edge open for turning the piece right side out later.

- Trim the excess seam allowance around the tight corners and curves of the piece to reduce bulk. Turn the tail right side out through the opening then define the point with a chopstick or similar turning tool.



sew desu ne?

| WWW.CHOLYKNIGHT.COM |



33. CINCH THE TAIL CLOSED

- Stuff the **TAIL** (O) semi-firmly with stuffing. Be sure to get small bits in the tip of the tail so it stays looking pointy and doesn't deflate later.
- Cinch the tail closed by sewing a gathering stitch around the opening of the tail. Sew about $\frac{1}{4}$ " away from the raw edge all the way around.
- Pull at the gathering stitch to cinch it closed. Sew a few knots into the center of the cinched end to hold it closed.

GATHERING:

The process of shortening the length of a piece of fabric by sewing long stitches through it. When the thread is pulled, it forms small folds that ruffle the fabric.

GATHERING STITCH:

A long version of the running stitch, which is a stitch done by weaving the needle in and out of a length of fabric going along a line. The long stitches (about $\frac{1}{4}$ " - $\frac{1}{2}$ " long) gather the fabric when pulled later.

34. ATTACH THE TAIL

- Take your tail and align the cinched end onto the back of the body. Align it over the **darts** sewn back in step 17.
- Attach the tail using a ladder stitch around the cinched end.

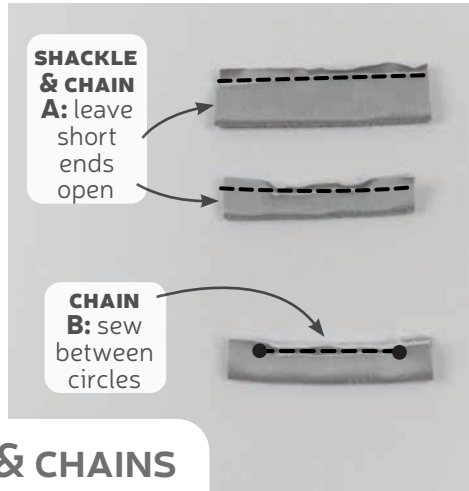


sew desu ne?

| WWW.CHOLYKNIGHT.COM |

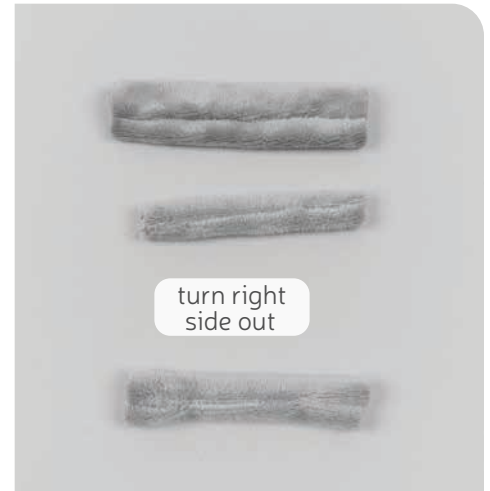


fold in half lengthwise



SHACKLE & CHAIN A: leave short ends open

CHAIN B: sew between circles



turn right side out

35. SEW THE SHACKLE & CHAINS

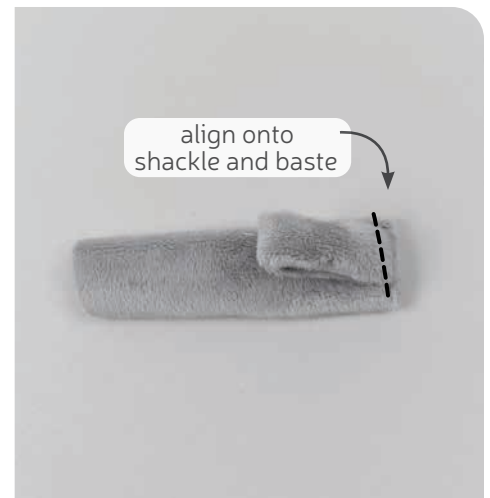
- Grab your **SHACKLE** and **CHAIN** pieces (P and Q). Fold them in half lengthwise with right sides facing so they make an even skinnier strip.
- FOR THE SHACKLE:** sew the piece together along the long edge. Leave the two short ends free.
FOR ONE OF THE CHAINS: sew the piece together along the long edge. Leave the two short ends free. We'll call this **chain A** for the next step.
FOR THE OTHER CHAIN: sew the piece together along the long edge, but start and stop between the circle markings as marked on the paper pattern. We'll call this **chain B** for later in step 38.
- Turn all the tubes right side out through the openings you left.

36. BASTE THE FIRST CHAIN

- Grab your **SHACKLE** piece (P) and lay it on your work surface so the seam side is facing down. Take your **chain A** piece (the one with the narrow open ends). We're going to join it to the shackle. Fold **chain A** in half so the raw ends match up. Take the raw ends and align it onto one raw end of the shackle and center it there. Pin the fabrics together.
- Baste the **chain A** piece to the shackle through all the layers.



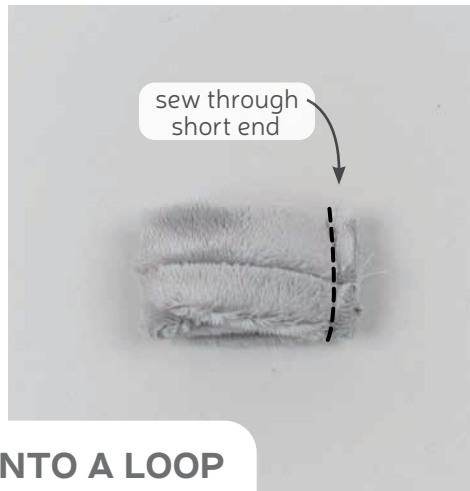
fold chain in half



align onto shackle and baste

sew desu ne?

| WWW.CHOLYKNIGHT.COM |



37. SEW THE SHACKLE INTO A LOOP

- Take your **SHACKLE** piece (P) and line up the open edges so the **chain A** piece is sandwiched inside. Pin the edges together.
- Sew the shackle along this short edge. You may want to sew very slowly or use just the hand wheel of your machine to make it through all the layers.
- Turn the shackle right side out, and the loop of your first chain should be secured in the seam.



38. JOIN THE SECOND CHAIN

- Grab your **chain B** piece (the one with the wide open ends). We're going to loop it around the first chain and join the ends. Start by looping it through the first chain.
- Open up the raw ends of the chain so they make a straight line. Now match up the ends so right sides are facing and the edges match up.
- Sew the pieces together along this edge.

sew desu ne?

| WWW.CHOLYKNIGHT.COM |



39. SEW THE CHAIN CLOSED

- Tuck in the seam allowances in the chain opening, and then straighten the piece out. It should make a clean loop shape again.
- Ladder stitch the opening in the chain closed.
- Now you can loop the shackle around the paw of your plush! To be character accurate, loop it around Link's left paw.



CONGRATS!
This completes your plush! Now go save Hyrule!

sew desu ne?

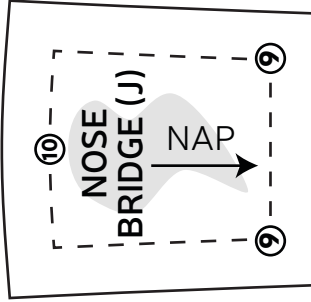
| WWW.CHOLYKNIGHT.COM |

TEST SQUARE 2"

measure this square to
be sure you've printed
at the proper
proportions

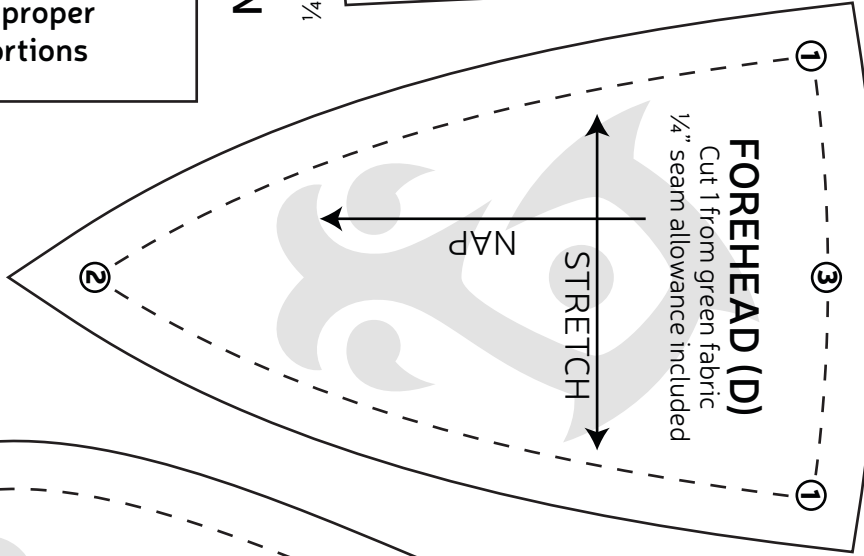
NOSE BRIDGE (J)

Cut 1 from green fabric
1/4" seam allowance included



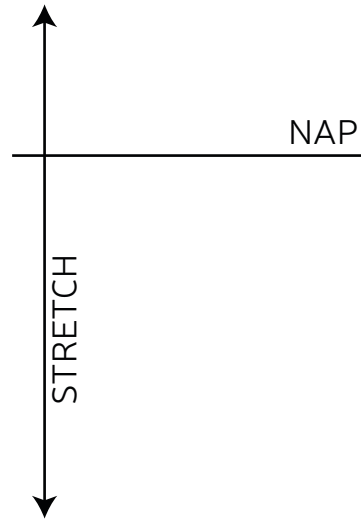
FOREHEAD (D)

Cut 1 from green fabric
1/4" seam allowance included



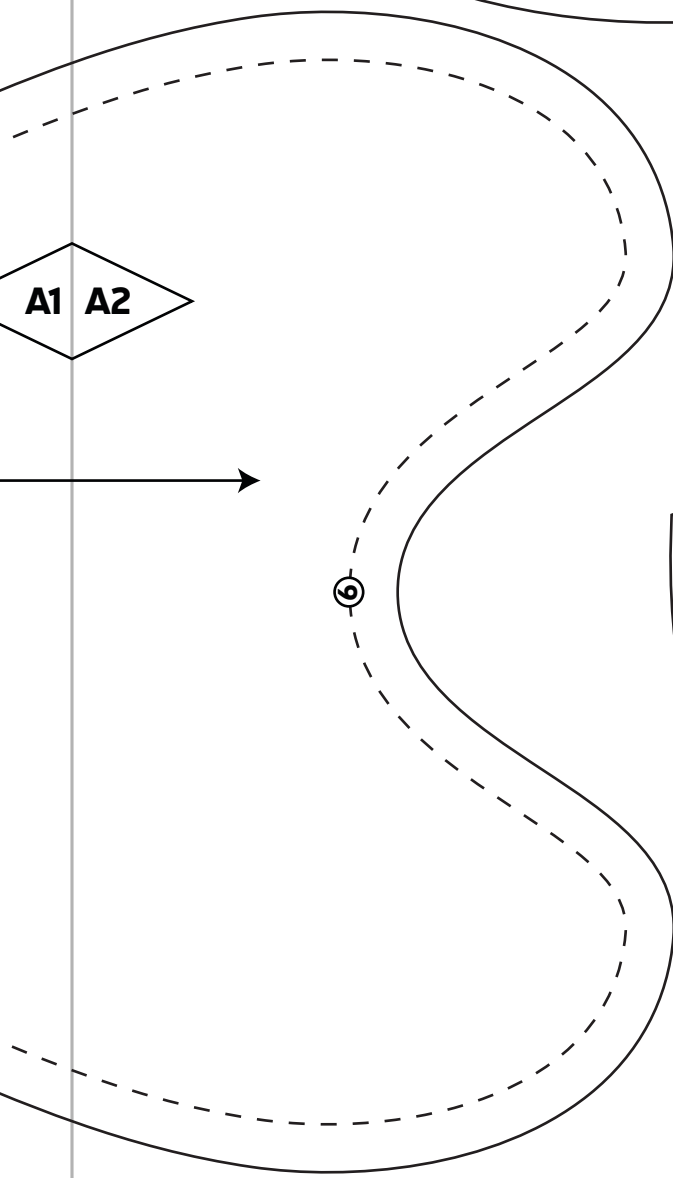
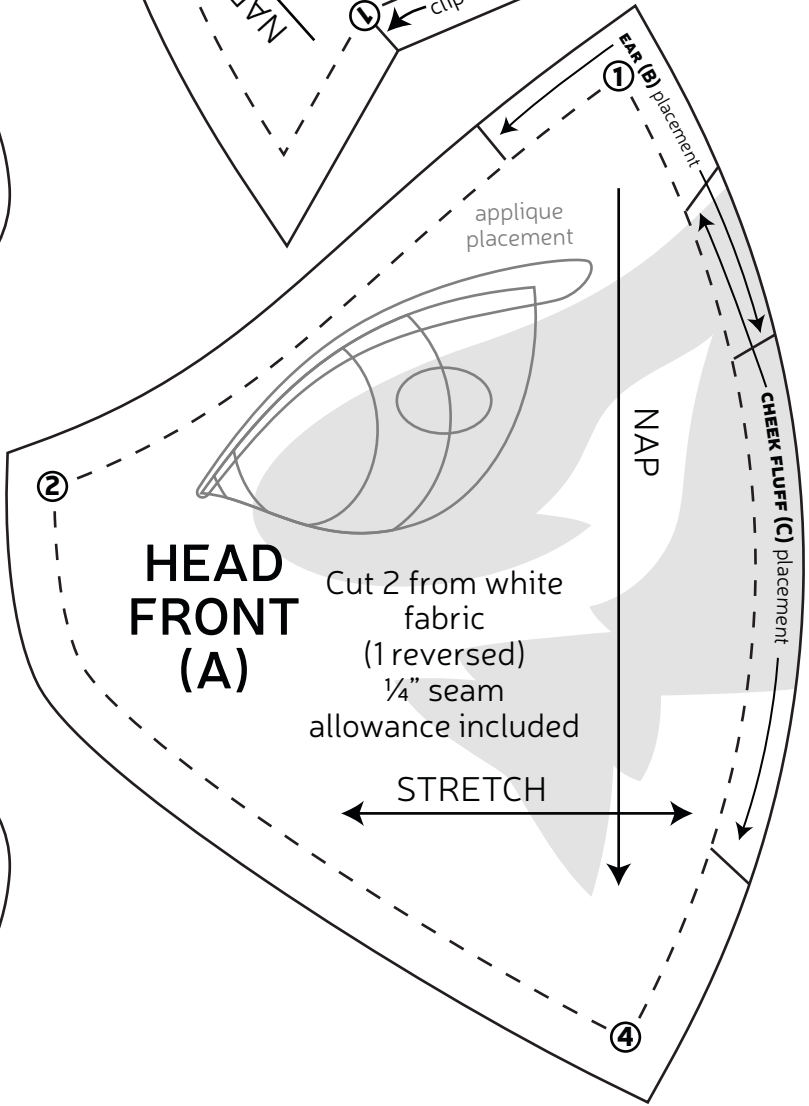
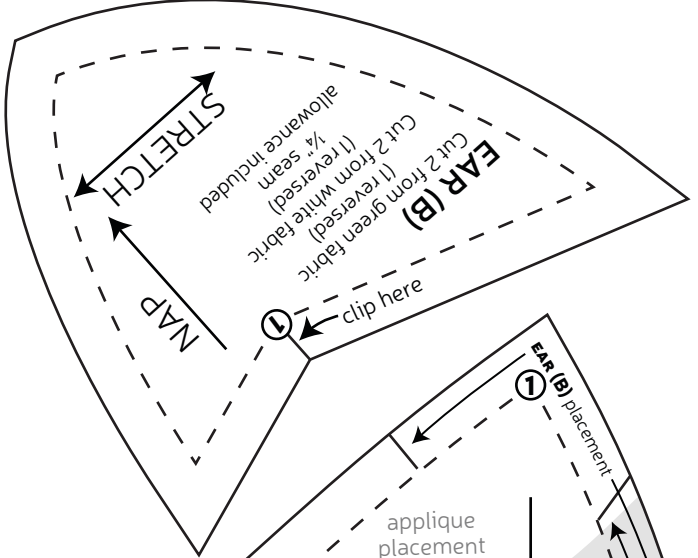
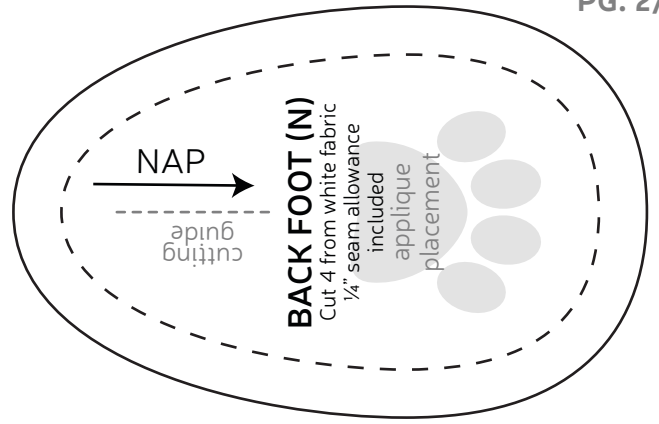
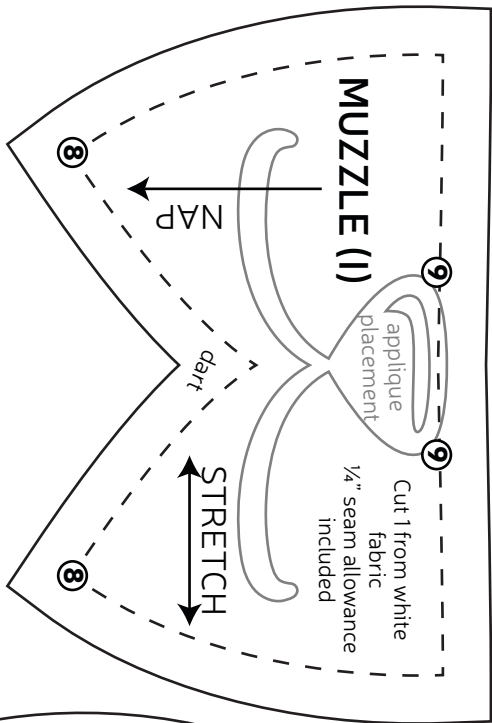
BELLY (H)

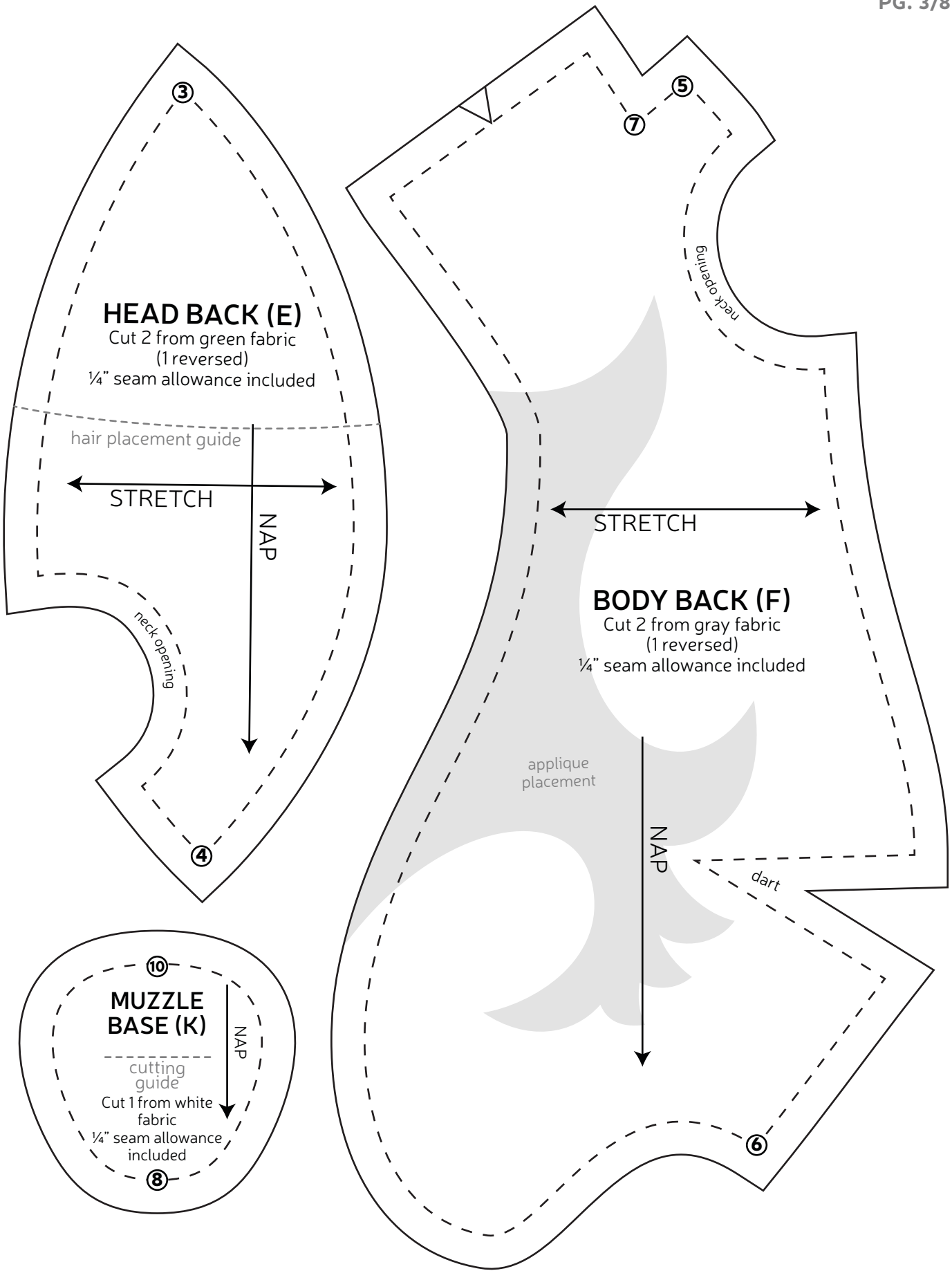
Cut 1 from white fabric
1/4" seam allowance included

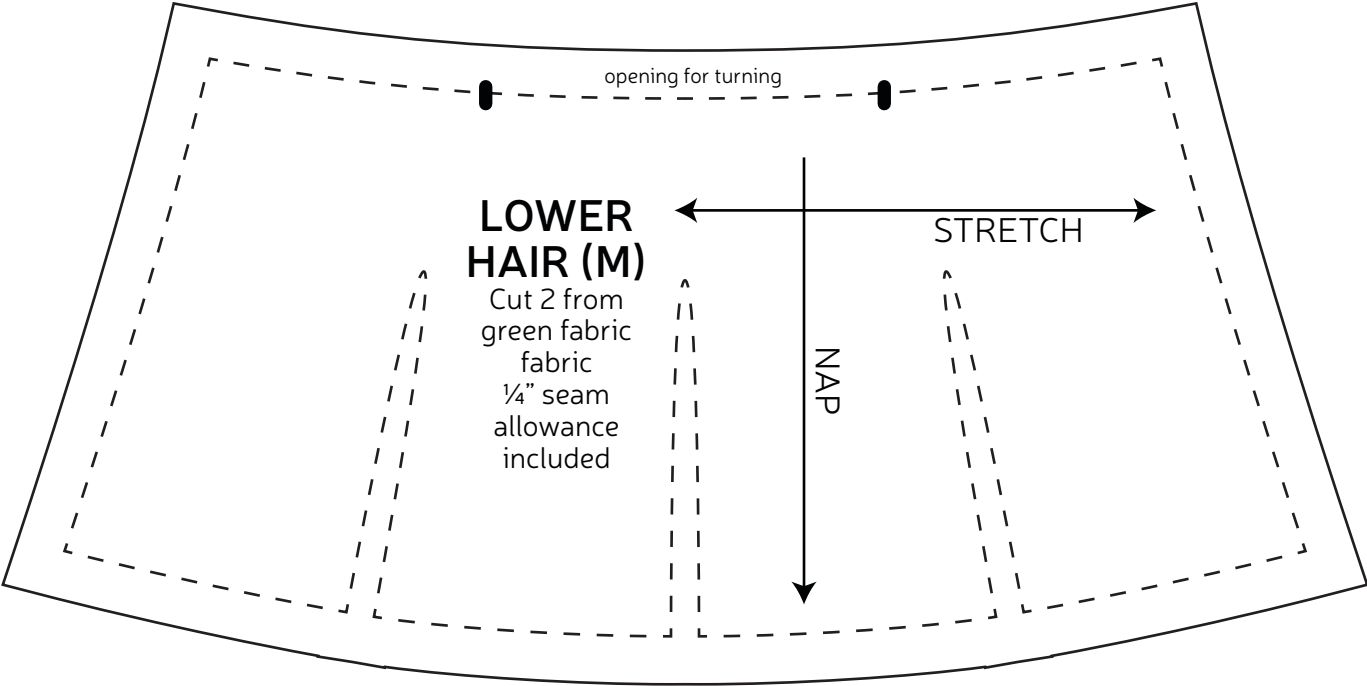
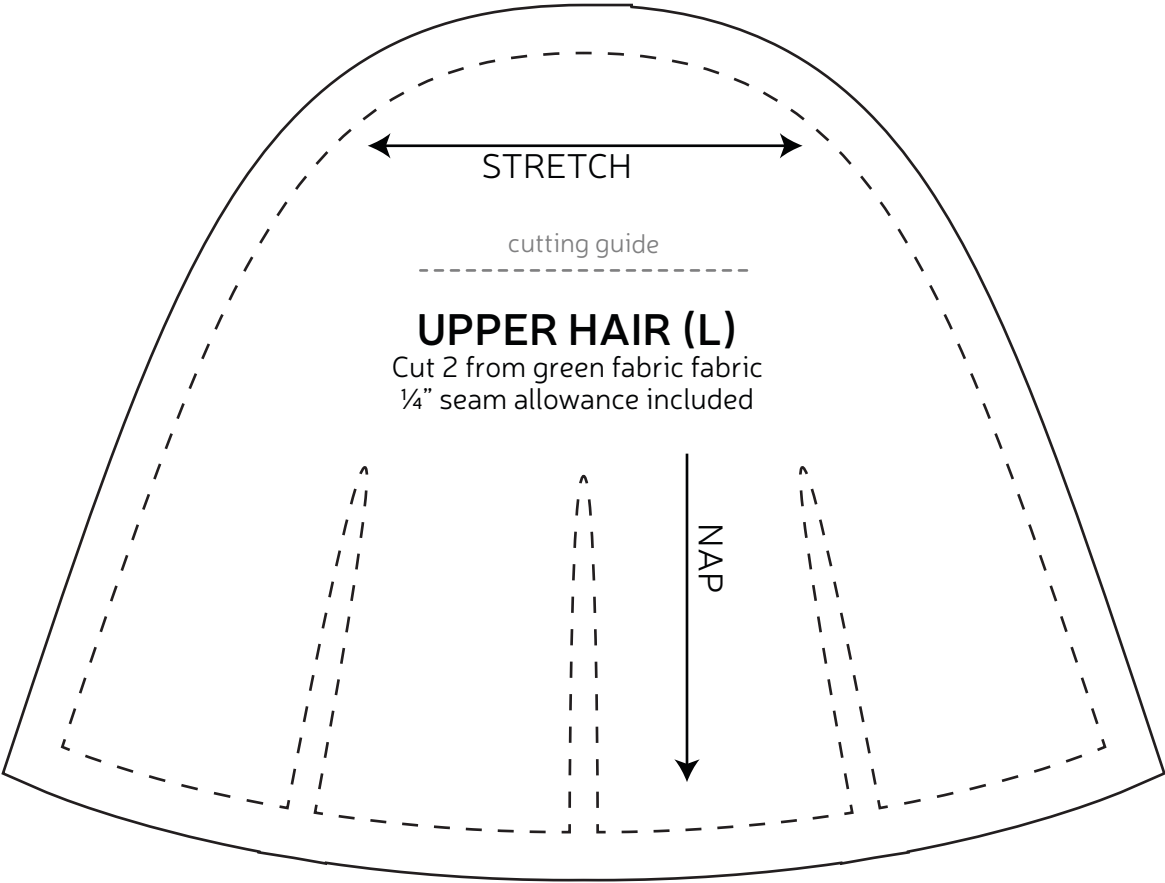


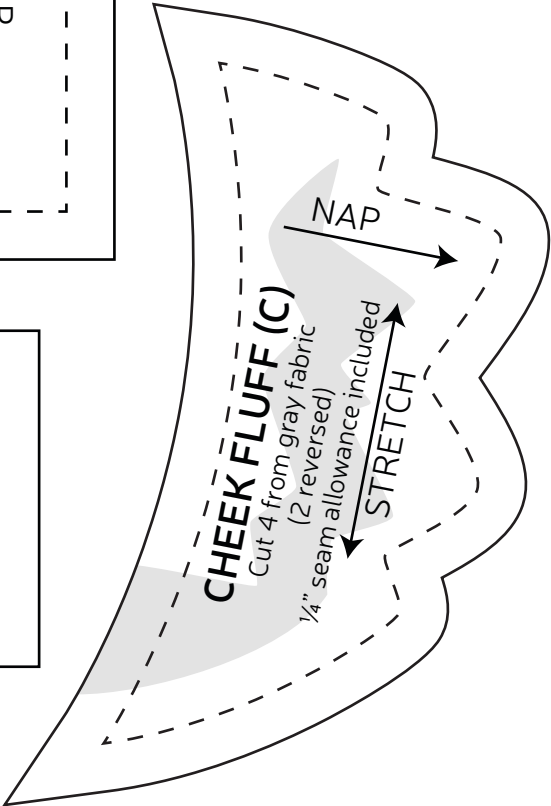
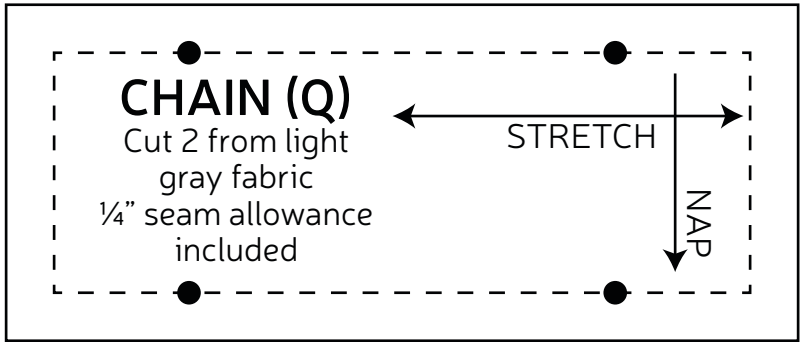
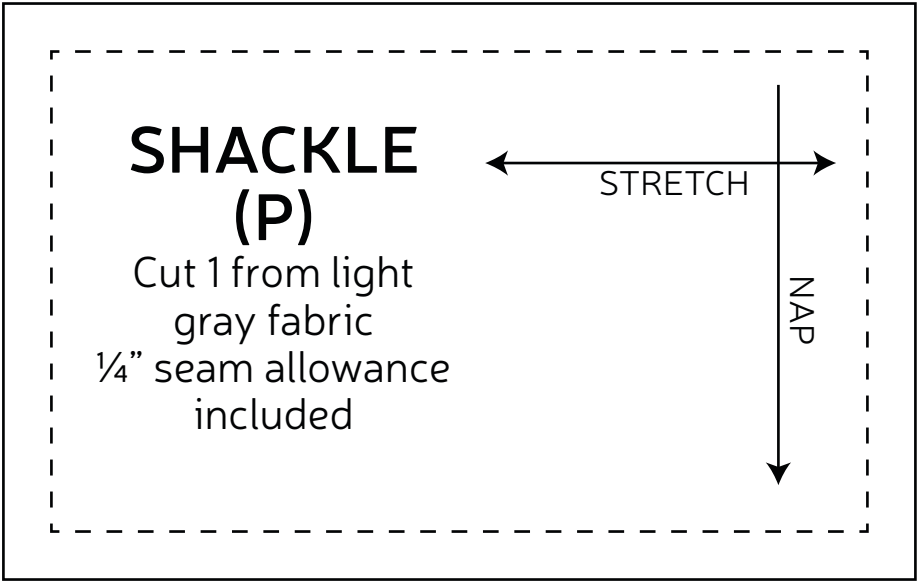
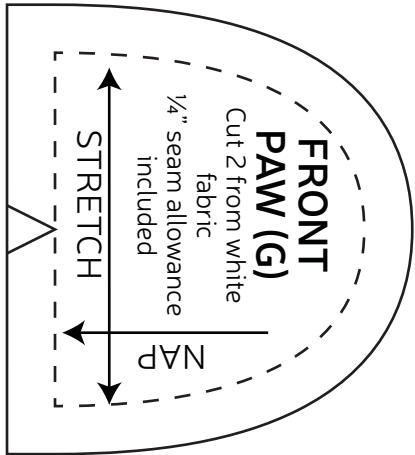
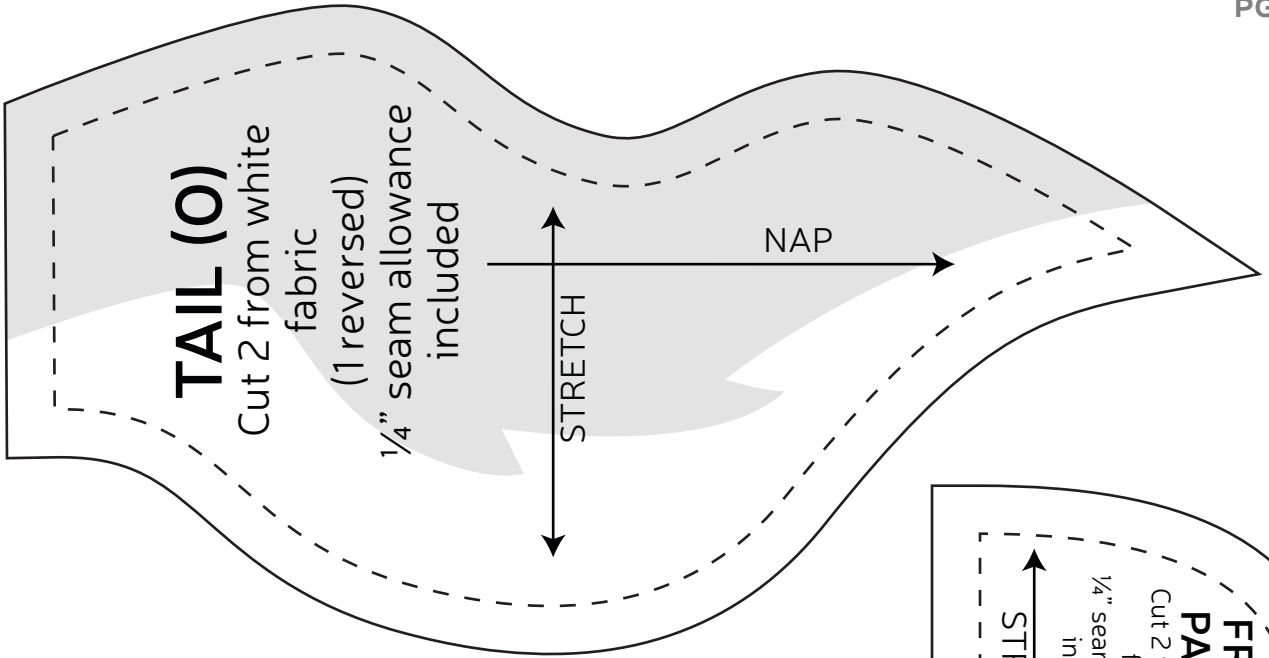
appliance
placement

A1 A2









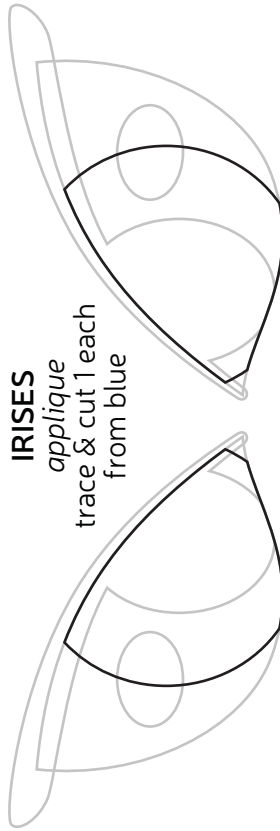
EYE WHITES

aplique
trace & cut 1 each
from white



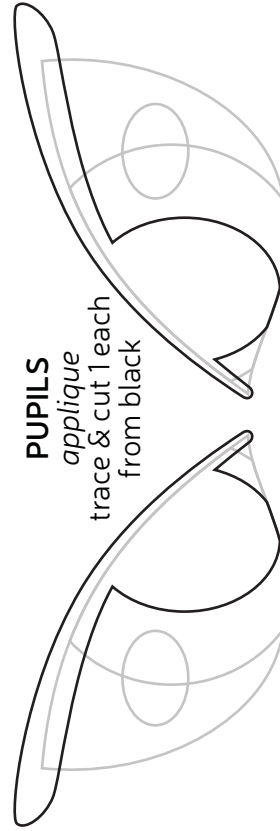
IRISES

aplique
trace & cut 1 each
from blue



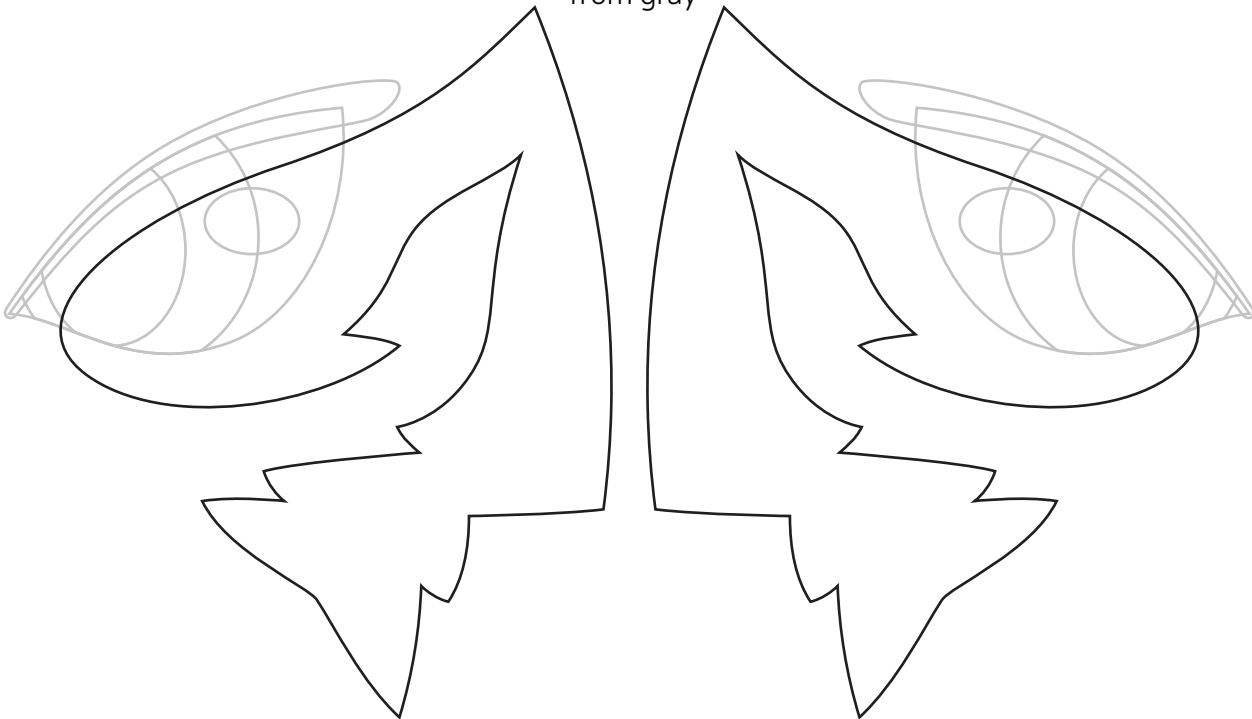
PUPILS

aplique
trace & cut 1 each
from black



FACE MARKINGS

aplique
trace & cut 1 each
from gray



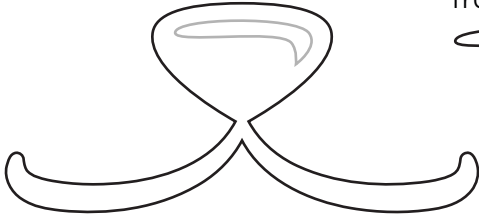
EYE SHINE

aplique
trace & cut 2
from white



MUZZLE

applique
trace & cut 1
from black



NOSE SHINE

applique
trace & cut 1
from white



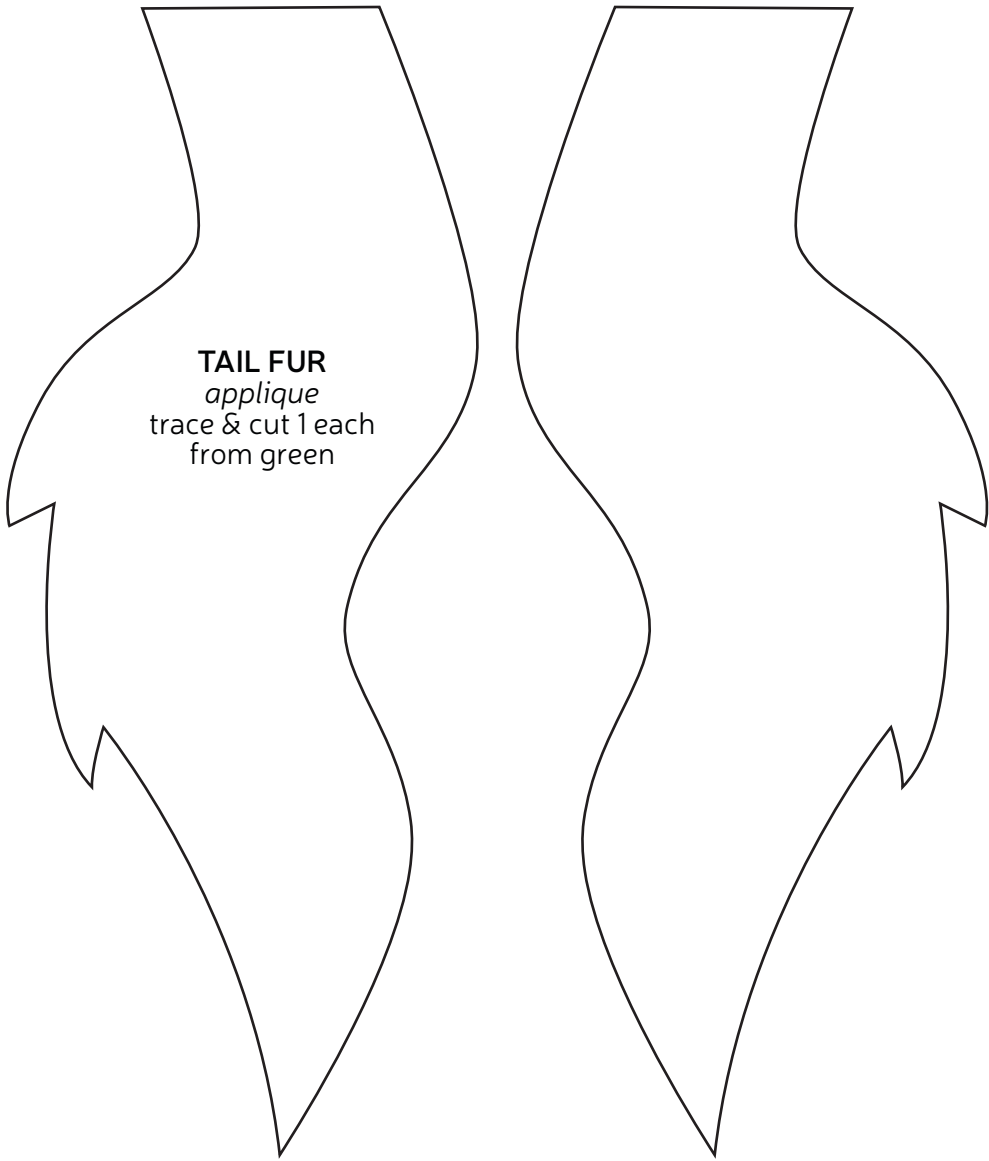
PAW PADS

applique
trace & cut 4 each
from black



TAIL FUR

applique
trace & cut 1 each
from green





NOSE BRIDGE MARKING
applique
trace & cut 1 from white



FOREHEAD MARKINGS
applique
trace & cut 1 each from white

