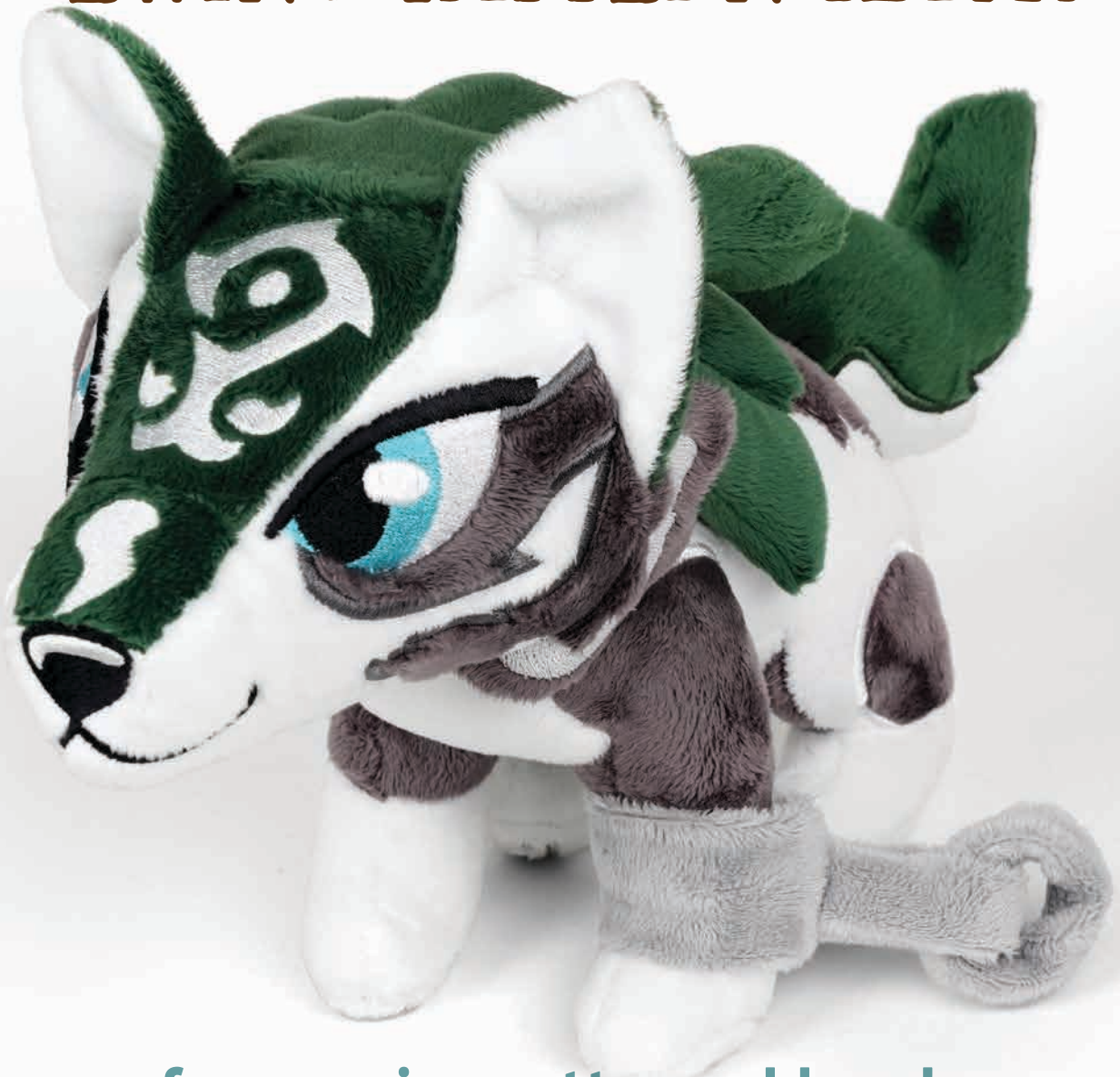
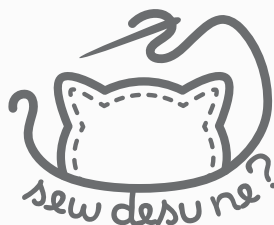


# WOLF LINK

## HYENA & WILD DOGS PLUSH SEWING PATTERN HACK



a free sewing pattern add-on by

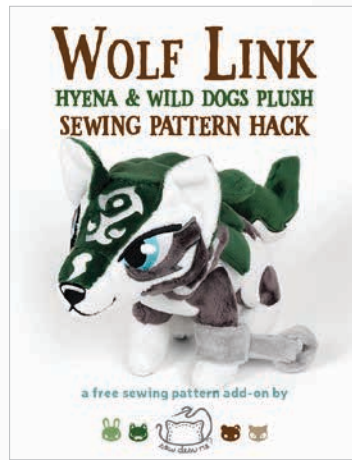


# WOLF LINK PLUSH PATTERN HACK

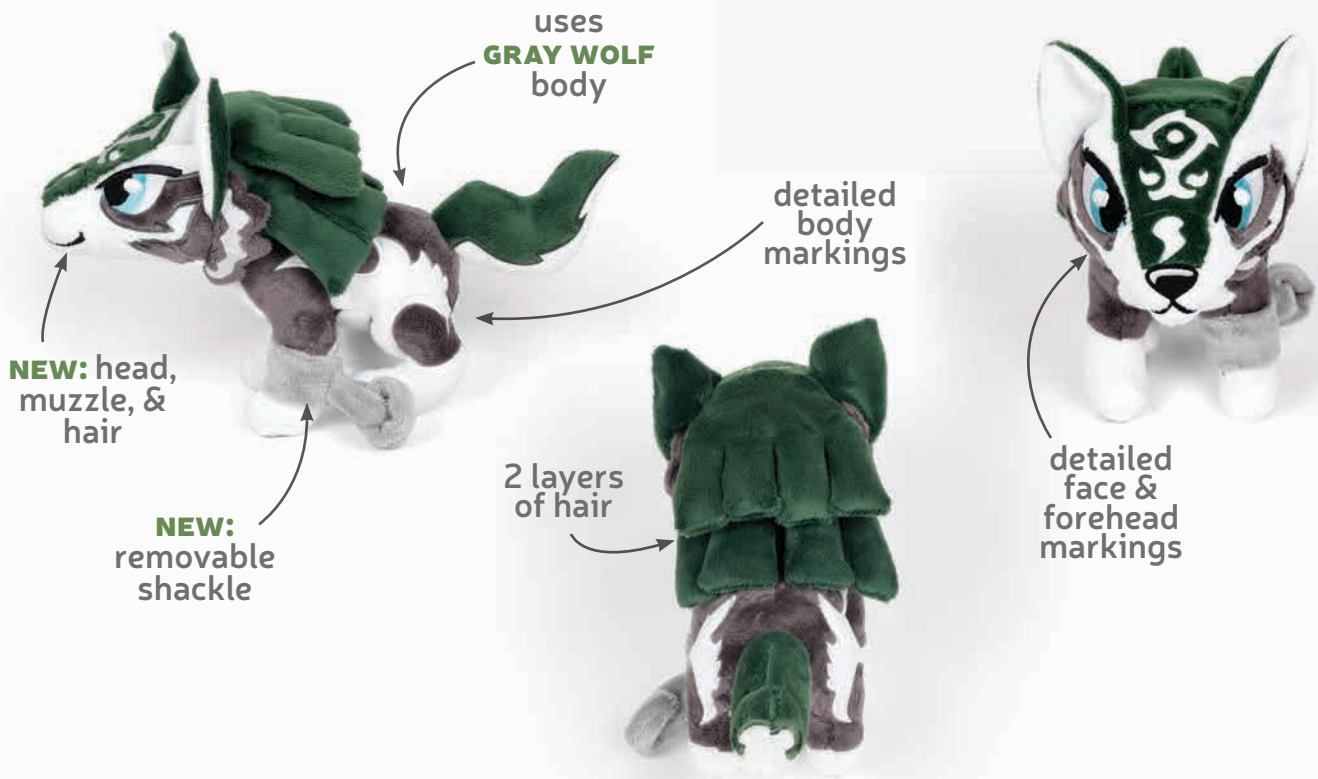
This pattern hack is meant to work alongside my **HYENA & WILD DOGS PLUSH SEWING PATTERN**. It is a set of extra templates that replaces the **GRAY WOLF** head and tail from the original pattern. And together you can make a standing version of Wolf Link. That is the wolf version of Link from The Legend of Zelda video game, *Twilight Princess*. Inside you'll find a guide for sewing the new head, ears, and tail and how they're incorporated into the original pattern.



+



=

**sew desu ne?**| [WWW.CHOLYKNIGHT.COM](http://WWW.CHOLYKNIGHT.COM) |

## DIFFICULTY:



This variation of the **HYENA & WILD DOG PLUSH GRAY WOLF** takes a bit more time than the original gray wolf. This version has more applique for all the body markings as well as the added hair in the back of the head.

## SKILLS USED:

- Fusible web applique
- Curved sewing
- Ladder stitch
- Sewing small pieces
- Matching notches and points
- Darts
- Gathering; gathering stitch

## MAKES:

**ONE PLUSH:** about 8" tall from bottom of feet to top of head, 9" long from tip of nose to back of body, and 4" wide from each side of head.

## FUSIBLE WEB:

- Fusible web adhesive is a sheet of adhesive with a paper backing. **Not to be confused with fusible interfacing**, which is adhesive attached to a fabric/fiber backing.
- Some common brands are **Pellon** & **HeatnBond**
- In countries outside the US, it may also be known as **bondaweb**
- It comes in **light** and **heavy duty** varieties. Lightweight strength is meant for applique you intend to sew later. Heavy duty versions are for a no-sew bond. If you try to sew them later your machine might have trouble penetrating the glue.

## MATERIALS & TOOLS:

- 1/4 yd. of white fabric for head and belly
- 1/4 of dark gray fabric for body
- 1/4 yd. of green fabric for forehead and hair
- 1/8 yd. (or 10" x 4") of light gray fabric for shackle and chain
- 5" x 8" scrap of fabric for poly pellet pouch
- 7" x 4" of gray applique fabric for face markings
- 7" x 7" of white applique fabric eye whites, body markings, and forehead markings
- 3" x 3" of blue applique fabric for irises
- 5" x 5" of black applique fabric for pupils, muzzle, and paws
- 6" x 7" of green applique fabric for tail fur
- 13" x 13" of light or heavy duty fusible web
- sewing thread to match main fabric and applique fabrics
- poly-fil stuffing
- poly pellets
- spoon or funnel for filling poly pellets
- basic sewing tools (sewing machine, scissors, iron, needles, pins, fabric marker, seam ripper)

## APPLIQUE FABRICS:

- Good applique fabrics include **flannel**, **cotton**, **felt**, **minky**, and **fleece**.
- Flannel and cotton are best for detailed applique with a lot of layers because they're thinner. Meanwhile felt, minky, and fleece are better for simpler applique like body markings.
- **Flannel** is used in the example instructions (page 7).



sew desu ne?

| WWW.CHOLYKNIGHT.COM |



## FABRIC CUTTING GUIDE:

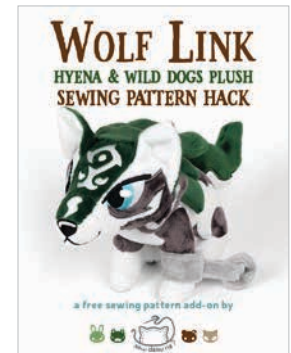
Follow the cutting guide below for what colors to cut from the **GRAY WOLF** pattern pieces from the original **HYENA & WILD DOGS PLUSH PATTERN**. First are the original pieces, then down below are the new pattern hack pieces for the new head and tail.

The new pieces have the same number as the original, but a new letter: **L FOR LINK**. For example the **HEAD FRONT (B1)** has been changed to **L1 FOR LINK**.

PATTERN LABEL	NAME	COLOR
ORIGINAL PATTERN PIECES		
<b>B7</b>	<b>BODY</b>	DARK GRAY
<b>B8</b>	<b>FRONT FOOT</b>	WHITE
<b>B9</b>	<b>BACK FOOT</b>	WHITE
<b>B10</b>	<b>BELLY</b>	WHITE
<b>B11</b>	<b>FRONT INNER LEG</b>	DARK GRAY
<b>B12</b>	<b>BACK INNER LEG</b>	DARK GRAY
<b>B13</b>	<b>FOOT BOTTOM</b>	WHITE
	<b>POLY PELLET POUCH</b>	SCRAP FABRIC



PATTERN HACK PIECES		
<b>L1</b>	<b>HEAD FRONT</b>	WHITE
<b>L2</b>	<b>FOREHEAD</b>	DARK GREEN
<b>L3</b>	<b>MUZZLE</b>	WHITE
<b>L4</b>	<b>EAR</b>	WHITE & DARK GREEN
<b>L6</b>	<b>HEAD BACK</b>	DARK GREEN
<b>L14</b>	<b>TAIL</b>	WHITE
<b>L16</b>	<b>NOSE BRIDGE</b>	DARK GREEN
<b>L18</b>	<b>CHEEK FLUFF</b>	DARK GRAY
<b>L19</b>	<b>UPPER HAIR</b>	DARK GREEN
<b>L20</b>	<b>LOWER HAIR</b>	DARK GREEN
<b>L21</b>	<b>SHACKLE</b>	LIGHT GRAY
<b>L22</b>	<b>CHAIN</b>	LIGHT GRAY



sew desu ne?

| [WWW.CHOLYKNIGHT.COM](http://WWW.CHOLYKNIGHT.COM) |

## fabric comparison:



## SUGGESTED MAIN FABRICS:

### MINKY OR FLEECE

Medium weight, plush fabrics with about 20%-30% stretch along the crosswise grain work best for this project. The varieties shown to the left are some good options and names to look for. Try to avoid heavyweight versions of fleece that are intended for outdoor apparel or they may cause trouble for the detailed areas.

You can also use non-stretch fabrics (such as felt), but be aware that the curves will be more difficult to sew and the result will look different. The plush will become more elongated and the edges will look sharper.

10" of minky stretches to 13"  
= 30% stretch



MINKY

VS.

FELT



sew desu ne?

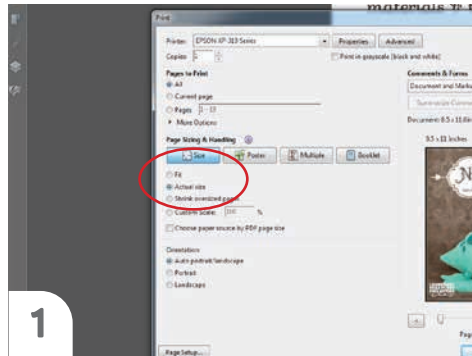
| [WWW.CHOLYKNIGHT.COM](http://WWW.CHOLYKNIGHT.COM) |

## PRINTING THE PATTERN:

Set your computer to print the pattern pages: **PAGES 22-27.**

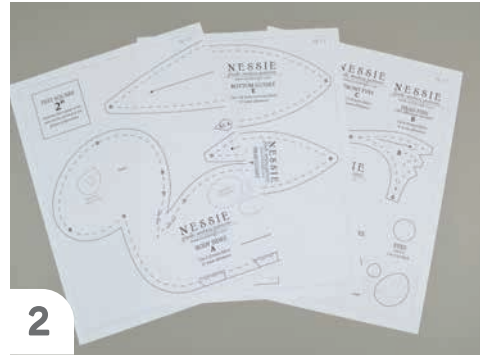
If you're unfamiliar with printing and assembling a .pdf pattern, read the steps to follow.

For the best results, use a .pdf reader like **ADOBE READER**. That's what is shown here and will give you the most control over the settings.



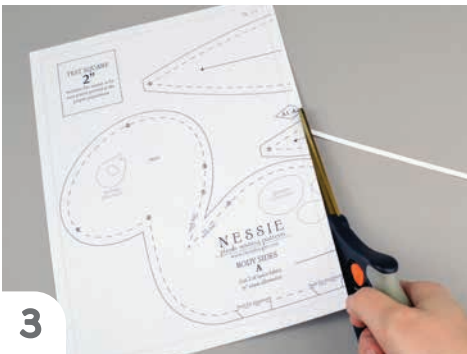
1

At the print dialog box, check the box that says print at "Actual Size" or 100%. Any other selection (such as "Fit to page") will distort the pattern so it's slightly larger or smaller and we don't want that.



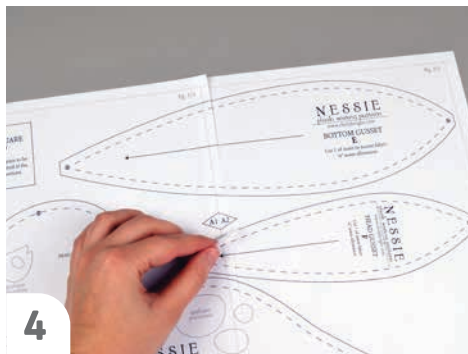
2

Print the pages needed for the file. You might have one or more. Either way, be sure you have the full collection by noting the page numbers in the corner.



3

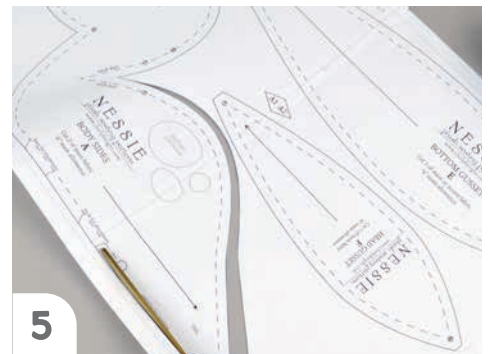
It's likely your printer will have a margin that ensures your image doesn't print to the very edge. Assembly will be easier if you trim off this blank margin edge. This will give you pages that overlap slightly during assembly. If you trim across the gray outline boxes, this will give you pages that don't overlap but rather butt against each other.



4

To line up the pattern pages, match up the corresponding diamond shapes. Each diamond will have a letter, so it's simply a matter of matching A1 to A2, B3 to B4 and so on. The faint gray lines indicate the border of every page, you should be able to line those up as well. When the diamond goes together, tape it in place.

If you have many pages, it's easier to tape up the pages into rows first. Then tape the rows together into a full block.



5

You can trace the patterns onto a different paper, or you can also just cut them straight from the printer paper -- be sure that each piece is fully taped together along the joins so they don't fall apart when you cut them.

sew desu ne?

| WWW.CHOLYKNIGHT.COM |

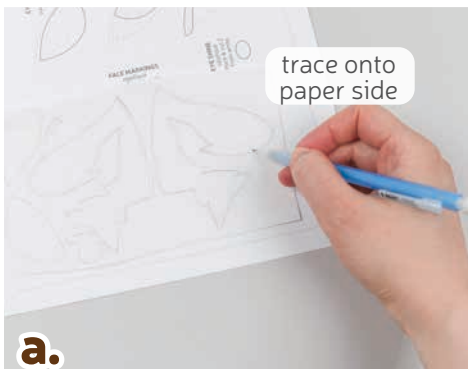
## BEFORE YOU BEGIN:

- Briefly read the project instructions so you know what to expect.
- If desired, mark the cut fabric pieces with the markings and symbols from the pattern. Or wait until the applicable step before transferring.
- Note that a ¼" seam allowance is used throughout the project, which is included in the pattern templates.

## PART 1: THE APPLIQUE

Use the new applique templates found on pages 25-27 to replace the **eyes** from the original **HYENA & WILD DOG PLUSH PATTERN**.

### 1. PREP THE EYE APPLIQUE



- Grab your fusible web and applique templates. Trace the pieces for the eyes of your wolf. You should have:
  - **face markings** (2, gray)
  - **eye whites** (2, white)
  - **irises** (2, blue)
  - **pupils** (2, black)
  - **eye shines** (2, white)
- Fuse the bumpy (adhesive) side of the fusible web onto the applique fabrics.
- Cut out your applique pieces and grab your **HEAD FRONT** piece (L1). Grab the **face marking** applique piece. Set your paper pattern on top of the head front piece. Align the applique piece on top where the placement markings are. Next, carefully pull the paper pattern away while holding the applique piece in place.
- Fuse the applique pieces with your iron. Use a press cloth, such as a scrap piece of cotton. This will help protect any polyester or fuzzy fabrics from melting or scorching.



sew desu ne?

| [WWW.CHOLYKNIGHT.COM](http://WWW.CHOLYKNIGHT.COM) |





add the eye whites next



layer the irises on top



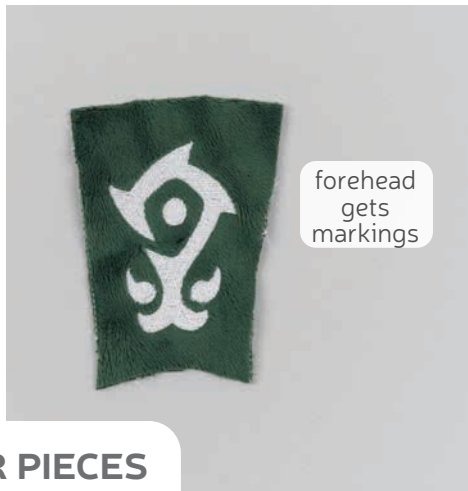
add the pupils & eye shines last

## 2. SEW THE EYE APPLIQUE

- Add the **eye white** pieces next. Use the paper pattern and photos as a placement guide.
- Next align the **irises** and fuse the pieces in place.
- Lastly add the smallest pieces, the **pupils** and **eye shines**.



body back pieces get markings



forehead gets markings



2 cheek fluff pieces get markings

## 3. APPLIQUE THE OTHER PIECES

→ Also take this time to applique your other fabric pieces. Link has a lot of body markings so it may take a bit of time.

- The **BODY** (B7) will get **body markings**. You'll need 2 in white.
- The **FOREHEAD** (L2) will get **forehead markings**. You'll need 1 of each piece in white.
- The **CHEEK FLUFF** (L18) will get **cheek fluff markings**. You'll need 2 in white. Fuse the applique to two of the cheek fluff pieces so you have a mirrored pair. Leave the other two blank.

sew desu ne?

| WWW.CHOLYKNIGHT.COM |



## 4. FINISH THE APPLIQUE

- a. The **TAIL** (L14) will get **tail fur**. You'll need 2 in green.



- b. For the muzzle, refer to the steps from the original **HYENA & WILD DOG PLUSH SEWING PATTERN**. Refer to step 1 for joining the nose bridge for the **GRAY WOLF**.

Repeat this with your new Link pieces. Join the **NOSE BRIDGE** (L16) to the **MUZZLE** (L3) sewing between **points 3 and 3**.

Next, refer to step 5 for adding the applique to your new muzzle.

The **MUZZLE** (L3) will get a **nose and mouth** in black and a **nose shine** in white.

The **NOSE BRIDGE** (L16) will get a **nose bridge marking** in white.

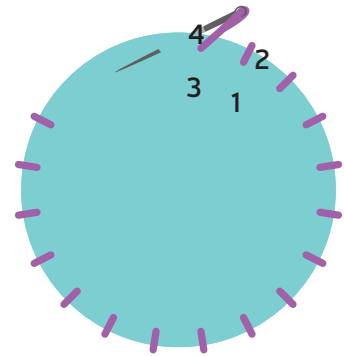
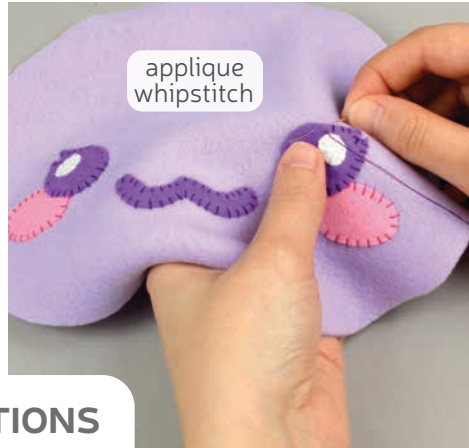
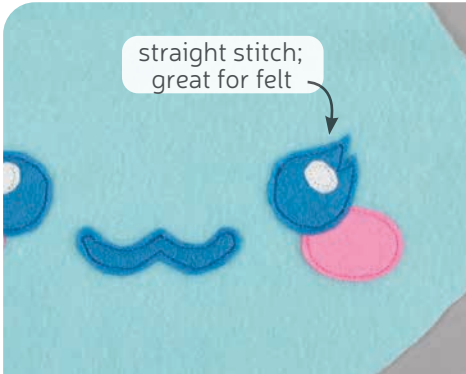


If you used heavy duty fusible web, you can keep the pieces fused without sewing, or you can sew them in place a number of ways. I've used a zigzag stitch here.

➔ **Refer to the next step for some other applique options.**

sew desu ne?

| [WWW.CHOLYKNIGHT.COM](http://WWW.CHOLYKNIGHT.COM) |



## 5. OTHER APPLIQUE OPTIONS

- Other good options for applique include a straight stitch, which involves sewing around the edge of the applique pieces with a straight stitch using matching thread -- about 1/8" in from the edge.
- You can also applique by hand; I prefer a whipstitch. Thread a hand-sewing needle with some matching thread and knot it. Bring the thread up from the back of the project; about 1/8" in from the edge of the applique shape. Bring it down perpendicular from the curve, just outside of the applique shape. This completes one stitch.
- For the next stitch, bring the needle back up about 1/8" away from the previous stitch and 1/8" in from the edge just as in the first stitch. Once again, bring it down just outside the applique shape. Continue this way until you've sewn around the shape.

## PART 2: THE HEAD

The assembly for the head is very similar to the gray wolf from the original **HYENA & WILD DOG PLUSH PATTERN**. Use the new head templates to replace the ones from the original pattern.

## 6. ATTACH THE MUZZLE & FOREHEAD

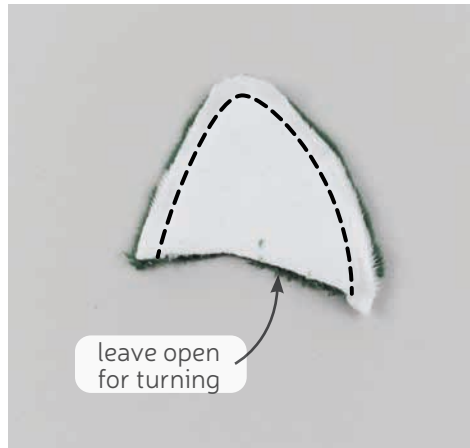
Refer to steps 7 through 9 from the original **HYENA & WILD DOG PLUSH PATTERN** to attach the muzzle and forehead. Refer to the original for more detailed instructions, but here is a brief overview:

- STEP 7:** sew the **FOREHEAD** (L2) to the **NOSE BRIDGE** (L16) from point 2 to 2.
- STEPS 8-9:** sew the **HEAD FRONT** (L1) to the **MUZZLE** (L3) from point 2 to 4.



sew desu ne?

| WWW.CHOLYKNIGHT.COM |



## 7. SEW THE EARS

Before moving onto **STEP 10** from the original instructions, stop here for a moment while we assemble and attach the ears.

- Grab your **EAR** pieces (L4). Take one from your white fabric and one from your green fabric. Line them up with right sides facing and the raw edges matching up,
- Sew the pieces together along the long pointed edges. Leave the short straight edges free for turning the piece right side out.
- Repeat this with your remaining ear pieces so you have two total. Trim the excess seam allowance at the tip of the ear to reduce bulk, and turn the ears right side out. Define the points with a chopstick or similar turning tool. When complete you should have a mirrored pair as shown.

## 8. PREP THE EAR FOR BASTING

- Take one of your sewn **EARS** and make a clip into the seam allowance at the inner corner. This guide is marked on the paper pattern as well as **point 1**. Clip up to **point 1** and stop. This will help the ear bend around the corner of the head so the ear makes a 3D shape.



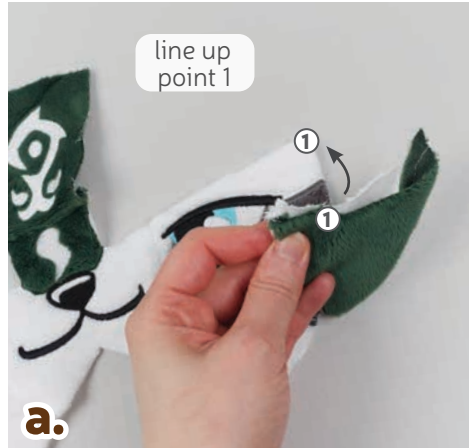
- Grab your head front so far as well as your ear. If you haven't already, note the **ear placement lines** found on the paper pattern for the head front. We'll be sewing the ear around the upper corner of the head front. The short end will go down the forehead area and the longer end will go down the side. **Point 1** will match up precisely at the corner.

sew desu ne?

| [WWW.CHOLYKNIGHT.COM](http://WWW.CHOLYKNIGHT.COM) |

## 9. BASTE THE EAR

- a.** Grab your **EAR** (L4) and align the open edge within the **placement lines** so the shorter side matches with the top of the **HEAD FRONT** (L1). **Point 1** should match up at the corner. Make sure the inner ear fabric is facing down and pin the ear to the head front.



- b.** Baste the ear in place within the seam allowance from the edge of the ear to **point 1**.
- c.** Now grab the other open edge of the ear and align it down the side of the head front piece. Make sure right sides are facing and pin the ear to the head front.
- d.** Sew from **point 1** down to the end of the ear.
- e.** When complete, you should have an ear that's attached around the upper corner of the head. It will stand up and make a 3D shape. Repeat this with your other head front piece and your other ear piece for both sides.



## 10. SEW THE FOREHEAD

- a.** Refer to **STEPS 10 AND 11** from the original **HYENA & WILD DOG PLUSH PATTERN** to join the head front to the forehead. Refer to the original for more detailed instructions, but here is a brief overview:
- b. STEP 10:** sew the **FOREHEAD** (L2) to the **HEAD FRONT** (L1) from **point 1 to 2**.
- c. STEP 11:** sew the **NOSE BRIDGE** (L16) to the **MUZZLE** (L3) from **point 2 to 3**



sew desu ne?

| [WWW.CHOLYKNIGHT.COM](http://WWW.CHOLYKNIGHT.COM) |





## 11. SEW THE CHEEK FLUFFS

This step will replace **STEP 12** from the original **HYENA & WILD DOGS PATTERN**.

- Grab your **CHEEK FLUFF** pieces (L18). Take one that has the markings applied and another that's blank. Align the applied piece with the blank piece so right sides are facing and the raw edges match up.
- Sew the fluff pieces together around the jagged edge. Leave the slightly curved edge free for turning the piece right side out later.
- Trim the excess seam allowance around the corners and curves of your seam. This will reduce bulk and increase flexibility of the seam so it turns more cleanly. Repeat this with your other cheek fluff pieces so you have a matching pair.



## 12. BASTE THE CHEEK FLUFFS

This step will replace **STEP 13** from the original **HYENA & WILD DOGS PATTERN**.

- Turn your **CHEEK FLUFF** pieces (L18) right side out. Define the points with a chopstick or similar turning tool.
- If you haven't already, note the **cheek fluff placement lines** found on the paper pattern for the **HEAD FRONT** (L1). Align the open edge of the cheek fluff within these **placement lines** so the applied marking is facing upward.
- Now flip the cheek fluff so it's pointing inward and the applied marking is facing downward. It will overlap slightly with the ear. Align the raw edges of the cheek fluff so they're flush with the head and pin the layers together. Baste the cheek fluff to the head front to hold them in place for future steps. Repeat this with your other cheek fluff piece for a mirrored pair as shown.

sew desu ne?

| WWW.CHOLYKNIGHT.COM |



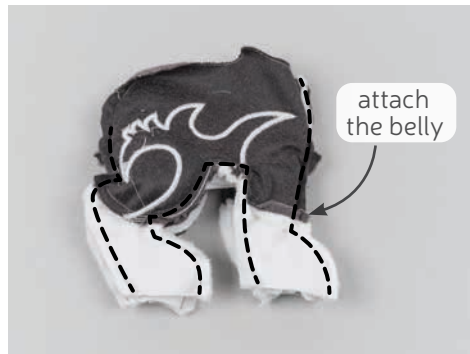
### 13. ATTACH THE HEAD BACK

Refer to **STEPS 19 THROUGH 22** from the original **HYENA & WILD DOG PLUSH PATTERN** to sew and join the **HEAD BACK** (L6) to the head front. Refer to the original for more detailed instructions, but here is a brief overview:

- a. **STEP 19:** sew the head back pieces together down to the top of the *opening for turning marking*.
- b. **STEPS 20-21:** sew the head back to the head front all the way around the outer edge. Stop at *point 5* on each side. This will leave the bottom edge free.  
**STEP 22:** sew the *chin dart* by going through *points 6, 5, and 4* and ending at the fold beneath the mouth.
- c. Turn the head right side out to complete.

## PART 3: THE BODY

The assembly for the body is exactly the same as the gray wolf from the original **HYENA & WILD DOG PLUSH PATTERN**. The only difference is in the colors and the applique body markings from back in step 3 of these instructions.



### 14. SEW THE BODY

Refer to **STEPS 23 THROUGH 40** from the original **HYENA & WILD DOG PLUSH PATTERN** to sew the body and join it to the head. Refer to the original for more detailed instructions, but here is a brief overview:

- a. **STEP 23-26:** sew the **FRONT** and **BACK FEET** (B8 & B9) to the **FRONT** and **BACK INNER LEGS** (B11 & B12). Sew these to the **BELLY** (B10).  
Take your remaining front and back feet pieces and join these to the **BODY** (B7).
- b. **STEPS 27-32:** attach the belly and inner legs to both body pieces going all around the legs and chest. Leave the bottoms of the feet open.
- c. **STEPS 33-34:** attach the head to the body at the neck.  
**STEPS 38-40:** sew the back and attach the **FOOT BOTTOMS** (B13).

sew desu ne?

| WWW.CHOLYKNIGHT.COM |

## 15. STUFF THE BODY

Refer to **STEPS 41 THROUGH 45** from the original **HYENA & WILD DOG PLUSH** pattern to stuff and close up the body. Refer to the original for more detailed instructions, but here is a brief overview:

- **STEP 41:** make the poly pellet pouch.
- **STEPS 42-43:** stuff the body and head.
- **STEPS 44-45:** ladder stitch the head closed.



## PART 4: THE EXTRAS

This part includes the added extras that are attached by hand. This includes the **HAIR**, **TAIL**, **SHACKLE**, and **CHAIN**.



## 16. SEW THE HAIR PIECES

- Grab your **HAIR** pieces (L19 & L20). Take two matching ones and line them up with right sides facing and the raw edges aligning.
- The locks of the hair are very close together, so to sew them accurately you'll want to trace the seam line from the paper pattern. Trim away the seam allowance from the paper, then use this as a tracing guide on the wrong side of the fabric. Trace around the paper using a fabric marker.
- Sew the pieces together along the traced lines. For the **UPPER HAIR** (L19) you'll be sewing entirely around the shape.  
For the **LOWER HAIR** (L20), leave an **opening for turning** in the center top as shown in the photo and as marked on the paper pattern.

sew desu ne?

| [WWW.CHOLYKNIGHT.COM](http://WWW.CHOLYKNIGHT.COM) |





## 17. TRIM & TURN THE HAIR PIECES

- Trim the seam allowance around the sharp corners and curves of your **HAIR** pieces. Trim around the outer corners to reduce bulk. Clip very closely into the inner corners between the locks. Trim as close as you can into the corners without cutting your stitching. This will increase the flexibility in those areas and allow the piece to turn more cleanly.
- To turn the **UPPER HAIR** piece right side out, cut a short slit through one layer of the fabric only. Cut it centered around the base of the hair, but you can also refer to the **cutting guide** on the paper pattern for extra help.
- Turn the hair pieces right side out through the openings. Define the corners with a chopstick or similar turning tool.



## 18. ATTACH THE LOWER HAIR

- If desired, you can stuff the hair lightly with stuffing. This will give it some more body and fullness. If you prefer the hair to be thinner and floppier, leave it unstuffed.
- Take your **LOWER HAIR** piece (L20) and tuck in the seam allowances from the **opening for turning**. Align this edge across the back of the head. It's placed about 1" up from the neck at the center back. However you can also refer to the **placement guide** on the paper pattern for extra help.
- Ladder stitch this edge of the hair to the back of the head along the top and underneath.

sew desu ne?

| WWW.CHOLYKNIGHT.COM |





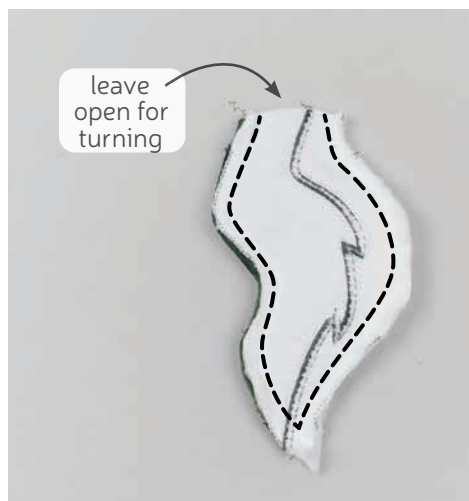
## 19. ATTACH THE UPPER HAIR

- Grab your **UPPER HAIR** piece (L19). Take this piece and align it over the top of your wolf's head. The opening you've cut should be facing down. Align it just behind the **forehead marking** and centered between the **EARS**.
- Ladder stitch the upper hair in place. While sewing the top edge between the ears, stitch close to the seam from before in step 16.
- As you sew towards the back, flip up the hair and stitch underneath. Go around the cut you made back in step 17.

## 20. SEW THE TAIL

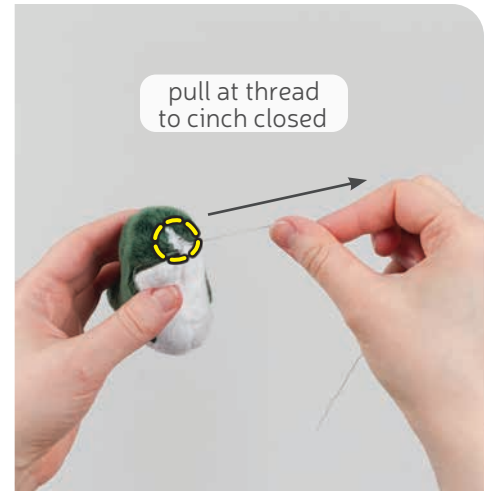
This will replace the tail steps from the original instructions (steps 46-53).

- Take your **TAIL** pieces (L14). Align them with right sides facing and the raw edges matching up. Sew the pieces together along the long curved edge. Leave the short straight edge open for turning the piece right side out later.
- Trim the excess seam allowance around the tight corners and curves of the piece to reduce bulk. Turn the tail right side out through the opening then define the point with a chopstick or similar turning tool.



sew desu ne?

| WWW.CHOLYKNIGHT.COM |



## 21. CINCH THE TAIL CLOSED

- Stuff the **TAIL** (L14) semi-firmly with stuffing. Be sure to get small bits in the tip of the tail so it stays looking pointy and doesn't deflate later.
- Cinch the tail closed by sewing a gathering stitch around the opening of the tail. Sew about  $\frac{1}{4}$ " away from the raw edge all the way around.
- Pull at the gathering stitch to cinch it closed. Sew a few knots into the center of the cinched end to hold it closed.

### GATHERING:

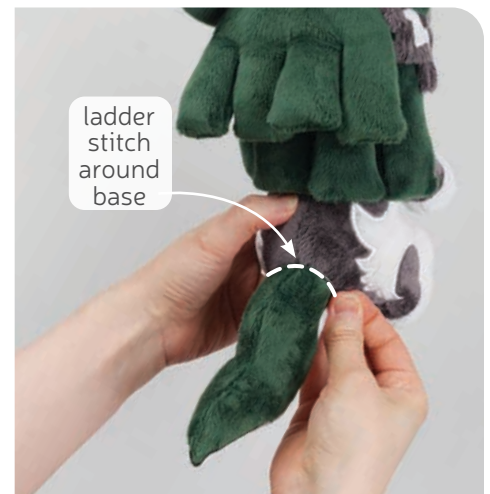
The process of shortening the length of a piece of fabric by sewing long stitches through it. When the thread is pulled, it forms small folds that ruffle the fabric.

### GATHERING STITCH:

A long version of the running stitch, which is a stitch done by weaving the needle in and out of a length of fabric going along a line. The long stitches (about  $\frac{1}{4}$ " -  $\frac{1}{2}$ " long) gather the fabric when pulled later.

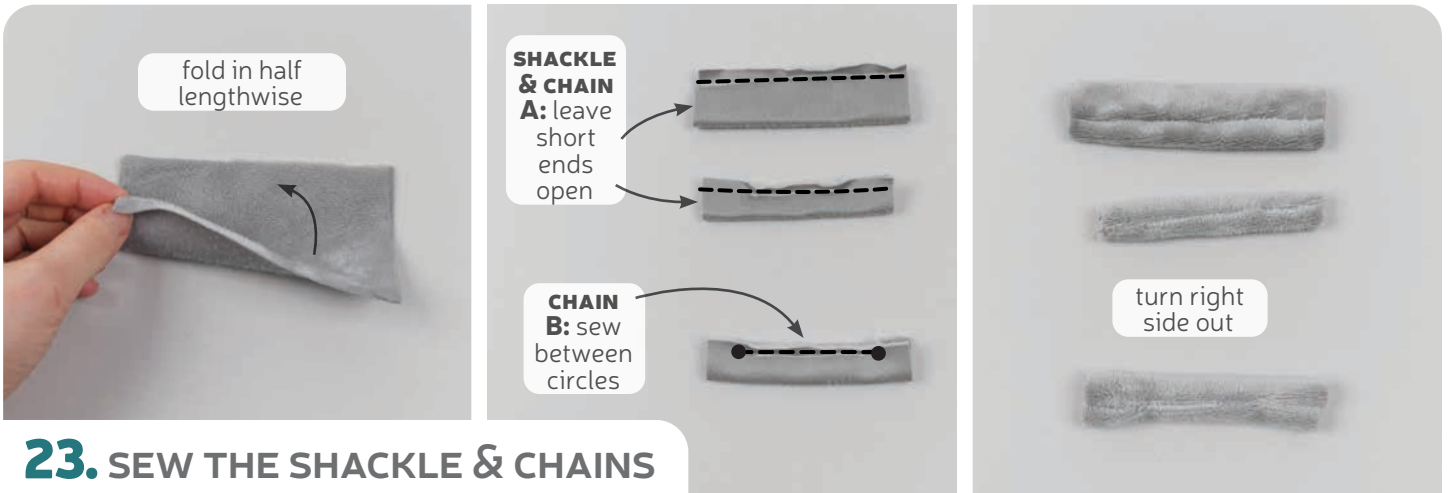
## 22. ATTACH THE TAIL

- Take your tail and align the cinched end onto the back of the body. Align it over the back of your wolf's body, around **point 17**.
- Attach the tail using a ladder stitch around the cinched end.



sew desu ne?

| [WWW.CHOLYKNIGHT.COM](http://WWW.CHOLYKNIGHT.COM) |

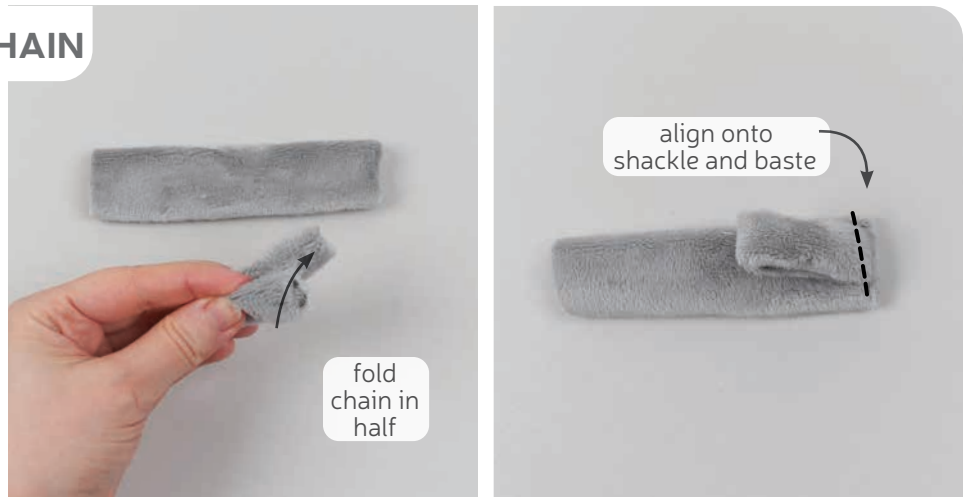


## 23. SEW THE SHACKLE & CHAINS

- Grab your **SHACKLE** and **CHAIN** pieces (L21 & L22). Fold them in half lengthwise with right sides facing so they make an even skinnier strip.
- FOR THE SHACKLE:** sew the piece together along the long edge. Leave the two short ends free.  
**FOR ONE OF THE CHAINS:** sew the piece together along the long edge. Leave the two short ends free. We'll call this **chain A** for the next step.  
**FOR THE OTHER CHAIN:** sew the piece together along the long edge, but start and stop between the **circle markings** as marked on the paper pattern. We'll call this **chain B** for later in step 24.
- Turn all the tubes right side out through the openings you left.

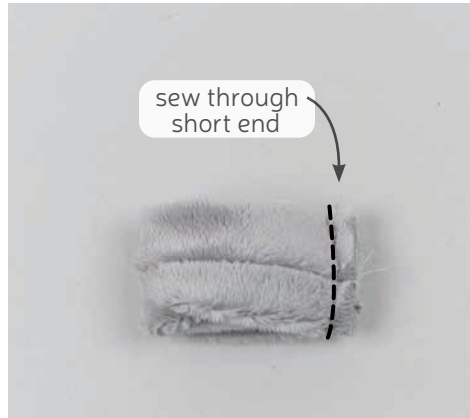
## 24. BASTE THE FIRST CHAIN

- Grab your **SHACKLE** piece (L21) and lay it on your work surface so the seam side is facing down. Take your **chain A** piece (the one with the narrow open ends). We're going to join it to the shackle. Fold **chain A** in half so the raw ends match up. Take the raw ends and align it onto one raw end of the shackle and center it there. Pin the fabrics together.
- Baste the **chain A** piece to the shackle through all the layers.



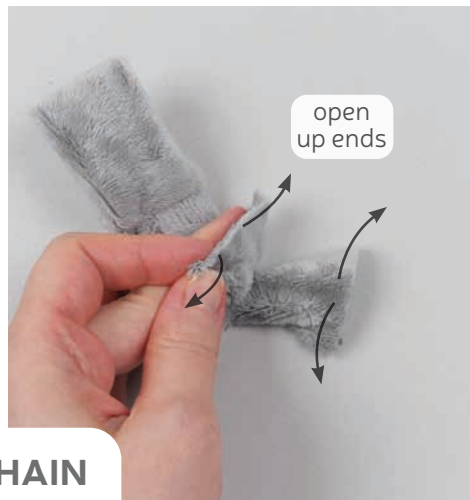
sew desu ne?

| WWW.CHOLYKNIGHT.COM |



## 25. SEW THE SHACKLE INTO A LOOP

- Take your **SHACKLE** piece (P) and line up the open edges so the **chain A** piece is sandwiched inside. Pin the edges together.
- Sew the shackle along this short edge. You may want to sew very slowly or use just the hand wheel of your machine to make it through all the layers.
- Turn the shackle right side out, and the loop of your first chain should be secured in the seam.



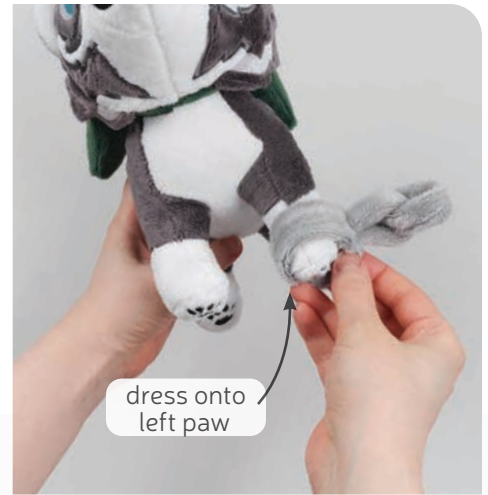
## 26. JOIN THE SECOND CHAIN

- Grab your **chain B** piece (the one with the wide open ends). We're going to loop it around the first chain and join the ends. Start by looping it through the first chain.
- Open up the raw ends of the chain so they make a straight line. Now match up the ends so right sides are facing and the edges match up.
- Sew the pieces together along this edge.

sew desu ne?

| WWW.CHOLYKNIGHT.COM |





## 27. SEW THE CHAIN CLOSED

- Tuck in the seam allowances in the chain opening, and then straighten the piece out. It should make a clean loop shape again.
- Ladder stitch the opening in the chain closed.
- Now you can loop the shackle around the paw of your plush! To be character accurate, loop it around Link's left paw.



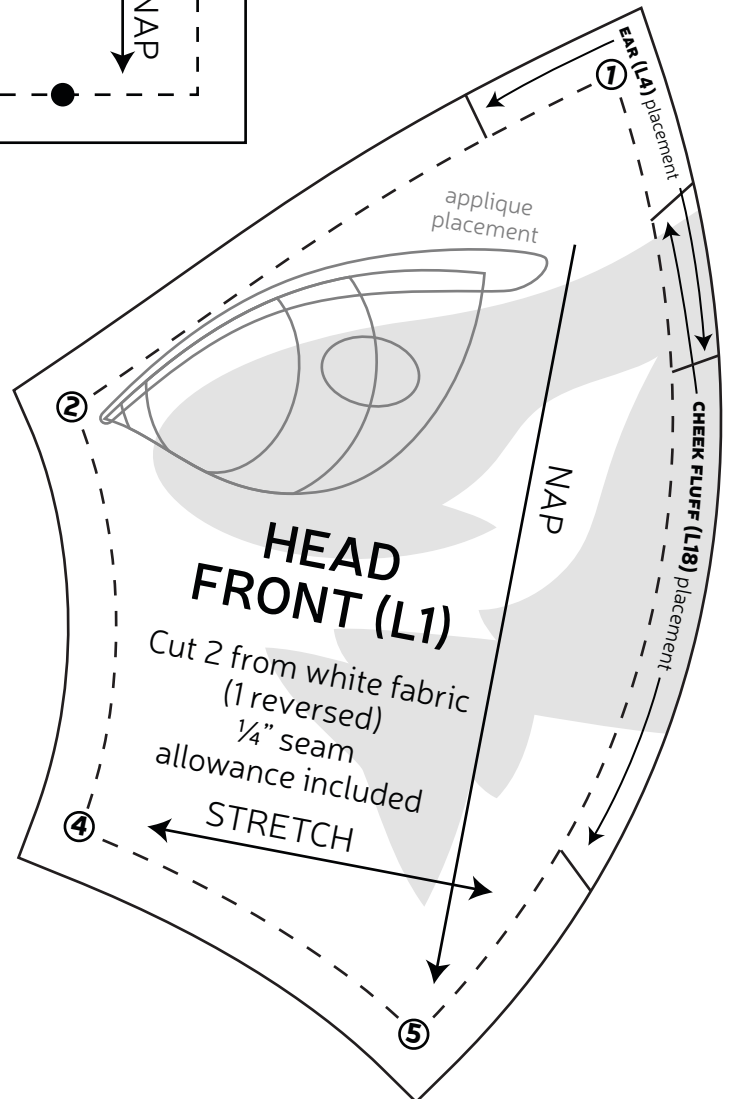
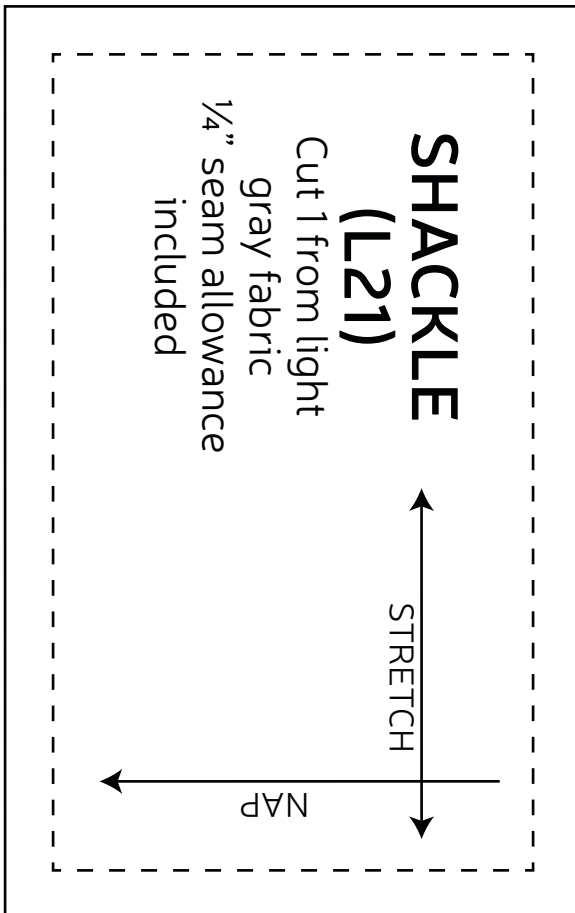
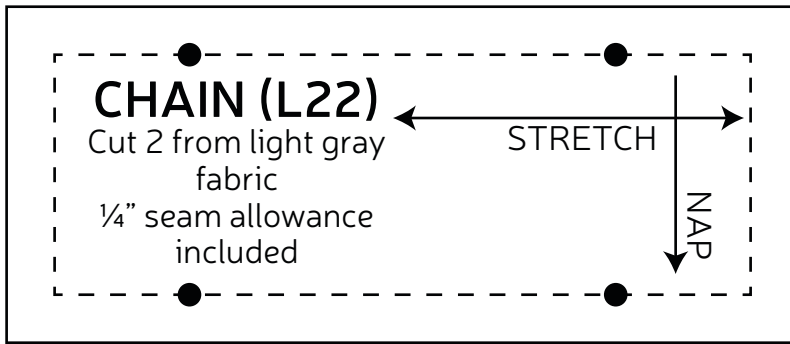
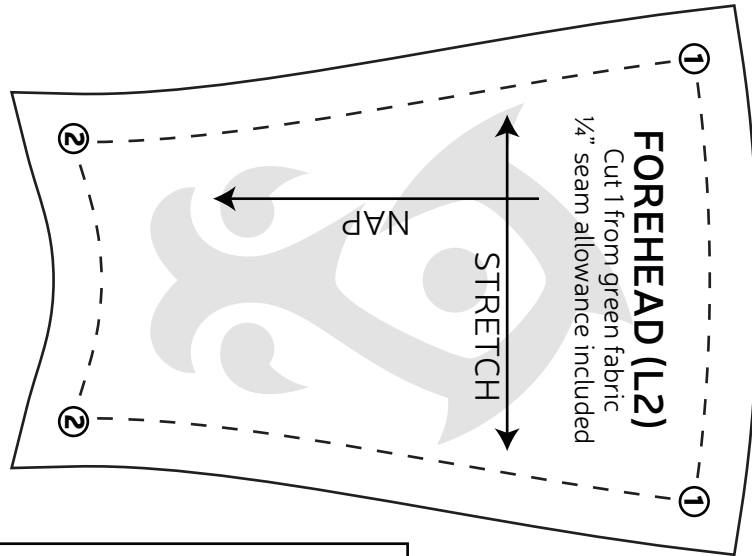
**CONGRATS!**  
This completes your plush! Now go save Hyrule!

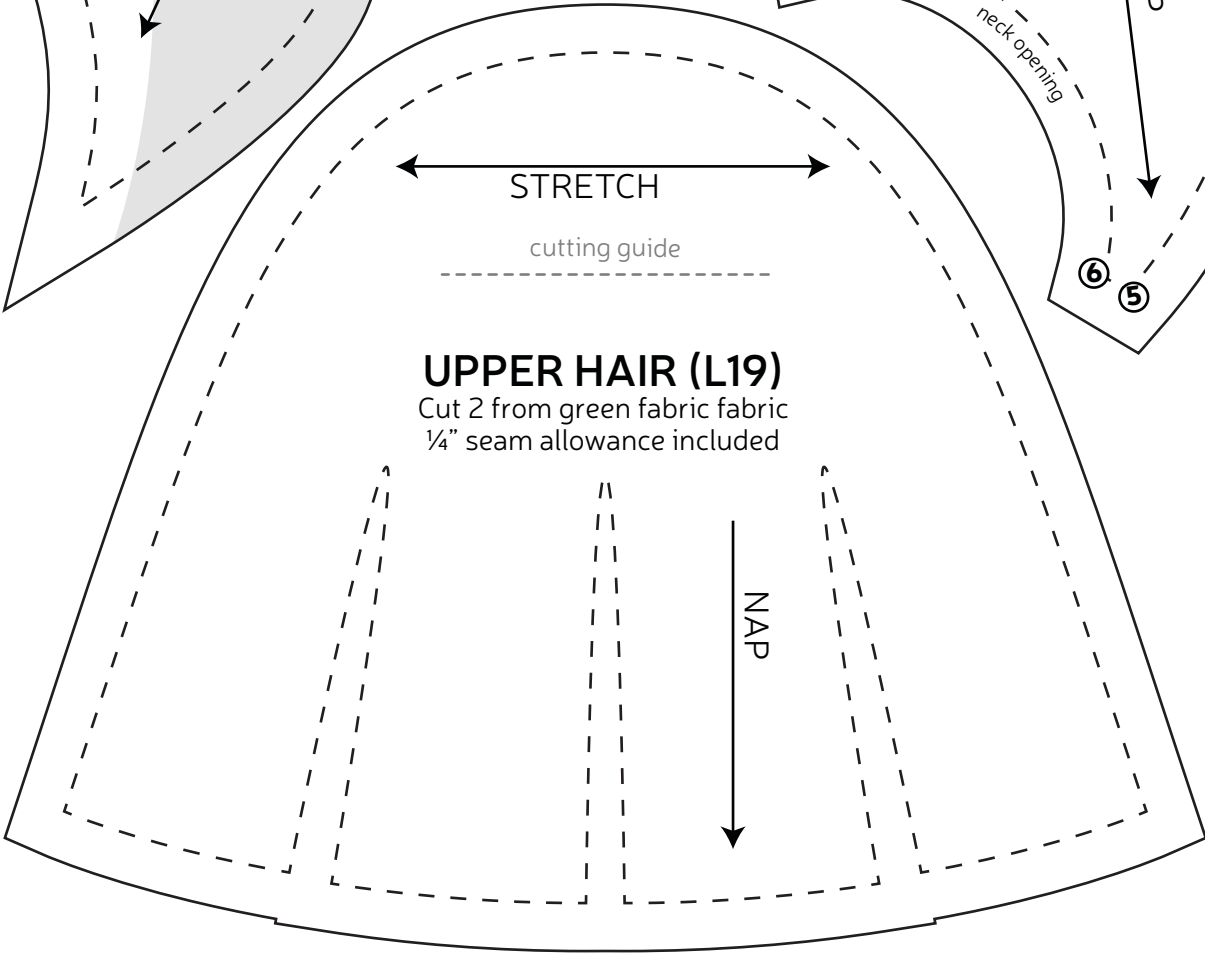
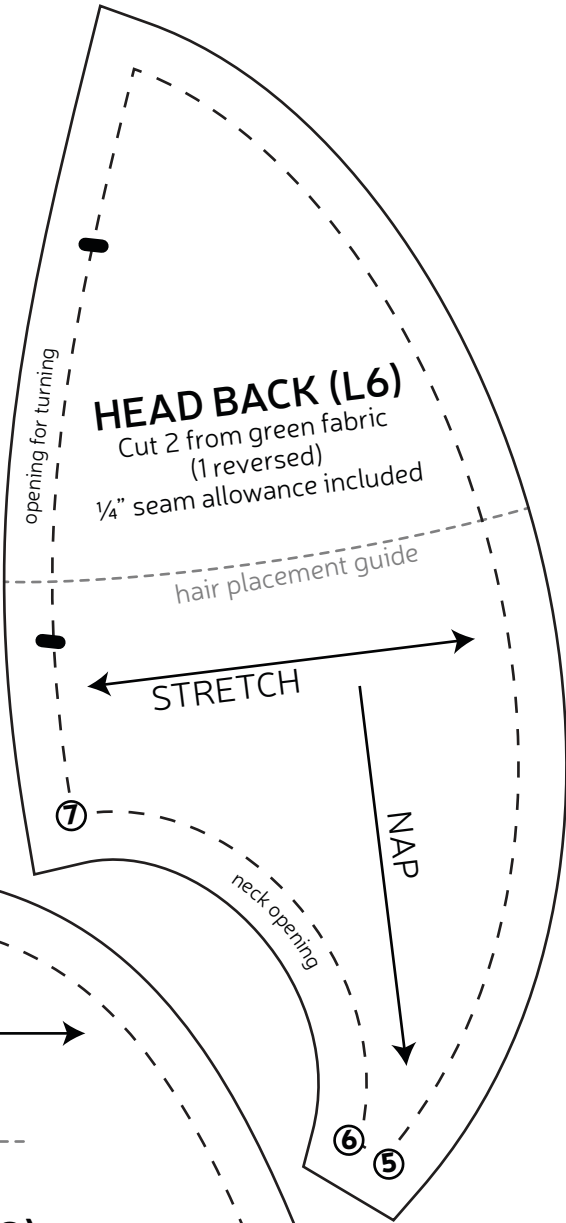
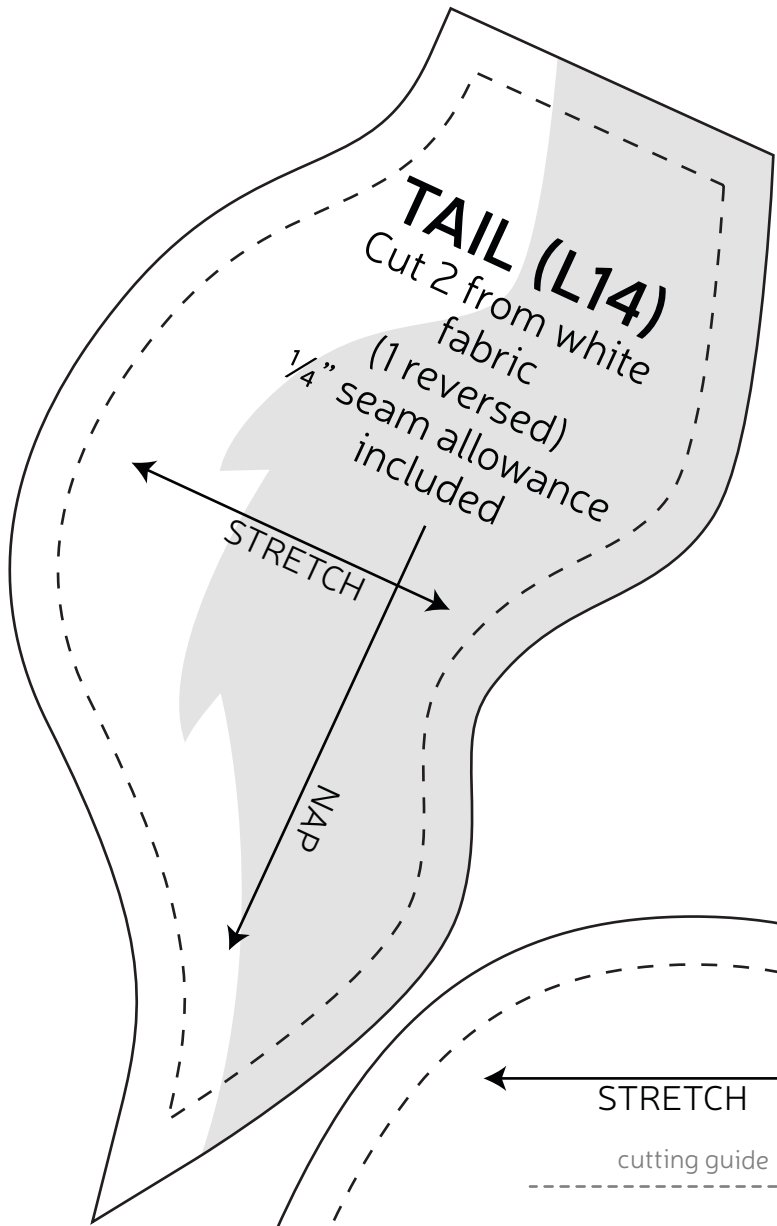
**sew desu ne?**

| [WWW.CHOLYKNIGHT.COM](http://WWW.CHOLYKNIGHT.COM) |

# TEST SQUARE 2"

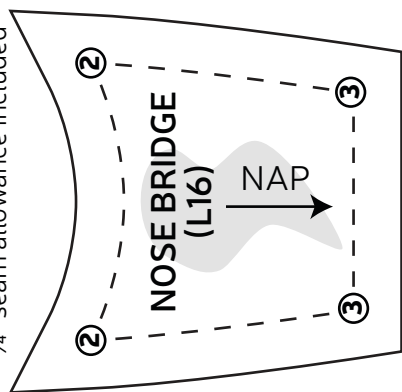
measure this square to  
be sure you've printed  
at the proper  
proportions





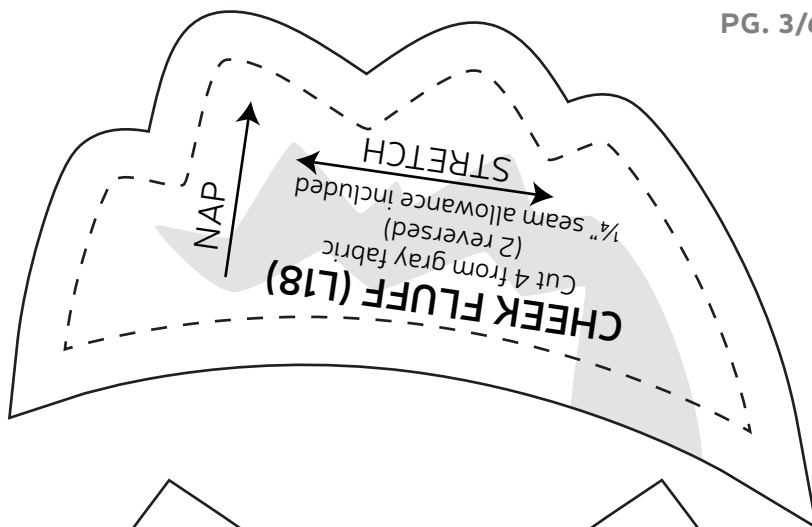
## NOSE BRIDGE (L16)

Cut 1 from green fabric  
1/4" seam allowance included



**CHEEK FLUFF (L18)**  
Cut 4 from gray fabric  
(2 reversed)  
1/4" seam allowance included  
STRETCH

→ 1/4" seam allowance included  
(2 reversed)  
Cut 4 from gray fabric

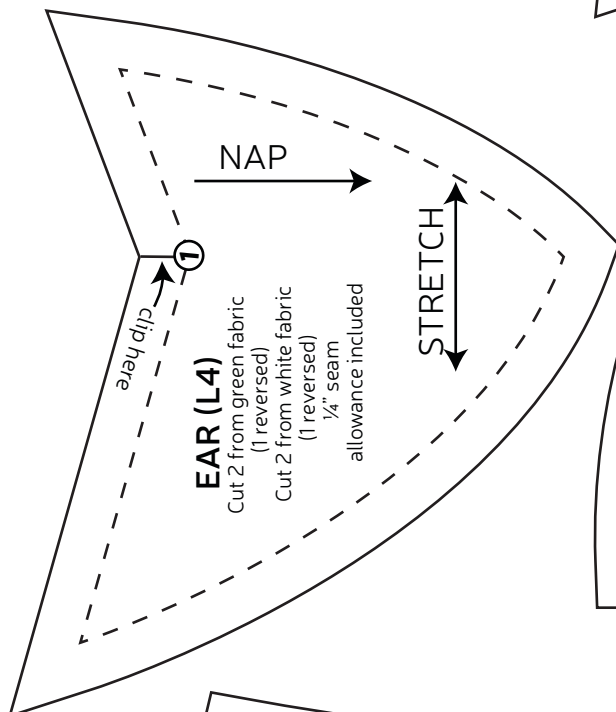


## EAR (L4)

Cut 2 from green fabric  
(1 reversed)

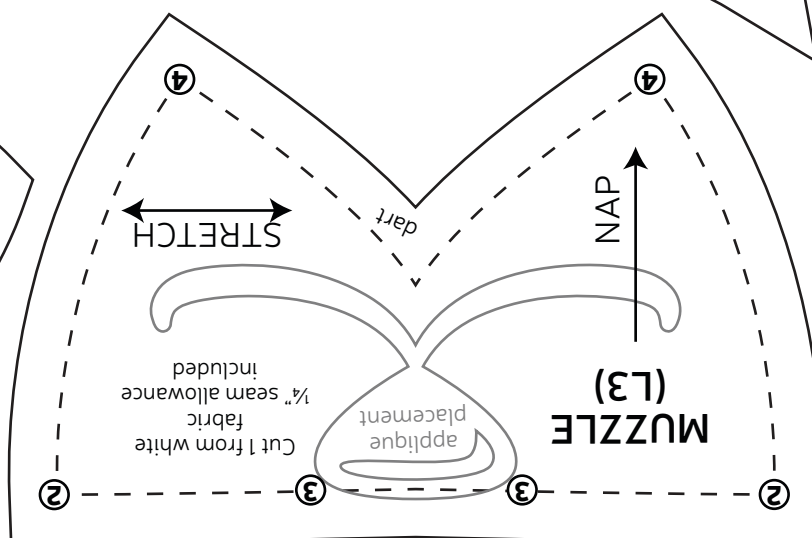
Cut 2 from white fabric  
(1 reversed)

1/4" seam  
allowance included



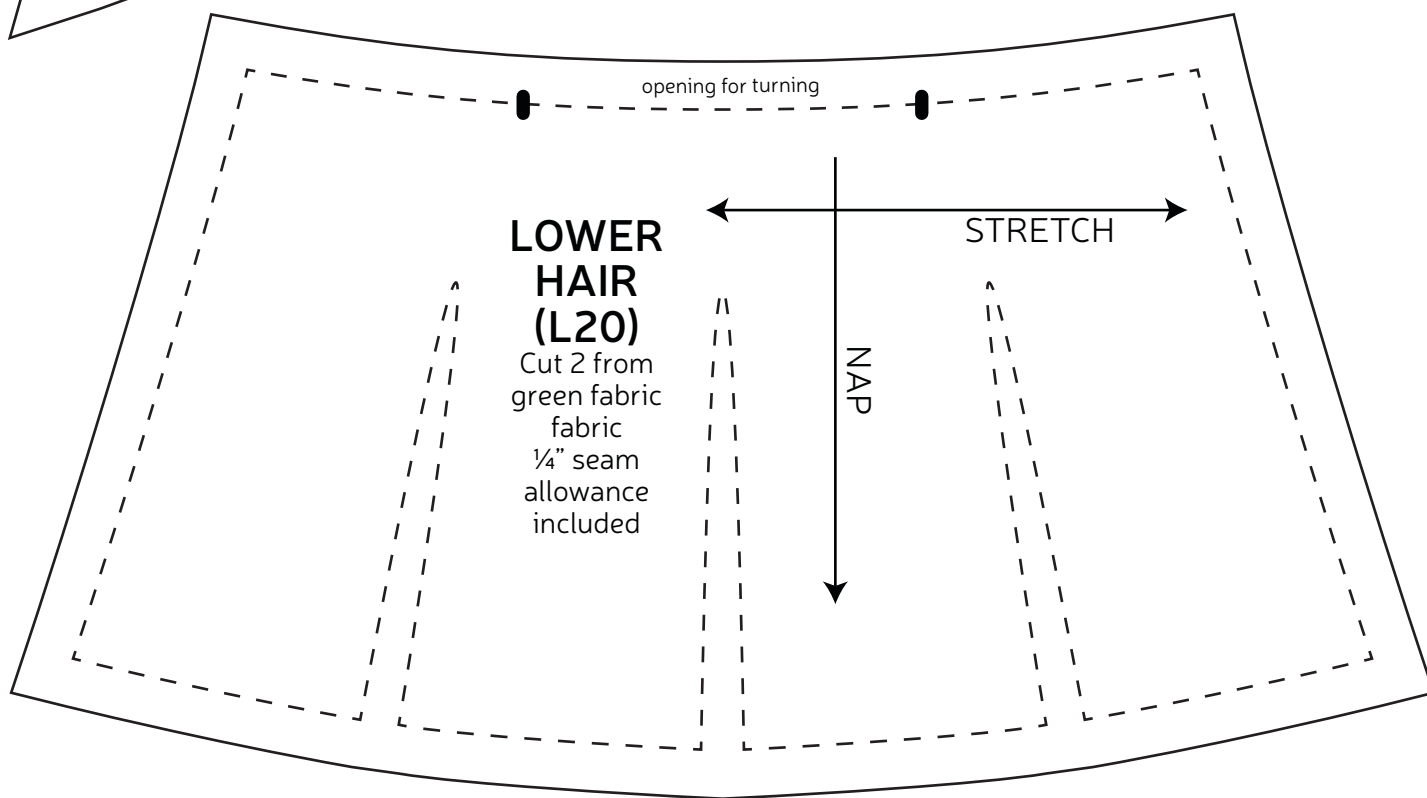
MUZZLE (L3)

Cut 1 from white fabric  
1/4" seam allowance  
included

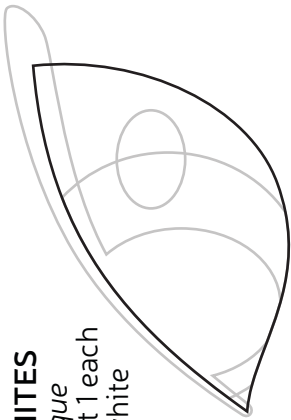


**LOWER  
HAIR  
(L20)**

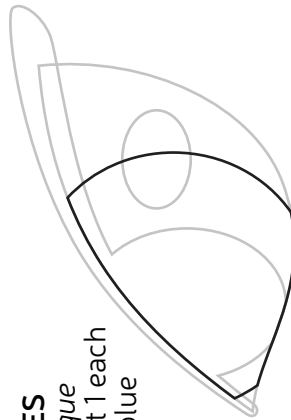
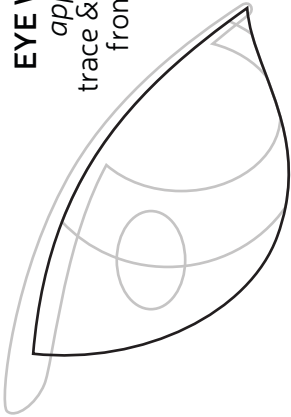
Cut 2 from  
green fabric  
fabric  
¼" seam  
allowance  
included



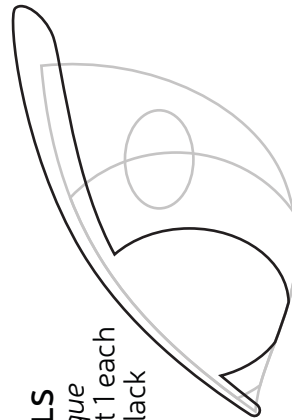
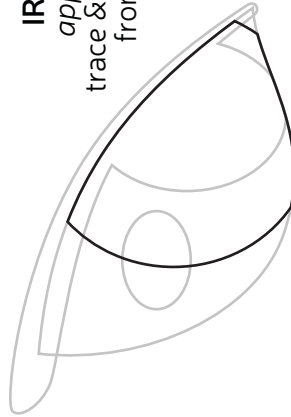




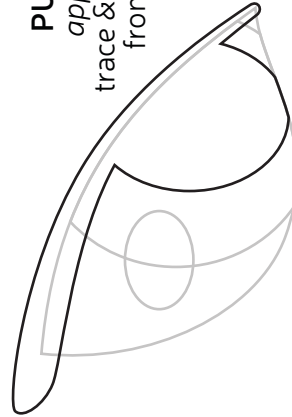
**EYE WHITES**  
*applique*  
trace & cut 1 each  
from white



**IRISES**  
*applique*  
trace & cut 1 each  
from blue

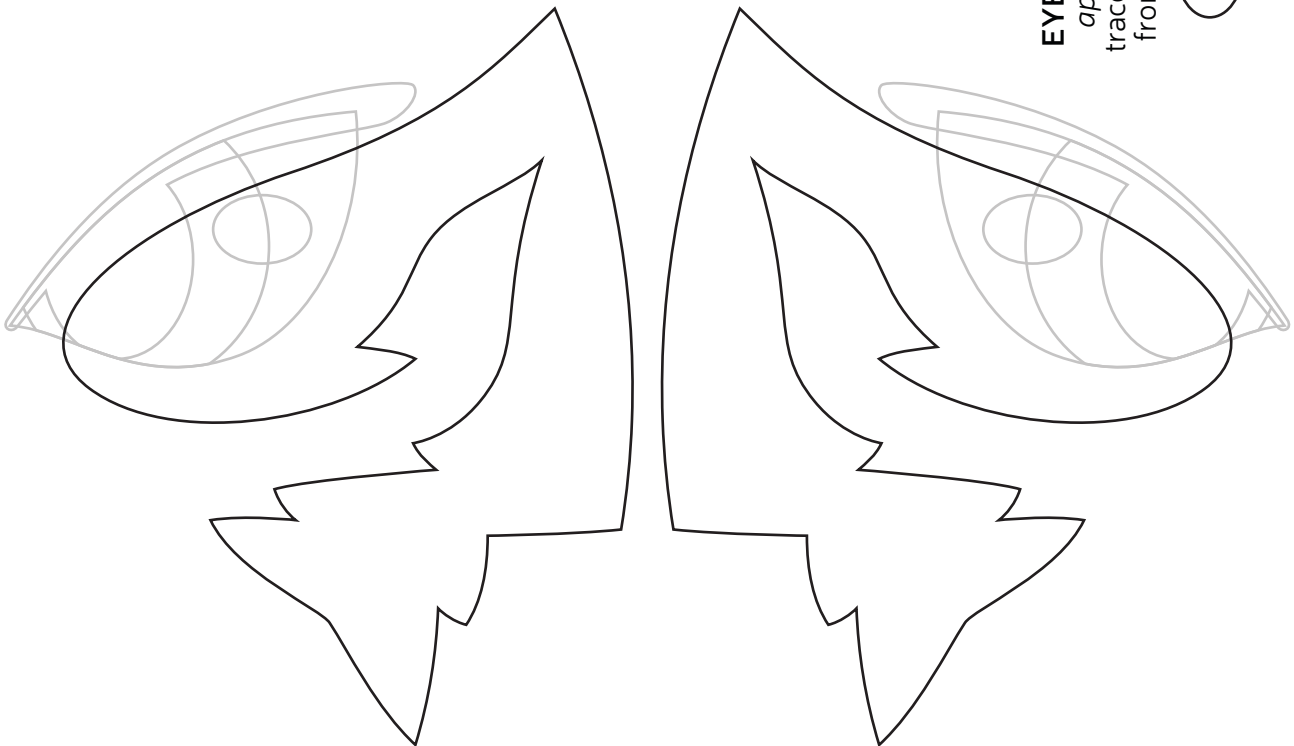


**PUPILS**  
*applique*  
trace & cut 1 each  
from black

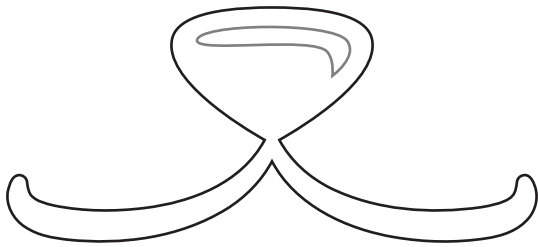


**FACE MARKINGS**  
*applique*  
trace & cut 1 each  
from gray

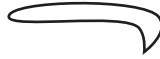
**EYE SHINE**  
*applique*  
trace & cut 2  
from white



**NOSE & MOUTH**  
*applique*  
trace & cut 1 from  
black



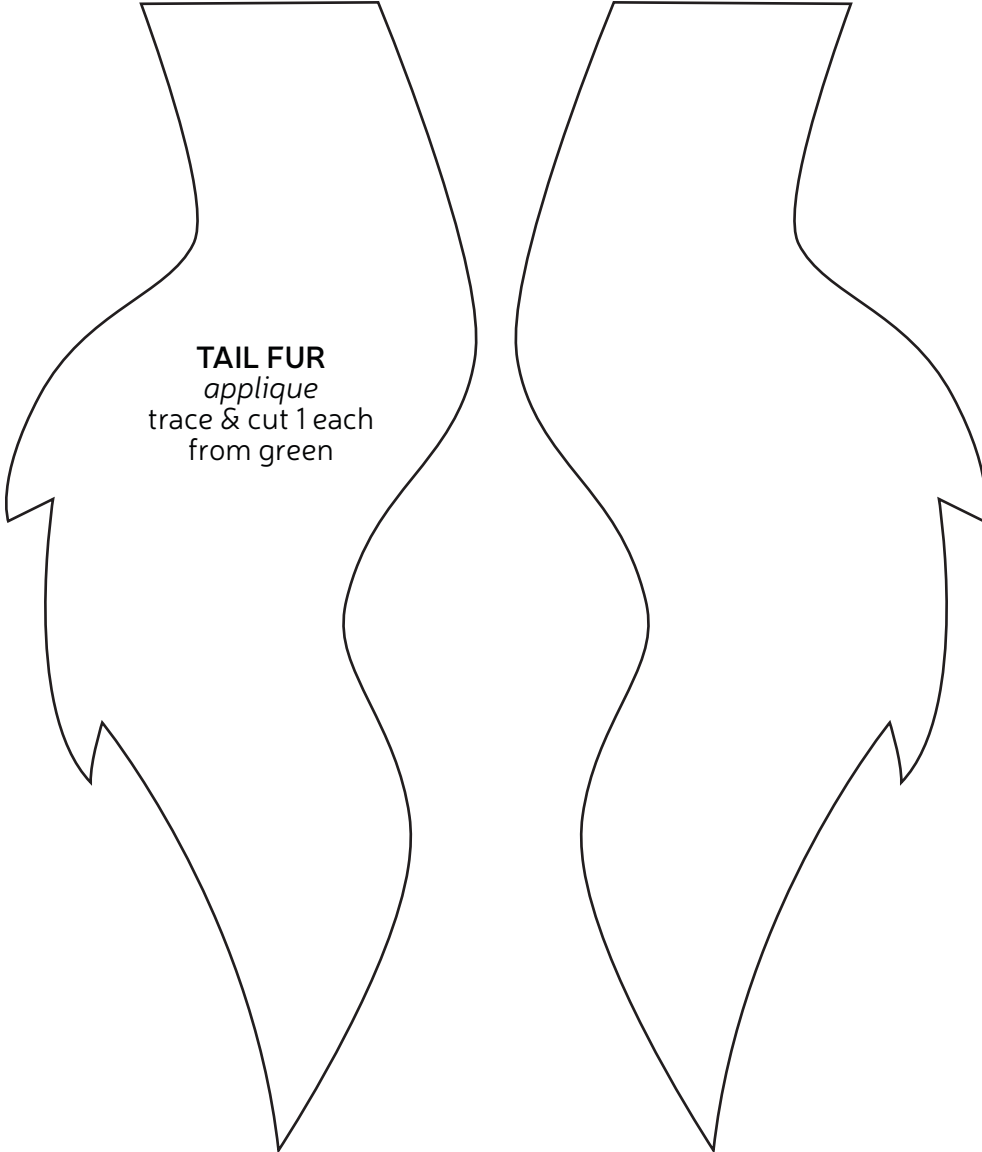
**NOSE SHINE**  
*applique*  
trace & cut 1  
from white



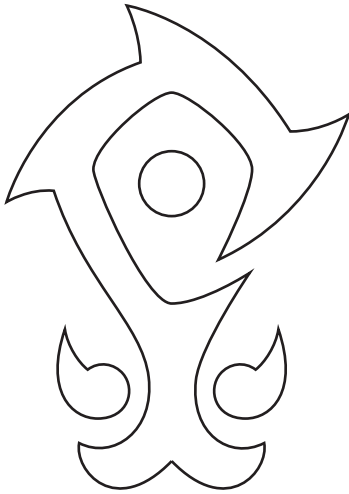
**CHEEK  
FLUFF  
MARKING**  
*applique*  
trace & cut 1  
each from  
white



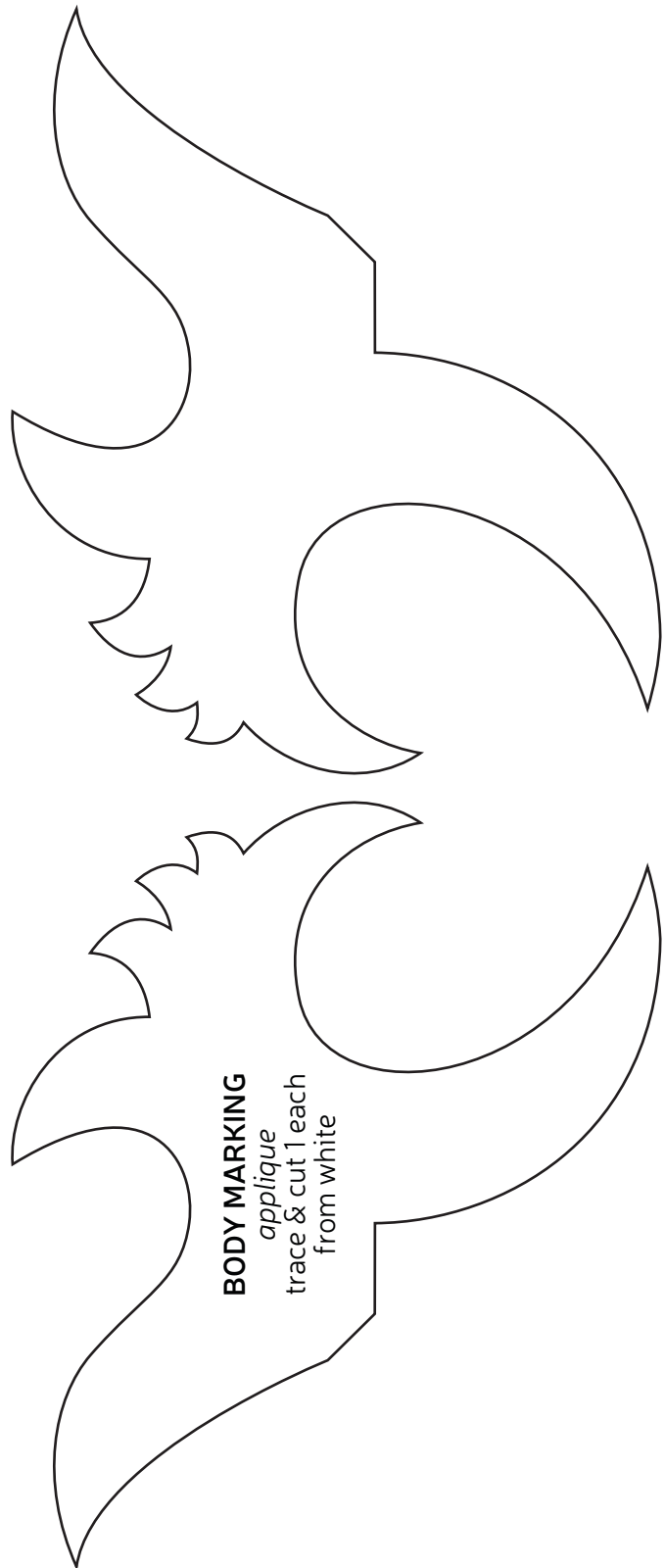
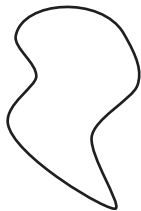
**TAIL FUR**  
*applique*  
trace & cut 1 each  
from green



**FOREHEAD  
MARKINGS**  
*applique*  
trace & cut 1 each  
from white



**NOSE BRIDGE  
MARKING**  
*applique*  
trace & cut 1  
from white



**BODY MARKING**  
*applique*  
trace & cut 1 each  
from white