

FALKOR

LONG NECK CUDDLE PLUSH
sewing pattern hack



a free sewing pattern add-on by



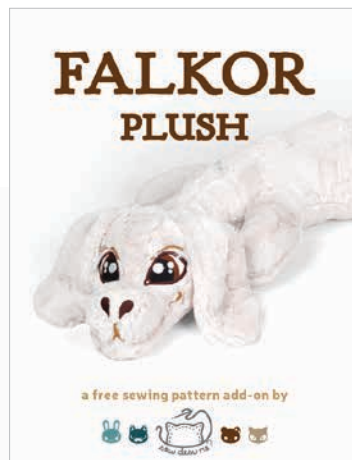
FALKOR PLUSH PATTERN HACK

This pattern hack is meant to work alongside my **LONG NECK CUDDLE PLUSH SEWING PATTERN**. It is a set of extra templates that replaces the **EASTERN DRAGON** head from the original pattern. And together you can make Falkor, the majestic Luck Dragon from the classic movie, *The Neverending Story*.

Inside you'll find a guide for sewing the new head and ears and how they're incorporated into the original pattern.



+



=



NEW:
puppy
ears

uses
**EASTERN
DRAGON**
body

uses **10MM
LUXE CUDDLE
SHANNON**
minky

NEW:
puppy
head



about 36"
long body!

NEW:
puppy
nose



sew desu ne?

| WWW.CHOLYKNIGHT.COM |

DIFFICULTY:

This variation of the **LONG NECK CUDDLE PLUSH EASTERN DRAGON** is slightly easier because it doesn't have as many detailed pieces. However it's still a challenge because it is so large and there is lots of curved sewing in the face and body.

SKILLS USED:

- Fusible web applique
- Curved sewing
- Ladder stitch
- Sewing small pieces
- Matching notches and points
- Darts

MAKES:

ONE PLUSH: about 36" long from nose to tail tip, 7" wide from back leg to back leg, and 5" tall from belly to top of back

FUSIBLE WEB:

- Fusible web adhesive is a sheet of adhesive with a paper backing.
Not to be confused with fusible interfacing, which is adhesive attached to a fabric/fiber backing.
- Some common brands are **Pellon** & **HeatnBond**
- In countries outside the US, it may also be known as **bondaweb**
- It comes in **light** and **heavy duty** varieties. Lightweight strength is meant for applique you intend to sew later. Heavy duty versions are for a no-sew bond. If you try to sew them later your machine might have trouble penetrating the glue.

MATERIALS & TOOLS:

- 1 yd. of fluffy cream fabric for main body
- 1/8 yd. (or 5" x 3") of smooth cream fabric for nose
- 4" x 4" of dark brown applique fabric for outer eyes and nostrils
- 3" x 3" of white applique fabric for eye whites and eye shines
- 3" x 3" of brown applique fabric for irises
- 3" x 3" of black applique fabric for pupils
- 4" x 4" of light brown applique fabric for mouth
- 7" x 7" of light or heavy duty fusible web
- sewing thread to match main fabric and applique fabrics
- poly-fil stuffing
- basic sewing tools (sewing machine, scissors, iron, needles, pins, fabric marker, seam ripper)

APPLIQUE FABRICS:

- Good applique fabrics include **flannel, cotton, felt, minky, and fleece**.
- Flannel and cotton are best for detailed applique with a lot of layers because they're thinner. Meanwhile felt, minky, and fleece are better for simpler applique like body markings.
- **Flannel** is used in the example instructions (page 7).



sew desu ne?

| WWW.CHOLYKNIGHT.COM |

FABRIC CUTTING GUIDE:

Follow the cutting guide below for what colors to cut from the **EASTERN DRAGON** pattern pieces from the original **LONG NECK CUDDLE PLUSH PATTERN**. First are the original pieces, then down below are the new pattern hack pieces for the new head.

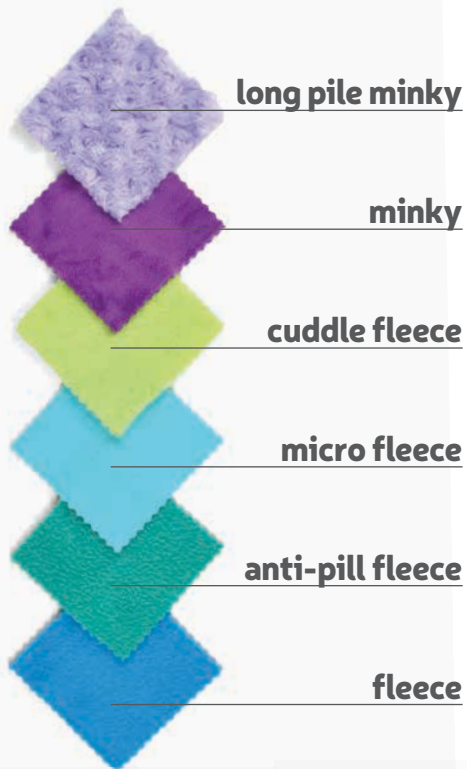
PATTERN LABEL	NAME	COLOR
ORIGINAL PATTERN PIECES		
B3	BODY BACK	FLUFFY CREAM
B4	BELLY	FLUFFY CREAM
B5	FRONT ARM	FLUFFY CREAM
B6	INNER LEG	FLUFFY CREAM
B7	BACK SPIKES	FLUFFY CREAM
B8	FOOT BOTTOM	FLUFFY CREAM
PATTERN HACK PIECES		
F1	HEAD SIDE	FLUFFY CREAM
F2	HEAD BACK	FLUFFY CREAM
F9	FOREHEAD	FLUFFY CREAM
F10	HEAD BOTTOM	FLUFFY CREAM
F11	EARS	FLUFFY CREAM
F12	NOSE	SMOOTH CREAM



sew desu ne?

| WWW.CHOLYKNIGHT.COM |

fabric comparison:



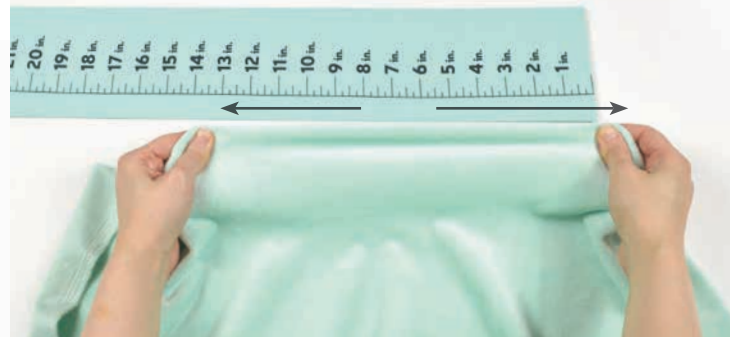
SUGGESTED MAIN FABRICS:

MINKY OR FLEECE

Medium weight, plush fabrics with about 20%-30% stretch along the crosswise grain work best for this project. The varieties shown to the left are some good options and names to look for. Try to avoid heavyweight versions of fleece that are intended for outdoor apparel or they may cause trouble for the detailed areas.

You can also use non-stretch fabrics (such as felt), but be aware that the curves will be more difficult to sew and the result will look different. The plush will become more elongated and the edges will look sharper.

10" of minky
stretches to 13"
= 30% stretch



MINKY

VS.

FELT



sew desu ne?

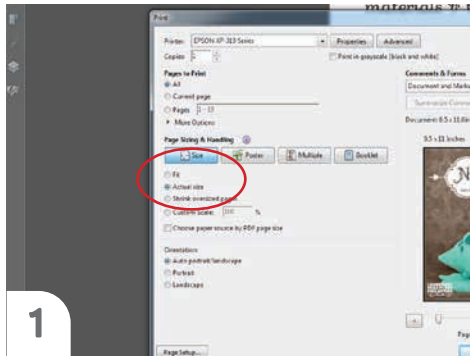
| WWW.CHOLYKNIGHT.COM |

PRINTING THE PATTERN:

Set your computer to print the pattern pages: pages 14-16.

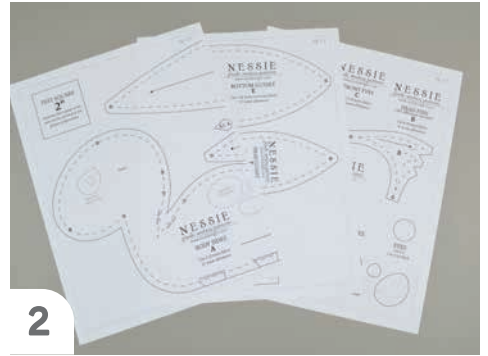
If you're unfamiliar with printing and assembling a .pdf pattern, read the steps to follow.

For the best results, use a .pdf reader like **ADOBE READER**. That's what is shown here and will give you the most control over the settings.



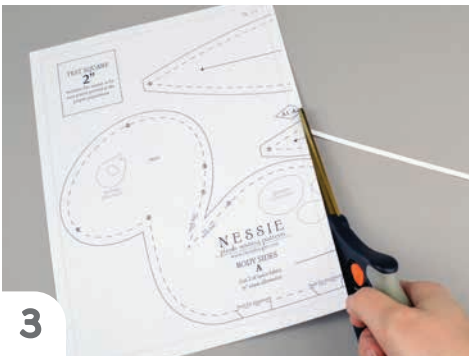
1

At the print dialog box, check the box that says print at "Actual Size" or 100%. Any other selection (such as "Fit to page") will distort the pattern so it's slightly larger or smaller and we don't want that.



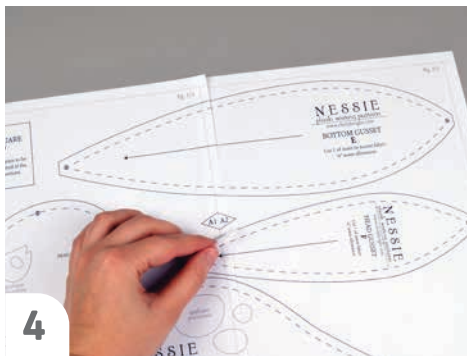
2

Print the pages needed for the file. You might have one or more. Either way, be sure you have the full collection by noting the page numbers in the corner.



3

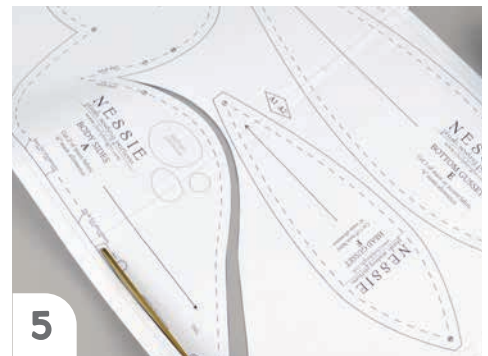
It's likely your printer will have a margin that ensures your image doesn't print to the very edge. Assembly will be easier if you trim off this blank margin edge. This will give you pages that overlap slightly during assembly. If you trim across the gray outline boxes, this will give you pages that don't overlap but rather butt against each other.



4

To line up the pattern pages, match up the corresponding diamond shapes. Each diamond will have a letter, so it's simply a matter of matching A1 to A2, B3 to B4 and so on. The faint gray lines indicate the border of every page, you should be able to line those up as well. When the diamond goes together, tape it in place.

If you have many pages, it's easier to tape up the pages into rows first. Then tape the rows together into a full block.



5

You can trace the patterns onto a different paper, or you can also just cut them straight from the printer paper -- be sure that each piece is fully taped together along the joins so they don't fall apart when you cut them.

sew desu ne?

| WWW.CHOLYKNIGHT.COM |

BEFORE YOU BEGIN:

- Briefly read the project instructions so you know what to expect.
- If desired, mark the cut fabric pieces with the markings and symbols from the pattern. Or wait until the applicable step before transferring.
- Note that a ¼" seam allowance is used throughout the project, which is included in the pattern templates.

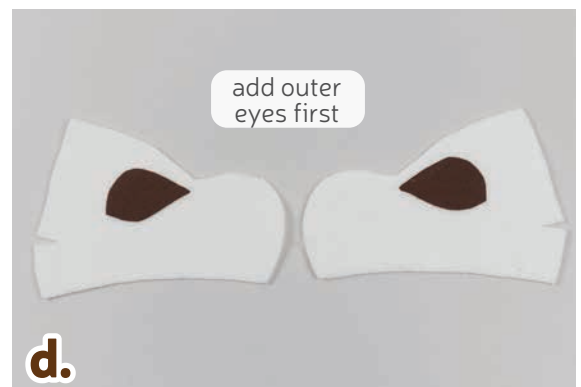
PART 1: THE APPLIQUE

Use the new applique templates found on page 16 to replace the **eyes** from the original **Long Neck Cuddle Plush Pattern**.

1. PREP THE EYE APPLIQUE



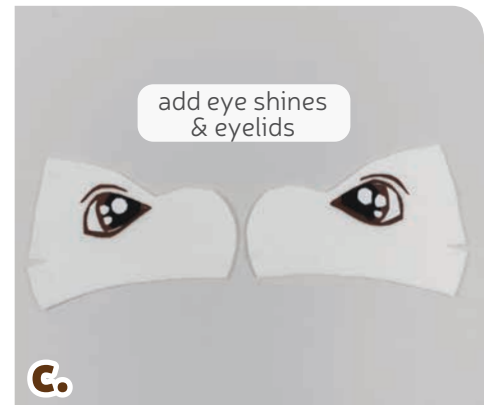
- Grab your fusible web and applique templates. Trace the pieces for the eyes. You should have:
 - **outer eyes** (2, dark brown)
 - **eye whites** (2, white)
 - **irises** (2, brown)
 - **pupils** (2, black)
 - **upper lids** (2, dark brown)
 - **eye shines** (6, white)
 - **mouth lines** (2, light brown)
 - **muzzle** (1, light brown)
 - **nostrils** (2, dark brown)
- Fuse the bumpy (adhesive) side of the fusible web onto the applique fabrics.
- Cut out your applique pieces and grab your **HEAD SIDE** piece (F1). Grab the **outer eye** applique piece. Set your paper pattern on top of the head side piece. Align the applique piece on top where the placement markings are. Next, carefully pull the paper pattern away while holding the applique piece in place.
- Fuse the applique pieces with your iron. Use a press cloth, such as a scrap piece of cotton. This will help protect any polyester or fuzzy fabrics from melting or scorching.



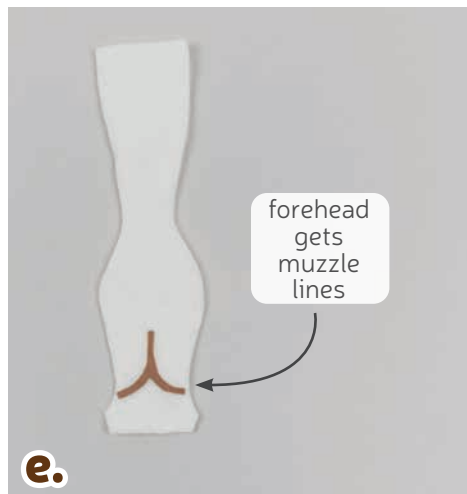
sew desu ne?

| WWW.CHOLYKNIGHT.COM |

2. FUSE THE REST OF THE FACE



- a.** Continue adding other layers on top of the outer eye pieces. Up next are the **eye whites**. Arrange them using the photo and pattern pieces as a guide.
- b.** Place and fuse the **irises** next.
- c.** Start adding the smaller pieces, including the **pupils**, **eye shines**, and **eyelids**.



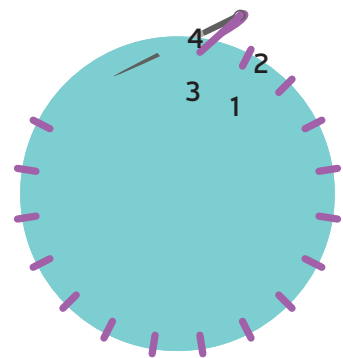
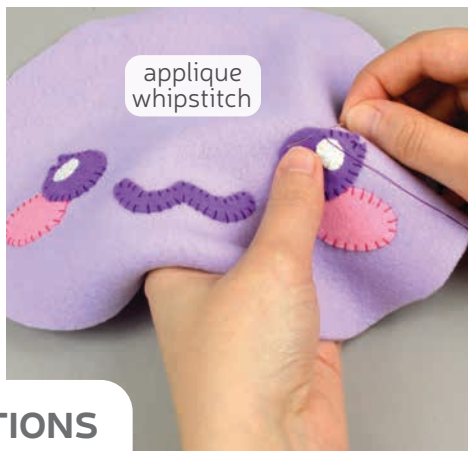
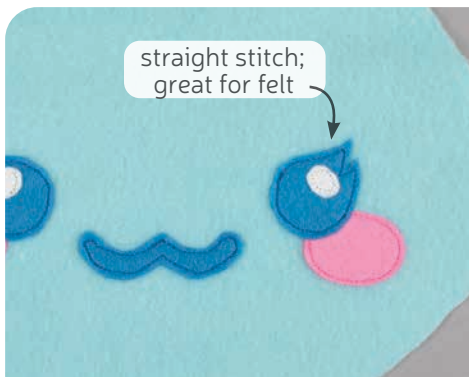
- d.** Lastly add the thin **mouth** pieces.
- e.** The **FOREHEAD** (F9) will also need a **muzzle** piece. This will join to the mouth pieces on the side.
- f.** The **NOSE** piece (F12) will need two **nostrils** as well.

This should complete all the applique. If you used heavy duty fusible web, you can keep the pieces fused without sewing, or you can sew them in place a number of ways. I've used a zigzag stitch here.

→ Refer to the next step for some other applique options.

sew desu ne?

| WWW.CHOLYKNIGHT.COM |



3. OTHER APPLIQUE OPTIONS

- Other good options for applique include a straight stitch, which involves sewing around the edge of the applique pieces with a straight stitch using matching thread -- about 1/8" in from the edge.
- You can also applique by hand; I prefer a whipstitch. Thread a hand-sewing needle with some matching thread and knot it. Bring the thread up from the back of the project; about 1/8" in from the edge of the applique shape. Bring it down perpendicular from the curve, just outside of the applique shape. This completes one stitch.
- For the next stitch, bring the needle back up about 1/8" away from the previous stitch and 1/8" in from the edge just as in the first stitch. Once again, bring it down just outside the applique shape. Continue this way until you've sewn around the shape.

PART 2: THE HEAD

Use the new head templates to replace the **head** from the original **LONG NECK CUDDLE PLUSH PATTERN**.

4. SEW THE HEAD DARTS

- Grab your **HEAD SIDE** pieces (F1). These pieces have some **darts** along the side. They're the small wedge shapes marked on the paper pattern. To sew them, start by folding the fabric along the point of the **dart** so right sides are facing. Match up the slanted lines and pin the fabrics together.

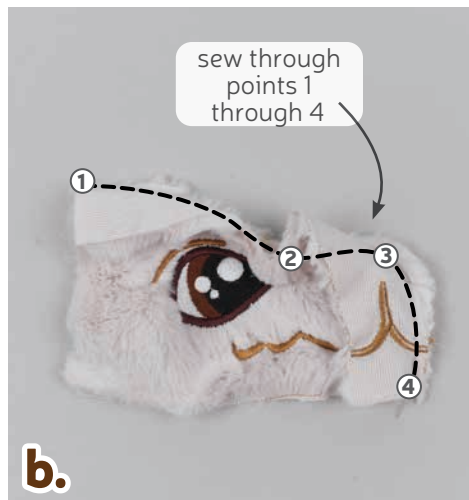
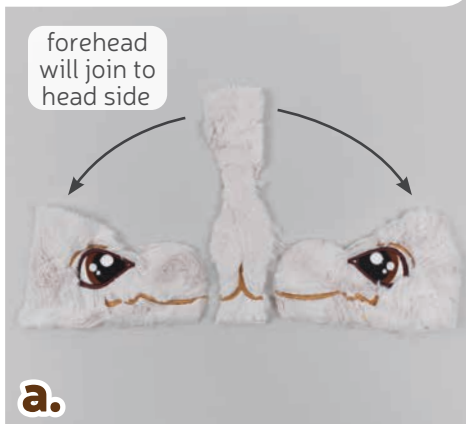


- Sew from the opening of the **dart** into the fold of the fabric. Try to blend your stitching into the fold for a smooth transition and a rounder finish to the plush. Repeat this with your other head side piece for two **darts** total.

sew desu ne?

| WWW.CHOLYKNIGHT.COM |

5. SEW THE FOREHEAD



- a.** Grab your **HEAD SIDE** (F1) and **FOREHEAD** pieces (F9). Refer to the original **LONG NECK CUDDLE PLUSH SEWING PATTERN** instructions for attaching the forehead to the head sides. Follow steps 8 through 10. Falkor's head looks most similar to the **WESTERN DRAGON** head due to his rounded snout.
- b.** Line up the forehead to the head side and match up **points 1, 2, 3, and 4**. Try to line up the lines from the **muzzle** with the **mouth lines** as close as you can. Sew through **points 1, 2, 3, and 4**.
- c.** Open up the forehead and head side pieces to make sure your **mouth lines** are lined up.
- d.** Repeat this on the other side with your other head side piece. Line up the forehead with the head side, matching up **points 1, 2, 3, and 4** so right sides are facing.
- e.** Sew through **points 1, 2, 3, and 4** to complete attaching the forehead.



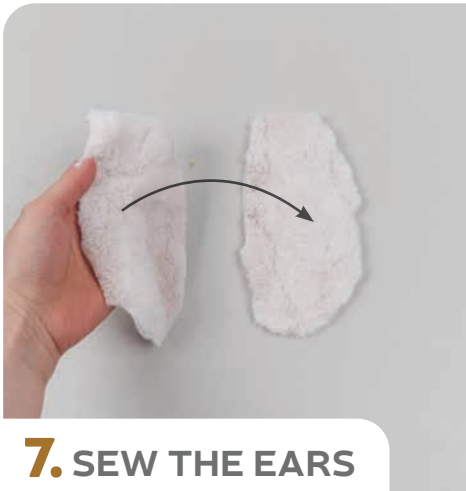
sew desu ne?

| WWW.CHOLYKNIGHT.COM |



6. SEW THE HEAD BOTTOM

- Grab your head front so far as well as your **HEAD BOTTOM** piece (F10). Refer to the original **LONG NECK CUDDLE PLUSH SEWING PATTERN** instructions for attaching the head bottom to the head front. Follow steps 11 and 12.
- Line up the head bottom around the lower edge of the head so **points 6 and 7** match up. Make sure right sides are facing and pin the fabrics together. Attach the head bottom by starting at **point 6** at the center and sewing down to **point 7**, then repeat on the other side.
- Trim the excess seam allowance around any curves near the nose. This will increase flexibility in those areas and allow the head to turn more cleanly.



7. SEW THE EARS

- Grab your **EAR** pieces (F11). Take two matching ones and align them with right sides facing and the raw edges matching up.
- Sew the pieces together along the long curved edge. Leave the short straight edge open for turning the piece right side out.
- Turn the ear right side out, then repeat once more with your other ear pieces so you have two total.

sew desu ne?

| WWW.CHOLYKNIGHT.COM |



8. BASTE THE EARS

- If you haven't already, note the **ear placement lines** found on the paper pattern for the **HEAD SIDE** (F1). Transfer these lines onto the right side of the fabric along the edge. Align the ears within these **placement lines** so the raw edges match up.
- Now flip the ears inward so they're facing the head. The raw edges should now be flush with the head. Pin the fabrics together. Baste the ears to the head within the seam allowance to hold them in place for future steps.
- Now refer back to the original **LONG NECK CUDDLE PLUSH PATTERN**. Follow step 16 to both sew and attach the **HEAD BACK** pieces (F2). Flip your head right side out to complete.

PART 3: FINISHING UP

Use the original **EASTERN DRAGON** body templates from the **LONG NECK CUDDLE PLUSH PATTERN**. For Falkor we're leaving off the **CLAWS** (B14) and **TAIL SPIKES** (B12) but keeping the **BODY SPIKES** (B7).

9. SEW THE BODY

- Refer back to the original **LONG NECK CUDDLE PLUSH SEWING PATTERN** for assembling the body. Follow the instructions for the **EASTERN DRAGON**.

That should include:

- **Step 18** for the body back arms
- **Steps 24-26** for the inner arms and legs
- **Steps 29-39** for attaching the body to the belly, adding the back spikes, and sewing the back
- **Steps 42-45** for attaching the foot bottoms, flipping, and stuffing



sew desu ne?

| WWW.CHOLYKNIGHT.COM |



10. SEW THE NOSE

- Grab your **NOSE** pieces (F12). Take one that's been appliqued with your **nostrils** and align it with the blank one so right sides are facing and the raw edges match up. Sew the nose pieces together all the way around the shape.
- To turn the piece, cut a short slit into the back fabric only. This is the side without the applique. You'll want to cut it right in the center, but there's also a **cutting guide** on the paper pattern if you need more help.
- Turn the nose right side out through the opening you've cut, then stuff it lightly with stuffing.

11. ATTACH THE NOSE

Refer back to the original **LONG NECK CUDDLE PLUSH SEWING PATTERN** for stuffing and attaching the head. Follow steps 46 through 48.

- Grab your stuffed nose and align it over the nose of your plush. It should cover the top edge of your **muzzle lines** so the tips of the nostrils are pointing down. The cut side should be facing the plush as well.
- Secure the nose in place by ladder stitching it around the seam from step 10.

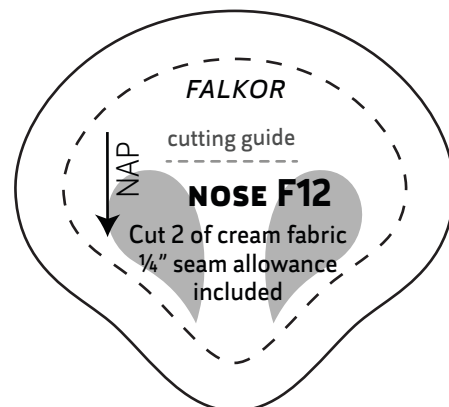
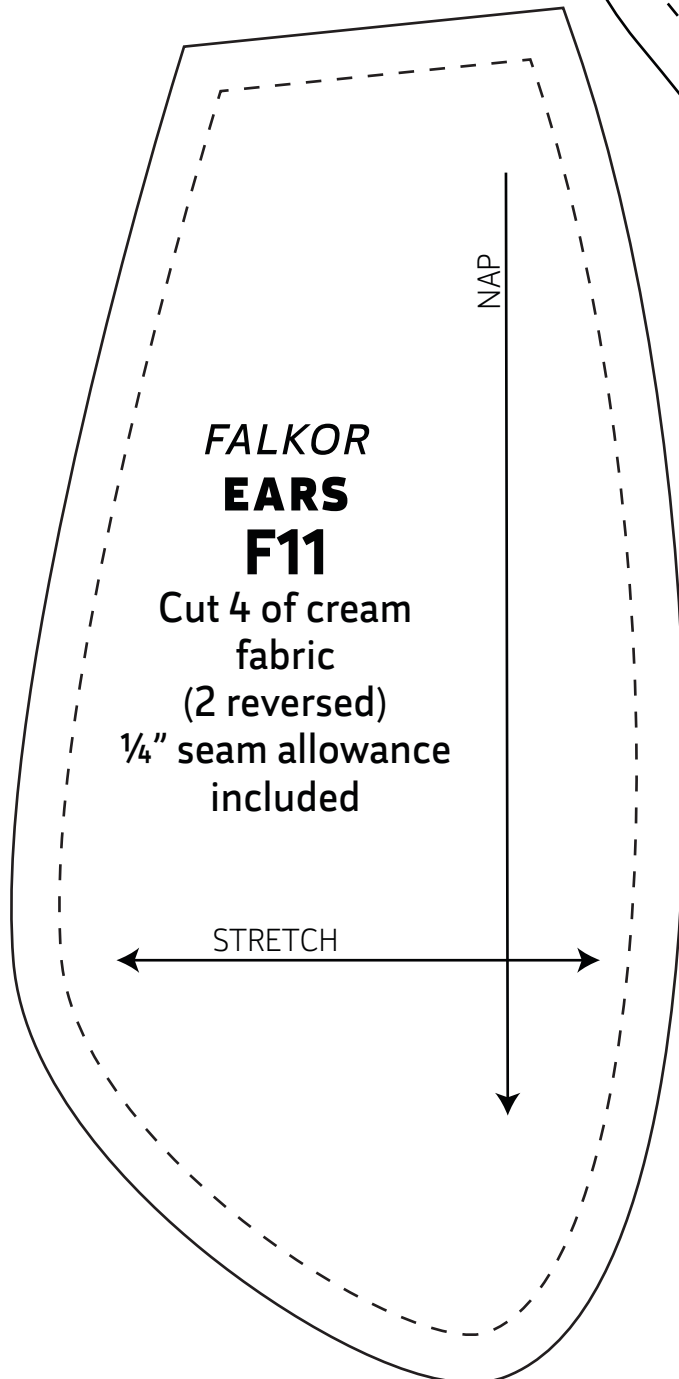
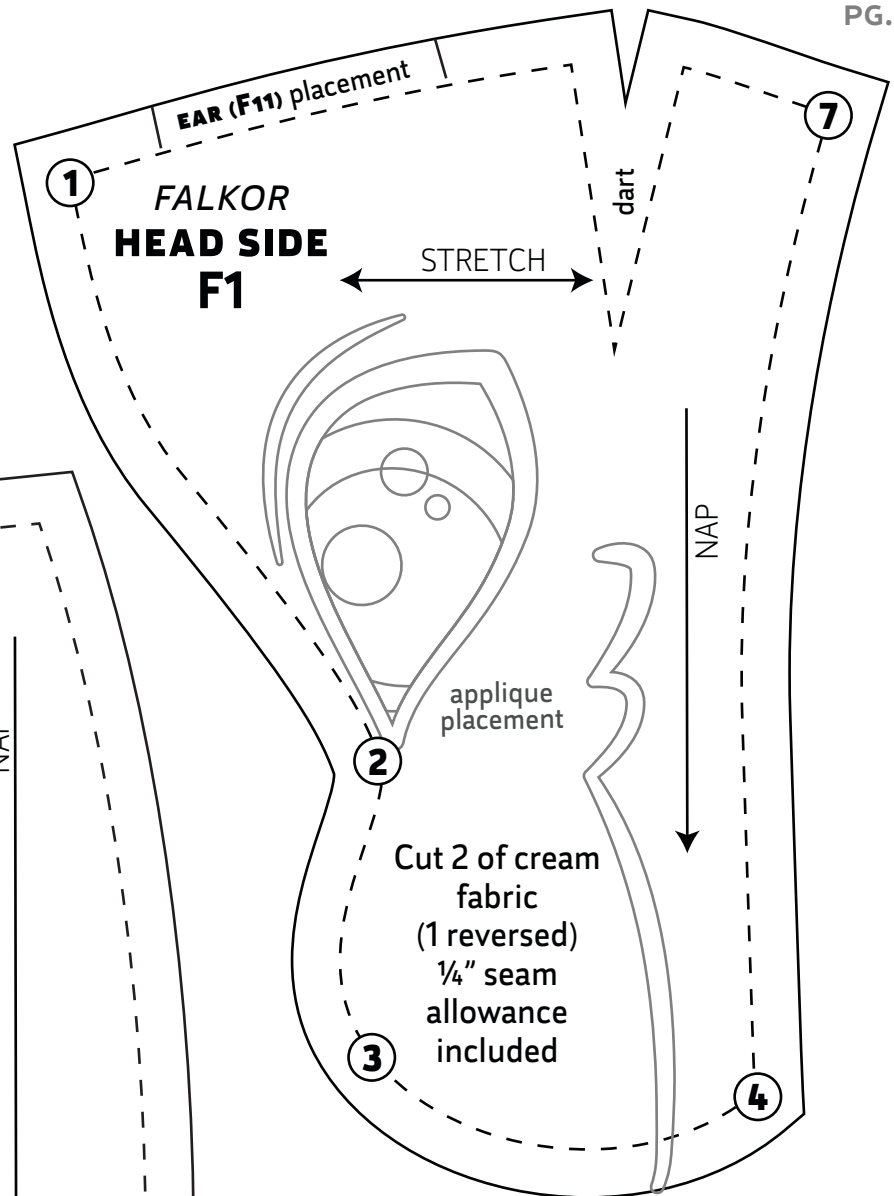


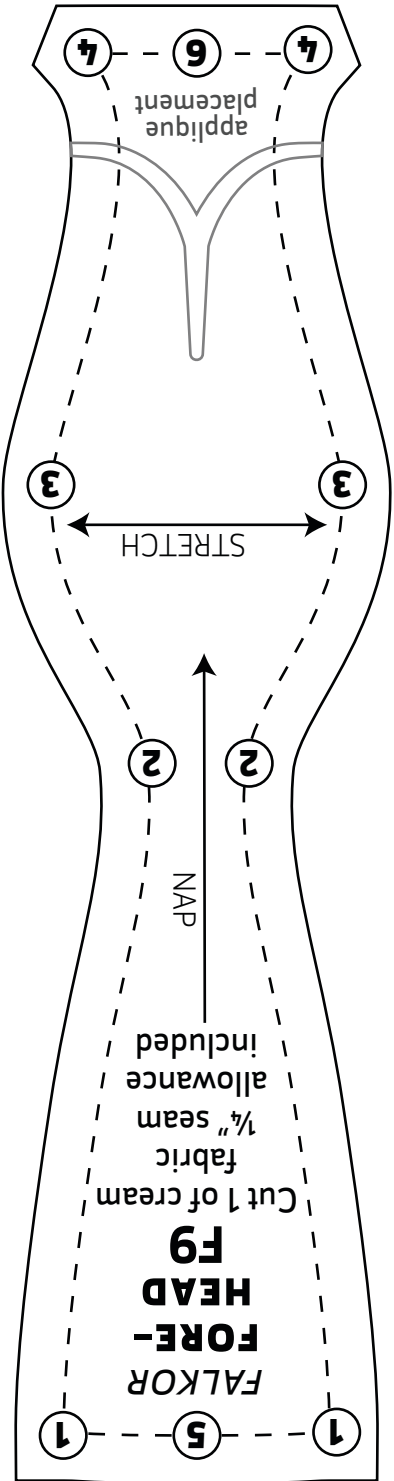
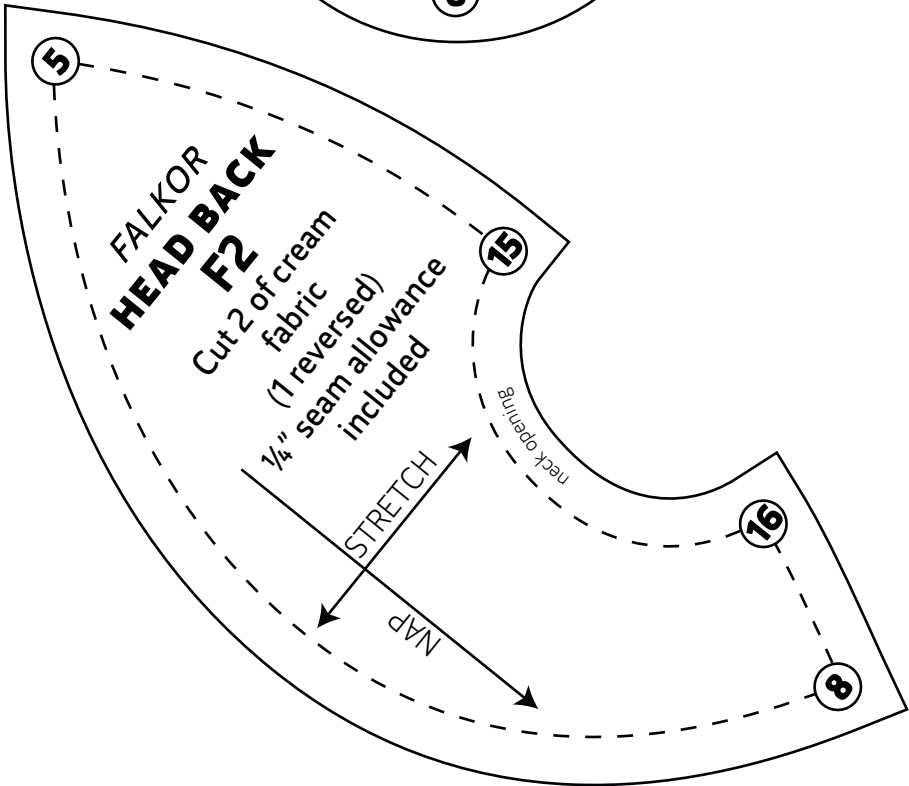
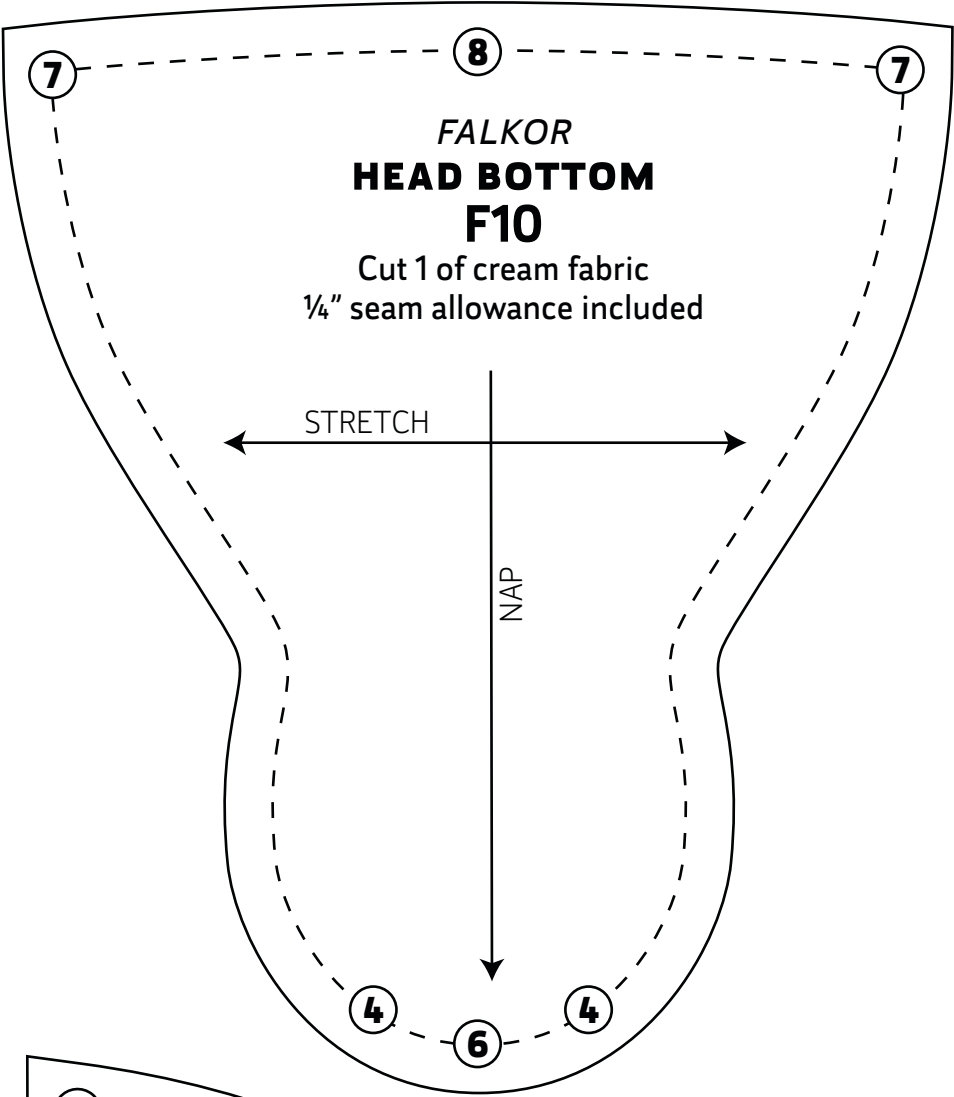
sew desu ne?

| WWW.CHOLYKNIGHT.COM |

TEST SQUARE 2"

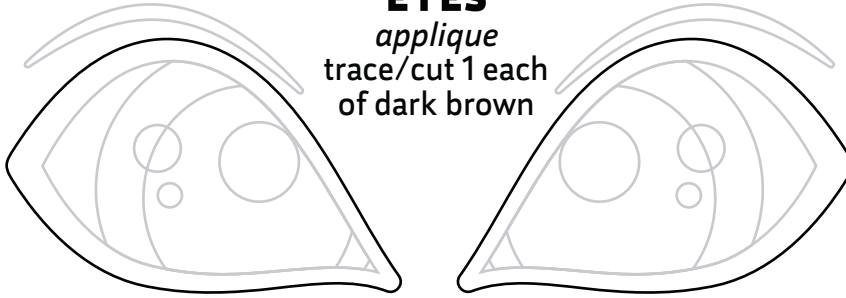
measure this square to
be sure you've printed at
the proper proportions





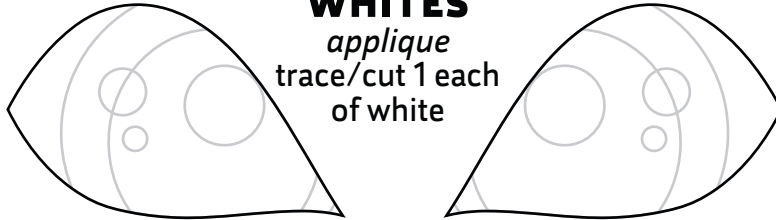
OUTER EYES

applique
trace/cut 1 each
of dark brown



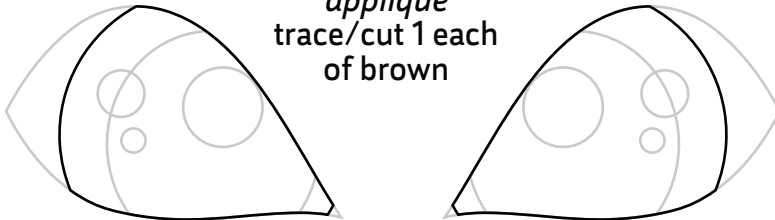
EYE WHITES

applique
trace/cut 1 each
of white



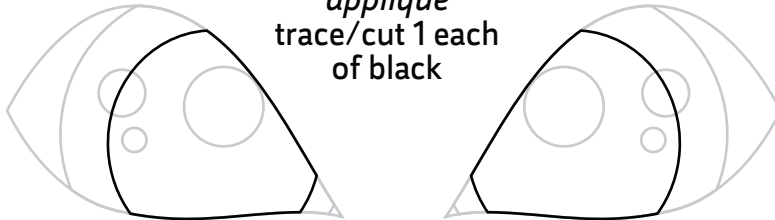
IRISES

applique
trace/cut 1 each
of brown



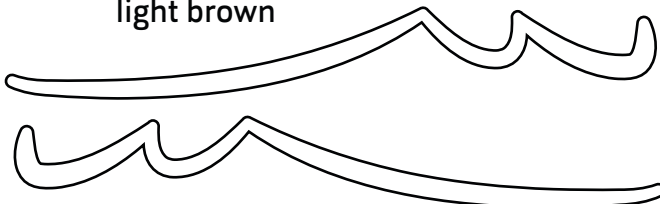
PUPILS

applique
trace/cut 1 each
of black



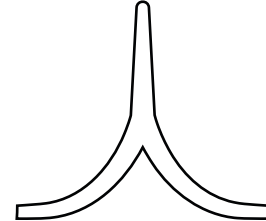
MOUTH

applique
trace/cut 1 each of
light brown



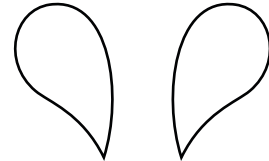
MUZZLE

applique
trace/cut 1 of
light brown



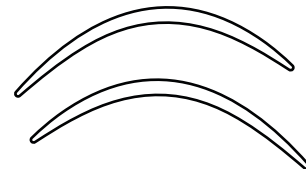
NOSTRILS

applique
trace/cut 1 each of
dark brown or black



UPPER LID

applique
trace/cut 1 each of
dark brown or black



EYE SHINES

applique
trace/cut 2 each of
white

