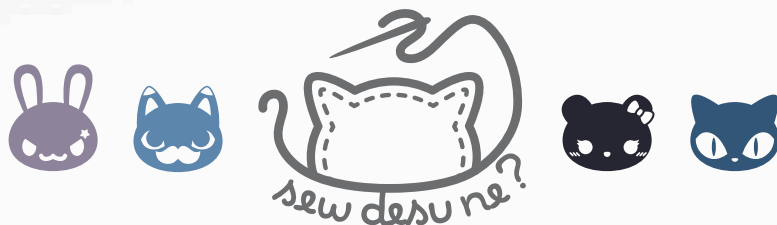


# GARGOYLE PLUSH



a free sewing pattern by



# GARGOYLE PLUSH

These grotesque creatures originally started out as ornamental water spouts on cathedrals. But now gargoyles are commonly known as the perched monsters that loyally keep watch over buildings. This plush version has the same perched sitting pose with clawed hands and feet. It also features a unique monstrous face with long ears and horns. And to really give it a foreboding silhouette, it has tall cape-like wings that completely surround it.

## DIFFICULTY:



The most difficult part of this plush is likely the tight curves in the body. Another challenge is all of the hand sewing required to attach the head, arms, feet, horns, and wings. So give yourself plenty of time for that.

## SKILLS USED:

- Fusible web applique
- Curved sewing
- Ladder stitch
- Sewing small pieces
- Matching notches and points
- Darts
- Gathering; gathering stitch
- Using pipe cleaners

## MAKES:

About 6" tall from bottom of feet to top of head, 5" wide from each side of body, and 5" long from front of face to back of body. Wingspan is about 11" wide.



## MATERIALS & TOOLS:

- 1/3 yd. of fabric for main body
- 1/8 yd. of accent fabric for horns and wing spurs
- 1/8 yd. (or 7"x 4") of accent fabric for inner ears
- 4" x 4" of black applique fabric for outer eyes, mouth, eyebrows, and nose
- 3" x 3" of white applique fabric for eyes and teeth
- 6" x 7" of accent applique fabric for inner wings
- 8" x 8" of light or heavy duty fusible web
- optional 6" x 6" of accent applique fabric for body and arm cracks (plus 6" x 6" of light or heavy duty fusible web)
- sewing thread to match main fabric and applique fabrics
- poly-fil stuffing
- basic sewing tools (sewing machine, scissors, iron, needles, pins, fabric marker, seam ripper)

## FUSIBLE WEB:

- Fusible web adhesive is a sheet of adhesive with a paper backing.  
**Not to be confused with fusible interfacing**, which is adhesive attached to a fabric/fiber backing.
- Some common brands are **Pellon** & **HeatnBond**
- In countries outside the US, it may also be known as **bondaweb**
- It comes in **light** and **heavy duty** varieties. Lightweight strength is meant for applique you intend to sew later. Heavy duty versions are for a no-sew bond. If you try to sew them later your machine might have trouble penetrating the glue.



## APPLIQUE FABRICS:

- Good applique fabrics include **flannel**, **cotton**, **felt**, **minky**, and **fleece**.
- Flannel and cotton are best for detailed applique with a lot of layers because they're thinner. Meanwhile felt, minky, and fleece are better for simpler applique like body markings.
- **Flannel** is used in the example instructions (page 7).



sew desu ne?

| WWW.CHOLYKNIGHT.COM |



## fabric comparison:



## SUGGESTED FABRICS:

## MINKY OR FLEECE

Medium weight, plush fabrics with about 20%-30% stretch along the crosswise grain work best for this project. The varieties shown to the left are some good options and names to look for. Try to avoid heavyweight versions of fleece that are intended for outdoor apparel or they may cause trouble for the detailed areas.

You can also use non-stretch fabrics (such as felt), but be aware that the curves will be more difficult to sew and the result will look different. The plush will become more elongated and the edges will look sharper.

10" of minky  
stretches to 13"  
= 30% stretch



MINKY

VS.

FELT



sew desu ne?

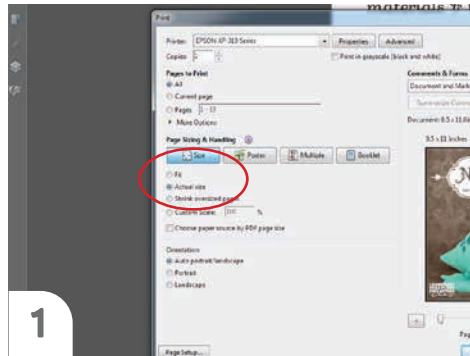
| [WWW.CHOLYKNIGHT.COM](http://WWW.CHOLYKNIGHT.COM) |

## PRINTING THE PATTERN:

Set your computer to print **PAGES 27-31**.

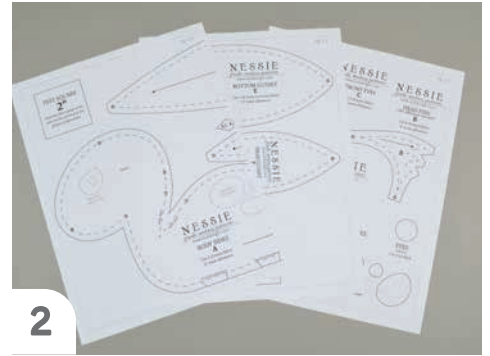
If you're unfamiliar with printing and assembling a .pdf pattern, read the steps to follow.

For the best results, use a .pdf reader like **ADOBE READER**. That's what is shown here and will give you the most control over the settings.



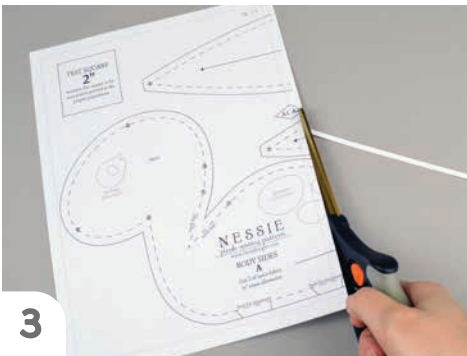
1

At the print dialog box, check the box that says print at "Actual Size" or 100%. Any other selection (such as "Fit to page") will distort the pattern so it's slightly larger or smaller and we don't want that.



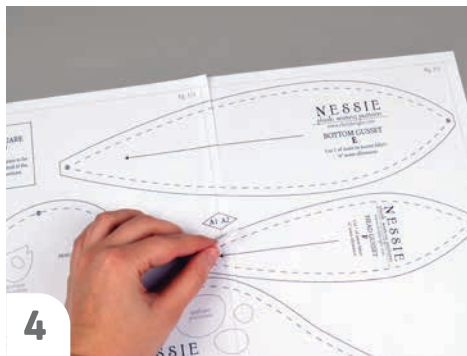
2

Print the pages needed for the file. You might have one or more. Either way, be sure you have the full collection by noting the page numbers in the corner.



3

It's likely your printer will have a margin that ensures your image doesn't print to the very edge. Assembly will be easier if you trim off this blank margin edge. This will give you pages that overlap slightly during assembly. If you trim across the gray outline boxes, this will give you pages that don't overlap but rather butt against each other.



4

To line up the pattern pages, match up the corresponding diamond shapes. Each diamond will have a letter, so it's simply a matter of matching A1 to A2, B3 to B4 and so on. The faint gray lines indicate the border of every page, you should be able to line those up as well. When the diamond goes together, tape it in place.

If you have many pages, it's easier to tape up the pages into rows first. Then tape the rows together into a full block.



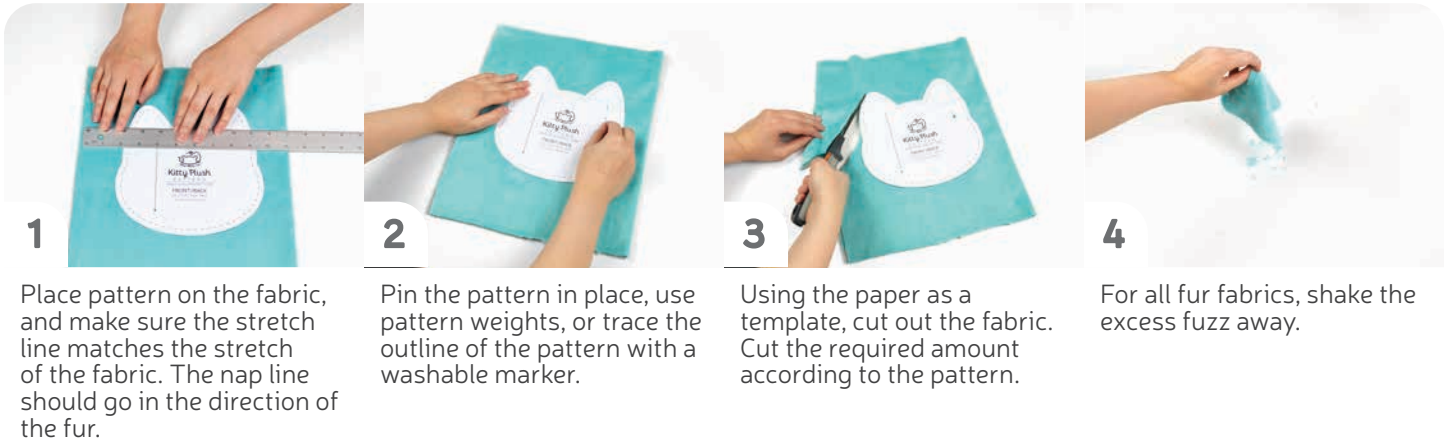
5

You can trace the patterns onto a different paper, or you can also just cut them straight from the printer paper -- be sure that each piece is fully taped together along the joins so they don't fall apart when you cut them.

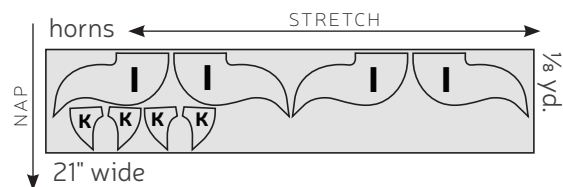
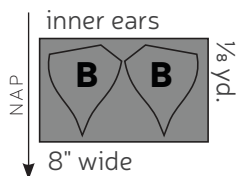
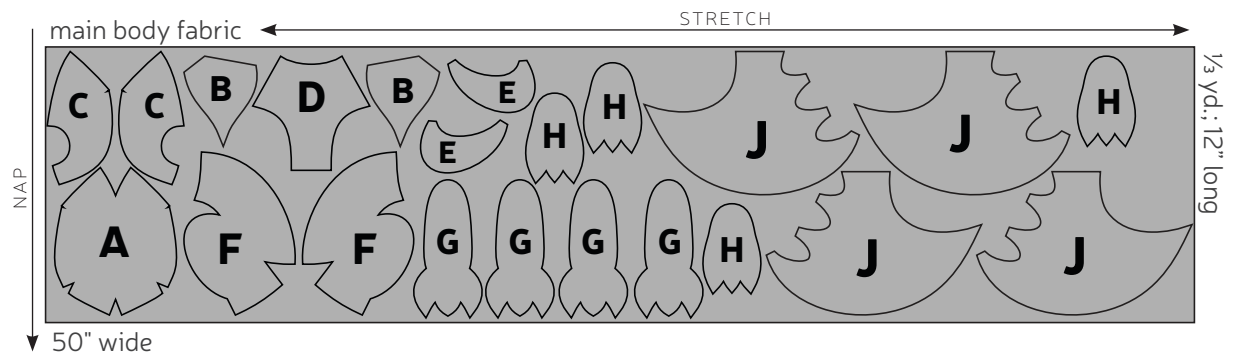
**sew desu ne?**

| [WWW.CHOLYKNIGHT.COM](http://WWW.CHOLYKNIGHT.COM) |

## CUTTING THE FABRIC:



## CUTTING LAYOUT:



**sew desu ne?**

| [WWW.CHOLYKNIGHT.COM](http://WWW.CHOLYKNIGHT.COM) |

## BEFORE YOU BEGIN:

- Briefly read the project instructions so you know what to expect.
- If desired, mark the cut fabric pieces with the markings and symbols from the pattern. Or wait until the applicable step before transferring.
- Note that a ¼" seam allowance is used throughout the project, which is included in the pattern templates.

### 1. FUSE THE EYE APPLIQUE



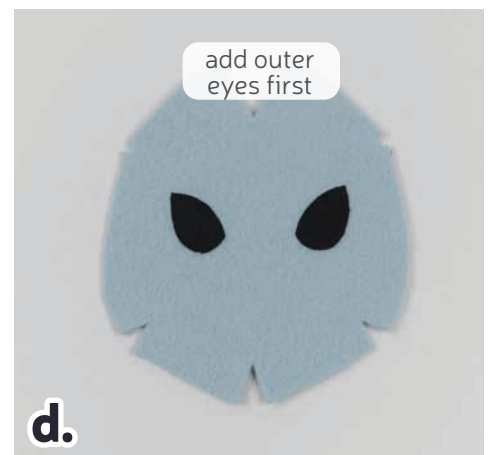
**a.** Grab your fusible web and applique templates. Trace the pieces for the eyes of your gargoyle. You should have:

- |                                |                          |                              |
|--------------------------------|--------------------------|------------------------------|
| • <b>outer eyes</b> (2, black) | • <b>eyes</b> (2, white) | • <b>eyebrows</b> (2, black) |
| • <b>nose lines</b> (2, black) | • <b>nose</b> (1, black) | • <b>mouth</b> (1, black)    |
|                                |                          | • <b>teeth</b> (2, white)    |

**b.** Fuse the bumpy (adhesive) side of the fusible web onto the applique fabrics.

**c.** Cut out your applique pieces and grab your **HEAD FRONT** piece (A). Grab the **outer eye** applique piece. Set your paper pattern on top of the head front piece. Align the applique piece on top where the placement markings are. Next, carefully pull the paper pattern away while holding the applique piece in place.

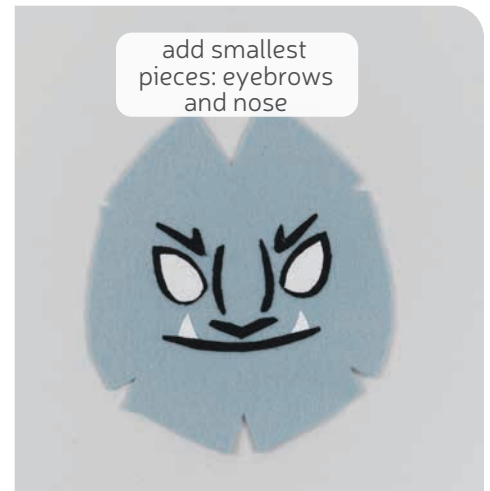
**d.** Fuse the applique pieces with your iron. Use a press cloth, such as a scrap piece of cotton. This will help protect any polyester or fuzzy fabrics from melting or scorching.



sew desu ne?

| [WWW.CHOLYKNIGHT.COM](http://WWW.CHOLYKNIGHT.COM) |





## 2. SEW THE EYE APPLIQUE

- Add the **eye** pieces next. Use the paper pattern and photos as a placement guide.
- Next align the **mouth**. Tuck the **teeth** underneath the mouth, then fuse all the pieces in place.
- Lastly add the smallest pieces, the **nose**, **nose lines**, and **eyebrows**.



## 3. APPLIQUE THE BODY MARKINGS

→ *Also take this time to applique your body pieces if you want to.*

- The **BODY BACK** (F) will get **cracks** if you want them. Add one set of cracks to each body piece.
- The **ARMS** (G) also get **cracks**. Applique them to two of the arms and leave the other two blank.
- The **WINGS** (J) will get also get **inner wing markings**. Fuse the applique to two of the wings and leave the other two blank.

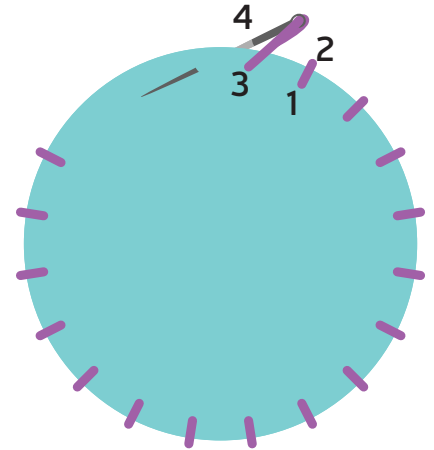
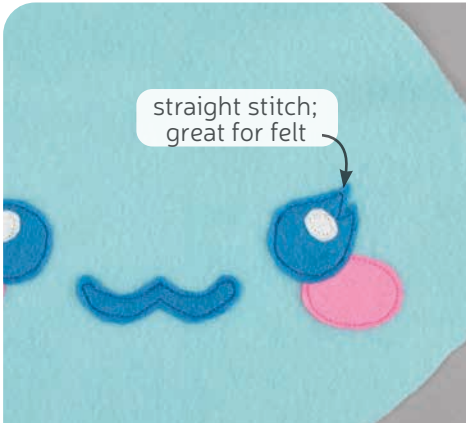
If you used heavy duty fusible web, you can keep the pieces fused without sewing, or you can sew them in place a number of ways. I've used a zigzag stitch here.

→ *Refer to the next step for some other applique options.*

sew desu ne?

| WWW.CHOLYKNIGHT.COM |





## 4. OTHER APPLIQUE OPTIONS

- Other good options for applique include a straight stitch, which involves sewing around the edge of the applique pieces with a straight stitch using matching thread -- about 1/8" in from the edge.
- You can also applique by hand; I prefer a whipstitch. Thread a hand-sewing needle with some matching thread and knot it. Bring the thread up from the back of the project; about 1/8" in from the edge of the applique shape. Bring it down perpendicular from the curve, just outside of the applique shape. This completes one stitch.
- For the next stitch, bring the needle back up about 1/8" away from the previous stitch and 1/8" in from the edge just as in the first stitch. Once again, bring it down just outside the applique shape. Continue this way until you've sewn around the shape.



## 5. SEW THE HEAD FRONT DARTS

- The **HEAD FRONT** piece (A) has several **darts** all around the outside edge. These are the small wedge shapes marked on the paper pattern. To sew them, we're going to start by folding the fabric along the point of one of the **darts** so the slanted edges match up. Make sure right sides are facing and pin the fabrics together.
- Sew from the opening of the **dart** into the fold of the fabric. Try to blend your stitching into the fold for a smooth transition and a rounder finish to the plush.
- Repeat this with all six **darts** around the head. There are three along the top and three along the bottom.

### DARTS:

A wedge-shaped gap found in a pattern. When sewn in fabric, it creates a tuck in the fabric and develops a 3D shape. The diagonal sides of the wedge are the **LEGS**; these are matched up and sewn to the **POINT** of the dart.

sew desu ne?

| WWW.CHOLYKNIGHT.COM |

## 6. SEW & FOLD THE EARS



- a.** Grab your **EAR** pieces (B). Take one from your main fabric and one from your inner ear fabric. Align them with right sides facing and the raw edges matching up.
- b.** Sew the pieces together along the long curved edges. Leave the straight edges free for turning the piece right side out later.
- c.** Trim the excess seam allowance at the tip of the ear to reduce bulk when it's turned right side out later.



- d.** Turn the ear right side out through the opening, then repeat this step with your remaining ear pieces for two total.
- e.** Fold the ears with the inner ear fabrics facing. Use the **fold line** found on the paper pattern as a guide for where to fold them. The bottom open edges of the ears should be flush.
- f.** Sew a basting stitch along the bottom edge of the ears to hold the fold in place. Sew within the seam allowance so your stitches won't show on the finished plush. Repeat this with the other ear, but fold it in the other direction so you have a mirrored pair as shown.

### BASTING:

A form of temporary sewing meant to hold pieces in place. A long stitch length is often used for this reason. The finished result is not meant to be seen and sometimes is even removed later (depending on your project).

sew desu ne?

| [WWW.CHOLYKNIGHT.COM](http://WWW.CHOLYKNIGHT.COM) |

## 7. BASTE THE EARS

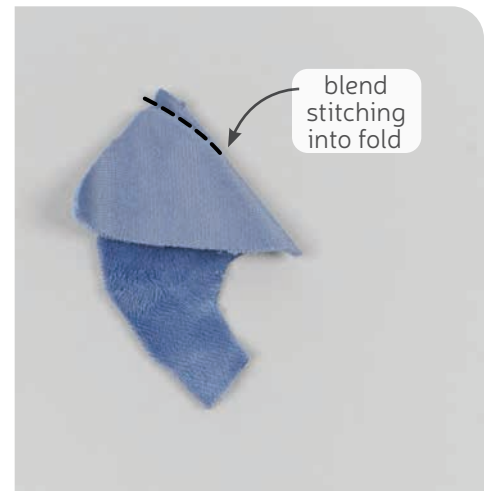
- a.** Grab your **HEAD FRONT (A)** so far. If you haven't already, note the **ear placement lines** found on the paper pattern for the head front. Take your ears and align them within these **placement lines** so the raw edges match up. The inner ear fabrics should be facing up and the folds should be pointing upward.



- b.** Now take your ears and flip them inward so the inner ear fabric is facing down. The raw edges should be flush against the outer edge of the head. Baste the ears within the seam allowance to hold them in place for future steps.

## 8. SEW THE HEAD BACK DARTS

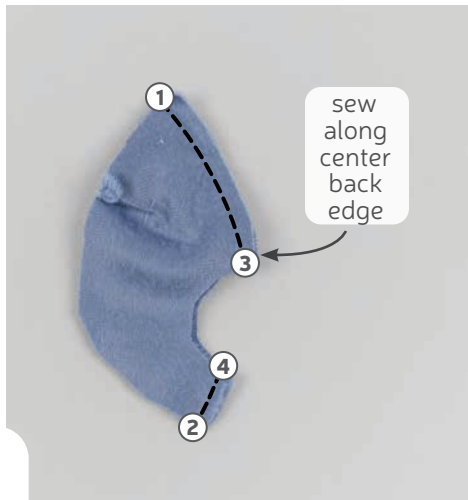
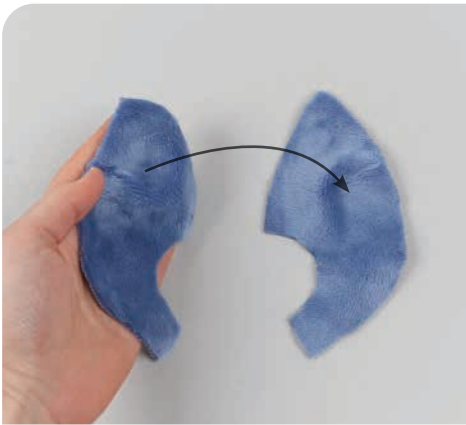
- a.** The **HEAD BACK (C)** also has some **darts** in the similar to the head front from before. We're going to sew them the same way starting by folding the fabric along the point of the **dart** so the slanted edges match up.
- b.** Sew from the opening of the **dart** into the fold of the fabric. Try to blend your stitching into the fold for a smooth transition and a rounder finish. Repeat this with both head back pieces for two **darts** total.



sew desu ne?

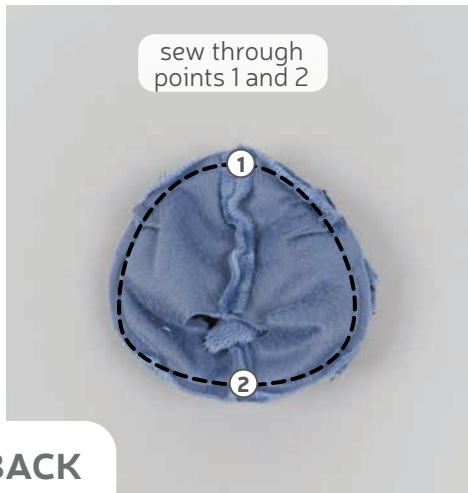
| [WWW.CHOLYKNIGHT.COM](http://WWW.CHOLYKNIGHT.COM) |





## 9. SEW THE HEAD BACK

- Grab both of your **HEAD BACK** pieces (C). Align them with right sides facing and the raw edges matching up.
- Sew the pieces together along the center back edge. This is the edge above and below the **neck opening** that's marked on the paper pattern. You'll go from **point 1 to 3**, then from **point 4 to 2**.
- Open up the head back pieces when complete.



## 10. ATTACH THE HEAD BACK

- Grab your **HEAD FRONT** from before (A). Align the **HEAD BACK** (C) over it so right sides are facing and the raw edges match up. You can use the seams at the top and bottom to ensure the pieces are aligned. The back will match to the front at **point 1** at the top and **point 2** at the bottom. Make sure the ears are tucked inside and pin the fabrics together.
- Sew the head back to the front all the way around the shape.
- Turn the head right side out through the opening in the back. Set aside the head for a moment while we work on the body.

sew desu ne?

| [WWW.CHOLYKNIGHT.COM](http://WWW.CHOLYKNIGHT.COM) |



## 11. ATTACH THE INNER LEGS

- Grab your **BELLY** (D) and **INNER LEG** pieces (E). These pieces will be joined together at the inner curves, but you can also look out for the **numbered points** for help with alignment. Find **points 5 and 6**.
- Align the inner legs with the belly so right sides are facing and **points 5 and 6** match up. Pin the fabrics together.
- Sew the inner legs to the belly from **point 5 to 6**.

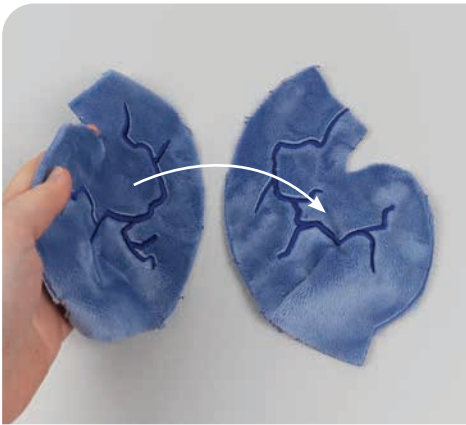
## 12. SEW THE BODY BACK DART

- The **BODY BACK** pieces (F) also have a dart similar to previous pieces. Sew this **dart** similar to the previous ones, starting by folding the fabric along the point of the **dart** so the slanted edges match up.
- Sew from the opening of the **dart** into the fold of the fabric for a smooth transition and a rounder finish to the plush. Repeat this with your other body back piece for two total.



sew desu ne?

| [WWW.CHOLYKNIGHT.COM](http://WWW.CHOLYKNIGHT.COM) |



### 13. SEW THE CENTER BODY BACK

- Grab your two **BODY BACK** pieces (F) and align them with right sides facing and the raw edges matching up.
- Sew the pieces together along the center back seam. This is the edge with the body back **dart** sewn in the previous step. It will also go from **point 3** at the neck down to the **filled circle marking** at the bottom corner.
- Open up the pieces when complete.

### 14. ALIGN THE BELLY AND BODY

- Grab your **BELLY** and **INNER LEGS** as well as your body so far. We're going to join these pieces down the sides and around the legs. Experts should be able to handle this all in one go, but we're going to break it down into several parts for beginners.
- First ensure that you've clipped your fabric at **point 5**. This is a line marked on the **BODY BACK** paper pattern (F). This will ensure that the corner of the leg can open up wide as we attach other pieces.



sew desu ne?

| [WWW.CHOLYKNIGHT.COM](http://WWW.CHOLYKNIGHT.COM) |



## 15. SEW THE BELLY AND BODY SIDE

- Grab your **BODY** and **BELLY** pieces. Line up the side edge. This is the edge going from the top corner down to the leg at **point 5**. Make sure right sides are facing and pin the fabrics together.
- Sew the body side, starting at the top corner and going down to **point 5**.



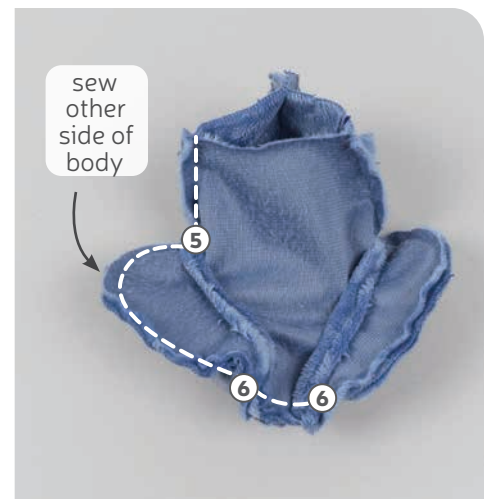
## 16. SEW THE LEG

- Next pin the **INNER LEG** (E) to the outer curve of the **BODY BACK** (F). It starts at **point 5** and goes around to **point 6**. Make sure right sides are facing and pin the fabrics together.
- Sew around the leg, from **point 5 to point 6**.



## 17. SEW THE OTHER SIDE

- At the edge between the legs, the **center bottom** marking on the **BELLY** (D) will match up with the **back seam** (from step 13).
- Pin and sew between the legs, from one **point 6** to the other. Finish up the other side by sewing up the other leg and side. Sew from **point 6 to 5**, then up the side. This should take you all the way around the body.



sew desu ne?

| [WWW.CHOLYKNIGHT.COM](http://WWW.CHOLYKNIGHT.COM) |

## 18. CLIP & TURN THE BODY

- a. Before turning the body right side out, clip the seam allowances at the corners. This will help it turn more cleanly. This is particularly important at **points 5 and 6**.
- b. Turn the body right side out through the opening in the neck.



## 19. STUFF THE BODY & HEAD

- a. Start stuffing the body. It helps to begin by stuffing the body with stuffing about halfway. While the body is halfway stuffed, start filling up the legs by sneaking stuffing into them around the side. It will help hold the stuffing in the legs if there is already stuffing in the body.
- b. Fill up the rest of the body, and sneak extra bits of stuffing into the legs if necessary. Keep filling the body until it's firm before moving onto the head.
- c. Start stuffing the head. Fill up the head through the opening in the back. Stuff it enough so there are no wrinkles in the fabric near the seams and darts. If you can't get it completely firm that's okay, we'll sneak more stuffing into the head and body later.

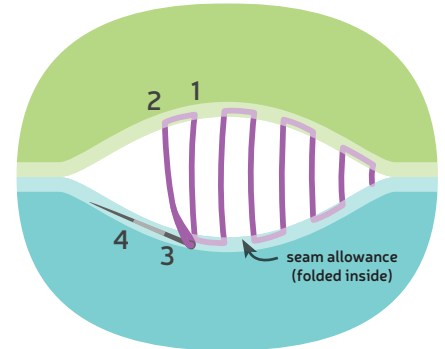
sew desu ne?

| [WWW.CHOLYKNIGHT.COM](http://WWW.CHOLYKNIGHT.COM) |



## 20. ALIGN THE BODY & HEAD

- Grab your stuffed head and align it onto the stuffed body, matching up the **neck openings**. You can use the **numbered points** to align the pieces if you need help. The top of the neck opening will align at **point 3** (at the back). The bottom of the neck opening will align at **point 4** (at the belly).
- Prepare to attach the two pieces. Grab a hand sewing needle and thread it. Attach the pieces with a ladder stitch. Start by taking your first stitch into **point 3** on the head and another into **point 3** on the body.
- Work your way around the head and body using big basting stitches first. Just focus on getting the pieces matched up rather than whether your stitches are neat and tidy.



## 21. SECURE THE BODY & HEAD

- Come back around to where you started, but when you have about an inch left, sneak a bit of extra stuffing into the neck. This will help ensure that the head isn't floppy.
- Check that you like the placement of the head with your basting stitches. If it isn't crooked or twisted, stitch around the neck again with tinier, neater stitches to secure the head in place.



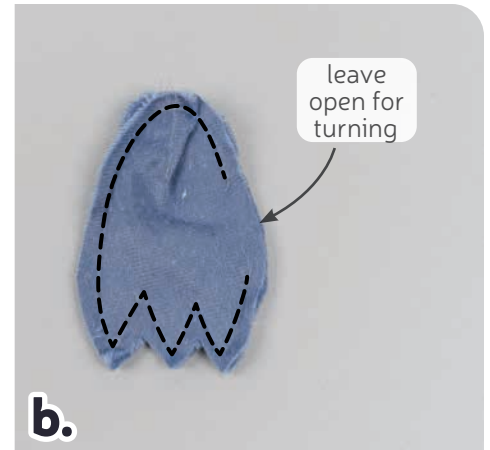
sew desu ne?

| [WWW.CHOLYKNIGHT.COM](http://WWW.CHOLYKNIGHT.COM) |



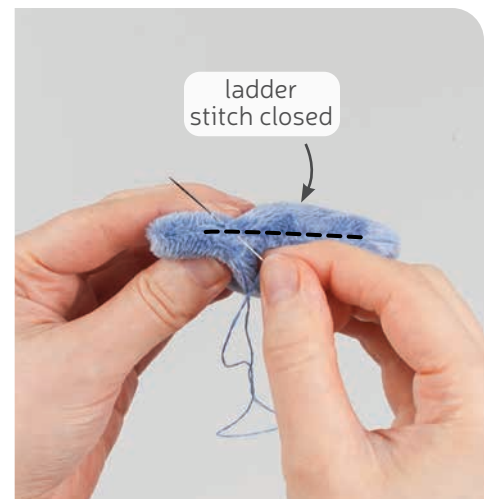
## 22. SEW THE FEET

- a. Grab your **FOOT** pieces (H). Take two and align them with right sides facing and the raw edges matching up.
- b. Sew the pieces around the outer edge, but leave a small **opening for turning** in the side (it's marked on the paper pattern as well).
- c. Trim the excess seam allowance around the claws. This will reduce bulk and increase flexibility when the piece is turned later.
- d. Turn the feet right side out through the opening you left. Repeat this step once more so you have two feet total.



## 23. CLOSE UP THE FEET

- a. Stuff the **FEET** lightly with stuffing through the opening you left. It works best if the heel area is kept very light (so it fits under the leg) and the toes are more firm (so they stay looking pointy).
- b. Tuck in the seam allowances in the feet and ladder stitch them closed.



sew desu ne?

| [WWW.CHOLYKNIGHT.COM](http://WWW.CHOLYKNIGHT.COM) |



## 24. ATTACH THE FEET



- To attach the feet, take one and align it beneath the leg of your plush. It should be centered onto the leg seam. To give it a crouching pose, have the heel right next to **point 6** on the inner leg seam. This will help prop up the plush so it can sit on its feet.
- Ladder stitch the foot to the leg where the pieces meet. For the heel area, the foot is stitched right next to the foot seam (from step 22).
- When you are close to the front of the feet, you'll need to flip the feet downward and stitch around the top of the foot. Repeat for both feet.



## 25. SEW THE ARMS



- Grab your **ARM** pieces (G). If you appliqued yours, take one blank one and one with applique and align them with right sides facing and the raw edges matching up.
- Sew the pieces around the outer edge. Then repeat this with your remaining arm pieces so you have two arms.
- Trim the excess seam allowance around the claws. This will reduce bulk and increase flexibility when the piece is turned later.

sew desu ne?

| [WWW.CHOLYKNIGHT.COM](http://WWW.CHOLYKNIGHT.COM) |



## 26. STUFF THE ARMS



- To turn the arms, cut a short slit through one layer of the fabric only near the top center of the arm. There's also a **cutting guide** on the paper pattern for extra help.
- Turn the arms right side out through the opening you've cut.
- Stuff the **ARMS** semi-firmly with stuffing through the opening you've cut. Make sure to get small bits in the tips of the claws so they stay looking firm and pointy.

## 27. SEW THE WRISTS

- To make little hands, we're going to bend the arms at the wrist and stitch them in place. If you haven't already, note the **stitching guides** found on the paper pattern for the **ARMS** (G). Use a ladder stitch to take a stitch into the top curve of the guide and another into the bottom curve. When you tighten the stitches, it should cause the claws to bend upward to create a little wrist.
- Continue stitching across the guide to the other side, and the claws should now bend upward at an angle. Repeat this for your other arm for two total.



sew desu ne?

| [WWW.CHOLYKNIGHT.COM](http://WWW.CHOLYKNIGHT.COM) |





## 28. ATTACH THE ARMS

- Grab your **ARMS** and align them onto the side of your gargoyle. The shoulder area should be nestled into the corner between the **side seam** and the **neck**.
- Double check that the hands are even with the bottom of the feet. This will help the plush sit upright. Adjust the placement of your arms if you need to so the hands and feet are even.
- To attach the arms, use a ladder stitch around the shoulder area. Along the top, stitch closely to the **arm seam** (from step 25).
- After going around the shoulder, flip up the arm and stitch underneath. Stitch around the cut you made before to completely secure the arm. Repeat for both arms.



## 29. SEW THE HORNS

- Grab your **HORN** pieces (1). Take two and align them with right sides facing and the raw edges matching up.
- Sew the pieces around the long curved edge, but leave the short straight edge open for turning the piece right side out.



sew desu ne?

| [WWW.CHOLYKNIGHT.COM](http://WWW.CHOLYKNIGHT.COM) |

### 30. ATTACH THE HORNS



- a. Trim the excess seam allowance around the curves to reduce bulk and increase flexibility when the piece is turned.
- b. Turn the **HORN (l)** right side out through the opening. Define the point with a chopstick or similar turning tool.
- c. Stuff it semi-firmly with stuffing.
- d. Sew a gathering stitch around the opening of the horn, about  $\frac{1}{4}$ " away from the opening.

#### GATHERING:

The process of shortening the length of a piece of fabric by sewing long stitches through it. When the thread is pulled, it forms small folds that ruffle the fabric.

#### GATHERING STITCH:

A long version of the running stitch, which is a stitch done by weaving the needle in and out of a length of fabric going along a line. The long stitches (about  $\frac{1}{4}$ "- $\frac{1}{2}$ " long) gather the fabric when pulled later.

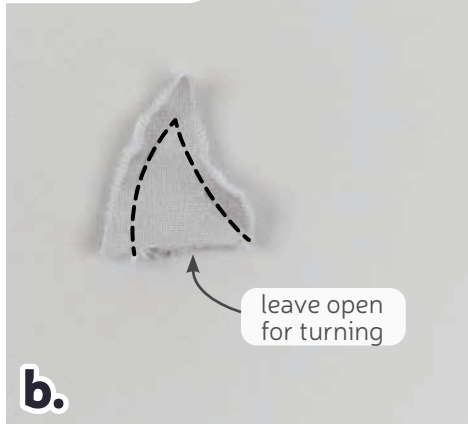


- e. Take your horn and pull at the gathering threads and this should cinch the opening closed. Sew a few knots into the center to hold it closed.
- f. Align the horn onto the head of your plush. You can place it how you prefer, but here it's placed just inside the ears with the tips pointing backward.
- g. Ladder stitch the horn in place around the base, then repeat once more for both horns.

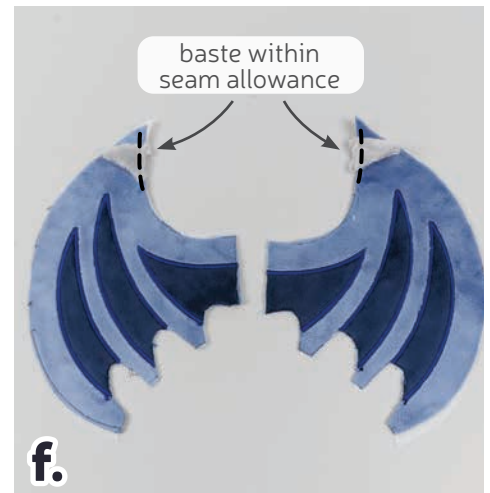
sew desu ne?

| [WWW.CHOLYKNIGHT.COM](http://WWW.CHOLYKNIGHT.COM) |

### 31. SEW & BASTE THE WING SPURS



- a.** Grab your **WING SPUR** pieces (K). Take two of them and align them with right sides facing and the raw edges matching up.
- b.** Sew the pieces together along the curved edges. Leave the straight edge free for turning the piece right side out. This is also labeled on the paper pattern since the edges look similar.
- c.** Trim the excess seam allowance at the corner of the spur to reduce bulk for when the piece is turned.



- d.** Turn the spur right side out and define the point with a chopstick or similar turning tool. Repeat with the other spur pieces so you have two total.
- e.** Grab your two appliqued **WING** pieces (J). If you haven't already, note the **wing spur placement lines** found on the paper pattern for the wing. Align the open edge of the wing spur within these lines so the raw edges match up.
- f.** Baste the wing spur to the wing within the seam allowance to hold them in place for future steps. Repeat this with both wing spurs so you have a mirrored pair.

sew desu ne?

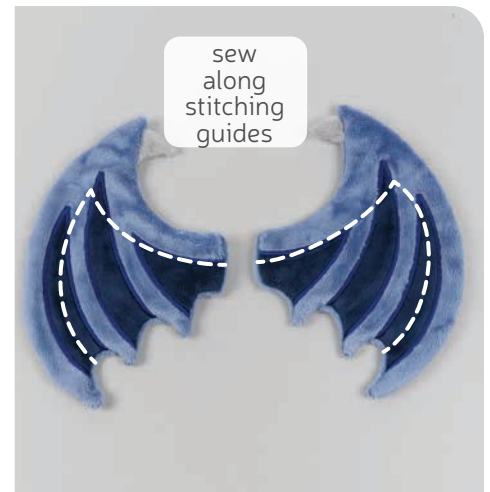
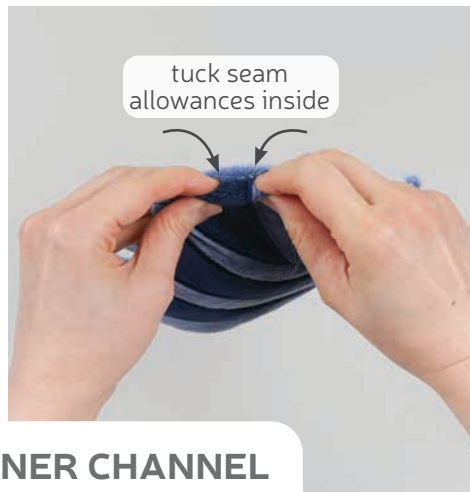
| WWW.CHOLYKNIGHT.COM |





## 32. SEW THE WINGS

- Grab your blank **WING** pieces (J). Align one blank wing with one applied one so right sides are facing and the raw edges match up. Make sure the **WING SPUR** (K) is tucked inside and pin the fabrics together.
- Sew the wing pieces together all around the pointed edges. Leave the short straight edge free for turning the wing right side out.
- Trim the excess seam allowance around the tight corners and curves of the wing. This will help reduce bulk and increase flexibility around those edges so they turn more cleanly.



## 33. SEW THE PIPE CLEANER CHANNEL

- Turn the **WINGS** (J) right side out through the opening in the base. Define the points with a chopstick or similar turning tool.
- Tuck in the seam allowances at the opening. Fold under the fabric by about ¼".
- If you haven't already, note the **wire channel stitching guides** found on the paper pattern for the wing. This will create an opening to place your pipe cleaners later. Top stitch through the layers of the wing along these lines. Repeat for both wings for a matching pair.

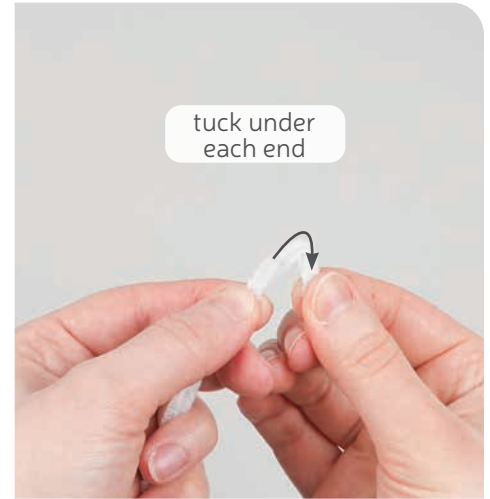
sew desu ne?

| [WWW.CHOLYKNIGHT.COM](http://WWW.CHOLYKNIGHT.COM) |



### 34. PREP THE PIPE CLEANERS

- a. Grab your two pipe cleaners. In order to strengthen them, we're going to wrap them around each other so they make one piece. Twist one pipe cleaner around the other all the way down.
- b. Fold over the ends of the pipe cleaners by about 1/2". This will keep the ends from accidentally poking anyone.



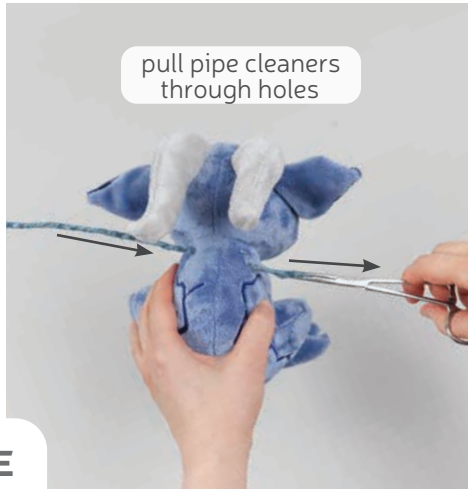
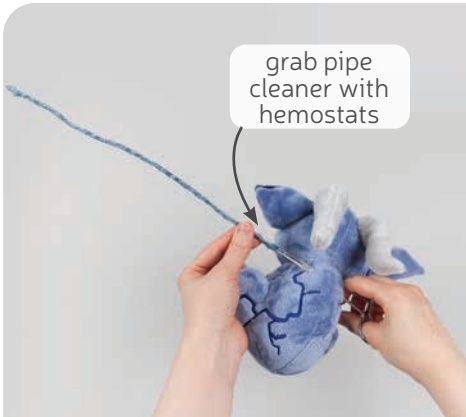
### 35. CREATE THE WIRE HOLES

- a. To insert the pipe cleaners, we're going to make some small holes in the back of the plush. Begin by transferring the **placement markings** from the paper pattern for the holes. The holes for the wings are centered between the center back seam and the side seam and they're 1/4" down from the neck seam.
- b. Using the tip of your sharpest, smallest scissors, poke a small hole into the **wing markings** on each side.
- c. Use these holes to insert your pipe cleaner through the body. If you have hemostats it makes the process much easier. Insert the hemostats through both holes, in one hole and out the other. If the hemostats don't fit, you can cut the hole larger, but only 1-2 millimeters. The fabric will quickly spread out from even the smallest cut.

→ If you cut a hole that's too big, you can cinch it closed again with a gathering stitch.

sew desu ne?

| [WWW.CHOLYKNIGHT.COM](http://WWW.CHOLYKNIGHT.COM) |



### 36. EVEN OUT THE WIRE

- Grab your pipe cleaner from the other side of the body.
- Pull the pipe cleaner out so now it's going through both holes.
- Bend the pipe cleaner so it's even on both sides.



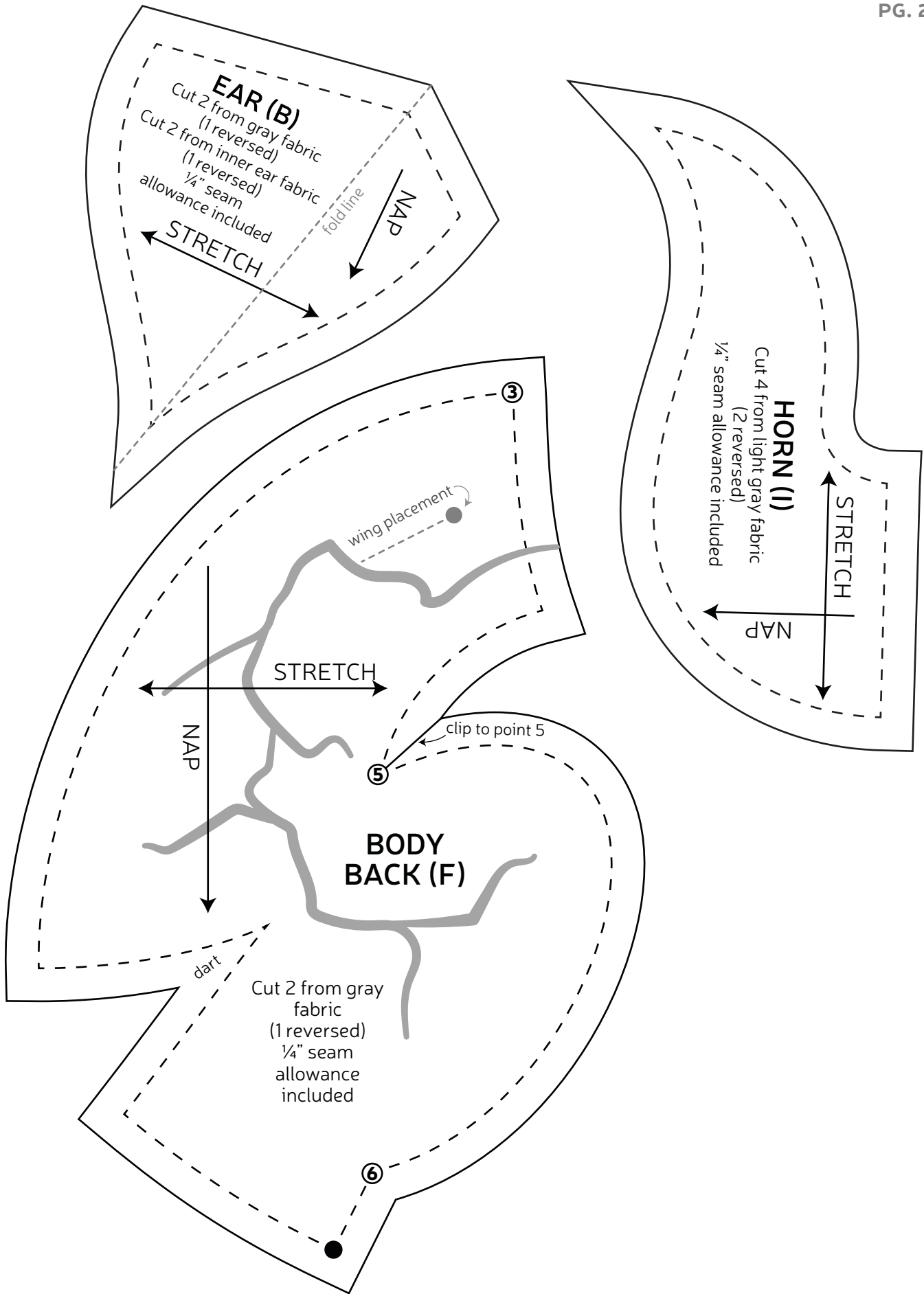
### 37. ATTACH THE WINGS

- Slide the **WINGS** (J) onto the wire using the channels you stitched in step 33. Align the wings so they're flush against the side of your plush's body.
- Ladder stitch the folded edge of the wing to the body of your plush.
- Go around to the other side so you've ladder stitched all the way around. Repeat for both wings.

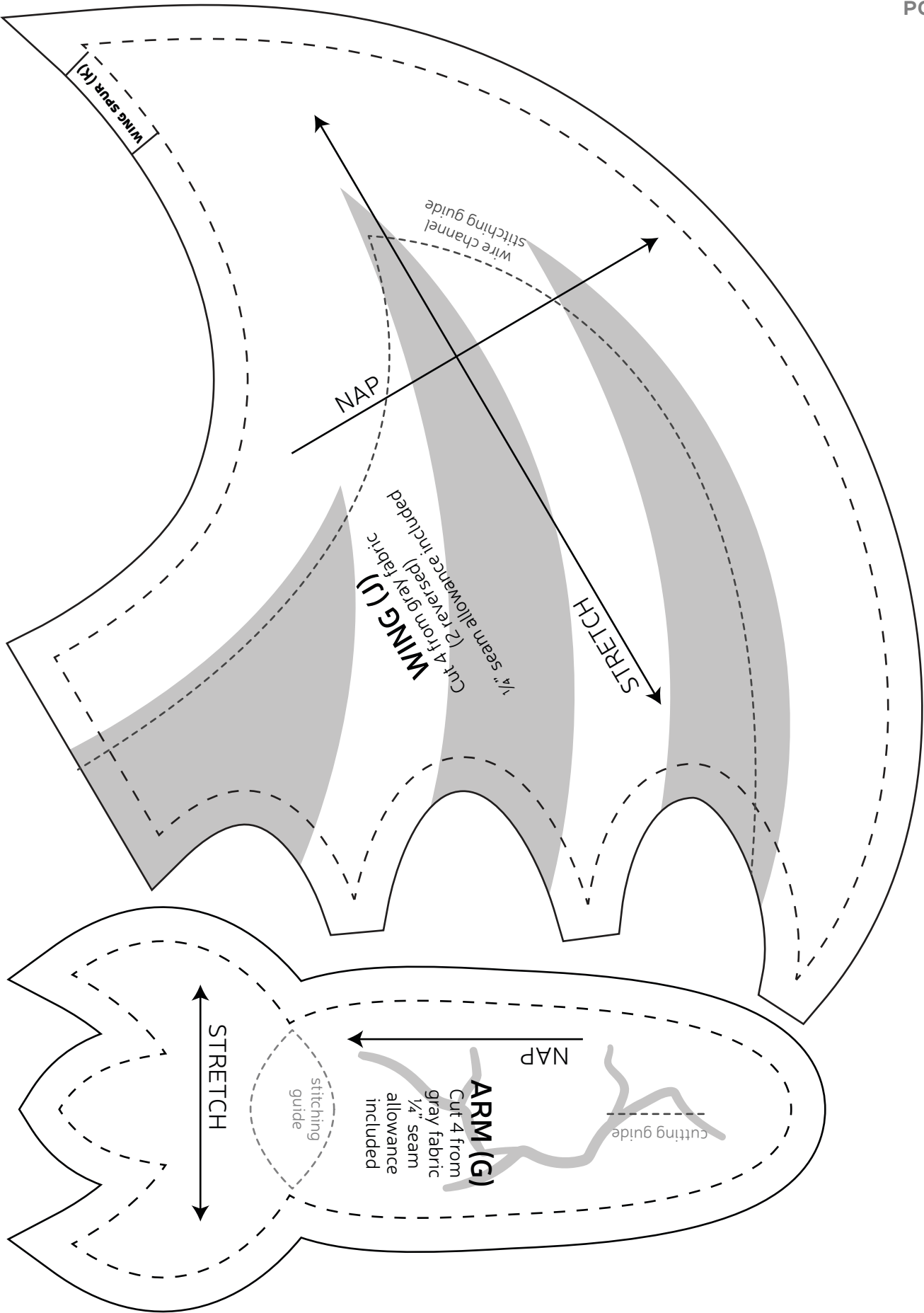
sew desu ne?

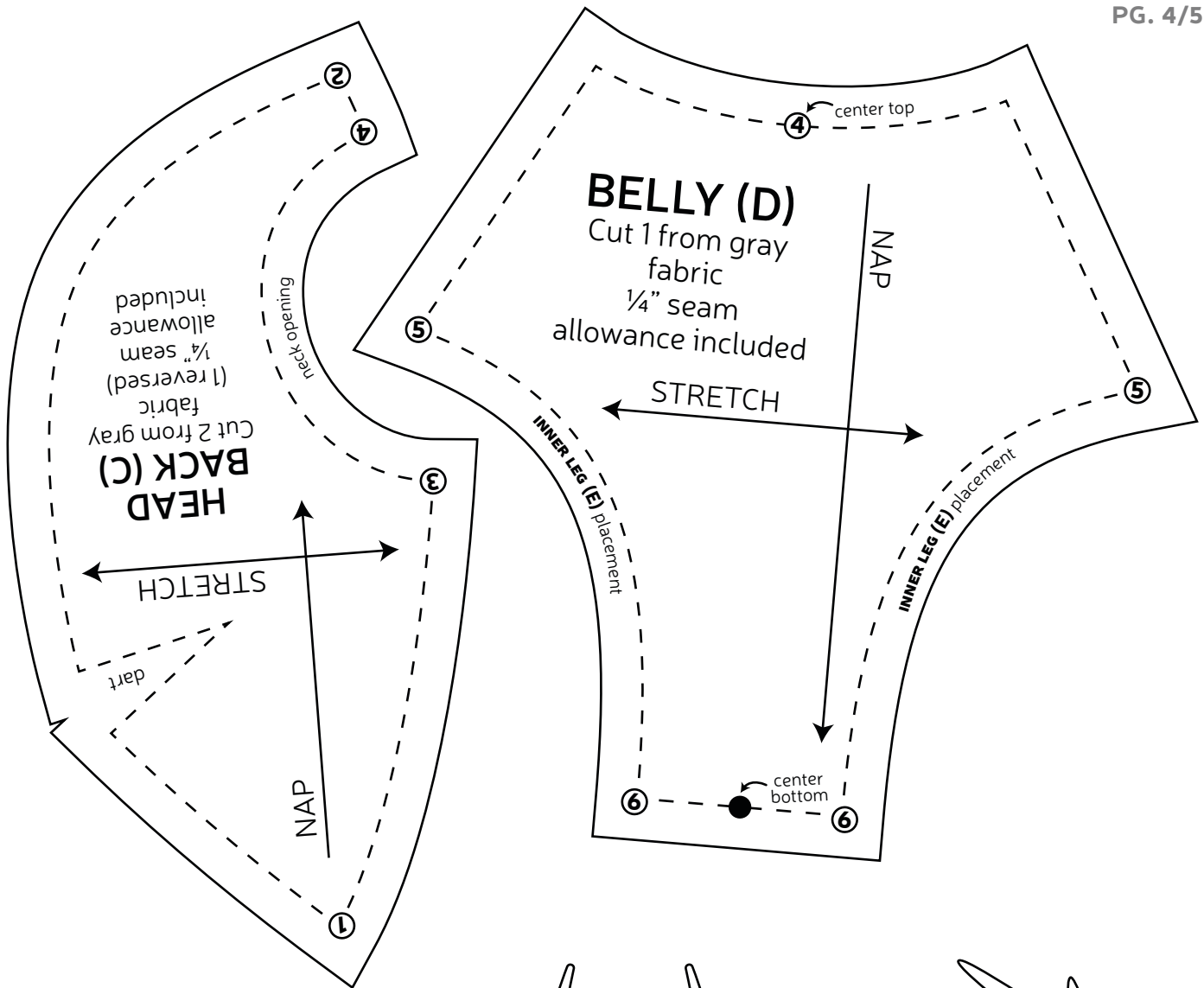
| [WWW.CHOLYKNIGHT.COM](http://WWW.CHOLYKNIGHT.COM) |





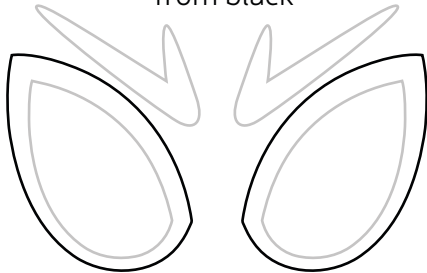






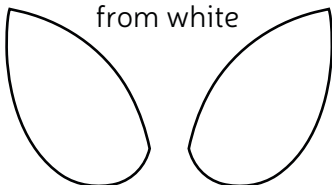
**OUTER EYES**

*applique*  
trace & cut 1 each  
from black



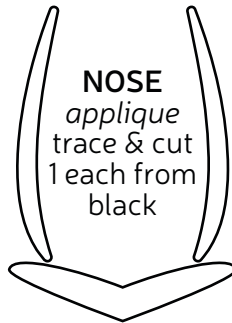
**EYES**

*applique*  
trace & cut 1 each  
from white



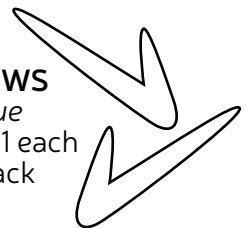
**NOSE**

*applique*  
trace & cut  
1 each from  
black



**EYEBROWS**

*applique*  
trace & cut 1 each  
from black



**TEETH**

*applique*  
trace & cut 1  
each from  
white



**MOUTH**

*applique*  
trace & cut 1 from black



**INNER WINGS**  
*applique*  
trace & cut 1 each from  
accent color

**ARM CRACKS**  
*applique*  
trace & cut 1 each  
from accent color

**BODY CRACKS**  
*applique*  
trace & cut 1 each  
from accent color

