

DRAGONITE

plush



a free sewing pattern by



dragonite plush

Dragonite is the final Pokemon evolution of Dratini and Dragonair. What starts as a majestic serpent-like creature becomes this chubby and lovable dragon! It features a big round body with stubby arms and feet. It has an especially thick tail, tiny antennae, and one small horn. The wings have an accent inner wing for a pop of color and can be attached with pipe cleaners so they stand up.

DIFFICULTY:



The most difficult part is sewing the snout. The shapes are very curved and require some time to line them up. Also, there is a lot of hand sewing in both the arms, tail, antennae, wings, and feet.

SKILLS USED:

- Fusible web applique
- Curved sewing
- Darts
- Ladder stitch
- Matching notches and points
- Gathering, gathering stitch
- Basting
- Sewing corners
- Using wire or pipe cleaners

MAKES:

About 10" tall (not including antennae), 7" wide (from each side of body), and 5" long (from front of feet to back of body). It's 10" long if you include the tail.



sew desu ne?

| WWW.CHOLYKNIGHT.COM |

MATERIALS & TOOLS:

- 1/3 yd. of orange fabric for main body
- 1/4 yd. (or 10" x 6") of dark teal fabric for inner wings
- 1/3 yd. (or 16" x 12") of light yellow fabric for belly
- 1/8 yd. (or 9" x 4") of white fabric for claws
- 4" x 4" of white applique fabric for eye whites and eye shines
- 3" x 3" of black applique fabric for irises and nostrils
- 3" x 3" of teal applique fabric for iris highlights
- 3" x 3" of light yellow applique fabric for foot pads
- 6" x 6" of light or heavy duty fusible web
- Two 12" long pipe cleaners
- sewing thread to match main fabric and applique fabrics
- poly-fil stuffing
- basic sewing tools (sewing machine, scissors, iron, needles, pins, fabric marker, seam ripper)

FUSIBLE WEB:

- Fusible web adhesive is a sheet of adhesive with a paper backing.
Not to be confused with fusible interfacing, which is adhesive attached to a fabric/fiber backing.
- Some common brands are **Pellon** & **HeatnBond**
- In countries outside the US, it may also be known as **bondaweb**
- It comes in **light** and **heavy duty** varieties. Lightweight strength is meant for applique you intend to sew later. Heavy duty versions are for a no-sew bond. If you try to sew them later your machine might have trouble penetrating the glue.



APPLIQUE FABRICS:

- Good applique fabrics include **flannel**, **cotton**, **felt**, **minky**, and **fleece**.
- Flannel and cotton are best for detailed applique with a lot of layers because they're thinner. Meanwhile felt, minky, and fleece are better for simpler applique like body markings.
- **Flannel** is used in the example instructions (page 7).



sew desu ne?

| WWW.CHOLYKNIGHT.COM |

fabric comparison:



MINKY VS. FELT



SUGGESTED FABRICS:

MINKY OR FLEECE

Medium weight, plush fabrics with about 20%-30% stretch along the crosswise grain work best for this project. The varieties shown to the left are some good options and names to look for. Try to avoid heavyweight versions of fleece that are intended for outdoor apparel or they may cause trouble for the detailed areas.

You can also use non-stretch fabrics (such as felt), but be aware that the curves will be more difficult to sew and the result will look different. The plush will become more elongated and the edges will look sharper.

10" of minky stretches to 13"
= 30% stretch



sew desu ne?

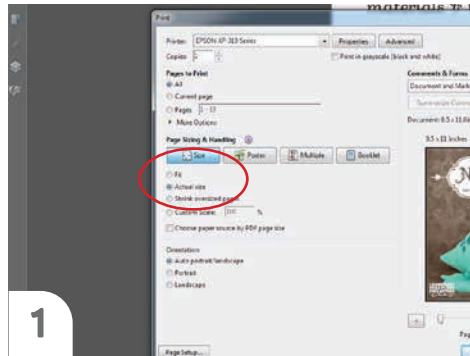
| WWW.CHOLYKNIGHT.COM |

PRINTING THE PATTERN:

Set your computer to print **PAGES 33-39**.

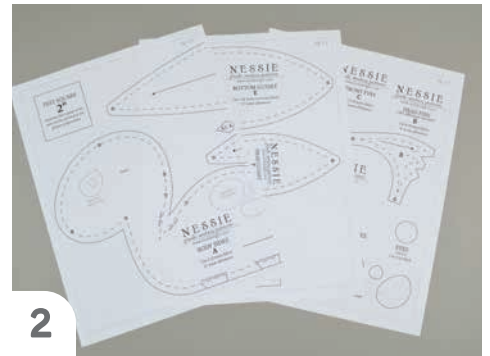
If you're unfamiliar with printing and assembling a .pdf pattern, read the steps to follow.

For the best results, use a .pdf reader like **ADOBE READER**. That's what is shown here and will give you the most control over the settings.



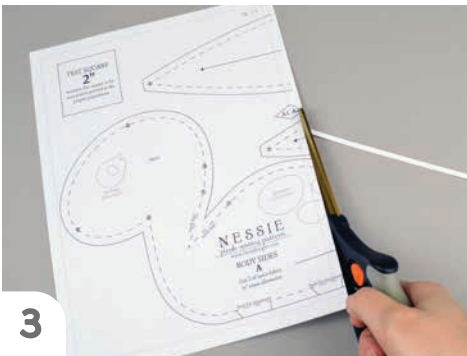
1

At the print dialog box, check the box that says print at "Actual Size" or 100%. Any other selection (such as "Fit to page") will distort the pattern so it's slightly larger or smaller and we don't want that.



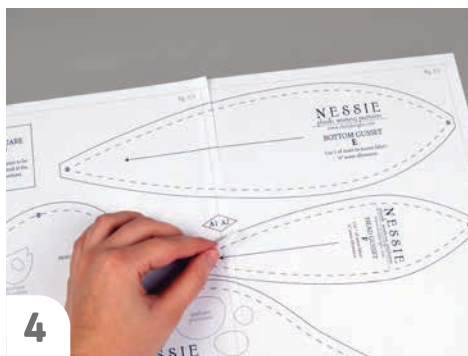
2

Print the pages needed for the file. You might have one or more. Either way, be sure you have the full collection by noting the page numbers in the corner.



3

It's likely your printer will have a margin that ensures your image doesn't print to the very edge. Assembly will be easier if you trim off this blank margin edge. This will give you pages that overlap slightly during assembly. If you trim across the gray outline boxes, this will give you pages that don't overlap but rather butt against each other.



4

To line up the pattern pages, match up the corresponding diamond shapes. Each diamond will have a letter, so it's simply a matter of matching A1 to A2, B3 to B4 and so on. The faint gray lines indicate the border of every page, you should be able to line those up as well. When the diamond goes together, tape it in place.

If you have many pages, it's easier to tape up the pages into rows first. Then tape the rows together into a full block.



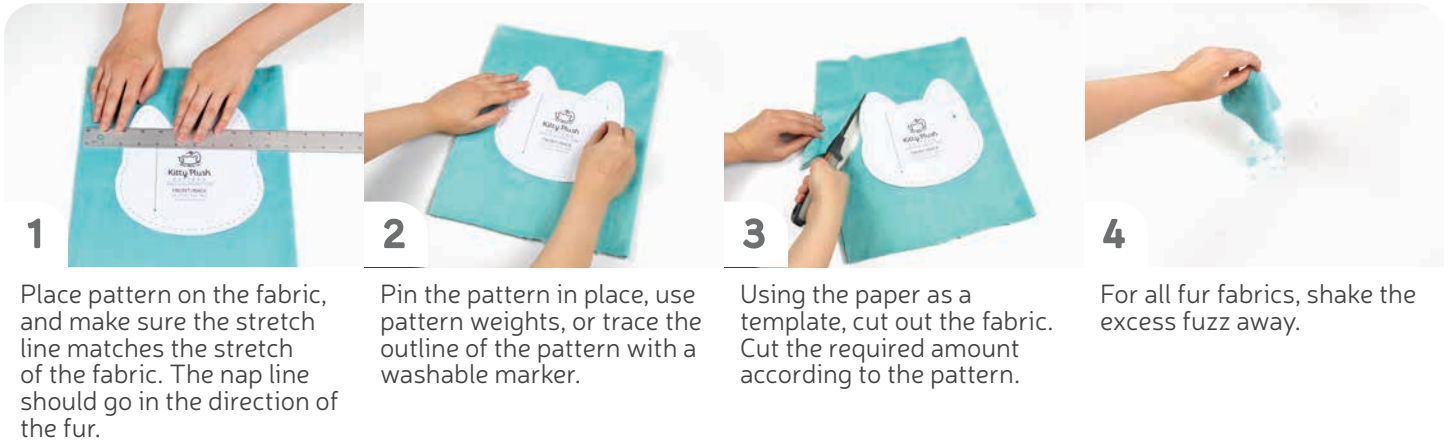
5

You can trace the patterns onto a different paper, or you can also just cut them straight from the printer paper -- be sure that each piece is fully taped together along the joins so they don't fall apart when you cut them.

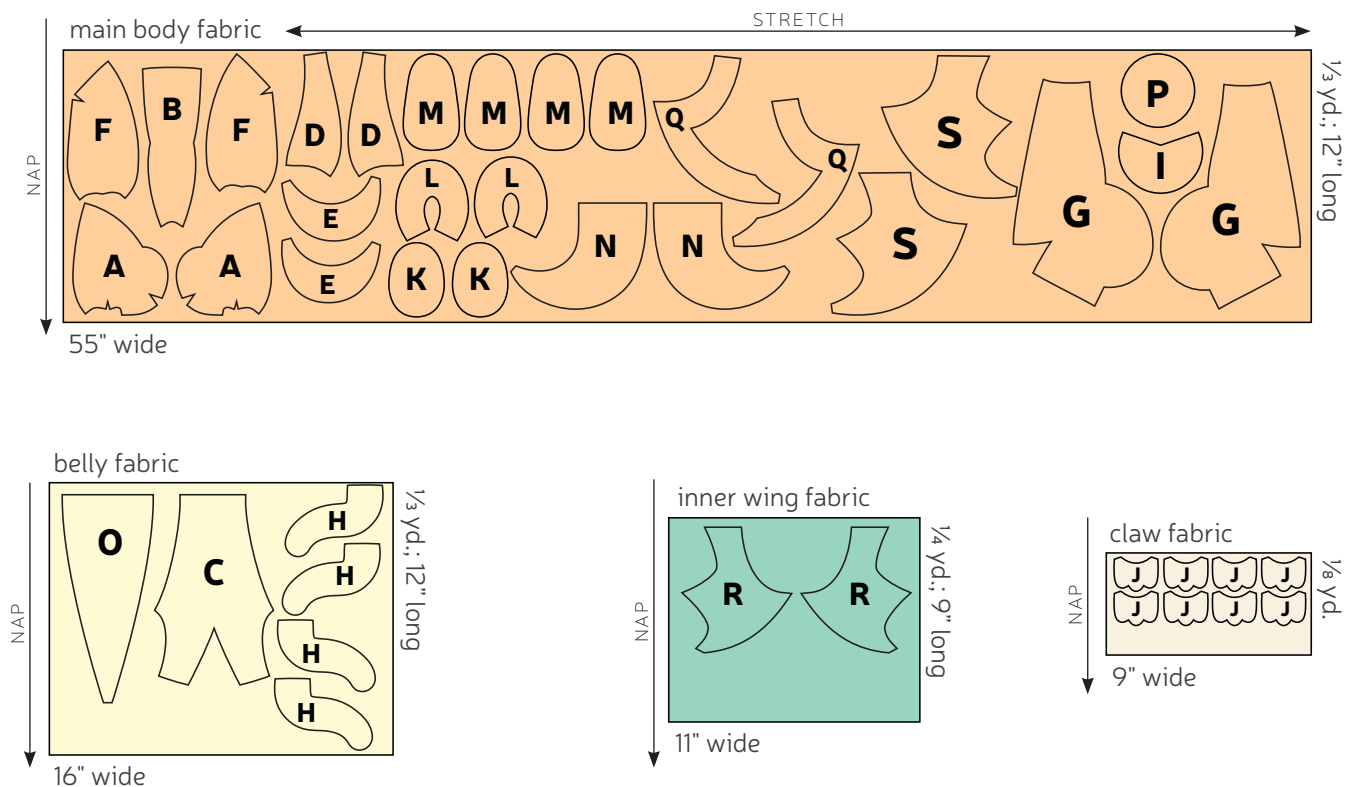
sew desu ne?

| WWW.CHOLYKNIGHT.COM |

CUTTING THE FABRIC:



CUTTING LAYOUT:



sew desu ne?

| WWW.CHOLYKNIGHT.COM |

BEFORE YOU BEGIN:

- Briefly read the project instructions so you know what to expect.
- If desired, mark the cut fabric pieces with the markings and symbols from the pattern. Or wait until the applicable step before transferring.
- Note that a ¼" seam allowance is used throughout the project, which is included in the pattern templates.

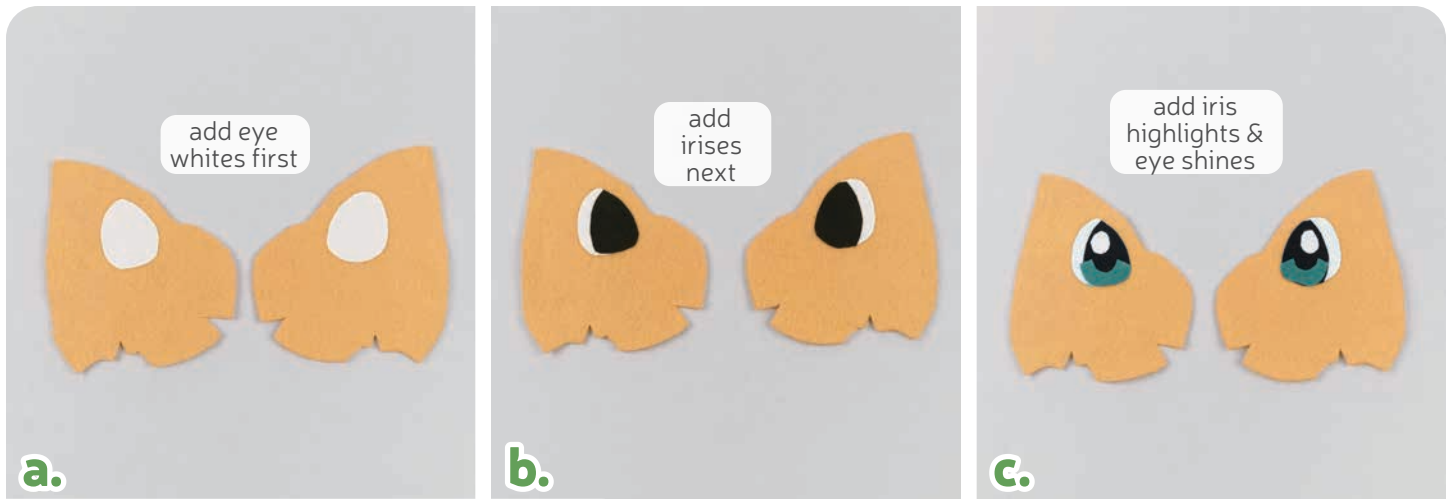


1. PREPARE THE FACE APPLIQUE

- Grab your fusible web and applique templates. Trace the pieces for the face. You should have:
 - **eye whites** (2, white)
 - **irises** (2, black)
 - **iris highlights** (2, teal)
 - **eye shines** (2, white)
 - **nostrils** (2, black)
- Fuse the bumpy (adhesive) side of the fusible web onto the applique fabrics.
- Cut out your applique pieces and grab your **HEAD SIDE** piece (A). Grab your **eye white** piece. Set your paper pattern on top of the head side piece. Align the applique piece on top where the placement markings are. Next, carefully pull the paper pattern away while holding the applique piece in place.

sew desu ne?

| WWW.CHOLYKNIGHT.COM |



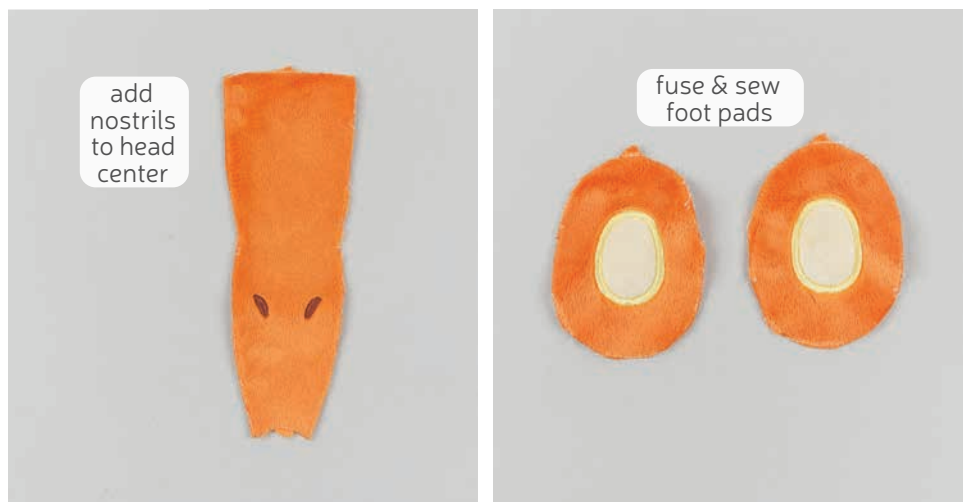
2. FINISH THE FACE APPLIQUE

- Fuse the applique pieces with your iron. Use a press cloth, such as a scrap piece of cotton. This will help protect any polyester or fuzzy fabrics from melting or scorching.
- Continue adding the next pieces; the **irises**.
- Continue adding smaller pieces, layering them over the previous ones. Use the paper pattern and photos as a guide. Next up are the **iris highlight and eye shine** pieces.

3. FUSE THE NOSTRILS AND FEET

- Take this time to also applique your nostrils to the **HEAD CENTER** piece (B). Use the same method as the eyes.
- Repeat the same process for the two light yellow foot pads on the **FOOT BOTTOM** pieces (K).

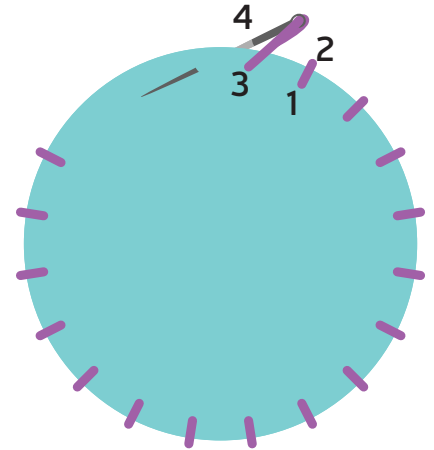
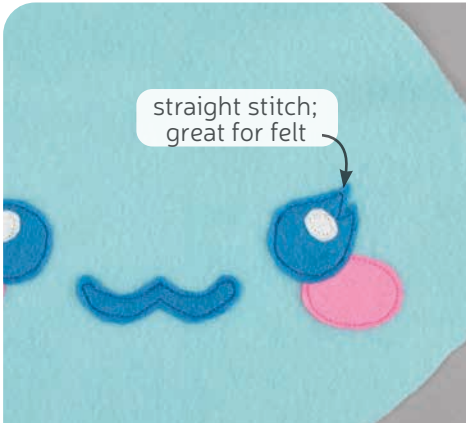
If you used heavy duty fusible web, you can keep the pieces fused without sewing, or you can sew them in place a number of ways. I've used a zigzag stitch here.



→ Refer to the next step for some other applique options.

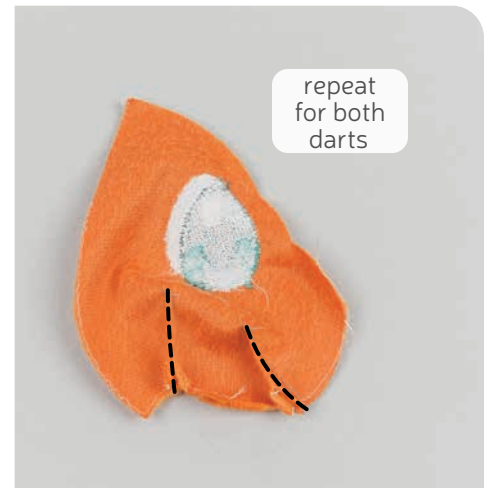
sew desu ne?

| WWW.CHOLYKNIGHT.COM |



4. OTHER APPLIQUE OPTIONS

- Other good options for applique include a straight stitch, which involves sewing around the edge of the applique pieces with a straight stitch using matching thread -- about 1/8" in from the edge.
- You can also applique by hand; I prefer a whipstitch. Thread a hand-sewing needle with some matching thread and knot it. Bring the thread up from the back of the project; about 1/8" in from the edge of the applique shape. Bring it down perpendicular from the curve, just outside of the applique shape. This completes one stitch.
- For the next stitch, bring the needle back up about 1/8" away from the previous stitch and 1/8" in from the edge just as in the first stitch. Once again, bring it down just outside the applique shape. Continue this way until you've sewn around the shape.

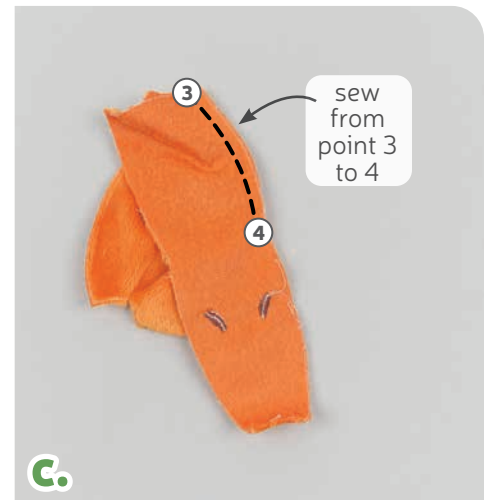


5. SEW THE HEAD SIDE DARTS

- Grab your **HEAD SIDE** pieces (A). These pieces have 2 **darts** each: one along the neck, and another along the nose. To sew them, start by folding the fabric along the point of one of the **darts** so the right sides are facing and the slanted edges match up.
- Sew the **dart** starting at the opening and working your way down into the fold of the fabric. Try to blend your fabric into the fold for a smooth transition and a rounder finish to the plush.
- Repeat this with the other **dart** at the neck so there are 2 **darts** total. Then repeat this again so each head side piece has 2 **darts**.

sew desu ne?

| WWW.CHOLYKNIGHT.COM |

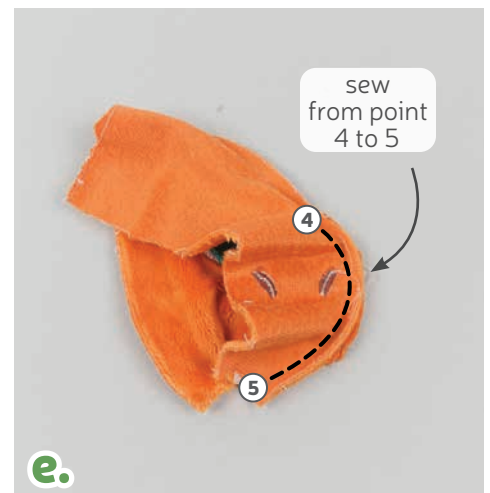


6. SEW THE HEAD CENTER TO THE SIDE

- Grab your **HEAD CENTER** piece (B) as well as your **HEAD SIDE** pieces (A). The long edges of the head center will be joined to the nose curve of the head sides. There are also **numbered points** to help with alignment: **points 3, 4, and 5**.
- Start by grabbing your head center piece and flipping it so it's right side facing with the head side. Line up **point 3** at the top corner and **point 4** at the corner at the top of the nose. Pin the fabrics together.
- Sew the forehead portion of the head by sewing from **point 3 to point 4**.

- Grab the bottom part of your head center piece and align it with the rest of the nose. **Point 5** should match up at the bottom corner for the neck. Make sure right sides are facing and pin the fabrics together.

- Sew from **point 4 to point 5** around the nose and down to the neck.



sew desu ne?

| WWW.CHOLYKNIGHT.COM |



7. ATTACH THE OTHER HEAD SIDE

- Grab your other **HEAD SIDE** piece (A). Align it with the other side of the **HEAD CENTER** following the previous step. Make sure right sides are facing and pin the fabrics together.
- Sew the head center to the side around **points 3, 4, and 5**. The head center should be joined on both sides now.
- Before turning the head right side out, make a clip into the seam allowance at **point 4**. This will help it turn more cleanly.
- When complete, your head front should look something like photo D.



- Grab your **BELLY** pieces (C). Dragonite has several ridges going along the belly and **TAIL** (O). To recreate them, we're going to top stitch along the fabric pieces. Start by tracing the **top stitching lines** from the paper pattern. It helps to cut along the line marked on the paper, then use it as a tracing template with a fabric marker.



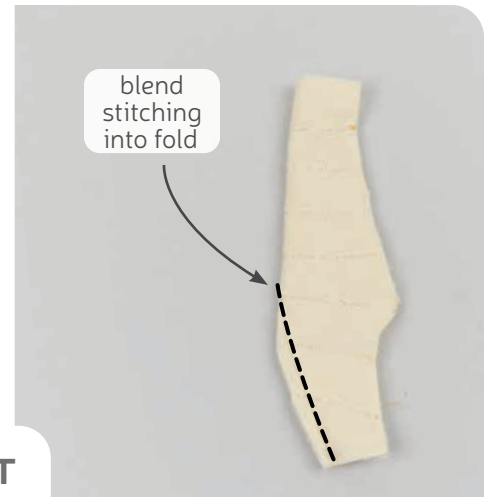
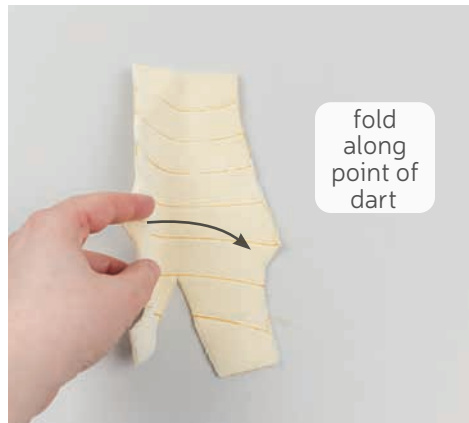
- Stitch along all of the traced lines to create the ridges.

8. TOP STITCH THE BELLY RIDGES

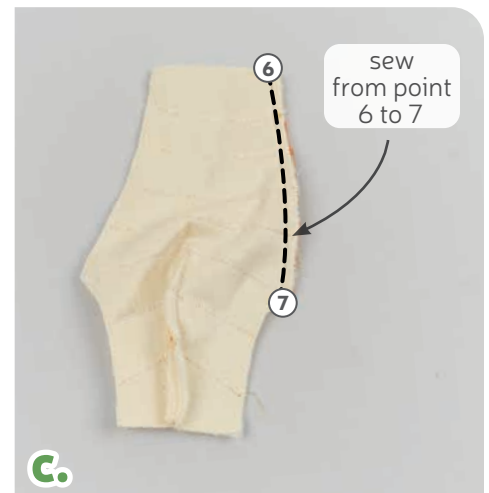
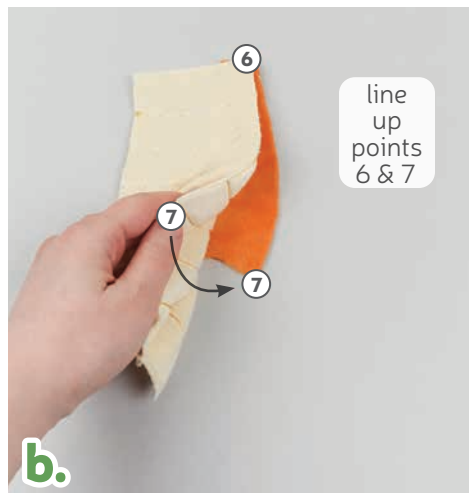
sew desu ne?

| WWW.CHOLYKNIGHT.COM |

- a. Take your **BELLY** (C) and sew the center bottom **dart** similar to the previous ones. Fold the fabric along the point of the **dart** so right sides are facing and the raw edges match up.
- b. Sew from the opening of the **dart** into the fold of the fabric so the stitching blends in with the fold.



9. SEW THE BELLY DART



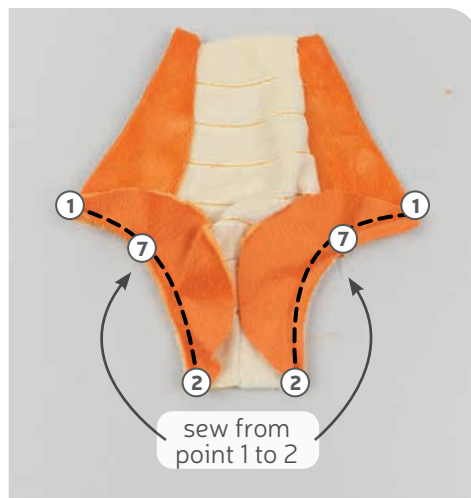
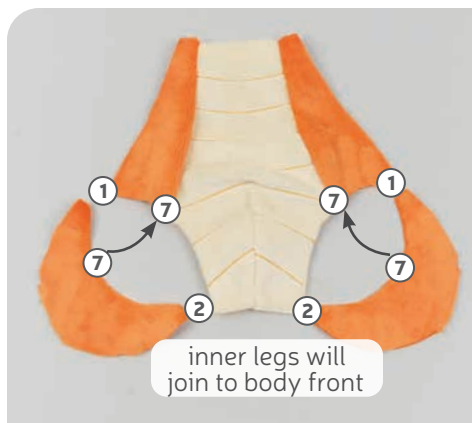
10. ATTACH THE BELLY SIDES

- a. Grab your **BELLY SIDE** pieces (D). These pieces will join to the sides of the belly along the inner edges as shown. But there are also numbered points for help with alignment: **points 6 and 7**.
- b. Grab your belly piece and flip it over so it lines up with the belly side with right sides facing. **Point 6** should align at the top for the neck, and **point 7** will align at the bottom at the inner leg area. Pin the fabrics together.
- c. Sew the belly side to the belly from **point 6 to 7**.
- d. Repeat this on the other side with your remaining belly side piece.



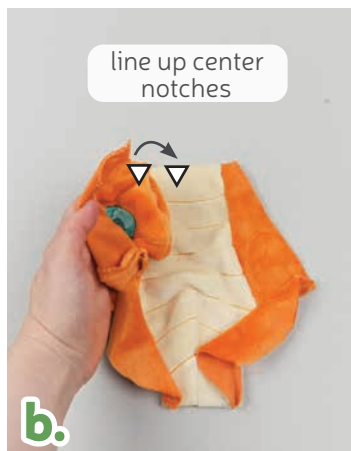
sew desu ne?

| WWW.CHOLYKNIGHT.COM |



11. ATTACH THE INNER LEGS

- Grab your **INNER LEG** pieces (E). The inner legs should match up with the body front along the inner curves. But there are also numbered points for help with alignment, **points 1, 7, and 2**.
- Align the inner leg with the belly front from **points 1 to 2**. Meanwhile **point 7** should align in the middle where the belly seam is. Make sure right sides are facing and pin the fabrics together.
- Sew the inner leg to the body front along the inner curve from **points 1 to 2**. Repeat with the other inner leg piece so both are joined.

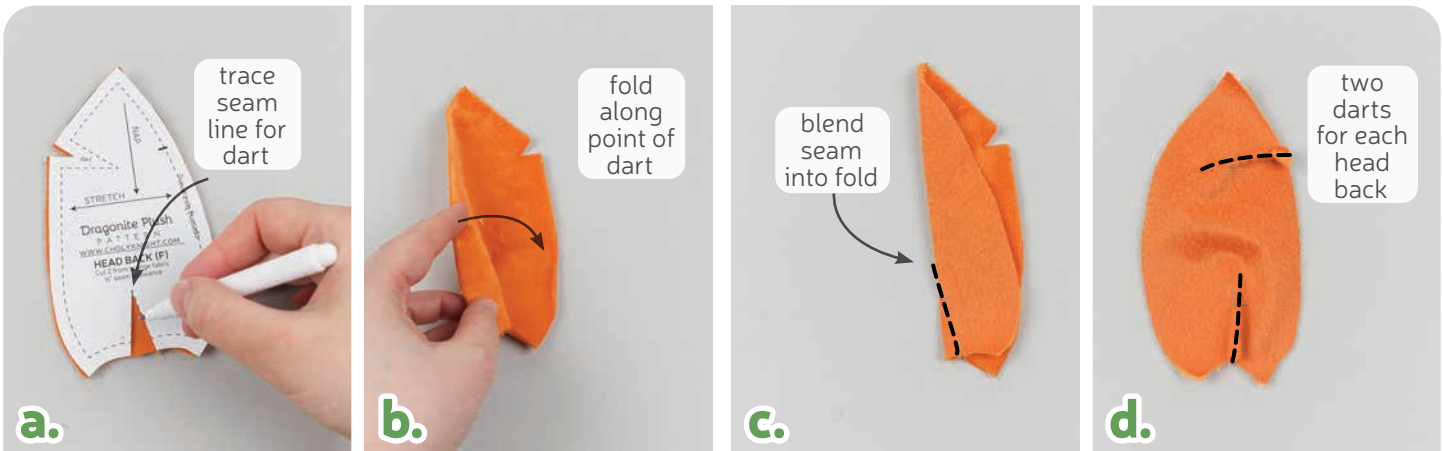


12. SEW THE FRONT NECK

- Grab your **HEAD FRONT** piece from before and your **BODY FRONT**. The **neck edges** of both of these pieces will be joined next. The neck edges are marked with **notches** in the center for easy alignment.
- Layer the head front over the body front, matching up the raw edges and **notches** at the center. Pin the fabrics together.
- Sew the head front to the body front along this **neck edge**.
- Open up the pieces when complete.
 - Set your body front aside for a while as we construct the back.

sew desu ne?

| WWW.CHOLYKNIGHT.COM |



13. SEW THE HEAD BACK DARTS

- Grab your **HEAD BACK** pieces (F). These pieces also have several **darts** like the head front. There should be one in the upper corner and another at the neck. The one at the neck is a little smaller, so it helps to trace the seam line from the paper pattern to sew it accurately. Trim away the paper pattern along the stitching line and use this to trace onto the back of your fabric.
- Sew the **darts** the same way as the previous ones, starting by folding the fabric along the point of the **dart**. This should match up the slanted edges.
- Sew from the opening of the **dart** into the fold of the fabric.
- Repeat for both the bottom neck **dart** and the upper corner **dart**. Repeat this for both head side pieces so you have two total.

- Take both of your **HEAD BACK** pieces (F) and align them with right sides facing and the raw edges matching up.
- If you haven't already, locate the **opening for turning markings** found on the paper pattern for the head back. Transfer them over to the wrong side of the fabric. Sew the head back pieces together along this edge only, but leave the opening that you marked. Open up the pieces when complete.

→ **Set aside your head back for a little while as we work on the body back.**

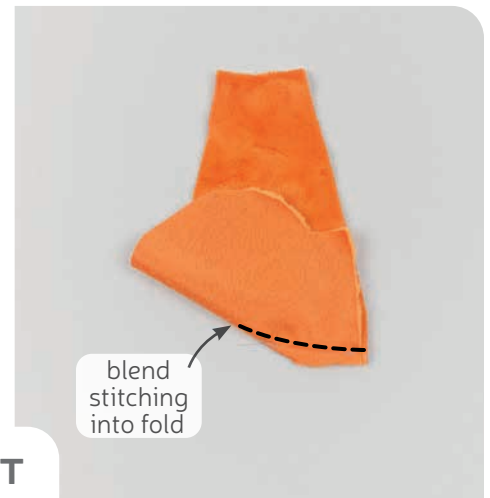
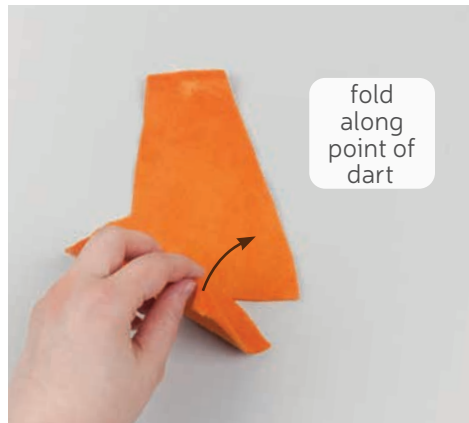


14. SEW THE HEAD BACK

sew desu ne?

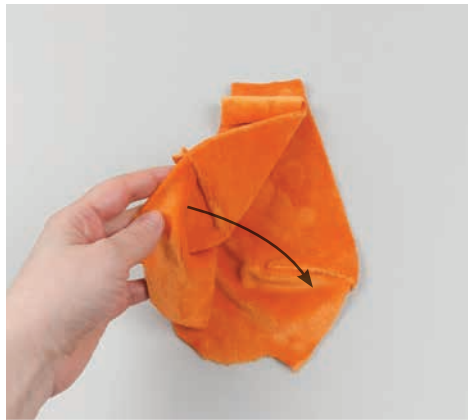
| WWW.CHOLYKNIGHT.COM |

- a. Grab your **BODY BACK** pieces (G). This piece also has a **dart**, found in the bottom corner. Sew it similar to the others, starting by folding it along the point of the **dart** and matching the slanted lines.
- b. Sew starting at the opening and work toward the point. Try to blend your stitching into the fold of the fabric. This will create a rounder finish for your plush. Repeat with your remaining body back piece for two total.



15. SEW THE BODY DART

- a. Take your two **BODY BACK** (G) pieces and align them with right sides facing and the raw edges matching up.
- b. Sew them together along the edge with the **dart** from the previous step. Open up the pieces when complete.



16. SEW THE BODY BACK PIECES

sew desu ne?

| WWW.CHOLYKNIGHT.COM |



17. SEW THE BACK NECK

- Grab your **HEAD BACK** pieces from before (F) and your **BODY BACK** (G). The **neck edges** of both of these pieces will be joined next.
- Layer the head back over the body back, matching up the raw edges and the **center seams**. Pin the fabrics together.
- Sew the head back to the body back along this **neck edge**.
- Open up the pieces when complete.

- Grab both of your front and back pieces so far. Align them with right sides facing. We're going to sew around the entire body. Experts should be able to handle this all in one go, but we're going to break it down into several parts for beginners. Start by aligning the head pieces. Match up the **center top circle marking** with the **head back seam**. The neck seams (from steps 12 and 17) should also match up.



18. SEW THE HEAD FRONT TO THE BACK

- Sew the head front to the back all the way around, starting at one side of the neck and going to the other.

sew desu ne?

| WWW.CHOLYKNIGHT.COM |



19. SEW THE BODY FRONT TO THE BACK

- a.** Next, line up the **BODY** pieces. This is the edge starting at the neck and going down to **point 1**. Make sure right sides are facing and pin the fabrics together.
- b.** Sew the body side, starting at the neck seam and going down to **point 1**.
- c.** Next pin the **INNER LEG** (E) to the outer curve of the **BODY BACK** (G). It starts at **point 1** and goes around to **point 2**. Make sure right sides are facing and pin the fabrics together.



- d.** Sew around the leg, from **point 1** to **point 2**.
- e.** At the edge between the legs, the **center dart** on the **BELLY** (C) will match up with the **back seam** (from step 16).
- f.** Pin and sew between the legs, from one **point 2** to the other.
Lastly, finish up the other side by repeating parts D through A in the other direction. Sew from **point 2** to **1**, then up the side, ending at the **neck seam**. This should take you all the way around the body.

sew desu ne?

| WWW.CHOLYKNIGHT.COM |



20. TURN & STUFF THE BODY

- a.** Before turning the body right side out, clip the seam allowances at the corners. This will help it turn more cleanly. This is particularly important at the **neck seam** and **points 1 and 2**.
- b.** Turn the body right side out through the opening in the back of the head.
- c.** Begin by stuffing the body with stuffing about halfway.



- d.** While the body is halfway stuffed, start filling up the legs by sneaking stuffing into them. It will help hold the stuffing in the legs if there is already stuffing in the body. Fill up the rest of the body, and sneak extra bits of stuffing into the legs if necessary. Keep filling the body until it's firm before moving onto the head.
- e.** Start stuffing the head. Begin by filling up the sides of the head halfway (just like with the body in part C).
- f.** Next, fill up the nose. If there's already some stuffing in the head, this will help keep it in place. Stuff it enough so there are no wrinkles in the fabric near the seams and darts. Fill up the rest of the head until it's completely firm. If possible, sneak extra bits of stuffing into the neck.

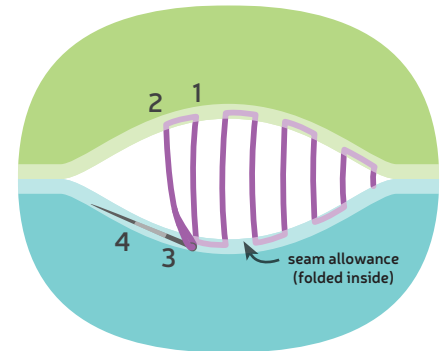
sew desu ne?

| WWW.CHOLYKNIGHT.COM |



21. SEW THE HEAD CLOSED

- Continue stuffing the plush until the head and body are firm.
- Once the plush is stuffed, make sure the seam allowances in the opening are tucked inside and prepare to ladder stitch it closed. Thread a hand-sewing needle and knot it at the end. Insert the needle from the inside of the opening and out of the plush near one edge of the opening. This will leave the knot inside the plush.
- Continue from here doing a ladder stitch. Take a $\frac{1}{8}$ " stitch into the fold of one side of the opening, then go across and take another. Keep going down the opening until you reach the end.

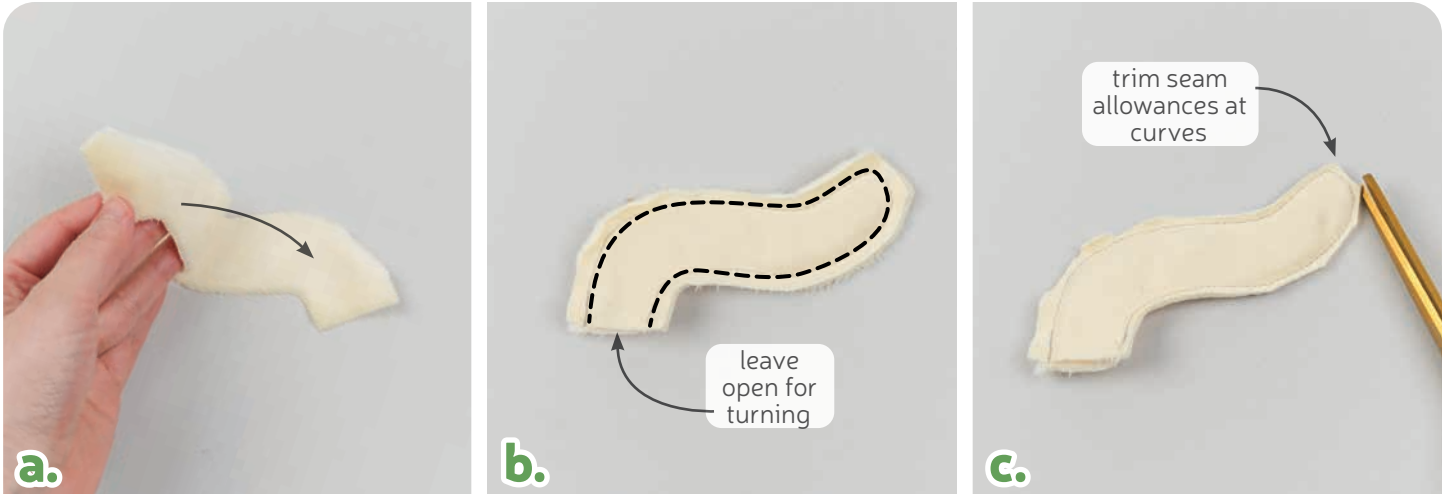


- When you're finished, stitch a knot into the end of the seam. Then insert the needle near the finished knot. Bring the needle out about 1-2" away and pull it through.
- Pull the thread taut while snipping the thread. The excess thread should sink back inside the plush -- all hidden!



sew desu ne?

| WWW.CHOLYKNIGHT.COM |



22. SEW THE ANTENNAE

- Grab your **ANTENNAE** pieces (H). Take two and align them with right sides facing and the raw edges matching up.
- Sew the pieces around the long curved edge, but leave the short straight edge open for turning the piece right side out.
- Trim the excess seam allowance around the curves to reduce bulk and increase flexibility when the piece is turned.



- Turn the antenna right side out through the opening.
- Stuff it semi-firmly with stuffing.
- Sew a gathering stitch around the opening of the antenna, about $\frac{1}{4}$ " away from the opening.

GATHERING:

The process of shortening the length of a piece of fabric by sewing long stitches through it. When the thread is pulled, it forms small folds that ruffle the fabric.

GATHERING STITCH:

A long version of the running stitch, which is a stitch done by weaving the needle in and out of a length of fabric going along a line. The long stitches (about $\frac{1}{4}$ "- $\frac{1}{2}$ " long) gather the fabric when pulled later.

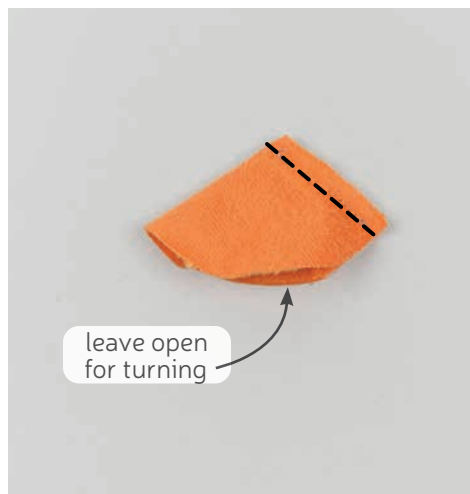
sew desu ne?

| WWW.CHOLYKNIGHT.COM |



23. ATTACH THE ANTENNAE

- Take your **ANTENNA** (H) and pull at the gathering threads and this should cinch the opening closed. Sew a few knots into the center to hold it closed.
- Align the antenna onto the head of your plush. Make sure the tip is pointing backwards and the cinched end is facing the plush. It should be aligned inside the corner between the head side and head center seams.
- Ladder stitch the antenna in place around the base, then repeat once more for both antennae.



24. SEW THE HORN

- Grab your **HORN** piece (I). Fold it in half with right sides facing so the straight edges match up. It should make a wide triangle shape.
- Sew the horn piece along the straight edge only to complete the triangle shape.
- Turn the horn right side out through the opening in the bottom.

sew desu ne?

| WWW.CHOLYKNIGHT.COM |



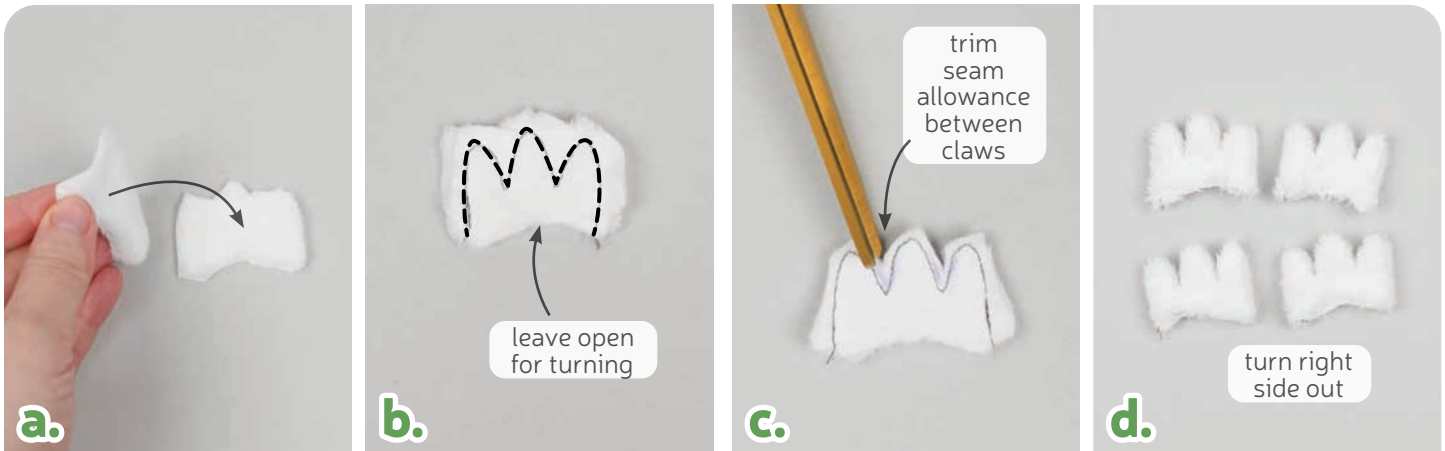
25. ATTACH THE HORN

- a. Grab your **HORN** (I) and sew a gathering stitch around the raw edge, about $\frac{1}{4}$ " away from the edge.
- b. Pull at the thread lightly so it closes up just a little. While it's halfway closed, stuff the horn lightly with stuffing. Be sure to get a small bit in the tip so the horn stays pointy.
- c. Continue pulling at the gathering thread to cinch the horn closed. Sew a few knots into the center to keep the horn closed.
- d. Take your finished horn and align it onto the head of your plush. It should be centered along the back of the head, right behind the top seam. Make sure the cinched end is facing the plush.
- e. Secure the horn in place by ladder stitching around the base.



sew desu ne?

| WWW.CHOLYKNIGHT.COM |



26. SEW & BASTE THE CLAWS

- Grab your **CLAW** pieces (J). Take two of them and align them with right sides facing and the raw edges matching up.
- Sew the pieces together around the pointed edge. Leave the slightly curved edge free for turning the piece right side out. This edge also has a **notch marking** for easy identification.
- Trim the excess seam allowance between the claws to reduce bulk and increase flexibility when the piece is turned.
- Turn the claws right side out through the opening. Define the points with a chopstick or similar turning tool.

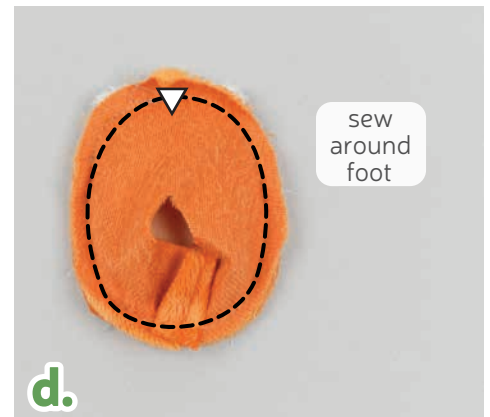
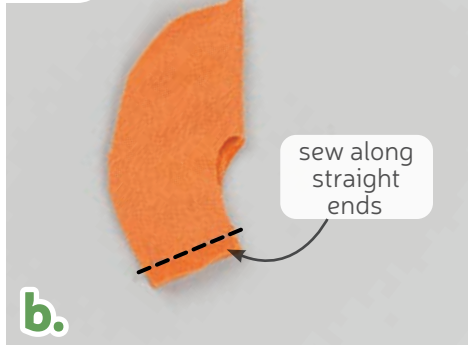


- Grab your **FOOT BOTTOM** (K) and **ARM** pieces (M). These pieces will have claws basted to them. They have **notch markings** as well to help align them to the claws. Align one of your claw pieces to the foot bottom so the **notches** match up and the raw edges are aligned.
- Baste the claw to the foot bottom within the seam allowance to hold it in place for future steps.
- Repeat this with your arm piece. Now repeat parts E and F once more so you have claws for both feet (2 total) and both arms (2 total). This should use up all 4 claws.

sew desu ne?

| WWW.CHOLYKNIGHT.COM |

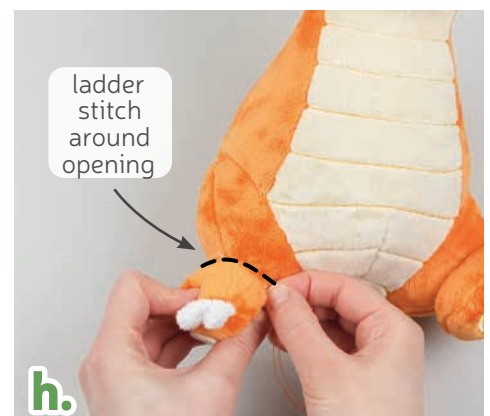
27. SEW & ATTACH THE FEET



- Grab your **FOOT BACK** pieces (L). Fold it in half with right sides facing so the short straight edges match up.
- Sew the foot along the short straight edge. This should leave a hole in the middle.
- Take this piece and align it with your **FOOT BOTTOM** (K) so right sides are facing and the **notches** along the top match up.
- Sew the foot back to the bottom all the way around. Be sure that the claws are tucked inside and this should catch them in the seam.



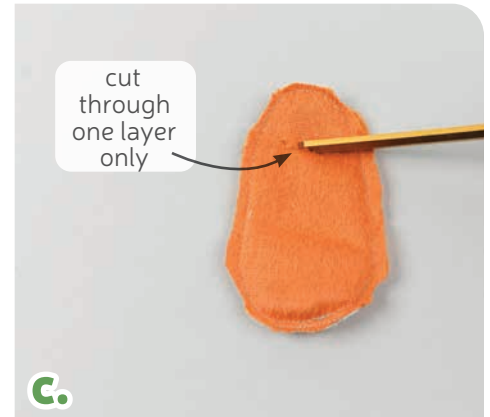
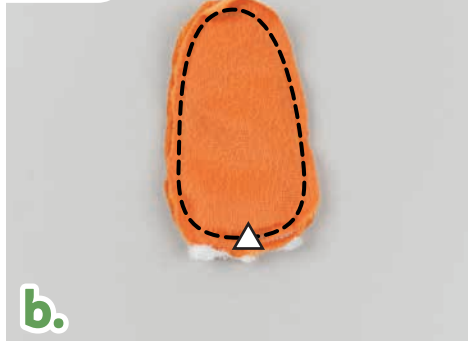
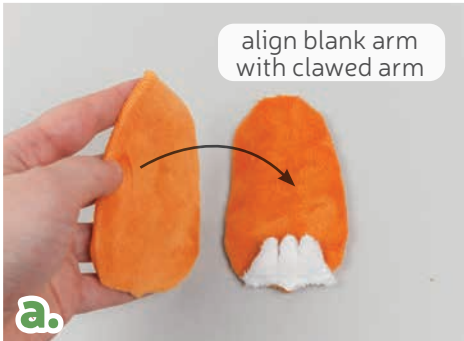
- Turn the foot right side out through the opening in the foot back.
- Stuff the foot semi-firmly with stuffing.
- Align the foot onto the leg of your plush. The side with the hole should face the plush and the toe claws should be pointing up.
- Ladder stitch the foot to the leg around the opening that you left. Repeat for both feet.



sew desu ne?

| WWW.CHOLYKNIGHT.COM |

28. SEW & ATTACH THE ARMS



- Grab your **ARM** pieces (M). Take one arm with a **CLAW** basted (J) and one blank arm. Align them with right sides facing and the raw edges matching up.
- Sew around the outside edge of the arm all the way around the shape. The claws should be secured inside the seam.
- To turn the arms, cut a short slit through one layer of the fabric only near the top center of the arm. There's also cutting guide for extra help.
- Turn the arms right side out through the opening.



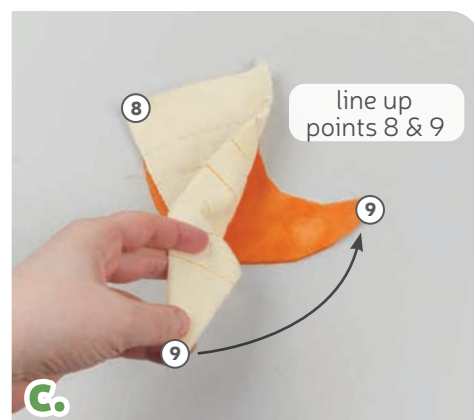
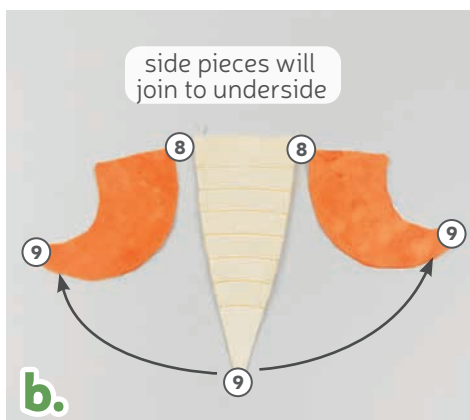
- Stuff the arm semi-firmly with stuffing through the opening.
- Take your arm and align it onto the body of your plush. Here it's placed about $\frac{3}{4}$ " down from the neck seam, slightly overlapping the side seam. There's also a **placement guide** on the **BELLY SIDE** (D) paper pattern for help.
- Ladder stitch the arm to the body, sewing near the arm seam when attaching the shoulder.
- For the underside of the arm, you'll have to flip it up and sew beneath the arm. Repeat for both arms.



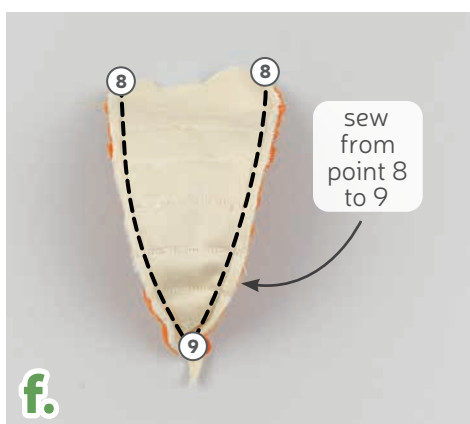
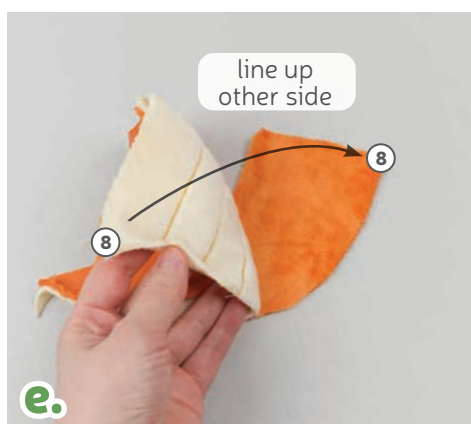
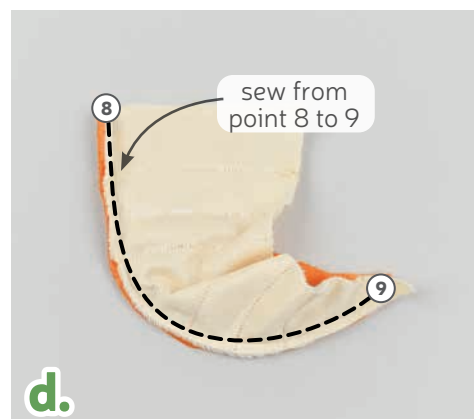
sew desu ne?

| WWW.CHOLYKNIGHT.COM |

29. SEW THE TAIL



- If you wish to add ridges to the tail of your plush, grab your **TAIL UNDERSIDE** piece (O) and follow step 8 for transferring and stitching the top stitching lines for the belly.
- Next we're going to sew the long underside piece around the curves of the **TAIL SIDES** (N). The edges that come together next are marked with **points 8 & 9** for easy identification and to help ensure the pieces don't get flipped.
- Line up the tail underside with one of the side pieces so right sides are facing and **points 8 & 9** match up. Pin the fabrics together.
- Sew the tail underside to the side from **point 8 to 9**.



- Grab your other side piece. We're going to join it to the other side of the tail underside piece. Line up **points 8 & 9** as before. The three pieces will come together at the point of the tail.
- Sew the side to the tail underside from **point 8 to 9**. When complete, both sides of the tail underside should be sewn.
- Lastly, line up the two tail side pieces. Pin the fabrics together.
- Sew from the base of the tail down to **point 9**. All of your seams from before will converge at the tip here.



sew desu ne?

| WWW.CHOLYKNIGHT.COM |



30. FINISH THE TAIL

- Grab your **TAIL BASE** piece (P) as well as your tail so far. Take the open end of the tail and align it around the base so right sides are facing. For extra help, the top seam should align with the **notch marking** on the base. Meanwhile the **circle markings** should align at the bottom. Pin the fabrics together.
- Sew the tail to the base all the way around the shape.
- Trim the excess seam allowance around the tip to reduce bulk when the piece is turned.



- To turn the tail right side out, cut a slit into the center of the base piece only.
- Turn the tail right side out through the opening you've cut.
- Stuff the tail firmly with stuffing. Be sure to get small bits in the tip of the tail so it stays pointy.

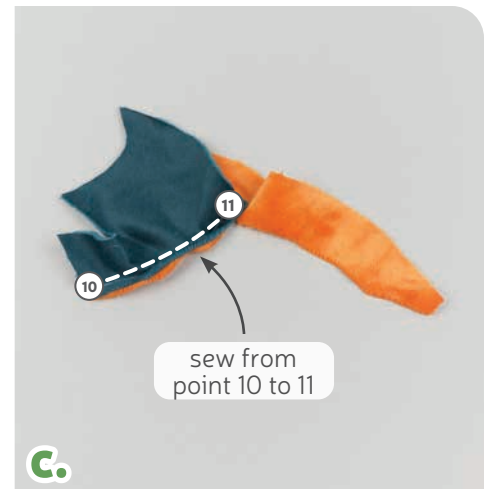
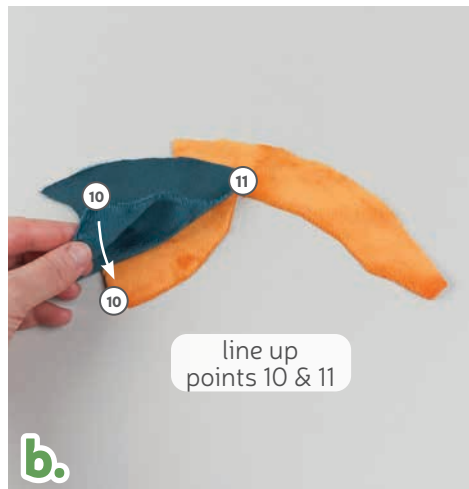
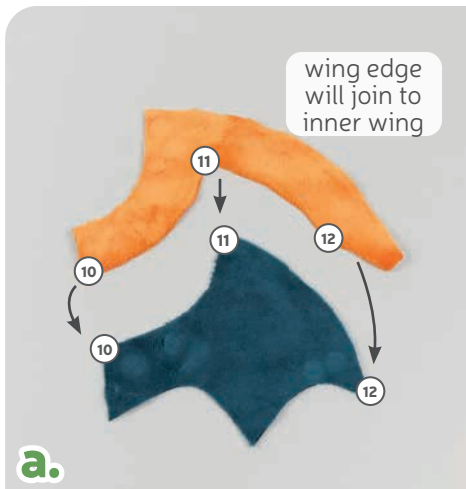
sew desu ne?

| WWW.CHOLYKNIGHT.COM |

- a. Take your tail and align it onto the back of your plush so the base is above the back **darts**. Make sure the tip of the tail is pointing up.
- b. Ladder stitch the tail to the plush around the base.



31. ATTACH THE TAIL



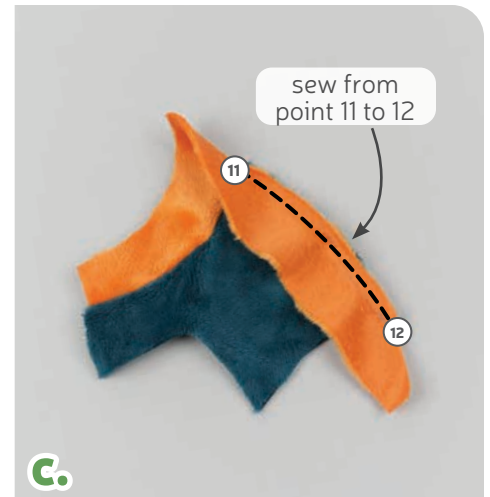
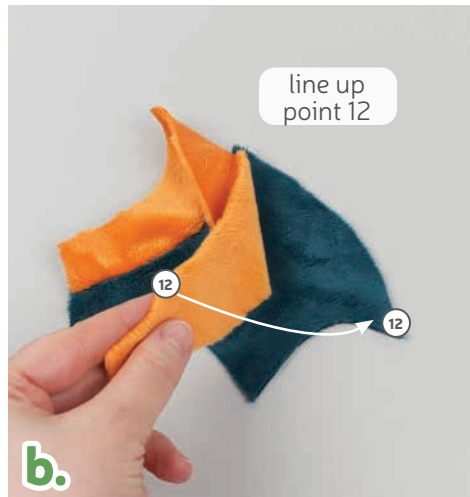
32. ATTACH THE INNER WING

- a. Grab your **WING EDGE** and **INNER WING** pieces (Q & R). We're going to attach them along the inner edge, but there are also **numbered points** for help with alignment, **points 10, 11, and 12**. We're going to sew one section at a time to make it easier.
- b. Start by aligning your inner wing piece with the wing edge, matching up **points 10 and 11**. Make sure right sides are facing and pin the fabrics together.
- c. Sew the inner wing to the wing edge from **point 10 and 11**. This is easier to do with the inner wing fabric on top.
- d. Open up the pieces when complete.



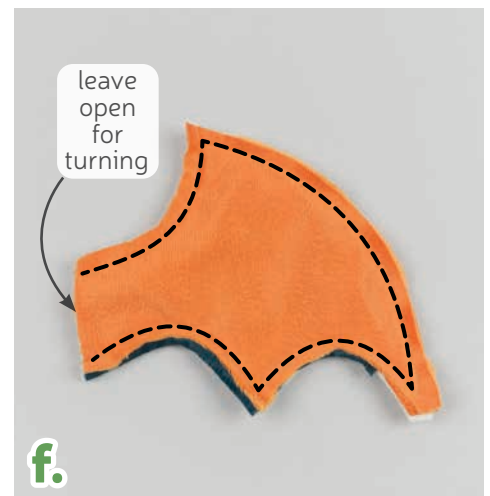
sew desu ne?

| WWW.CHOLYKNIGHT.COM |



33. SEW THE WING

- Take your **WING EDGE** fabric and clip into the seam allowance in corner at **point 11**. This will allow the fabric to bend around the corner easier.
- Flip your wing over, then take the other side of your wing edge fabric and align it with the inner wing so right sides are facing and **point 12** matches up at the end. Make sure right sides are facing and pin the fabrics together.
- Sew the wing edge to the inner wing from **point 11 to 12**. This is easier to do with the wing edge fabric on top. Repeat this step with your remaining inner wing and wing edge pieces so you have two wings.



- When complete, your wing should look something like photo D. Check the corner at **point 11** for any gaps.
- Grab your **BACK WING** pieces (S). Align it with one of the front wing pieces you've sewn in the previous step. Make sure right sides are facing and the raw edges match up.
- Sew the pieces together all around the pointed edges. Leave the short straight edge open for turning the piece right side out later.

sew desu ne?

| WWW.CHOLYKNIGHT.COM |



34. TOP STITCH THE WING

- Trim the excess seam allowance around the tight corners and curves. This will reduce bulk and increase flexibility when the piece is turned later.
- Turn the piece right side out through the opening you left. Define the points with a chopstick or similar turning tool.
- Tuck in the seam allowances in the opening of the wing by $\frac{1}{4}$ ". This should make the opening of the wing folded.
- Top stitch along the front of the wing. First stitch along the seam you made in steps 32-33. This will create the wire channel for later. Then stitch from the corner at **point 11** down to the tip of the wing. This provides an accent.



35. PREP THE PIPE CLEANERS



- Grab your pipe cleaners. In order to strengthen them, we're going to wrap them around each other so they make one piece. Twist one pipe cleaner around the other all the way down.
- Fold over the ends of the pipe cleaners by about $\frac{1}{2}$ ". This will keep the ends from accidentally poking anyone.

sew desu ne?

| WWW.CHOLYKNIGHT.COM |



36. INSERT THE WIRE

- a. To insert the pipe cleaners, we're going to make some small holes in the back of the plush. Begin by transferring the **placement markings** from the paper pattern for the holes. The holes for the wings are centered between the center back seam and the side seam and they're $\frac{1}{4}$ " down from the neck seam.
- b. Using the tip of your sharpest, smallest scissors, poke a small hole into the **wing markings** on each side.
- c. Use these holes to insert your wire through the body. If you have hemostats it makes the process much easier. Insert the hemostats through both holes, in one hole and out the other. If the hemostats don't fit, you can cut the hole larger, but only 1-2 millimeters. The fabric will quickly spread out from even the smallest cut.

→ *If you cut a hole that's too big, you can cinch it closed again with a gathering stitch.*



- d. Grab your wrapped wire from the other side of the body.
- e. Use your hemostats to pull the wire through both sides.
- f. Pull the wire through so it's even on both sides.

sew desu ne?

| WWW.CHOLYKNIGHT.COM |



37. ATTACH THE WINGS

- Slide the wings onto the wire using the channels you stitched in step 34. Align the wings so they're flush against the side of your plush's body.
- Ladder stitch the folded edge of the wing to the body of your plush.
- Go around to the other side so you've ladder stitched all the way around. Repeat for both wings.



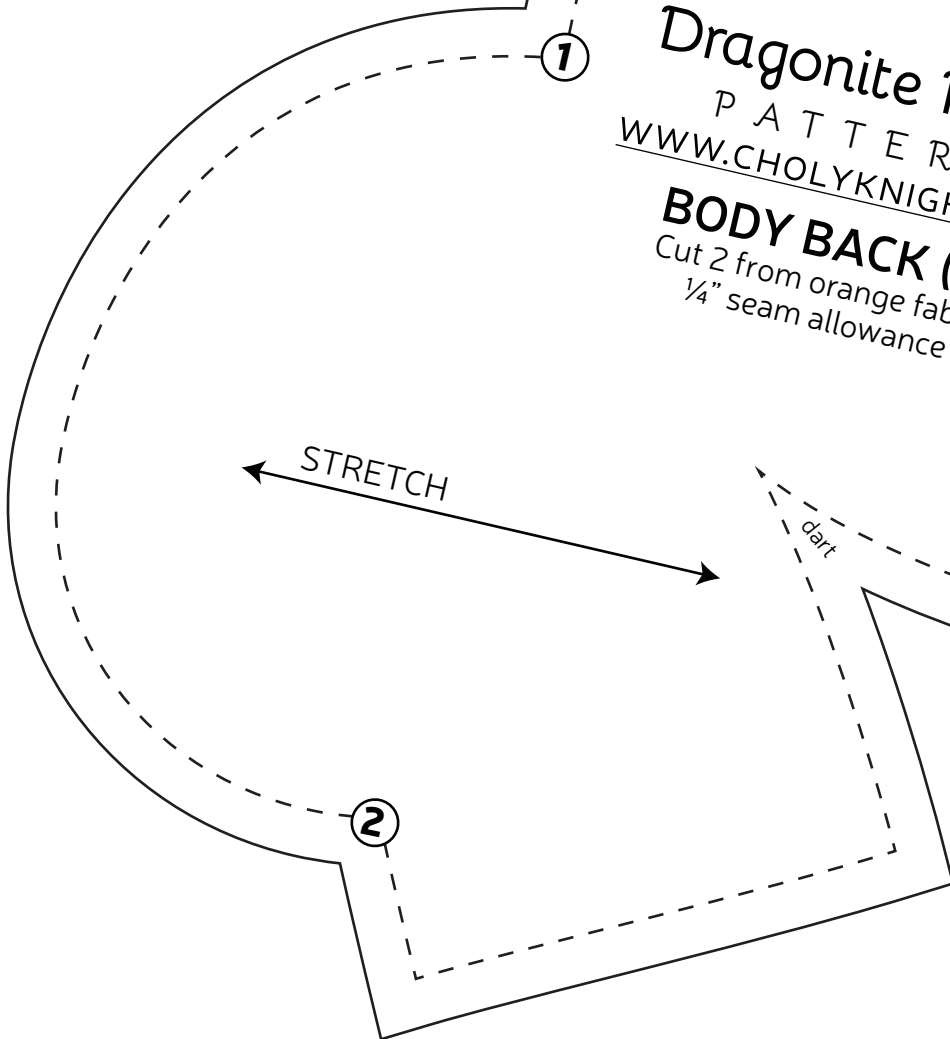
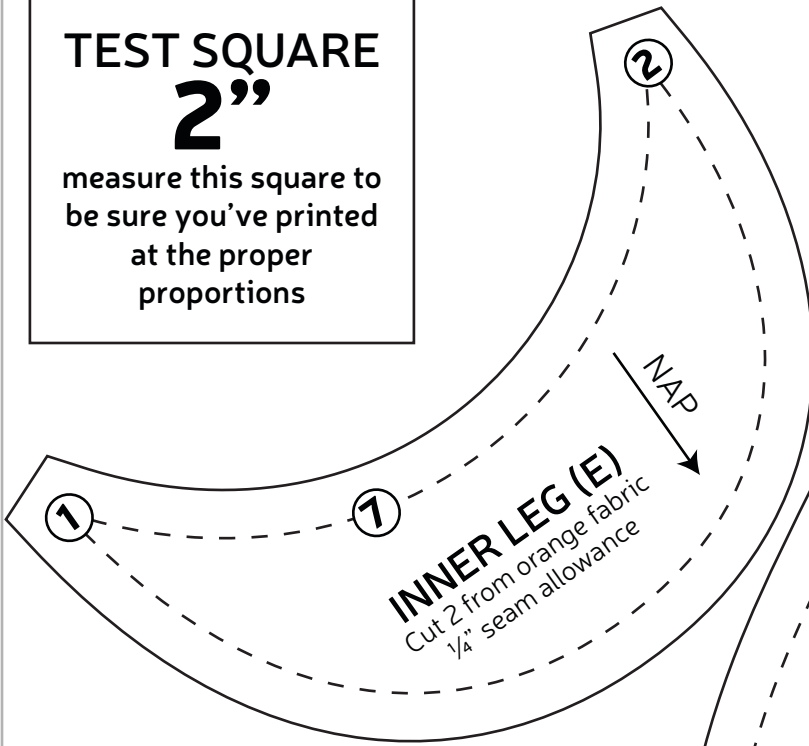
CONGRATS!
This completes your plush! Now give it a big hug!

sew desu ne?

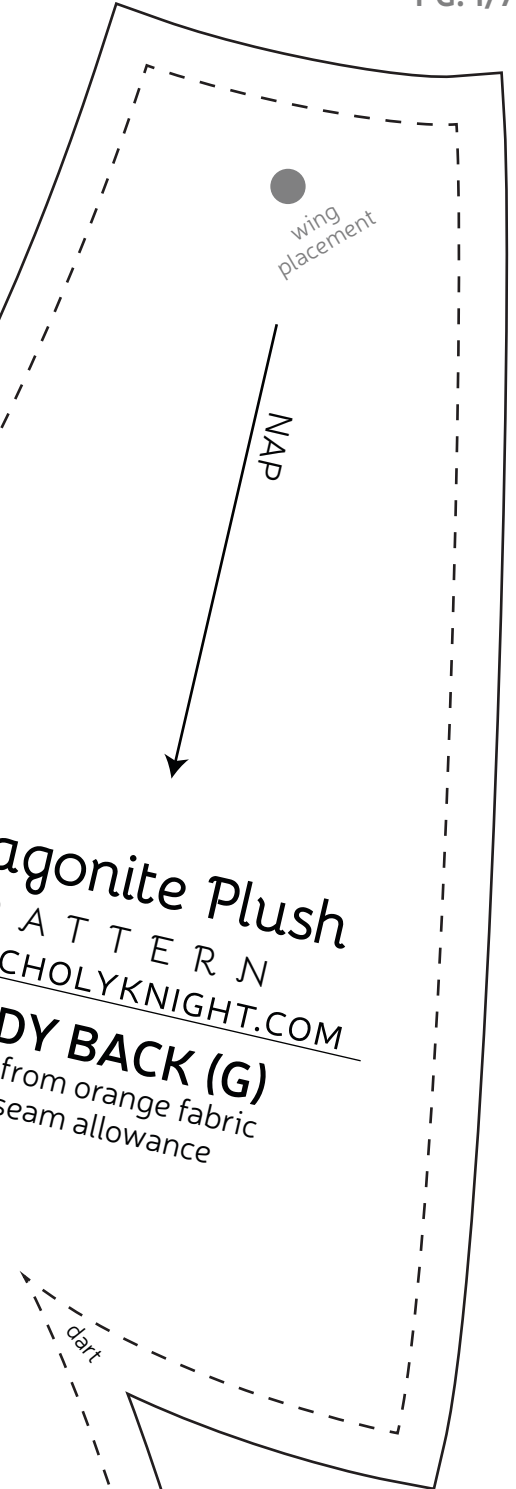
| WWW.CHOLYKNIGHT.COM |

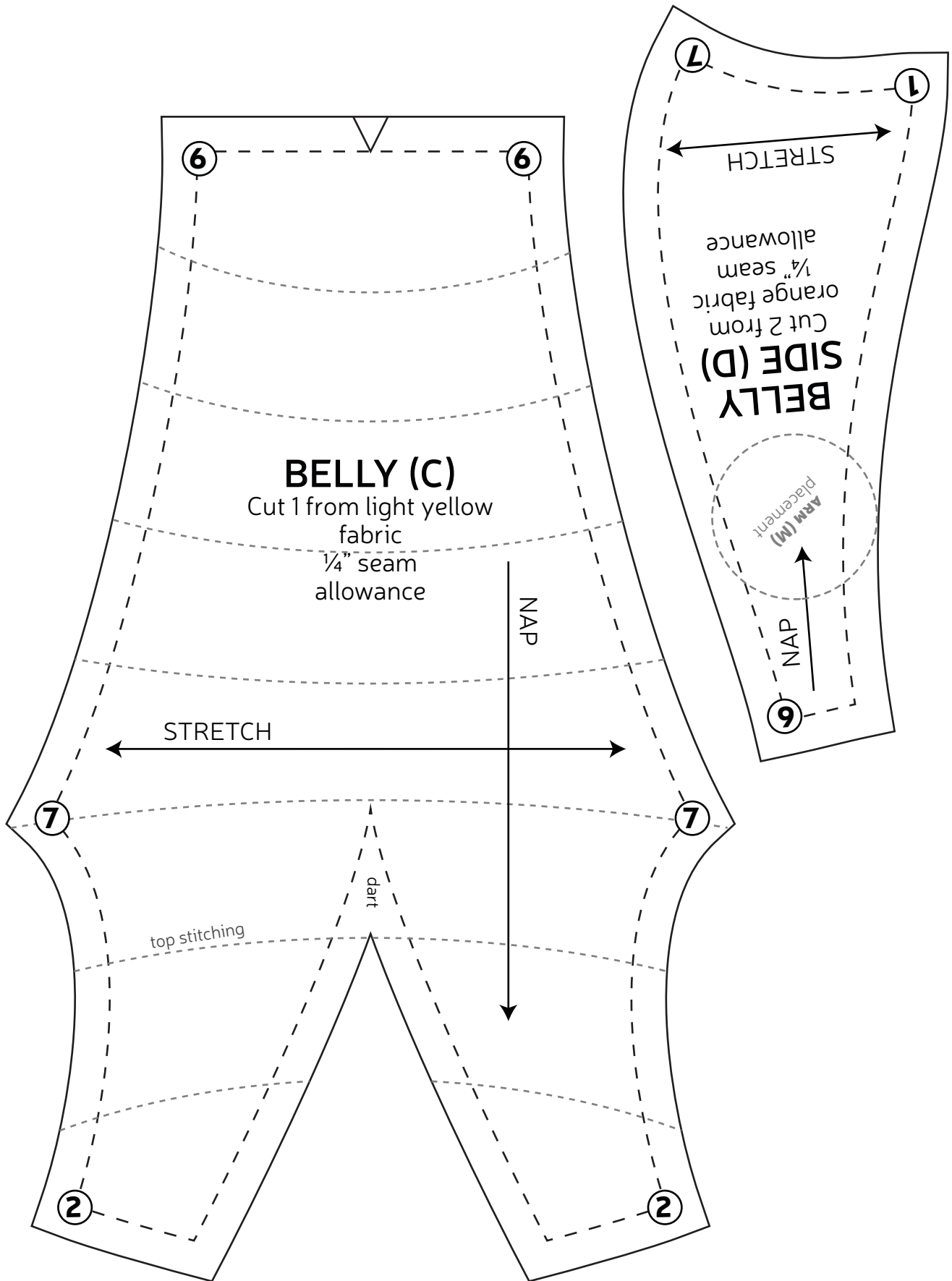
TEST SQUARE 2"

measure this square to
be sure you've printed
at the proper
proportions



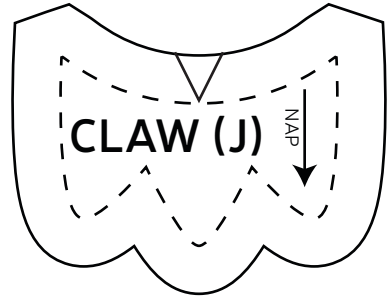
Dragonite Plush
P A T T E R N
WWW.CHOLYKNIGHT.COM
BODY BACK (G)
Cut 2 from orange fabric
1/4" seam allowance





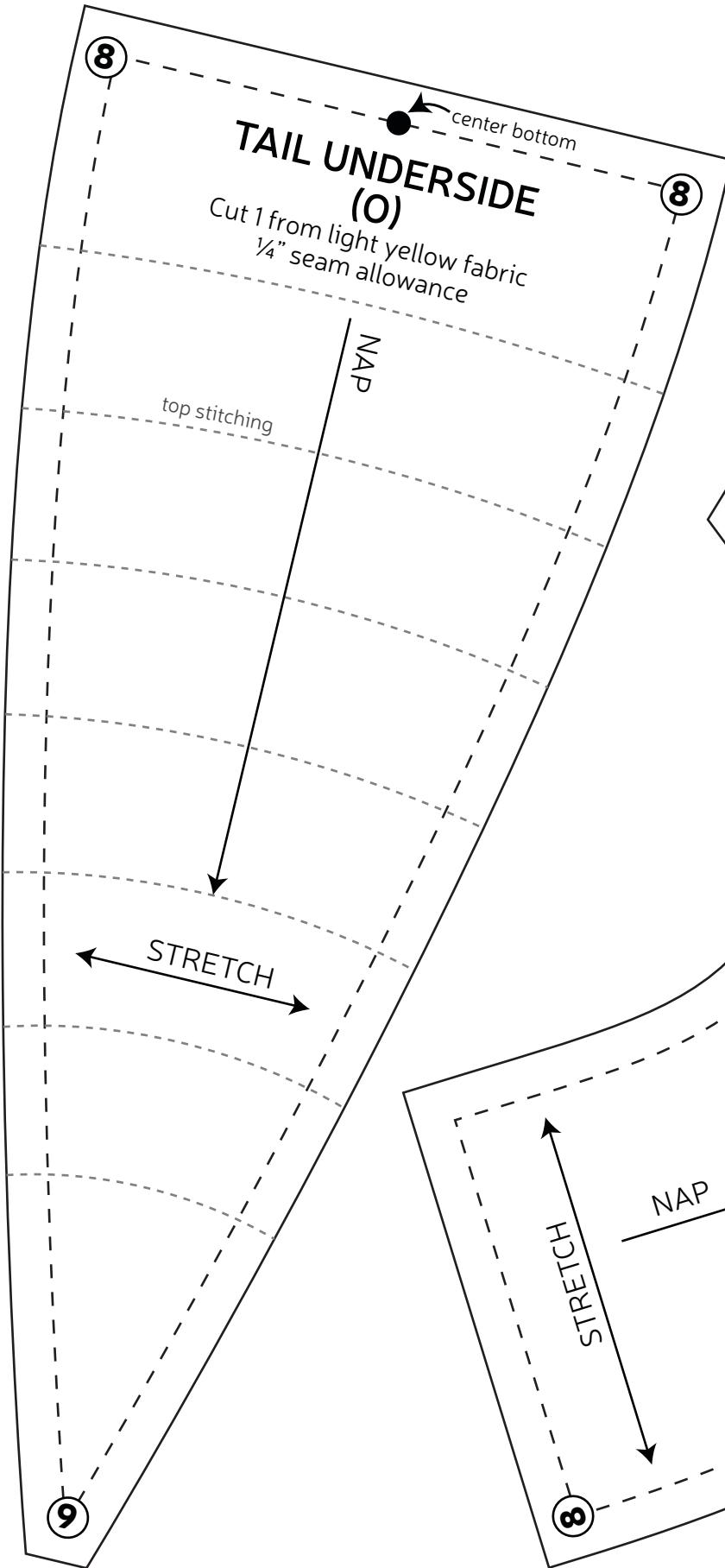
CLAW (J)

Cut 8 from white fabric
1/4" seam allowance



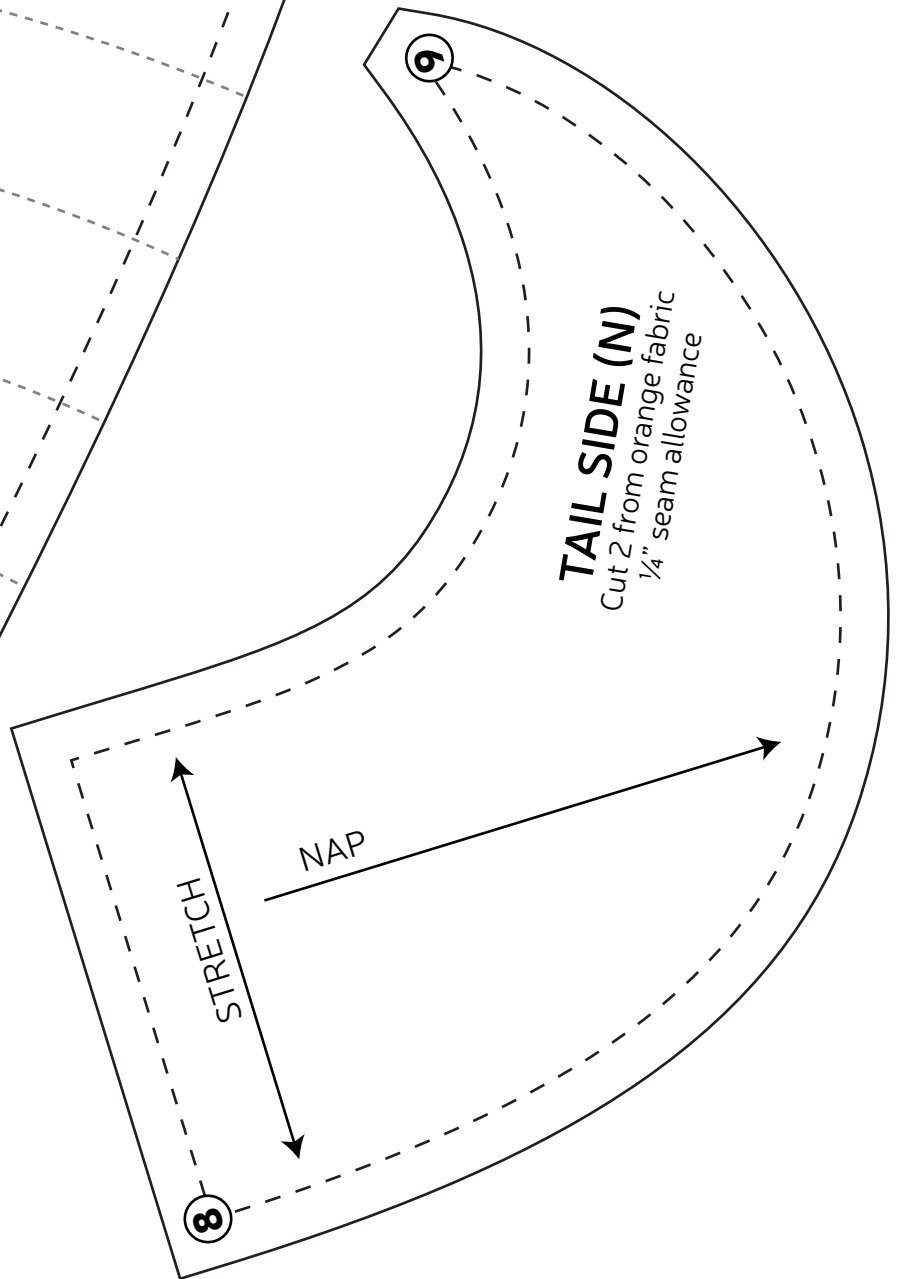
TAIL UNDERSIDE (O)

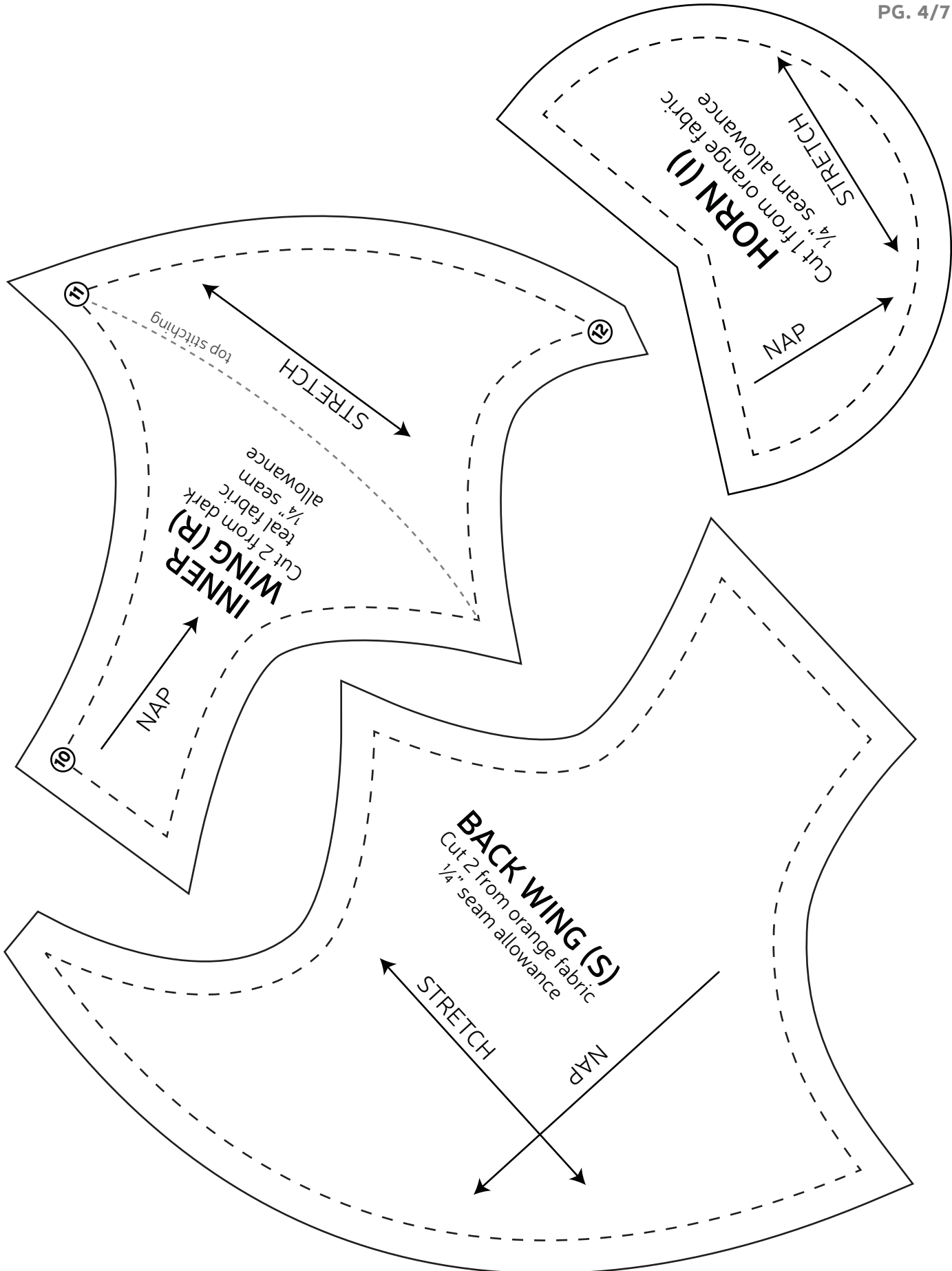
Cut 1 from light yellow fabric
1/4" seam allowance

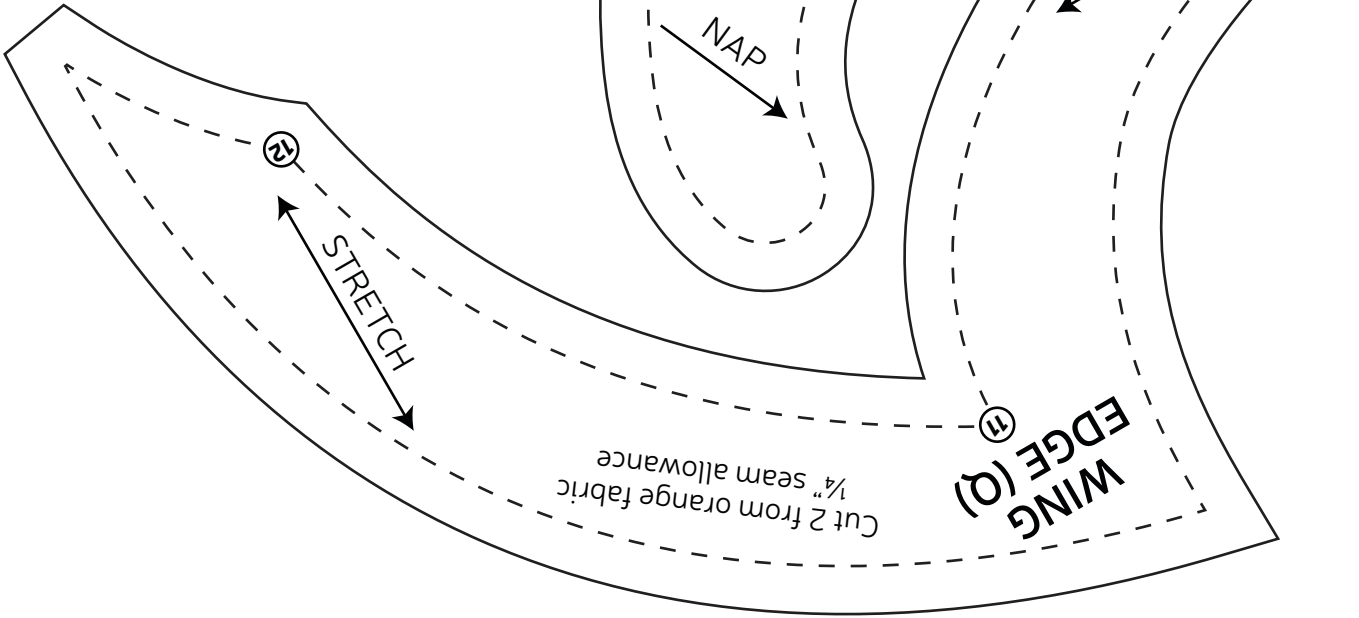
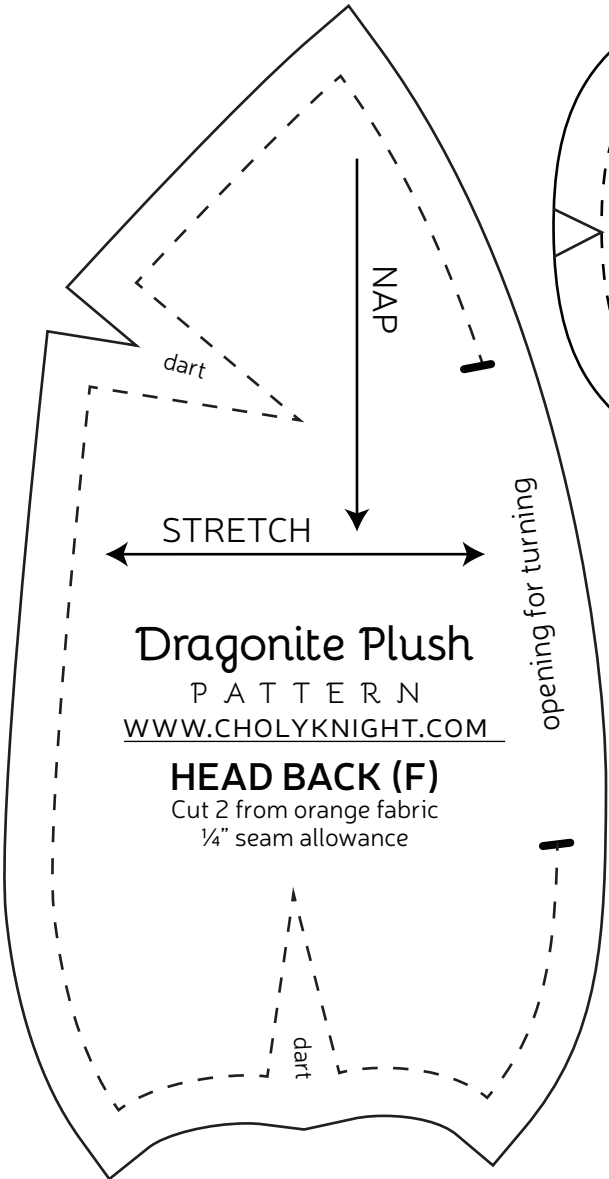
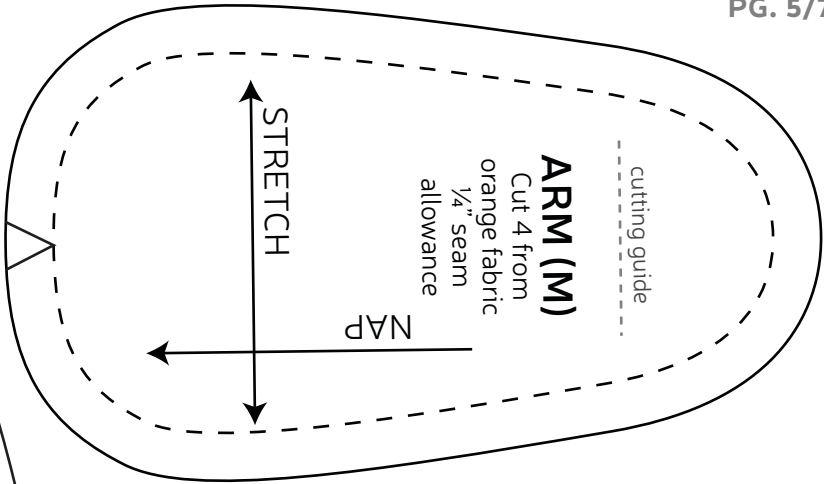


TAIL SIDE (N)

Cut 2 from orange fabric
1/4" seam allowance







**HEAD
CENTER
(B)**

Cut 1 from
orange fabric
1/4" seam
allowance

STRETCH

NAP

applique
placement

**HEAD
SIDE (A)**

STRETCH

NAP

**FOOT
BACK (L)**

Cut 2 from orange
fabric
1/4" seam allowance

NAP

STRETCH

**FOOT
BOTTOM (K)**

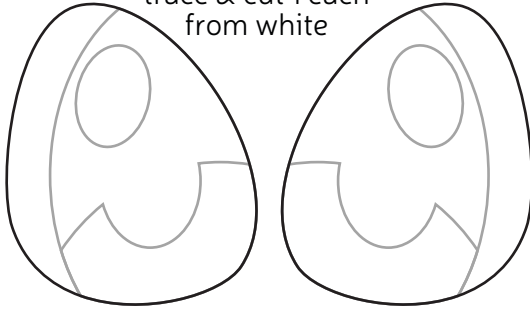
Cut 2 from orange
fabric
1/4" seam allowance

NAP

center
bottom

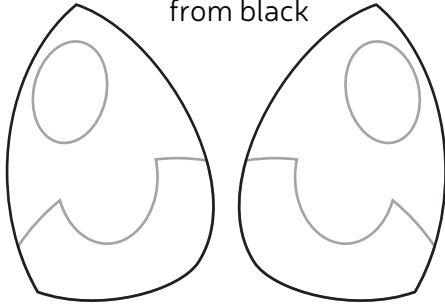
EYE WHITES

applique
trace & cut 1 each
from white



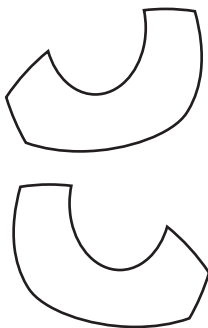
IRISES

applique
trace & cut 1 each
from black



IRIS HIGHLIGHTS

applique
trace & cut 1 each
from teal



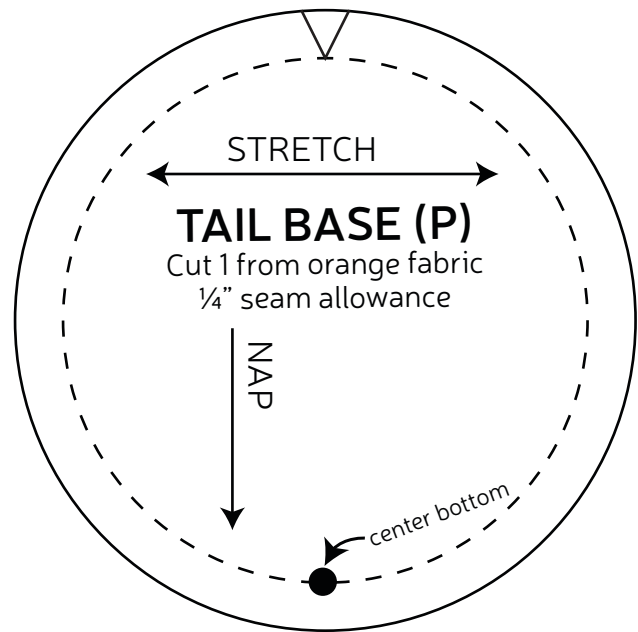
EYE SHINES

applique
trace & cut 2
from white



NOSTRILS

applique
trace & cut 1 each
from black



FOOT PAD

applique
trace & cut 2
from light
yellow

