

CHARIZARD PLUSH



a free sewing pattern by



CHARIZARD PLUSH

If you were waiting with bated breath for my Charmander pattern, then you'll be happy to see his third form, Charizard! This epic dragon-like evolution has a tall body with a long neck, tiny arms, and big feet. Its face has a small snout and menacing horns. Meanwhile it still has the same charming flame tail as the first evolution. And if you use pipe cleaners in the wings they stand up nicely on their own.

DIFFICULTY:



The most difficult part is in sewing the snout. The shapes involved are a little strange, but they help make room for the wide mouth. You'll need some patience matching up points and aligning the seams.

Also, there is a lot of hand sewing in both the arms, tail, horns, wings, and feet.

SKILLS USED:

- Fusible web applique
- Curved sewing
- Darts
- Ladder stitch
- Matching notches and points
- Gathering, gathering stitch
- Basting
- Sewing corners
- Using wire or pipe cleaners

MAKES:

About 10" tall (not including horns), 5" wide (from each side of body), and 5" long (from front of feet to back of body; not including tail).



sew desu ne?

| WWW.CHOLYKNIGHT.COM |

MATERIALS & TOOLS:

- 1/3 yd. of orange fabric for main body
- 1/4 yd. (or 10" x 6") of dark teal fabric for inner wings
- 1/3 yd. (or 7" x 10") of light yellow fabric for belly
- 1/8 yd. (or 7" x 5") of red fabric for flame tail
- 1/8 yd. (or 7" x 5") of white fabric for claws
- 3" x 3" of white applique fabric for eye whites and eye shines
- 3" x 3" of dark teal fabric for irises
- 2" x 2" of teal fabric for iris highlights
- 2" x 5" of black fabric for mouth and eyebrows
- 3" x 3" of yellow fabric for flames
- 3" x 3" of light yellow fabric for foot bottoms
- 7" x 7" of light or heavy duty fusible web
- Two 12" long pipe cleaners
- sewing thread to match main fabric and applique fabrics
- poly-fil stuffing
- basic sewing tools (sewing machine, scissors, iron, needles, pins, fabric marker, seam ripper)

FUSIBLE WEB:

- Fusible web adhesive is a sheet of adhesive with a paper backing.
Not to be confused with fusible interfacing, which is adhesive attached to a fabric/fiber backing.
- Some common brands are **Pellon** & **HeatnBond**
- In countries outside the US, it may also be known as **bondaweb**
- It comes in **light** and **heavy duty** varieties. Lightweight strength is meant for applique you intend to sew later. Heavy duty versions are for a no-sew bond. If you try to sew them later your machine might have trouble penetrating the glue.



APPLIQUE FABRICS:

- Good applique fabrics include **flannel**, **cotton**, **felt**, **minky**, and **fleece**.
- Flannel and cotton are best for detailed applique with a lot of layers because they're thinner. Meanwhile felt, minky, and fleece are better for simpler applique like body markings.
- **Flannel** is used in the example instructions (page 7).



sew desu ne?

| WWW.CHOLYKNIGHT.COM |

fabric comparison:



MINKY VS. FELT



SUGGESTED FABRICS:

MINKY OR FLEECE

Medium weight, plush fabrics with about 20%-30% stretch along the crosswise grain work best for this project. The varieties shown to the left are some good options and names to look for. Try to avoid heavyweight versions of fleece that are intended for outdoor apparel or they may cause trouble for the detailed areas.

You can also use non-stretch fabrics (such as felt), but be aware that the curves will be more difficult to sew and the result will look different. The plush will become more elongated and the edges will look sharper.

10" of minky
stretches to 13"
= 30% stretch



sew desu ne?

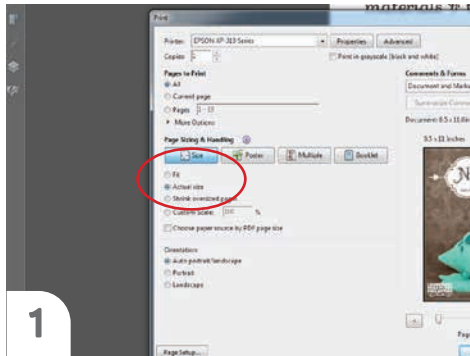
| WWW.CHOLYKNIGHT.COM |

PRINTING THE PATTERN:

Set your computer to print **PAGES 34-40**.

If you're unfamiliar with printing and assembling a .pdf pattern, read the steps to follow.

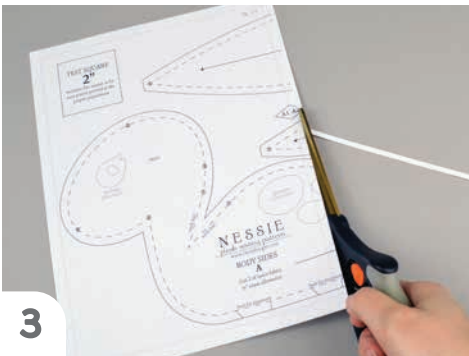
For the best results, use a .pdf reader like **ADOBE READER**. That's what is shown here and will give you the most control over the settings.



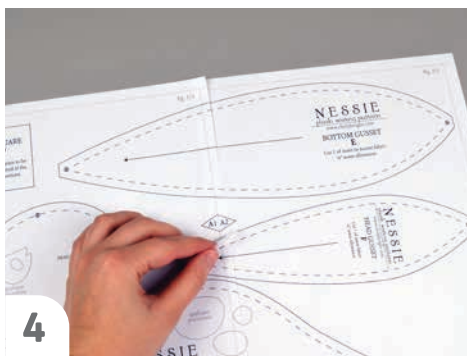
At the print dialog box, check the box that says print at "Actual Size" or 100%. Any other selection (such as "Fit to page") will distort the pattern so it's slightly larger or smaller and we don't want that.



Print the pages needed for the file. You might have one or more. Either way, be sure you have the full collection by noting the page numbers in the corner.

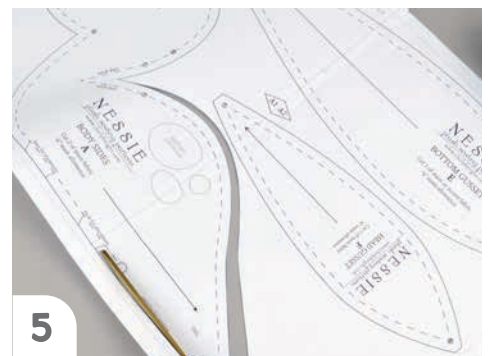


It's likely your printer will have a margin that ensures your image doesn't print to the very edge. Assembly will be easier if you trim off this blank margin edge. This will give you pages that overlap slightly during assembly. If you trim across the gray outline boxes, this will give you pages that don't overlap but rather butt against each other.



To line up the pattern pages, match up the corresponding diamond shapes. Each diamond will have a letter, so it's simply a matter of matching A1 to A2, B3 to B4 and so on. The faint gray lines indicate the border of every page, you should be able to line those up as well. When the diamond goes together, tape it in place.

If you have many pages, it's easier to tape up the pages into rows first. Then tape the rows together into a full block.

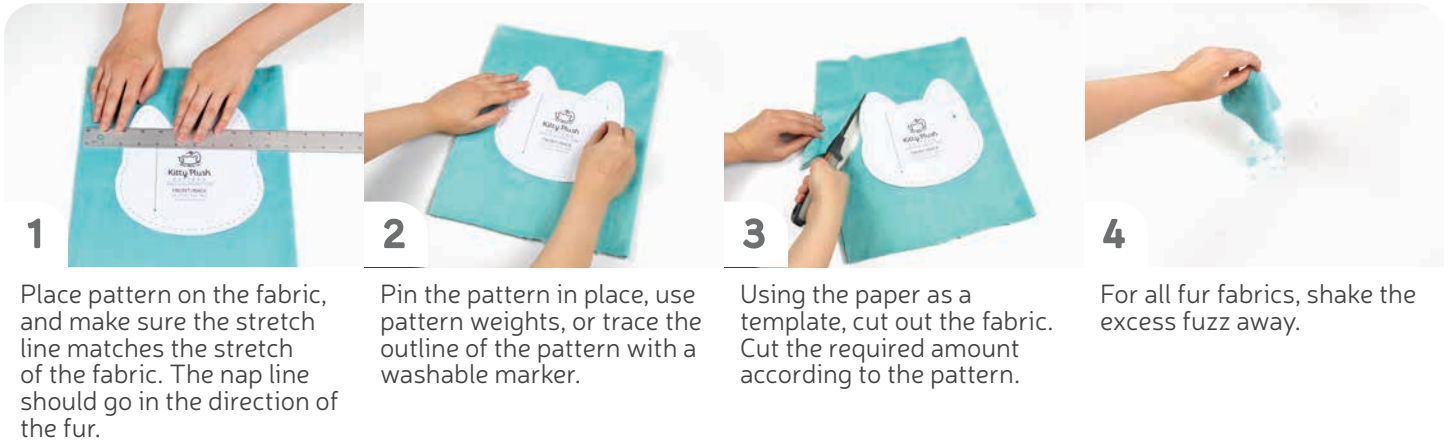


You can trace the patterns onto a different paper, or you can also just cut them straight from the printer paper -- be sure that each piece is fully taped together along the joins so they don't fall apart when you cut them.

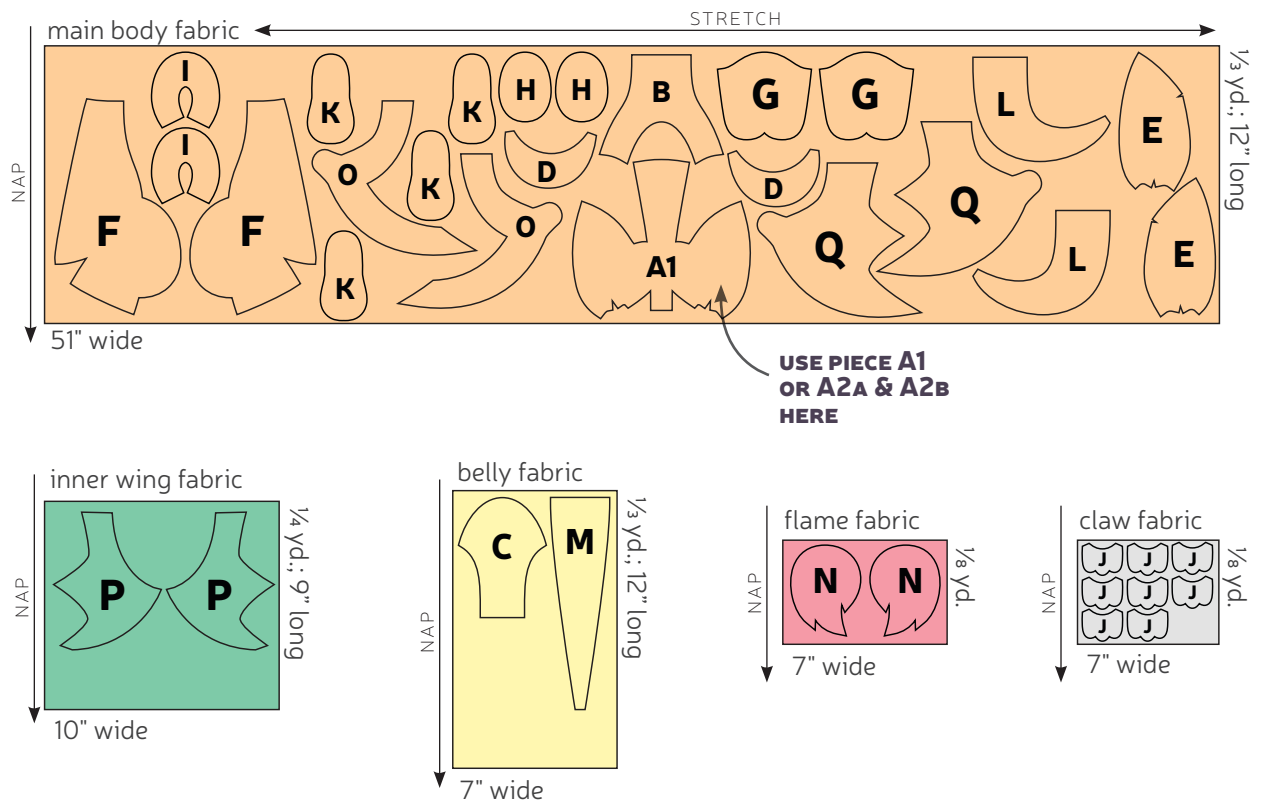
sew desu ne?

| WWW.CHOLYKNIGHT.COM |

CUTTING THE FABRIC:



CUTTING LAYOUT:



sew desu ne?

| WWW.CHOLYKNIGHT.COM |

BEFORE YOU BEGIN:

- Briefly read the project instructions so you know what to expect.
- If desired, mark the cut fabric pieces with the markings and symbols from the pattern. Or wait until the applicable step before transferring.
- Note that a ¼" seam allowance is used throughout the project, which is included in the pattern templates.



1. PREPARE THE FACE APPLIQUE

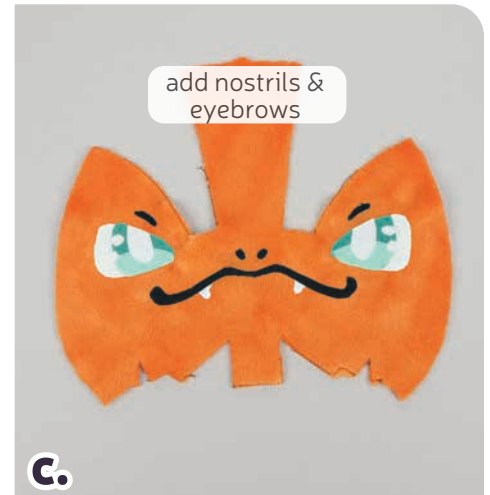
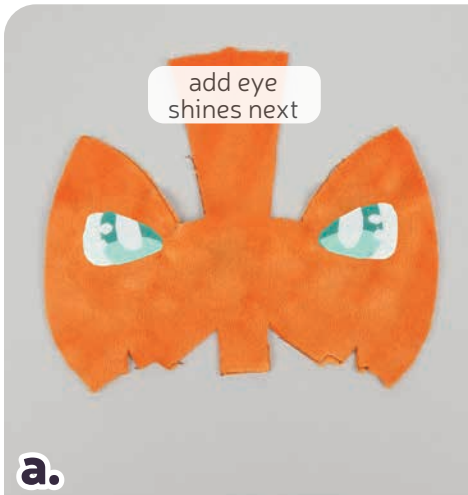
- a. Grab your fusible web and applique templates. Trace the pieces for the face. You should have:
- **eye whites** (2, white)
 - **irises** (2, dark teal)
 - **iris highlights** (2, teal)
 - **eye shines** (6, white)
 - **teeth** (2, white)
 - **mouth** (1, black)
 - **nostrils** (2, black)
 - **eyebrows** (2, black)
- b. Fuse the bumpy (adhesive) side of the fusible web onto the applique fabrics.
- c. Cut out your applique pieces and grab your **HEAD FRONT OR HEAD SIDE** piece (A1 or A2a). Grab your **eye white** piece. Set your paper pattern on top of the head front piece. Align the applique piece on top where the placement markings are. Next, carefully pull the paper pattern away while holding the applique piece in place.



- d. Fuse the applique pieces with your iron. Use a press cloth, such as a scrap piece of cotton. This will help protect any polyester or fuzzy fabrics from melting or scorching.
- e. Continue adding the next pieces; the **irises** and **iris highlights**.

sew desu ne?

| WWW.CHOLYKNIGHT.COM |



2. FINISH THE FACE APPLIQUE

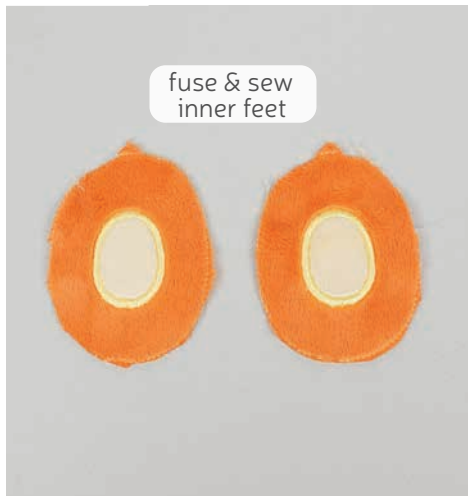
- Continue adding smaller pieces, layering them over the previous ones. Use the paper pattern and photos as a guide. Next up are the **eye shine** pieces.
- Add the **mouth** next. Then tuck the small **tooth** pieces underneath.
- Finally, add the **nostrils** and **eyebrows**.
- If you're making the 3-part face, the mouth will be split up into 3 pieces. It should look something like photo D.



3. FUSE THE FEET AND FLAME

- Take this time to also applique your **FOOT BOTTOM** center pieces (H). Use the same method as the eyes. It will need one center piece on each foot.
- Repeat the same process for the inner flames on the **FLAME** pieces (N).

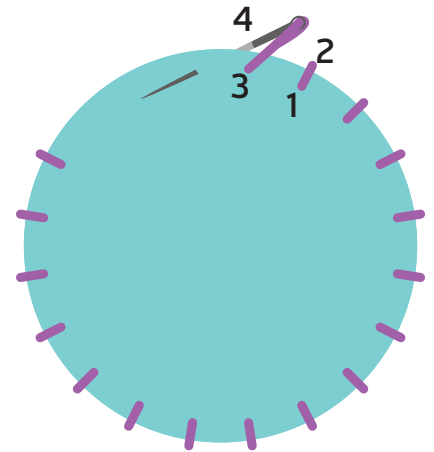
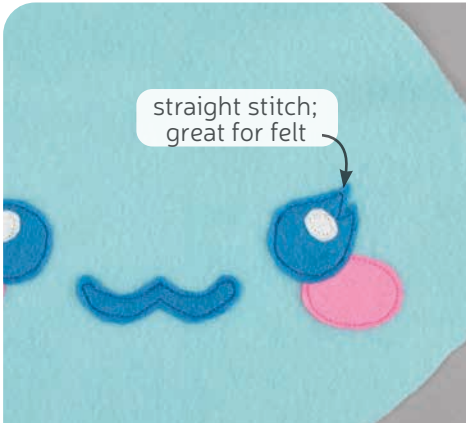
If you used heavy duty fusible web, you can keep the pieces fused without sewing, or you can sew them in place a number of ways. I've used a zigzag stitch here.



→ Refer to the next step for some other applique options.

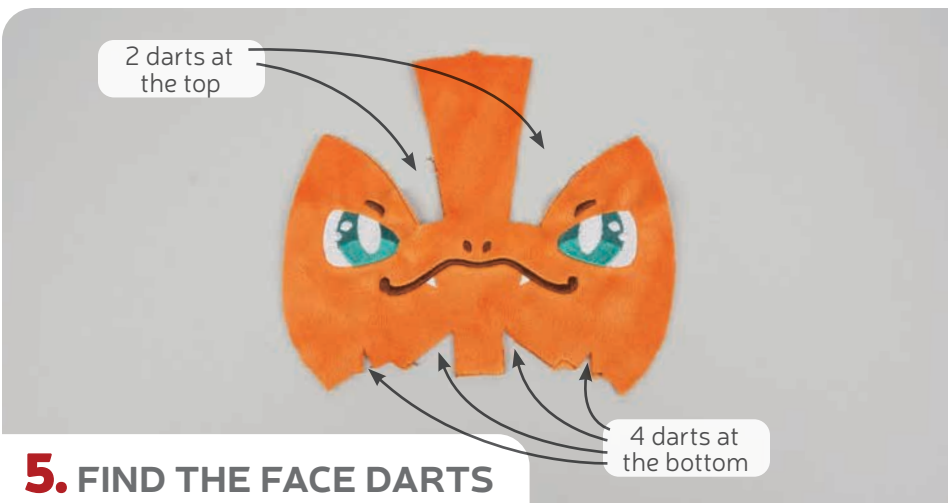
sew desu ne?

| WWW.CHOLYKNIGHT.COM |



4. OTHER APPLIQUE OPTIONS

- Other good options for applique include a straight stitch, which involves sewing around the edge of the applique pieces with a straight stitch using matching thread -- about 1/8" in from the edge.
 - You can also applique by hand; I prefer a whipstitch. Thread a hand-sewing needle with some matching thread and knot it. Bring the thread up from the back of the project; about 1/8" in from the edge of the applique shape. Bring it down perpendicular from the curve, just outside of the applique shape. This completes one stitch.
 - For the next stitch, bring the needle back up about 1/8" away from the previous stitch and 1/8" in from the edge just as in the first stitch. Once again, bring it down just outside the applique shape. Continue this way until you've sewn around the shape.
- This first section is for the **HEAD FRONT** pattern piece (A1). If you're using the split face (A2a & A2b) for 4x4 embroidery hoops or just because you prefer that assembly, those instructions start on page 12.



5. FIND THE FACE DARTS

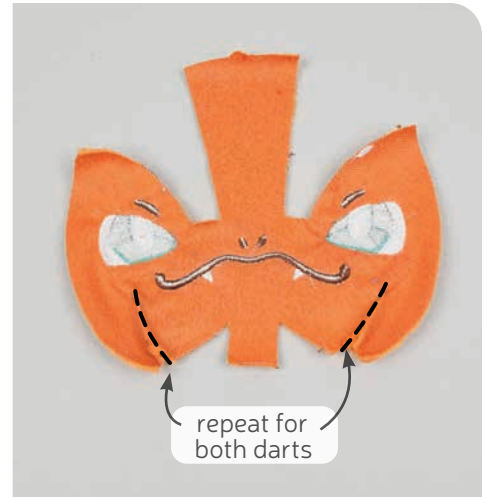
DARTS:

A wedge-shaped gap found in a pattern. When sewn in fabric, it creates a tuck in the fabric and develops a 3D shape. The diagonal sides of the wedge are the **LEGS**; these are matched up and sewn to the **POINT** of the dart.

- Grab your **HEAD FRONT** piece (A1). You'll see it has many **darts** all along the bottom neck edge and two large ones along the center top. These are the open wedge shapes found in the piece and they're also marked on the paper pattern. Along the top are the two darts that attach the forehead area. Along the bottom are two darts for the chin. And lastly there are two more darts on each side bottom.

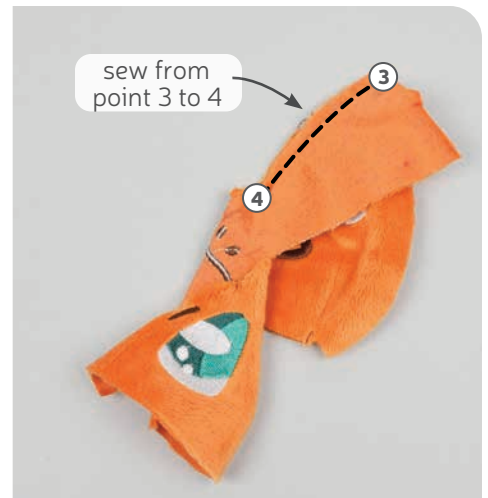
sew desu ne?

| WWW.CHOLYKNIGHT.COM |



6. SEW THE BOTTOM SIDE DARTS

- We're going to start sewing the **darts**, starting with the two easiest ones at the bottom on each side. Fold the fabric along the point of the **dart** so the slanted edges match up. Make sure right sides are facing.
- Sew from the opening of the **dart** into the fold of the fabric so it makes a smooth transition and your plush has a rounder finish.
- Repeat with the other **dart** on the other side of the head front.

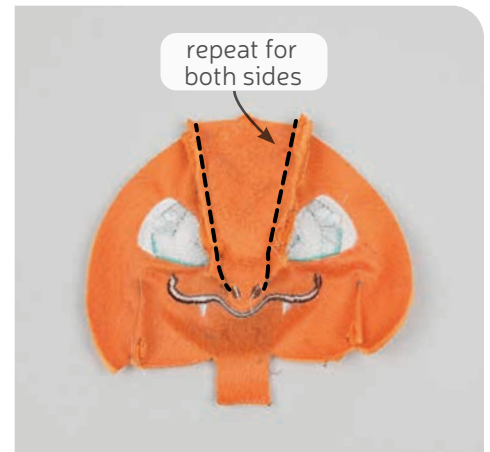
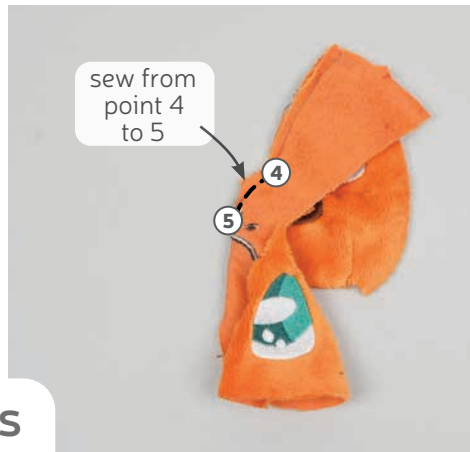


7. ALIGN THE TOP DARTS

- Next we're going to sew the top **darts**, which are the trickiest. This will join the sides of the head to the center forehead area. It will also match up **points 3 and 4** and stop at **point 5**. For the easiest time sewing them, it helps to trace the seam line from the paper pattern for more accurate stitching. Trim away the seam allowance from the paper pattern, then use it as a tracing template on the back side of the fabric to mark the **dart** seam lines.
- Fold the fabric along **point 5** and match up the edges at **points 3 and 4** so right sides are facing. It also helps to make a clip into the seam allowance at the corner of the nose. This is marked with **point 4** on the paper pattern. This will allow the fabric to stretch and bend better for the next step.
- Sew from the opening of the **dart** (at **point 3**) down through **point 4**.

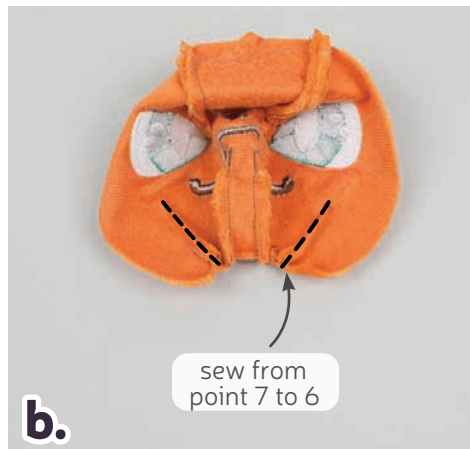
sew desu ne?

| WWW.CHOLYKNIGHT.COM |



8. SEW THE NOSE DARTS

- Next, line up the nose area, matching the fabric around the curve from **points 4 to 5**.
- Sew from **point 4 to 5**. Use the lines you traced in step 7 for extra help. Try to blend your stitching into the fold of the fabric for a smooth transition and rounder finish.
- Repeat steps 7-8 once more so you have both sides of the forehead.



9. SEW THE CHIN DARTS

- Repeat this process for the chin **darts** found at the bottom center of the **HEAD FRONT** (A1). Fold the fabric along the point of the dart so the raw edges match up. **Points 6 and 7** should also align.
- Sew from the opening of the dart at **point 7** into the fold of the fabric at **point 6**. Use the lines you traced in step 7 for extra help getting the seam accurate. Repeat this with both **darts**.
- Trim the excess seam allowance around the corner of the nose so the face turns easier.
- Turn the head front right side out and it should look something like photo D. This should have 6 **darts**: two at the forehead, two at the chin, and two on each side of the bottom.

→ Skip ahead to step 15.



sew desu ne?

| WWW.CHOLYKNIGHT.COM |

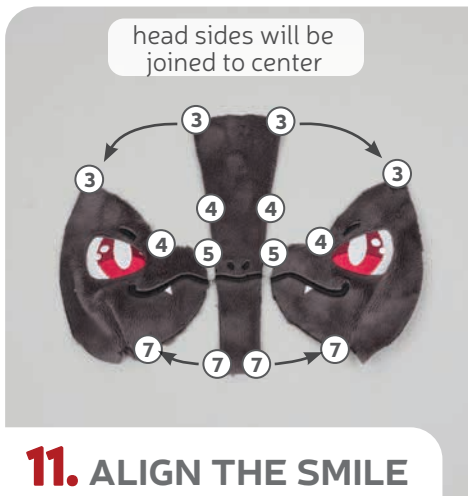
- a. Grab your **HEAD SIDE** pieces (A2a). These pieces have small **darts** along the center bottom. They're the small triangular wedges cut into the fabric. To sew them, start by folding the fabric along the point of the **dart** so the right sides of the fabric are facing. Match up the slanted lines.



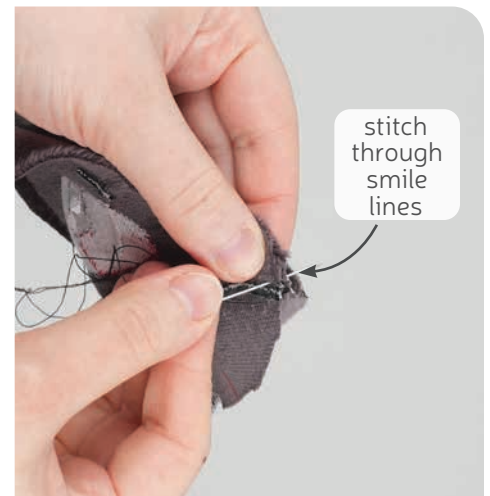
- b. Sew from the opening of the **dart** into the fold of the

10. SEW THE BOTTOM DARTS

fabric. Try to blend your stitching into the fold for a smooth transition and a rounder finish. Repeat with both head side pieces so you have one **dart** sewn for each piece.



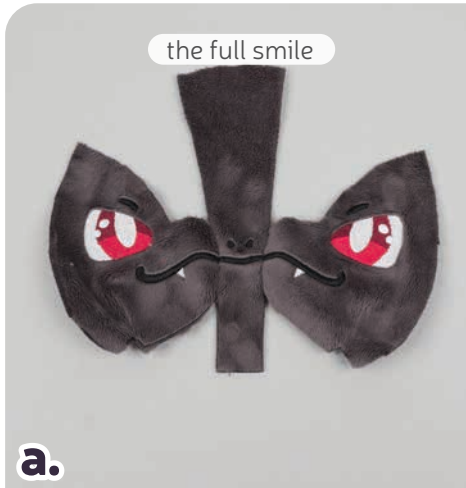
11. ALIGN THE SMILE



- a. Grab your **HEAD SIDE** (A2a) and **HEAD CENTER** (A2b) pieces. The nose curve of the head sides will be joined to the long edge of the head center. There are also numbered points for help with alignment: **points 3, 4, 5, and 7**. But first we're going to ensure that the smile lines up perfectly.
- b. Begin by lining up one of the head side pieces with the head center so the smile lines match up for about $\frac{1}{4}$ ".
- c. Grab a hand sewing needle and thread it. Stitch the smile lines together about $\frac{1}{4}$ " away from the edge. Make sure your needle is going precisely through the smile on the head side, then through the smile on the head center. When the needle is positioned exactly, then you can pull the thread through and tighten the stitch.

sew desu ne?

| WWW.CHOLYKNIGHT.COM |



12. SEW THE NOSE & FOREHEAD

- When the stitching from step 11 is done, open up the **HEAD SIDE** and **CENTER** pieces (A2a & A2b) to ensure that the smile lines match up.
Once complete, repeat with the other head side piece and the other side of the head center. These should join together to make the complete smile.
In the next steps we're going to join the head sides to the center and we can be sure that the smile will stay put and stay aligned.
- Align the head center to the head side, bending the fabric around the curve the nose. Match up **points 5 and 4**.
- Sew the head center to the side around the nose. This starts at the mouth, goes through **point 5** and ends at **point 4**.



- Next, align the top end of the forehead to the head side. This should align **point 3** at the upper corner. Make sure right sides are facing and pin the fabrics together.
- Sew from **point 4** up to **point 3** to attach the forehead area.
- Open up the pieces and they should look something like photo F.

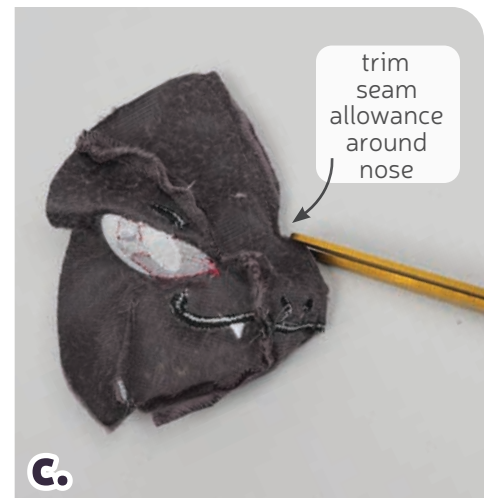
sew desu ne?

| WWW.CHOLYKNIGHT.COM |

- a. Grab your **HEAD CENTER** piece (A2b) and align it with your other head side piece.
- b. Repeat step 12 once more on the other side of the head center. This should attach both sides.

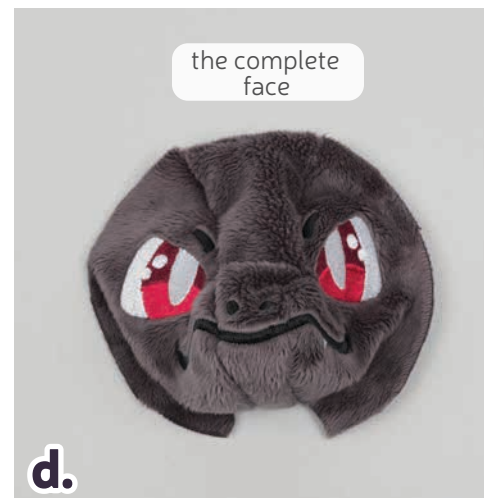


13. SEW THE OTHER FOREHEAD SIDE



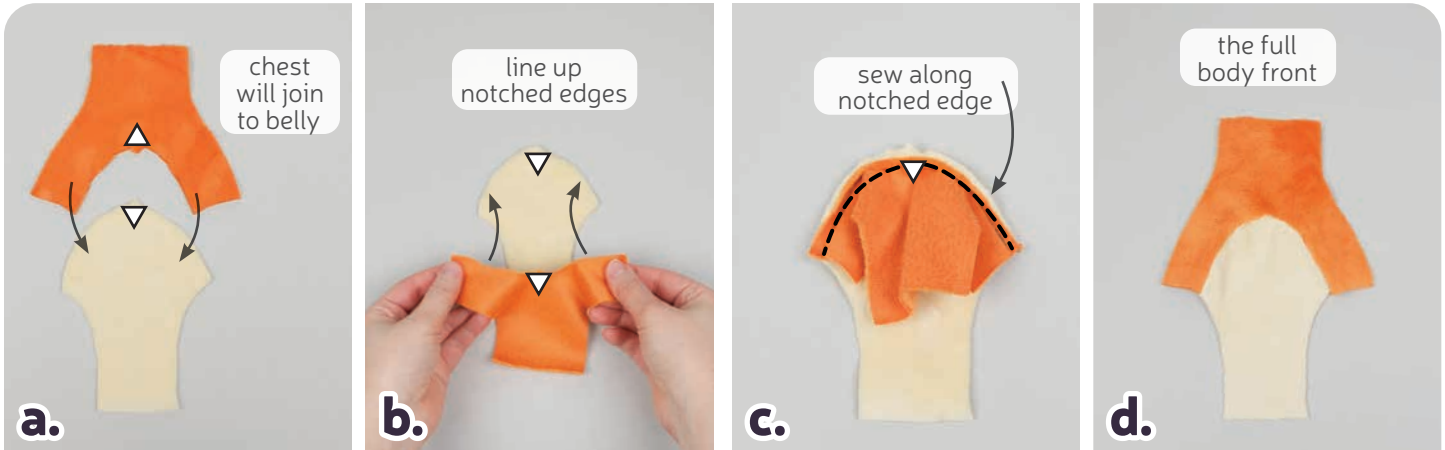
14. SEW THE CHIN

- a. Grab the bottom end of your **HEAD CENTER** piece (A2b). Next we're going to align it with the bottom edges of the head side. This should line up **point 7** at the bottom corners. Make sure right sides are facing and pin the fabrics together.
- b. Sew the head center to the head side from the mouth down to **point 7** at the bottom corner. Repeat on the other side. This should completely attach the head center piece.
- c. Trim the excess seam allowance around the corner of the nose to reduce bulk and increase flexibility when the piece is turned.
- d. Turn the head front right side out and it should look something like photo D.



sew desu ne?

| WWW.CHOLYKNIGHT.COM |



15. ATTACH THE BELLY

- Grab your **CHEST** (B) and **BELLY** (C) pieces. We're going to attach these pieces so they make one full body front piece. They're marked with **single notches** along the edges for easy identification.
- Bend and stretch the inner curve of the chest that has the **notch marking** so it matches up with the **notch** on the belly. Pin the fabrics together.
- Sew the chest to the belly along the **notched edge**.
- Open up the pieces when complete.

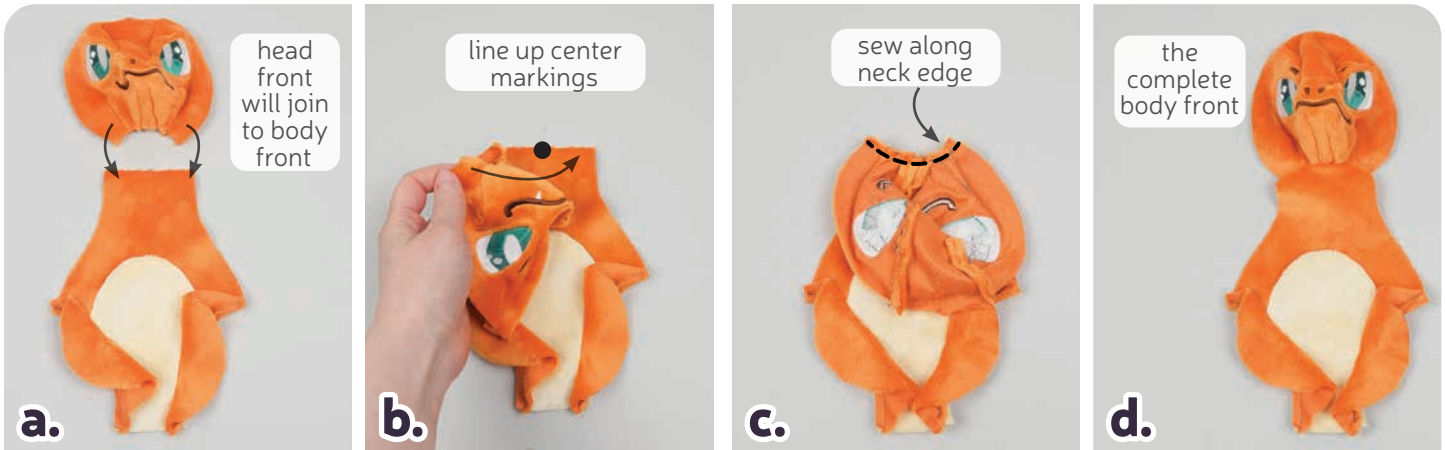


16. ATTACH THE INNER LEGS

- Grab your **INNER LEG** pieces (D). The inner legs should match up with the body front along the inner curves. The notch on the inner leg should align with the belly seam. There are also numbered points for help with alignment, **points 1 and 2**.
- Align the inner leg with the belly front from **points 1 to 2**. Make sure right sides are facing and pin the fabrics together.
- Sew the inner leg to the body front along the inner curve from **points 1 to 2**. Repeat with the other inner leg piece so both are joined.

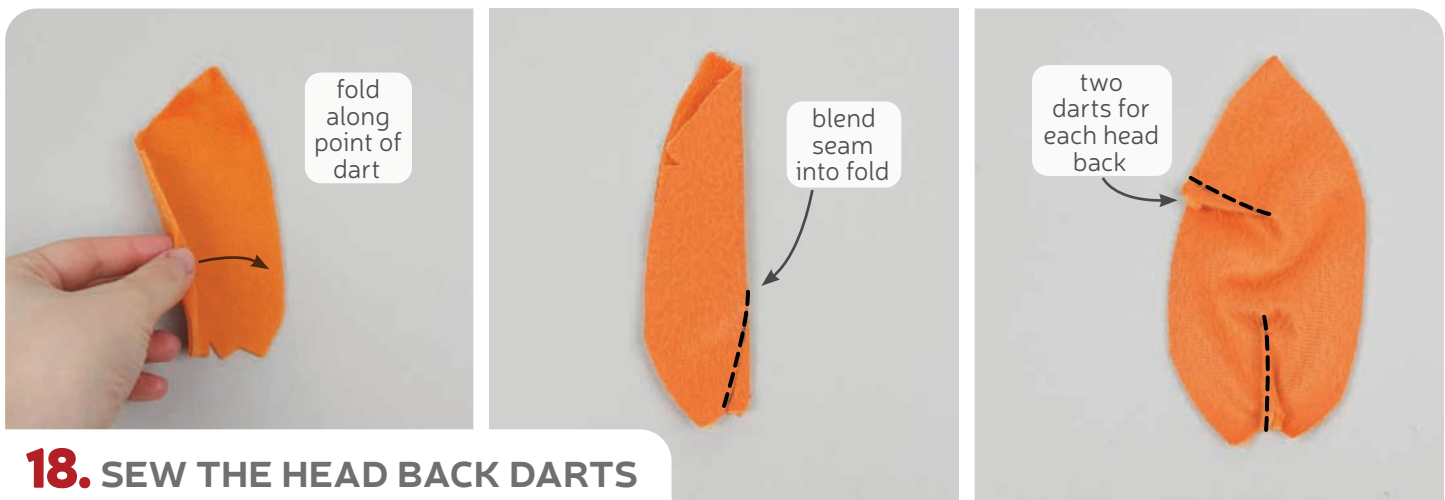
sew desu ne?

| WWW.CHOLYKNIGHT.COM |



17. SEW THE FRONT NECK

- Grab your **HEAD FRONT** piece from before and your **BODY FRONT**. The **neck edges** of both of these pieces will be joined next.
The neck edges are marked with **circle markings** in the center for easy alignment.
- Layer the head front over the body front, matching up the raw edges and **circle marking** at the center. Pin the fabrics together.
- Sew the head front to the body front along this **neck edge**.
- Open up the pieces when complete.
→ Set your body front aside for a while as we construct the back.

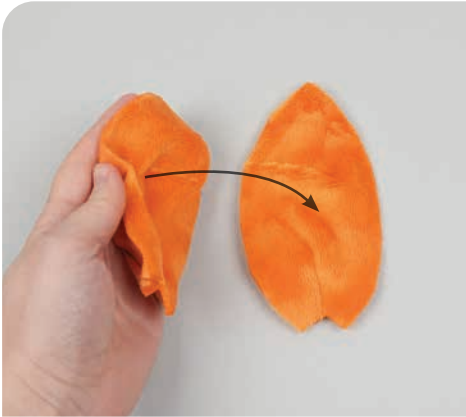


18. SEW THE HEAD BACK DARTS

- Grab your **HEAD BACK** pieces (E). These pieces also have several **darts** like the head front. Sew them the same way, starting by folding the fabric along the point of the **dart**. This should match up the slanted edges.
- Sew from the opening of the dart into the fold of the fabric.
- Repeat for both the bottom neck **dart** and the upper corner **dart**. Repeat this for both head side pieces so you have two total.

sew desu ne?

| WWW.CHOLYKNIGHT.COM |

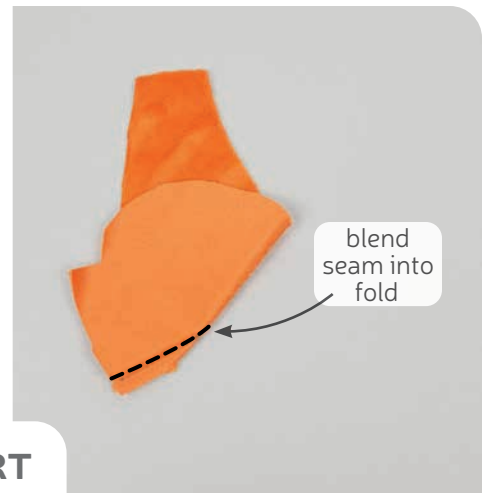
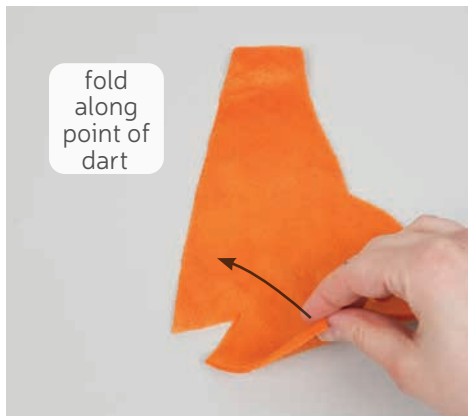


19. SEW THE HEAD BACK

- Take both of your **HEAD BACK** pieces (E) and align them with right sides facing and the raw edges matching up.
- If you haven't already, locate the **opening for turning markings** found on the paper pattern for the head back. Transfer them over to the wrong side of the fabric. Sew the head back pieces together along this edge only, but leave the opening that you marked. Open up the pieces when complete.

→ *Set aside your head back for a little while as we work on the body back.*

- Grab your **BODY BACK** pieces (F). This piece also has a **dart**, found in the bottom corner. Sew it similar to the others, starting by folding it along the point of the dart and matching the slanted lines.
- Sew starting at the opening and work toward the point. Try to blend your stitching into the fold of the fabric. This will create a rounder finish for your plush. Repeat with your remaining body back piece for two total.

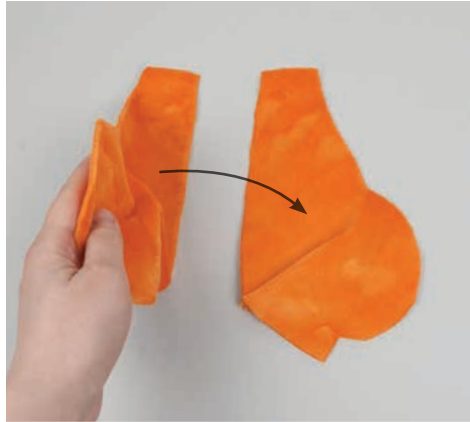


20. SEW THE BACK DART

sew desu ne?

| WWW.CHOLYKNIGHT.COM |

- a. Take your two **BODY BACK** (F) pieces and align them with right sides facing and the raw edges matching up.
- b. Sew them together along the edge with the **dart** from the previous step. Open up the pieces when complete.



21. SEW THE CENTER BACK



22. SEW THE BACK NECK

- a. Grab your **HEAD BACK** pieces from before (E) and your **BODY BACK** (F). The **neck edges** of both of these pieces will be joined next.
- b. Layer the head back over the body back, matching up the raw edges and the **center seams**. Pin the fabrics together.
- c. Sew the head back to the body back along this **neck edge**.
- d. Open up the pieces when complete.

sew desu ne?

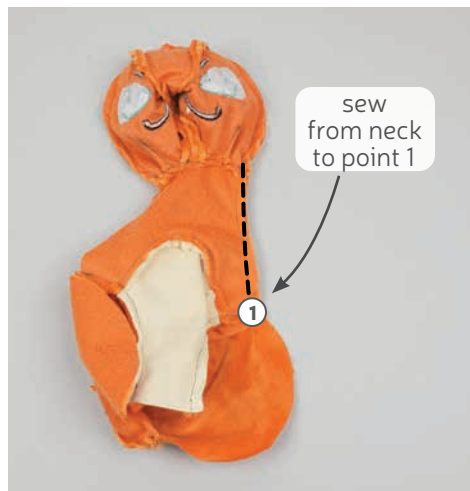
| WWW.CHOLYKNIGHT.COM |

23. SEW THE HEAD FRONT TO THE BACK

- a.** Grab both of your front and back pieces so far. Align them with right sides facing. We're going to sew around the entire body. Experts should be able to handle this all in one go, but we're going to break it down into several parts for beginners. Start by aligning the head pieces. Match up the **center top notch** with the **head back seam**. The neck seams (from steps 17 and 22) should also match up.
- b.** Sew the head front to the back all the way around, starting at one side of the neck and going to the other.



24. SEW THE SIDE

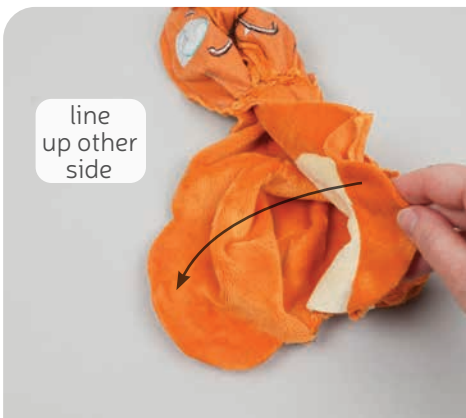
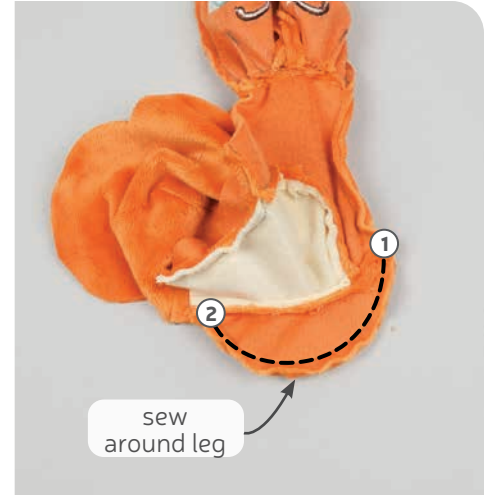


- a.** Next, line up the **BODY** pieces. This is the edge starting at the neck and going down to **point 1**. Make sure right sides are facing and pin the fabrics together.
- b.** Sew the body side, starting at the neck seam and going down to **point 1**.

sew desu ne?

| WWW.CHOLYKNIGHT.COM |

- a. Next pin the **INNER LEG** (D) to the outer curve of the **BODY BACK** (F). It starts at **point 1** and goes around to **point 2**. Make sure right sides are facing and pin the fabrics together.
- b. Sew around the leg, from **point 1 to point 2**.



- a. At the edge between the legs, the **center circle marking** on the **BELLY** (C) will match up with the **back seam** (from step 21).
- b. Pin and sew between the legs, from one **point 2** to the other. Lastly, finish up the other side by repeating steps 25 and 24 in the other direction. Sew from **point 2 to 1**, then up the side, ending at the **neck seam**. This should take you all the way around the body.

26. COMPLETE THE BODY

sew desu ne?

| WWW.CHOLYKNIGHT.COM |



27. TURN & STUFF THE BODY

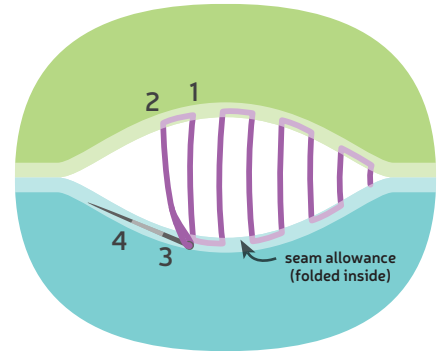
- a. Before turning the body right side out, clip the seam allowances at the corners. This will help it turn more cleanly. This is particularly important at the **neck seam** and **points 1 and 2**.
- b. Turn the body right side out through the opening in the back of the head.
- c. Begin by stuffing the body with stuffing about halfway. Then start filling up the legs firmly. Having stuffing already in the body will help keep the leg stuffing in place.



- d. Fill up the rest of the body, and sneak extra bits of stuffing into the legs if necessary. Keep filling the body until it's firm before moving onto the head.
- e. Start stuffing the head. Begin by filling up the sides of the head halfway (just like with the body in part C).
Next, fill up the nose. If there's already some stuffing in the head, this will help keep it in place. Stuff it enough so there are no wrinkles in the fabric near the seams and darts.
- f. Fill up the rest of the head until it's completely firm. If possible, sneak extra bits of stuffing into the neck. Since this plush has a long neck, extra stuffing will help keep it from wobbling.

sew desu ne?

| WWW.CHOLYKNIGHT.COM |



28. CLOSE UP THE HEAD

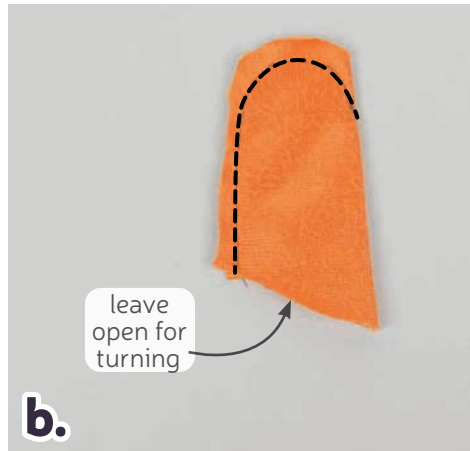
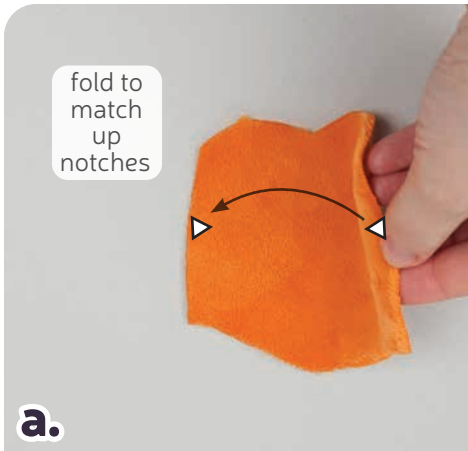
- a.** Once the plush is stuffed, make sure the seam allowances in the opening are tucked inside and prepare to ladder stitch it closed. Thread a hand-sewing needle and knot it at the end. Insert the needle from the inside of the opening and out of the plush near one edge of the opening. This will leave the knot inside the plush.
- b.** Continue from here doing a ladder stitch. Take a 1/8" stitch into the fold of one side of the opening, then go across and take another. Keep going down the opening until you reach the end.



- c.** When you're finished, stitch a knot into the end of the seam. Then insert the needle near the finished knot.
- d.** Bring the needle out about 1-2" away and pull it through.
- e.** Pull the thread taut while snipping the thread. The excess thread should sink back inside the plush -- all hidden!

sew desu ne?

| WWW.CHOLYKNIGHT.COM |



29. SEW & ATTACH THE HORNS

- a.** Grab your **HORN** pieces (G). Take one and fold it in half so the sides match up. These are the edges marked with **notches** on the paper pattern for help with identification.
- b.** Sew from the bottom corner of the horn around the top curve and into the fold. Try to blend your stitching into the fold for a smooth transition and a rounder finish.
- c.** Stuff the horn semi-firmly with stuffing.

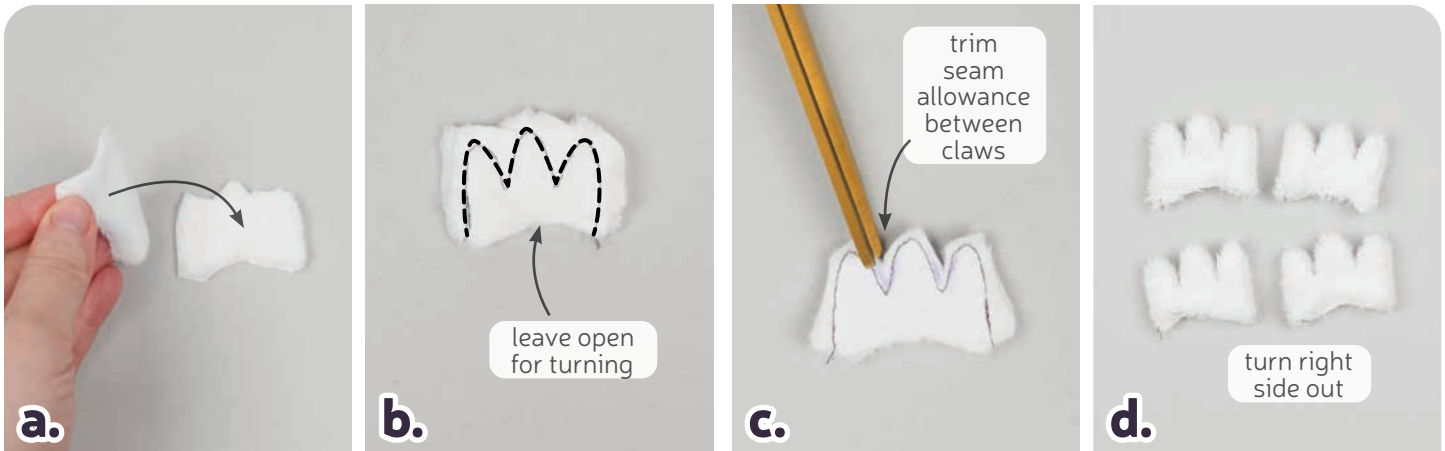


- d.** Sew a gathering stitch around the opening of the horn, about ¼" away from the opening.
- e.** Pull at the gathering thread to cinch the horn closed. Sew a few knots into the center to hold it closed.
- f.** Align the horn onto the head of your plush. In the sample, it's placed behind the head seam, between the **forehead seam** on the front and the **upper corner dart** on the back. The paper pattern also has a **placement guide** for help.
- g.** Make sure the horns are pointing backward and ladder stitch them in place around the base. Repeat for both horns.



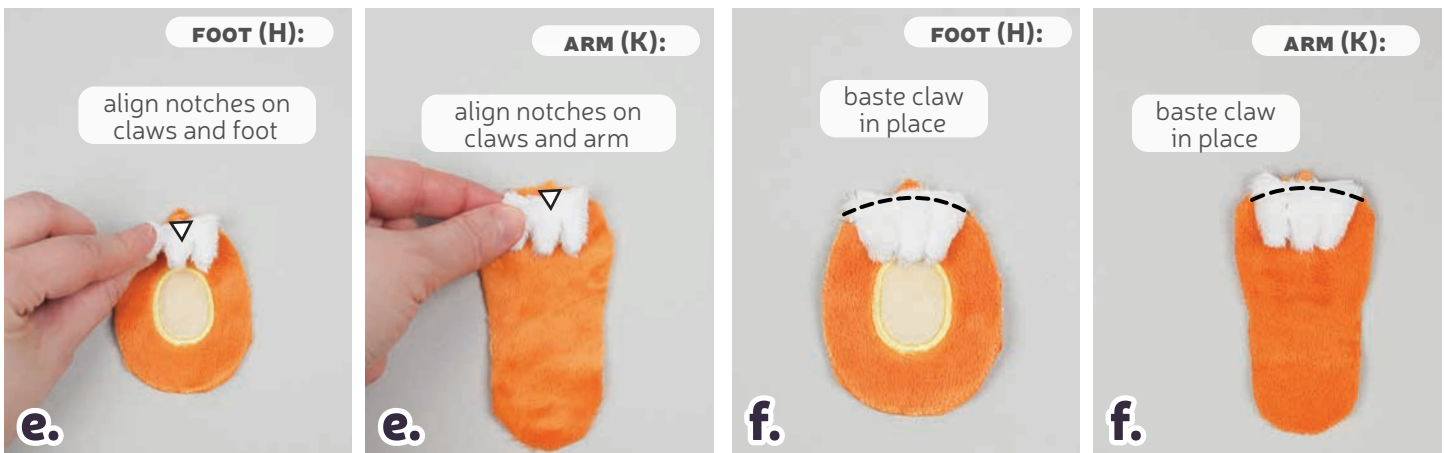
sew desu ne?

| WWW.CHOLYKNIGHT.COM |



30. SEW & BASTE THE CLAWS

- Grab your **CLAW** pieces (J). Take two of them and align them with right sides facing and the raw edges matching up.
- Sew the pieces together around the pointed edge. Leave the slightly curved edge free for turning the piece right side out. This edge also has a **notch marking** for easy identification.
- Trim the excess seam allowance between the claws to reduce bulk and increase flexibility when the piece is turned.
- Turn the claws right side out through the opening. Define the points with a chopstick or similar turning tool.

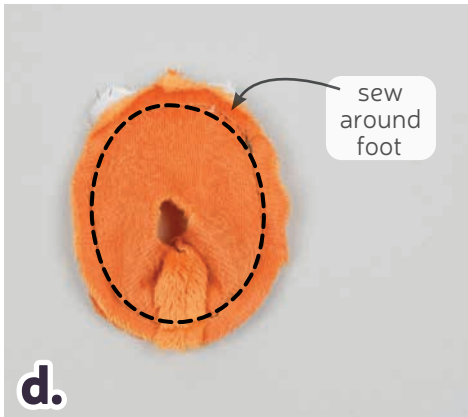
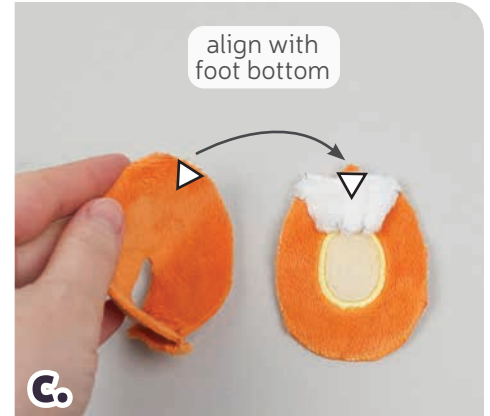
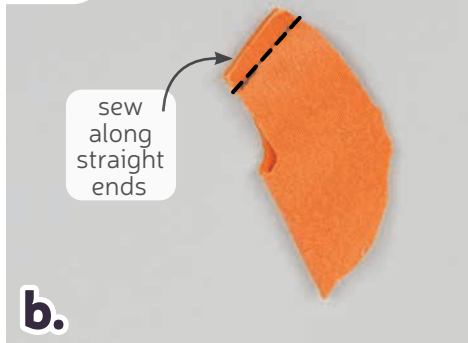


- Grab your **FOOT BOTTOM** (H) and **ARM** pieces (K). These pieces will have claws basted to them. They have **notch markings** as well to help align them to the claws. Align one of your claw pieces to the foot bottom so the **notches** match up and the raw edges are aligned. Repeat this with one of your arm pieces.
- Baste the claw to the foot bottom within the seam allowance to hold it in place for future steps. Repeat this with your arm piece. Now repeat parts E and F once more so you have claws for both feet (2 total) and both arms (2 total). This should use up all 4 claws.

sew desu ne?

| WWW.CHOLYKNIGHT.COM |

31. SEW & ATTACH THE FEET



- Grab your **FOOT BACK** pieces (I). Fold it in half with right sides facing so the short straight edges match up.
- Sew the foot along the short straight edge. This should leave a hole in the middle.
- Take this piece and align it with your **FOOT BOTTOM** (H) so right sides are facing and the **notches** along the top match up.
- Sew the foot back to the bottom all the way around. Be sure that the claws are tucked inside and this should catch them in the seam.

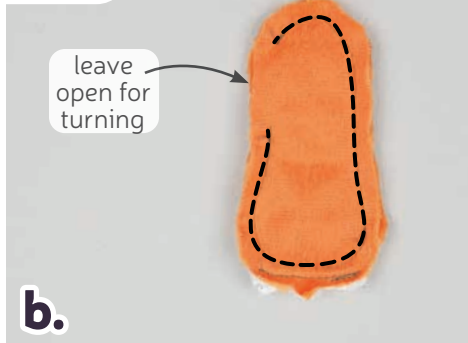


- Turn the foot right side out through the opening in the foot back.
- Stuff the foot semi-firmly with stuffing.
- Align the foot onto the leg of your plush. The side with the hole should face the plush and the toe claws should be pointing up.
- Ladder stitch the foot to the leg around the opening that you left. Repeat for both feet.

sew desu ne?

| WWW.CHOLYKNIGHT.COM |

32. SEW & ATTACH THE ARMS



a. Grab your **ARM** pieces (K). Take one arm with a **CLAW** basted (J) and one blank arm. Align them with right sides facing and the raw edges matching up.

b. Sew around the outside edge of the arm, but leave an **opening for turning** in the side as the paper pattern has marked. The claws should be secured inside the seam.

c. Turn the arm right side out through the opening in the side.

d. Stuff the arm semi-firmly with stuffing through the opening.

e. Ladder stitch the opening in the arm closed.



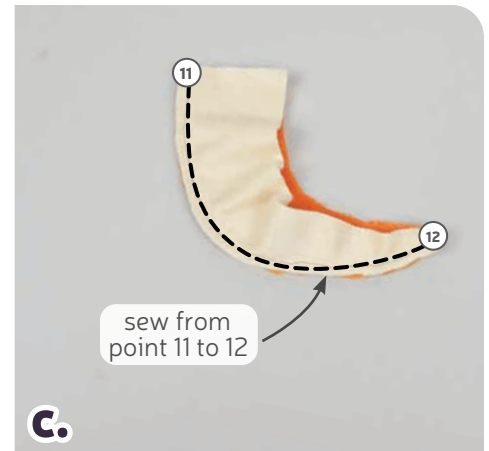
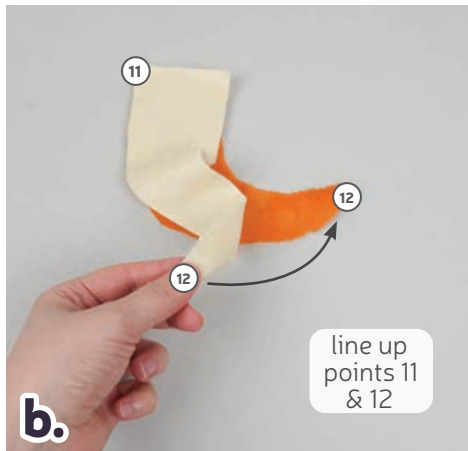
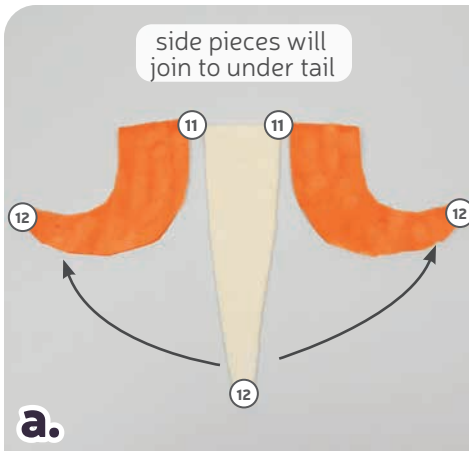
f. Take your arm and align it onto the body of your plush. Here it's placed about 1" up from **point 1** on the leg, slightly overlapping the side seam. There's also a **placement guide** on the paper pattern for help.

g. Ladder stitch the arm to the body, sewing near the arm seam when attaching the shoulder.

h. For the underside of the arm, you'll have to flip it up and sew beneath the arm. Repeat for both arms.

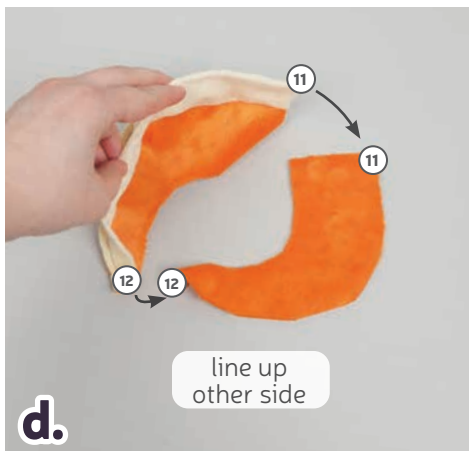
sew desu ne?

| WWW.CHOLYKNIGHT.COM |



33. SEW THE TAIL

- Grab your **TAIL** pieces (L & M). We're going to sew the long **UNDER TAIL** piece around the curves of the **TAIL SIDES**. The edges that come together next are marked with **points 11 and 12** for easy identification and to help ensure the pieces don't get flipped.
- Line up the under tail with one of the side pieces so right sides are facing and **points 11 and 12** match up. Pin the fabrics together.
- Sew the under tail to the side from **point 11 to 12**.



- Grab your other side piece. We're going to join it to the other side of the under tail piece. Line up **points 11 and 12** as before. The three pieces will come together at the point of the tail.
- Sew the side to the under tail from **point 11 to 12**. When complete, both sides of the under tail should be sewn.
- Lastly, line up the two tail side pieces. Pin the fabrics together.
- Sew from the base of the tail down to **point 12**. All of your seams from before will converge at the tip here.



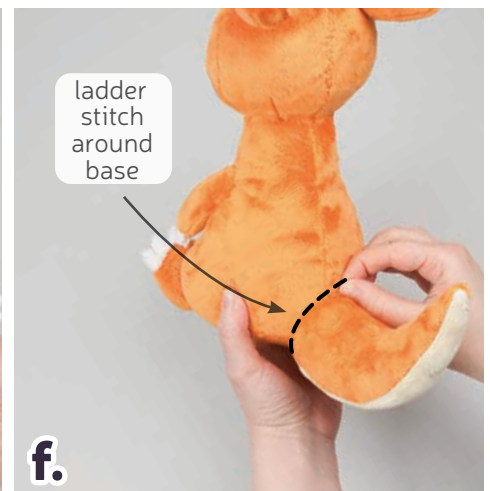
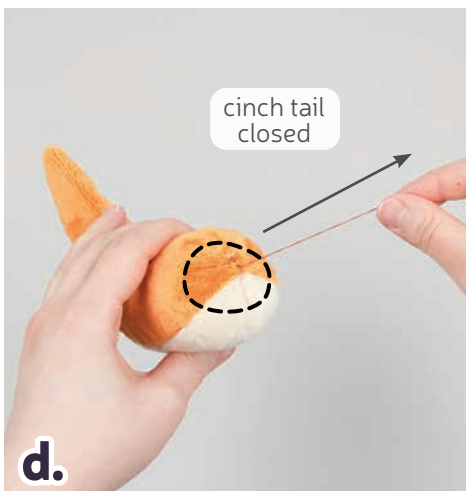
sew desu ne?

| WWW.CHOLYKNIGHT.COM |



34. ATTACH THE TAIL

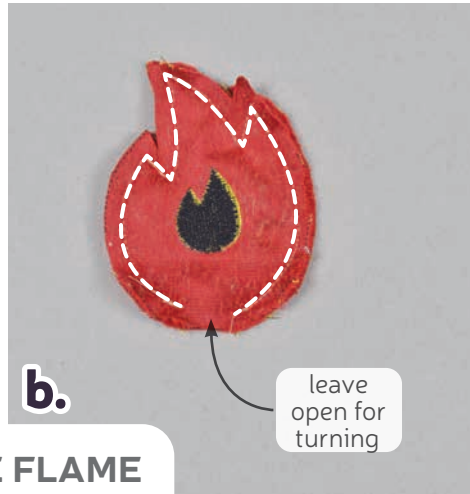
- a.** Trim the excess seam allowance at the tip of the **TAIL** to reduce bulk.
- b.** Turn the tail right side out through the opening in the base.
- c.** Stuff the tail semi-firmly with stuffing so it takes shape. Be sure to get small bits in the tip of the tail so it doesn't deflate and look empty.



- d.** Grab a hand sewing needle and thread it. Sew a gathering stitch around the edge of the tail, similar to the horn from before.
Pull at the thread to cinch the tail closed. Sew a few knots into the center of the tail to hold it closed.
- e.** Take your tail and align it onto the back of your plush so the cinched end is above the back **darts**. Make sure the tip of the tail is pointing up.
- f.** Ladder stitch the tail to the plush around the base.

sew desu ne?

| WWW.CHOLYKNIGHT.COM |



35. SEW & ATTACH THE FLAME

- Grab your **FLAME** pieces (N). Align them with right sides facing and the raw edges matching up.
- If you haven't already, note the **opening for turning marking** on the paper pattern for the flame. Sew around the entire flame piece, but leave an opening in the bottom as indicated.
- Trim the excess seam allowance around the tips of the flame piece to reduce bulk and increase flexibility when the piece is turned next.

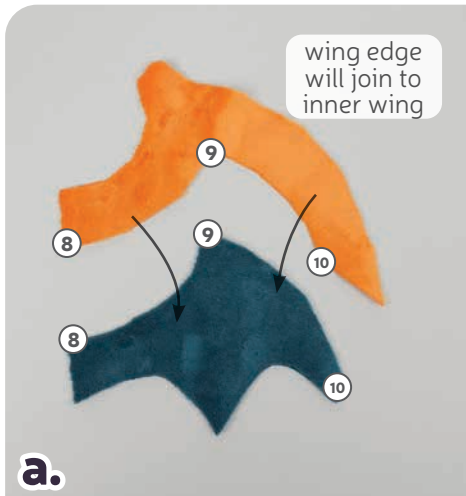


- Turn the **FLAME** right side out through the opening and define the points with a chopstick or similar turning tool.
- Stuff the flame lightly, just enough so it puffs up and takes shape.
- Align the opening of the **FLAME** onto the tip of the **TAIL**.
- Using a hand sewing needle, sew around the flame opening to attach it to the tail. Sew all the way around to secure it in place.



sew desu ne?

| WWW.CHOLYKNIGHT.COM |



36. SEW THE INNER WINGS

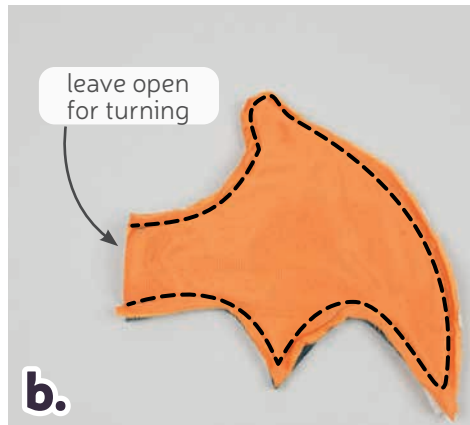
- Grab your **WING EDGE** and **INNER WING** pieces (O & P). We're going to attach them along the inner edge, but there are also **numbered points** for help with alignment, **points 8, 9, and 10**. We're going to sew one section at a time to make it easier.
- Start by aligning your inner wing piece with the wing edge, matching up **points 8 and 9**. Make sure right sides are facing and pin the fabrics together.
- Sew the inner wing to the wing edge from **point 8 to 9**. This is easier to do with the inner wing fabric on top.



- Take your wing edge fabric and clip into the corner at **point 9**. This will allow the fabric to bend around the corner easier.
- Take the other side of your wing edge fabric and align it with the inner wing so right sides are facing and **point 10** matches up at the end. Make sure right sides are facing and pin the fabrics together.
- Sew the wing edge to the inner wing from **point 9 to 10**. This is easier to do with the wing edge fabric on top.
Repeat this step with your remaining inner wing and wing edge pieces so you have two wings.

sew desu ne?

| WWW.CHOLYKNIGHT.COM |



37. SEW & TOP STITCH THE WINGS

- Grab your **BACK WING** pieces (Q). Align it with one of the front wing pieces you've sewn in the previous step. Make sure right sides are facing and the raw edges match up.
- Sew the pieces together all around the pointed edges. Leave the short straight edge open for turning the piece right side out later.
- Trim the excess seam allowance around the tight corners and curves. This will reduce bulk and increase flexibility when the piece is turned later.



- Turn the piece right side out through the opening you left. Define the points with a chopstick or similar turning tool.
- Tuck in the seam allowances in the opening of the wing by $\frac{1}{4}$ ". This should make the opening of the wing folded.
- Top stitch along the front of the wing. First stitch along the seam you made in step 36. This will create the wire channel for later. Then stitch from the corner at **point 9** down to the tip of the wing. This provides an accent.

sew desu ne?

| WWW.CHOLYKNIGHT.COM |



38. INSERT THE PIPE CLEANERS

- a.** Grab your pipe cleaners. In order to strengthen them, we're going to wrap them around each other so they make one piece. Twist one pipe cleaner around the other all the way down.
- b.** Fold over the ends of the pipe cleaners by about $\frac{1}{2}$ ". This will keep the ends from accidentally poking anyone.
- c.** To insert the pipe cleaners, we're going to make some small holes in the back of the plush. Begin by transferring the **placement markings** from the paper pattern for the holes. The holes for the wings are about $\frac{3}{4}$ " away from the center back and $\frac{1}{4}$ " down from the neck seam. Using the tip of your sharpest, smallest scissors, poke a small hole into the wing markings on each side.

- d.** Use these holes to insert your wire through the body. If you have hemostats it makes the process much easier. Insert the hemostats through both holes, in one hole and out the other. If the hemostats don't fit, you can cut the hole larger, but only 1-2 millimeters. The fabric will quickly spread out from even the smallest cut. Grab your wrapped wire from the other side of the body.

→ ***If you cut a hole that's too big, you can cinch it closed again with a gathering stitch.***

- e.** Use your hemostats to pull the wire through both sides. Pull the wire through so it's even on both sides.



sew desu ne?

| WWW.CHOLYKNIGHT.COM |



39. SECURE THE WINGS

- a. Slide the wings onto the wire using the channels you stitched in step 37. Align the wings so they're flush against the side of your plush's body.
- b. Ladder stitch the folded edge of the wing to the body of your plush.
- c. Go around to the other side so you've ladder stitched all the way around. Repeat for both wings.



CONGRATS!
This completes your plush! Now give it a big hug!

sew desu ne?

| WWW.CHOLYKNIGHT.COM |

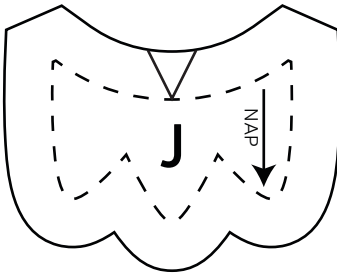
TEST SQUARE

2"

measure this square to
be sure you've printed
at the proper
proportions

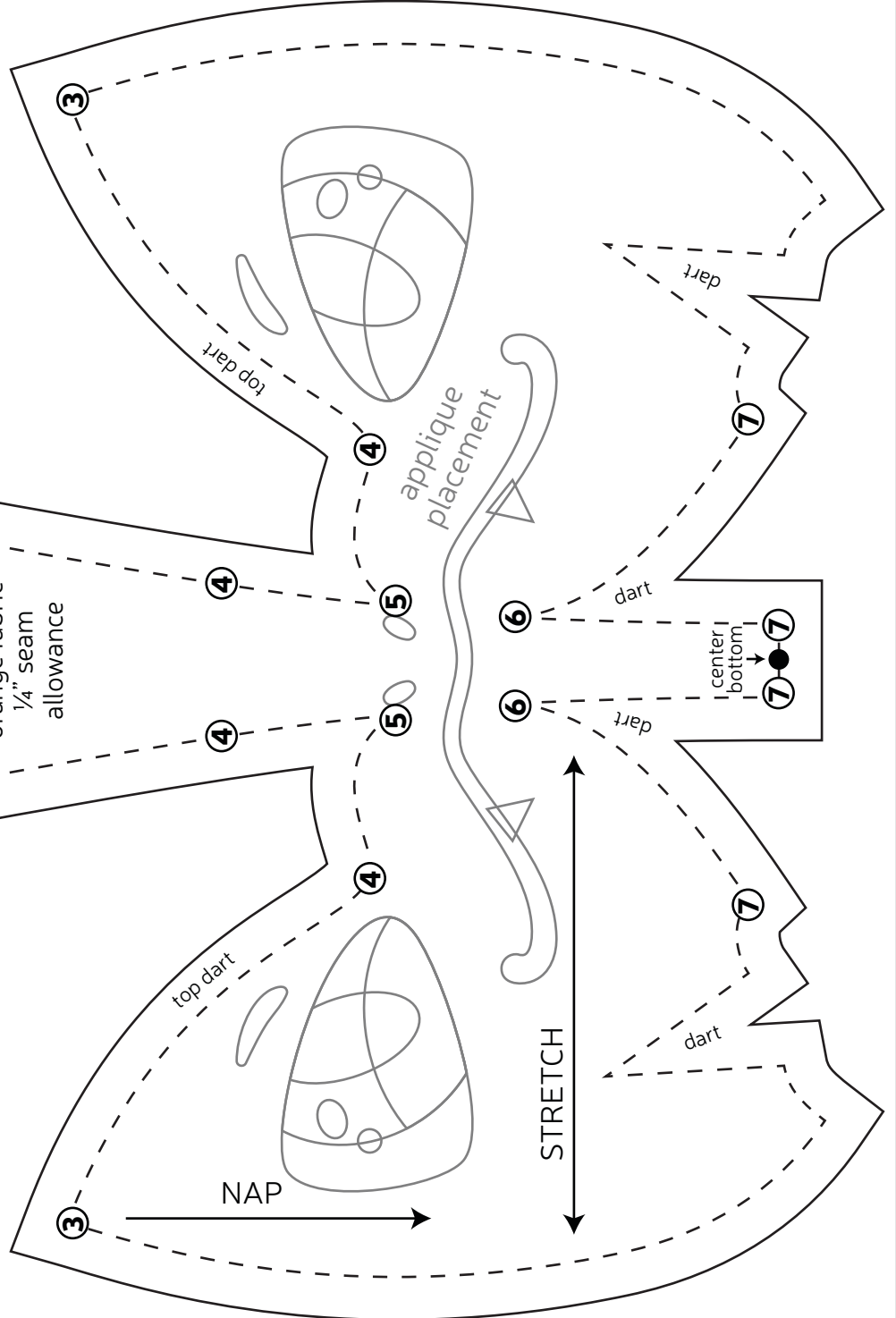
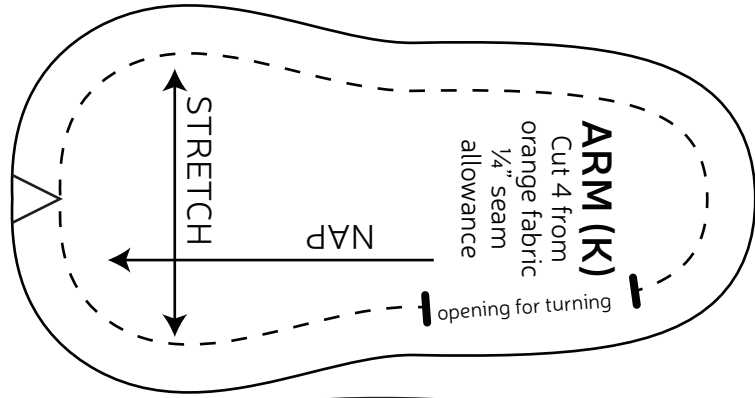
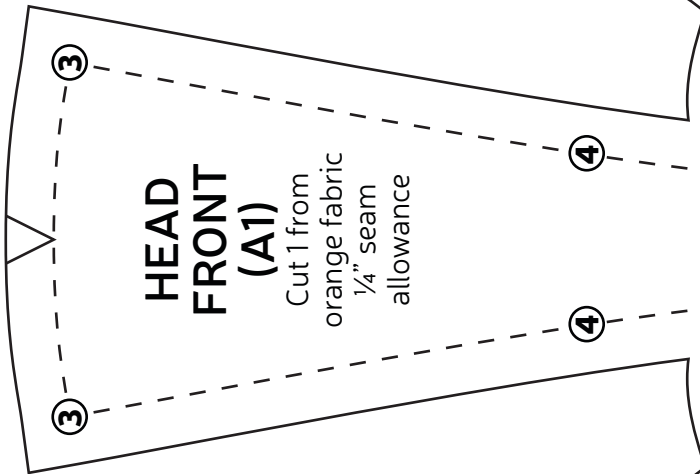
CLAW (J)

Cut 8 from white fabric
1/4" seam allowance



HEAD FRONT (A1)

Cut 1 from
orange fabric
1/4" seam
allowance



HEAD CENTER (A2b)

Cut 1 from orange fabric
1/4" seam allowance

STRETCH

NAP

center bottom

FOOT BOTTOM (H)

Cut 2 from orange fabric
1/4" seam allowance

NAP

center bottom

FOOT BACK (I)

Cut 2 from orange fabric
1/4" seam allowance

STRETCH

NAP

Charizard Plush

PATTERN
WWW.CHOLYKNIGHT.COM

HEAD BACK (E)

Cut 2 from orange fabric
1/4" seam allowance

opening for turning

NAP

STRETCH

HORN (G)
placement

appliance placement

HEAD SIDE (A2a)

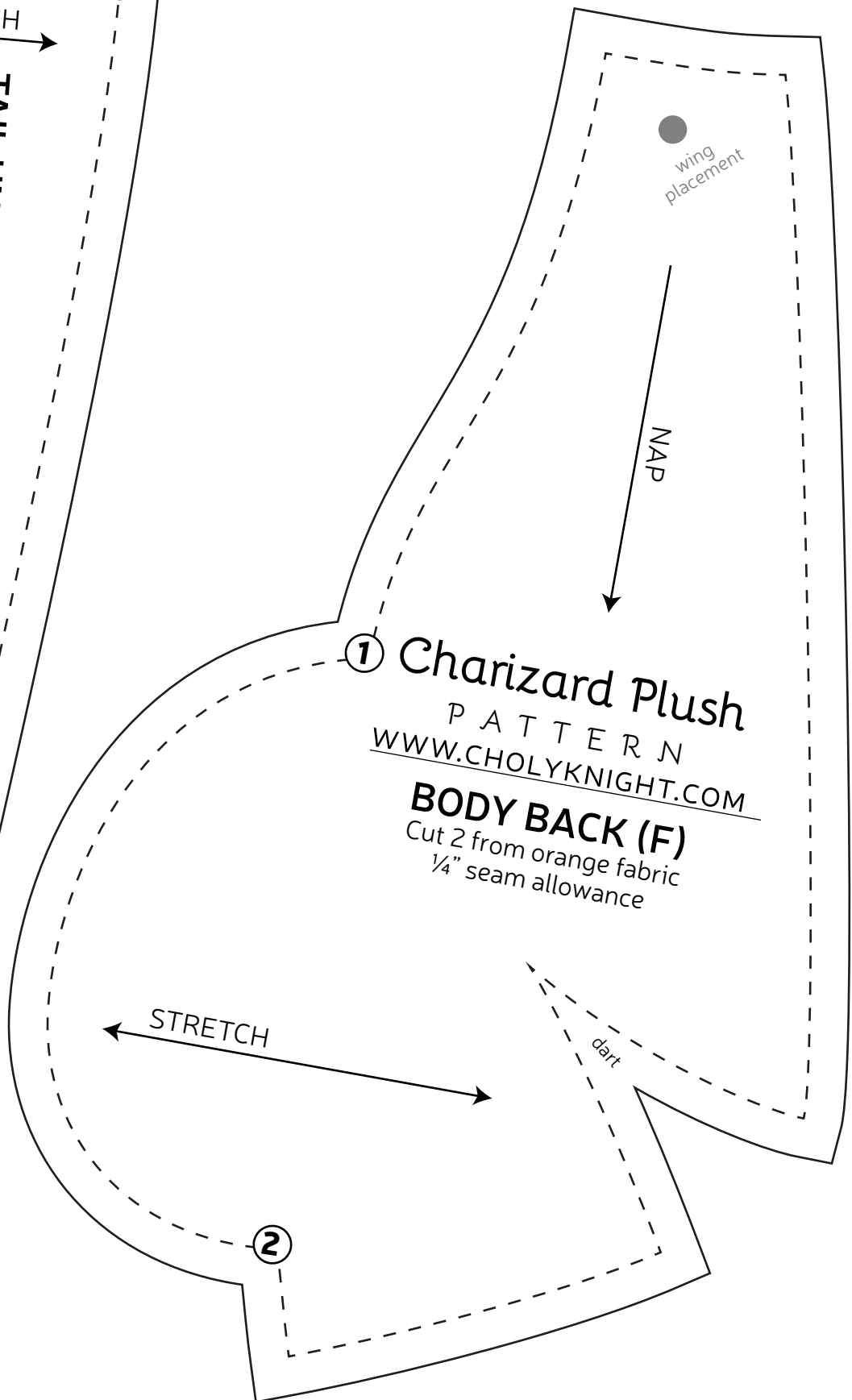
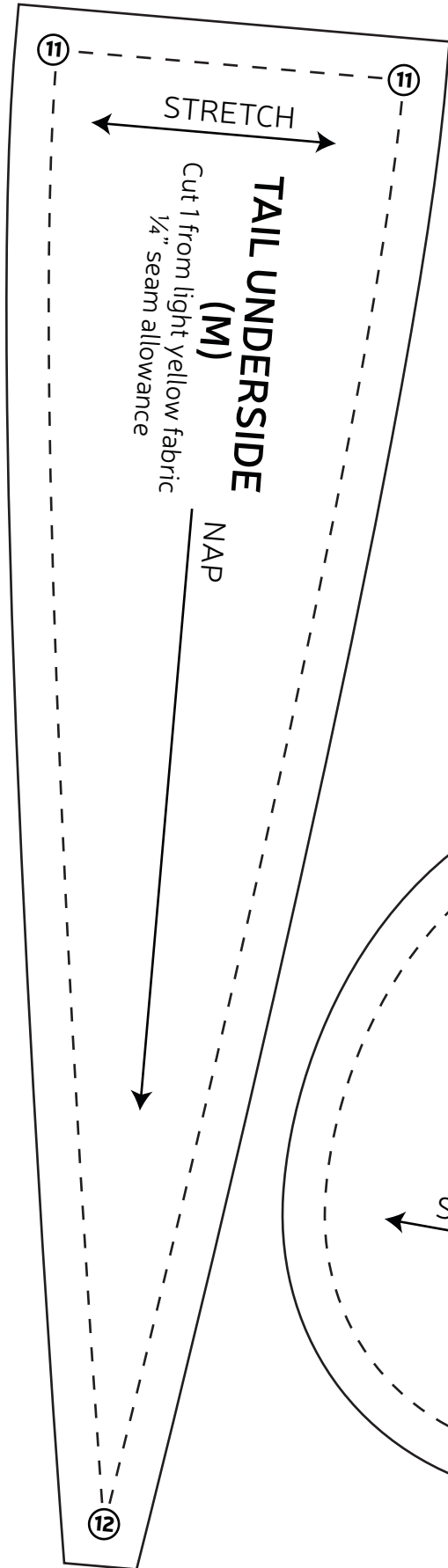
STRETCH

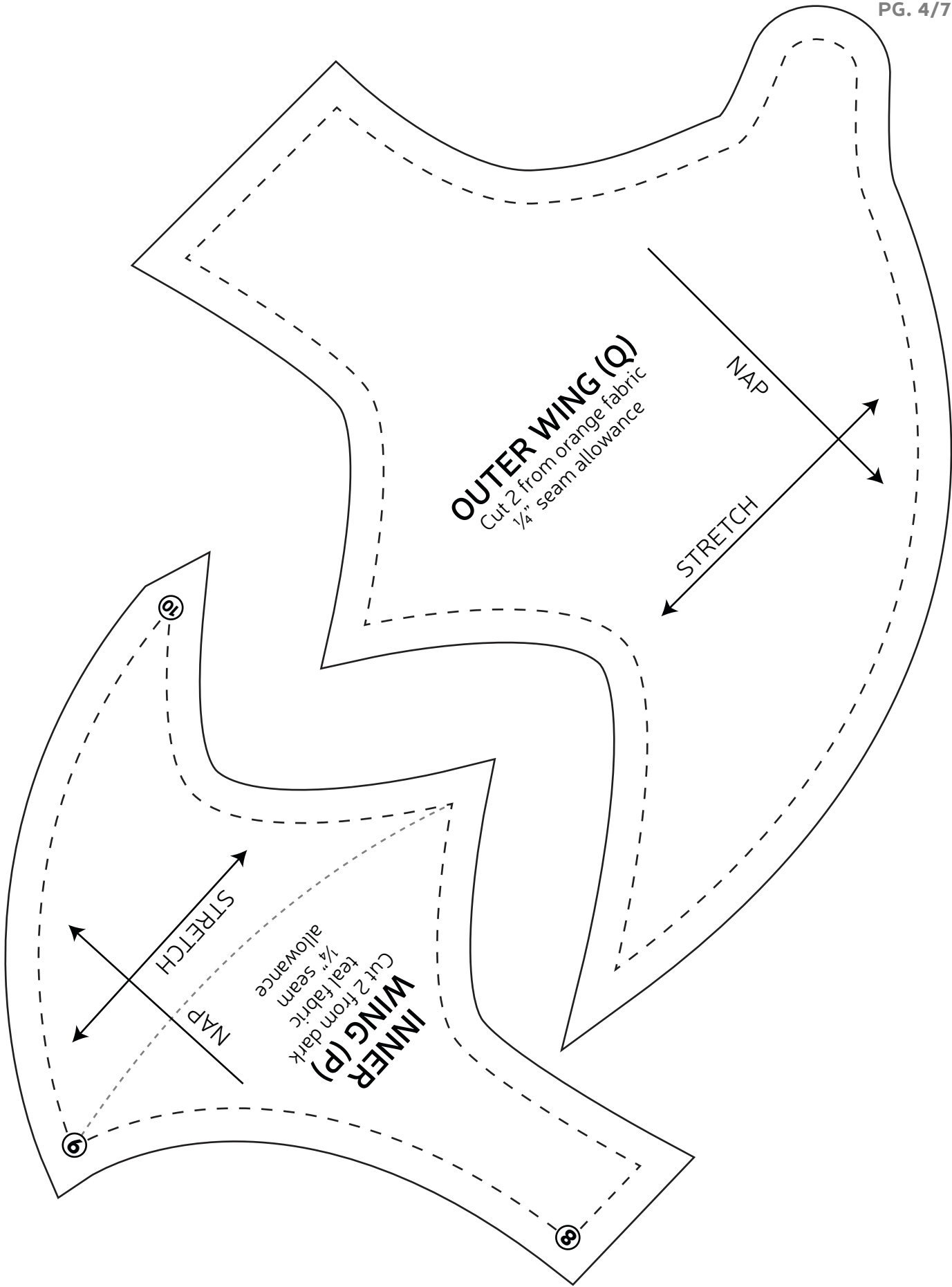
NAP

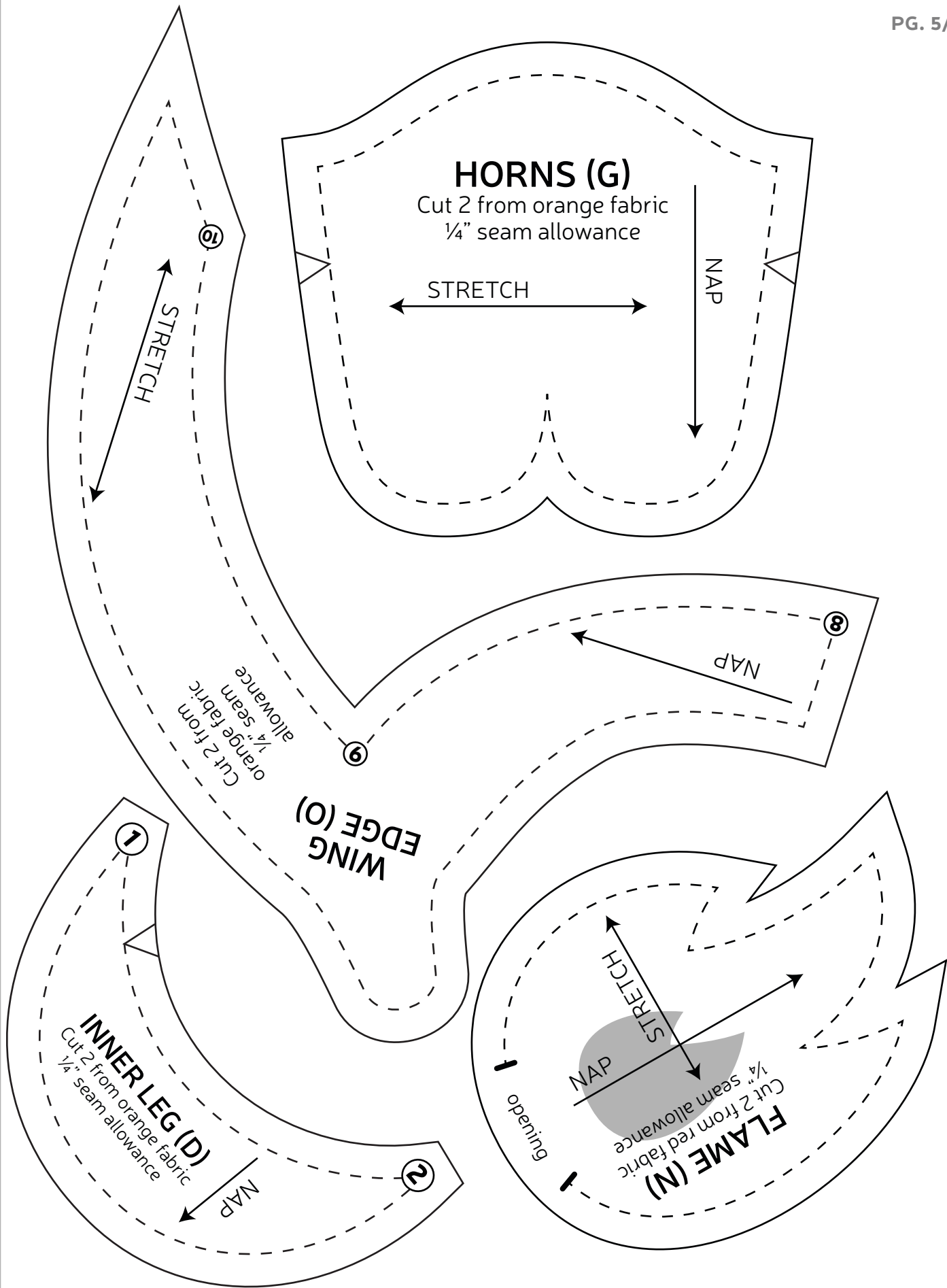
Cut 2 from orange fabric
1/4" seam allowance

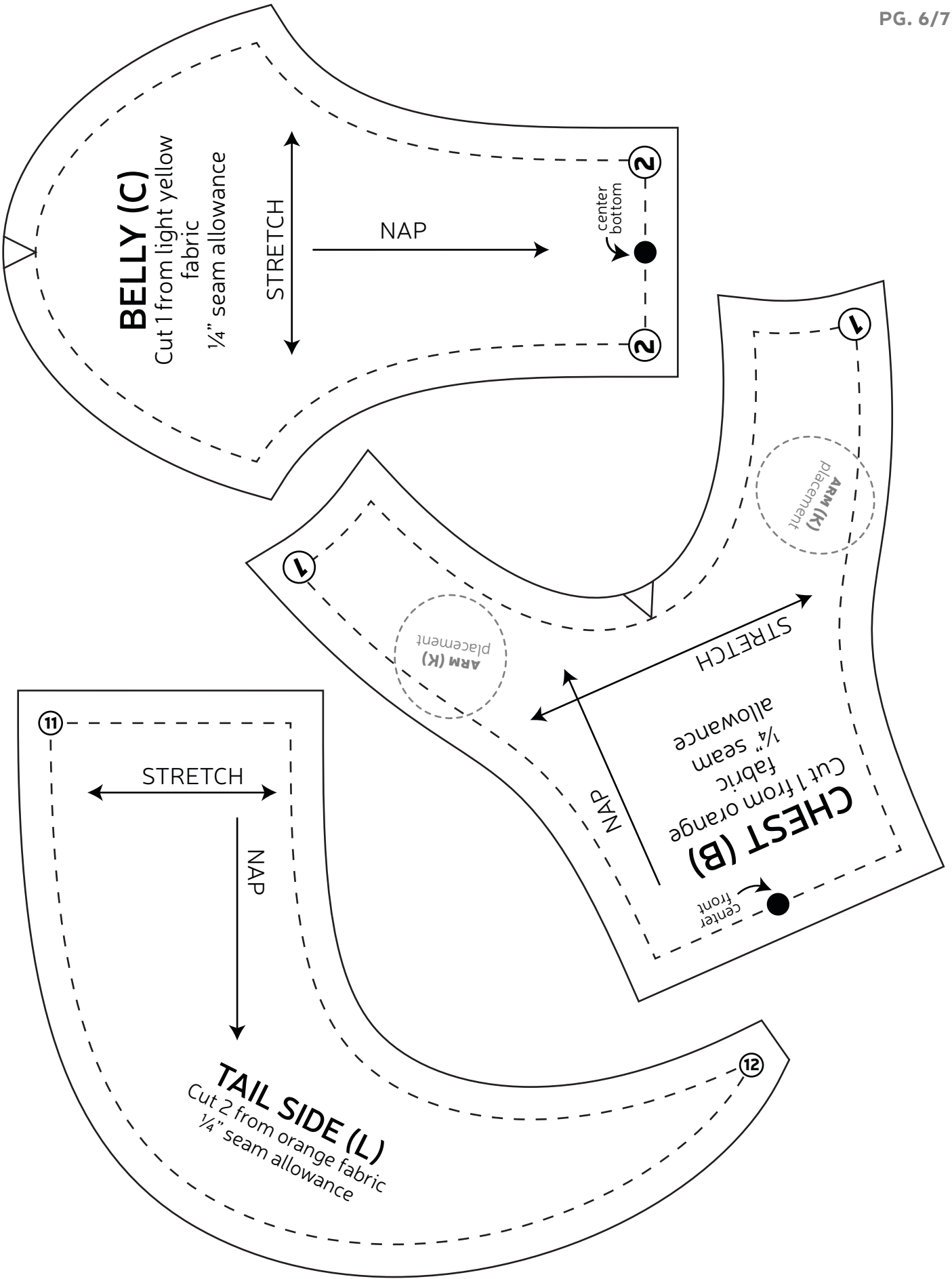
dart

dart



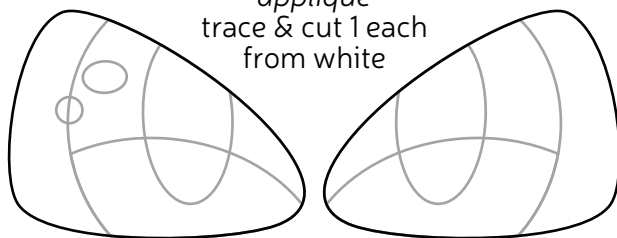






EYE WHITES

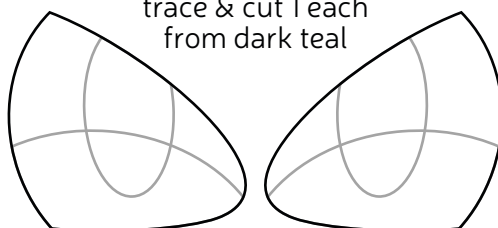
applique
trace & cut 1 each
from white

**EYEBROWS**

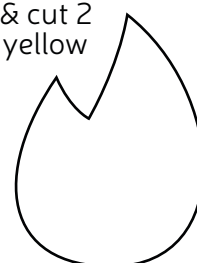
applique
trace & cut 1 each
from black

**IRISES**

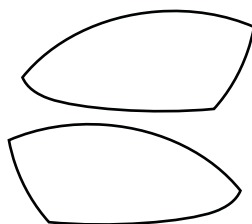
applique
trace & cut 1 each
from dark teal

**FLAME**

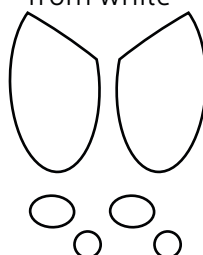
applique
trace & cut 2
from yellow

**IRIS HIGHLIGHTS**

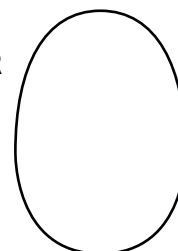
applique
trace & cut 1 each
from teal

**EYE SHINES**

applique
trace & cut 1 each
from white

**FOOT CENTER**

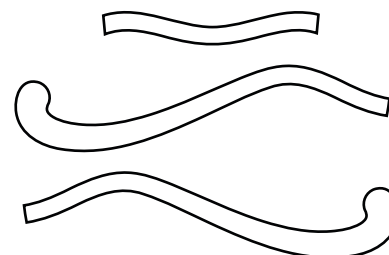
applique
trace & cut 2
from light
yellow

**MOUTH & NOSTRILS**

applique
trace & cut 1 each from
black

SEPARATE MOUTH PIECES

applique
trace & cut 1 each from black

**TEETH**

applique
trace & cut 2
from white

