

love koi



plushies



A SEWING PATTERN BY





## love koi plushies

SEWING TUTORIAL



# love, koi plushies

This project was both inspired by the Japanese pun where 'koi' means both 'carp' and 'love' and the beautiful yin-yang moon-spirit carp from Avatar: The Last Airbender. Together the carp nestle into a yin-yang pattern, and their matching markings form a heart shape. A wonderful gift for someone you love.

DIFFICULTY: ■■■■■□□□□□

A little more complex than your average plush pattern, since it's not symmetrical. The heart motif is a little tricky too, but if you're just making a plain fish then you're good on that front!

MAKES:

a set of two plushies, each 13" long (from head to tail), 9" wide (from fin to fin), and 6" tall (from base to dorsal fin)

## MATERIALS & TOOLS

- 18" x 18" piece or 1/2 yd. of minky or fleece in first main color (white used here)
- 18" x 18" piece or 1/2 yd. of minky or fleece in second main color (red used here)
- 1/4 yd. of minky or fleece in accent color (pink used here)
- 3" x 3" piece of black applique fabric (felt, flannel, cotton, etc.)
- 3" x 3" piece of light or heavy duty fusible web
- Batting
- Matching sewing thread
- Basic sewing tools (sewing machine, scissors, iron, needles, pins, fabric marker, seam ripper)

### BEFORE YOU BEGIN:

1. Print out the project pattern, **PAGES 8-11**
2. Assemble the pattern pieces by lining up the page markings (A1 to A2, B3 to B4, and so on)
3. Lay out the pattern pieces on your fabric and cut them out
4. Mark the fabric pieces with the guidelines from the pattern

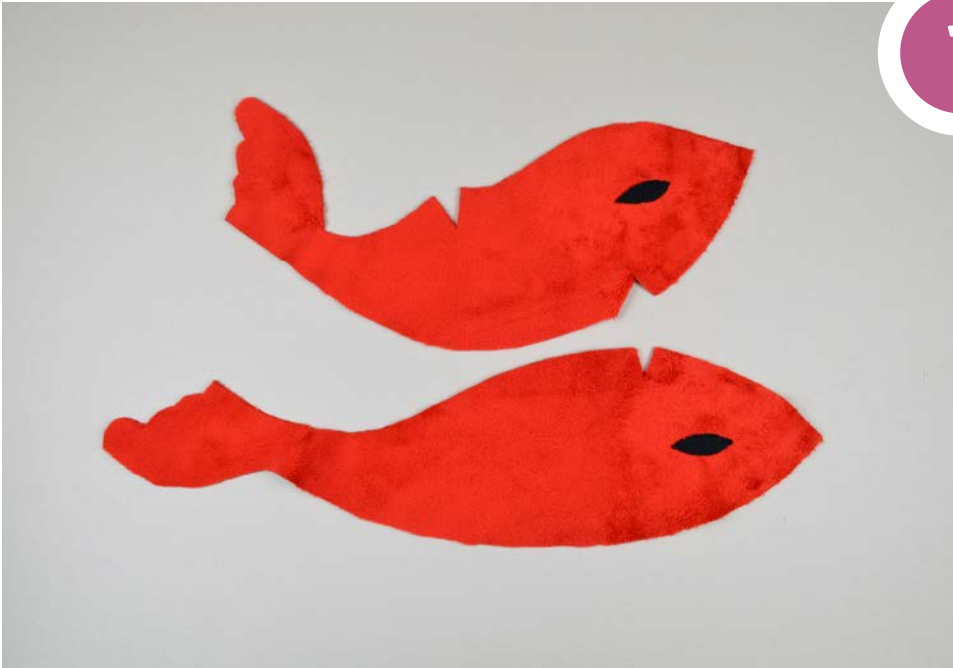


sew desu ne?

| [WWW.CHOLYKNIGHT.COM](http://WWW.CHOLYKNIGHT.COM) |

# love koi plushies

SEWING TUTORIAL



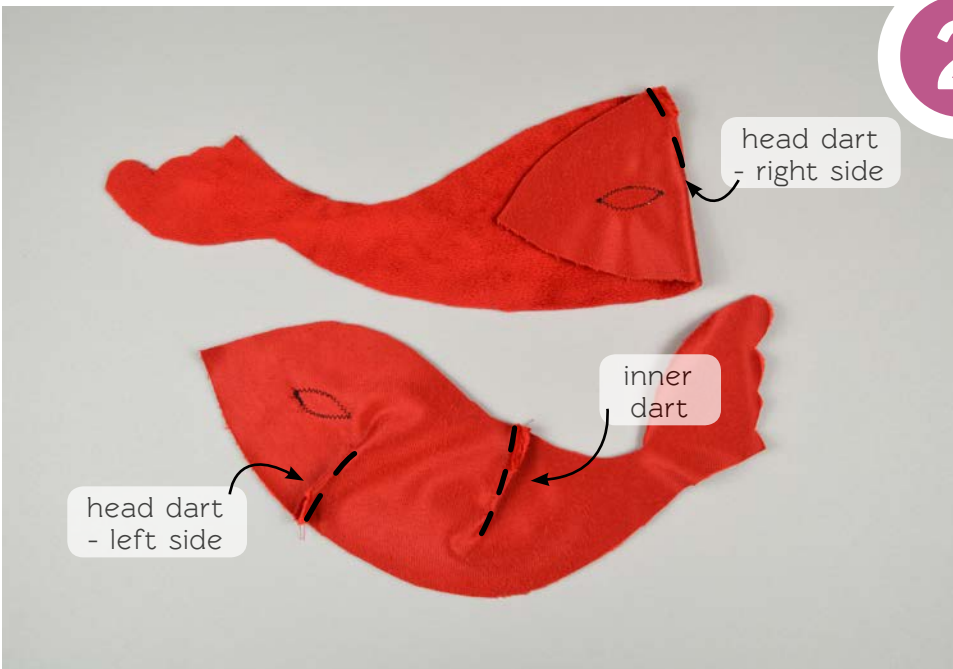
1

The first step is to applique eyes on each side of the fish.

Trace the applique outline onto the paper side of your fusible web and fuse the web to your applique fabric.

Cut out the pieces, remove the paper, then fuse the fabric to the fish sides as shown. One eye on each side of the fish, placed where the markings indicate on the paper pattern.

Repeat this with the second (white) fish pieces so each fish has eyes.



2

Next up is to sew the darts on both sides of the fish.

If you haven't already, mark the dart lines on the right and left sides of the fish. The right side should have 1 and the left side 2.

Fold the fish with right sides together to make the dart legs meet up, then sew along the stitching lines down to the point to complete one dart. Continue with the other two darts so all the darts are complete.

When finished, repeat with the second (white) fish, for a matching pair.

3

sew desu ne?

| [WWW.CHOLYKNIGHT.COM](http://WWW.CHOLYKNIGHT.COM) |

# love koi plushies

SEWING TUTORIAL

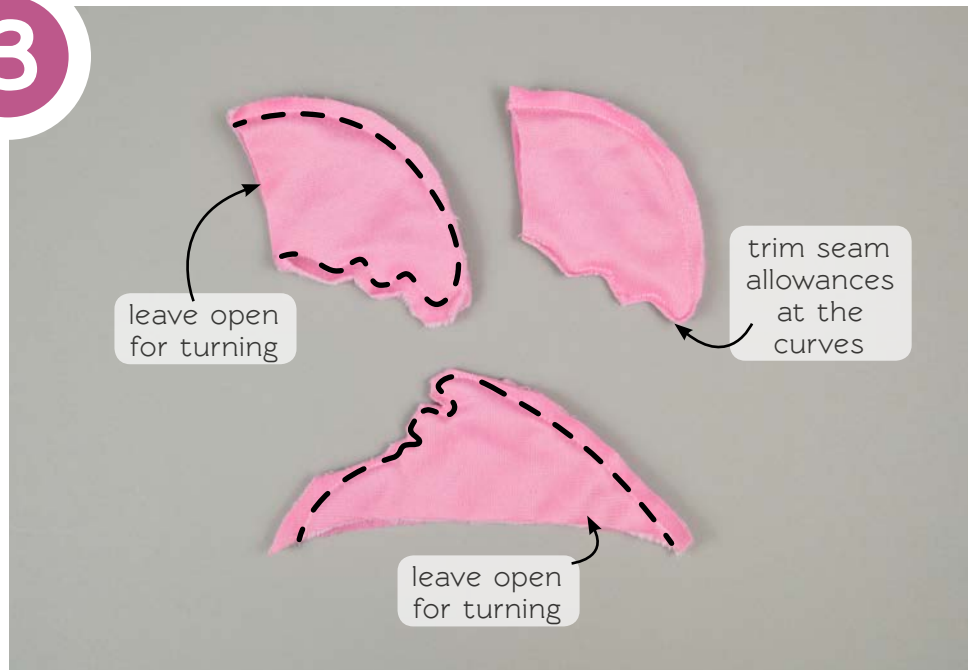
Now to sew all the accent fins.

Begin by aligning two side fins together with right sides facing. Sew along the long curved edge, leaving the short straight edge free for turning right side out.

Repeat this with the remaining six side fin pieces to create four complete side fins. Then do the same with the top fin pieces (sewing along the curved edge, and leaving the straight-ish edge free).

Trim the seam allowances close to the little curves when complete.

3



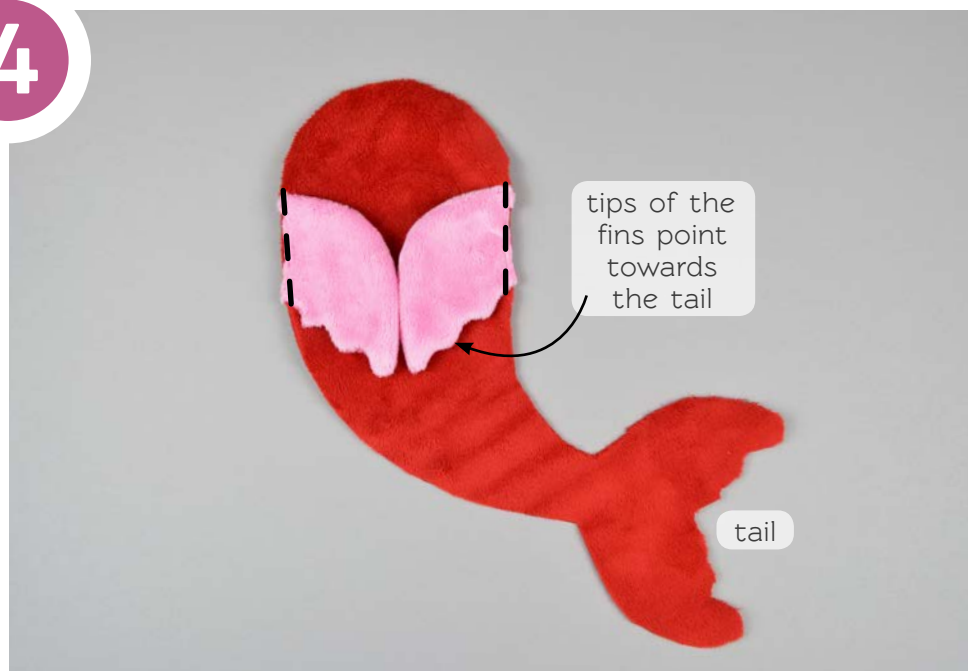
Turn all the fins right side out and press lightly if desired.

Take two of the side fins and align the open edges with the placement lines found on the fish bottom. Be sure the tips of the fins are pointing downward towards the tail.

Baste them in place along this edge within the seam allowance.

Repeat with the remaining two side fins and the other (white) fish bottom for a matching pair.

4



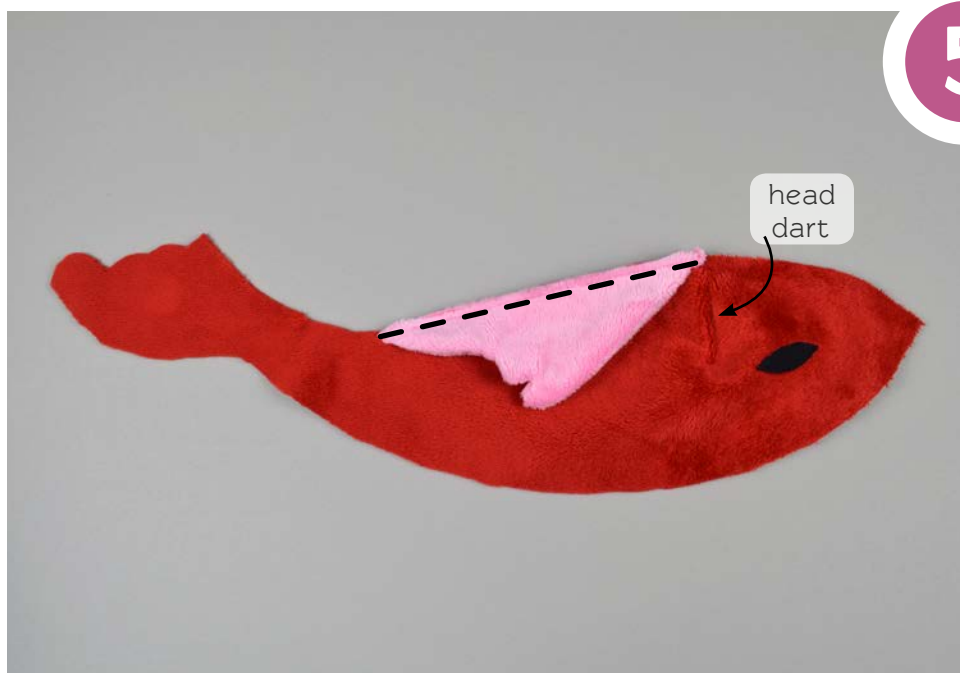
sew desu ne?

| [WWW.CHOLYKNIGHT.COM](http://WWW.CHOLYKNIGHT.COM) |



# love koi plushies

SEWING TUTORIAL



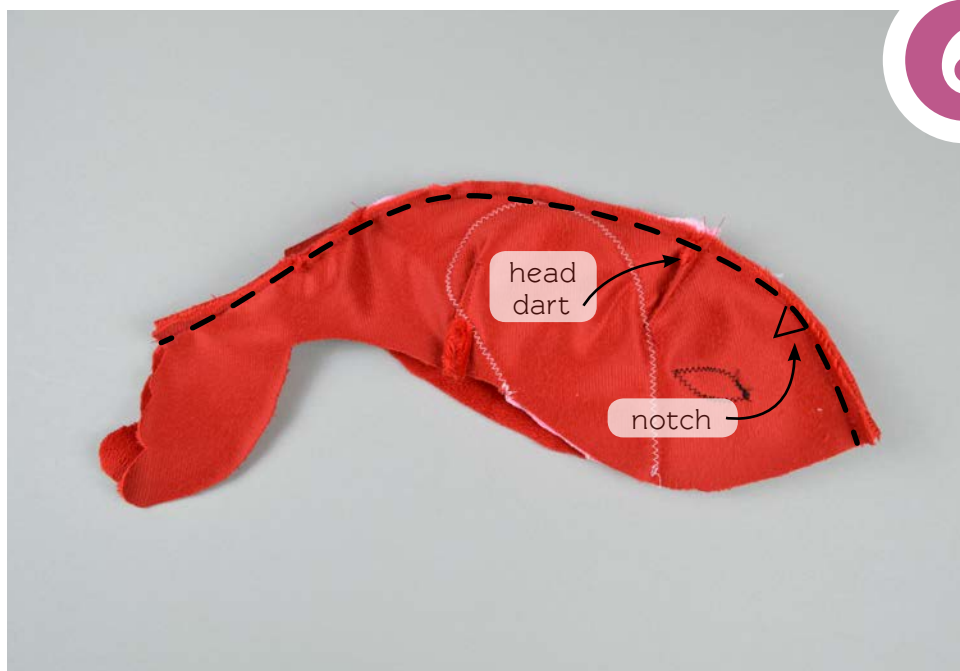
5

The same basting process is done for the top fins.

Take one of the top fin pieces and align the open edge with the placement lines. These placement lines are found on the top right side piece, next to the head dart this piece has.

Make sure the tips of the fin are pointing towards the tail, then baste the fin in place within the seam allowance as before.

Repeat with the other (white) fish and the remaining top fin for a matching pair.



6

Now it's finally time to bring both sides together to create the fish top.

The two sides are joined along the edges with the single notches. When pinning them, you'll find that the head darts match up, and your top fin should be sandwiched in there too.

The edges are a little curvy, but if you adjust the fabric everything should fit. Sew along this edge to bring together both sides of the fish top.

When complete, repeat for the other (white) fish for a matching pair.

# love koi plushies

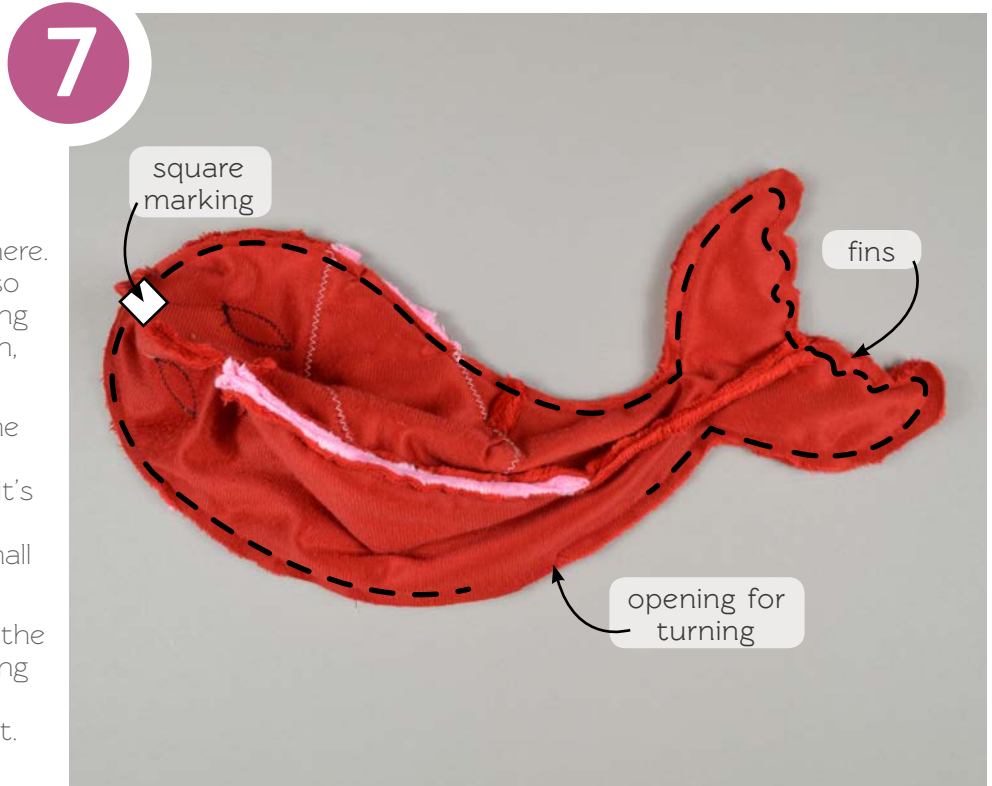
SEWING TUTORIAL

The outer raw edges of this top fish piece should now line up with the outer edges of the fish bottom with right sides facing.

The fins should match up pretty much exactly, so start pinning there. The center front seam should also match up with the square marking found on the fish bottom pattern, so pin there as well.

The rest should pin up after some adjusting, but overall the edges should all be the same length. If it's not, you can sometimes stretch the fabric to get away with a small difference.

When it's all pinned, sew around the perimeter of the whole fish, leaving an opening where the pattern indicates for turning right side out.



Trim and clip the seam allowances at the tight curves and corners, then turn the whole fish right side out through the opening.

Stuff the tail just a little bit so it keeps all those little curvy details, but stuff the head relatively firmly so it looks nice and round.

Turn under the seam allowances in the opening and sew it closed with a ladder stitch.

Repeat steps 7 and 8 for the other (white) fish to complete your matching pair.



sew desu ne?

| [WWW.CHOLYKNIGHT.COM](http://WWW.CHOLYKNIGHT.COM) |



# love koi plushies

SEWING TUTORIAL



9

Nestle the two fish into a yin-yang shape like so. This way you can arrange the placement of the heart lobes.

The fish on the right should get one side of the heart, and the left fish gets the other.

The paper pattern shows a general placement guide, about 1/2" away from the top fin and 1/4" away from the eye. But your fish might turn out different so feel free to play around.

Pin the applique piece in place and trim off any excess at the bottom if necessary.

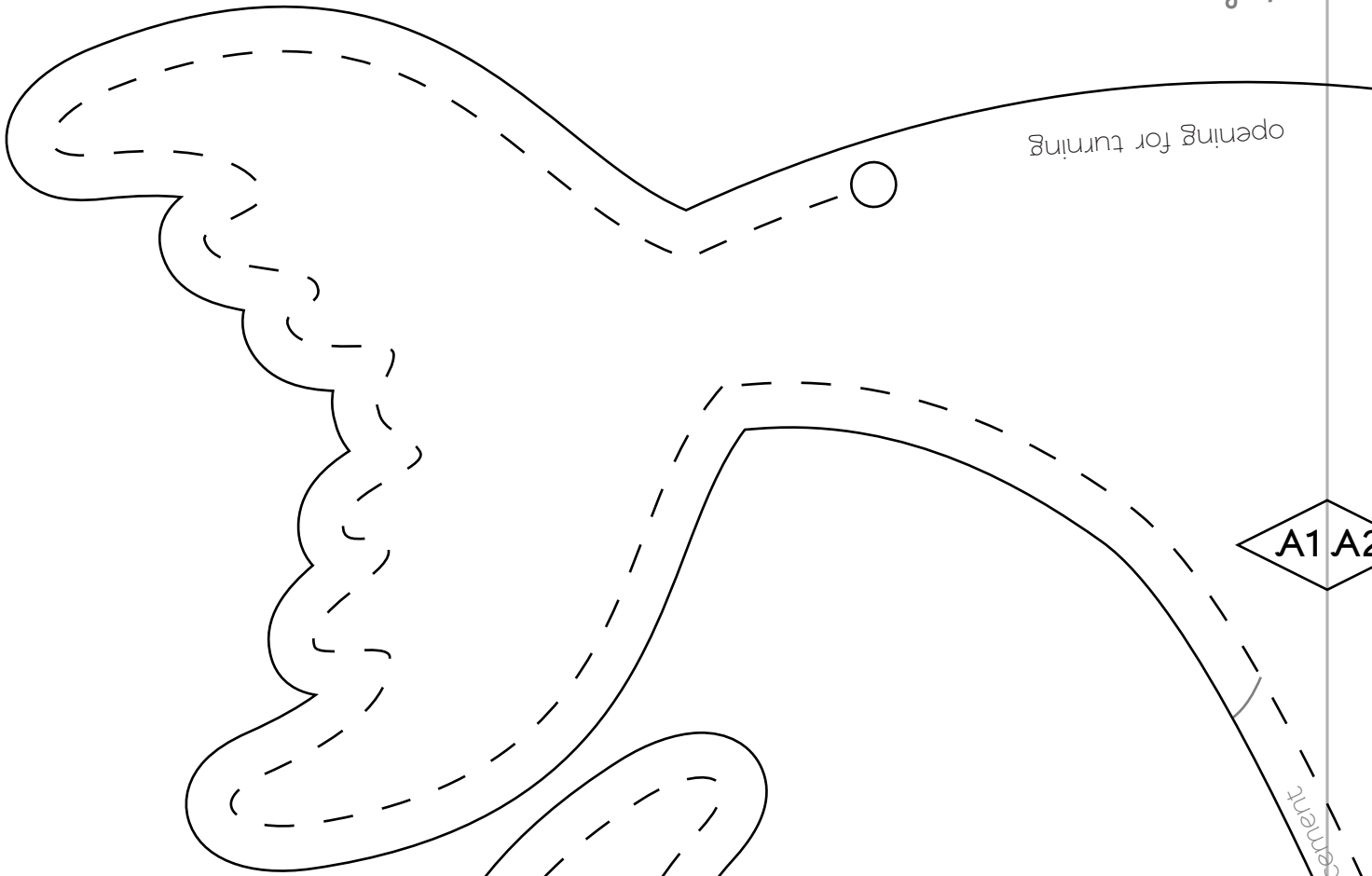


10

Sew around the heart-half shape with a buttonhole stitch or an applique stitch to hold it in place.

Be sure to check periodically to be sure it matches up with its partner so your completed pair looks amazing together!

opening for turning

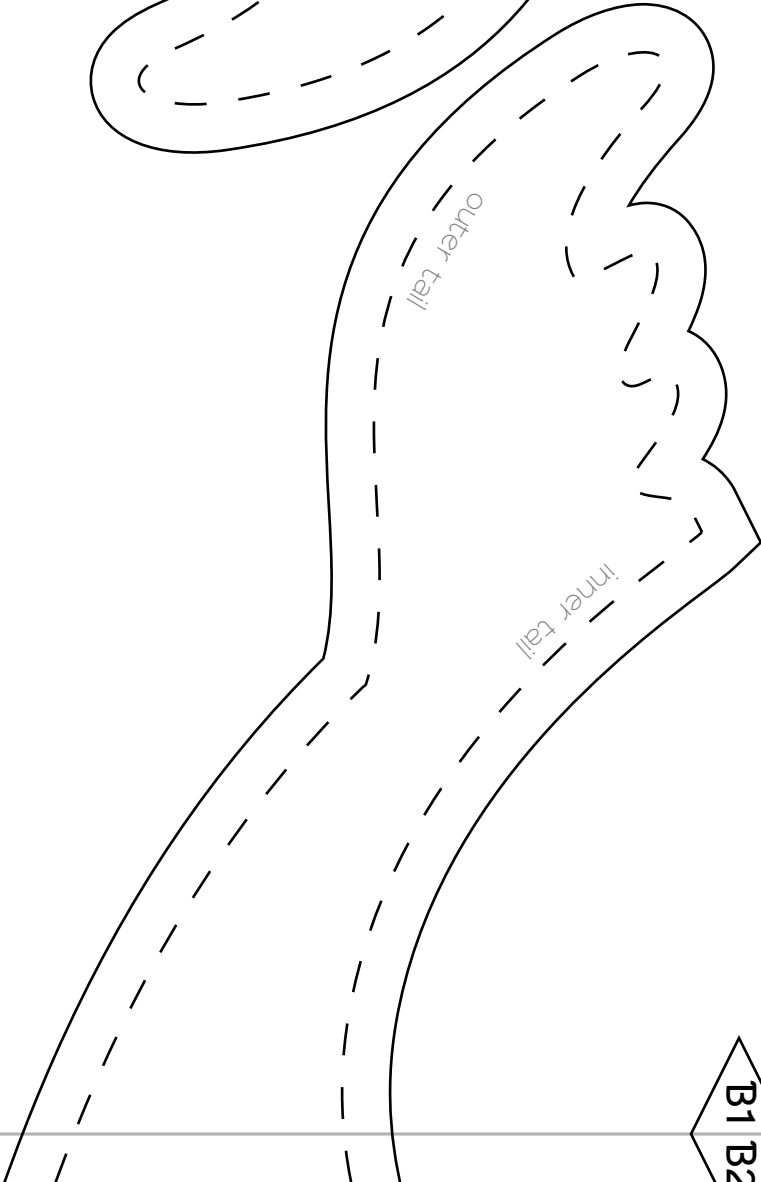


A1 A2

fin placement

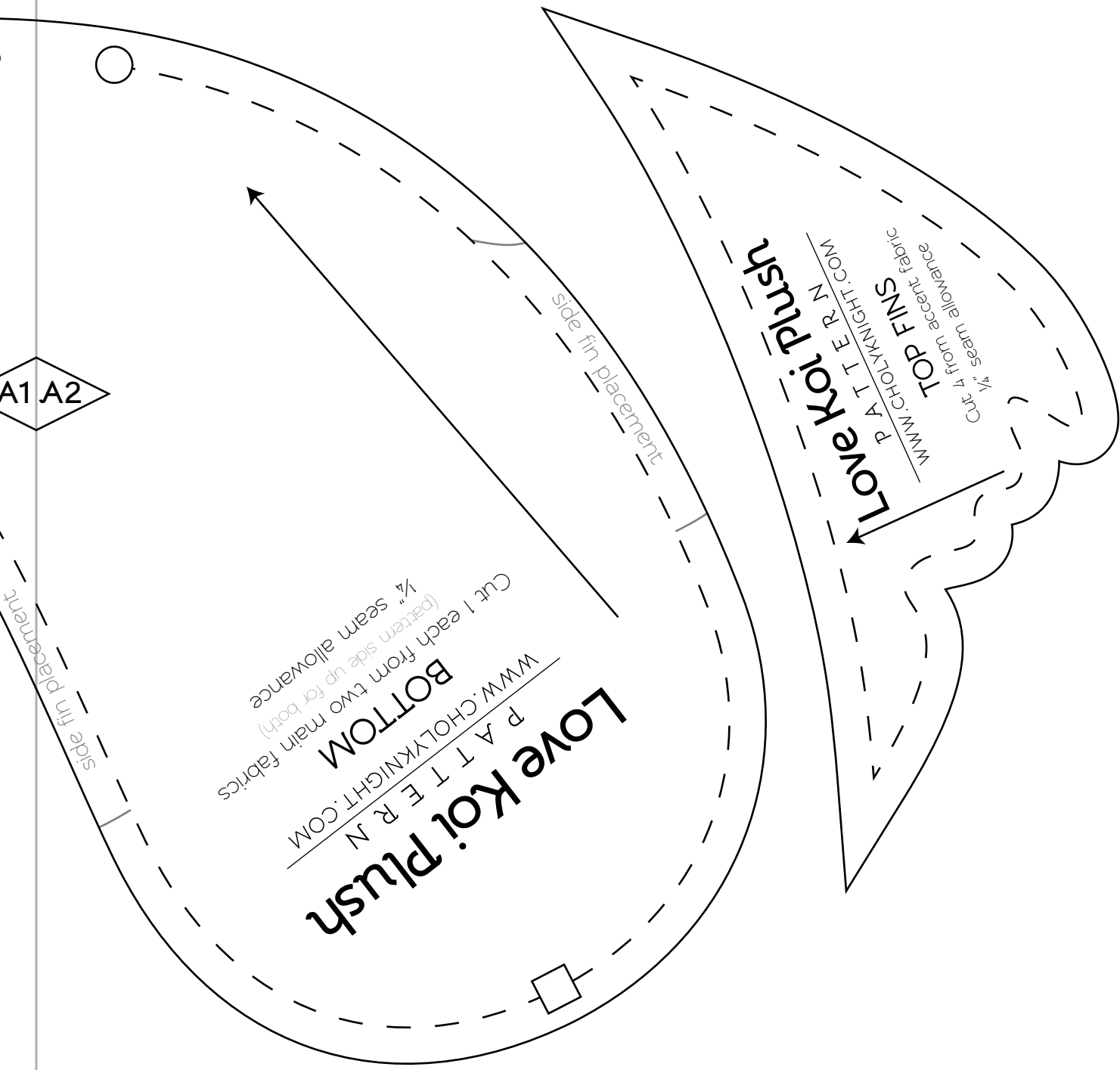
Outer tail

Inner tail



B1 B2



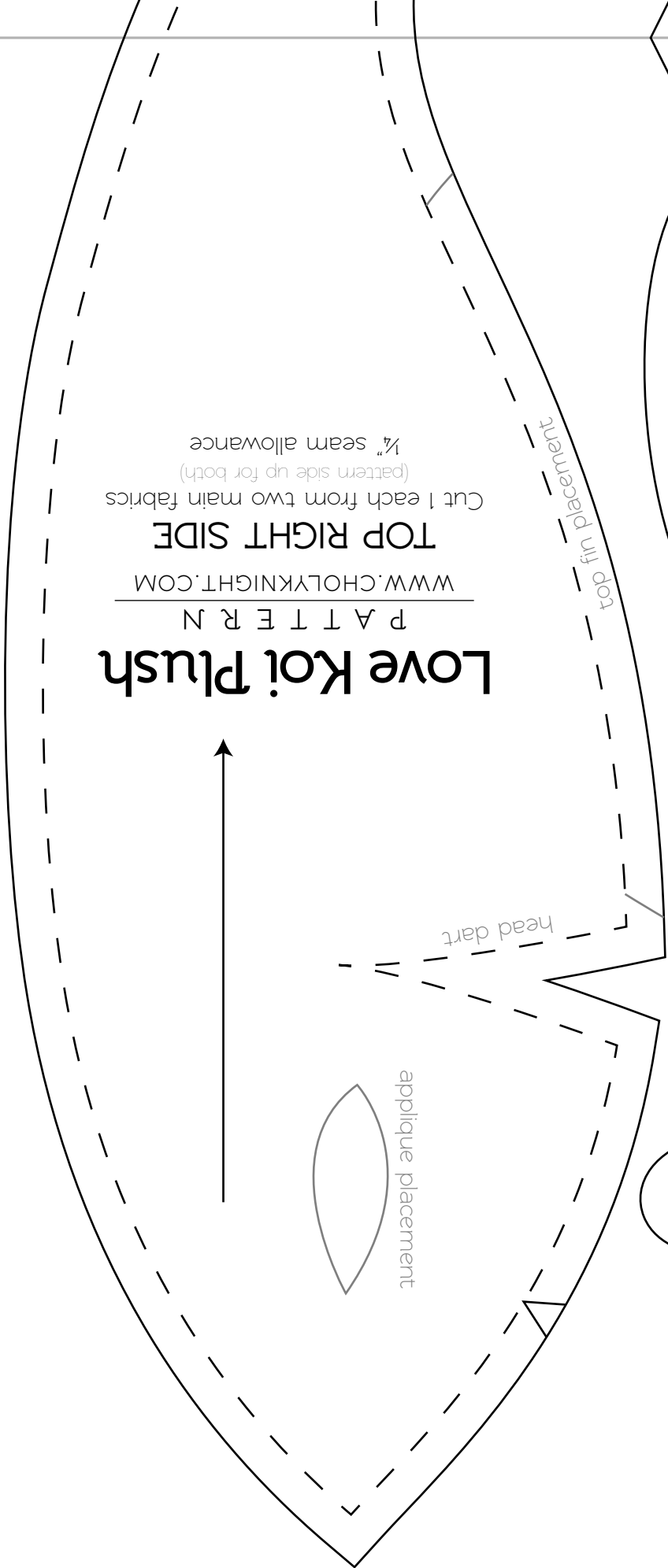
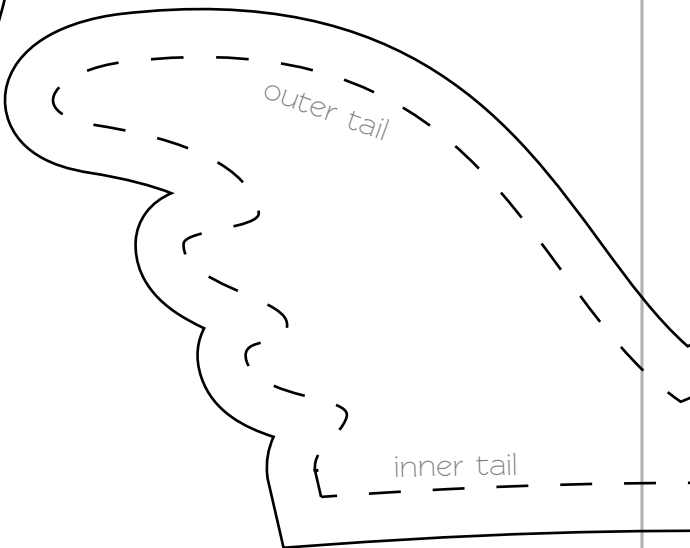
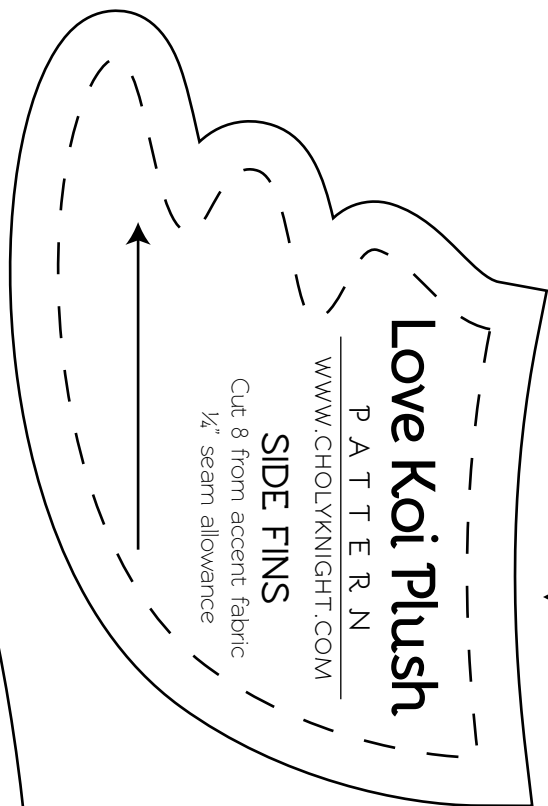


A1 A2

B3 B4

B1 B2

C1 C2



C1 C2

# Love Koi Plush

P A T T E R N  
WWW.CHOLYKNIGHT.COM

HEART APPLIQUE  
Cut 2 from accent fabric  
(one reversed)

# Love Koi Plush

P A T T E R N  
WWW.CHOLYKNIGHT.COM

TOP LEFT SIDE  
Cut 1 each from two main fabrics  
(pattern side up for both)  
1/4" seam allowance

inner dart

heart lobe guideline - left side

heart lobe guideline - right side

applique placement

head dart

## EYE APPLIQUE

Cut 4 from black

