

A1 A2

Kitty Purse

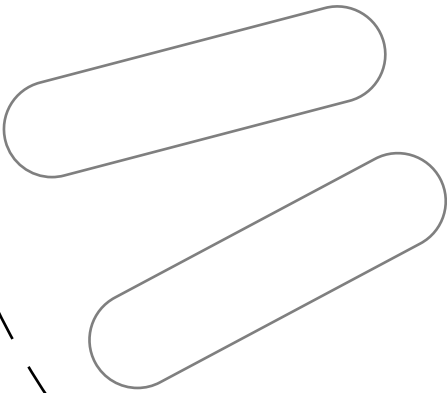
P A T T E R N

WWW.CHOLYKNIGHT.COM

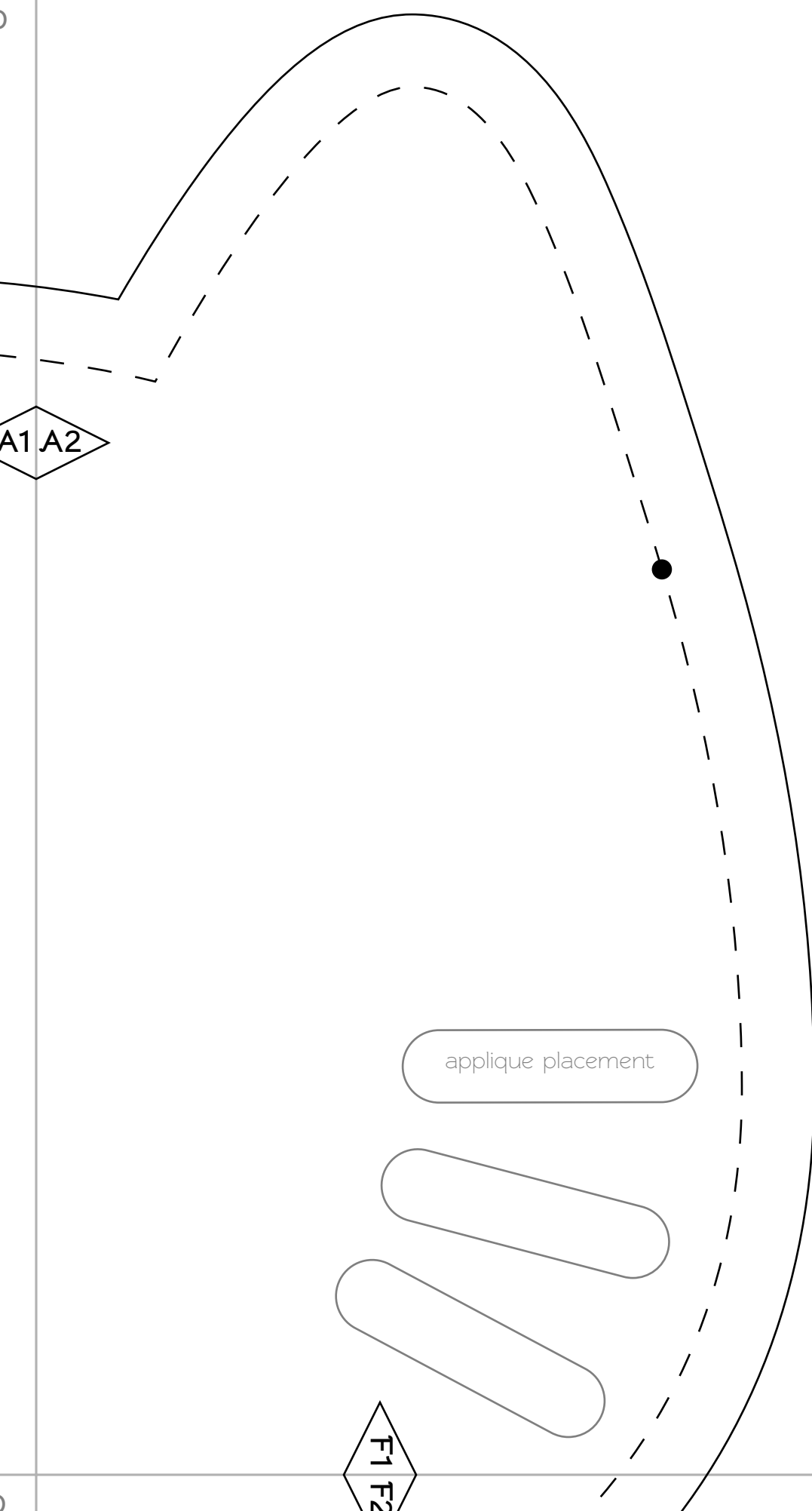
OUTER FRONT & BACK

- Cut 2 of outer fabric
- Cut 2 of lightweight fusible interfacing
- Cut 2 of heavyweight sew-in interfacing
- 1/2" seam allowance

applique placement



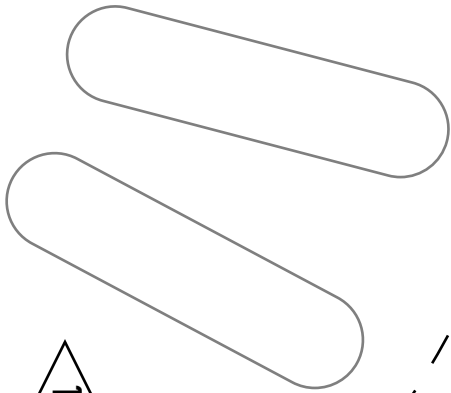
E1 E2



A1 A2

F1 F2

applique placement



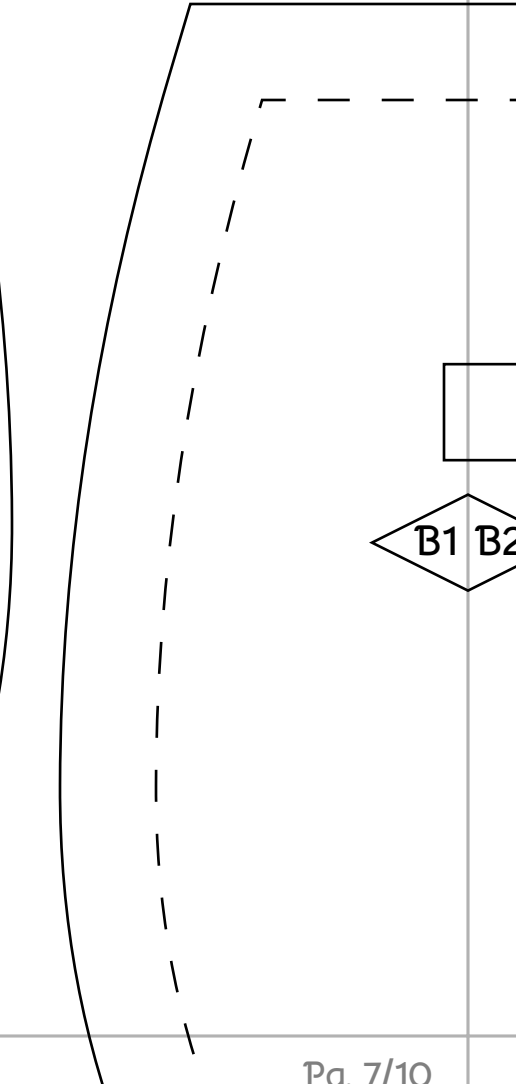
Kitty

P A T T

WWW.CHOLY

INNER

Cut 2 of o
 Cut 2 of lightweight
 1/2" seam a



B1 B2

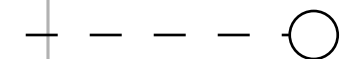
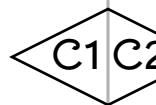
Kitty Purse

P A T T E R N

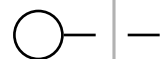
WWW.CHOLYKNIGHT.COM

INNER FACING

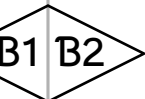
Cut 2 of outer fabric
1/2" weight fusible interfacing
1/2" seam allowance



opening for turning



zipper guideline



Kitty Purse

P A T T E R N

WWW.CHOLYKNIGHT.COM

LINING FRONT & BACK

Cut 2 of lining fabric
1/2" seam allowance



C1 C2

zipper

Kitty Purse

P A T T E R N

WWW.CHOLYKNIGHT.COM

HIDDEN POCKET

Cut 2 of lining fabric
1/4" seam allowance

D1 D2

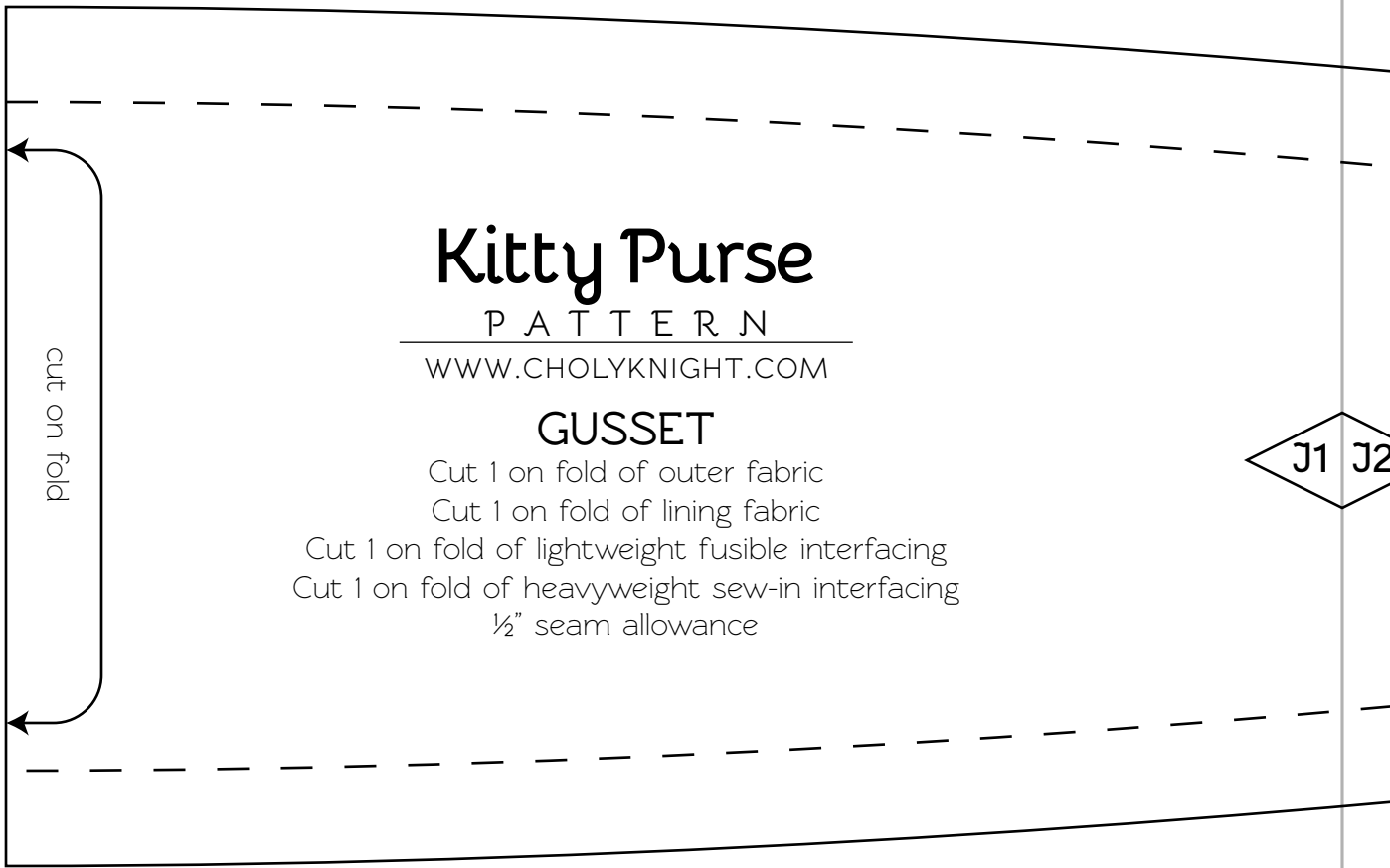
H1 H2

zipper guideline

D1 D2



I1 I2



Kitty Purse

P A T T E R N

WWW.CHOLYKNIGHT.COM

GUSSET

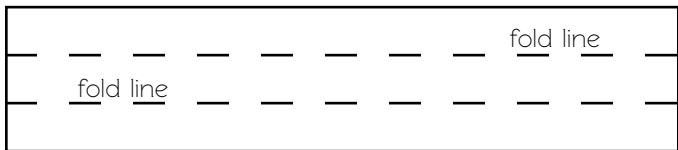
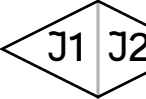
Cut 1 on fold of outer fabric

Cut 1 on fold of lining fabric

Cut 1 on fold of lightweight fusible interfacing

Cut 1 on fold of heavyweight sew-in interfacing

1/2" seam allowance



Kitty Purse

P A T T E R N

WWW.CHOLYKNIGHT.COM

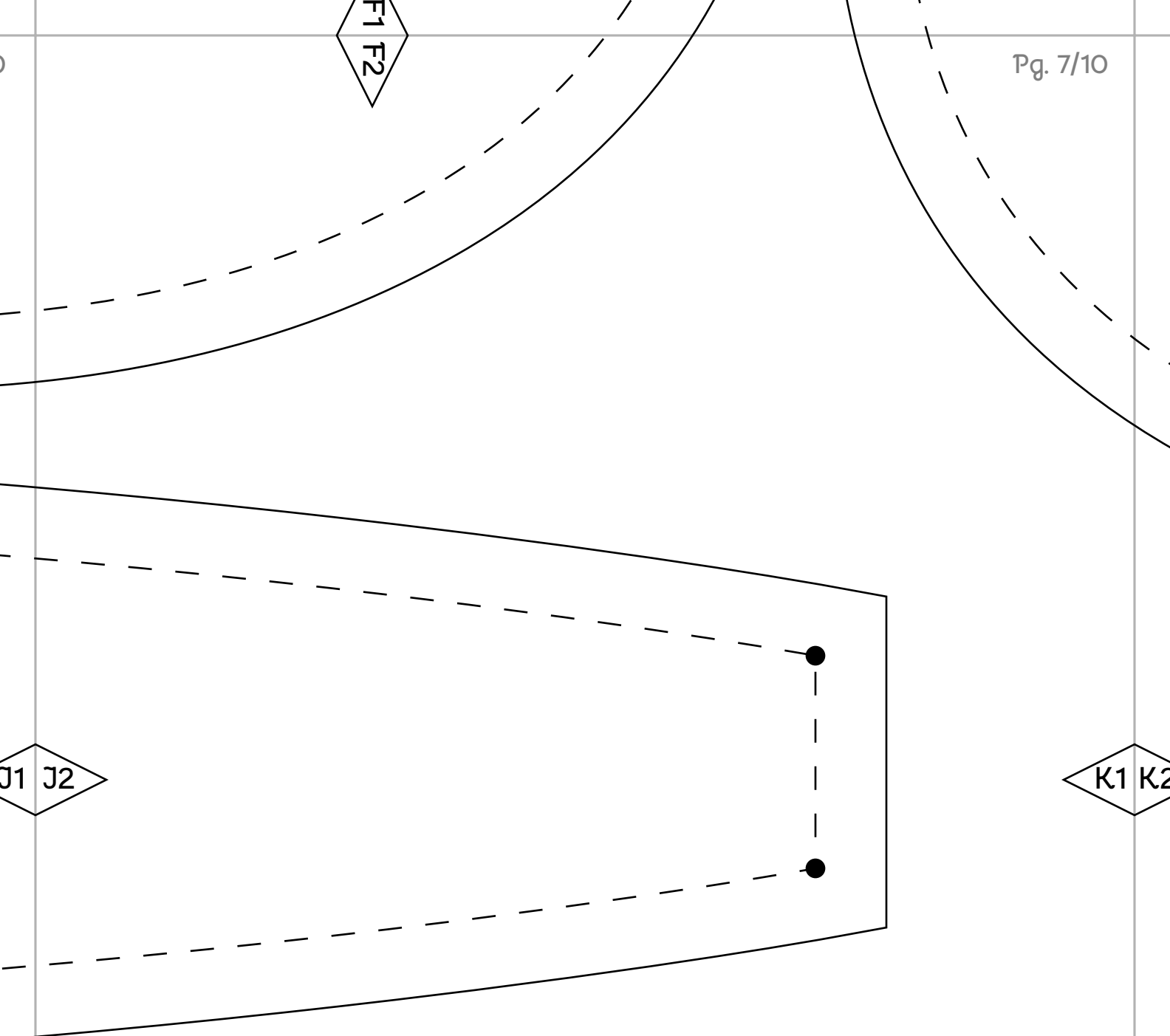
BUCKLE LOOP

Cut 1 of outer fabric

F1 F2

J1 J2

K1 K2



Kitty Purse

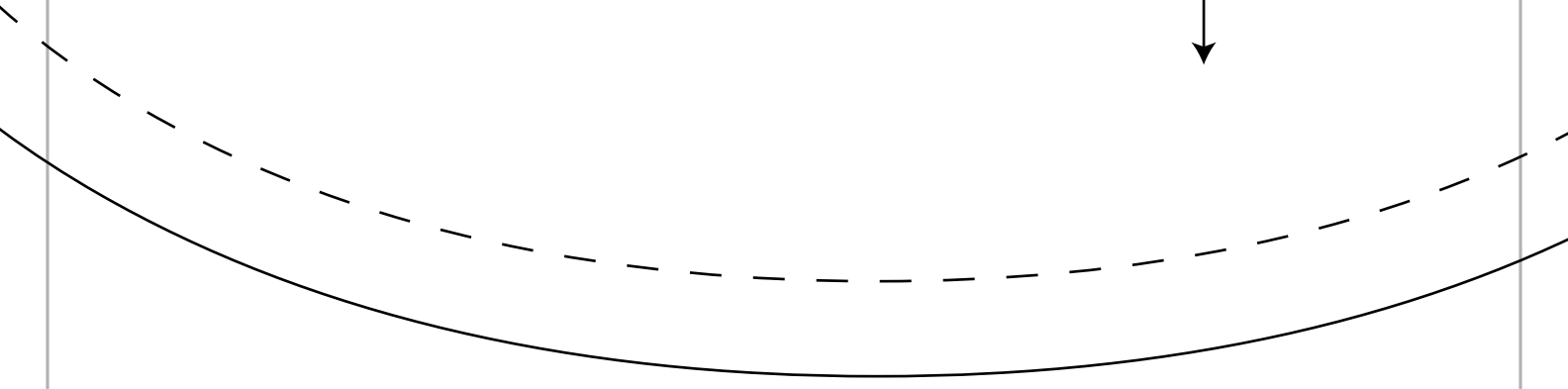
P A T T E R N

WWW.CHOLYKNIGHT.COM

WHISKER APPLIQUE

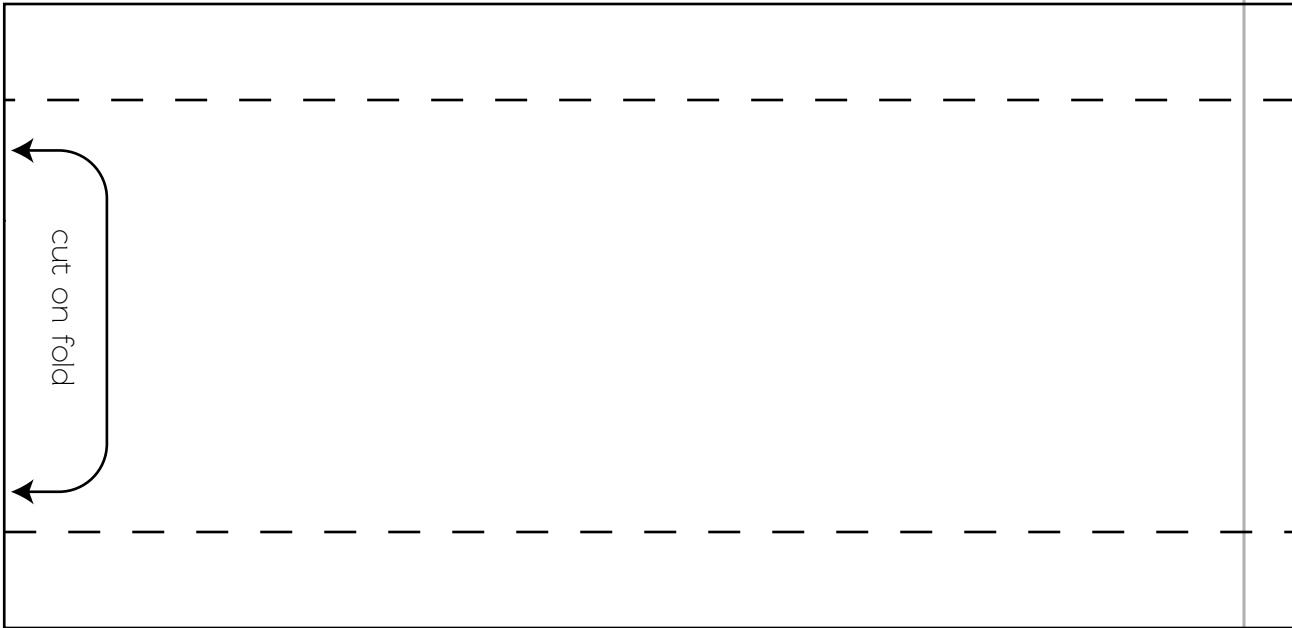
Cut 6

G1 G2



K1 K2

L1 L2



H1 H2

L1 L2

M1 M2

Kitty Purse

P A T T E R N

WWW.CHOLYKNIGHT.COM

STRAP

Cut 1 on fold of outer fabric

Cut 1 on fold of lightweight fusible interfacing (sans seam allowances)

1/2" seam allowance

M1 M2

Cut 2 of quilt batting (sans seam allowances)
1/2" seam allowance

LINING POCKETS

WWW.CHOLLYKNIGHT.COM

P A T T E R N

Kitty Purse



M1 M2

note: cut points on
one end only

