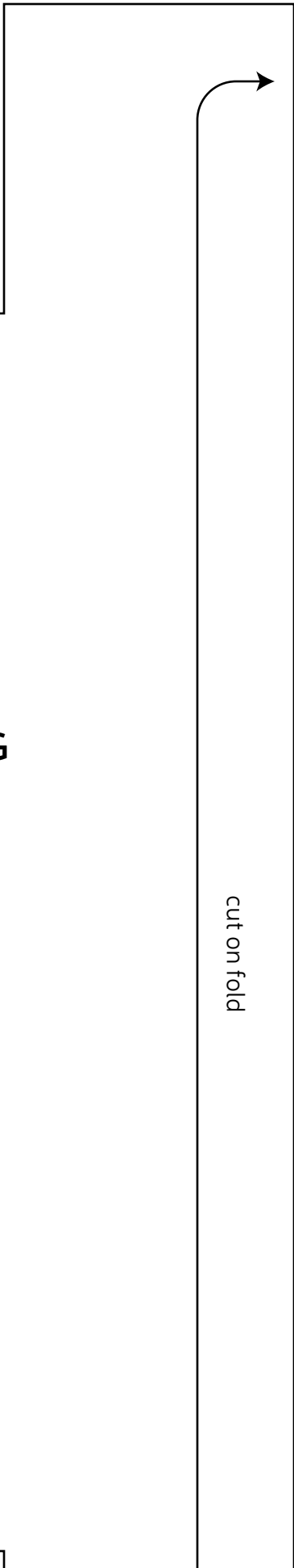


Box Pouch
 P A T T E R N
 WWW.CHOLYKNIGHT.COM

ZIPPER TABS

Cut 4 of outer fabric
 1/2" seam allowance





Box Pouch

P A T T E R N

WWW.CHOLYKNIGHT.COM

BOX POUCH INTERFACING

Cut 1 on fold of heavy interfacing

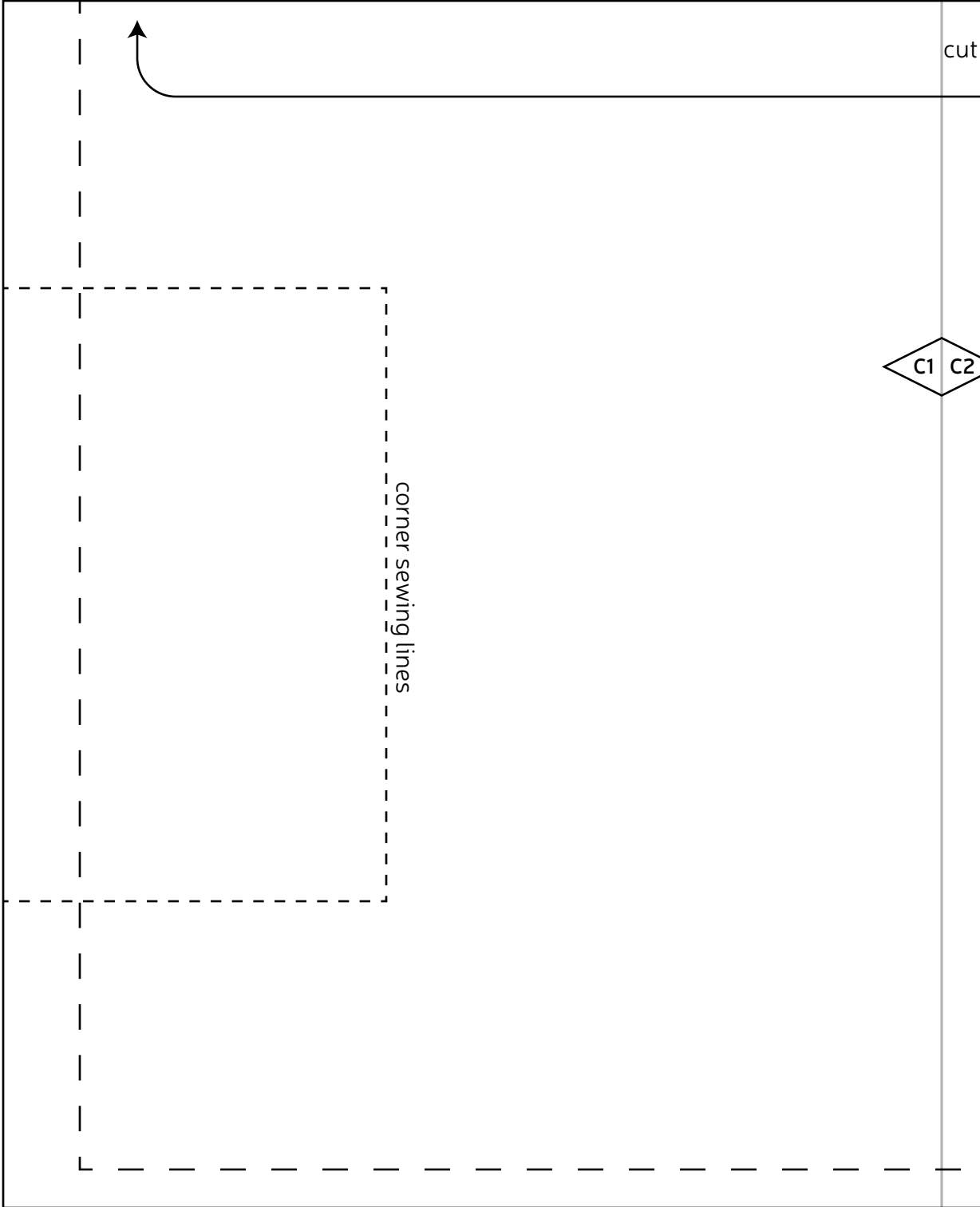
A1 A2

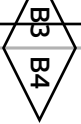
B3 B4

B1
B2

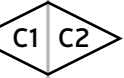
C1
C2

cut





cut on fold



Box Pouch

P A T T E R N

WWW.CHOLYKNIGHT.COM

BOX POUCH

Cut 1 on fold of outer fabric
Cut 1 on fold of lining fabric
1/2" seam allowance

corner sewing lines

