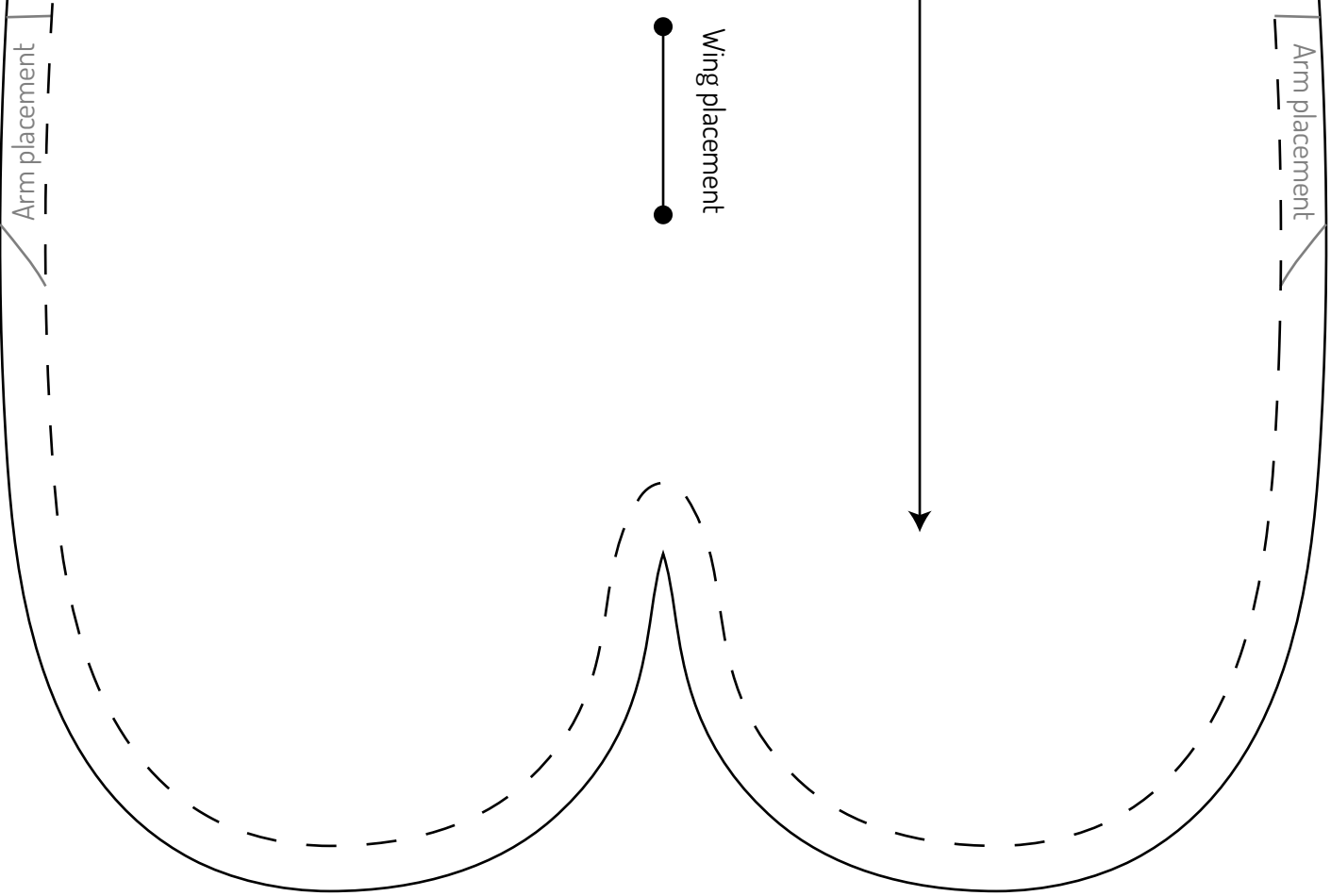


Cthulhu Plush

[www.cholyknight.com](http://www.cholyknight.com)

### Body Back

Cut 1 of fleece  
1/4" seam allowance



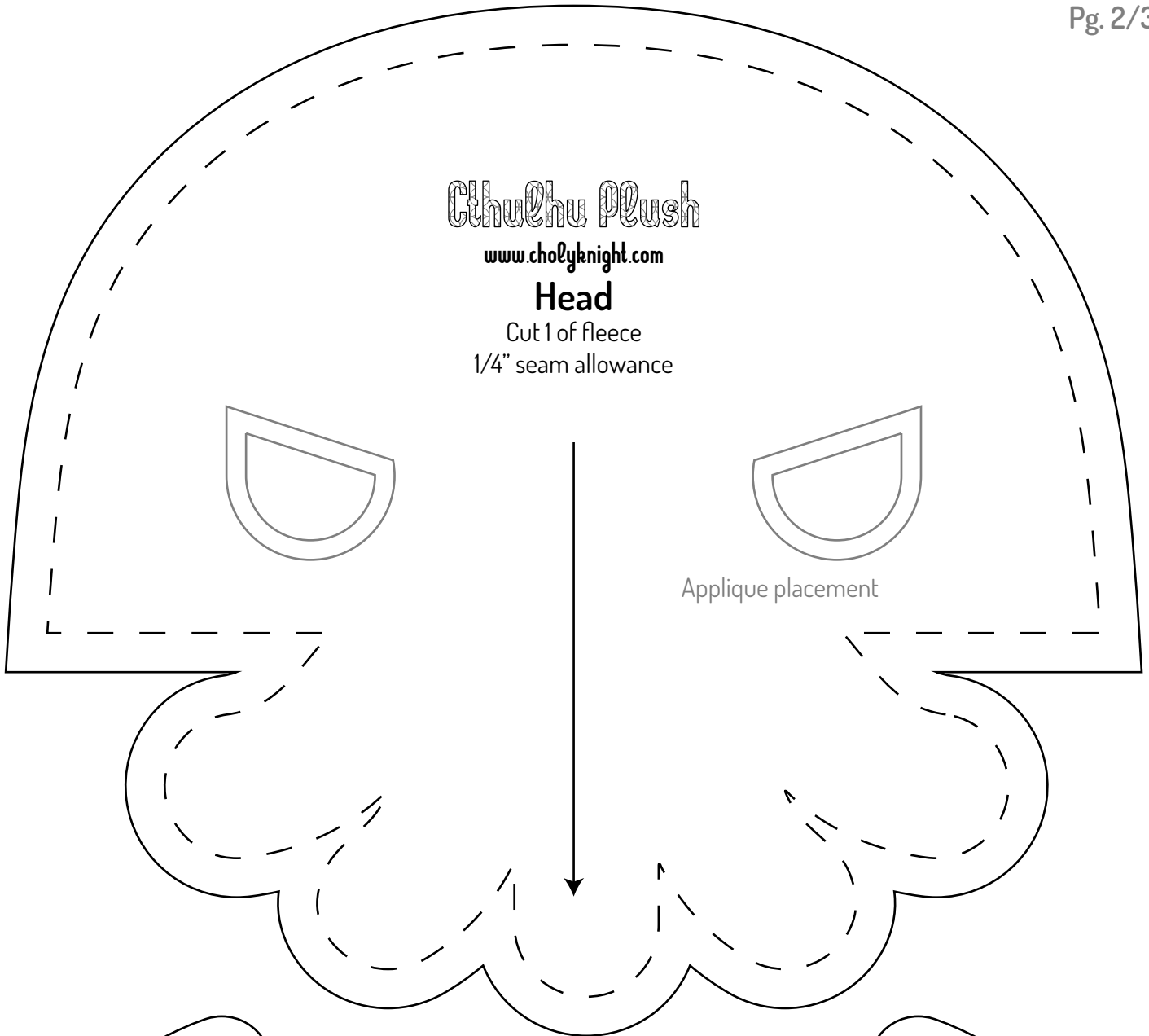
Cthulhu Plush

[www.cholyknight.com](http://www.cholyknight.com)

### Head

Cut 1 of fleece  
1/4" seam allowance

Applique placement



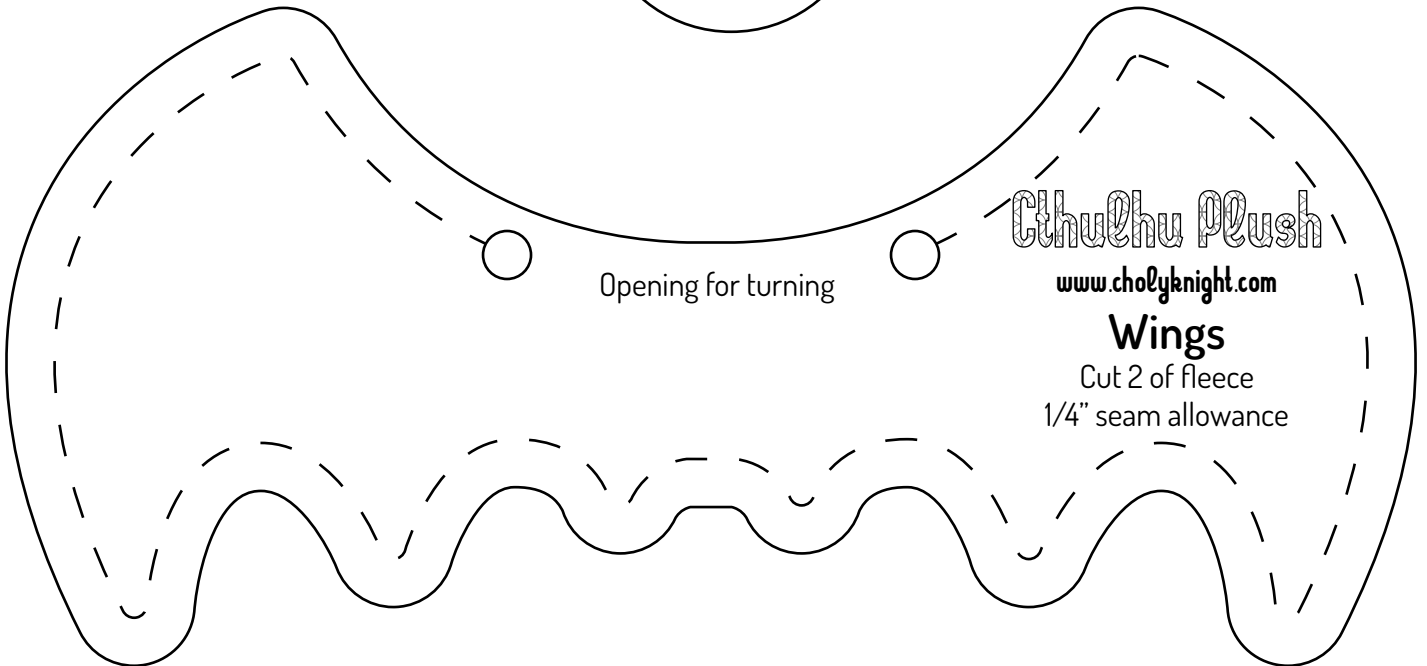
Cthulhu Plush

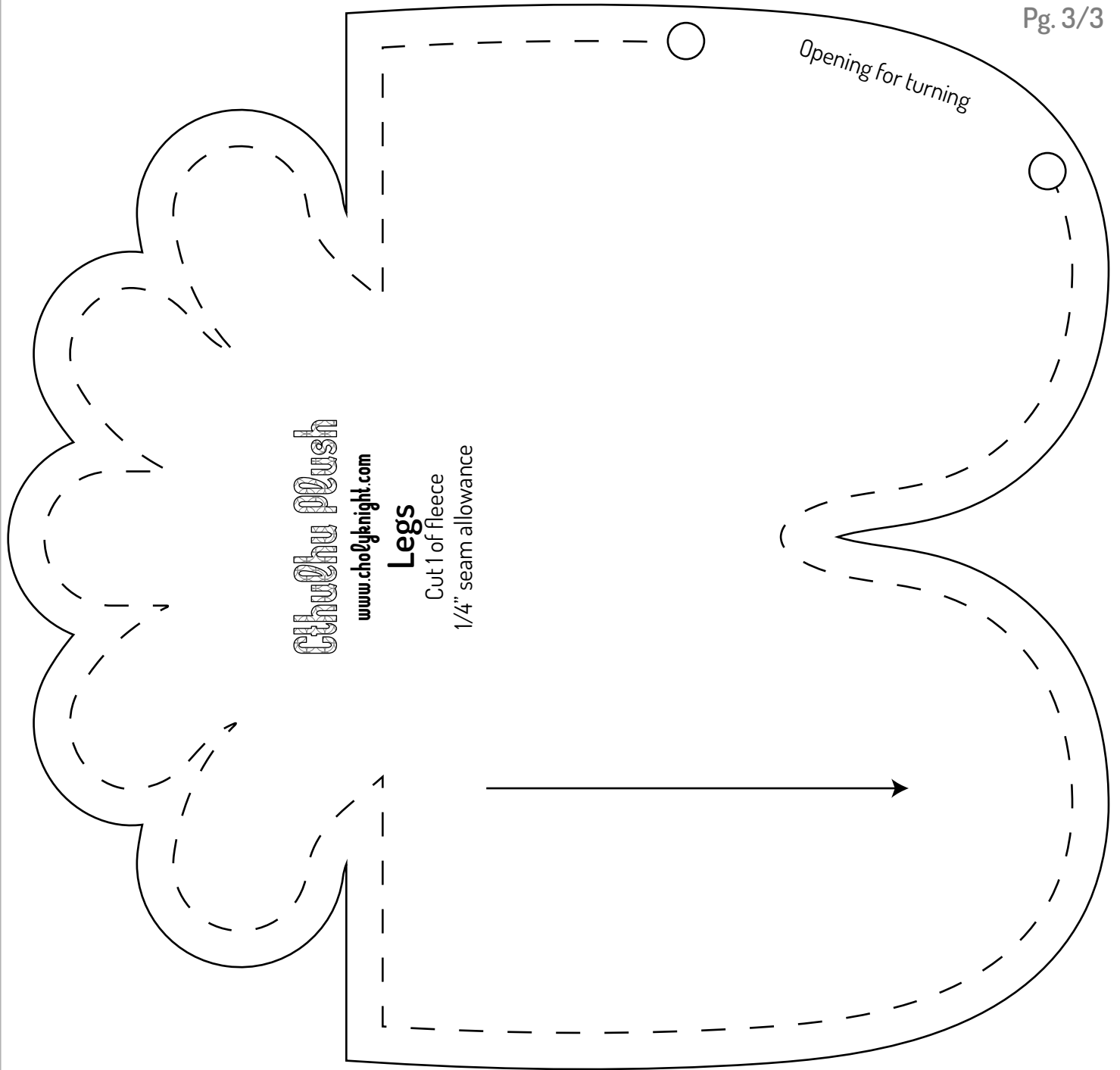
[www.cholyknight.com](http://www.cholyknight.com)

### Wings

Cut 2 of fleece  
1/4" seam allowance

Opening for turning





Cthulhu Plush

www.cholyknight.com

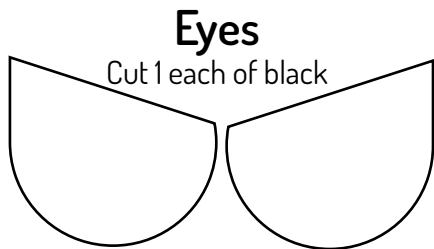
**Legs**

Cut 1 of fleece  
1/4" seam allowance



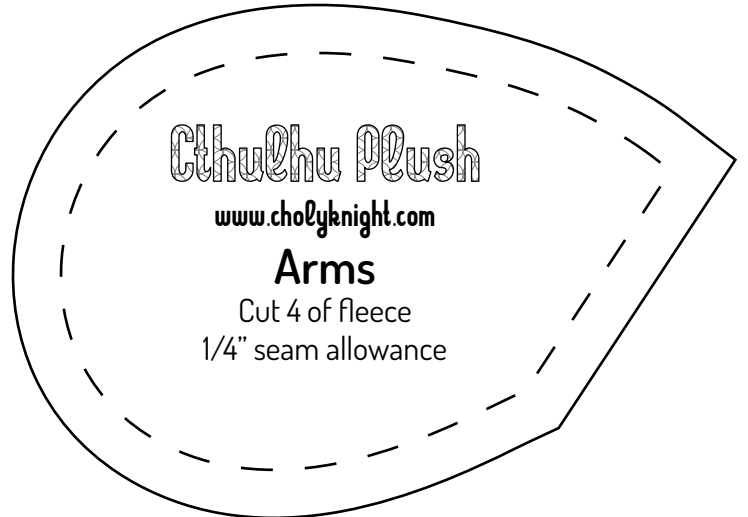
**Inner Eyes**

Cut 1 each of red



**Eyes**

Cut 1 each of black



Cthulhu Plush

www.cholyknight.com

**Arms**

Cut 4 of fleece  
1/4" seam allowance