



skeleton tie

A SEWING PATTERN BY



sew desu ne?

skeleton tie

This project on its own is just a basic tie, simplified to be an easy costume piece. The optional applique makes it look just like a ribcage and accompanying vertebrae -- perfect for Halloween!

DIFFICULTY: 

Really simple! The appliqué is definitely the most difficult part, but even that can be skipped.

MAKES:

one tie that finishes 58" long

MATERIALS & TOOLS

- 1 yd. of light to medium weight fabric (light shirting or linen fabric would be perfect - I used a polyester suiting)
 - NOTE: You could also get away with just 1/3-1/2 yd. if you're not using a directional print and you can cut the tie along the cross-wise grain
- 1/4 yd. of lining fabric (light cotton such as voile or lawn would be great - I used a polyester lining fabric)
- Appliqué supplies: (see alternatives in step 1)
 - 25" x 10" (or 1/3 yd.) of white appliqué fabric
 - 25" x 10" (or 1/3 yd.) of light or heavyweight fusible web
- Matching sewing thread
- Basic sewing tools (sewing machine, scissors, iron, needles, pins, fabric marker, seam ripper)

BEFORE YOU BEGIN:

1. Print out the project pattern, pages 6-15
2. Assemble the printed pattern pieces
3. Lay out the pattern pieces on your fabric and cut them out
4. Mark the fabric pieces with the guidelines from the pattern

skeleton tie

SEWING TUTORIAL



1

First of course is all the appliqué. I did mine by tracing the appliqué pattern onto lightweight fusible web, cutting out the shapes, then ironing the fabric onto the tie according to the pattern guidelines. I then sewed it on with a zigzag stitch around all the shapes. You could also use heavyweight fusible web and skip the sewing altogether.

Alternatives include using the pattern as a freezer paper stencil and painting the ribcage, but one idea that I thought would look especially cool would be to bleach the fabric while using the skeleton stencil following this tutorial: <http://melaniemjones.wordpress.com/tag/skeleton-stencil/>



2

Next we add on the facing sections for the points of the tie. For each lining bit, we need to finish the upper straight edge. I did a quick zigzag along the raw edge to finish it nicely, but after that you just need to do a simple single-fold hem. Fold it over by $\frac{3}{8}$ ", iron it in place, then sew it down. Repeat this with your smaller facing section as well.

3

sew desu ne?

| WWW.CHOLYKNIGHT.COM |

skeleton tie

SEWING TUTORIAL

Now you can sew the facing to your tie. Line up the facing against the point of your tie with right sides together and sew around the sides and bottom edge. Leave the top free for turning it right side out in a bit. Trim the seam allowances, turn the tie right side out, the press the seam flat. Repeat this with the other end of your tie and the remaining facing piece.



To join the tie ends together, simply line up the diagonal seam found at the end of the tie halves. If you line them up with right sides together they should match up nicely and you can make a seam like usual. Be sure to press the seam open when you finish.

If you wanted to make this tie shorter, this is where you could make a quick and dirty adjustment. Simply trim off a few inches from this center section, making sure you cut parallel to the original seam line.



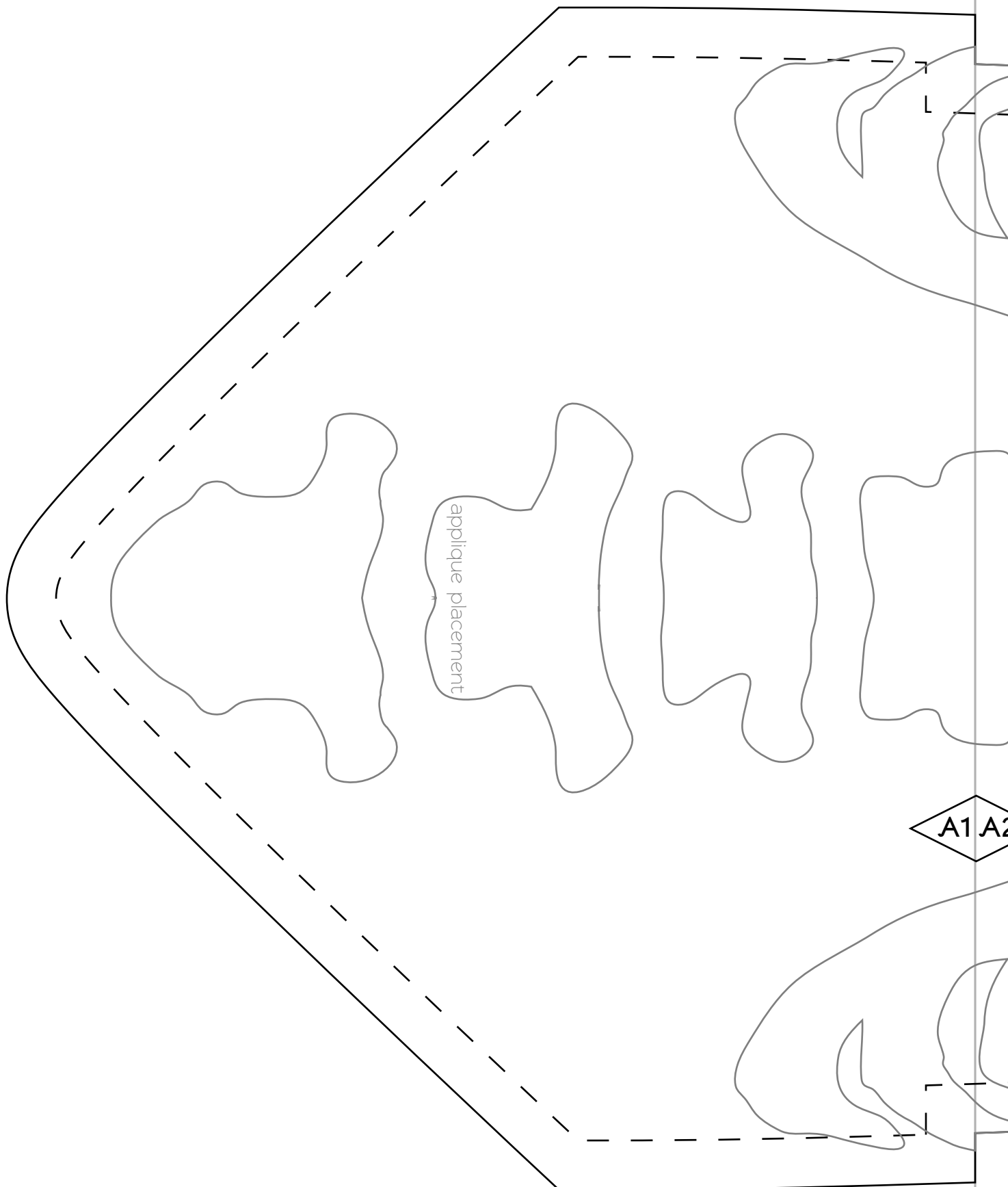
skeleton tie

SEWING TUTORIAL



5

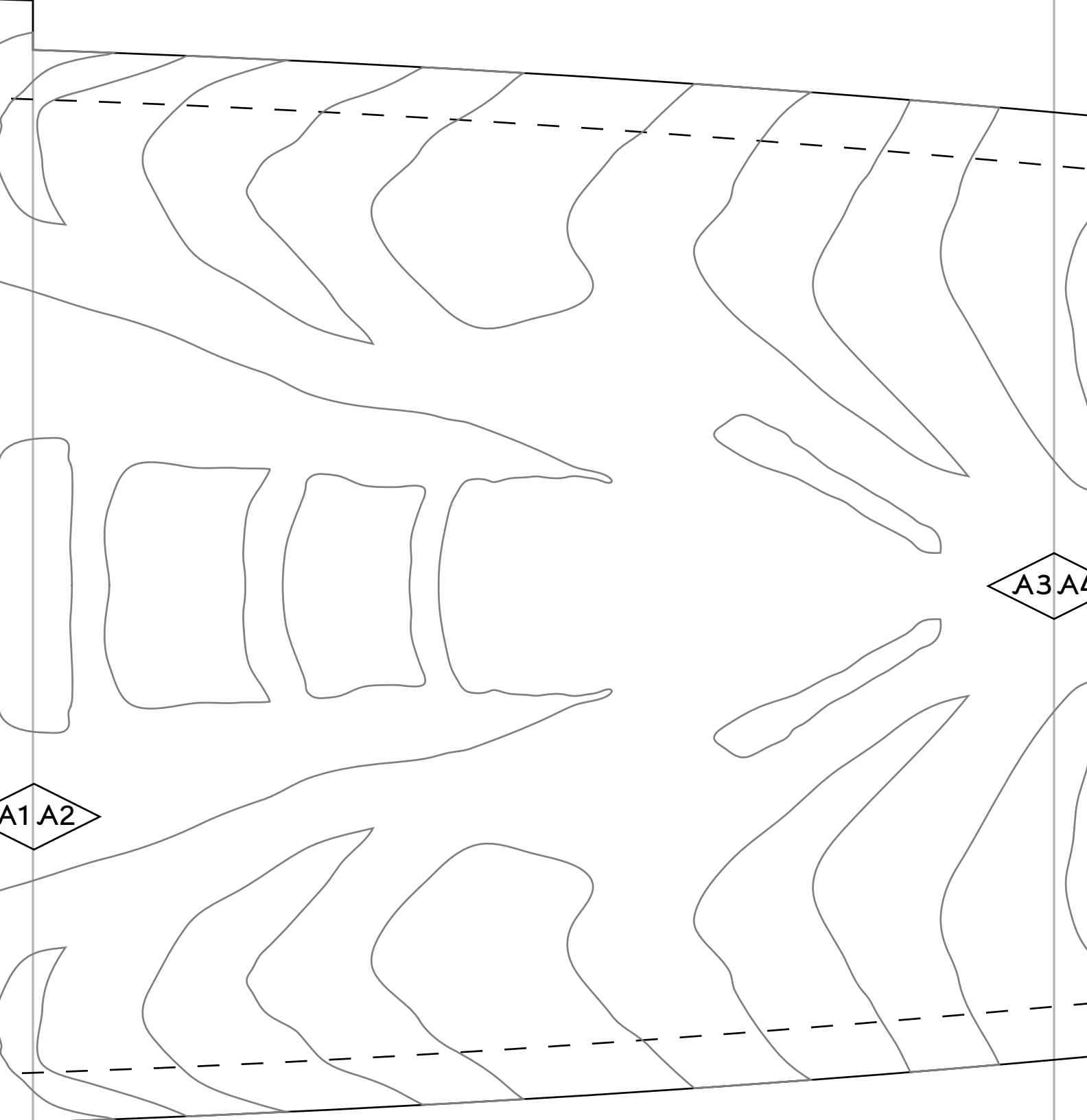
Just one more step to go! To finish off your tie, fold the entire thing in half lengthwise to make a skinny strip. Line up the raw edges going along the edge of the tie, then sew down the entire length. Press the seam open, then turn the tie right side out. Give it one more press with the seam centered in the back of the tie, and you should have a nicely finished product!



applique placement

A1 A2

B1 B2



A1 A2

A3 A4

B3 B4



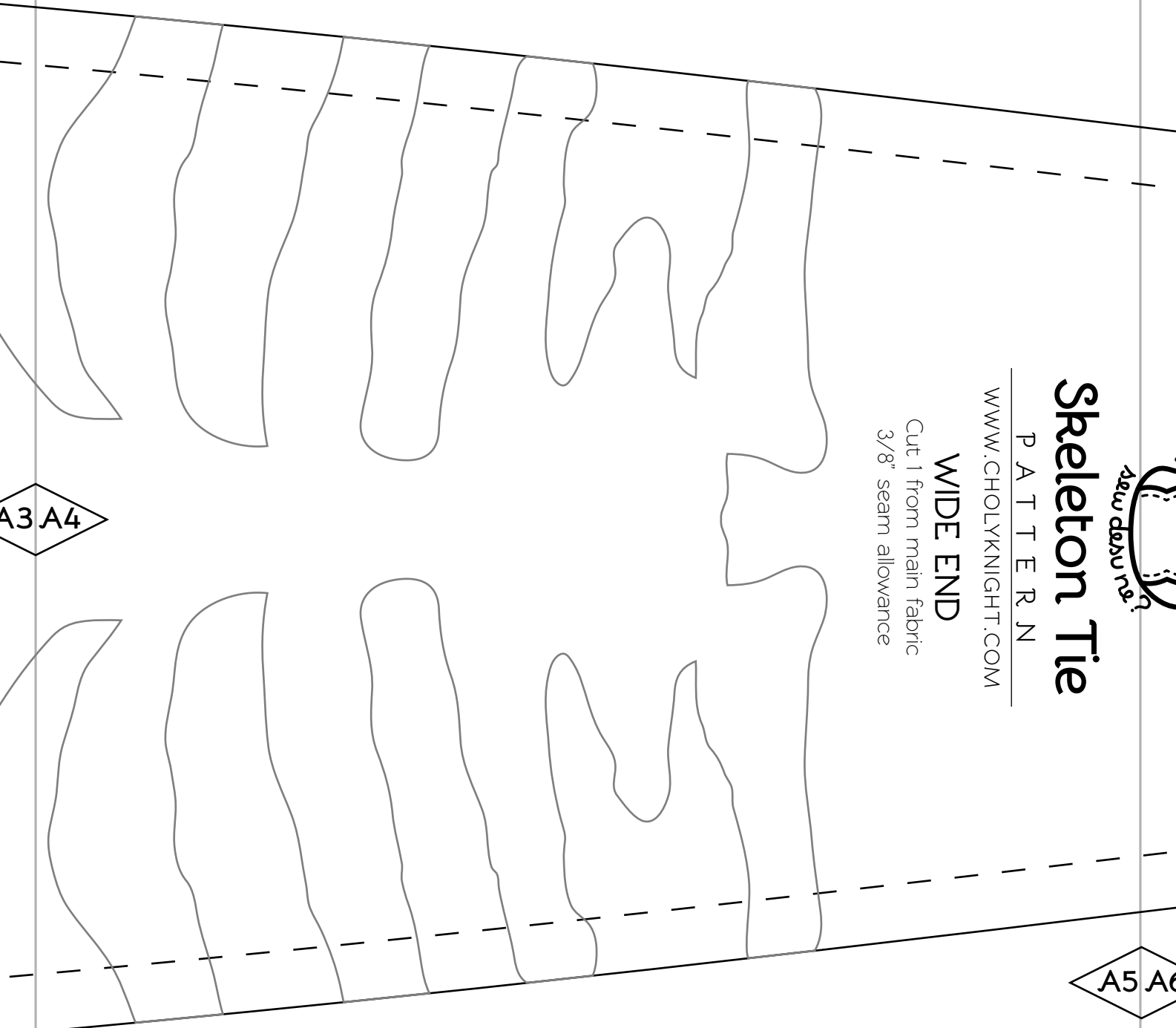
Skeleton Tie

P A T T E R N

WWW.CHOLYKNIGHT.COM

WIDE END

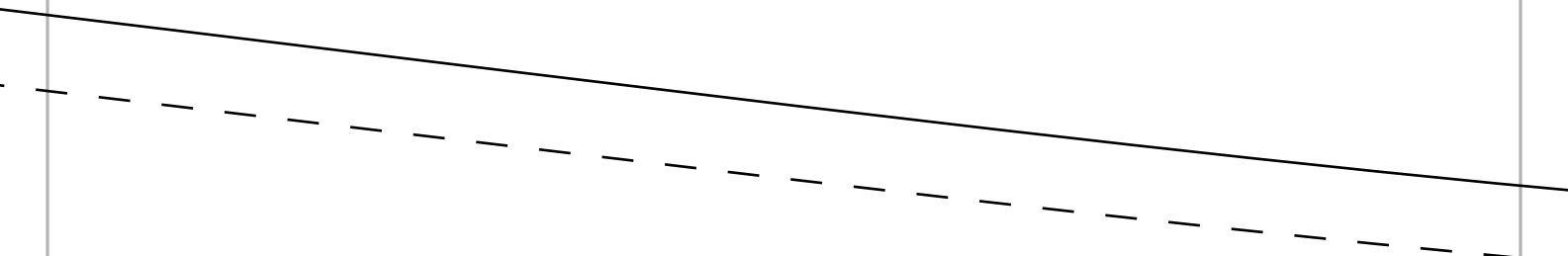
Cut 1 from main fabric
3/8" seam allowance



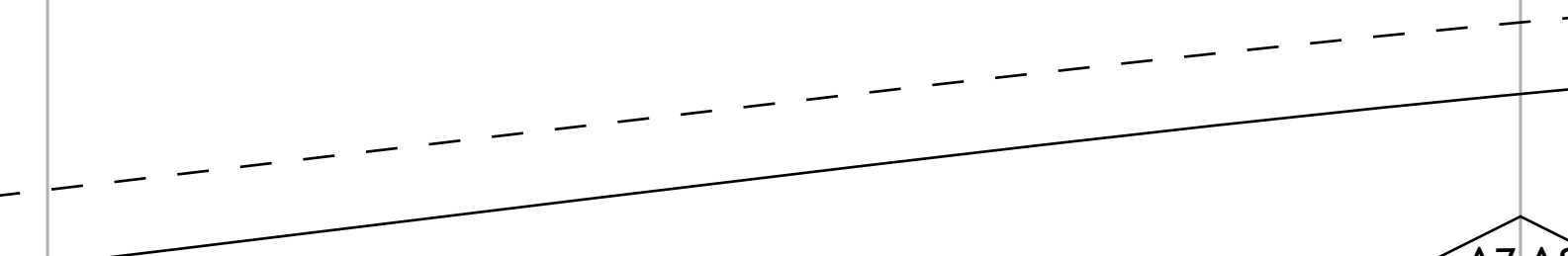
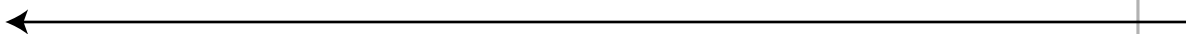
A3 A4

A5 A6

B5 B6

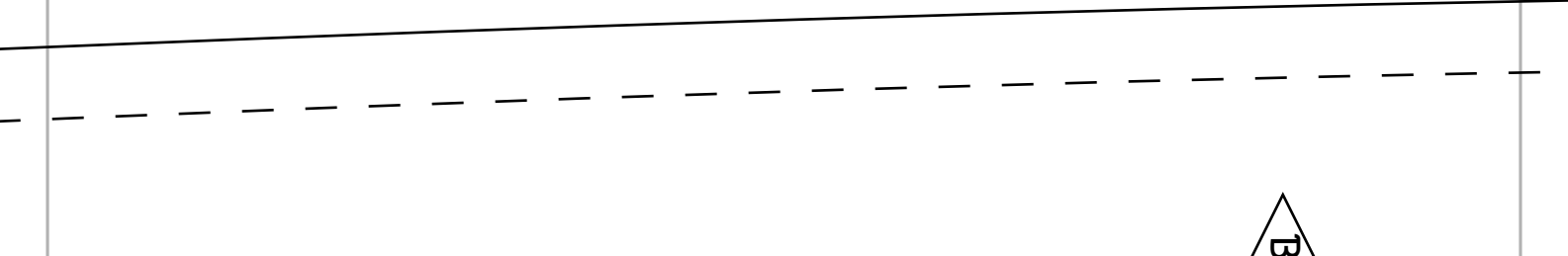


Asu dan su re

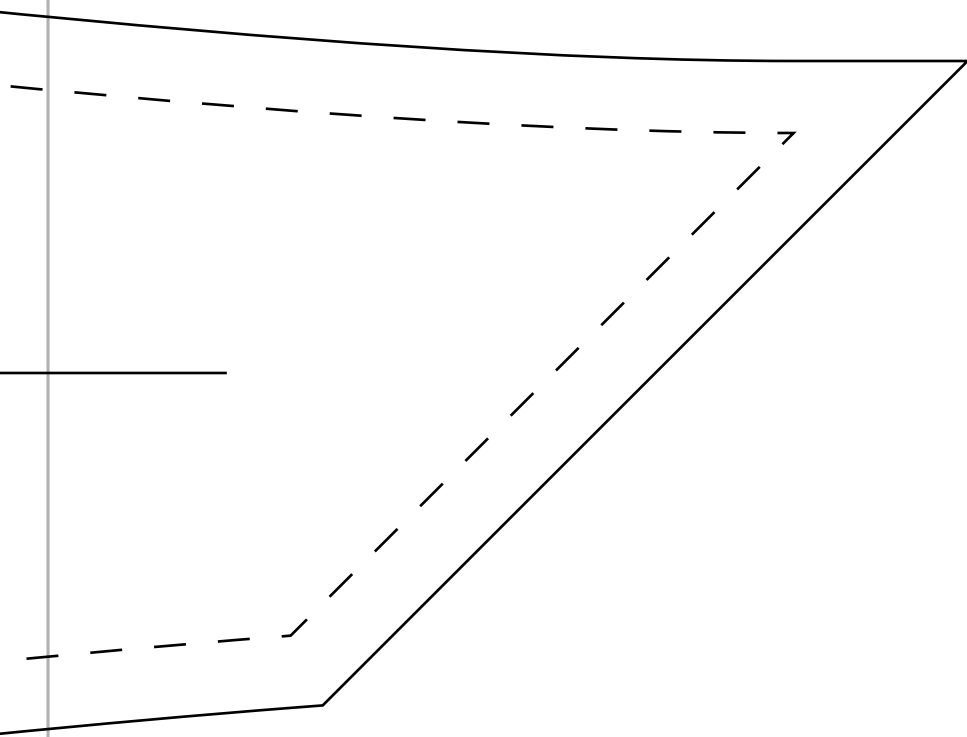


A5 A6

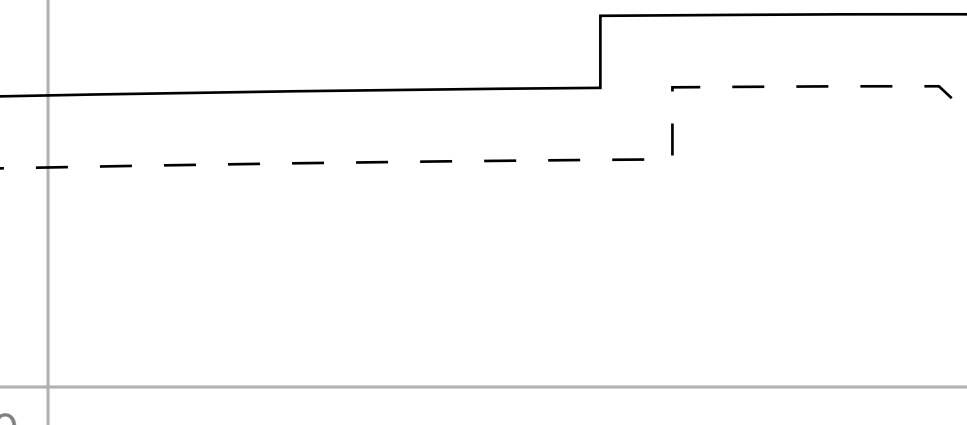
A7 A8



B7 B8



A7 A8



B9 B10

B1 B2



Skeleton Tie

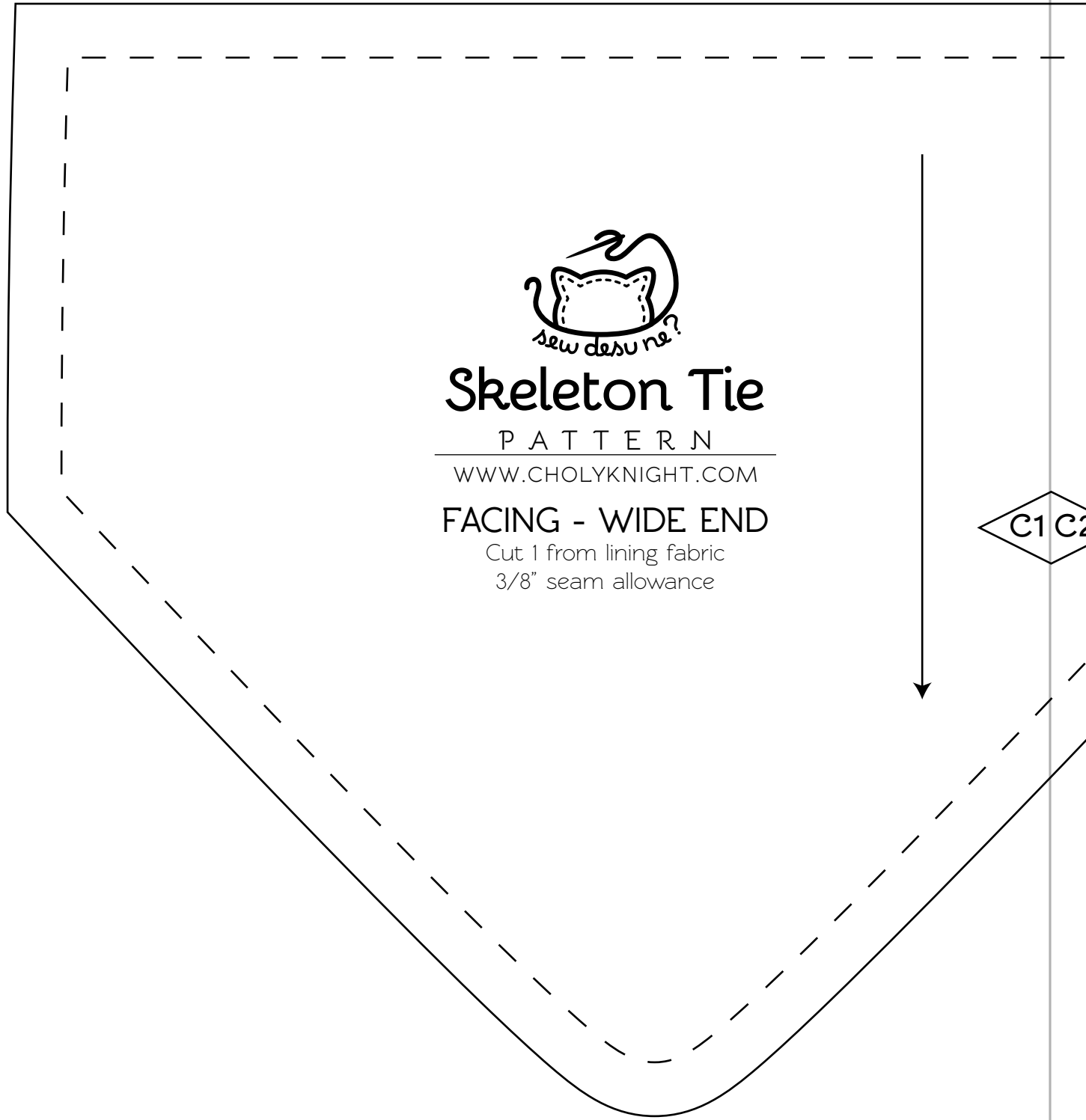
P A T T E R N

WWW.CHOLYKNIGHT.COM

FACING - WIDE END

Cut 1 from lining fabric
3/8" seam allowance

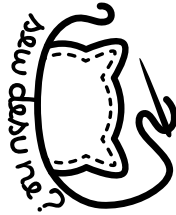
C1 C2



B3 B4

C3 C4

C1 C2



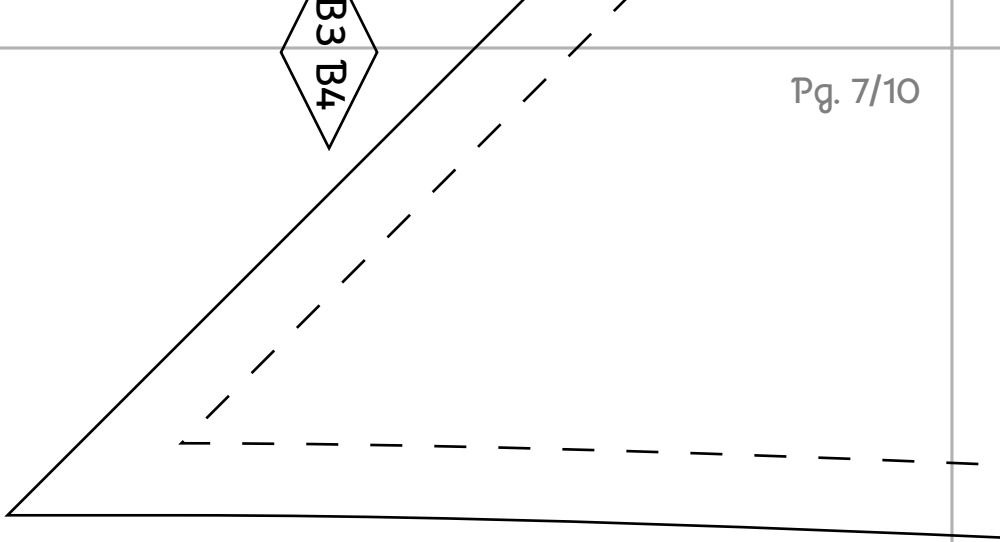
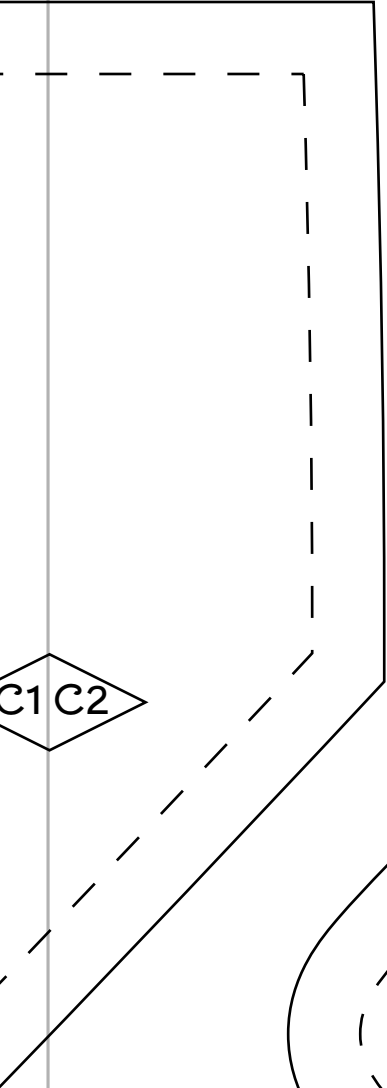
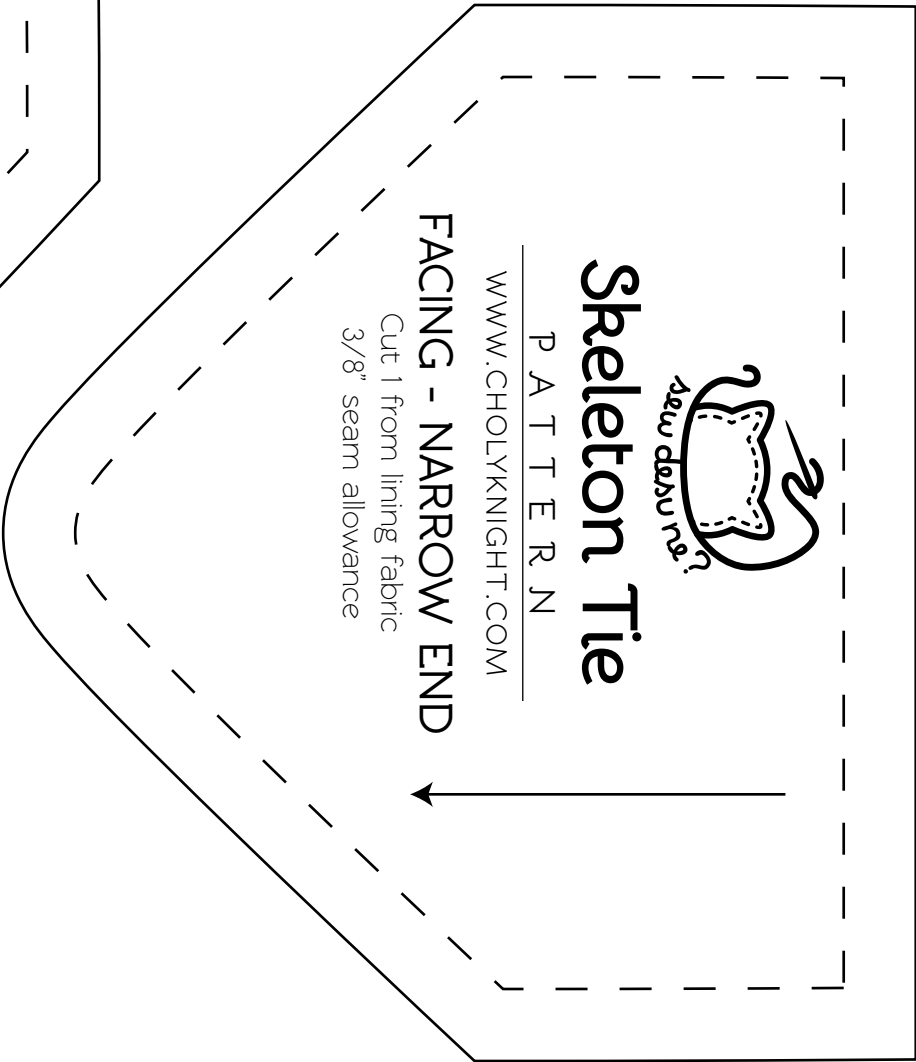
Skeleton Tie

P A T T E R N

WWW.CHOLYKNIGHT.COM

FACING - NARROW END

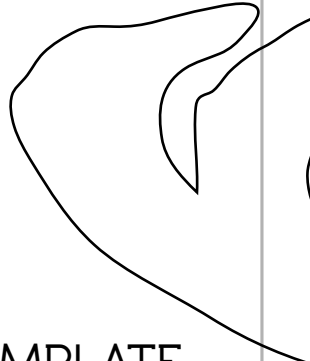
Cut 1 from lining fabric
3/8" seam allowance



B5 B6

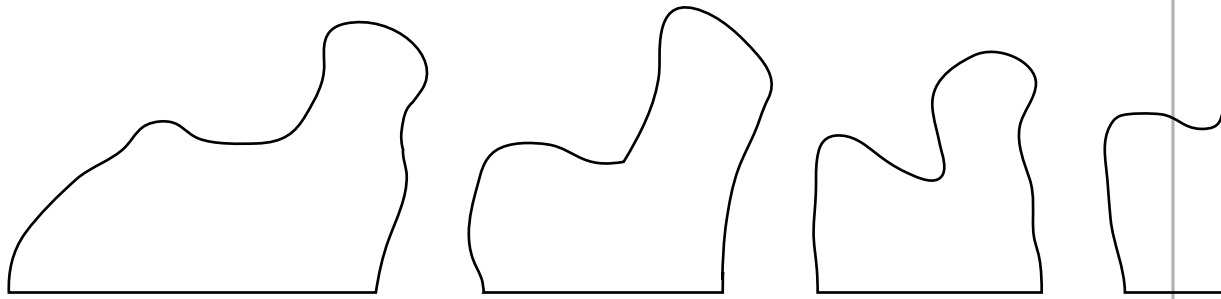
C3 C4

C5 C6

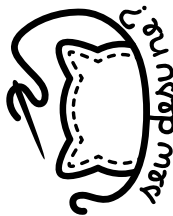
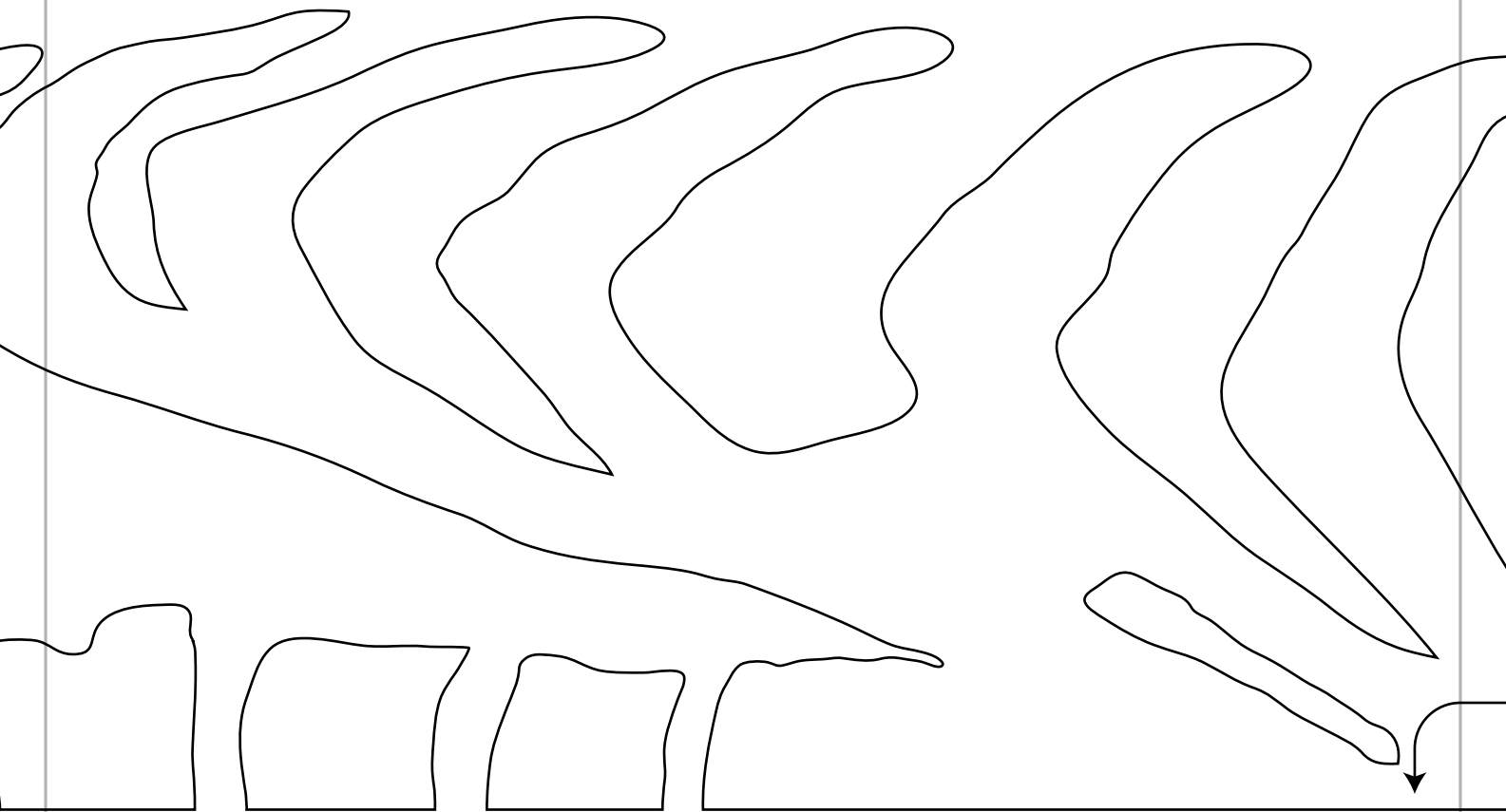


SKELETON TEMPLATE

Cut 1 on fold of applique fabric or
template material



C5 C6



Skeleton Tie

P A T T E R N

WWW.CHOLYKNIGHT.COM

NARROW END

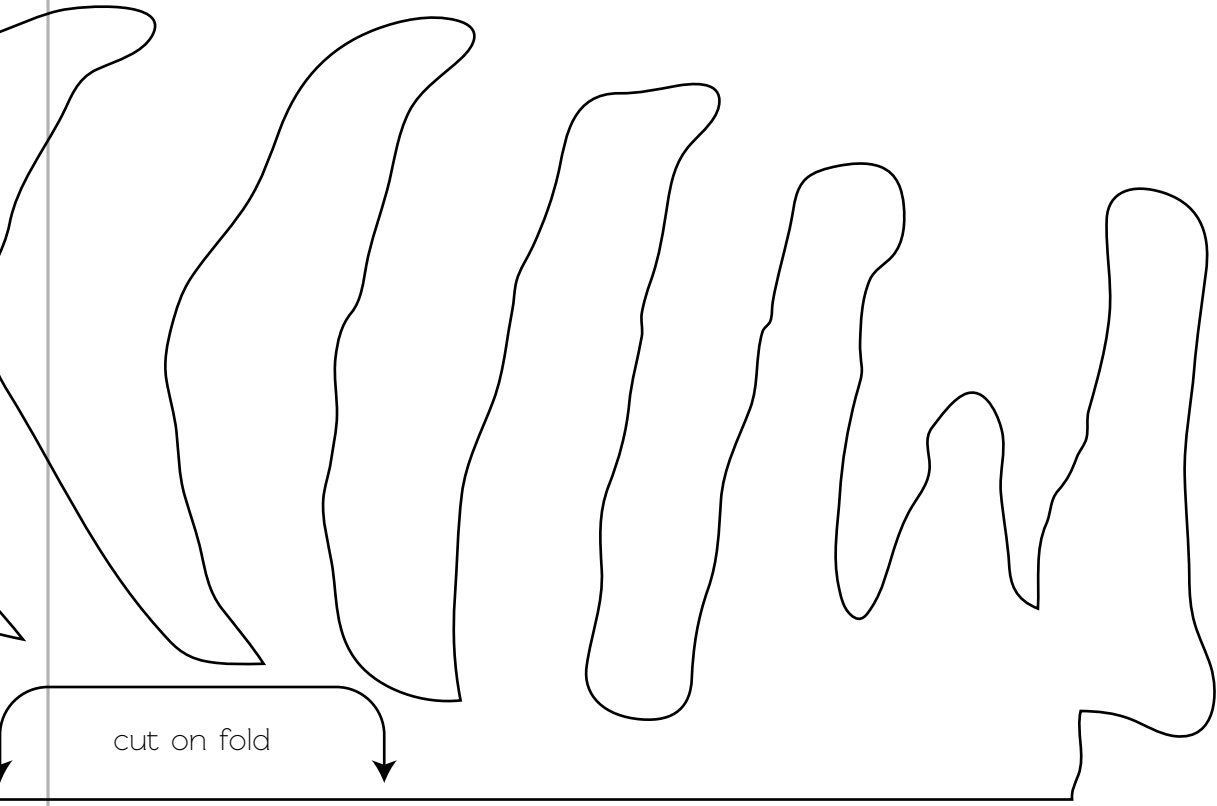
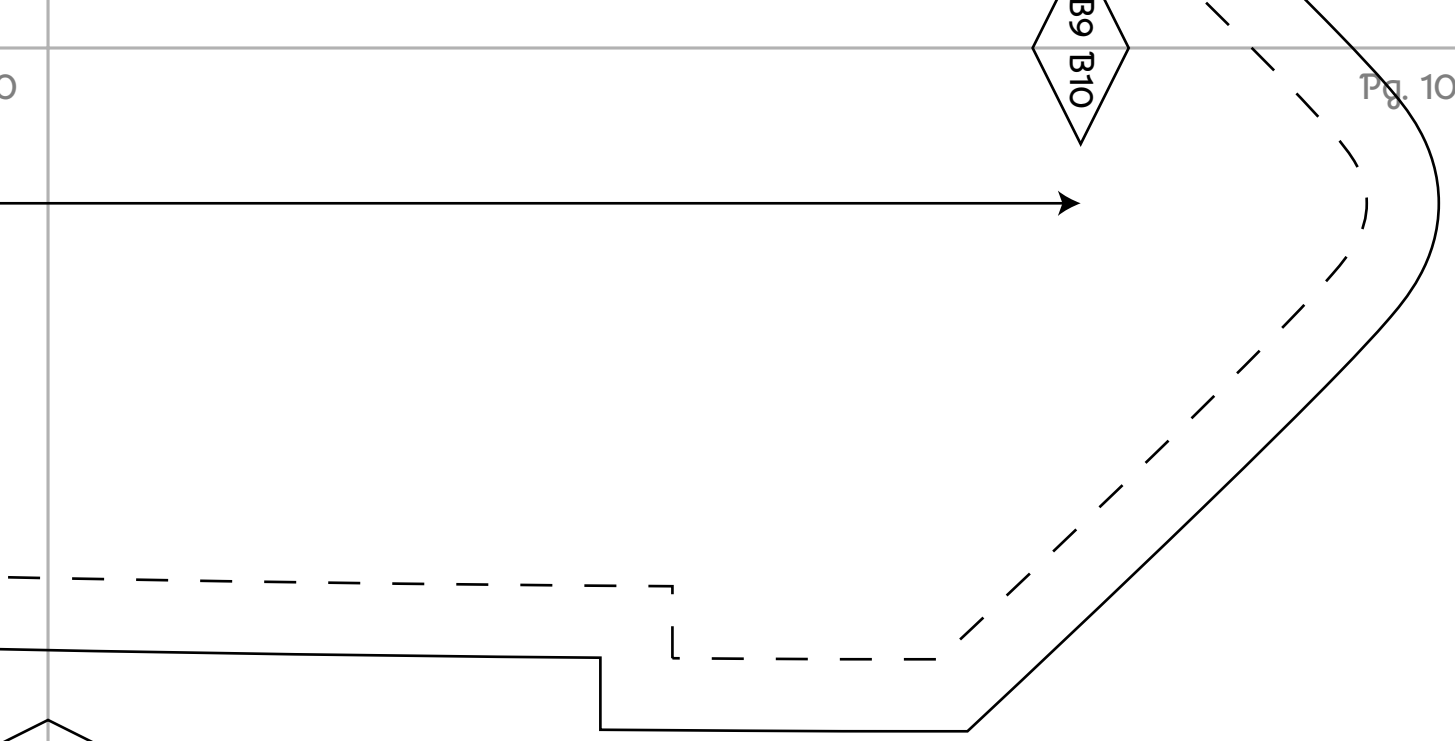
Cut 1 from main fabric
3/8" seam allowance

B7 B8

C7 C8

B9 B10

C7 C8



cut on fold